

# Great Western Operating Company, LLC

**Location** Colorado  
**Field** Wattenburg  
**Installation** Schaefer-Pre  
**Slot** C11 - Schaefer LD 13-031HN  
**Well** Schaefer LD 13-031HN  
**Wellbore** Schaefer LD 13-031HN (PWB)

Scale 1 cm = 400 ft

East (Feet) ->

Created by admin

Date plotted 13-Aug-2018

Plot reference is Schaefer LD 13-031HN (PWB).

Ref wellpath is Schaefer LD 13-031HN (PWP#1).

Coordinates are in Feet reference C11 - Schaefer LD 13-031HN.

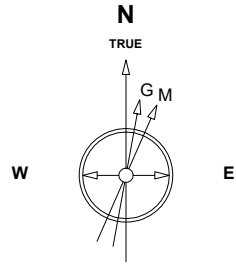
True Vertical Depths are reference Rig Datum.

Measured Depths are reference Rig Datum.

Rig Datum: Planned Datum #1

Rig Datum to Mean Sea Level: 5041.40 ft.

Plot North is aligned to TRUE North.



Aug-2-2018

EMM-2015 [2000.0-2020.0] Dip: 66.28 deg Field: 51960.7 nT

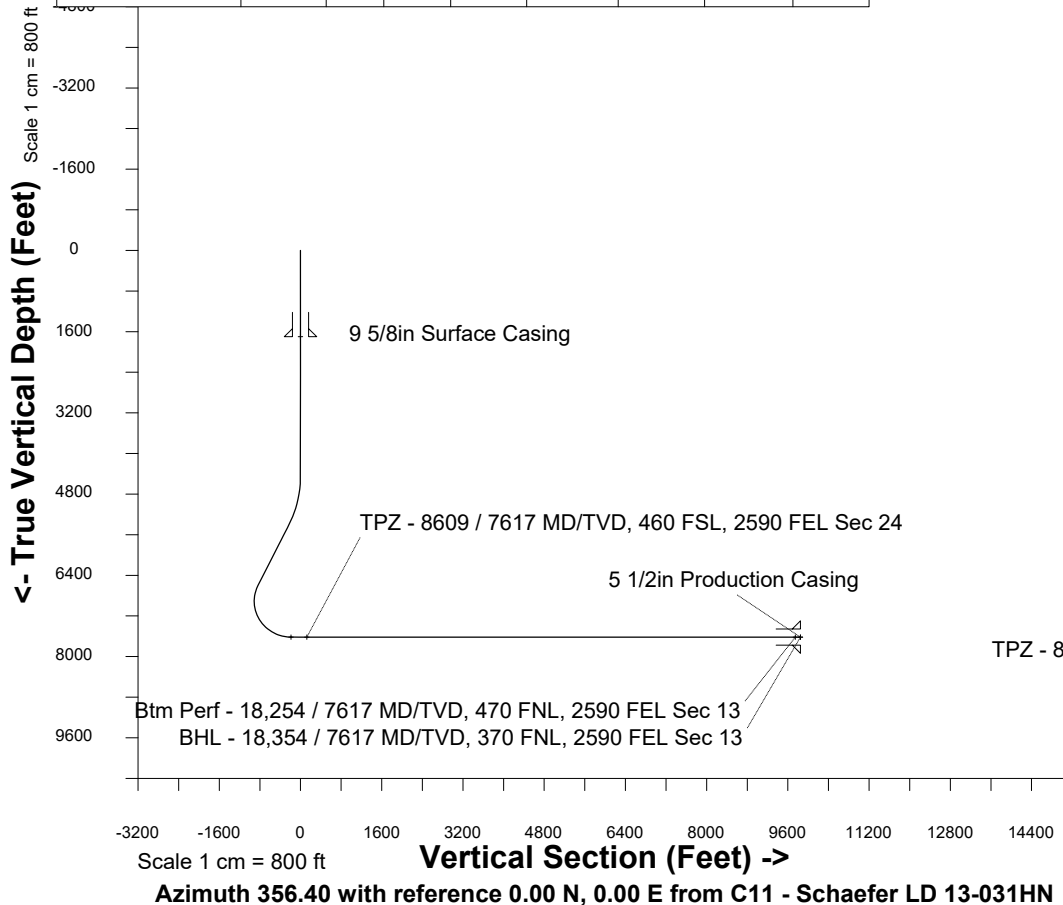
Lat: N39 56 40.1460 Long: W104 50 5.2404 Elev: 5021.40 ft

Magnetic North is 8.18 deg East of TRUE North

To correct azimuth from Magnetic to TRUE add 8.18 deg

## WELL PROFILE DATA

Point	MD	Inc	Azi	TVD	North	East	deg/100ft	V. Sect
Tie on	0.00	0.00	0.00	0.00	S 0.00	W 0.00		0.00
KOP	4442.00	0.00	204.72	4442.00	S 0.00	W 0.00	0.00	0.00
End of Build	5441.88	30.00	204.72	5396.83	S 232.37	W 106.99	3.00	-225.19
End of Hold	6835.82	30.00	204.72	6604.06	S 865.39	W 398.44	0.00	-838.67
Target	8608.94	90.00	0.13	7617.00	N 83.20	W 639.74	0.00	123.20
Target Btm Pe...Sec 13	18253.97	90.00	0.13	7617.00	N 9728.21	W 618.58	0.00	9747.85
End of Turn	18254.25	90.00	0.16	7617.00	N 9728.48	W 618.58	13.00	9748.13
T.D. & Target BHL... 13	18354.15	90.00	0.16	7617.00	N 9828.38	W 618.30	0.00	9847.81



BHL - 18,354 / 7617 MD/TVD, 370 FNL, 2590 FEL Sec 13

Btm Perf - 18,254 / 7617 MD/TVD, 470 FNL, 2590 FEL Sec 13

