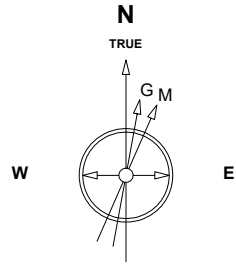


# Great Western Operating Company, LLC

**Location** Colorado  
**Field** Wattenburg  
**Installation** Schaefer-Pre

**Slot** C10 - Schaefer LD 13-030HNX  
**Well** Schaefer LD 13-030HNX  
**Wellbore** Schaefer LD 13-030HNX (PWB)

Created by admin  
Date plotted 13-Aug-2018  
Plot reference is Schaefer LD 13-030HNX (PWB).  
Ref wellpath is Schaefer LD 13-030HNX (PWP#1).  
Coordinates are in Feet reference C10 - Schaefer LD 13-030HNX.  
True Vertical Depths are reference Rig Datum.  
Measured Depths are reference Rig Datum.  
Rig Datum: Planned Datum #1  
Rig Datum to Mean Sea Level: 5041.40 ft.  
Plot North is aligned to TRUE North.



Scale 1 cm = 400 ft

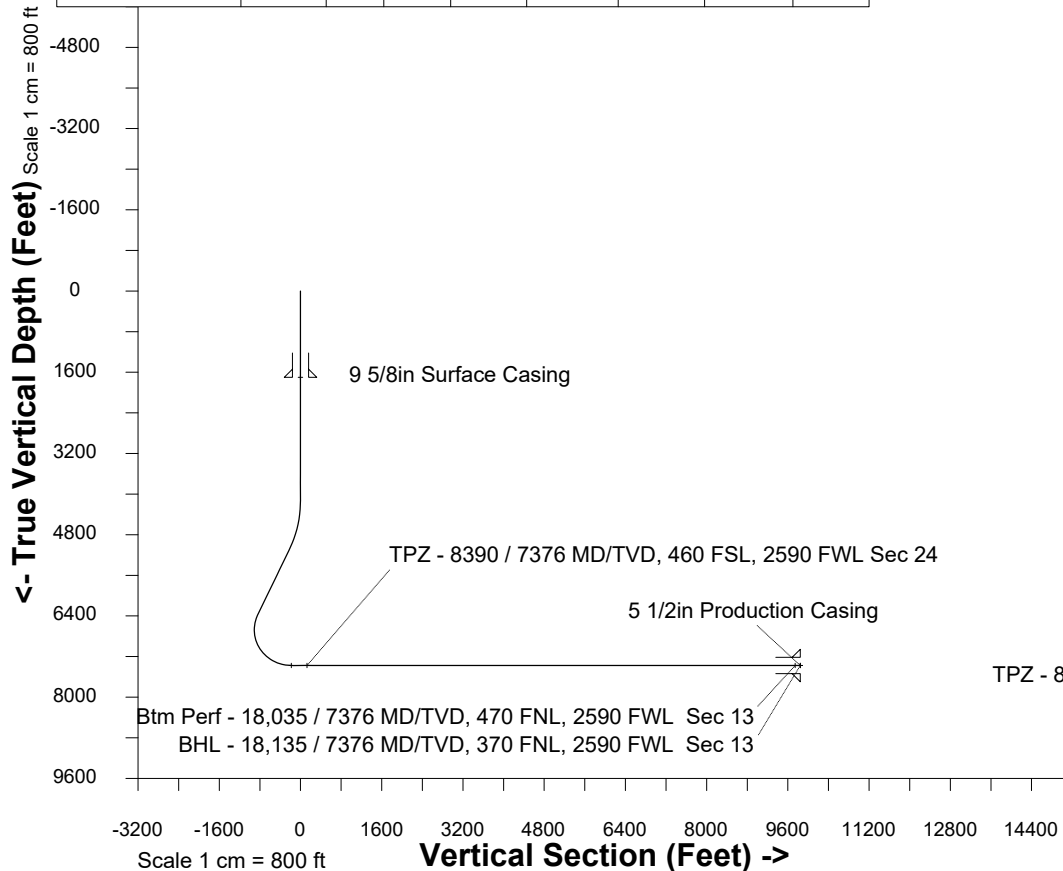
East (Feet) ->

-8800 -8000 -7200 -6400 -5600 -4800 -4000 -3200 -2400 -1600 -800 0 800 1600 2400

Aug-2-2018  
EMM-2015 [2000.0-2020.0] Dip: 66.28 deg Field: 51960.7 nT  
Lat: N39 56 40.1460 Long: W104 50 5.2404 Elev: 5021.40 ft  
Magnetic North is 8.18 deg East of TRUE North  
To correct azimuth from Magnetic to TRUE add 8.18 deg

## WELL PROFILE DATA

Point	MD	Inc	Azi	TVD	North	East	deg/100ft	V. Sect
Tie on	0.00	0.00	0.00	0.00	S 0.00	W 0.00		0.00
KOP	4125.00	0.00	208.57	4125.00	S 0.00	W 0.00	0.00	0.00
End of Build	5124.86	30.00	208.57	5079.81	S 224.66	W 122.33	3.00	-214.47
End of Hold	6629.28	30.00	208.57	6382.73	S 885.20	W 482.00	0.00	-845.07
Target	8389.76	90.00	359.96	7376.00	N 68.20	W 757.30	0.00	126.84
Target Btm Pe...Sec 13	18034.84	90.00	359.96	7376.00	N 9713.27	W 764.61	0.00	9743.32
End of Turn	18035.73	90.00	359.84	7376.00	N 9714.16	W 764.61	13.00	9744.21
T.D. & Target BHL... 13	18135.02	90.00	359.84	7376.00	N 9813.45	W 764.88	0.00	9843.22

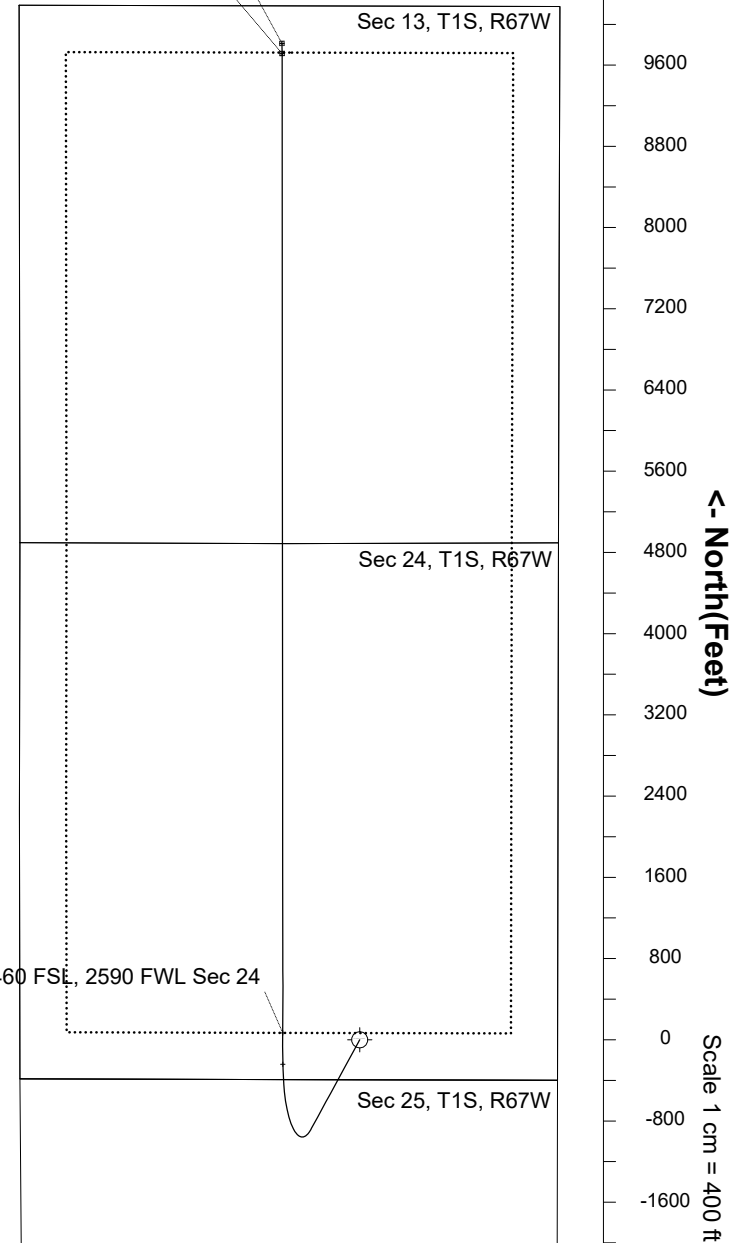


Scale 1 cm = 800 ft

Vertical Section (Feet) ->

Azimuth 355.54 with reference 0.00 N, 0.00 E from C10 - Schaefer LD 13-030HNX

BHL - 18,135 / 7376 MD/TVD, 370 FNL, 2590 FWL Sec 13  
Btm Perf - 18,035 / 7376 MD/TVD, 470 FNL, 2590 FWL Sec 13



<- North(Feet)

Scale 1 cm = 400 ft