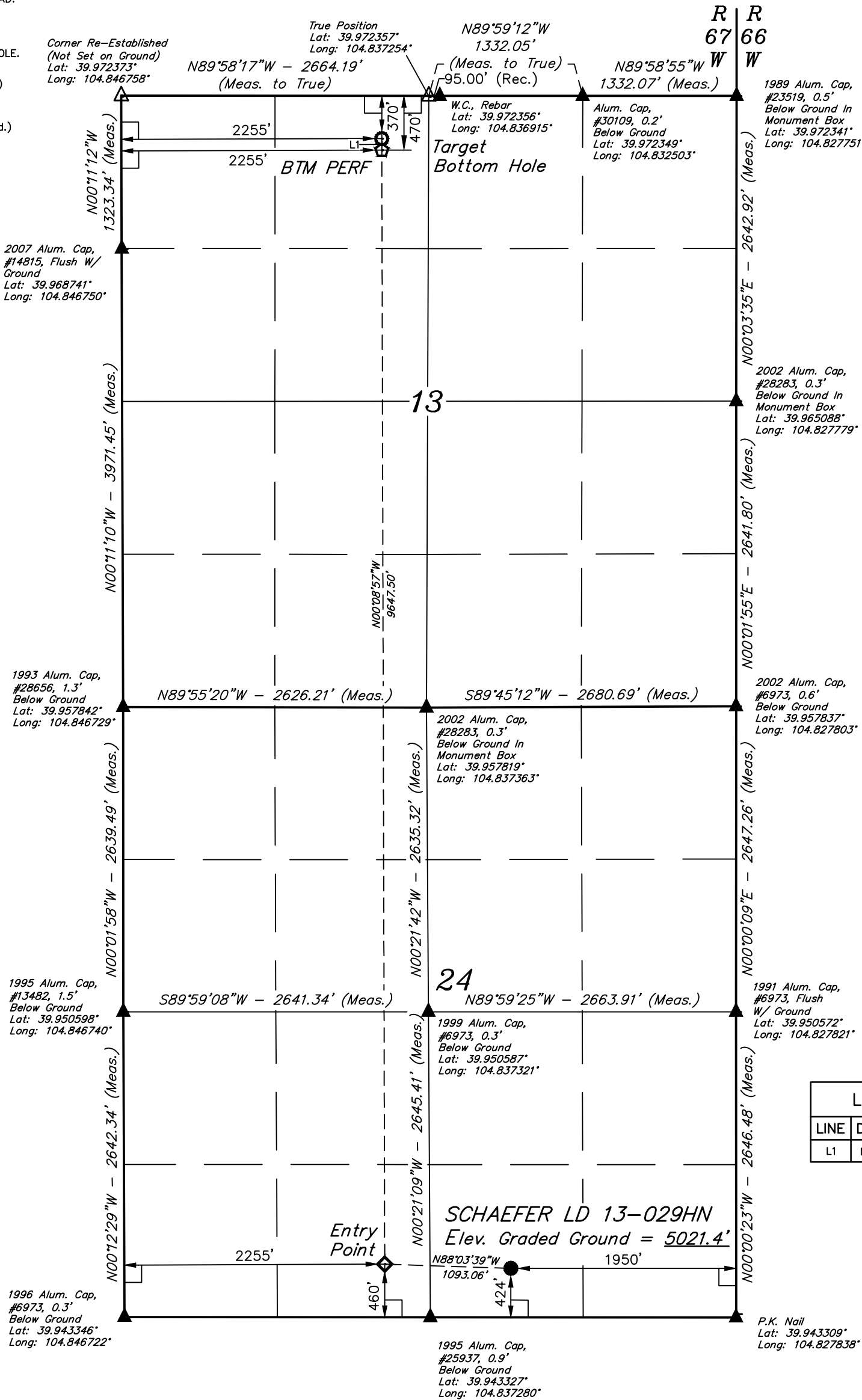


LEGEND:

- = 90° SYMBOL
- = PROPOSED WELLHEAD.
- = ENTRY POINT.
- = BTM PERF.
- = TARGET BOTTOM HOLE.
- = SECTION CORNERS LOCATED. (NAD 83)
- = SECTION CORNERS RE-ESTABLISHED. (Not Set on Ground.) (NAD 83)

T1S, R67W, 6th P.M.



LINE TABLE		
LINE	DIRECTION	LENGTH
L1	N00°11'12"W	100.00'



NAD 83 (SURFACE LOCATION)	NAD 83 (ENTRY POINT)
LATITUDE = 39°56'40.15" (39.944485°)	LATITUDE = 39°56'40.53" (39.944592°)
LONGITUDE = 104°50'05.24" (104.834789°)	LONGITUDE = 104°50'19.26" (104.838684°)
NAD 27 (SURFACE LOCATION)	NAD 27 (ENTRY POINT)
LATITUDE = 39°56'40.20" (39.944500°)	LATITUDE = 39°56'40.59" (39.944607°)
LONGITUDE = 104°50'03.34" (104.834260°)	LONGITUDE = 104°50'17.36" (104.838155°)
NAD 83 (BTM PERF)	NAD 83 (TARGET BOTTOM HOLE)
LATITUDE = 39°58'15.85" (39.971069°)	LATITUDE = 39°58'16.84" (39.971344°)
LONGITUDE = 104°50'19.36" (104.838711°)	LONGITUDE = 104°50'19.36" (104.838712°)
NAD 27 (BTM PERF)	NAD 27 (TARGET BOTTOM HOLE)
LATITUDE = 39°58'15.91" (39.971085°)	LATITUDE = 39°58'16.89" (39.971360°)
LONGITUDE = 104°50'17.46" (104.838182°)	LONGITUDE = 104°50'17.46" (104.838183°)

CERTIFICATE OF SURVEY

THIS IS TO CERTIFY THAT THE ABOVE PLAT WAS PREPARED FROM FIELD NOTES OF ACTUAL SURVEYS MADE BY ME OR UNDER MY SUPERVISION, AND THAT THE SAME ARE TRUE AND CORRECT TO THE BEST OF MY KNOWLEDGE AND BELIEF.

REGISTERED LAND SURVEYOR
REGISTRATION NO. 28285
STATE OF COLORADO
07-31-18

REV: 1 07-31-18 A.P. (ENTRY POINT MOVE)

BASIS OF BEARINGS
TRANSVERSE MERCATOR PROJECTION WITH
A CENTRAL MERIDIAN OF W105°00'00".

BASIS OF ELEVATION
OPUS SOLUTION GENERATED NAVD 88



UELS, LLC
Corporate Office * 85 South 200 East
Vernal, UT 84078 * (435) 789-1017



GREAT WESTERN OPERATING COMPANY

SCHAEFER LD 13-029HN
SW 1/4 SE 1/4, SECTION 24, T1S, R67W, 6th P.M.
ADAMS COUNTY, COLORADO

SURVEYED BY	RYAN WILLIAMS, M.M.	06-27-18	SCALE
DRAWN BY	M.D.	07-10-18	1" = 1000'

WELL LOCATION PLAT