

HALLIBURTON

iCem[®] Service

TRUE OIL LLC

Ouray 5-64 15-16-1BHZ Production

Sincerely,
Meghan Jacobs

Legal Notice

Disclaimer:

All information in this report is provided subject to the terms and conditions which govern the services provided by Halliburton. Halliburton personnel use their best efforts in gathering information and their best judgment in interpreting it, but any interpretation, research, analysis or recommendation furnished by Halliburton are opinions based upon inferences from measurements and empirical relationships and assumptions, which inferences and empirical relationships and assumptions are not infallible, and with respect to which professionals in the industry may differ. iCem 3D Displacement results are used to understand how fluids intermix during a cement job. Simulation and 3D displacement results are not intended as and should not be used as a replacement for bond logs in determining top of cement. Current 3D model calculations are known to model more volume than the input volume for standard cases due to known calculation improvements required. For rotational cases, the modeled volume will be impacted by the same calculations impacting the standard cases, as well as additional constraints imposed to make the calculation time required operationally feasible. Therefore, until further notice, 3D displacement results should not be used for replacement of a bond log, or used as an identifier of top of cement. HALLIBURTON IS UNABLE TO GUARANTEE THE ACCURACY OF ANY CHART INTERPRETATION, RESEARCH ANALYSIS, OR JOB RECOMMENDATION and any interpretation or recommendation is not for use of or reliance upon by any third party. The customer has full responsibility for any of its decisions which are based on the information provided in this report.

Table of Contents

1.0 Cementing Job Summary 4

 1.1 Executive Summary4

2.0 Real-Time Job Summary 7

 2.1 Job Event Log7

3.0 Attachments..... 9

 3.1 Ouray 5-64 15-16-1BHZ Production – Job Chart with Events9

 3.2 Ouray 5-64 15-16-1BHZ Production – Job Chart without Events10

1.0 Cementing Job Summary

1.1 Executive Summary

Halliburton appreciates the opportunity to perform the cementing services on the **Ouray 5-64 15-16-1BHZ** cement **Production** casing job. A pre-job safety meeting was held before the job where details of the job were discussed, potential safety hazards were reviewed, and environmental compliance procedures were outlined.

Approximately 54bbls of cement returned to surface.

Halliburton maintains a continuous quality improvement process and appreciates any comments or suggestions that you may have. Halliburton again thanks you for the opportunity to perform service work on this well. We hope to be your solutions provider for future projects.

Respectfully,

Halliburton [Ft. Lupton]

HALLIBURTON

Cementing Job Summary

The Road to Excellence Starts with Safety

Sold To #: 306116	Ship To #: 3863266	Quote #: 0022455198	Sales Order #: 0904927595							
Customer: TRUE OIL LLC		Customer Rep: JOSH KLISEN								
Well Name: OURAY	Well #: 5-64 15-16-1BHZ	API/UWI #: 05-005-07342-00								
Field: WILDCAT	City (SAP): AURORA	County/Parish: ARAPAHOE	State: COLORADO							
Legal Description: NE SE-15-5S-64W-2280FSL-440FEL										
Contractor: TRUE DRLG		Rig/Platform Name/Num: TRUE 33								
Job BOM: 7523 7523										
Well Type: HORIZONTAL OIL										
Sales Person: HALAMERICA\HB41307		Srvc Supervisor: Vitali Neverdasov								
Job										
Formation Name										
Formation Depth (MD)	Top	Bottom								
Form Type		BHST								
Job depth MD	17788ft	Job Depth TVD	7761							
Water Depth		Wk Ht Above Floor								
Perforation Depth (MD)	From	To								
Well Data										
Description	New / Used	Size in	ID in	Weight lbn/ft	Thread	Grade	Top MD ft	Bottom MD ft	Top TVD ft	Bottom TVD ft
Casing		9.625	8.921	36	LTC	J-55	0	2146	0	2146
Casing	0	5.5	4.778	20	GB CD	P-110	0	17788	0	7761
Open Hole Section			8.5				2146	17798	2146	7761
Tools and Accessories										
Type	Size in	Qty	Make	Depth ft	Type	Size in	Qty	Make		
Guide Shoe	5.5				Top Plug	5.5	1	N/A		
Float Shoe	5.5	1	N/A	17788	Bottom Plug	5.5	0			
Float Collar	5.5	1	N/A	17761	SSR plug set	5.5				
Insert Float	5.5				Plug Container	5.5	1	HES		
Stage Tool	5.5				Centralizers	5.5	195	N/A		
Fluid Data										
Stage/Plug #: 1										
Fluid #	Stage Type	Fluid Name	Qty	Qty UoM	Mixing Density lbn/gal	Yield ft ³ /sack	Mix Fluid Gal	Rate bbl/min	Total Mix Fluid Gal	
1	Tuned Spacer III	Tuned Spacer III	60	bbl	12	3.16		4		
Stage/Plug #: 2										
Fluid #	Stage Type	Fluid Name	Qty	Qty UoM	Mixing Density lbn/gal	Yield ft ³ /sack	Mix Fluid Gal	Rate bbl/min	Total Mix Fluid Gal	
2	ElastiCem (Cap)	ELASTICEM (TM) SYSTEM	365	sack	13.2	1.57		7	7.53	

last updated on 6/22/2018 10:58:32 AM

Page 1 of 3

Cementing Job Summary

last updated on 6/22/2018 10:58:32 AM

2.0 Real-Time Job Summary

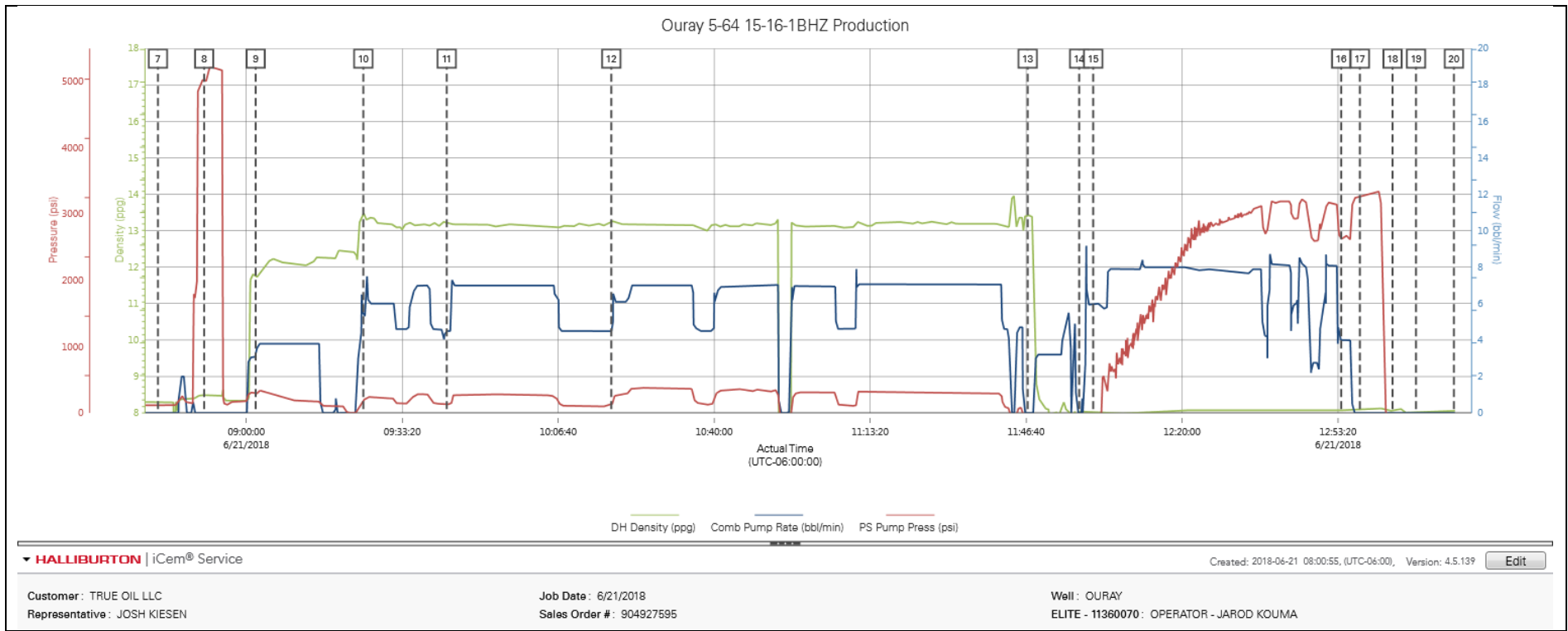
2.1 Job Event Log

Type	Seq. No.	Activity	Graph Label	Date	Time	Source	DH Density (ppg)	Comb Pump Rate (bbl/min)	PS Pump Press (psi)	Comments
Event	1	Call Out	Call Out	6/20/2018	21:30:00	USER				ON LOCATION CIRCULATING EQUIPMENT @ 01:00. CEMENT CREW @ 07:00
Event	2	Arrive at Location from Service Center	Arrive at Location from Service Center	6/20/2018	23:45:00	USER				47 MILES. Discussed numbers and job procedures with Customer. RIG IS RUNNING CASING. BROUGHT CEMENT HEAD AND MANIFOLD FOR RIG TO CIRCULATE THRU.
Event	3	Casing on Bottom	Casing on Bottom	6/21/2018	02:45:00	USER				CASING LANDED. RIG IS CIRCULATING THRU CRT.
Event	4	Safety Meeting - Pre Rig-Up	Safety Meeting - Pre Rig-Up	6/21/2018	06:43:00	USER				JSA to discuss the hazards of rig-up
Event	5	Rig-Up Equipment	Rig-Up Equipment	6/21/2018	06:50:00	USER				Rig-up all surface lines and equipment.
Event	6	Pre-Job Safety Meeting	Pre-Job Safety Meeting	6/21/2018	08:15:00	USER	8.31	0.00	120.00	With all essential personnel, to discuss the hazards of pumping the job, and pump schedule.
Event	7	Start Job	Start Job	6/21/2018	08:41:07	COM4	8.31	0.00	115.00	
Event	8	Test Lines	Test Lines	6/21/2018	08:51:00	USER	8.49	0.00	5011.00	Load line with 2 bbls of water. Test lines @ 5003 psi
Event	9	Pump Spacer	Pump Spacer	6/21/2018	09:02:00	USER	11.68	3.10	308.00	BATCH/ WEIGH/PUMP 60 BBLS OF TUNED SPACER WITH SURFACTANS @ 12 PPG
Event	10	Pump Cap Cement	Pump Cap Cement	6/21/2018	09:25:00	USER	13.47	5.30	208.00	BATCH/ WEIGHT PUMP 365 SKS (102.1 BBLS) OF ELASTICEM NO CBL @ 13.2 PPG
Event	11	Pump Lead Cement	Pump Lead Cement	6/21/2018	09:42:51	USER	13.24	4.50	145.00	BATCH/ WEIGHT/ PUMP 750 SKS (209.7 BBLS) OF ELASTICEM WITH CBL @ 13.2 PPG.
Event	12	Pump Tail Cement	Pump Tail Cement	6/21/2018	10:18:00	USER	13.25	4.50	127.00	WEIGH/ PUMP 1510 SKS (548.6 BBLS) OF NEOCEM @ 13.2 PPG
Event	13	Shutdown	Shutdown	6/21/2018	11:47:00	USER	13.42	0.00	-128.00	WASH/ PUMPS AND LINES
Event	14	Drop Top Plug	Drop Top Plug	6/21/2018	11:58:00	USER	8.04	0.00	-134.00	loaded top plug in plug container.
Event	15	Pump Displacement	Pump Displacement -	6/21/2018	12:01:00	USER	8.01	6.00	-30.00	394 bbls fresh water. FIRST 20 BBLS WITH 10 GAL

Start										MMCR. REST OF DISPLACEMENT WITH CLA WEB AND BE 3.
Event	16	Slow Rate	Slow Rate	6/21/2018	12:54:00	USER	8.08	4.00	2607.00	SLOW RATE TO 4 BPM
Event	17	Bump Plug	Bump Plug	6/21/2018	12:58:00	USER	8.10	0.00	3268.00	BUMP PLUG @ 3350 PSI. 500 psi over final circulating pressure.
Event	18	Check Floats	Check Floats	6/21/2018	13:05:00	USER	8.06	0.00	-81.00	Floats held. 4 bbls back
Event	19	Pre-Rig Down Safety Meeting	Pre-Rig Down Safety Meeting	6/21/2018	13:10:00	USER	8.04	0.00	-86.00	JSA to discuss the hazards of rig-down
Event	20	End Job	End Job	6/21/2018	13:18:06	COM4	8.06	0.00	-96.00	

3.0 Attachments

3.1 Ouray 5-64 15-16-1BHZ Production – Job Chart with Events



3.2 Ouray 5-64 15-16-1BHZ Production – Job Chart without Events

