



July 11, 2018

Ms. Julie Murphy, Director
Colorado Oil and Gas Conservation Commission
1120 Lincoln Street, Suite 801
Denver, CO 80203

RE: COGCC Rule 318A.e.: Proposed Wellbore Spacing Unit

Chalk 9N-35C-M
6N-66W, Sec: 26 E2SE; Sec: 35 E2E2
240.99 Acres

Dear Director Murphy,

SRC Energy Inc. ("SRC Energy") is planning to drill the above referenced well in accordance with the provisions set out in COGCC Rule 318A.e. SRC Energy's proposed wellbore spacing unit consists of:

Chalk 9N-35C-M
6N-66W, Sec: 26 E2SE; Sec: 35 E2E2
240.99 Acres

SRC Energy is not the only owner within the proposed wellbore spacing unit and hereby certifies to the Director that a thirty day (30-day) notice has been given by certified mail to all owners in the proposed wellbore spacing unit, as required by COGCC Rule 318A.e. (5). Copies of the required notification letters are on file at SRC Energy's office. The required thirty (30) day notice period has elapsed absent the receipt by SRC Energy of any objection to their proposal by the owner(s) within the proposed spacing unit for the subject well. We have not received any objections to such well location or proposed spacing unit, therefore, SRC Energy hereby requests the Director approve the well.

Enclosed is the Proposed Spacing Unit Plat to assist in your review and approval of SRC Energy's proposed Application for Permit to Drill (APD) for Chalk 9N-35C-M well. SRC Energy respectfully requests the COGCC to review the enclosed information and approve the exception location waiver request per Surface Use Agreement and APD for Chalk 9N-35C-M.

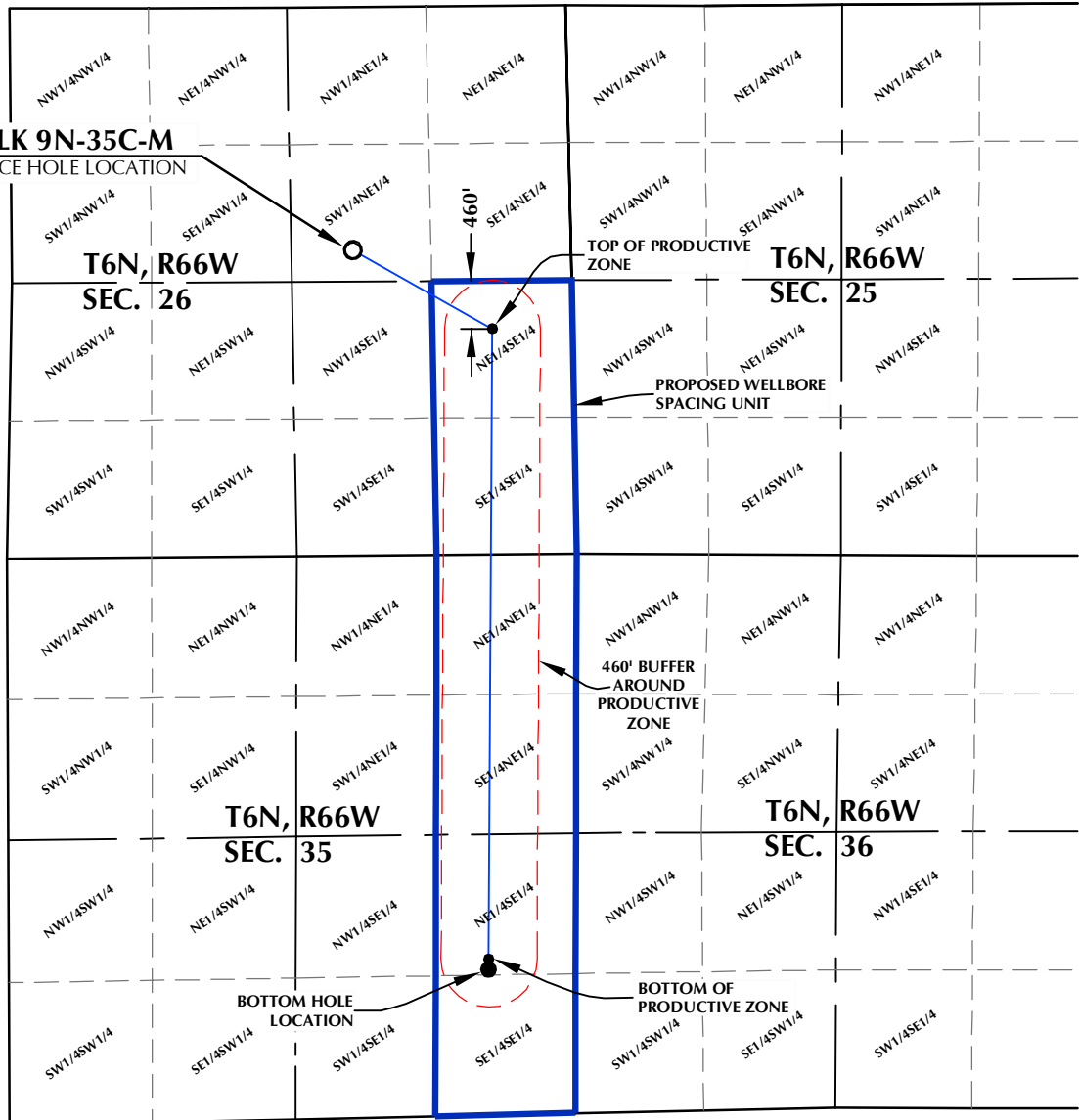
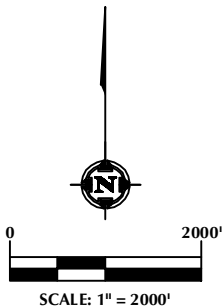
Thank you,
Erin Ekblad
Erin Ekblad
Manager of Regulatory Affairs
SRC Energy Inc.

Attachment: Proposed Spacing Unit Plat



CHALK 9N-35C-M WELLBORE SPACING UNIT

SURFACE HOLE LOCATION
GROUND ELEVATION= 4696.0'
LATITUDE= 40.460186°
LONGITUDE= -104.742359°
1/4 1/4: SW1/4 NE1/4
TOP OF PRODUCTIVE ZONE
LATITUDE= 40.458092°
LONGITUDE= -104.737572°
1/4 1/4: SW1/4 SW1/4
BOTTOM OF PRODUCTIVE ZONE
LATITUDE= 40.441499°
LONGITUDE= -104.737891°
1/4 1/4: NE1/4 SE1/4
BOTTOM HOLE LOCATION
LATITUDE= 40.441224°
LONGITUDE= -104.737896°
1/4 1/4: NE1/4 SE1/4



**DISTANCE FROM COMPLETED
PORTION OF WELLBORE TO
NEAREST UNIT BOUNDARY= 460'**

NOTES:

1. DRAWING LATITUDE AND LONGITUDE COORDINATES ARE NAD 83 (2011)(EPOCH:2010).
2. ELEVATION BASED ON NAVD88 (GEOID12B).
3. BASIS OF BEARING DERIVED FROM COLORADO COORDINATE SYSTEM OF 1983 NORTH ZONE.
4. ALL MEASURED DISTANCES ARE GRID.
COMBINED SCALE FACTOR: .99974177 CALCULATED FROM THE E. 1/4 CORNER OF SECTION 26, T6N, R66W.

WELL PAD - CHALK-SEELEY FEDERAL 7-26 PAD

CHALK 9N-35C-M
WELLBORE SPACING UNIT
2331' FNL & 2091' FEL SWNE (SURFACE HOLE LOCATION)
2165' FSL & 768' FEL NESE (TOP OF PRODUCTIVE ZONE)
LOCATED IN SECTION 26
1493' FSL & 836' FEL NESE (BOTTOM OF PRODUCTIVE ZONE)
1393' FSL & 836' FEL NESE (BOTTOM HOLE LOCATION)
LOCATED IN SECTION 35
T6N, R66W, 6TH P.M.
WELD COUNTY, COLORADO



SRC ENERGY
1675 Broadway, Suite 2600
Denver, Colorado 80202

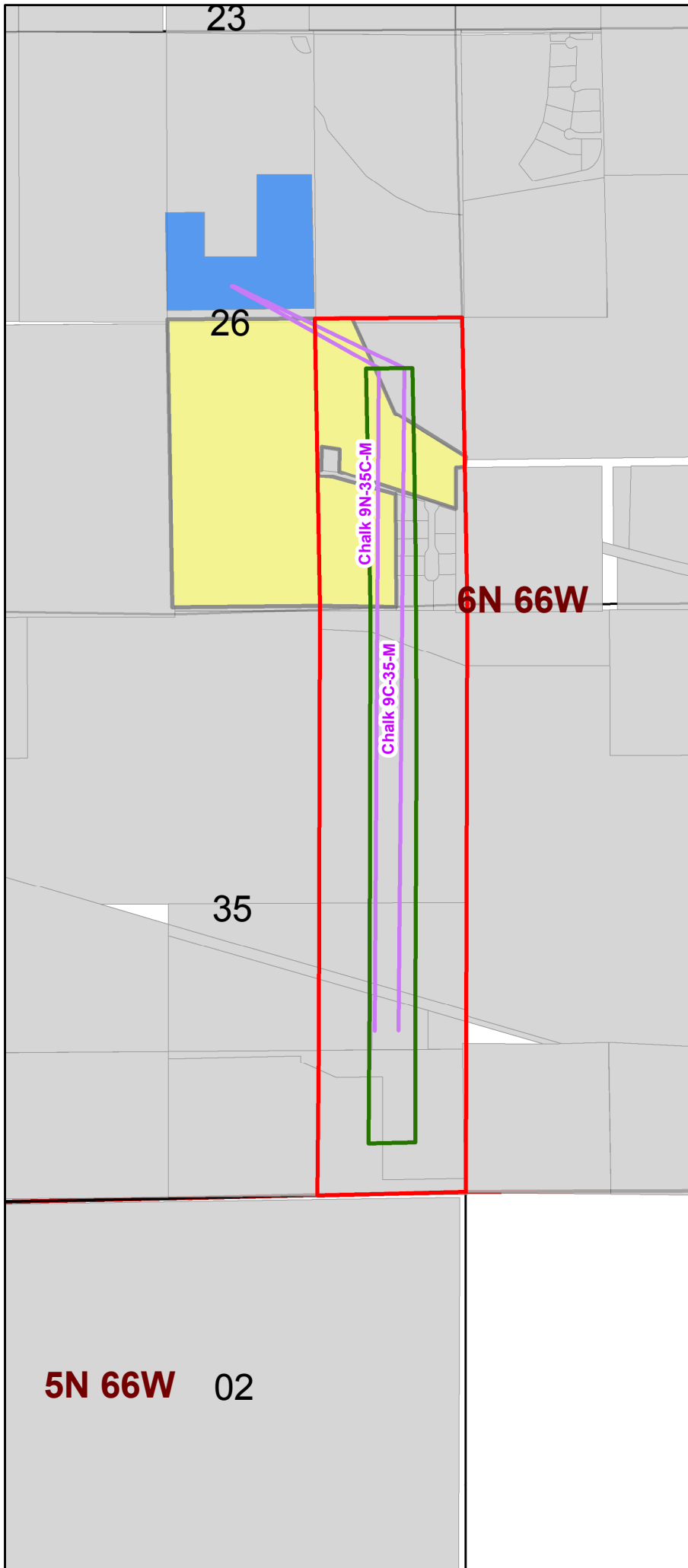


CONSULTING, LLC

SHERIDAN OFFICE
1095 Saberton Avenue
Sheridan, Wyoming 82801
Phone 307-674-0609

LOVELAND OFFICE
6706 North Franklin Avenue
Loveland, Colorado 80538
Phone 970-776-4331

DRAFTED BY:	MDB	CHECKED BY:	JRS
DATE DRAFTED:	2/28/18	DATE SURVEYED:	7/7/17
REVISED:	7/20/18	FILE NAME:	17-41






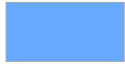


Spacing Unit Map

Chalk Wells

DSU 37

Unit 8

Legend

-  Spacing Unit Boundary
-  Hard Line Box
-  Well Path
-  Chalk Pad
-  Herman Feit et al Lease
-  SRC Leasehold

Lease Description

Lessor: Herman Feit et al.

Lessee: H. L. Willett

Reception No.: 1793398

Lease Date: 3/27/1979

Legal Description: 6N-66W, 6th P.M.

Section 26: W/2SE/4;

and parts of the E/2SE/4 better
described in metes and bounds
in the Lease

Gross Acres: 127 Acres



SRC ENERGY

