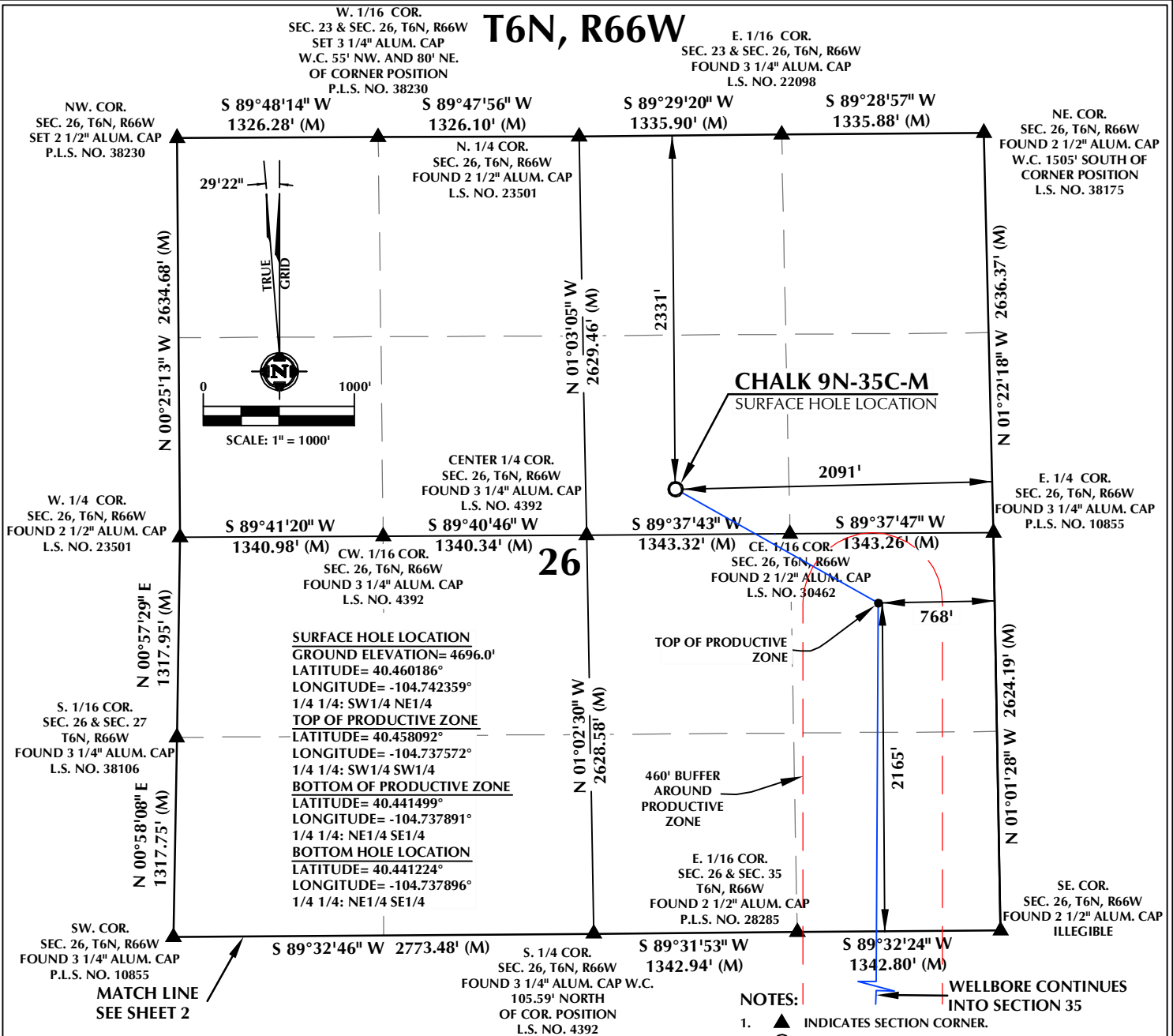


## T6N, R66W



## CERTIFICATE OF SURVEYOR:

THIS IS TO CERTIFY THAT THE ABOVE MAP WAS PREPARED FROM FIELD NOTES OF ACTUAL SURVEY MADE BY ME OR UNDER MY SUPERVISION AND THAT THE SAME ARE TRUE AND CORRECT TO THE BEST OF MY KNOWLEDGE AND BELIEF. THIS CERTIFICATE DOES NOT REPRESENT A LAND SURVEY PLAT OR IMPROVEMENT SURVEY PLAT AS DEFINED BY C.S. 19-512-102 AND CANNOT BE RELIED UPON TO DETERMINE OWNERSHIP.

JOHN R. SLAUGH  
PROFESSIONAL LAND SURVEYOR  
COLORADO REGISTRATION NUMBER 38230

NOTICE:  
ACCORDING TO COLORADO STATE LAW YOU MUST COMMENCE A LEGAL ACTION BASED UPON ANY DEFECT IN THIS SURVEY WITHIN THREE YEARS AFTER YOU FIRST DISCOVER SUCH DEFECT. IN NO EVENT MAY ANY ACTION BASED UPON ANY DEFECT IN THIS SURVEY BE COMMENCED MORE THAN TEN YEARS FROM THE DATE ON THE CERTIFICATION SHOWN HEREON.

## WELL DISTANCES:

BUILDING: ±964' SE  
BUILDING UNIT: ±1014' SE  
HIGH OCCUPANCY BUILDING UNIT: ±4406' SW  
DESIGNATED OUTSIDE ACTIVITY AREA: 5280'+  
PUBLIC ROAD: ±1654' S  
ABOVE GROUND UTILITY: ±1518' SE  
RAILROAD: 5280'+  
PROPERTY LINE: ±300' S

## NOTES:

- ▲ INDICATES SECTION CORNER.
- INDICATES CALCULATED CORNER.
- DRAWING LATITUDE AND LONGITUDE COORDINATES ARE NAD 83 (2011)(EPOCH:2010). ELEVATION BASED ON NAVD88 (GEOID12B).
- BASIS OF BEARING DERIVED FROM COLORADO COORDINATE SYSTEM OF 1983 NORTH ZONE.
- ALL MEASURED DISTANCES ARE GRID. COMBINED SCALE FACTOR: .99974177 CALCULATED FROM THE E. 1/4 CORNER OF SECTION 26, T6N, R66W.
- OPERATOR: PRESTON KNUSTEN / PDOP = 1.5.
- SEE ADDENDUM TO WELL LOCATION CERTIFICATE FOR EXISTING IMPROVEMENTS WITHIN 500' OF THE WELL PAD.
- WELL FOOTAGES ARE MEASURED AT RIGHT ANGLES TO THE SECTION LINES.
- THE BOTTOM HOLE LOCATION BEARS S00°20'54"W, 6146' FROM THE TOP OF PRODUCTIVE ZONE.

## WELL PAD - CHALK-SEELEY FEDERAL 7-26 PAD

CHALK 9N-35C-M  
WELL LOCATION CERTIFICATE  
2331' FNL & 2091' FEL SWNE (SURFACE HOLE LOCATION)  
2165' FSL & 768' FEL NESE (TOP OF PRODUCTIVE ZONE)  
LOCATED IN SECTION 26  
1493' FSL & 836' FEL NESE (BOTTOM OF PRODUCTIVE ZONE)  
1393' FSL & 836' FEL NESE (BOTTOM HOLE LOCATION)  
LOCATED IN SECTION 35  
T6N, R66W, 6TH P.M.  
WELD COUNTY, COLORADO



SRC ENERGY

1675 Broadway, Suite 2600  
Denver, Colorado 80202



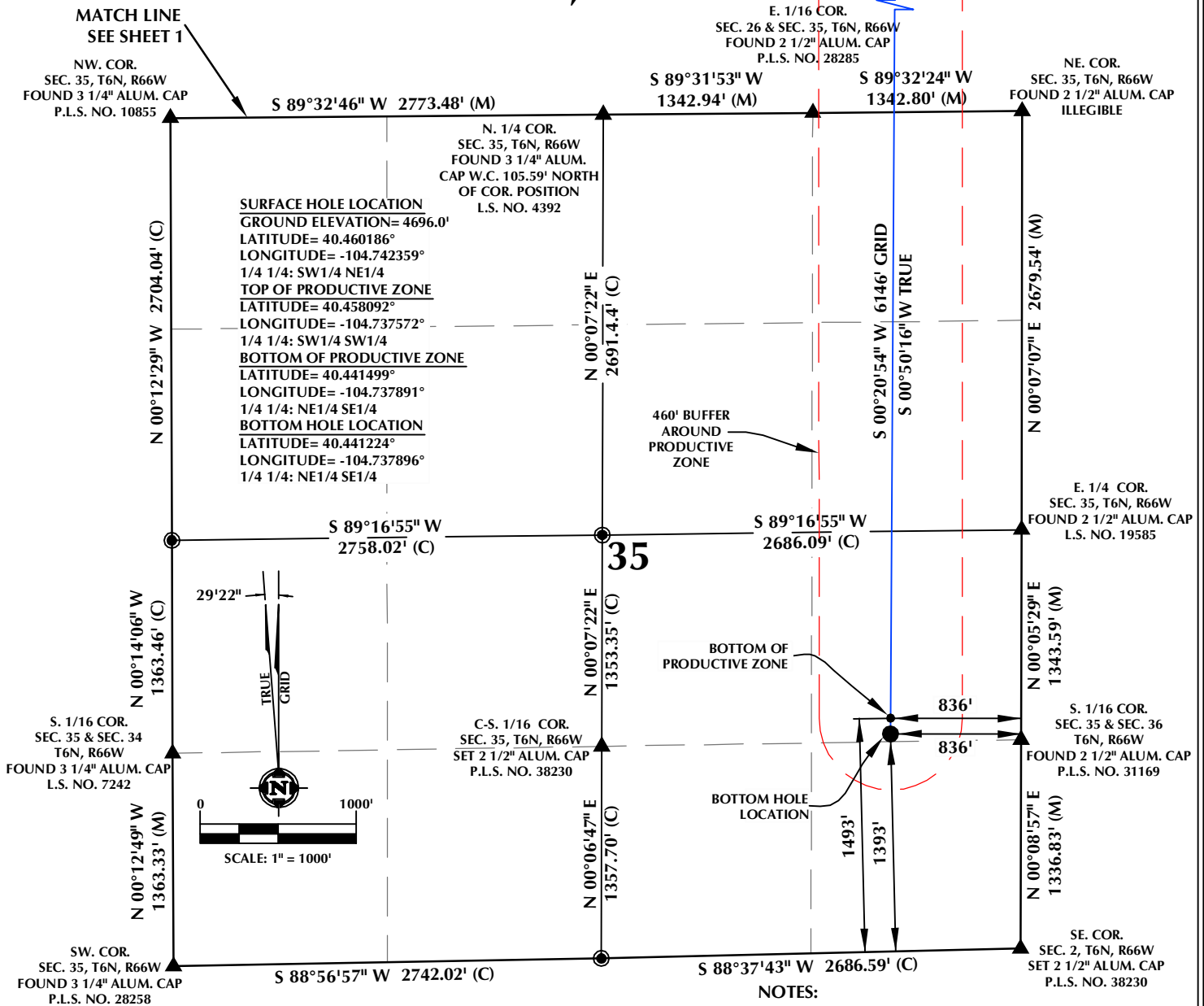
## CONSULTING, LLC

SHERIDAN OFFICE  
1095 Saberton Avenue  
Sheridan, Wyoming 82801  
Phone 307-674-0609

LOVELAND OFFICE  
6706 North Franklin Avenue  
Loveland, Colorado 80538  
Phone 970-776-4331

DRAFTED BY:	LMO	CHECKED BY:	JRS	SHEET NO:
DATE DRAFTED:	2/28/18	DATE SURVEYED:	7/7/17	1
REVISED:	7/20/18	FILE NAME:	17-41	1 OF 2

# T6N, R66W



## CERTIFICATE OF SURVEYOR:

THIS IS TO CERTIFY THAT THE ABOVE MAP WAS PREPARED FROM FIELD NOTES OF ACTUAL SURVEY MADE BY ME OR UNDER MY SUPERVISION AND THAT THE SAME ARE TRUE AND CORRECT TO THE BEST OF MY KNOWLEDGE AND BELIEF. THIS CERTIFICATE DOES NOT REPRESENT A LAND SURVEY PLAT OR IMPROVEMENT SURVEY PLAT AS DEFINED BY C.R.S. 19-5-102 AND CANNOT BE RELIED UPON TO DETERMINE OWNERSHIP.

*John R. Slaugh*  
38230  
7/20/18  
JOHN R. SLAUGH  
PROFESSIONAL LAND SURVEYOR  
COLORADO REGISTRATION NUMBER 38230

**NOTICE:**  
ACCORDING TO COLORADO STATE LAW YOU MUST COMMENCE A LEGAL ACTION BASED UPON ANY DEFECT IN THIS SURVEY WITHIN THREE YEARS AFTER YOU FIRST DISCOVER SUCH DEFECT. IN NO EVENT MAY ANY ACTION BASED UPON ANY DEFECT IN THIS SURVEY BE COMMENCED MORE THAN TEN YEARS FROM THE DATE ON THE CERTIFICATION SHOWN HEREON.

## WELL DISTANCES:

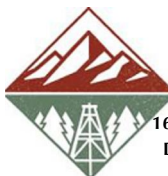
**BUILDING:** ±964' SE  
**BUILDING UNIT:** ±1014' SE  
**HIGH OCCUPANCY BUILDING UNIT:** ±4406' SW  
**DESIGNATED OUTSIDE ACTIVITY AREA:** 5280'+  
**PUBLIC ROAD:** ±1654' S  
**ABOVE GROUND UTILITY:** ±1518' SE  
**RAILROAD:** 5280'+  
**PROPERTY LINE:** ±300' S

## NOTES:

- ▲ INDICATES SECTION CORNER.
- INDICATES CALCULATED CORNER.
- DRAWING LATITUDE AND LONGITUDE COORDINATES ARE NAD 83 (2011)(EPOCH:2010).
- ELEVATION BASED ON NAVD88 (GEOID12B).
- BASIS OF BEARING DERIVED FROM COLORADO COORDINATE SYSTEM OF 1983 NORTH ZONE.
- ALL MEASURED DISTANCES ARE GRID.  
COMBINED SCALE FACTOR: .99974177 CALCULATED FROM THE E. 1/4 CORNER OF SECTION 26, T6N, R66W.
- OPERATOR: PRESTON KNUTSEN / PDOP = 1.5.
- SEE ADDENDUM TO WELL LOCATION CERTIFICATE FOR EXISTING IMPROVEMENTS WITHIN 500' OF THE WELL PAD.
- WELL FOOTAGES ARE MEASURED AT RIGHT ANGLES TO THE SECTION LINES.
- THE BOTTOM HOLE LOCATION BEARS S00°20'54"W, 6146' FROM THE TOP OF PRODUCTIVE ZONE.

## WELL PAD - CHALK-SEELEY FEDERAL 7-26 PAD

CHALK 9N-35C-M  
WELL LOCATION CERTIFICATE  
2331' FNL & 2091' FEL SWNE (SURFACE HOLE LOCATION)  
2165' FSL & 768' FEL NESE (TOP OF PRODUCTIVE ZONE)  
LOCATED IN SECTION 26  
1493' FSL & 836' FEL NESE (BOTTOM OF PRODUCTIVE ZONE)  
1393' FSL & 836' FEL NESE (BOTTOM HOLE LOCATION)  
LOCATED IN SECTION 35  
T6N, R66W, 6TH P.M.  
WELD COUNTY, COLORADO



**SRC ENERGY**

1675 Broadway, Suite 2600  
Denver, Colorado 80202



## CONSULTING, LLC

**SHERIDAN OFFICE**  
1095 Saberton Avenue  
Sheridan, Wyoming 82801  
Phone 307-674-0609

**LOVELAND OFFICE**  
6706 North Franklin Avenue  
Loveland, Colorado 80538  
Phone 970-776-4331

DRAFTED BY:	LMO	CHECKED BY:	JRS	SHEET NO:
DATE DRAFTED:	2/28/18	DATE SURVEYED:	7/7/17	2
REVISED:	7/20/18	FILE NAME:	17-41	2 OF 2