

SRC ENERGY

Location: COLORADO Slot: SLOT#30 CHALK 15C-2-XR (2330'FNL & 2191'FEL, SEC.26)
Field: WELD COUNTY (NAD83, TRUE NORTH) Well: CHALK 15C-2-XR
Facility: SEC.26-T06N-R66W Wellbore: CHALK 15C-2-XR PWB

Plot reference wellpath is CHALK 15C-2-XR (REV-B.0) PWP	Grid System: NAD83 / Lambert Colorado SP, Northern Zone (501), US feet
True vertical depths are referenced to PROPETRO 12 (4) (RKB)	* = Wellpath was transformed from a different geodetic datum
Measured depths are referenced to PROPETRO 12 (4) (RKB)	North Reference: True north
PROPETRO 12 (4) (RKB) to Mean Sea Level: 4701 feet	Scale: True distance
Mean Sea Level to Mud line (At Slot: SLOT#30 CHALK 15C-2-XR (2330'FNL & 2191'FEL, SEC.26)): 0 feet	Depths are in feet
Coordinates are in feet referenced to Slot	Created by: doddanna on 2018-08-08
	Database: WellArchitectDB2

Location Information

Facility Name				Grid East (US ft)	Grid North (US ft)	Latitude	Longitude
SEC.26-T06N-R66W				3211308.441	1412009.191	40°27'42.779"N	104°44'26.117"W
Slot	Local N (ft)	Local E (ft)		Grid East (US ft)	Grid North (US ft)	Latitude	Longitude
SLOT#30 CHALK 15C-2-XR (2330'FNL & 2191'FEL, SEC.26)	-617.51	-592.72		3210721.051	1411366.643	40°27'36.677"N	104°44'33.785"W
PROPETRO 12 (4) (RKB) to Mud line (At Slot: SLOT#30 CHALK 15C-2-XR (2330'FNL & 2191'FEL, SEC.26))							4701ft
Mean Sea Level to Mud line (At Slot: SLOT#30 CHALK 15C-2-XR (2330'FNL & 2191'FEL, SEC.26))							0ft
PROPETRO 12 (4) (RKB) to Mean Sea Level							4701ft

Survey Program

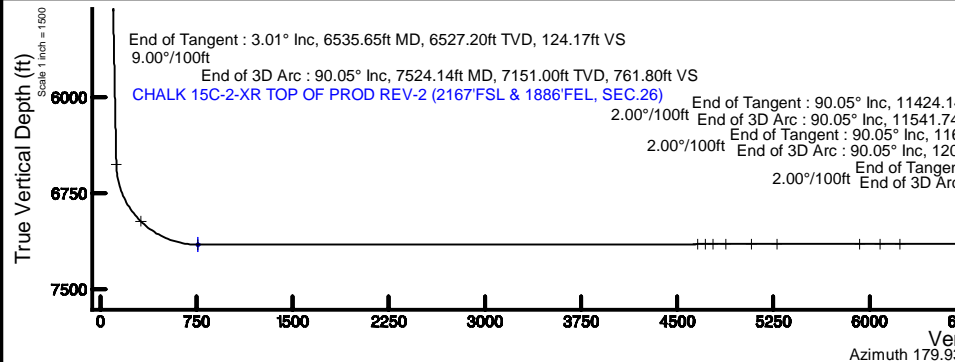
Start MD (ft)	End MD (ft)	Tool	Model	Log Name/Comment	Wellbore
4.00	1750.00	BHII NavTrak	BHII NavTrak (Rotating+Axial Corr)		CHALK 15C-2-XR PWB
1750.00	20209.41	BHII AutoTrak Curve	BHII AutoTrak Curve (MagCAD+IFR1, Short spacing)		CHALK 15C-2-XR PWB

Well Profile Data

Design Comment	MD (ft)	Inc (°)	Az (°)	TVD (ft)	Local N (ft)	Local E (ft)	DLS (°/100ft)	VS (ft)
Tie On	4.00	0.000	112.526	4.00	0.00	0.00	0.00	0.00
End of Tangent	300.00	0.000	112.526	300.00	0.00	0.00	0.00	0.00
End of Build	450.39	3.008	112.526	450.32	-1.51	3.65	2.00	1.52
End of Tangent	6535.65	3.008	112.526	6527.20	-123.83	298.58	0.00	124.17
End of 3D Arc	7524.14	90.050	181.352	7151.00	-761.44	314.13	9.00	761.80
End of Tangent	11424.14	90.050	181.352	7147.60	-4660.35	222.11	0.00	4660.60
End of 3D Arc	11541.74	90.050	179.000	7147.49	-4777.94	221.75	2.00	4778.19
End of Tangent	11641.74	90.050	179.000	7147.41	-4877.93	223.50	0.00	4878.18
End of 3D Arc	12041.74	90.050	187.000	7147.06	-5277.05	202.58	2.00	5277.28
End of Tangent	12691.74	90.050	187.000	7146.49	-5922.21	123.37	0.00	5922.35
End of 3D Arc	13007.47	90.050	180.685	7146.21	-6237.08	102.22	2.00	6237.19
End of Tangent	20109.20	90.050	180.685	7140.00	-13338.30	17.28	0.00	13338.31
End of 3D Arc	20133.83	89.993	181.175	7139.99	-13362.92	16.88	2.00	13362.93
End of Tangent	20209.41	89.993	181.175	7140.00	-13438.48	15.33	0.00	13438.49

Hole and Casing Sections

Name	Start MD (ft)	End MD (ft)	Interval (ft)	Start TVD (ft)	End TVD (ft)	Start Local N (ft)	Start Local E (ft)	End Local N (ft)	End Local E (ft)	Wellbore
13.5in Open Hole	4.00	1750.00	1746.00	4.00	1748.14	0.00	0.00	-27.64	66.63	CHALK 15C-2-XR PWB
9.625in Casing Surface	4.00	1750.00	1746.00	4.00	1748.14	0.00	0.00	-27.64	66.63	CHALK 15C-2-XR PWB
8.5in Open Hole	1750.00	20209.41	18459.41	1748.14	7140.00	-27.64	66.63	-13438.48	15.33	CHALK 15C-2-XR PWB



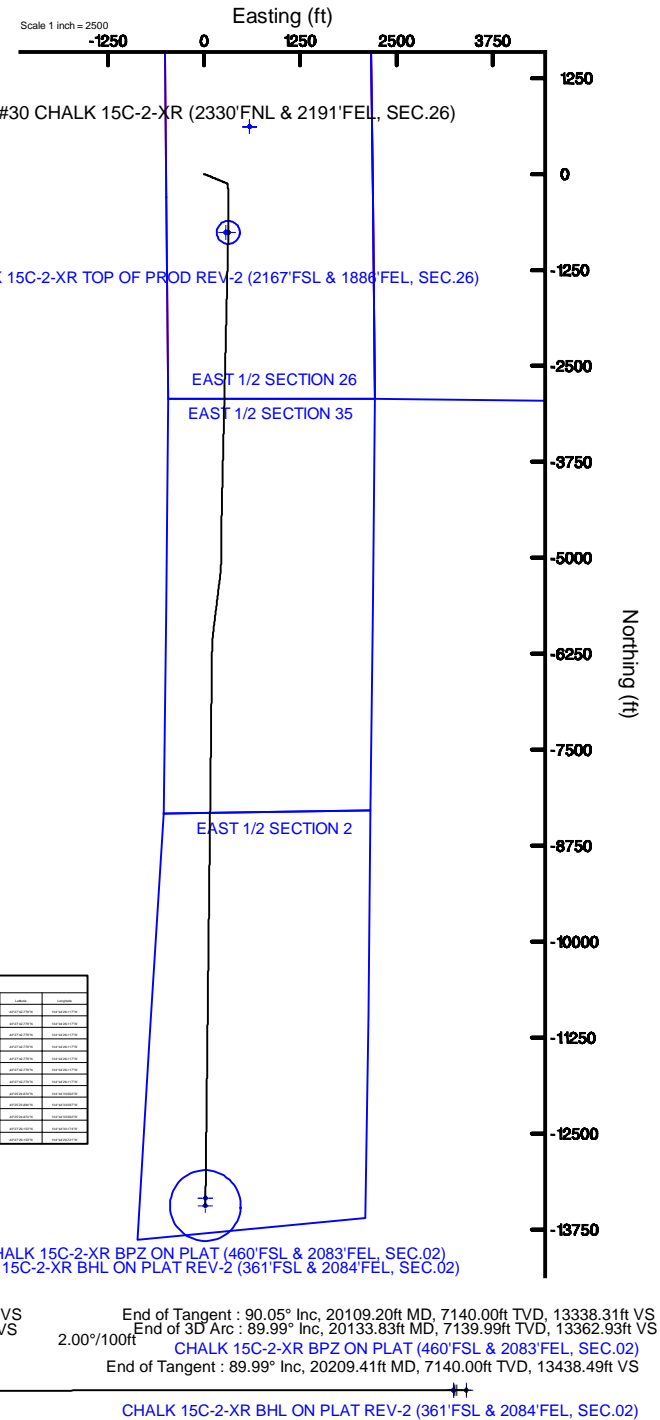
SRC ENERGY



BGM (1900.0 to 2019.0) Dip: 66.86° Field: 52318.8 nT
Magnetic North is 8.28 degrees East of True North (as of 7/2018)

To correct azimuth from Magnetic to True add 8.28 degrees

Targets									
Name	MD (ft)	Inc (°)	Az (°)	TVD (ft)	Local N (ft)	Local E (ft)	DLS (°/100ft)	VS (ft)	Wellbore
CHALK 15C-2-XR BPZ ON PLAT (460'FSL & 2083'FEL, SEC.02)	20109.20	90.05	181.17	7140.00	-13338.30	17.28	0.00	13338.31	CHALK 15C-2-XR PWB
CHALK 15C-2-XR BHL ON PLAT REV-2 (361'FSL & 2084'FEL, SEC.02)	20209.41	89.99	181.17	7140.00	-13438.48	15.33	0.00	13438.49	CHALK 15C-2-XR PWB
CHALK 15C-2-XR TOP OF PROD REV-2 (2167'FSL & 1886'FEL, SEC.26)	7524.14	90.05	181.35	7151.00	-761.44	314.13	9.00	761.80	CHALK 15C-2-XR PWB
CHALK 15C-2-XR BPZ ON PLAT (460'FSL & 2083'FEL, SEC.02)	20109.20	90.05	181.17	7140.00	-13338.30	17.28	0.00	13338.31	CHALK 15C-2-XR PWB
CHALK 15C-2-XR BHL ON PLAT REV-2 (361'FSL & 2084'FEL, SEC.02)	20209.41	89.99	181.17	7140.00	-13438.48	15.33	0.00	13438.49	CHALK 15C-2-XR PWB
CHALK 15C-2-XR TOP OF PROD REV-2 (2167'FSL & 1886'FEL, SEC.26)	7524.14	90.05	181.35	7151.00	-761.44	314.13	9.00	761.80	CHALK 15C-2-XR PWB
CHALK 15C-2-XR BPZ ON PLAT (460'FSL & 2083'FEL, SEC.02)	20109.20	90.05	181.17	7140.00	-13338.30	17.28	0.00	13338.31	CHALK 15C-2-XR PWB
CHALK 15C-2-XR BHL ON PLAT REV-2 (361'FSL & 2084'FEL, SEC.02)	20209.41	89.99	181.17	7140.00	-13438.48	15.33	0.00	13438.49	CHALK 15C-2-XR PWB
CHALK 15C-2-XR TOP OF PROD REV-2 (2167'FSL & 1886'FEL, SEC.26)	7524.14	90.05	181.35	7151.00	-761.44	314.13	9.00	761.80	CHALK 15C-2-XR PWB



CHALK_15C-2-XR__REV-B.0__PWP.las

~VERSION INFORMATION

VERS. 2.0 : CWLS LOG ASCII STANDARD-VERSION 2.0

WRAP. NO : ASCII DATA SECTION CONTAINS ONE ROW PER WELLPATH STATION

~WELL INFORMATION

#MNEM	.UNITS	DATA	:DESCRIPTION
#----	.-----	----	:-----
STRT	.ft	0.00	:START MD
STOP	.ft	20209.41	:STOP MD
STEP	.ft	0.0	:STEP (non-uniform increment)
NULL	.	-999.99	:NULL
COMP	.	SRC ENERGY	:OPERATOR
WELL	.	CHALK 15C-2-XR	:WELL
FLD	.	WELD COUNTY (NAD83,TRUE NORTH)	:FIELD
LOC	.	COLORADO	:AREA (aka: Location)
CNTY	.	N/A	:COUNTY
STAT	.	N/A	:STATE
CTRY	.	N/A	:COUNTRY
SRVC	.	Baker Hughes	:CONTRACTOR
DATE	.	04/25/2018	:LOG REV DATE
API	.		:API NUMBER

~OTHER INFORMATION

#Software: WellArchitect(R) Version 5.0

#MNEM	.UNITS	DATA	:DESCRIPTION
#----	.-----	----	:-----
WPTYPE	.	PLANNED WELLPATH	:WELLPATH TYPE
FACILITY	.	SEC.26-T06N-R66W	:FACILITY
SLOT	.	SLOT#30 CHALK 15C-2-XR (2330'FNL & 2191'FEL, SEC.26)	:SLOT
WELLBORE	.	CHALK 15C-2-XR PWB	:WELLBORE
WELLPATH	.	CHALK 15C-2-XR (REV-B.0) PWP	:WELLPATH
MDREFPT	.	PROPETRO 12 (4') (RKB)	:MD REFERENCE POINT
TVDREFPT	.	PROPETRO 12 (4') (RKB)	:TVD REFERENCE POINT
LCLREFPT	.	Slot	:LOCAL COORDINATE REFERENCE PT

CHALK_15C-2-XR__REV-B.0__PWP.las

VSAZIMUTH.deg	179.93	:VERTICAL SECTION AZIMUTH
VSORIGN .ft	0.00	:VERTICAL SECTION ORIGIN NORTH
VSORIGE .ft	0.00	:VERTICAL SECTION ORIGIN EAST

~CURVE (WELLPATH) INFORMATION

#MNEM	.UNITS	:DESCRIPTION
#----	.-----	:-----
DEPT	.ft	:MEASURED DEPTH
INC	.deg	:INCLINATION
AZI	.deg	:AZIMUTH
TVD	.ft	:TRUE VERTICAL DEPTH
SECT	.ft	:CROSS SECTION (CURTAIN/VERTICAL)
LOCALN	.ft	:LOCAL NORTH
LOCALE	.ft	:LOCAL EAST
LAT	.deg	:LATITUDE
LONG	.deg	:LONGITUDE
DLS	.deg/100ft	:DOGLEG SEVERITY

~ASCII DATA

0.00	0.00	112.53	0.00	0.00	0.00	0.00	40.4601881	-104.7427181	0.00
4.00	0.00	112.53	4.00	0.00	0.00	0.00	40.4601881	-104.7427181	0.00
104.00	0.00	112.53	104.00	0.00	0.00	0.00	40.4601881	-104.7427181	0.00
204.00	0.00	112.53	204.00	0.00	0.00	0.00	40.4601881	-104.7427181	0.00
300.00	0.00	112.53	300.00	0.00	0.00	0.00	40.4601881	-104.7427181	0.00
304.00	0.08	112.53	304.00	0.00	0.00	0.00	40.4601881	-104.7427180	2.00
404.00	2.08	112.53	403.98	0.73	-0.72	1.74	40.4601861	-104.7427118	2.00
450.39	3.01	112.53	450.32	1.52	-1.51	3.65	40.4601839	-104.7427050	2.00
504.00	3.01	112.53	503.86	2.60	-2.59	6.24	40.4601809	-104.7426956	0.00
604.00	3.01	112.53	603.72	4.61	-4.60	11.09	40.4601754	-104.7426782	0.00
704.00	3.01	112.53	703.58	6.63	-6.61	15.94	40.4601699	-104.7426608	0.00
804.00	3.01	112.53	803.44	8.64	-8.62	20.78	40.4601644	-104.7426434	0.00
904.00	3.01	112.53	903.31	10.66	-10.63	25.63	40.4601589	-104.7426259	0.00
1004.00	3.01	112.53	1003.17	12.68	-12.64	30.48	40.4601534	-104.7426085	0.00
1104.00	3.01	112.53	1103.03	14.69	-14.65	35.32	40.4601478	-104.7425911	0.00

CHALK_15C-2-XR__REV-B.0__PWP.las

1204.00	3.01	112.53	1202.89	16.71	-16.66	40.17	40.4601423	-104.7425737	0.00
1304.00	3.01	112.53	1302.76	18.72	-18.67	45.02	40.4601368	-104.7425563	0.00
1404.00	3.01	112.53	1402.62	20.74	-20.68	49.86	40.4601313	-104.7425389	0.00
1504.00	3.01	112.53	1502.48	22.75	-22.69	54.71	40.4601258	-104.7425214	0.00
1604.00	3.01	112.53	1602.34	24.77	-24.70	59.56	40.4601203	-104.7425040	0.00
1704.00	3.01	112.53	1702.20	26.78	-26.71	64.40	40.4601147	-104.7424866	0.00
1804.00	3.01	112.53	1802.07	28.80	-28.72	69.25	40.4601092	-104.7424692	0.00
1904.00	3.01	112.53	1901.93	30.82	-30.73	74.10	40.4601037	-104.7424518	0.00
2004.00	3.01	112.53	2001.79	32.83	-32.74	78.94	40.4600982	-104.7424344	0.00
2104.00	3.01	112.53	2101.65	34.85	-34.75	83.79	40.4600927	-104.7424169	0.00
2204.00	3.01	112.53	2201.52	36.86	-36.76	88.64	40.4600871	-104.7423995	0.00
2304.00	3.01	112.53	2301.38	38.88	-38.77	93.49	40.4600816	-104.7423821	0.00
2404.00	3.01	112.53	2401.24	40.89	-40.78	98.33	40.4600761	-104.7423647	0.00
2504.00	3.01	112.53	2501.10	42.91	-42.79	103.18	40.4600706	-104.7423473	0.00
2604.00	3.01	112.53	2600.96	44.93	-44.80	108.03	40.4600651	-104.7423299	0.00
2704.00	3.01	112.53	2700.83	46.94	-46.81	112.87	40.4600596	-104.7423124	0.00
2804.00	3.01	112.53	2800.69	48.96	-48.82	117.72	40.4600540	-104.7422950	0.00
2904.00	3.01	112.53	2900.55	50.97	-50.83	122.57	40.4600485	-104.7422776	0.00
3004.00	3.01	112.53	3000.41	52.99	-52.84	127.41	40.4600430	-104.7422602	0.00
3104.00	3.01	112.53	3100.28	55.00	-54.85	132.26	40.4600375	-104.7422428	0.00
3204.00	3.01	112.53	3200.14	57.02	-56.86	137.11	40.4600320	-104.7422254	0.00
3304.00	3.01	112.53	3300.00	59.04	-58.87	141.95	40.4600265	-104.7422079	0.00
3404.00	3.01	112.53	3399.86	61.05	-60.88	146.80	40.4600209	-104.7421905	0.00
3504.00	3.01	112.53	3499.72	63.07	-62.89	151.65	40.4600154	-104.7421731	0.00
3604.00	3.01	112.53	3599.59	65.08	-64.90	156.49	40.4600099	-104.7421557	0.00
3704.00	3.01	112.53	3699.45	67.10	-66.91	161.34	40.4600044	-104.7421383	0.00
3804.00	3.01	112.53	3799.31	69.11	-68.92	166.19	40.4599989	-104.7421209	0.00
3904.00	3.01	112.53	3899.17	71.13	-70.93	171.03	40.4599933	-104.7421034	0.00
4004.00	3.01	112.53	3999.04	73.15	-72.94	175.88	40.4599878	-104.7420860	0.00
4104.00	3.01	112.53	4098.90	75.16	-74.95	180.73	40.4599823	-104.7420686	0.00
4204.00	3.01	112.53	4198.76	77.18	-76.96	185.57	40.4599768	-104.7420512	0.00
4304.00	3.01	112.53	4298.62	79.19	-78.97	190.42	40.4599713	-104.7420338	0.00
4404.00	3.01	112.53	4398.48	81.21	-80.99	195.27	40.4599658	-104.7420164	0.00
4504.00	3.01	112.53	4498.35	83.22	-83.00	200.11	40.4599602	-104.7419989	0.00

CHALK_15C-2-XR__REV-B.0__PWP.las

4604.00	3.01	112.53	4598.21	85.24	-85.01	204.96	40.4599547	-104.7419815	0.00
4704.00	3.01	112.53	4698.07	87.25	-87.02	209.81	40.4599492	-104.7419641	0.00
4804.00	3.01	112.53	4797.93	89.27	-89.03	214.65	40.4599437	-104.7419467	0.00
4904.00	3.01	112.53	4897.80	91.29	-91.04	219.50	40.4599382	-104.7419293	0.00
5004.00	3.01	112.53	4997.66	93.30	-93.05	224.35	40.4599327	-104.7419118	0.00
5104.00	3.01	112.53	5097.52	95.32	-95.06	229.19	40.4599271	-104.7418944	0.00
5204.00	3.01	112.53	5197.38	97.33	-97.07	234.04	40.4599216	-104.7418770	0.00
5304.00	3.01	112.53	5297.24	99.35	-99.08	238.89	40.4599161	-104.7418596	0.00
5404.00	3.01	112.53	5397.11	101.36	-101.09	243.73	40.4599106	-104.7418422	0.00
5504.00	3.01	112.53	5496.97	103.38	-103.10	248.58	40.4599051	-104.7418248	0.00
5604.00	3.01	112.53	5596.83	105.40	-105.11	253.43	40.4598995	-104.7418073	0.00
5704.00	3.01	112.53	5696.69	107.41	-107.12	258.27	40.4598940	-104.7417899	0.00
5804.00	3.01	112.53	5796.56	109.43	-109.13	263.12	40.4598885	-104.7417725	0.00
5904.00	3.01	112.53	5896.42	111.44	-111.14	267.97	40.4598830	-104.7417551	0.00
6004.00	3.01	112.53	5996.28	113.46	-113.15	272.81	40.4598775	-104.7417377	0.00
6104.00	3.01	112.53	6096.14	115.47	-115.16	277.66	40.4598720	-104.7417203	0.00
6204.00	3.01	112.53	6196.01	117.49	-117.17	282.51	40.4598664	-104.7417028	0.00
6304.00	3.01	112.53	6295.87	119.51	-119.18	287.35	40.4598609	-104.7416854	0.00
6404.00	3.01	112.53	6395.73	121.52	-121.19	292.20	40.4598554	-104.7416680	0.00
6504.00	3.01	112.53	6495.59	123.54	-123.20	297.05	40.4598499	-104.7416506	0.00
6535.65	3.01	112.53	6527.20	124.17	-123.83	298.58	40.4598481	-104.7416451	0.00
6604.00	7.76	160.28	6595.25	129.21	-128.87	301.80	40.4598343	-104.7416335	9.00
6704.00	16.47	171.81	6692.94	149.65	-149.30	306.11	40.4597782	-104.7416180	9.00
6804.00	25.38	175.42	6786.26	185.12	-184.77	309.84	40.4596809	-104.7416046	9.00
6904.00	34.34	177.24	6872.89	234.77	-234.41	312.92	40.4595446	-104.7415936	9.00
7004.00	43.31	178.37	6950.72	297.35	-296.99	315.26	40.4593728	-104.7415852	9.00
7104.00	52.29	179.18	7017.83	371.34	-370.98	316.80	40.4591698	-104.7415796	9.00
7204.00	61.28	179.81	7072.55	454.91	-454.55	317.52	40.4589404	-104.7415770	9.00
7304.00	70.26	180.34	7113.55	546.01	-545.65	317.38	40.4586903	-104.7415775	9.00
7404.00	79.25	180.82	7139.82	642.39	-642.03	316.40	40.4584258	-104.7415811	9.00
7504.00	88.24	181.26	7150.70	741.67	-741.31	314.59	40.4581532	-104.7415876	9.00
7524.14	90.05	181.35	7151.00	761.80	-761.44	314.13	40.4580980	-104.7415892	9.00
7604.00	90.05	181.35	7150.93	841.64	-841.28	312.25	40.4578788	-104.7415960	0.00
7704.00	90.05	181.35	7150.84	941.61	-941.25	309.89	40.4576044	-104.7416045	0.00

CHALK_15C-2-XR__REV-B.0__PWP.las

7804.00	90.05	181.35	7150.76	1041.58	-1041.23	307.53	40.4573300	-104.7416130	0.00
7904.00	90.05	181.35	7150.67	1141.54	-1141.20	305.17	40.4570556	-104.7416215	0.00
8004.00	90.05	181.35	7150.58	1241.51	-1241.17	302.81	40.4567812	-104.7416299	0.00
8104.00	90.05	181.35	7150.49	1341.48	-1341.14	300.45	40.4565068	-104.7416384	0.00
8204.00	90.05	181.35	7150.41	1441.45	-1441.11	298.09	40.4562324	-104.7416469	0.00
8304.00	90.05	181.35	7150.32	1541.42	-1541.09	295.73	40.4559580	-104.7416554	0.00
8404.00	90.05	181.35	7150.23	1641.39	-1641.06	293.37	40.4556836	-104.7416639	0.00
8504.00	90.05	181.35	7150.14	1741.36	-1741.03	291.01	40.4554091	-104.7416723	0.00
8604.00	90.05	181.35	7150.06	1841.33	-1841.00	288.65	40.4551347	-104.7416808	0.00
8704.00	90.05	181.35	7149.97	1941.30	-1940.97	286.29	40.4548603	-104.7416893	0.00
8804.00	90.05	181.35	7149.88	2041.27	-2040.95	283.94	40.4545859	-104.7416978	0.00
8904.00	90.05	181.35	7149.80	2141.24	-2140.92	281.58	40.4543115	-104.7417063	0.00
9004.00	90.05	181.35	7149.71	2241.21	-2240.89	279.22	40.4540371	-104.7417148	0.00
9104.00	90.05	181.35	7149.62	2341.18	-2340.86	276.86	40.4537627	-104.7417232	0.00
9204.00	90.05	181.35	7149.53	2441.15	-2440.83	274.50	40.4534883	-104.7417317	0.00
9304.00	90.05	181.35	7149.45	2541.12	-2540.81	272.14	40.4532139	-104.7417402	0.00
9404.00	90.05	181.35	7149.36	2641.09	-2640.78	269.78	40.4529394	-104.7417487	0.00
9504.00	90.05	181.35	7149.27	2741.05	-2740.75	267.42	40.4526650	-104.7417572	0.00
9604.00	90.05	181.35	7149.18	2841.02	-2840.72	265.06	40.4523906	-104.7417657	0.00
9704.00	90.05	181.35	7149.10	2940.99	-2940.70	262.70	40.4521162	-104.7417741	0.00
9804.00	90.05	181.35	7149.01	3040.96	-3040.67	260.34	40.4518418	-104.7417826	0.00
9904.00	90.05	181.35	7148.92	3140.93	-3140.64	257.98	40.4515674	-104.7417911	0.00
10004.00	90.05	181.35	7148.84	3240.90	-3240.61	255.62	40.4512930	-104.7417996	0.00
10104.00	90.05	181.35	7148.75	3340.87	-3340.58	253.26	40.4510186	-104.7418081	0.00
10204.00	90.05	181.35	7148.66	3440.84	-3440.56	250.90	40.4507442	-104.7418165	0.00
10304.00	90.05	181.35	7148.57	3540.81	-3540.53	248.54	40.4504697	-104.7418250	0.00
10404.00	90.05	181.35	7148.49	3640.78	-3640.50	246.18	40.4501953	-104.7418335	0.00
10504.00	90.05	181.35	7148.40	3740.75	-3740.47	243.82	40.4499209	-104.7418420	0.00
10604.00	90.05	181.35	7148.31	3840.72	-3840.44	241.46	40.4496465	-104.7418505	0.00
10704.00	90.05	181.35	7148.23	3940.69	-3940.42	239.11	40.4493721	-104.7418589	0.00
10804.00	90.05	181.35	7148.14	4040.66	-4040.39	236.75	40.4490977	-104.7418674	0.00
10904.00	90.05	181.35	7148.05	4140.63	-4140.36	234.39	40.4488233	-104.7418759	0.00
11004.00	90.05	181.35	7147.96	4240.59	-4240.33	232.03	40.4485489	-104.7418844	0.00
11104.00	90.05	181.35	7147.88	4340.56	-4340.31	229.67	40.4482745	-104.7418929	0.00

CHALK_15C-2-XR__REV-B.0__PWP.las

11204.00	90.05	181.35	7147.79	4440.53	-4440.28	227.31	40.4480000	-104.7419014	0.00
11304.00	90.05	181.35	7147.70	4540.50	-4540.25	224.95	40.4477256	-104.7419098	0.00
11404.00	90.05	181.35	7147.61	4640.47	-4640.22	222.59	40.4474512	-104.7419183	0.00
11424.14	90.05	181.35	7147.60	4660.60	-4660.35	222.11	40.4473960	-104.7419200	0.00
11504.00	90.05	179.76	7147.53	4740.46	-4740.21	221.34	40.4471768	-104.7419228	2.00
11541.74	90.05	179.00	7147.49	4778.19	-4777.94	221.75	40.4470732	-104.7419213	2.00
11604.00	90.05	179.00	7147.44	4840.45	-4840.20	222.84	40.4469023	-104.7419174	0.00
11641.74	90.05	179.00	7147.41	4878.18	-4877.93	223.50	40.4467988	-104.7419151	0.00
11704.00	90.05	180.25	7147.35	4940.44	-4940.19	223.91	40.4466279	-104.7419136	2.00
11804.00	90.05	182.25	7147.26	5040.41	-5040.16	221.73	40.4463534	-104.7419214	2.00
11904.00	90.05	184.25	7147.18	5140.24	-5139.99	216.07	40.4460794	-104.7419417	2.00
12004.00	90.05	186.25	7147.09	5239.80	-5239.57	206.93	40.4458061	-104.7419746	2.00
12041.74	90.05	187.00	7147.06	5277.28	-5277.05	202.58	40.4457032	-104.7419902	2.00
12104.00	90.05	187.00	7147.00	5339.07	-5338.85	194.99	40.4455336	-104.7420175	0.00
12204.00	90.05	187.00	7146.92	5438.31	-5438.11	182.81	40.4452611	-104.7420613	0.00
12304.00	90.05	187.00	7146.83	5537.56	-5537.36	170.62	40.4449887	-104.7421051	0.00
12404.00	90.05	187.00	7146.74	5636.80	-5636.62	158.43	40.4447162	-104.7421488	0.00
12504.00	90.05	187.00	7146.65	5736.04	-5735.87	146.24	40.4444438	-104.7421926	0.00
12604.00	90.05	187.00	7146.57	5835.28	-5835.13	134.06	40.4441714	-104.7422364	0.00
12691.74	90.05	187.00	7146.49	5922.35	-5922.21	123.37	40.4439323	-104.7422748	0.00
12704.00	90.05	186.76	7146.48	5934.52	-5934.39	121.90	40.4438989	-104.7422801	2.00
12804.00	90.05	184.76	7146.39	6034.00	-6033.88	111.87	40.4436258	-104.7423161	2.00
12904.00	90.05	182.76	7146.30	6133.77	-6133.66	105.32	40.4433519	-104.7423397	2.00
13004.00	90.05	180.76	7146.22	6233.72	-6233.60	102.26	40.4430776	-104.7423507	2.00
13007.47	90.05	180.69	7146.21	6237.19	-6237.08	102.22	40.4430681	-104.7423508	2.00
13104.00	90.05	180.69	7146.13	6333.71	-6333.60	101.06	40.4428031	-104.7423550	0.00
13204.00	90.05	180.69	7146.04	6433.70	-6433.59	99.87	40.4425286	-104.7423593	0.00
13304.00	90.05	180.69	7145.95	6533.69	-6533.58	98.67	40.4422542	-104.7423636	0.00
13404.00	90.05	180.69	7145.87	6633.68	-6633.58	97.47	40.4419797	-104.7423679	0.00
13504.00	90.05	180.69	7145.78	6733.67	-6733.57	96.28	40.4417052	-104.7423722	0.00
13604.00	90.05	180.69	7145.69	6833.67	-6833.56	95.08	40.4414308	-104.7423765	0.00
13704.00	90.05	180.69	7145.60	6933.66	-6933.55	93.89	40.4411563	-104.7423808	0.00
13804.00	90.05	180.69	7145.52	7033.65	-7033.55	92.69	40.4408818	-104.7423851	0.00
13904.00	90.05	180.69	7145.43	7133.64	-7133.54	91.49	40.4406074	-104.7423894	0.00

CHALK_15C-2-XR__REV-B.0__PWP.las

14004.00	90.05	180.69	7145.34	7233.63	-7233.53	90.30	40.4403329	-104.7423937	0.00
14104.00	90.05	180.69	7145.25	7333.62	-7333.53	89.10	40.4400584	-104.7423980	0.00
14204.00	90.05	180.69	7145.17	7433.61	-7433.52	87.91	40.4397840	-104.7424023	0.00
14304.00	90.05	180.69	7145.08	7533.61	-7533.51	86.71	40.4395095	-104.7424066	0.00
14404.00	90.05	180.69	7144.99	7633.60	-7633.50	85.51	40.4392350	-104.7424108	0.00
14504.00	90.05	180.69	7144.90	7733.59	-7733.50	84.32	40.4389606	-104.7424151	0.00
14604.00	90.05	180.69	7144.82	7833.58	-7833.49	83.12	40.4386861	-104.7424194	0.00
14704.00	90.05	180.69	7144.73	7933.57	-7933.48	81.93	40.4384116	-104.7424237	0.00
14804.00	90.05	180.69	7144.64	8033.56	-8033.48	80.73	40.4381371	-104.7424280	0.00
14904.00	90.05	180.69	7144.55	8133.55	-8133.47	79.53	40.4378627	-104.7424323	0.00
15004.00	90.05	180.69	7144.47	8233.54	-8233.46	78.34	40.4375882	-104.7424366	0.00
15104.00	90.05	180.69	7144.38	8333.54	-8333.45	77.14	40.4373137	-104.7424409	0.00
15204.00	90.05	180.69	7144.29	8433.53	-8433.45	75.95	40.4370393	-104.7424452	0.00
15304.00	90.05	180.69	7144.20	8533.52	-8533.44	74.75	40.4367648	-104.7424495	0.00
15404.00	90.05	180.69	7144.12	8633.51	-8633.43	73.55	40.4364903	-104.7424538	0.00
15504.00	90.05	180.69	7144.03	8733.50	-8733.42	72.36	40.4362159	-104.7424581	0.00
15604.00	90.05	180.69	7143.94	8833.49	-8833.42	71.16	40.4359414	-104.7424624	0.00
15704.00	90.05	180.69	7143.85	8933.48	-8933.41	69.97	40.4356669	-104.7424667	0.00
15804.00	90.05	180.69	7143.77	9033.48	-9033.40	68.77	40.4353925	-104.7424710	0.00
15904.00	90.05	180.69	7143.68	9133.47	-9133.40	67.57	40.4351180	-104.7424753	0.00
16004.00	90.05	180.69	7143.59	9233.46	-9233.39	66.38	40.4348435	-104.7424796	0.00
16104.00	90.05	180.69	7143.50	9333.45	-9333.38	65.18	40.4345691	-104.7424839	0.00
16204.00	90.05	180.69	7143.42	9433.44	-9433.37	63.99	40.4342946	-104.7424882	0.00
16304.00	90.05	180.69	7143.33	9533.43	-9533.37	62.79	40.4340201	-104.7424925	0.00
16404.00	90.05	180.69	7143.24	9633.42	-9633.36	61.59	40.4337456	-104.7424968	0.00
16504.00	90.05	180.69	7143.15	9733.42	-9733.35	60.40	40.4334712	-104.7425011	0.00
16604.00	90.05	180.69	7143.07	9833.41	-9833.35	59.20	40.4331967	-104.7425054	0.00
16704.00	90.05	180.69	7142.98	9933.40	-9933.34	58.01	40.4329222	-104.7425097	0.00
16804.00	90.05	180.69	7142.89	10033.39	-10033.33	56.81	40.4326478	-104.7425140	0.00
16904.00	90.05	180.69	7142.80	10133.38	-10133.32	55.61	40.4323733	-104.7425183	0.00
17004.00	90.05	180.69	7142.72	10233.37	-10233.32	54.42	40.4320988	-104.7425226	0.00
17104.00	90.05	180.69	7142.63	10333.36	-10333.31	53.22	40.4318244	-104.7425269	0.00
17204.00	90.05	180.69	7142.54	10433.36	-10433.30	52.02	40.4315499	-104.7425312	0.00
17304.00	90.05	180.69	7142.45	10533.35	-10533.30	50.83	40.4312754	-104.7425355	0.00

CHALK_15C-2-XR__REV-B.0__PWP.las

17404.00	90.05	180.69	7142.37	10633.34	-10633.29	49.63	40.4310010	-104.7425398	0.00
17504.00	90.05	180.69	7142.28	10733.33	-10733.28	48.44	40.4307265	-104.7425441	0.00
17604.00	90.05	180.69	7142.19	10833.32	-10833.27	47.24	40.4304520	-104.7425484	0.00
17704.00	90.05	180.69	7142.10	10933.31	-10933.27	46.04	40.4301775	-104.7425527	0.00
17804.00	90.05	180.69	7142.02	11033.30	-11033.26	44.85	40.4299031	-104.7425570	0.00
17904.00	90.05	180.69	7141.93	11133.29	-11133.25	43.65	40.4296286	-104.7425613	0.00
18004.00	90.05	180.69	7141.84	11233.29	-11233.25	42.46	40.4293541	-104.7425656	0.00
18104.00	90.05	180.69	7141.75	11333.28	-11333.24	41.26	40.4290797	-104.7425699	0.00
18204.00	90.05	180.69	7141.67	11433.27	-11433.23	40.06	40.4288052	-104.7425741	0.00
18304.00	90.05	180.69	7141.58	11533.26	-11533.22	38.87	40.4285307	-104.7425784	0.00
18404.00	90.05	180.69	7141.49	11633.25	-11633.22	37.67	40.4282563	-104.7425827	0.00
18504.00	90.05	180.69	7141.40	11733.24	-11733.21	36.48	40.4279818	-104.7425870	0.00
18604.00	90.05	180.69	7141.32	11833.23	-11833.20	35.28	40.4277073	-104.7425913	0.00
18704.00	90.05	180.69	7141.23	11933.23	-11933.19	34.08	40.4274329	-104.7425956	0.00
18804.00	90.05	180.69	7141.14	12033.22	-12033.19	32.89	40.4271584	-104.7425999	0.00
18904.00	90.05	180.69	7141.05	12133.21	-12133.18	31.69	40.4268839	-104.7426042	0.00
19004.00	90.05	180.69	7140.97	12233.20	-12233.17	30.50	40.4266094	-104.7426085	0.00
19104.00	90.05	180.69	7140.88	12333.19	-12333.17	29.30	40.4263350	-104.7426128	0.00
19204.00	90.05	180.69	7140.79	12433.18	-12433.16	28.10	40.4260605	-104.7426171	0.00
19304.00	90.05	180.69	7140.70	12533.17	-12533.15	26.91	40.4257860	-104.7426214	0.00
19404.00	90.05	180.69	7140.62	12633.17	-12633.14	25.71	40.4255116	-104.7426257	0.00
19504.00	90.05	180.69	7140.53	12733.16	-12733.14	24.52	40.4252371	-104.7426300	0.00
19604.00	90.05	180.69	7140.44	12833.15	-12833.13	23.32	40.4249626	-104.7426343	0.00
19704.00	90.05	180.69	7140.35	12933.14	-12933.12	22.12	40.4246882	-104.7426386	0.00
19804.00	90.05	180.69	7140.27	13033.13	-13033.12	20.93	40.4244137	-104.7426429	0.00
19904.00	90.05	180.69	7140.18	13133.12	-13133.11	19.73	40.4241392	-104.7426472	0.00
20004.00	90.05	180.69	7140.09	13233.11	-13233.10	18.54	40.4238648	-104.7426515	0.00
20104.00	90.05	180.69	7140.00	13333.11	-13333.09	17.34	40.4235903	-104.7426558	0.00
20109.20	90.05	180.69	7140.00	13338.31	-13338.30	17.28	40.4235760	-104.7426560	0.00
20133.83	89.99	181.18	7139.99	13362.93	-13362.92	16.88	40.4235084	-104.7426574	2.00
20204.00	89.99	181.18	7140.00	13433.08	-13433.08	15.44	40.4233158	-104.7426626	0.00
20209.41	89.99	181.18	7140.00	13438.49	-13438.48	15.33	40.4233010	-104.7426630	0.00



Planned Wellpath Report

CHALK 15C-2-XR (REV-B.0) PWP

Page 1 of 11



REFERENCE WELLPATH IDENTIFICATION

Operator	SRC ENERGY	Slot	SLOT#30 CHALK 15C-2-XR (2330'FNL & 2191'FEL, SEC.26)
Area	COLORADO	Well	CHALK 15C-2-XR
Field	WELD COUNTY (NAD83,TRUE NORTH)	Wellbore	CHALK 15C-2-XR PWB
Facility	SEC.26-T06N-R66W		

REPORT SETUP INFORMATION

Projection System	NAD83 / Lambert Colorado SP, Northern Zone (501), US feet	Software System	WellArchitect® 5.0
North Reference	True	User	Doddanna
Scale	0.999964	Report Generated	8/8/2018 at 9:40:57 AM
Convergence at slot	0.49° East	Database/Source file	WellArchitectDB2/CHALK_15C-2-XR_REV-B.0_PWP.xml

WELLPATH LOCATION

	Local coordinates		Grid coordinates		Geographic coordinates	
	North[ft]	East[ft]	Easting[US ft]	Northing[US ft]	Latitude	Longitude
Slot Location	-617.51	-592.72	3210721.05	1411386.64	40°27'36.677"N	104°44'33.785"W
Facility Reference Pt			3211308.44	1412009.18	40°27'42.779"N	104°44'26.117"W
Field Reference Pt			3171284.48	1426358.81	40°30'07.643"N	104°53'02.634"W

WELLPATH DATUM

Calculation method	Minimum curvature	PROPETRO 12 (4') (RKB) to Facility Vertical Datum	4701.00ft
Horizontal Reference Pt	Slot	PROPETRO 12 (4') (RKB) to Mean Sea Level	4701.00ft
Vertical Reference Pt	PROPETRO 12 (4') (RKB)	PROPETRO 12 (4') (RKB) to Mud Line at Slot (SLOT#30 CHALK 15C-2-XR (2330'FNL & 2191'FEL, SEC.26))	4701.00ft
MD Reference Pt	PROPETRO 12 (4') (RKB)	Section Origin	N 0.00, E 0.00 ft
Field Vertical Reference	Mean Sea Level	Section Azimuth	179.93°



Planned Wellpath Report

CHALK 15C-2-XR (REV-B.0) PWP

Page 2 of 11



REFERENCE WELLPATH IDENTIFICATION			
Operator	SRC ENERGY	Slot	SLOT#30 CHALK 15C-2-XR (2330'FNL & 2191'FEL, SEC.26)
Area	COLORADO	Well	CHALK 15C-2-XR
Field	WELD COUNTY (NAD83,TRUE NORTH)	Wellbore	CHALK 15C-2-XR PWB
Facility	SEC.26-T06N-R66W		

WELLPATH DATA (217 stations) † = interpolated/extrapolated station

MD [ft]	Inclination [°]	Azimuth [°]	TVD [ft]	Vert Sect [ft]	North [ft]	East [ft]	DLS [°/100ft]	Comments
0.00†	0.000	112.526	0.00	0.00	0.00	0.00	0.00	
4.00	0.000	112.526	4.00	0.00	0.00	0.00	0.00	Tie On
104.00†	0.000	112.526	104.00	0.00	0.00	0.00	0.00	
204.00†	0.000	112.526	204.00	0.00	0.00	0.00	0.00	
300.00	0.000	112.526	300.00	0.00	0.00	0.00	0.00	End of Tangent
304.00†	0.080	112.526	304.00	0.00	0.00	0.00	2.00	
404.00†	2.080	112.526	403.98	0.73	-0.72	1.74	2.00	
450.39	3.008	112.526	450.32	1.52	-1.51	3.65	2.00	End of Build
504.00†	3.008	112.526	503.86	2.60	-2.59	6.24	0.00	
604.00†	3.008	112.526	603.72	4.61	-4.60	11.09	0.00	
704.00†	3.008	112.526	703.58	6.63	-6.61	15.94	0.00	
804.00†	3.008	112.526	803.44	8.64	-8.62	20.78	0.00	
904.00†	3.008	112.526	903.31	10.66	-10.63	25.63	0.00	
1004.00†	3.008	112.526	1003.17	12.68	-12.64	30.48	0.00	
1104.00†	3.008	112.526	1103.03	14.69	-14.65	35.32	0.00	
1204.00†	3.008	112.526	1202.89	16.71	-16.66	40.17	0.00	
1304.00†	3.008	112.526	1302.76	18.72	-18.67	45.02	0.00	
1404.00†	3.008	112.526	1402.62	20.74	-20.68	49.86	0.00	
1504.00†	3.008	112.526	1502.48	22.75	-22.69	54.71	0.00	
1604.00†	3.008	112.526	1602.34	24.77	-24.70	59.56	0.00	
1704.00†	3.008	112.526	1702.20	26.78	-26.71	64.40	0.00	
1804.00†	3.008	112.526	1802.07	28.80	-28.72	69.25	0.00	
1904.00†	3.008	112.526	1901.93	30.82	-30.73	74.10	0.00	
2004.00†	3.008	112.526	2001.79	32.83	-32.74	78.94	0.00	
2104.00†	3.008	112.526	2101.65	34.85	-34.75	83.79	0.00	
2204.00†	3.008	112.526	2201.52	36.86	-36.76	88.64	0.00	
2304.00†	3.008	112.526	2301.38	38.88	-38.77	93.49	0.00	
2404.00†	3.008	112.526	2401.24	40.89	-40.78	98.33	0.00	
2504.00†	3.008	112.526	2501.10	42.91	-42.79	103.18	0.00	
2604.00†	3.008	112.526	2600.96	44.93	-44.80	108.03	0.00	



Planned Wellpath Report

CHALK 15C-2-XR (REV-B.0) PWP

Page 3 of 11



REFERENCE WELLPATH IDENTIFICATION			
Operator	SRC ENERGY	Slot	SLOT#30 CHALK 15C-2-XR (2330'FNL & 2191'FEL, SEC.26)
Area	COLORADO	Well	CHALK 15C-2-XR
Field	WELD COUNTY (NAD83,TRUE NORTH)	Wellbore	CHALK 15C-2-XR PWB
Facility	SEC.26-T06N-R66W		

WELLPATH DATA (217 stations) † = interpolated/extrapolated station								
MD [ft]	Inclination [°]	Azimuth [°]	TVD [ft]	Vert Sect [ft]	North [ft]	East [ft]	DLS [°/100ft]	Comments
2704.00†	3.008	112.526	2700.83	46.94	-46.81	112.87	0.00	
2804.00†	3.008	112.526	2800.69	48.96	-48.82	117.72	0.00	
2904.00†	3.008	112.526	2900.55	50.97	-50.83	122.57	0.00	
3004.00†	3.008	112.526	3000.41	52.99	-52.84	127.41	0.00	
3104.00†	3.008	112.526	3100.28	55.00	-54.85	132.26	0.00	
3204.00†	3.008	112.526	3200.14	57.02	-56.86	137.11	0.00	
3304.00†	3.008	112.526	3300.00	59.04	-58.87	141.95	0.00	
3404.00†	3.008	112.526	3399.86	61.05	-60.88	146.80	0.00	
3504.00†	3.008	112.526	3499.72	63.07	-62.89	151.65	0.00	
3604.00†	3.008	112.526	3599.59	65.08	-64.90	156.49	0.00	
3704.00†	3.008	112.526	3699.45	67.10	-66.91	161.34	0.00	
3804.00†	3.008	112.526	3799.31	69.11	-68.92	166.19	0.00	
3904.00†	3.008	112.526	3899.17	71.13	-70.93	171.03	0.00	
4004.00†	3.008	112.526	3999.04	73.15	-72.94	175.88	0.00	
4104.00†	3.008	112.526	4098.90	75.16	-74.95	180.73	0.00	
4204.00†	3.008	112.526	4198.76	77.18	-76.96	185.57	0.00	
4304.00†	3.008	112.526	4298.62	79.19	-78.97	190.42	0.00	
4404.00†	3.008	112.526	4398.48	81.21	-80.99	195.27	0.00	
4504.00†	3.008	112.526	4498.35	83.22	-83.00	200.11	0.00	
4604.00†	3.008	112.526	4598.21	85.24	-85.01	204.96	0.00	
4704.00†	3.008	112.526	4698.07	87.25	-87.02	209.81	0.00	
4804.00†	3.008	112.526	4797.93	89.27	-89.03	214.65	0.00	
4904.00†	3.008	112.526	4897.80	91.29	-91.04	219.50	0.00	
5004.00†	3.008	112.526	4997.66	93.30	-93.05	224.35	0.00	
5104.00†	3.008	112.526	5097.52	95.32	-95.06	229.19	0.00	
5204.00†	3.008	112.526	5197.38	97.33	-97.07	234.04	0.00	
5304.00†	3.008	112.526	5297.24	99.35	-99.08	238.89	0.00	
5404.00†	3.008	112.526	5397.11	101.36	-101.09	243.73	0.00	
5504.00†	3.008	112.526	5496.97	103.38	-103.10	248.58	0.00	
5604.00†	3.008	112.526	5596.83	105.40	-105.11	253.43	0.00	



Planned Wellpath Report

CHALK 15C-2-XR (REV-B.0) PWP

Page 4 of 11



REFERENCE WELLPATH IDENTIFICATION			
Operator	SRC ENERGY	Slot	SLOT#30 CHALK 15C-2-XR (2330'FNL & 2191'FEL, SEC.26)
Area	COLORADO	Well	CHALK 15C-2-XR
Field	WELD COUNTY (NAD83,TRUE NORTH)	Wellbore	CHALK 15C-2-XR PWB
Facility	SEC.26-T06N-R66W		

WELLPATH DATA (217 stations) † = interpolated/extrapolated station								
MD [ft]	Inclination [°]	Azimuth [°]	TVD [ft]	Vert Sect [ft]	North [ft]	East [ft]	DLS [°/100ft]	Comments
5704.00†	3.008	112.526	5696.69	107.41	-107.12	258.27	0.00	
5804.00†	3.008	112.526	5796.56	109.43	-109.13	263.12	0.00	
5904.00†	3.008	112.526	5896.42	111.44	-111.14	267.97	0.00	
6004.00†	3.008	112.526	5996.28	113.46	-113.15	272.81	0.00	
6104.00†	3.008	112.526	6096.14	115.47	-115.16	277.66	0.00	
6204.00†	3.008	112.526	6196.01	117.49	-117.17	282.51	0.00	
6304.00†	3.008	112.526	6295.87	119.51	-119.18	287.35	0.00	
6404.00†	3.008	112.526	6395.73	121.52	-121.19	292.20	0.00	
6504.00†	3.008	112.526	6495.59	123.54	-123.20	297.05	0.00	
6535.65	3.008	112.526	6527.20	124.17	-123.83	298.58	0.00	End of Tangent
6604.00†	7.760	160.277	6595.25	129.21	-128.87	301.80	9.00	
6704.00†	16.472	171.811	6692.94	149.65	-149.30	306.11	9.00	
6804.00†	25.383	175.423	6786.26	185.12	-184.77	309.84	9.00	
6904.00†	34.339	177.237	6872.89	234.77	-234.41	312.92	9.00	
7004.00†	43.311	178.370	6950.72	297.35	-296.99	315.26	9.00	
7104.00†	52.291	179.179	7017.83	371.34	-370.98	316.80	9.00	
7204.00†	61.275	179.811	7072.55	454.91	-454.55	317.52	9.00	
7304.00†	70.262	180.342	7113.55	546.01	-545.65	317.38	9.00	
7404.00†	79.251	180.817	7139.82	642.39	-642.03	316.40	9.00	
7504.00†	88.240	181.263	7150.70	741.67	-741.31	314.59	9.00	
7524.14	90.050	181.352	7151.00†	761.80	-761.44	314.13	9.00	End of 3D Arc
7604.00†	90.050	181.352	7150.93	841.64	-841.28	312.25	0.00	
7704.00†	90.050	181.352	7150.84	941.61	-941.25	309.89	0.00	
7804.00†	90.050	181.352	7150.76	1041.58	-1041.23	307.53	0.00	
7904.00†	90.050	181.352	7150.67	1141.54	-1141.20	305.17	0.00	
8004.00†	90.050	181.352	7150.58	1241.51	-1241.17	302.81	0.00	
8104.00†	90.050	181.352	7150.49	1341.48	-1341.14	300.45	0.00	
8204.00†	90.050	181.352	7150.41	1441.45	-1441.11	298.09	0.00	
8304.00†	90.050	181.352	7150.32	1541.42	-1541.09	295.73	0.00	
8404.00†	90.050	181.352	7150.23	1641.39	-1641.06	293.37	0.00	



Planned Wellpath Report

CHALK 15C-2-XR (REV-B.0) PWP

Page 5 of 11



REFERENCE WELLPATH IDENTIFICATION			
Operator	SRC ENERGY	Slot	SLOT#30 CHALK 15C-2-XR (2330'FNL & 2191'FEL, SEC.26)
Area	COLORADO	Well	CHALK 15C-2-XR
Field	WELD COUNTY (NAD83,TRUE NORTH)	Wellbore	CHALK 15C-2-XR PWB
Facility	SEC.26-T06N-R66W		

WELLPATH DATA (217 stations) † = interpolated/extrapolated station								
MD [ft]	Inclination [°]	Azimuth [°]	TVD [ft]	Vert Sect [ft]	North [ft]	East [ft]	DLS [°/100ft]	Comments
8504.00†	90.050	181.352	7150.14	1741.36	-1741.03	291.01	0.00	
8604.00†	90.050	181.352	7150.06	1841.33	-1841.00	288.65	0.00	
8704.00†	90.050	181.352	7149.97	1941.30	-1940.97	286.29	0.00	
8804.00†	90.050	181.352	7149.88	2041.27	-2040.95	283.94	0.00	
8904.00†	90.050	181.352	7149.80	2141.24	-2140.92	281.58	0.00	
9004.00†	90.050	181.352	7149.71	2241.21	-2240.89	279.22	0.00	
9104.00†	90.050	181.352	7149.62	2341.18	-2340.86	276.86	0.00	
9204.00†	90.050	181.352	7149.53	2441.15	-2440.83	274.50	0.00	
9304.00†	90.050	181.352	7149.45	2541.12	-2540.81	272.14	0.00	
9404.00†	90.050	181.352	7149.36	2641.09	-2640.78	269.78	0.00	
9504.00†	90.050	181.352	7149.27	2741.05	-2740.75	267.42	0.00	
9604.00†	90.050	181.352	7149.18	2841.02	-2840.72	265.06	0.00	
9704.00†	90.050	181.352	7149.10	2940.99	-2940.70	262.70	0.00	
9804.00†	90.050	181.352	7149.01	3040.96	-3040.67	260.34	0.00	
9904.00†	90.050	181.352	7148.92	3140.93	-3140.64	257.98	0.00	
10004.00†	90.050	181.352	7148.84	3240.90	-3240.61	255.62	0.00	
10104.00†	90.050	181.352	7148.75	3340.87	-3340.58	253.26	0.00	
10204.00†	90.050	181.352	7148.66	3440.84	-3440.56	250.90	0.00	
10304.00†	90.050	181.352	7148.57	3540.81	-3540.53	248.54	0.00	
10404.00†	90.050	181.352	7148.49	3640.78	-3640.50	246.18	0.00	
10504.00†	90.050	181.352	7148.40	3740.75	-3740.47	243.82	0.00	
10604.00†	90.050	181.352	7148.31	3840.72	-3840.44	241.46	0.00	
10704.00†	90.050	181.352	7148.23	3940.69	-3940.42	239.11	0.00	
10804.00†	90.050	181.352	7148.14	4040.66	-4040.39	236.75	0.00	
10904.00†	90.050	181.352	7148.05	4140.63	-4140.36	234.39	0.00	
11004.00†	90.050	181.352	7147.96	4240.59	-4240.33	232.03	0.00	
11104.00†	90.050	181.352	7147.88	4340.56	-4340.31	229.67	0.00	
11204.00†	90.050	181.352	7147.79	4440.53	-4440.28	227.31	0.00	
11304.00†	90.050	181.352	7147.70	4540.50	-4540.25	224.95	0.00	
11404.00†	90.050	181.352	7147.61	4640.47	-4640.22	222.59	0.00	



Planned Wellpath Report

CHALK 15C-2-XR (REV-B.0) PWP

Page 6 of 11



REFERENCE WELLPATH IDENTIFICATION			
Operator	SRC ENERGY	Slot	SLOT#30 CHALK 15C-2-XR (2330'FNL & 2191'FEL, SEC.26)
Area	COLORADO	Well	CHALK 15C-2-XR
Field	WELD COUNTY (NAD83,TRUE NORTH)	Wellbore	CHALK 15C-2-XR PWB
Facility	SEC.26-T06N-R66W		

WELLPATH DATA (217 stations) † = interpolated/extrapolated station								
MD [ft]	Inclination [°]	Azimuth [°]	TVD [ft]	Vert Sect [ft]	North [ft]	East [ft]	DLS [°/100ft]	Comments
11424.14	90.050	181.352	7147.60	4660.60	-4660.35	222.11	0.00	End of Tangent
11504.00†	90.050	179.755	7147.53	4740.46	-4740.21	221.34	2.00	
11541.74	90.050	179.000	7147.49	4778.19	-4777.94	221.75	2.00	End of 3D Arc
11604.00†	90.050	179.000	7147.44	4840.45	-4840.20	222.84	0.00	
11641.74	90.050	179.000	7147.41	4878.18	-4877.93	223.50	0.00	End of Tangent
11704.00†	90.050	180.245	7147.35	4940.44	-4940.19	223.91	2.00	
11804.00†	90.050	182.245	7147.26	5040.41	-5040.16	221.73	2.00	
11904.00†	90.050	184.245	7147.18	5140.24	-5139.99	216.07	2.00	
12004.00†	90.050	186.245	7147.09	5239.80	-5239.57	206.93	2.00	
12041.74	90.050	187.000	7147.06	5277.28	-5277.05	202.58	2.00	End of 3D Arc
12104.00†	90.050	187.000	7147.00	5339.07	-5338.85	194.99	0.00	
12204.00†	90.050	187.000	7146.92	5438.31	-5438.11	182.81	0.00	
12304.00†	90.050	187.000	7146.83	5537.56	-5537.36	170.62	0.00	
12404.00†	90.050	187.000	7146.74	5636.80	-5636.62	158.43	0.00	
12504.00†	90.050	187.000	7146.65	5736.04	-5735.87	146.24	0.00	
12604.00†	90.050	187.000	7146.57	5835.28	-5835.13	134.06	0.00	
12691.74	90.050	187.000	7146.49	5922.35	-5922.21	123.37	0.00	End of Tangent
12704.00†	90.050	186.755	7146.48	5934.52	-5934.39	121.90	2.00	
12804.00†	90.050	184.755	7146.39	6034.00	-6033.88	111.87	2.00	
12904.00†	90.050	182.755	7146.30	6133.77	-6133.66	105.32	2.00	
13004.00†	90.050	180.755	7146.22	6233.72	-6233.60	102.26	2.00	
13007.47	90.050	180.685	7146.21	6237.19	-6237.08	102.22	2.00	End of 3D Arc
13104.00†	90.050	180.685	7146.13	6333.71	-6333.60	101.06	0.00	
13204.00†	90.050	180.685	7146.04	6433.70	-6433.59	99.87	0.00	
13304.00†	90.050	180.685	7145.95	6533.69	-6533.58	98.67	0.00	
13404.00†	90.050	180.685	7145.87	6633.68	-6633.58	97.47	0.00	
13504.00†	90.050	180.685	7145.78	6733.67	-6733.57	96.28	0.00	
13604.00†	90.050	180.685	7145.69	6833.67	-6833.56	95.08	0.00	
13704.00†	90.050	180.685	7145.60	6933.66	-6933.55	93.89	0.00	
13804.00†	90.050	180.685	7145.52	7033.65	-7033.55	92.69	0.00	



Planned Wellpath Report

CHALK 15C-2-XR (REV-B.0) PWP

Page 7 of 11



REFERENCE WELLPATH IDENTIFICATION			
Operator	SRC ENERGY	Slot	SLOT#30 CHALK 15C-2-XR (2330'FNL & 2191'FEL, SEC.26)
Area	COLORADO	Well	CHALK 15C-2-XR
Field	WELD COUNTY (NAD83,TRUE NORTH)	Wellbore	CHALK 15C-2-XR PWB
Facility	SEC.26-T06N-R66W		

WELLPATH DATA (217 stations) † = interpolated/extrapolated station								
MD [ft]	Inclination [°]	Azimuth [°]	TVD [ft]	Vert Sect [ft]	North [ft]	East [ft]	DLS [°/100ft]	Comments
13904.00†	90.050	180.685	7145.43	7133.64	-7133.54	91.49	0.00	
14004.00†	90.050	180.685	7145.34	7233.63	-7233.53	90.30	0.00	
14104.00†	90.050	180.685	7145.25	7333.62	-7333.53	89.10	0.00	
14204.00†	90.050	180.685	7145.17	7433.61	-7433.52	87.91	0.00	
14304.00†	90.050	180.685	7145.08	7533.61	-7533.51	86.71	0.00	
14404.00†	90.050	180.685	7144.99	7633.60	-7633.50	85.51	0.00	
14504.00†	90.050	180.685	7144.90	7733.59	-7733.50	84.32	0.00	
14604.00†	90.050	180.685	7144.82	7833.58	-7833.49	83.12	0.00	
14704.00†	90.050	180.685	7144.73	7933.57	-7933.48	81.93	0.00	
14804.00†	90.050	180.685	7144.64	8033.56	-8033.48	80.73	0.00	
14904.00†	90.050	180.685	7144.55	8133.55	-8133.47	79.53	0.00	
15004.00†	90.050	180.685	7144.47	8233.54	-8233.46	78.34	0.00	
15104.00†	90.050	180.685	7144.38	8333.54	-8333.45	77.14	0.00	
15204.00†	90.050	180.685	7144.29	8433.53	-8433.45	75.95	0.00	
15304.00†	90.050	180.685	7144.20	8533.52	-8533.44	74.75	0.00	
15404.00†	90.050	180.685	7144.12	8633.51	-8633.43	73.55	0.00	
15504.00†	90.050	180.685	7144.03	8733.50	-8733.42	72.36	0.00	
15604.00†	90.050	180.685	7143.94	8833.49	-8833.42	71.16	0.00	
15704.00†	90.050	180.685	7143.85	8933.48	-8933.41	69.97	0.00	
15804.00†	90.050	180.685	7143.77	9033.48	-9033.40	68.77	0.00	
15904.00†	90.050	180.685	7143.68	9133.47	-9133.40	67.57	0.00	
16004.00†	90.050	180.685	7143.59	9233.46	-9233.39	66.38	0.00	
16104.00†	90.050	180.685	7143.50	9333.45	-9333.38	65.18	0.00	
16204.00†	90.050	180.685	7143.42	9433.44	-9433.37	63.99	0.00	
16304.00†	90.050	180.685	7143.33	9533.43	-9533.37	62.79	0.00	
16404.00†	90.050	180.685	7143.24	9633.42	-9633.36	61.59	0.00	
16504.00†	90.050	180.685	7143.15	9733.42	-9733.35	60.40	0.00	
16604.00†	90.050	180.685	7143.07	9833.41	-9833.35	59.20	0.00	
16704.00†	90.050	180.685	7142.98	9933.40	-9933.34	58.01	0.00	
16804.00†	90.050	180.685	7142.89	10033.39	-10033.33	56.81	0.00	



Planned Wellpath Report

CHALK 15C-2-XR (REV-B.0) PWP

Page 8 of 11



REFERENCE WELLPATH IDENTIFICATION			
Operator	SRC ENERGY	Slot	SLOT#30 CHALK 15C-2-XR (2330'FNL & 2191'FEL, SEC.26)
Area	COLORADO	Well	CHALK 15C-2-XR
Field	WELD COUNTY (NAD83,TRUE NORTH)	Wellbore	CHALK 15C-2-XR PWB
Facility	SEC.26-T06N-R66W		

WELLPATH DATA (217 stations) † = interpolated/extrapolated station

MD [ft]	Inclination [°]	Azimuth [°]	TVD [ft]	Vert Sect [ft]	North [ft]	East [ft]	DLS [°/100ft]	Comments
16904.00†	90.050	180.685	7142.80	10133.38	-10133.32	55.61	0.00	
17004.00†	90.050	180.685	7142.72	10233.37	-10233.32	54.42	0.00	
17104.00†	90.050	180.685	7142.63	10333.36	-10333.31	53.22	0.00	
17204.00†	90.050	180.685	7142.54	10433.36	-10433.30	52.02	0.00	
17304.00†	90.050	180.685	7142.45	10533.35	-10533.30	50.83	0.00	
17404.00†	90.050	180.685	7142.37	10633.34	-10633.29	49.63	0.00	
17504.00†	90.050	180.685	7142.28	10733.33	-10733.28	48.44	0.00	
17604.00†	90.050	180.685	7142.19	10833.32	-10833.27	47.24	0.00	
17704.00†	90.050	180.685	7142.10	10933.31	-10933.27	46.04	0.00	
17804.00†	90.050	180.685	7142.02	11033.30	-11033.26	44.85	0.00	
17904.00†	90.050	180.685	7141.93	11133.29	-11133.25	43.65	0.00	
18004.00†	90.050	180.685	7141.84	11233.29	-11233.25	42.46	0.00	
18104.00†	90.050	180.685	7141.75	11333.28	-11333.24	41.26	0.00	
18204.00†	90.050	180.685	7141.67	11433.27	-11433.23	40.06	0.00	
18304.00†	90.050	180.685	7141.58	11533.26	-11533.22	38.87	0.00	
18404.00†	90.050	180.685	7141.49	11633.25	-11633.22	37.67	0.00	
18504.00†	90.050	180.685	7141.40	11733.24	-11733.21	36.48	0.00	
18604.00†	90.050	180.685	7141.32	11833.23	-11833.20	35.28	0.00	
18704.00†	90.050	180.685	7141.23	11933.23	-11933.19	34.08	0.00	
18804.00†	90.050	180.685	7141.14	12033.22	-12033.19	32.89	0.00	
18904.00†	90.050	180.685	7141.05	12133.21	-12133.18	31.69	0.00	
19004.00†	90.050	180.685	7140.97	12233.20	-12233.17	30.50	0.00	
19104.00†	90.050	180.685	7140.88	12333.19	-12333.17	29.30	0.00	
19204.00†	90.050	180.685	7140.79	12433.18	-12433.16	28.10	0.00	
19304.00†	90.050	180.685	7140.70	12533.17	-12533.15	26.91	0.00	
19404.00†	90.050	180.685	7140.62	12633.17	-12633.14	25.71	0.00	
19504.00†	90.050	180.685	7140.53	12733.16	-12733.14	24.52	0.00	
19604.00†	90.050	180.685	7140.44	12833.15	-12833.13	23.32	0.00	
19704.00†	90.050	180.685	7140.35	12933.14	-12933.12	22.12	0.00	
19804.00†	90.050	180.685	7140.27	13033.13	-13033.12	20.93	0.00	



Planned Wellpath Report

CHALK 15C-2-XR (REV-B.0) PWP

Page 9 of 11



REFERENCE WELLPATH IDENTIFICATION			
Operator	SRC ENERGY	Slot	SLOT#30 CHALK 15C-2-XR (2330'FNL & 2191'FEL, SEC.26)
Area	COLORADO	Well	CHALK 15C-2-XR
Field	WELD COUNTY (NAD83,TRUE NORTH)	Wellbore	CHALK 15C-2-XR PWB
Facility	SEC.26-T06N-R66W		

WELLPATH DATA (217 stations) † = interpolated/extrapolated station								
MD [ft]	Inclination [°]	Azimuth [°]	TVD [ft]	Vert Sect [ft]	North [ft]	East [ft]	DLS [°/100ft]	Comments
19904.00†	90.050	180.685	7140.18	13133.12	-13133.11	19.73	0.00	
20004.00†	90.050	180.685	7140.09	13233.11	-13233.10	18.54	0.00	
20104.00†	90.050	180.685	7140.00	13333.11	-13333.09	17.34	0.00	
20109.20	90.050	180.685	7140.00 ²	13338.31	-13338.30	17.28	0.00	End of Tangent
20133.83	89.993	181.175	7139.99	13362.93	-13362.92	16.88	2.00	End of 3D Arc
20204.00†	89.993	181.175	7140.00	13433.08	-13433.08	15.44	0.00	
20209.41	89.993	181.175	7140.00 ³	13438.49	-13438.48	15.33	0.00	End of Tangent

HOLE & CASING SECTIONS - Ref Wellbore: CHALK 15C-2-XR PWB Ref Wellpath: CHALK 15C-2-XR (REV-B.0) PWP									
String/Diameter	Start MD [ft]	End MD [ft]	Interval [ft]	Start TVD [ft]	End TVD [ft]	Start N/S [ft]	Start E/W [ft]	End N/S [ft]	End E/W [ft]
13.5in Open Hole	4.00	1750.00	1746.00	4.00	1748.14	0.00	0.00	-27.64	66.63
9.625in Casing Surface	4.00	1750.00	1746.00	4.00	1748.14	0.00	0.00	-27.64	66.63
8.5in Open Hole	1750.00	20209.41	18459.41	1748.14	7140.00	-27.64	66.63	-13438.48	15.33



Planned Wellpath Report

CHALK 15C-2-XR (REV-B.0) PWP

Page 10 of 11



REFERENCE WELLPATH IDENTIFICATION			
Operator	SRC ENERGY	Slot	SLOT#30 CHALK 15C-2-XR (2330'FNL & 2191'FEL, SEC.26)
Area	COLORADO	Well	CHALK 15C-2-XR
Field	WELD COUNTY (NAD83,TRUE NORTH)	Wellbore	CHALK 15C-2-XR PWB
Facility	SEC.26-T06N-R66W		

TARGETS									
Name	MD [ft]	TVD [ft]	North [ft]	East [ft]	Grid East [US ft]	Grid North [US ft]	Latitude	Longitude	Shape
EAST HALF OF SEC.02-T05N-R66W		-22.00	617.52	592.71	3211308.44	1412009.18	40°27'42.779"N	104°44'26.117"W	polygon
EAST HALF OF SEC.26-T06N-R66W		-22.00	617.52	592.71	3211308.44	1412009.18	40°27'42.779"N	104°44'26.117"W	polygon
EAST HALF OF SEC.35-T06N-R66W		-22.00	617.52	592.71	3211308.44	1412009.18	40°27'42.779"N	104°44'26.117"W	polygon
SEC.25-T06N-R66W		-22.00	617.52	592.71	3211308.44	1412009.18	40°27'42.779"N	104°44'26.117"W	polygon
SEC.30-T06N-R65W		-22.00	617.52	592.71	3211308.44	1412009.18	40°27'42.779"N	104°44'26.117"W	polygon
SOUTH HALF OF SEC.19-T06N-R65W		-22.00	617.52	592.71	3211308.44	1412009.18	40°27'42.779"N	104°44'26.117"W	polygon
SOUTH HALF OF SEC.24-T06N-R66W		-22.00	617.52	592.71	3211308.44	1412009.18	40°27'42.779"N	104°44'26.117"W	polygon
CHALK 15C-2-XR BHL ON PLAT (460'FSL & 2083'FEL, SEC.02)		7140.00	-13338.30	17.28	3210852.23	1398049.49	40°25'24.874"N	104°44'33.562"W	circle
3) CHALK 15C-2-XR BHL ON PLAT REV-2 (361'FSL & 2084'FEL, SEC.02)	20209.41	7140.00	-13438.48	15.33	3210851.14	1397949.30	40°25'23.884"N	104°44'33.587"W	circle
2) CHALK 15C-2-XR BPZ ON PLAT (460'FSL & 2083'FEL, SEC.02)	20109.20	7140.00	-13338.30	17.28	3210852.23	1398049.49	40°25'24.874"N	104°44'33.562"W	circle
CHALK 15C-2-XR TOP OF PROD ON PLAT (2167'FSL & 1921'FEL, SEC.26)		7151.00	-761.44	279.13	3211006.66	1410627.64	40°27'29.153"N	104°44'30.174"W	point
1) CHALK 15C-2-XR TOP OF PROD REV-2 (2167'FSL & 1886'FEL, SEC.26)	7524.14	7151.00	-761.44	314.13	3211041.66	1410627.94	40°27'29.153"N	104°44'29.721"W	circle



Planned Wellpath Report

CHALK 15C-2-XR (REV-B.0) PWP

Page 11 of 11



REFERENCE WELLPATH IDENTIFICATION			
Operator	SRC ENERGY	Slot	SLOT#30 CHALK 15C-2-XR (2330'FNL & 2191'FEL, SEC.26)
Area	COLORADO	Well	CHALK 15C-2-XR
Field	WELD COUNTY (NAD83,TRUE NORTH)	Wellbore	CHALK 15C-2-XR PWB
Facility	SEC.26-T06N-R66W		

SURVEY PROGRAM - Ref Wellbore: CHALK 15C-2-XR PWB Ref Wellpath: CHALK 15C-2-XR (REV-B.0) PWP				
Start MD [ft]	End MD [ft]	Positional Uncertainty Model	Log Name/Comment	Wellbore
4.00	1750.00	BHI NaviTrak (Rotating+Axial Corr)		CHALK 15C-2-XR PWB
1750.00	20209.41	BHI AutoTrak Curve (MagCAD+IFR1, Short spacing)		CHALK 15C-2-XR PWB