

Location:	COLORADO	Slot:	SLOT#36 CHALK 9C-35-M (2331'FNL & 2071'FEL, SEC.26)
Field:	WELD COUNTY (NAD83,TRUE NORTH)	Well:	CHALK 9C-35-M
Facility:	SEC.26-T06N-R66W	Wellbore:	CHALK 9C-35-M PWB

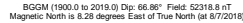
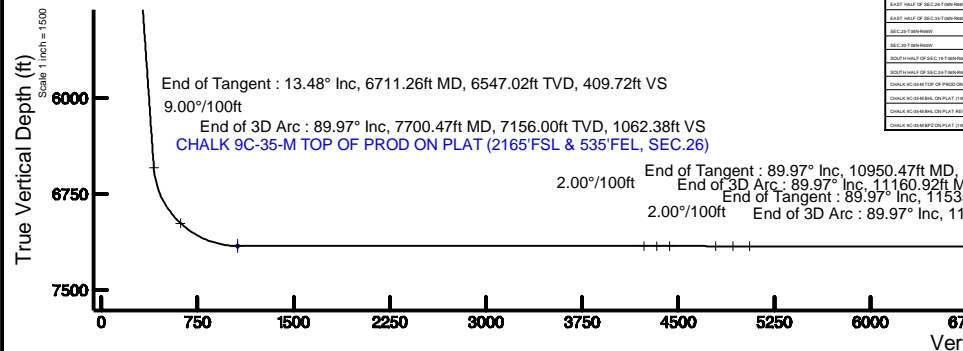
Plot reference wellpath is CHALK 9C-35-M (REV-B.0) PWP	Grid System: NAD83 / Lambert Colorado SP, Northern Zone (501), US feet
True vertical depths are referenced to PROPETRO 12 (4) (RKB)	* = Wellpath was transformed from a different geodetic datum
Measured depths are referenced to PROPETRO 12 (4) (RKB)	North Reference: True north
PROPETRO 12 (4) (RKB) to Mean Sea Level: 4700 feet	Scale: True distance
Mean Sea Level to Mud line (At Slot: SLOTH36 CHALK 9C-35-M (2331FNL & 2071FEL SEC.26)): 0 feet	Depths are in feet
Coordinates are in feet referenced to Slot	Created by: doddanna on 2018-08-08
	Database: WellArchitectDB2

Facility Name				Grid East (US ft)	Grid North (US ft)	Latitude	Longitude
SEC.26-T06N-R66W				321308.441	1412009.181	40°27'42.779"N	104°44'26.117"W
Spot	Local N (ft)	Local E (ft)	Grid East (US ft)	Grid North (US ft)	Latitude	Longitude	
SLOT#36 CHALK 9C-35-M (2331FNL & 2071FEL, SEC.26)	-618.62	-472.76	3210841.018	1411386.555	40°27'36.666"N	104°44'32.233"W	
PROPTETO 12 (d) (RKB) to Mud line (At Slot: SLOT#36 CHALK 9C-35-M (2331FNL & 2071FEL, SEC.26))						4700ft	
Mean Sea Level to Mud line (At Slot: SLOT#36 CHALK 9C-35-M (2331FNL & 2071FEL, SEC.26))						0ft	
PROPTETO 12 (d) (RKB) to Mean Sea Level						4700ft	

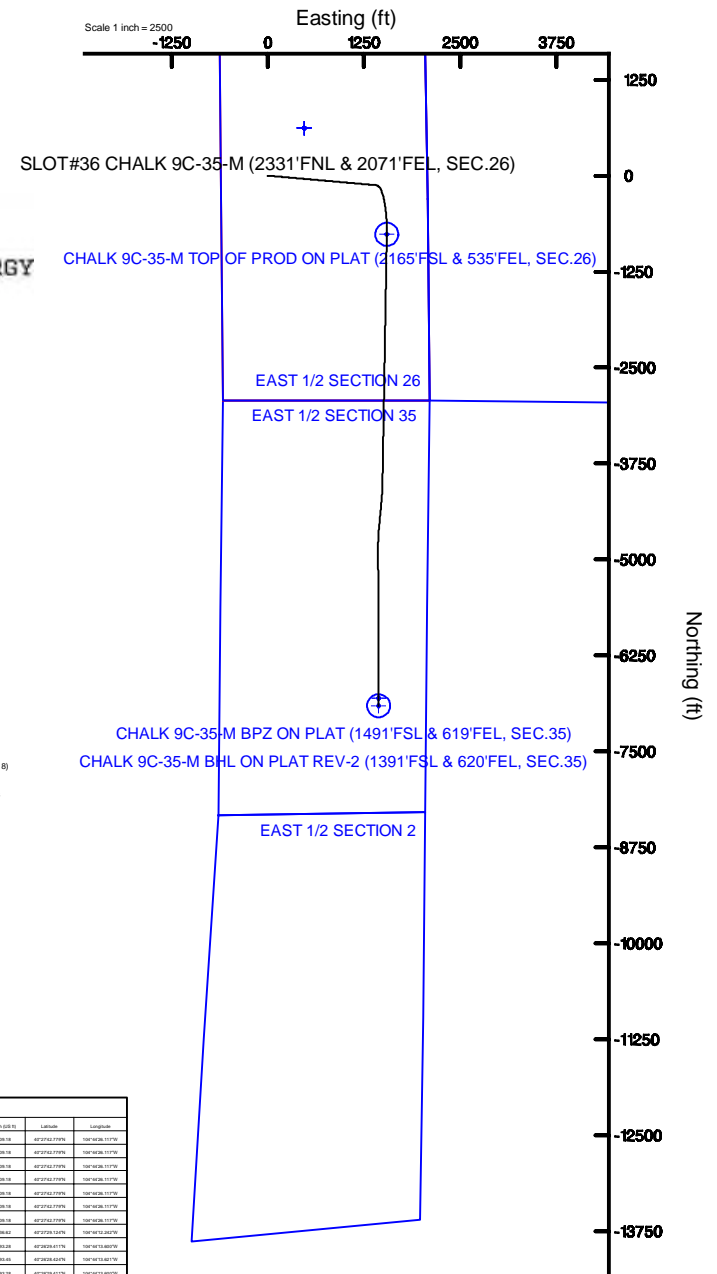
Start MD (ft)	End MD (ft)	Tool	Model	Log Name/Comment	Wellbore
4.00	1750.00	BHI NavTrak	BHI NavTrak (Rotating+Axial Corr)		CHALK 9C-35-M PWB
1750.00	13845.97	BHI AutoTrak Curve	BHI AutoTrak Curve (MagCAD+IFR1, Short spacing)		CHALK 9C-35-M PWB

Design Comment	MD (ft)	Inc (°)	Az (°)	TVD (ft)	Local N (ft)	Local E (ft)	DLS (°/100ft)	VS (ft)
Tie On	4.00	0.000	95.045	4.00	0.00	0.00	0.00	0.00
End of Tangent	300.00	0.000	95.045	300.00	0.00	0.00	0.00	0.00
End of Build	973.98	13.480	95.045	967.78	-6.94	78.61	2.00	22.83
End of Tangent	6711.26	13.480	95.045	6547.02	-124.54	1410.78	0.00	409.72
End of 3D Arc	7700.47	89.972	180.991	7156.00	-763.19	1545.29	9.00	1062.38
End of Tangent	10950.47	89.972	180.991	7157.59	-4012.71	1489.08	0.00	4232.09
End of 3D Arc	11160.92	89.972	185.200	7157.69	-4222.80	1477.72	2.00	4435.45
End of Tangent	11535.92	89.972	185.200	7157.87	-4596.26	1443.73	0.00	4794.12
End of 3D Arc	11808.87	89.971	179.741	7158.01	-4868.86	1431.97	2.00	5058.59
End of Tangent	13746.13	89.971	179.741	7159.00	-8606.09	1440.73	0.00	6956.87
End of 3D Arc	13843.99	90.028	182.122	7159.00	-6903.93	1439.14	2.43	7052.33
End of Tangent	13845.97	90.028	182.122	7159.00	-6905.91	1439.06	0.00	7054.26

Name	Start MD (ft)	End MD (ft)	Interval (ft)	Start TVD (ft)	End TVD (ft)	Start Local N (ft)	Start Local E (ft)	End Local N (ft)	End Local E (ft)	Wellbore
13.5in Open Hole	4.00	1750.00	1746.00	4.00	1722.42	0.00	0.00	-22.85	258.80	CHALK 9C-35-M PWB
9.625in Casing Surface	4.00	1750.00	1746.00	4.00	1722.42	0.00	0.00	-22.85	258.80	CHALK 9C-35-M PWB
8.5in Open Hole	1750.00	13845.97	12095.97	1722.42	7159.00	-22.85	258.80	-6905.91	1439.06	CHALK 9C-35-M PWB



To correct azimuth from Magnetic to True add 8.28 degrees

[illegible]

End of Tangent : 89.97° Inc, 13746.13ft MD, 7159.00ft TVD, 6956.87ft VS
End of 3D Arc : 90.03° Inc, 13843.99ft MD, 7159.00ft TVD, 7052.33ft VS
End of Tangent : 90.03° Inc, 13845.97ft MD, 7159.00ft TVD, 7054.26ft VS

Azimuth 168.23° with reference 0.00 N 0.00 E

Scale 1 inch = 1500

CHALK_9C-35-M__REV-B.0__PWP.las

~VERSION INFORMATION

VERS. 2.0 : CWLS LOG ASCII STANDARD-VERSION 2.0

WRAP. NO : ASCII DATA SECTION CONTAINS ONE ROW PER WELLPATH STATION

~WELL INFORMATION

#MNEM	.UNITS	DATA	:DESCRIPTION
#----	.-----	----	:-----
STRT	.ft	0.00	:START MD
STOP	.ft	13845.97	:STOP MD
STEP	.ft	0.0	:STEP (non-uniform increment)
NULL	.	-999.99	:NULL
COMP	.	SRC ENERGY	:OPERATOR
WELL	.	CHALK 9C-35-M	:WELL
FLD	.	WELD COUNTY (NAD83,TRUE NORTH)	:FIELD
LOC	.	COLORADO	:AREA (aka: Location)
CNTY	.	N/A	:COUNTY
STAT	.	N/A	:STATE
CTRY	.	N/A	:COUNTRY
SRVC	.	Baker Hughes	:CONTRACTOR
DATE	.	04/25/2018	:LOG REV DATE
API	.		:API NUMBER

~OTHER INFORMATION

#Software: WellArchitect(R) Version 5.0

#MNEM	.UNITS	DATA	:DESCRIPTION
#----	.-----	----	:-----
WPTYPE	.	PLANNED WELLPATH	:WELLPATH TYPE
FACILITY	.	SEC.26-T06N-R66W	:FACILITY
SLOT	.	SLOT#36 CHALK 9C-35-M (2331'FNL & 2071'FEL, SEC.26):SLOT	:SLOT
WELLBORE	.	CHALK 9C-35-M PWB	:WELLBORE
WELLPATH	.	CHALK 9C-35-M (REV-B.0) PWP	:WELLPATH
MDREFPT	.	PROPETRO 12 (4') (RKB)	:MD REFERENCE POINT
TVDREFPT	.	PROPETRO 12 (4') (RKB)	:TVD REFERENCE POINT
LCLREFPT	.	Slot	:LOCAL COORDINATE REFERENCE PT

CHALK_9C-35-M__REV-B.0__PWP.las

VSAZIMUTH.deg	168.23	:VERTICAL SECTION AZIMUTH
VSORIGN .ft	0.00	:VERTICAL SECTION ORIGIN NORTH
VSORIGE .ft	0.00	:VERTICAL SECTION ORIGIN EAST

~CURVE (WELLPATH) INFORMATION

#MNEM	.UNITS	:DESCRIPTION
#----	.-----	:-----
DEPT	.ft	:MEASURED DEPTH
INC	.deg	:INCLINATION
AZI	.deg	:AZIMUTH
TVD	.ft	:TRUE VERTICAL DEPTH
SECT	.ft	:CROSS SECTION (CURTAIN/VERTICAL)
LOCALN	.ft	:LOCAL NORTH
LOCALE	.ft	:LOCAL EAST
LAT	.deg	:LATITUDE
LONG	.deg	:LONGITUDE
DLS	.deg/100ft	:DOGLEG SEVERITY

~ASCII DATA

0.00	0.00	95.05	0.00	0.00	0.00	0.00	40.4601850	-104.7422869	0.00
4.00	0.00	95.05	4.00	0.00	0.00	0.00	40.4601850	-104.7422869	0.00
104.00	0.00	95.05	104.00	0.00	0.00	0.00	40.4601850	-104.7422869	0.00
204.00	0.00	95.05	204.00	0.00	0.00	0.00	40.4601850	-104.7422869	0.00
300.00	0.00	95.05	300.00	0.00	0.00	0.00	40.4601850	-104.7422869	0.00
304.00	0.08	95.05	304.00	0.00	0.00	0.00	40.4601850	-104.7422869	2.00
404.00	2.08	95.05	403.98	0.55	-0.17	1.88	40.4601845	-104.7422802	2.00
504.00	4.08	95.05	503.83	2.10	-0.64	7.23	40.4601832	-104.7422610	2.00
604.00	6.08	95.05	603.43	4.66	-1.42	16.05	40.4601811	-104.7422293	2.00
704.00	8.08	95.05	702.66	8.23	-2.50	28.33	40.4601781	-104.7421851	2.00
804.00	10.08	95.05	801.40	12.79	-3.89	44.05	40.4601743	-104.7421287	2.00
904.00	12.08	95.05	899.54	18.35	-5.58	63.19	40.4601697	-104.7420599	2.00
973.98	13.48	95.05	967.78	22.83	-6.94	78.61	40.4601660	-104.7420045	2.00
1004.00	13.48	95.05	996.97	24.85	-7.55	85.58	40.4601643	-104.7419794	0.00
1104.00	13.48	95.05	1094.22	31.60	-9.60	108.80	40.4601586	-104.7418960	0.00

CHALK_9C-35-M__REV-B.0__PWP.las

1204.00	13.48	95.05	1191.46	38.34	-11.65	132.02	40.4601530	-104.7418125	0.00
1304.00	13.48	95.05	1288.71	45.08	-13.70	155.24	40.4601474	-104.7417291	0.00
1404.00	13.48	95.05	1385.95	51.83	-15.75	178.46	40.4601418	-104.7416456	0.00
1504.00	13.48	95.05	1483.20	58.57	-17.80	201.68	40.4601361	-104.7415622	0.00
1604.00	13.48	95.05	1580.44	65.32	-19.85	224.90	40.4601305	-104.7414788	0.00
1704.00	13.48	95.05	1677.69	72.06	-21.90	248.12	40.4601249	-104.7413953	0.00
1804.00	13.48	95.05	1774.94	78.80	-23.95	271.34	40.4601192	-104.7413119	0.00
1904.00	13.48	95.05	1872.18	85.55	-26.00	294.56	40.4601136	-104.7412284	0.00
2004.00	13.48	95.05	1969.43	92.29	-28.05	317.78	40.4601080	-104.7411450	0.00
2104.00	13.48	95.05	2066.67	99.03	-30.10	341.00	40.4601024	-104.7410616	0.00
2204.00	13.48	95.05	2163.92	105.78	-32.15	364.21	40.4600967	-104.7409781	0.00
2304.00	13.48	95.05	2261.16	112.52	-34.20	387.43	40.4600911	-104.7408947	0.00
2404.00	13.48	95.05	2358.41	119.26	-36.25	410.65	40.4600855	-104.7408112	0.00
2504.00	13.48	95.05	2455.65	126.01	-38.30	433.87	40.4600799	-104.7407278	0.00
2604.00	13.48	95.05	2552.90	132.75	-40.35	457.09	40.4600742	-104.7406443	0.00
2704.00	13.48	95.05	2650.14	139.49	-42.40	480.31	40.4600686	-104.7405609	0.00
2804.00	13.48	95.05	2747.39	146.24	-44.45	503.53	40.4600630	-104.7404775	0.00
2904.00	13.48	95.05	2844.63	152.98	-46.50	526.75	40.4600573	-104.7403940	0.00
3004.00	13.48	95.05	2941.88	159.72	-48.55	549.97	40.4600517	-104.7403106	0.00
3104.00	13.48	95.05	3039.12	166.47	-50.60	573.19	40.4600461	-104.7402271	0.00
3204.00	13.48	95.05	3136.37	173.21	-52.65	596.41	40.4600405	-104.7401437	0.00
3304.00	13.48	95.05	3233.62	179.95	-54.70	619.63	40.4600348	-104.7400603	0.00
3404.00	13.48	95.05	3330.86	186.70	-56.75	642.85	40.4600292	-104.7399768	0.00
3504.00	13.48	95.05	3428.11	193.44	-58.80	666.07	40.4600236	-104.7398934	0.00
3604.00	13.48	95.05	3525.35	200.18	-60.85	689.29	40.4600180	-104.7398099	0.00
3704.00	13.48	95.05	3622.60	206.93	-62.90	712.51	40.4600123	-104.7397265	0.00
3804.00	13.48	95.05	3719.84	213.67	-64.95	735.73	40.4600067	-104.7396431	0.00
3904.00	13.48	95.05	3817.09	220.41	-67.00	758.95	40.4600011	-104.7395596	0.00
4004.00	13.48	95.05	3914.33	227.16	-69.05	782.17	40.4599954	-104.7394762	0.00
4104.00	13.48	95.05	4011.58	233.90	-71.10	805.38	40.4599898	-104.7393927	0.00
4204.00	13.48	95.05	4108.82	240.64	-73.15	828.60	40.4599842	-104.7393093	0.00
4304.00	13.48	95.05	4206.07	247.39	-75.20	851.82	40.4599786	-104.7392259	0.00
4404.00	13.48	95.05	4303.31	254.13	-77.25	875.04	40.4599729	-104.7391424	0.00
4504.00	13.48	95.05	4400.56	260.87	-79.30	898.26	40.4599673	-104.7390590	0.00

CHALK_9C-35-M__REV-B.0__PWP.las

4604.00	13.48	95.05	4497.80	267.62	-81.35	921.48	40.4599617	-104.7389755	0.00
4704.00	13.48	95.05	4595.05	274.36	-83.40	944.70	40.4599560	-104.7388921	0.00
4804.00	13.48	95.05	4692.30	281.10	-85.45	967.92	40.4599504	-104.7388087	0.00
4904.00	13.48	95.05	4789.54	287.85	-87.50	991.14	40.4599448	-104.7387252	0.00
5004.00	13.48	95.05	4886.79	294.59	-89.55	1014.36	40.4599392	-104.7386418	0.00
5104.00	13.48	95.05	4984.03	301.33	-91.60	1037.58	40.4599335	-104.7385583	0.00
5204.00	13.48	95.05	5081.28	308.08	-93.65	1060.80	40.4599279	-104.7384749	0.00
5304.00	13.48	95.05	5178.52	314.82	-95.69	1084.02	40.4599223	-104.7383914	0.00
5404.00	13.48	95.05	5275.77	321.56	-97.74	1107.24	40.4599166	-104.7383080	0.00
5504.00	13.48	95.05	5373.01	328.31	-99.79	1130.46	40.4599110	-104.7382246	0.00
5604.00	13.48	95.05	5470.26	335.05	-101.84	1153.68	40.4599054	-104.7381411	0.00
5704.00	13.48	95.05	5567.50	341.80	-103.89	1176.90	40.4598997	-104.7380577	0.00
5804.00	13.48	95.05	5664.75	348.54	-105.94	1200.12	40.4598941	-104.7379742	0.00
5904.00	13.48	95.05	5761.99	355.28	-107.99	1223.34	40.4598885	-104.7378908	0.00
6004.00	13.48	95.05	5859.24	362.03	-110.04	1246.55	40.4598829	-104.7378074	0.00
6104.00	13.48	95.05	5956.48	368.77	-112.09	1269.77	40.4598772	-104.7377239	0.00
6204.00	13.48	95.05	6053.73	375.51	-114.14	1292.99	40.4598716	-104.7376405	0.00
6304.00	13.48	95.05	6150.98	382.26	-116.19	1316.21	40.4598660	-104.7375570	0.00
6404.00	13.48	95.05	6248.22	389.00	-118.24	1339.43	40.4598603	-104.7374736	0.00
6504.00	13.48	95.05	6345.47	395.74	-120.29	1362.65	40.4598547	-104.7373902	0.00
6604.00	13.48	95.05	6442.71	402.49	-122.34	1385.87	40.4598491	-104.7373067	0.00
6704.00	13.48	95.05	6539.96	409.23	-124.39	1409.09	40.4598435	-104.7372233	0.00
6711.26	13.48	95.05	6547.02	409.72	-124.54	1410.78	40.4598430	-104.7372172	0.00
6804.00	16.30	126.12	6636.78	422.52	-133.18	1432.09	40.4598193	-104.7371406	9.00
6904.00	22.56	145.87	6731.13	450.73	-157.37	1454.23	40.4597529	-104.7370611	9.00
7004.00	30.19	156.73	6820.71	493.20	-196.44	1474.98	40.4596457	-104.7369865	9.00
7104.00	38.38	163.43	6903.29	548.89	-249.40	1493.80	40.4595003	-104.7369189	9.00
7204.00	46.82	168.03	6976.85	616.42	-314.95	1510.25	40.4593204	-104.7368598	9.00
7304.00	55.41	171.51	7039.58	694.14	-391.49	1523.92	40.4591103	-104.7368107	9.00
7404.00	64.08	174.32	7089.93	780.12	-477.13	1534.47	40.4588752	-104.7367728	9.00
7504.00	72.79	176.75	7126.65	872.26	-569.75	1541.64	40.4586210	-104.7367471	9.00
7604.00	81.53	178.96	7148.86	968.28	-667.08	1545.25	40.4583538	-104.7367341	9.00
7700.47	89.97	180.99	7156.00	1062.38	-763.19	1545.29	40.4580900	-104.7367340	9.00
7704.00	89.97	180.99	7156.00	1065.82	-766.72	1545.23	40.4580803	-104.7367342	0.00

CHALK_9C-35-M__REV-B.0__PWP.las

7804.00	89.97	180.99	7156.05	1163.35	-866.71	1543.50	40.4578059	-104.7367405	0.00
7904.00	89.97	180.99	7156.10	1260.88	-966.69	1541.77	40.4575314	-104.7367467	0.00
8004.00	89.97	180.99	7156.15	1358.41	-1066.68	1540.04	40.4572570	-104.7367529	0.00
8104.00	89.97	180.99	7156.20	1455.94	-1166.66	1538.31	40.4569825	-104.7367592	0.00
8204.00	89.97	180.99	7156.25	1553.47	-1266.65	1536.58	40.4567081	-104.7367654	0.00
8304.00	89.97	180.99	7156.29	1651.00	-1366.63	1534.85	40.4564336	-104.7367716	0.00
8404.00	89.97	180.99	7156.34	1748.53	-1466.62	1533.12	40.4561592	-104.7367779	0.00
8504.00	89.97	180.99	7156.39	1846.06	-1566.60	1531.39	40.4558847	-104.7367841	0.00
8604.00	89.97	180.99	7156.44	1943.59	-1666.59	1529.66	40.4556103	-104.7367904	0.00
8704.00	89.97	180.99	7156.49	2041.12	-1766.57	1527.93	40.4553359	-104.7367966	0.00
8804.00	89.97	180.99	7156.54	2138.65	-1866.56	1526.20	40.4550614	-104.7368028	0.00
8904.00	89.97	180.99	7156.59	2236.18	-1966.54	1524.47	40.4547870	-104.7368091	0.00
9004.00	89.97	180.99	7156.64	2333.71	-2066.53	1522.74	40.4545125	-104.7368153	0.00
9104.00	89.97	180.99	7156.69	2431.24	-2166.51	1521.01	40.4542381	-104.7368215	0.00
9204.00	89.97	180.99	7156.73	2528.77	-2266.50	1519.28	40.4539636	-104.7368278	0.00
9304.00	89.97	180.99	7156.78	2626.30	-2366.48	1517.55	40.4536892	-104.7368340	0.00
9404.00	89.97	180.99	7156.83	2723.83	-2466.47	1515.82	40.4534147	-104.7368403	0.00
9504.00	89.97	180.99	7156.88	2821.36	-2566.45	1514.09	40.4531403	-104.7368465	0.00
9604.00	89.97	180.99	7156.93	2918.89	-2666.44	1512.36	40.4528658	-104.7368527	0.00
9704.00	89.97	180.99	7156.98	3016.42	-2766.42	1510.64	40.4525914	-104.7368590	0.00
9804.00	89.97	180.99	7157.03	3113.95	-2866.41	1508.91	40.4523169	-104.7368652	0.00
9904.00	89.97	180.99	7157.08	3211.48	-2966.39	1507.18	40.4520425	-104.7368714	0.00
10004.00	89.97	180.99	7157.13	3309.01	-3066.38	1505.45	40.4517681	-104.7368777	0.00
10104.00	89.97	180.99	7157.17	3406.54	-3166.36	1503.72	40.4514936	-104.7368839	0.00
10204.00	89.97	180.99	7157.22	3504.07	-3266.35	1501.99	40.4512192	-104.7368901	0.00
10304.00	89.97	180.99	7157.27	3601.60	-3366.33	1500.26	40.4509447	-104.7368964	0.00
10404.00	89.97	180.99	7157.32	3699.12	-3466.32	1498.53	40.4506703	-104.7369026	0.00
10504.00	89.97	180.99	7157.37	3796.65	-3566.30	1496.80	40.4503958	-104.7369089	0.00
10604.00	89.97	180.99	7157.42	3894.18	-3666.29	1495.07	40.4501214	-104.7369151	0.00
10704.00	89.97	180.99	7157.47	3991.71	-3766.27	1493.34	40.4498469	-104.7369213	0.00
10804.00	89.97	180.99	7157.52	4089.24	-3866.26	1491.61	40.4495725	-104.7369276	0.00
10904.00	89.97	180.99	7157.57	4186.77	-3966.24	1489.88	40.4492980	-104.7369338	0.00
10950.47	89.97	180.99	7157.59	4232.09	-4012.71	1489.08	40.4491705	-104.7369367	0.00
11004.00	89.97	182.06	7157.61	4284.19	-4066.22	1487.65	40.4490236	-104.7369418	2.00

CHALK_9C-35-M__REV-B.0__PWP.las

11104.00	89.97	184.06	7157.66	4380.85	-4166.07	1482.31	40.4487495	-104.7369610	2.00
11160.92	89.97	185.20	7157.69	4435.45	-4222.80	1477.72	40.4485938	-104.7369776	2.00
11204.00	89.97	185.20	7157.71	4476.66	-4265.71	1473.81	40.4484761	-104.7369916	0.00
11304.00	89.97	185.20	7157.76	4572.30	-4365.29	1464.75	40.4482027	-104.7370242	0.00
11404.00	89.97	185.20	7157.81	4667.95	-4464.88	1455.68	40.4479293	-104.7370568	0.00
11504.00	89.97	185.20	7157.86	4763.59	-4564.47	1446.62	40.4476560	-104.7370894	0.00
11535.92	89.97	185.20	7157.87	4794.12	-4596.26	1443.73	40.4475687	-104.7370998	0.00
11604.00	89.97	183.84	7157.91	4859.47	-4664.13	1438.36	40.4473824	-104.7371190	2.00
11704.00	89.97	181.84	7157.96	4956.23	-4764.00	1433.41	40.4471083	-104.7371369	2.00
11804.00	89.97	179.84	7158.01	5053.82	-4863.98	1431.95	40.4468339	-104.7371421	2.00
11808.87	89.97	179.74	7158.01	5058.59	-4868.86	1431.97	40.4468205	-104.7371421	2.00
11904.00	89.97	179.74	7158.06	5151.80	-4963.98	1432.40	40.4465594	-104.7371405	0.00
12004.00	89.97	179.74	7158.11	5249.79	-5063.98	1432.85	40.4462849	-104.7371389	0.00
12104.00	89.97	179.74	7158.16	5347.78	-5163.98	1433.30	40.4460104	-104.7371373	0.00
12204.00	89.97	179.74	7158.21	5445.77	-5263.98	1433.75	40.4457359	-104.7371357	0.00
12304.00	89.97	179.74	7158.26	5543.76	-5363.98	1434.21	40.4454614	-104.7371341	0.00
12404.00	89.97	179.74	7158.31	5641.74	-5463.98	1434.66	40.4451869	-104.7371325	0.00
12504.00	89.97	179.74	7158.37	5739.73	-5563.98	1435.11	40.4449125	-104.7371309	0.00
12604.00	89.97	179.74	7158.42	5837.72	-5663.97	1435.56	40.4446380	-104.7371293	0.00
12704.00	89.97	179.74	7158.47	5935.71	-5763.97	1436.01	40.4443635	-104.7371277	0.00
12804.00	89.97	179.74	7158.52	6033.70	-5863.97	1436.47	40.4440890	-104.7371261	0.00
12904.00	89.97	179.74	7158.57	6131.69	-5963.97	1436.92	40.4438145	-104.7371245	0.00
13004.00	89.97	179.74	7158.62	6229.67	-6063.97	1437.37	40.4435400	-104.7371229	0.00
13104.00	89.97	179.74	7158.67	6327.66	-6163.97	1437.82	40.4432656	-104.7371213	0.00
13204.00	89.97	179.74	7158.72	6425.65	-6263.97	1438.28	40.4429911	-104.7371197	0.00
13304.00	89.97	179.74	7158.77	6523.64	-6363.97	1438.73	40.4427166	-104.7371181	0.00
13404.00	89.97	179.74	7158.83	6621.63	-6463.97	1439.18	40.4424421	-104.7371165	0.00
13504.00	89.97	179.74	7158.88	6719.62	-6563.97	1439.63	40.4421676	-104.7371149	0.00
13604.00	89.97	179.74	7158.93	6817.60	-6663.96	1440.08	40.4418931	-104.7371133	0.00
13704.00	89.97	179.74	7158.98	6915.59	-6763.96	1440.54	40.4416186	-104.7371117	0.00
13746.13	89.97	179.74	7159.00	6956.87	-6806.09	1440.73	40.4415030	-104.7371110	0.00
13804.00	90.01	181.15	7159.01	7013.43	-6863.96	1440.28	40.4413442	-104.7371126	2.43
13843.99	90.03	182.12	7159.00	7052.33	-6903.93	1439.14	40.4412344	-104.7371167	2.43
13845.97	90.03	182.12	7159.00	7054.26	-6905.91	1439.06	40.4412290	-104.7371170	0.00



Planned Wellpath Report

CHALK 9C-35-M (REV-B.0) PWP

Page 1 of 9



REFERENCE WELLPATH IDENTIFICATION

Operator	SRC ENERGY	Slot	SLOT#36 CHALK 9C-35-M (2331'FNL & 2071'FEL, SEC.26)
Area	COLORADO	Well	CHALK 9C-35-M
Field	WELD COUNTY (NAD83,TRUE NORTH)	Wellbore	CHALK 9C-35-M PWB
Facility	SEC.26-T06N-R66W		

REPORT SETUP INFORMATION

Projection System	NAD83 / Lambert Colorado SP, Northern Zone (501), US feet	Software System	WellArchitect® 5.0
North Reference	True	User	Doddanna
Scale	0.999964	Report Generated	8/8/2018 at 10:19:42 AM
Convergence at slot	0.49° East	Database/Source file	WellArchitectDB2/CHALK_9C-35-M__REV-B.0__PWP.xml

WELLPATH LOCATION

	Local coordinates		Grid coordinates		Geographic coordinates	
	North[ft]	East[ft]	Easting[US ft]	Northing[US ft]	Latitude	Longitude
Slot Location	-618.62	-472.76	3210841.02	1411386.56	40°27'36.666"N	104°44'32.233"W
Facility Reference Pt			3211308.44	1412009.18	40°27'42.779"N	104°44'26.117"W
Field Reference Pt			3171284.48	1426358.81	40°30'07.643"N	104°53'02.634"W

WELLPATH DATUM

Calculation method	Minimum curvature	PROPETRO 12 (4') (RKB) to Facility Vertical Datum	4700.00ft
Horizontal Reference Pt	Slot	PROPETRO 12 (4') (RKB) to Mean Sea Level	4700.00ft
Vertical Reference Pt	PROPETRO 12 (4') (RKB)	PROPETRO 12 (4') (RKB) to Mud Line at Slot (SLOT#36 CHALK 9C-35-M (2331'FNL & 2071'FEL, SEC.26))	4700.00ft
MD Reference Pt	PROPETRO 12 (4') (RKB)	Section Origin	N 0.00, E 0.00 ft
Field Vertical Reference	Mean Sea Level	Section Azimuth	168.23°



Planned Wellpath Report

CHALK 9C-35-M (REV-B.0) PWP

Page 2 of 9



REFERENCE WELLPATH IDENTIFICATION			
Operator	SRC ENERGY	Slot	SLOT#36 CHALK 9C-35-M (2331'FNL & 2071'FEL, SEC.26)
Area	COLORADO	Well	CHALK 9C-35-M
Field	WELD COUNTY (NAD83,TRUE NORTH)	Wellbore	CHALK 9C-35-M PWB
Facility	SEC.26-T06N-R66W		

WELLPATH DATA (151 stations) † = interpolated/extrapolated station								
MD [ft]	Inclination [°]	Azimuth [°]	TVD [ft]	Vert Sect [ft]	North [ft]	East [ft]	DLS [°/100ft]	Comments
0.00†	0.000	95.045	0.00	0.00	0.00	0.00	0.00	
4.00	0.000	95.045	4.00	0.00	0.00	0.00	0.00	Tie On
104.00†	0.000	95.045	104.00	0.00	0.00	0.00	0.00	
204.00†	0.000	95.045	204.00	0.00	0.00	0.00	0.00	
300.00	0.000	95.045	300.00	0.00	0.00	0.00	0.00	End of Tangent
304.00†	0.080	95.045	304.00	0.00	0.00	0.00	2.00	
404.00†	2.080	95.045	403.98	0.55	-0.17	1.88	2.00	
504.00†	4.080	95.045	503.83	2.10	-0.64	7.23	2.00	
604.00†	6.080	95.045	603.43	4.66	-1.42	16.05	2.00	
704.00†	8.080	95.045	702.66	8.23	-2.50	28.33	2.00	
804.00†	10.080	95.045	801.40	12.79	-3.89	44.05	2.00	
904.00†	12.080	95.045	899.54	18.35	-5.58	63.19	2.00	
973.98	13.480	95.045	967.78	22.83	-6.94	78.61	2.00	End of Build
1004.00†	13.480	95.045	996.97	24.85	-7.55	85.58	0.00	
1104.00†	13.480	95.045	1094.22	31.60	-9.60	108.80	0.00	
1204.00†	13.480	95.045	1191.46	38.34	-11.65	132.02	0.00	
1304.00†	13.480	95.045	1288.71	45.08	-13.70	155.24	0.00	
1404.00†	13.480	95.045	1385.95	51.83	-15.75	178.46	0.00	
1504.00†	13.480	95.045	1483.20	58.57	-17.80	201.68	0.00	
1604.00†	13.480	95.045	1580.44	65.32	-19.85	224.90	0.00	
1704.00†	13.480	95.045	1677.69	72.06	-21.90	248.12	0.00	
1804.00†	13.480	95.045	1774.94	78.80	-23.95	271.34	0.00	
1904.00†	13.480	95.045	1872.18	85.55	-26.00	294.56	0.00	
2004.00†	13.480	95.045	1969.43	92.29	-28.05	317.78	0.00	
2104.00†	13.480	95.045	2066.67	99.03	-30.10	341.00	0.00	
2204.00†	13.480	95.045	2163.92	105.78	-32.15	364.21	0.00	
2304.00†	13.480	95.045	2261.16	112.52	-34.20	387.43	0.00	
2404.00†	13.480	95.045	2358.41	119.26	-36.25	410.65	0.00	
2504.00†	13.480	95.045	2455.65	126.01	-38.30	433.87	0.00	
2604.00†	13.480	95.045	2552.90	132.75	-40.35	457.09	0.00	



Planned Wellpath Report

CHALK 9C-35-M (REV-B.0) PWP

Page 3 of 9



REFERENCE WELLPATH IDENTIFICATION			
Operator	SRC ENERGY	Slot	SLOT#36 CHALK 9C-35-M (2331'FNL & 2071'FEL, SEC.26)
Area	COLORADO	Well	CHALK 9C-35-M
Field	WELD COUNTY (NAD83,TRUE NORTH)	Wellbore	CHALK 9C-35-M PWB
Facility	SEC.26-T06N-R66W		

WELLPATH DATA (151 stations) † = interpolated/extrapolated station								
MD [ft]	Inclination [°]	Azimuth [°]	TVD [ft]	Vert Sect [ft]	North [ft]	East [ft]	DLS [°/100ft]	Comments
2704.00†	13.480	95.045	2650.14	139.49	-42.40	480.31	0.00	
2804.00†	13.480	95.045	2747.39	146.24	-44.45	503.53	0.00	
2904.00†	13.480	95.045	2844.63	152.98	-46.50	526.75	0.00	
3004.00†	13.480	95.045	2941.88	159.72	-48.55	549.97	0.00	
3104.00†	13.480	95.045	3039.12	166.47	-50.60	573.19	0.00	
3204.00†	13.480	95.045	3136.37	173.21	-52.65	596.41	0.00	
3304.00†	13.480	95.045	3233.62	179.95	-54.70	619.63	0.00	
3404.00†	13.480	95.045	3330.86	186.70	-56.75	642.85	0.00	
3504.00†	13.480	95.045	3428.11	193.44	-58.80	666.07	0.00	
3604.00†	13.480	95.045	3525.35	200.18	-60.85	689.29	0.00	
3704.00†	13.480	95.045	3622.60	206.93	-62.90	712.51	0.00	
3804.00†	13.480	95.045	3719.84	213.67	-64.95	735.73	0.00	
3904.00†	13.480	95.045	3817.09	220.41	-67.00	758.95	0.00	
4004.00†	13.480	95.045	3914.33	227.16	-69.05	782.17	0.00	
4104.00†	13.480	95.045	4011.58	233.90	-71.10	805.38	0.00	
4204.00†	13.480	95.045	4108.82	240.64	-73.15	828.60	0.00	
4304.00†	13.480	95.045	4206.07	247.39	-75.20	851.82	0.00	
4404.00†	13.480	95.045	4303.31	254.13	-77.25	875.04	0.00	
4504.00†	13.480	95.045	4400.56	260.87	-79.30	898.26	0.00	
4604.00†	13.480	95.045	4497.80	267.62	-81.35	921.48	0.00	
4704.00†	13.480	95.045	4595.05	274.36	-83.40	944.70	0.00	
4804.00†	13.480	95.045	4692.30	281.10	-85.45	967.92	0.00	
4904.00†	13.480	95.045	4789.54	287.85	-87.50	991.14	0.00	
5004.00†	13.480	95.045	4886.79	294.59	-89.55	1014.36	0.00	
5104.00†	13.480	95.045	4984.03	301.33	-91.60	1037.58	0.00	
5204.00†	13.480	95.045	5081.28	308.08	-93.65	1060.80	0.00	
5304.00†	13.480	95.045	5178.52	314.82	-95.69	1084.02	0.00	
5404.00†	13.480	95.045	5275.77	321.56	-97.74	1107.24	0.00	
5504.00†	13.480	95.045	5373.01	328.31	-99.79	1130.46	0.00	
5604.00†	13.480	95.045	5470.26	335.05	-101.84	1153.68	0.00	



Planned Wellpath Report

CHALK 9C-35-M (REV-B.0) PWP

Page 4 of 9



REFERENCE WELLPATH IDENTIFICATION			
Operator	SRC ENERGY	Slot	SLOT#36 CHALK 9C-35-M (2331'FNL & 2071'FEL, SEC.26)
Area	COLORADO	Well	CHALK 9C-35-M
Field	WELD COUNTY (NAD83,TRUE NORTH)	Wellbore	CHALK 9C-35-M PWB
Facility	SEC.26-T06N-R66W		

WELLPATH DATA (151 stations) † = interpolated/extrapolated station								
MD [ft]	Inclination [°]	Azimuth [°]	TVD [ft]	Vert Sect [ft]	North [ft]	East [ft]	DLS [°/100ft]	Comments
5704.00†	13.480	95.045	5567.50	341.80	-103.89	1176.90	0.00	
5804.00†	13.480	95.045	5664.75	348.54	-105.94	1200.12	0.00	
5904.00†	13.480	95.045	5761.99	355.28	-107.99	1223.34	0.00	
6004.00†	13.480	95.045	5859.24	362.03	-110.04	1246.55	0.00	
6104.00†	13.480	95.045	5956.48	368.77	-112.09	1269.77	0.00	
6204.00†	13.480	95.045	6053.73	375.51	-114.14	1292.99	0.00	
6304.00†	13.480	95.045	6150.98	382.26	-116.19	1316.21	0.00	
6404.00†	13.480	95.045	6248.22	389.00	-118.24	1339.43	0.00	
6504.00†	13.480	95.045	6345.47	395.74	-120.29	1362.65	0.00	
6604.00†	13.480	95.045	6442.71	402.49	-122.34	1385.87	0.00	
6704.00†	13.480	95.045	6539.96	409.23	-124.39	1409.09	0.00	
6711.26	13.480	95.045	6547.02	409.72	-124.54	1410.78	0.00	End of Tangent
6804.00†	16.295	126.118	6636.78	422.52	-133.18	1432.09	9.00	
6904.00†	22.563	145.867	6731.13	450.73	-157.37	1454.23	9.00	
7004.00†	30.192	156.733	6820.71	493.20	-196.44	1474.98	9.00	
7104.00†	38.377	163.425	6903.29	548.89	-249.40	1493.80	9.00	
7204.00†	46.824	168.033	6976.85	616.42	-314.95	1510.25	9.00	
7304.00†	55.410	171.507	7039.58	694.14	-391.49	1523.92	9.00	
7404.00†	64.077	174.324	7089.93	780.12	-477.13	1534.47	9.00	
7504.00†	72.790	176.750	7126.65	872.26	-569.75	1541.64	9.00	
7604.00†	81.530	178.957	7148.86	968.28	-667.08	1545.25	9.00	
7700.47	89.972	180.991	7156.00 [†]	1062.38	-763.19	1545.29	9.00	End of 3D Arc
7704.00†	89.972	180.991	7156.00	1065.82	-766.72	1545.23	0.00	
7804.00†	89.972	180.991	7156.05	1163.35	-866.71	1543.50	0.00	
7904.00†	89.972	180.991	7156.10	1260.88	-966.69	1541.77	0.00	
8004.00†	89.972	180.991	7156.15	1358.41	-1066.68	1540.04	0.00	
8104.00†	89.972	180.991	7156.20	1455.94	-1166.66	1538.31	0.00	
8204.00†	89.972	180.991	7156.25	1553.47	-1266.65	1536.58	0.00	
8304.00†	89.972	180.991	7156.29	1651.00	-1366.63	1534.85	0.00	
8404.00†	89.972	180.991	7156.34	1748.53	-1466.62	1533.12	0.00	



Planned Wellpath Report

CHALK 9C-35-M (REV-B.0) PWP

Page 5 of 9



REFERENCE WELLPATH IDENTIFICATION			
Operator	SRC ENERGY	Slot	SLOT#36 CHALK 9C-35-M (2331'FNL & 2071'FEL, SEC.26)
Area	COLORADO	Well	CHALK 9C-35-M
Field	WELD COUNTY (NAD83,TRUE NORTH)	Wellbore	CHALK 9C-35-M PWB
Facility	SEC.26-T06N-R66W		

WELLPATH DATA (151 stations) † = interpolated/extrapolated station

MD [ft]	Inclination [°]	Azimuth [°]	TVD [ft]	Vert Sect [ft]	North [ft]	East [ft]	DLS [°/100ft]	Comments
8504.00†	89.972	180.991	7156.39	1846.06	-1566.60	1531.39	0.00	
8604.00†	89.972	180.991	7156.44	1943.59	-1666.59	1529.66	0.00	
8704.00†	89.972	180.991	7156.49	2041.12	-1766.57	1527.93	0.00	
8804.00†	89.972	180.991	7156.54	2138.65	-1866.56	1526.20	0.00	
8904.00†	89.972	180.991	7156.59	2236.18	-1966.54	1524.47	0.00	
9004.00†	89.972	180.991	7156.64	2333.71	-2066.53	1522.74	0.00	
9104.00†	89.972	180.991	7156.69	2431.24	-2166.51	1521.01	0.00	
9204.00†	89.972	180.991	7156.73	2528.77	-2266.50	1519.28	0.00	
9304.00†	89.972	180.991	7156.78	2626.30	-2366.48	1517.55	0.00	
9404.00†	89.972	180.991	7156.83	2723.83	-2466.47	1515.82	0.00	
9504.00†	89.972	180.991	7156.88	2821.36	-2566.45	1514.09	0.00	
9604.00†	89.972	180.991	7156.93	2918.89	-2666.44	1512.36	0.00	
9704.00†	89.972	180.991	7156.98	3016.42	-2766.42	1510.64	0.00	
9804.00†	89.972	180.991	7157.03	3113.95	-2866.41	1508.91	0.00	
9904.00†	89.972	180.991	7157.08	3211.48	-2966.39	1507.18	0.00	
10004.00†	89.972	180.991	7157.13	3309.01	-3066.38	1505.45	0.00	
10104.00†	89.972	180.991	7157.17	3406.54	-3166.36	1503.72	0.00	
10204.00†	89.972	180.991	7157.22	3504.07	-3266.35	1501.99	0.00	
10304.00†	89.972	180.991	7157.27	3601.60	-3366.33	1500.26	0.00	
10404.00†	89.972	180.991	7157.32	3699.12	-3466.32	1498.53	0.00	
10504.00†	89.972	180.991	7157.37	3796.65	-3566.30	1496.80	0.00	
10604.00†	89.972	180.991	7157.42	3894.18	-3666.29	1495.07	0.00	
10704.00†	89.972	180.991	7157.47	3991.71	-3766.27	1493.34	0.00	
10804.00†	89.972	180.991	7157.52	4089.24	-3866.26	1491.61	0.00	
10904.00†	89.972	180.991	7157.57	4186.77	-3966.24	1489.88	0.00	
10950.47	89.972	180.991	7157.59	4232.09	-4012.71	1489.08	0.00	End of Tangent
11004.00†	89.972	182.062	7157.61	4284.19	-4066.22	1487.65	2.00	
11104.00†	89.972	184.062	7157.66	4380.85	-4166.07	1482.31	2.00	
11160.92	89.972	185.200	7157.69	4435.45	-4222.80	1477.72	2.00	End of 3D Arc
11204.00†	89.972	185.200	7157.71	4476.66	-4265.71	1473.81	0.00	



Planned Wellpath Report

CHALK 9C-35-M (REV-B.0) PWP

Page 6 of 9



REFERENCE WELLPATH IDENTIFICATION			
Operator	SRC ENERGY	Slot	SLOT#36 CHALK 9C-35-M (2331'FNL & 2071'FEL, SEC.26)
Area	COLORADO	Well	CHALK 9C-35-M
Field	WELD COUNTY (NAD83,TRUE NORTH)	Wellbore	CHALK 9C-35-M PWB
Facility	SEC.26-T06N-R66W		

WELLPATH DATA (151 stations) † = interpolated/extrapolated station								
MD [ft]	Inclination [°]	Azimuth [°]	TVD [ft]	Vert Sect [ft]	North [ft]	East [ft]	DLS [°/100ft]	Comments
11304.00†	89.972	185.200	7157.76	4572.30	-4365.29	1464.75	0.00	
11404.00†	89.972	185.200	7157.81	4667.95	-4464.88	1455.68	0.00	
11504.00†	89.972	185.200	7157.86	4763.59	-4564.47	1446.62	0.00	
11535.92	89.972	185.200	7157.87	4794.12	-4596.26	1443.73	0.00	End of Tangent
11604.00†	89.972	183.838	7157.91	4859.47	-4664.13	1438.36	2.00	
11704.00†	89.971	181.838	7157.96	4956.23	-4764.00	1433.41	2.00	
11804.00†	89.971	179.838	7158.01	5053.82	-4863.98	1431.95	2.00	
11808.87	89.971	179.741	7158.01	5058.59	-4868.86	1431.97	2.00	End of 3D Arc
11904.00†	89.971	179.741	7158.06	5151.80	-4963.98	1432.40	0.00	
12004.00†	89.971	179.741	7158.11	5249.79	-5063.98	1432.85	0.00	
12104.00†	89.971	179.741	7158.16	5347.78	-5163.98	1433.30	0.00	
12204.00†	89.971	179.741	7158.21	5445.77	-5263.98	1433.75	0.00	
12304.00†	89.971	179.741	7158.26	5543.76	-5363.98	1434.21	0.00	
12404.00†	89.971	179.741	7158.31	5641.74	-5463.98	1434.66	0.00	
12504.00†	89.971	179.741	7158.37	5739.73	-5563.98	1435.11	0.00	
12604.00†	89.971	179.741	7158.42	5837.72	-5663.97	1435.56	0.00	
12704.00†	89.971	179.741	7158.47	5935.71	-5763.97	1436.01	0.00	
12804.00†	89.971	179.741	7158.52	6033.70	-5863.97	1436.47	0.00	
12904.00†	89.971	179.741	7158.57	6131.69	-5963.97	1436.92	0.00	
13004.00†	89.971	179.741	7158.62	6229.67	-6063.97	1437.37	0.00	
13104.00†	89.971	179.741	7158.67	6327.66	-6163.97	1437.82	0.00	
13204.00†	89.971	179.741	7158.72	6425.65	-6263.97	1438.28	0.00	
13304.00†	89.971	179.741	7158.77	6523.64	-6363.97	1438.73	0.00	
13404.00†	89.971	179.741	7158.83	6621.63	-6463.97	1439.18	0.00	
13504.00†	89.971	179.741	7158.88	6719.62	-6563.97	1439.63	0.00	
13604.00†	89.971	179.741	7158.93	6817.60	-6663.96	1440.08	0.00	
13704.00†	89.971	179.741	7158.98	6915.59	-6763.96	1440.54	0.00	
13746.13	89.971	179.741	7159.00 ²	6956.87	-6806.09	1440.73	0.00	End of Tangent
13804.00†	90.005	181.149	7159.01	7013.43	-6863.96	1440.28	2.43	
13843.99	90.028	182.122	7159.00	7052.33	-6903.93	1439.14	2.43	End of 3D Arc



Planned Wellpath Report

CHALK 9C-35-M (REV-B.0) PWP

Page 7 of 9



REFERENCE WELLPATH IDENTIFICATION			
Operator	SRC ENERGY	Slot	SLOT#36 CHALK 9C-35-M (2331'FNL & 2071'FEL, SEC.26)
Area	COLORADO	Well	CHALK 9C-35-M
Field	WELD COUNTY (NAD83,TRUE NORTH)	Wellbore	CHALK 9C-35-M PWB
Facility	SEC.26-T06N-R66W		

WELLPATH DATA (151 stations)								
MD [ft]	Inclination [°]	Azimuth [°]	TVD [ft]	Vert Sect [ft]	North [ft]	East [ft]	DLS [°/100ft]	Comments
13845.97	90.028	182.122	7159.00 ³	7054.26	-6905.91	1439.06	0.00	End of Tangent

HOLE & CASING SECTIONS - Ref Wellbore: CHALK 9C-35-M PWB Ref Wellpath: CHALK 9C-35-M (REV-B.0) PWP									
String/Diameter	Start MD [ft]	End MD [ft]	Interval [ft]	Start TVD [ft]	End TVD [ft]	Start N/S [ft]	Start E/W [ft]	End N/S [ft]	End E/W [ft]
13.5in Open Hole	4.00	1750.00	1746.00	4.00	1722.42	0.00	0.00	-22.85	258.80
9.625in Casing Surface	4.00	1750.00	1746.00	4.00	1722.42	0.00	0.00	-22.85	258.80
8.5in Open Hole	1750.00	13845.97	12095.97	1722.42	7159.00	-22.85	258.80	-6905.91	1439.06



Planned Wellpath Report

CHALK 9C-35-M (REV-B.0) PWP

Page 8 of 9



REFERENCE WELLPATH IDENTIFICATION			
Operator	SRC ENERGY	Slot	SLOT#36 CHALK 9C-35-M (2331'FNL & 2071'FEL, SEC.26)
Area	COLORADO	Well	CHALK 9C-35-M
Field	WELD COUNTY (NAD83,TRUE NORTH)	Wellbore	CHALK 9C-35-M PWB
Facility	SEC.26-T06N-R66W		

TARGETS									
Name	MD [ft]	TVD [ft]	North [ft]	East [ft]	Grid East [US ft]	Grid North [US ft]	Latitude	Longitude	Shape
EAST HALF OF SEC.02-T05N-R66W		-23.00	618.63	472.74	3211308.44	1412009.18	40°27'42.779"N	104°44'26.117"W	polygon
EAST HALF OF SEC.26-T06N-R66W		-23.00	618.63	472.74	3211308.44	1412009.18	40°27'42.779"N	104°44'26.117"W	polygon
EAST HALF OF SEC.35-T06N-R66W		-23.00	618.63	472.74	3211308.44	1412009.18	40°27'42.779"N	104°44'26.117"W	polygon
SEC.25-T06N-R66W		-23.00	618.63	472.74	3211308.44	1412009.18	40°27'42.779"N	104°44'26.117"W	polygon
SEC.30-T06N-R65W		-23.00	618.63	472.74	3211308.44	1412009.18	40°27'42.779"N	104°44'26.117"W	polygon
SOUTH HALF OF SEC.19-T06N-R65W		-23.00	618.63	472.74	3211308.44	1412009.18	40°27'42.779"N	104°44'26.117"W	polygon
SOUTH HALF OF SEC.24-T06N-R66W		-23.00	618.63	472.74	3211308.44	1412009.18	40°27'42.779"N	104°44'26.117"W	polygon
1) CHALK 9C-35-M TOP OF PROD ON PLAT (2165'FSL & 535'FEL, SEC.26)	7700.47	7156.00	-763.19	1545.29	3212392.71	1410636.62	40°27'29.124"N	104°44'12.242"W	circle
CHALK 9C-35-M BHL ON PLAT (1491'FSL & 619'FEL, SEC.35)		7159.00	-6806.09	1440.73	3212339.79	1404593.28	40°26'29.411"N	104°44'13.600"W	circle
3) CHALK 9C-35-M BHL ON PLAT REV-2 (1391'FSL & 620'FEL, SEC.35)	13845.97	7159.00	-6905.91	1439.06	3212338.98	1404493.45	40°26'28.424"N	104°44'13.621"W	circle
2) CHALK 9C-35-M BPZ ON PLAT (1491'FSL & 619'FEL, SEC.35)	13746.13	7159.00	-6806.09	1440.73	3212339.79	1404593.28	40°26'29.411"N	104°44'13.600"W	circle



Planned Wellpath Report

CHALK 9C-35-M (REV-B.0) PWP

Page 9 of 9



REFERENCE WELLPATH IDENTIFICATION			
Operator	SRC ENERGY	Slot	SLOT#36 CHALK 9C-35-M (2331'FNL & 2071'FEL, SEC.26)
Area	COLORADO	Well	CHALK 9C-35-M
Field	WELD COUNTY (NAD83,TRUE NORTH)	Wellbore	CHALK 9C-35-M PWB
Facility	SEC.26-T06N-R66W		

SURVEY PROGRAM - Ref Wellbore: CHALK 9C-35-M PWB Ref Wellpath: CHALK 9C-35-M (REV-B.0) PWP				
Start MD [ft]	End MD [ft]	Positional Uncertainty Model	Log Name/Comment	Wellbore
4.00	1750.00	BHI NaviTrak (Rotating+Axial Corr)		CHALK 9C-35-M PWB
1750.00	13845.97	BHI AutoTrak Curve (MagCAD+IFR1, Short spacing)		CHALK 9C-35-M PWB