



Lat40°, Inc. 6250 W. 10th Street, Unit 2, Greeley, CO 970-515-5294

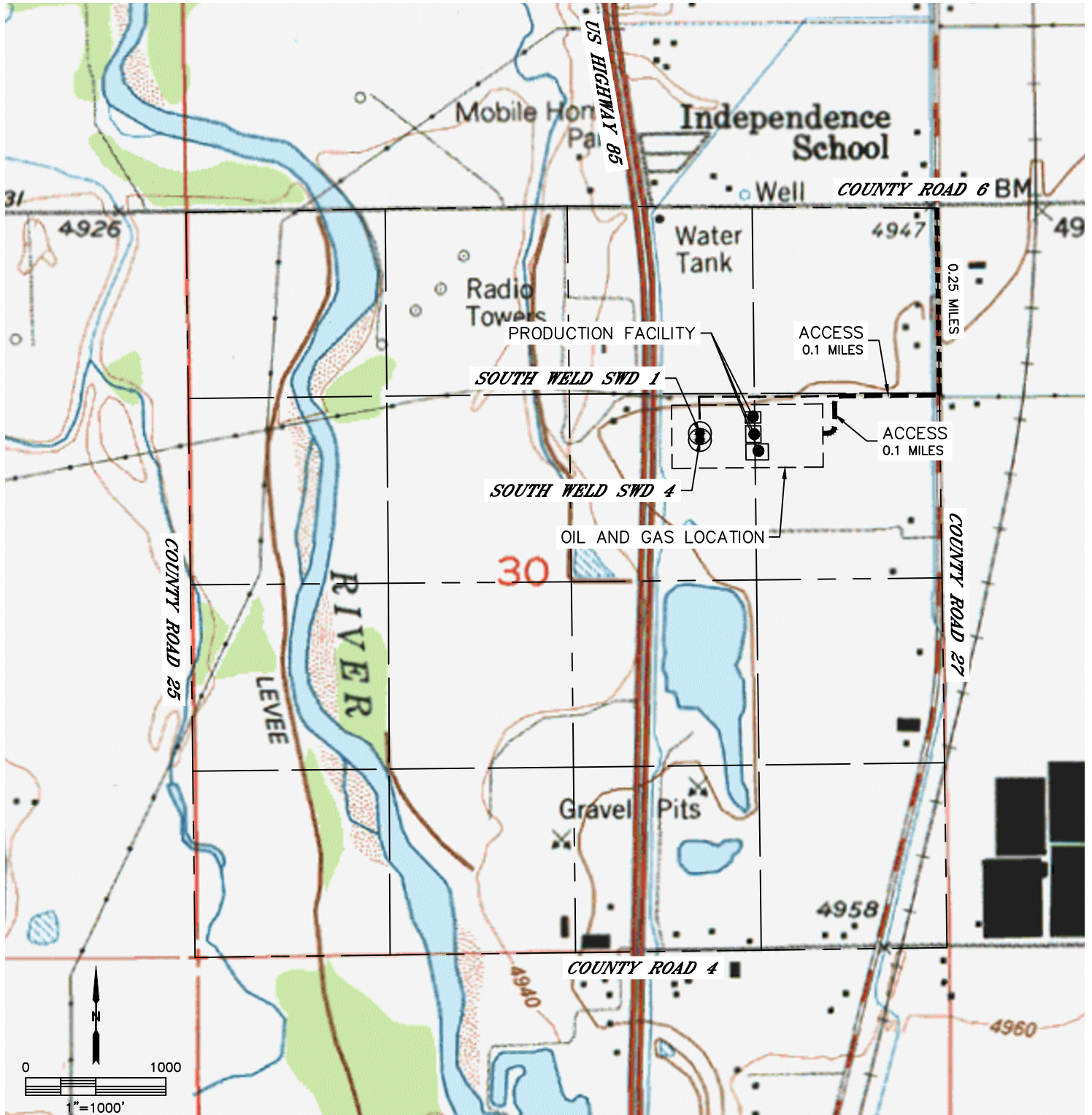
ACCESS ROAD MAP

SOUTH WELD SWD FACILITY

SECTION: 30
TOWNSHIP: 1N
RANGE: 66W
6TH. P.M.
WELD COUNTY, CO

DRIVING DIRECTIONS TO SOUTH WELD SWD FACILITY

FROM THE INTERSECTION OF COUNTY ROAD 6 AND COUNTY ROAD 27, GO SOUTH ON COUNTY ROAD 27 FOR 0.25 MILES TO AN EXISTING ACCESS ROAD TO THE WEST. GO WEST ON EXISTING ROAD FOR 0.1 MILES TO A PROPOSED ACCESS ROAD TO THE SOUTH. THENCE SOUTH AND WEST ON PROPOSED ROAD FOR 0.1 MILES TO THE PROPOSED FACILITY.



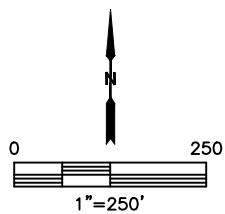
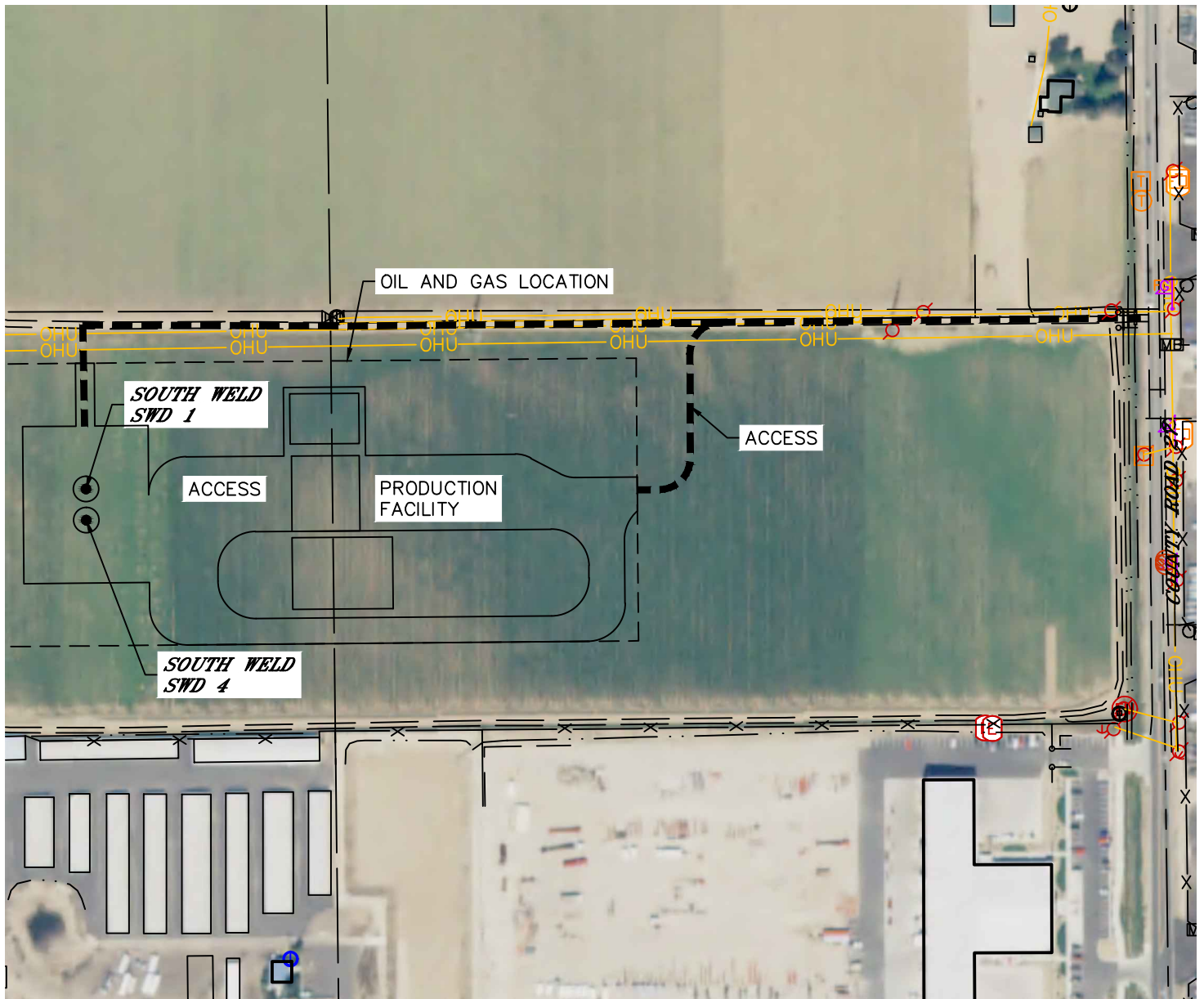


Lat40°, Inc. 6250 W. 10th Street, Unit 2, Greeley, CO 970-515-5294

ACCESS ROAD MAP

SOUTH WELD SWD FACILITY

SECTION: 30
TOWNSHIP: 1N
RANGE: 66W
6TH. P.M.
WELD COUNTY, CO



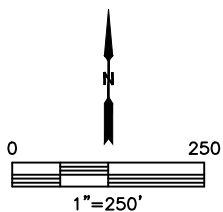
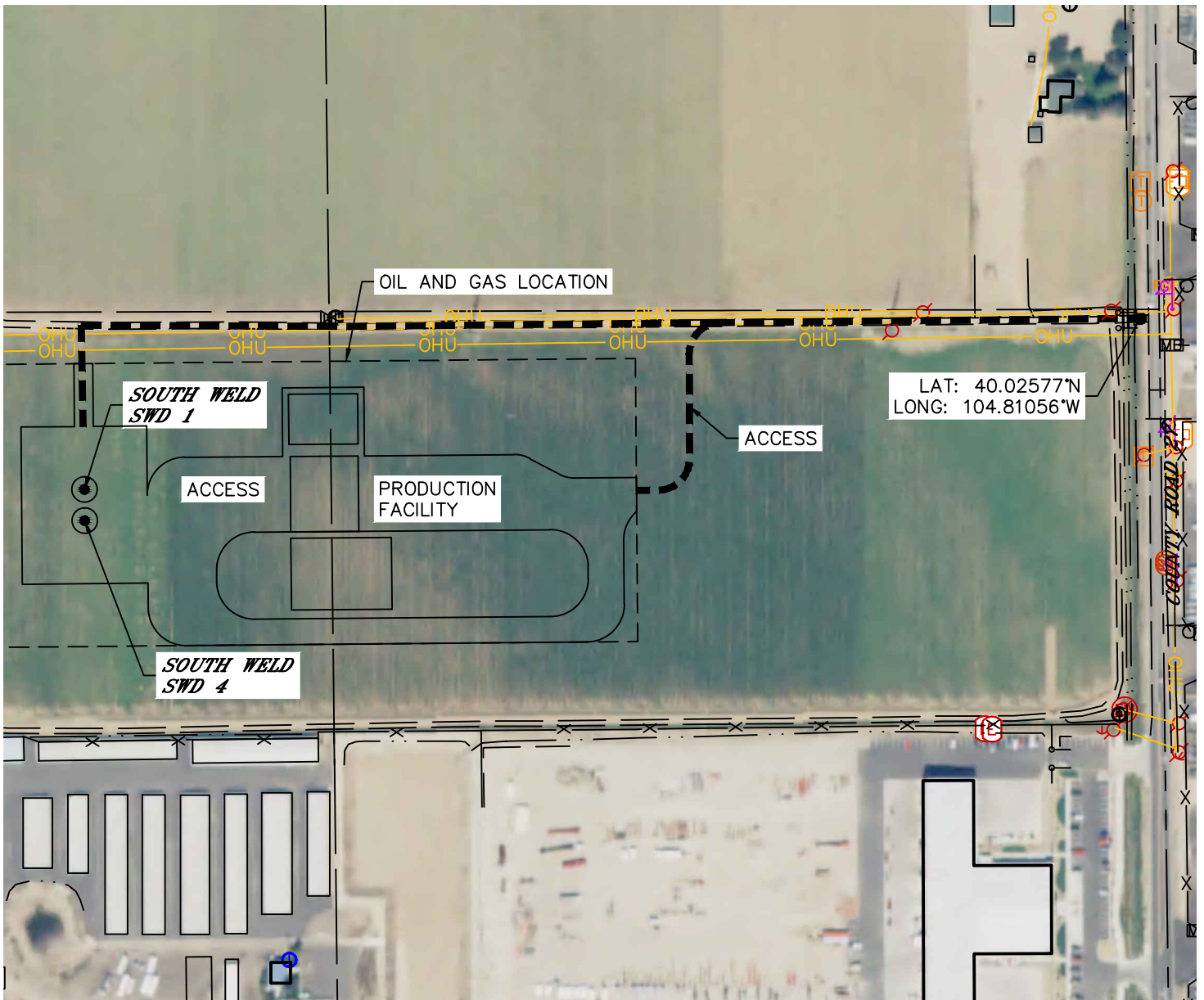


Lat40°, Inc. 6250 W. 10th Street, Unit 2, Greeley, CO 970-515-5294

ACCESS POINT MAP

SOUTH WELD SWD FACILITY

SECTION: 30
TOWNSHIP: 1N
RANGE: 66W
6TH. P.M.
WELD COUNTY, CO





Lat40°, Inc. 6250 W. 10th Street, Unit 2, Greeley, CO 970-515-5294

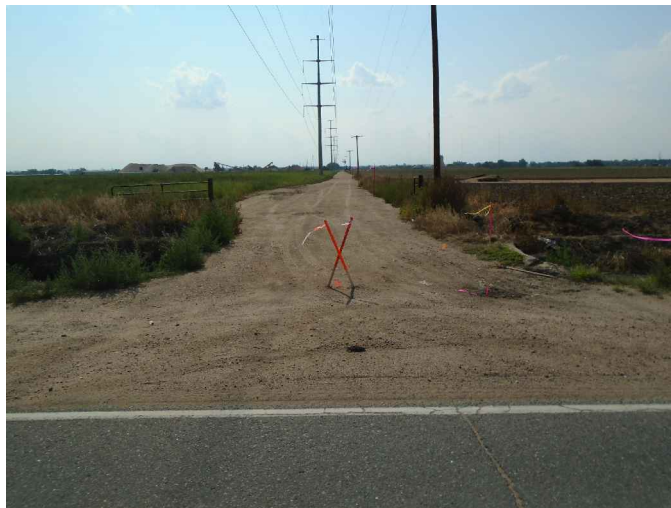
ACCESS POINT PICTURES

SOUTH WELD SWD FACILITY

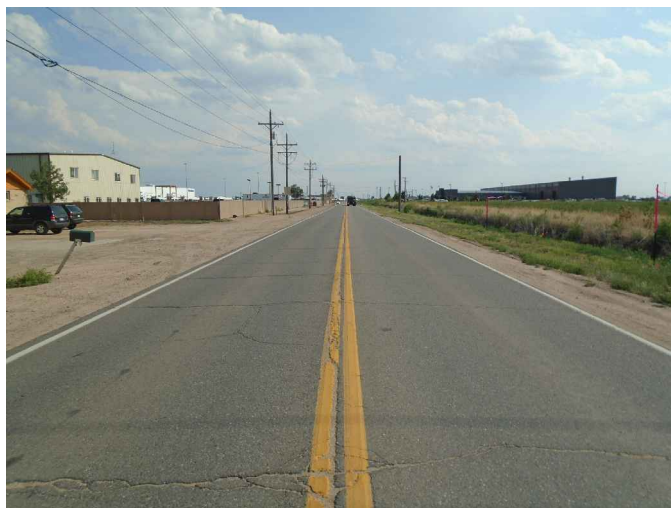
SECTION: 30
TOWNSHIP: 1N
RANGE: 66W
6TH. P.M.
WELD COUNTY, CO
DATE: 8/7/2018



VIEW NORTH (COUNTY ROAD 27)



VIEW WEST



VIEW SOUTH (COUNTY ROAD 27)