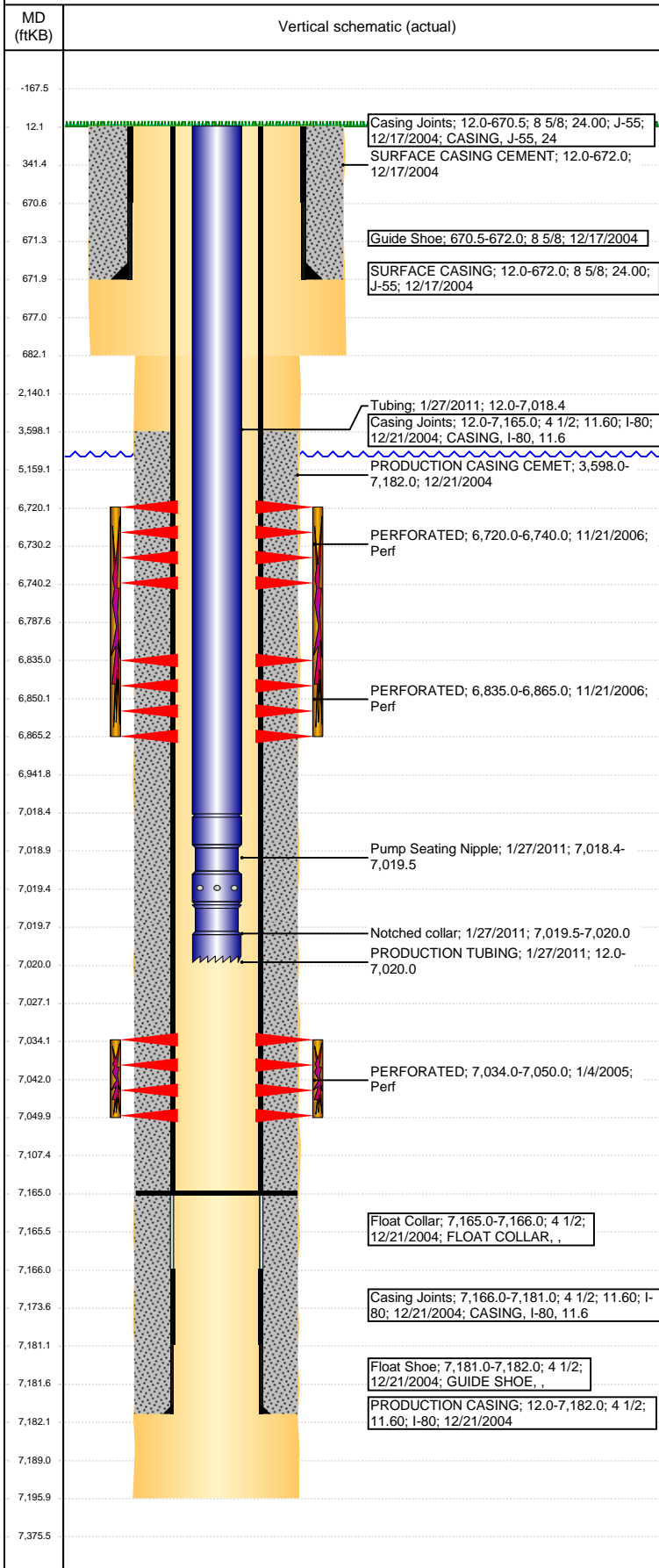


**Well Name: BOULTER 18-34**

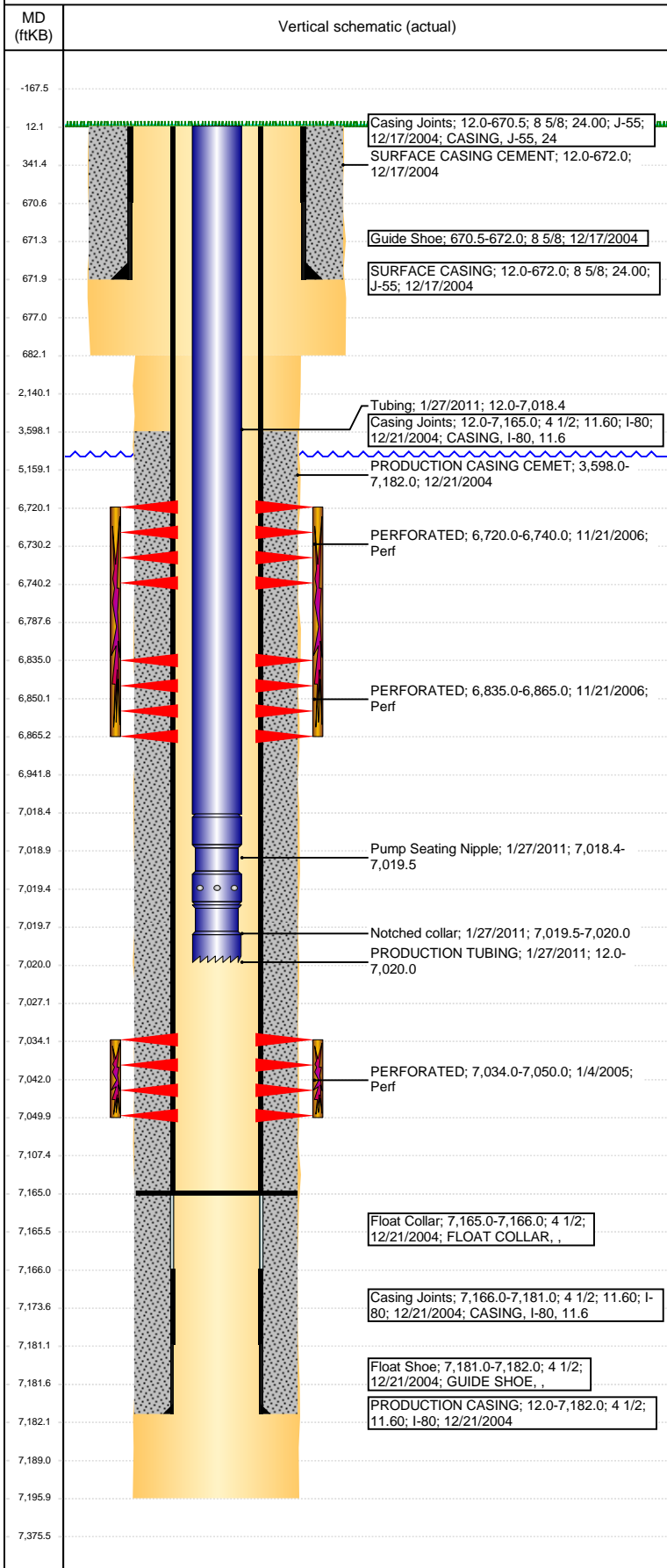
VERTICAL - ORIGINAL HOLE, 6/13/2018 5:06:52 PM



Well Header							
API 05-123-22526		Well Report Center 425857973		Well Configuration Type VERTICAL			
Original KB Elevation (ft) 4,667		KB - GL / MSL (ftKB) 12.00		Spud Date 12/17/2004		P & A Date	
Production Route Watt - A3-02			Well Production Status PR			SoRT Ignore No	
Directions To Well				Actual Latitude (°) 40.35944220		Actual Longitude (°) -104.65413450	
Comment							
Congressional Location							
Quarter 3 C	Quarter 4 NW	Section 34	Township 5	Twnshp N/S Dir N	Range 65	Range E/W Dir W	
Rig Operator							
Rig Operator							
Plug Back Total Depths							
Date	Depth (ftKB)	Method		Com			
1/27/2011	7,165.0	TAG		MOST RECENT CLEANOUT			
Wellbore Sections							
Section Des		Size (in)		Act Top, MD (ftKB)		Act Btm, MD (ftKB)	
SURFACE		12 1/4		12		682	
PRODUCTION		7 7/8		682		7,196	
Zone Statuses							
Zone Name		Status Date			Status		
NIOBRARA		2/7/2011			PR		
CODELL		2/7/2011			PR		
Casing Strings							
SURFACE CASING, 672.0ftKB							
Casing Description	Run Date	OD (in)	Wt/Len (l...	Grade	Top, MD (ft...	MD (ftKB)	
SURFACE CASING	12/17/2004	8 5/8	24.00	J-55	12.0	672.0	
PRODUCTION CASING, 7,182.0ftKB							
Casing Description	Run Date	OD (in)	Wt/Len (l...	Grade	Top, MD (ft...	MD (ftKB)	
PRODUCTION CASING	12/21/2004	4 1/2	11.60	I-80	12.0	7,182.0	
Cement							
Des		Start Date		Top (ftKB)		Btm (ftKB)	
SURFACE CASING CEMENT		12/17/2004		12.0		672.0	
PRODUCTION CASING CEMET		12/21/2004		3,598.0		7,182.0	
Proposed Cement							
Des				Top (ftKB)		Btm (ftKB)	
Tubing Strings							
Tubing Description	Run Date	String...	ID (in)	Wt (lb/ft)	Grade	Len (ft)	Set De...
PRODUCTION TUBING	1/27/2011	2 3/8	2.00	4.70	J-55	7,008.00	
Tubing Components							
Item Des	OD (in)	Wt (lb/ft)	Grade	Jts	Len (ft)	Btm (ftKB)	Btm (TVD) (ftKB)
Tubing	2 3/8	4.70	J-55	218	7,006.40	7,018.4	
Pump Seating Nipple	2 3/8	1.10		1	1.10	7,019.5	
Notched collar	2 3/8			1	0.50	7,020.0	
Other In Hole							
Run Date	Des			OD (in)	Top (ftKB)	Btm (ftKB)	
Proposed Other In Hole							
Des			OD (in)	Top (ftKB)		Btm (ftKB)	
Logs							
Date	Type				Top, MD (ftKB)		Btm, MD (ftKB)
12/23/2004	COMPENSATED NEUTRON				4,150.0		7,176.0
12/23/2004	INDUCTION				672.0		7,196.0
1/4/2005	CEMENT BOND				3,400.0		7,156.0
Perforation Data							
Linked Zone		Sum of Entered Shot Total	Top (ftKB)	Btm (ftKB)		Date	
NIOBRARA, ORIGINAL HOLE		40	6,720.00	6,740.00		11/21/2006	
NIOBRARA, ORIGINAL HOLE		60	6,835.00	6,865.00		11/21/2006	

**Well Name: BOULTER 18-34**

VERTICAL - ORIGINAL HOLE, 6/13/2018 5:06:54 PM



Perforation Data						
Linked Zone	Sum of Entered Shot Total	Top (ftKB)	Btm (ftKB)	Date		
CODELL, ORIGINAL HOLE	64	7,034.00	7,050.00	1/4/2005		
Total (Sum)	164					
Job Supply Amounts						
Supply Item Des	Type	Uni...	Job Category	Total...	Total...	Total...