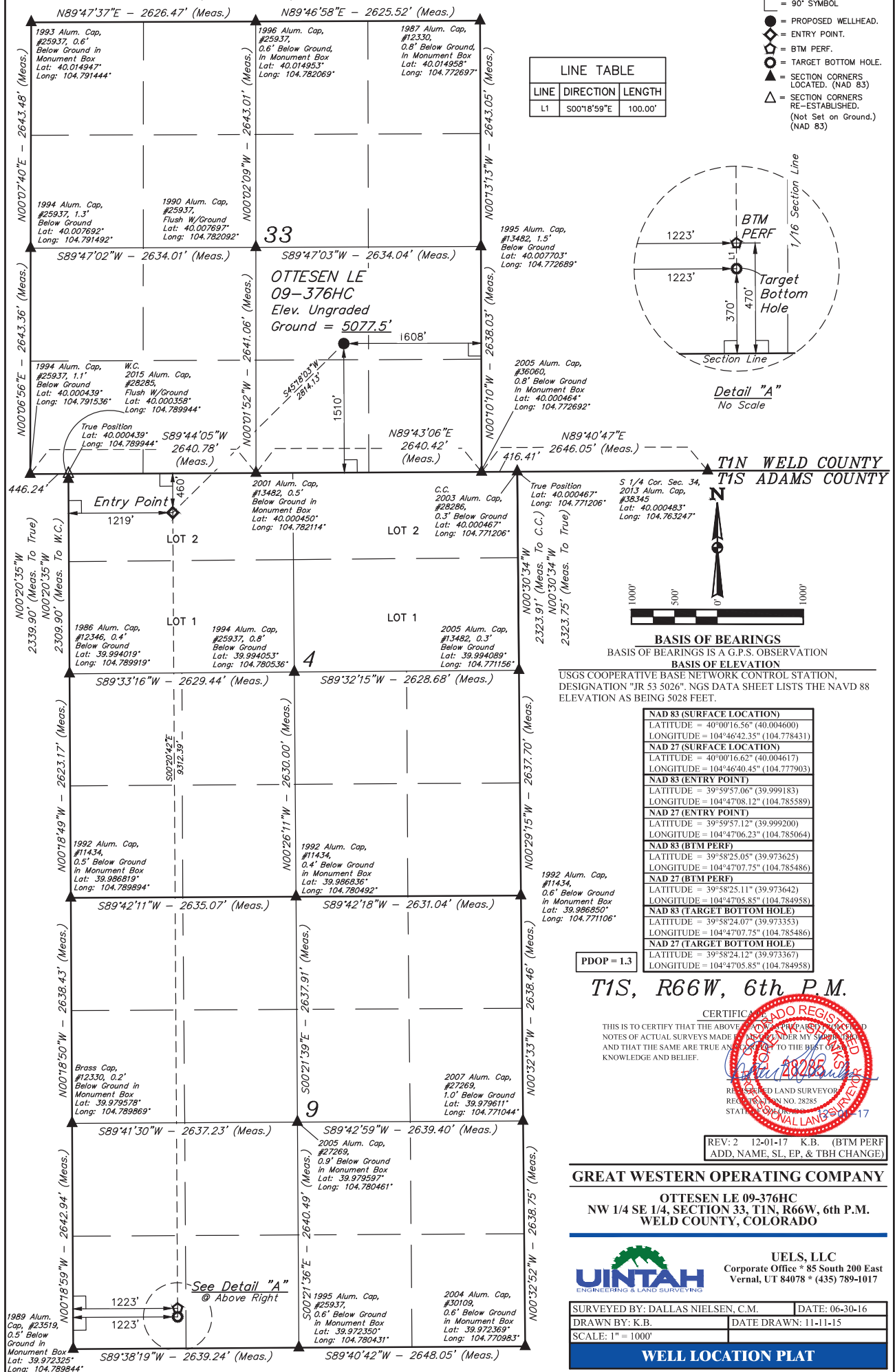
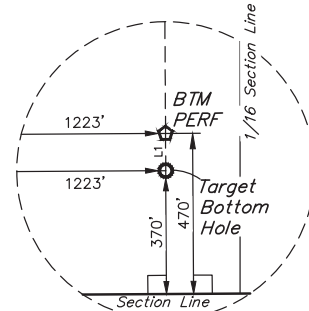


# T1N, R66W, 6th P.M.

## LEGEND:

- = 90° SYMBOL
- = PROPOSED WELLHEAD.
- ◆ = ENTRY POINT.
- = BTM PERF.
- = TARGET BOTTOM HOLE.
- ▲ = SECTION CORNERS LOCATED. (NAD 83)
- △ = SECTION CORNERS RE-ESTABLISHED. (Not Set on Ground.) (NAD 83)

LINE TABLE		
LINE	DIRECTION	LENGTH
L1	S00°18'59"E	100.00'



**BASIS OF BEARINGS**  
BASIS OF BEARINGS IS A G.P.S. OBSERVATION

**BASIS OF ELEVATION**  
USGS COOPERATIVE BASE NETWORK CONTROL STATION, DESIGNATION "JR 53 5026". NGS DATA SHEET LISTS THE NAVD 88 ELEVATION AS BEING 5028 FEET.

NAD 83 (SURFACE LOCATION)	
LATITUDE	= 40°00'16.56" (40.004600)
LONGITUDE	= 104°46'42.35" (104.778431)
NAD 27 (SURFACE LOCATION)	
LATITUDE	= 40°00'16.62" (40.004617)
LONGITUDE	= 104°46'40.45" (104.777903)
NAD 83 (ENTRY POINT)	
LATITUDE	= 39°59'57.06" (39.999183)
LONGITUDE	= 104°47'08.12" (104.785589)
NAD 27 (ENTRY POINT)	
LATITUDE	= 39°59'57.12" (39.999200)
LONGITUDE	= 104°47'06.23" (104.785064)
NAD 83 (BTM PERF)	
LATITUDE	= 39°58'25.05" (39.973625)
LONGITUDE	= 104°47'07.75" (104.785486)
NAD 27 (BTM PERF)	
LATITUDE	= 39°58'25.11" (39.973642)
LONGITUDE	= 104°47'05.85" (104.784958)
NAD 83 (TARGET BOTTOM HOLE)	
LATITUDE	= 39°58'24.07" (39.973353)
LONGITUDE	= 104°47'07.75" (104.785486)
NAD 27 (TARGET BOTTOM HOLE)	
LATITUDE	= 39°58'24.12" (39.973367)
LONGITUDE	= 104°47'05.85" (104.784958)

PDOP = 1.3

## T1S, R66W, 6th P.M.

CERTIFICATE  
THIS IS TO CERTIFY THAT THE ABOVE INFORMATION IS A TRUE AND CORRECT COPY OF THE ORIGINAL SURVEY RECORDS AND THAT THE SAME ARE TRUE AND CORRECT TO THE BEST OF MY KNOWLEDGE AND BELIEF.



REV: 2 12-01-17 K.B. (BTM PERF  
ADD, NAME, SL, EP, & TBH CHANGE)

## GREAT WESTERN OPERATING COMPANY

OTTESEN LE 09-376HC  
NW 1/4 SE 1/4, SECTION 33, T1N, R66W, 6th P.M.  
WELD COUNTY, COLORADO



UELS, LLC  
Corporate Office \* 85 South 200 East  
Vernal, UT 84078 \* (435) 789-1017

SURVEYED BY: DALLAS NIELSEN, C.M.	DATE: 06-30-16
DRAWN BY: K.B.	DATE DRAWN: 11-11-15
SCALE: 1" = 1000'	

## WELL LOCATION PLAT