



Great Western Operating Company, LLC

Location Colorado
Field Wattenburg
Installation Ottesen
Slot N07 - Ottesen LE 09-376HC
Well Ottesen LE 09-376HC
Wellbore Ottesen LE 09-376HC (PWB)

Created by admin
Date plotted 28-Dec-2017

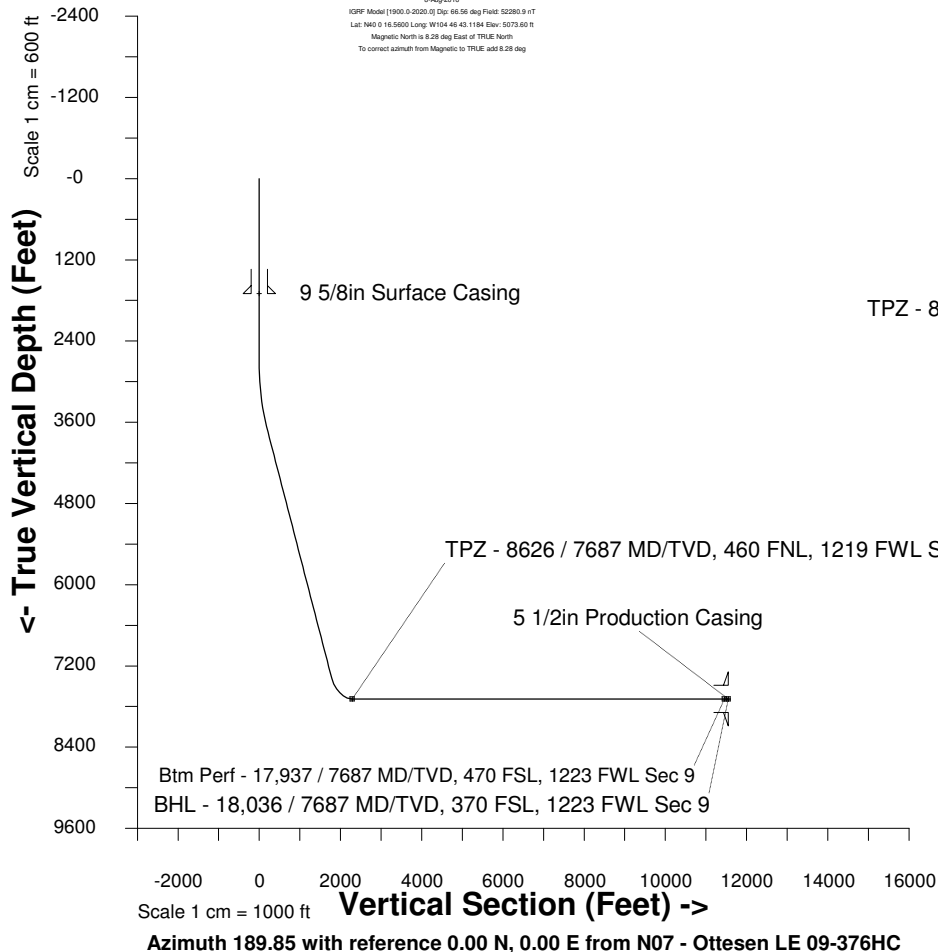
Plot reference is Ottesen LE 09-376HC (PWB).
Ref wellpath is Ottesen LE 09-376HC (PWP#1).
Coordinates are in Feet reference N07 - Ottesen LE 09-376HC.
True Vertical Depths are reference Rig Datum.
Measured Depths are reference Rig Datum.
Rig Datum: Planned Datum #1
Rig Datum to Mean Sea Level: 5093.60 ft.
Plot North is aligned to TRUE North.

Scale 1 cm = 500 ft

East (Feet) ->

-9000 -8000 -7000 -6000 -5000 -4000 -3000 -2000 -1000 -0 1000 2000 3000

9-Aug-2016
IGPP Model [1900.0-2020.0] Dip: 66.56 deg Field: 52280.9 nT
Lat: N40 0 16.5600 Long: W104 46 43.1184 Elev: 5073.60 ft
Magnetic North is 6.28 deg East of TRUE North
To correct azimuth from Magnetic to TRUE, add 6.28 deg



WELL PROFILE DATA

Point	MD	Inc	Azi	TVD	North	East	deg/100ft	V. Sect
Tie on	0.00	0.00	0.00	0.00	S 0.00	W 0.00		-0.00
KOP	2735.00	0.00	231.52	2735.00	S 0.00	W 0.00	0.00	-0.00
End of Build	3734.94	30.00	231.52	3689.88	S 159.21	W 200.27	9.84	191.14
End of Hold	7972.29	30.00	231.52	7359.60	S 1477.60	W 1858.62	0.00	1773.90
Target TPZ - ... Sec 4	8626.32	90.00	179.83	7687.00	S 1973.26	W 2005.44	36.09	2287.38
Target Btm Pe... Sec 9	17936.80	90.00	179.83	7687.00	S 11283.70	W 1977.32	0.00	11455.63
End of Turn	17938.43	90.00	180.01	7687.00	S 11285.33	W 1977.32	36.09	11457.23
T.D. & Target BHL...c 9	18035.89	90.00	180.01	7687.00	S 11382.78	W 1977.33	0.00	11553.25

