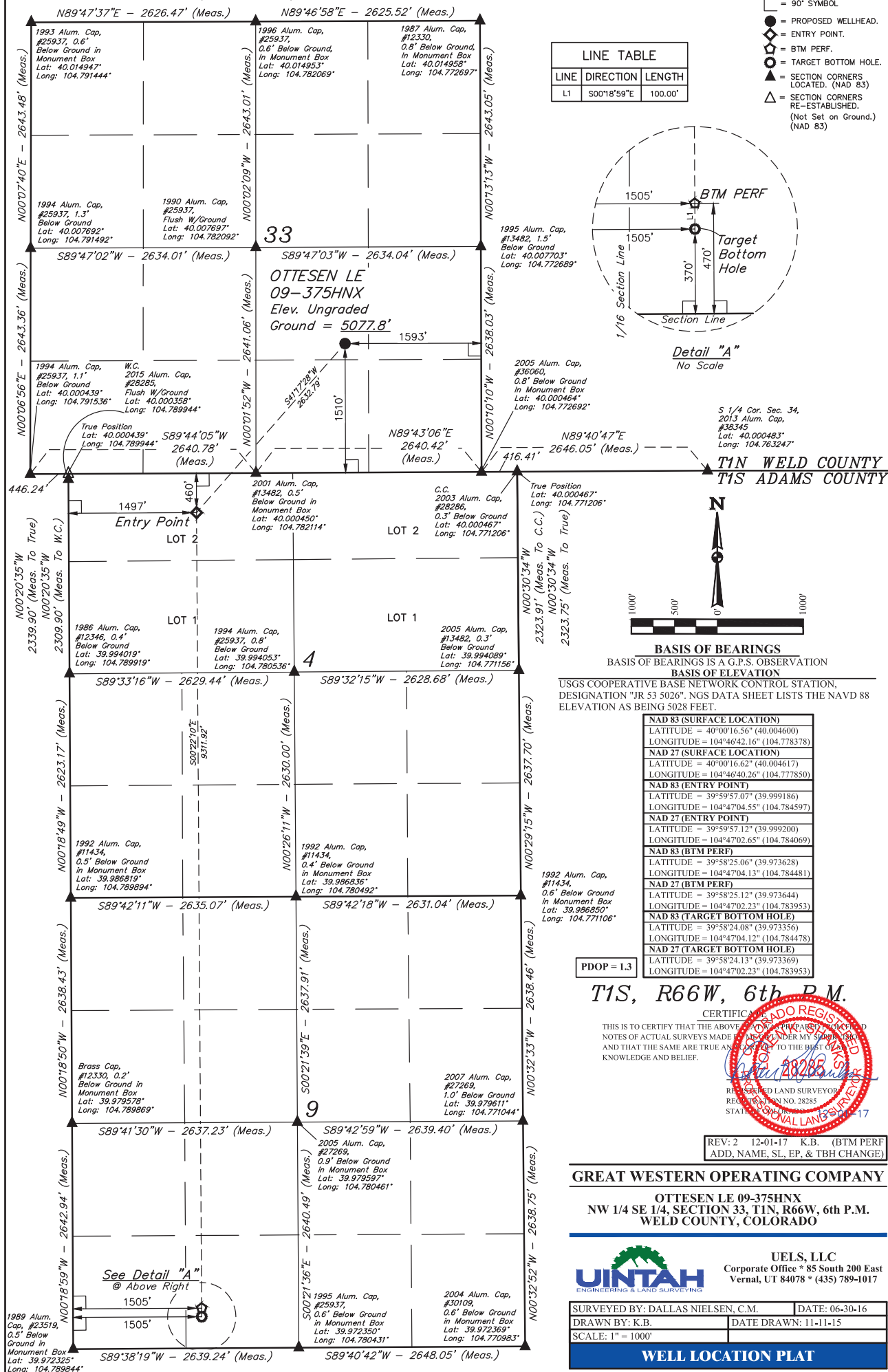
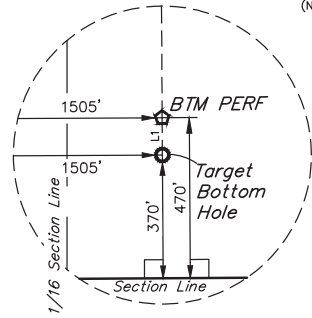


T1N, R66W, 6th P.M.



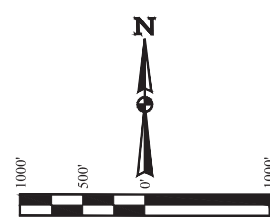
- LEGEND:**
- 90° SYMBOL
 - PROPOSED WELLHEAD
 - ENTRY POINT
 - BTM PERF
 - TARGET BOTTOM HOLE
 - SECTION CORNERS LOCATED (NAD 83)
 - SECTION CORNERS RE-ESTABLISHED (Not Set on Ground.) (NAD 83)

LINE TABLE		
LINE	DIRECTION	LENGTH
L1	S00°18'59"E	100.00'



Detail "A"
No Scale

S 1/4 Cor. Sec. 34,
2013 Alum. Cap.
#38345
Lat: 40.000483°
Long: 104.763247°



BASIS OF BEARINGS
BASIS OF BEARINGS IS A G.P.S. OBSERVATION
BASIS OF ELEVATION
USGS COOPERATIVE BASE NETWORK CONTROL STATION,
DESIGNATION "JR S3 5026", NGS DATA SHEET LISTS THE NAVD 88
ELEVATION AS BEING 5028 FEET

NAD 83 (SURFACE LOCATION)	
LATITUDE	= 40°00'16.56" (40.004600)
LONGITUDE	= 104°46'42.16" (104.778378)
NAD 27 (SURFACE LOCATION)	
LATITUDE	= 40°00'16.62" (40.004617)
LONGITUDE	= 104°46'40.26" (104.777850)
NAD 83 (ENTRY POINT)	
LATITUDE	= 39°59'57.07" (39.999186)
LONGITUDE	= 104°47'04.55" (104.784597)
NAD 27 (ENTRY POINT)	
LATITUDE	= 39°59'57.12" (39.999200)
LONGITUDE	= 104°47'02.65" (104.784069)
NAD 83 (BTM PERF)	
LATITUDE	= 39°58'25.06" (39.973628)
LONGITUDE	= 104°47'04.13" (104.784481)
NAD 27 (BTM PERF)	
LATITUDE	= 39°58'25.12" (39.973644)
LONGITUDE	= 104°47'02.23" (104.783953)
NAD 83 (TARGET BOTTOM HOLE)	
LATITUDE	= 39°58'24.08" (39.973356)
LONGITUDE	= 104°47'04.12" (104.784478)
NAD 27 (TARGET BOTTOM HOLE)	
LATITUDE	= 39°58'24.13" (39.973369)
LONGITUDE	= 104°47'02.23" (104.783953)

PDOP = 1.3

T1S, R66W, 6th P.M.

CERTIFICATE
THIS IS TO CERTIFY THAT THE ABOVE MONUMENTS AND NOTES OF ACTUAL SURVEYS MADE BY ME UNDER MY SUPERVISION AND THAT THE SAME ARE TRUE AND CORRECT TO THE BEST OF MY KNOWLEDGE AND BELIEF.



REV: 2 12-01-17 K.B. (BTM PERF
ADD, NAME, SL, EP, & TBH CHANGE)

GREAT WESTERN OPERATING COMPANY

OTTESEN LE 09-375HNX
NW 1/4 SE 1/4, SECTION 33, T1N, R66W, 6th P.M.
WELD COUNTY, COLORADO



UELS, LLC
Corporate Office * 85 South 200 East
Vernal, UT 84078 * (435) 789-1017

SURVEYED BY: DALLAS NIELSEN, C.M.	DATE: 06-30-16
DRAWN BY: K.B.	DATE DRAWN: 11-11-15
SCALE: 1" = 1000'	

WELL LOCATION PLAT