



Great Western Operating Company, LLC

Location Colorado
Field Wattenburg
Installation Ottesen
Slot N10 - Ottesen LE 09-373HN
Well Ottesen LE 09-373HN
Wellbore Ottesen LE 09-373HN (PWB)

Created by admin
Date plotted 28-Dec-2017

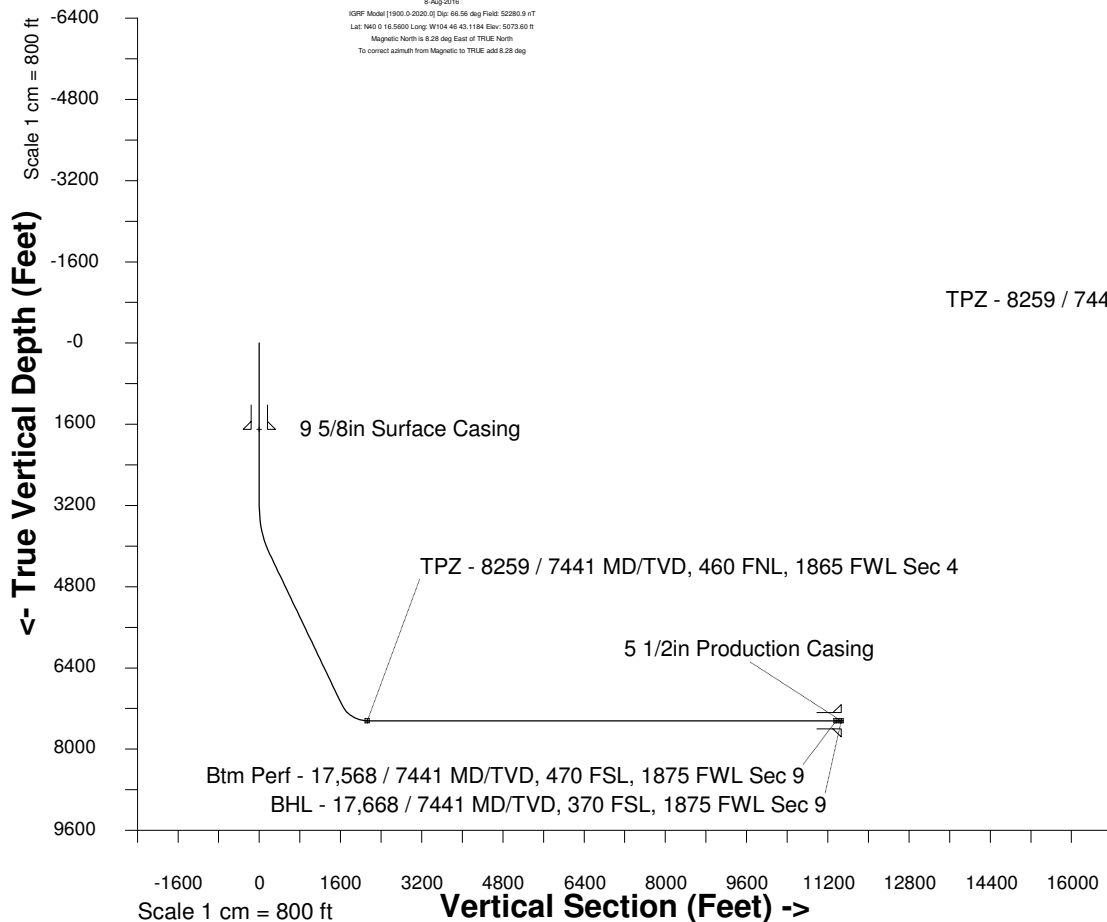
Plot reference is Ottesen LE 09-373HN (PWB).
Ref wellpath is Ottesen LE 09-373HN (PWP#1).
Coordinates are in Feet reference N10 - Ottesen LE 09-373HN.
True Vertical Depths are reference Rig Datum.
Measured Depths are reference Rig Datum.
Rig Datum: Planned Datum #1
Rig Datum to Mean Sea Level: 5093.60 ft.
Plot North is aligned to TRUE North.

Scale 1 cm = 500 ft

East (Feet) ->

-9000 -8000 -7000 -6000 -5000 -4000 -3000 -2000 -1000 -0 1000 2000 3000

8-Aug-2016
IGPP Model (1900.0-2020.0) Dip: 66.56 deg Field: 52280.9 nT
Lat: N40 0 16.5600 Long: W104 46 43.1184 Elev: 5073.60 ft
Magnetic North is 8.28 deg East of TRUE North
To correct azimuth from Magnetic to TRUE, add 8.28 deg



Azimuth 186.87 with reference 0.00 N, 0.00 E from N10 - Ottesen LE 09-373HN

WELL PROFILE DATA

Point	MD	Inc	Azi	TVD	North	East	deg/100ft	V. Sect
Tie on	0.00	0.00	0.00	0.00	S 0.00	W 0.00		-0.00
KOP	3212.00	0.00	220.93	3212.00	S 0.00	W 0.00	0.00	-0.00
End of Build	4212.09	30.00	220.93	4167.00	S 193.36	W 167.64	9.84	212.01
End of Hold	7642.16	30.00	220.93	7137.46	S 1489.28	W 1291.21	0.00	1632.95
Target TPZ - ... Sec 4	8259.21	90.00	179.79	7441.00	S 1972.21	W 1404.76	36.09	2125.99
Target Btm Pe... Sec 9	17567.89	90.00	179.79	7441.00	S 11280.83	W 1371.09	0.00	11363.84
End of Turn	17570.38	90.00	179.52	7441.00	S 11283.32	W 1371.08	36.09	11366.31
T.D. & Target BHL...c 9	17668.07	90.00	179.52	7441.00	S 11381.00	W 1370.26	0.00	11463.20

