

1001 Noble Energy Way  
Houston, TX 77070

Tel: 281.876.3100  
www.nobleenergyinc.com



August 21, 2018

Colorado Oil and Gas Conservation Commission  
The Chancery Building  
1120 Lincoln Street, Suite 801  
Denver, CO 80203  
Attn: Ms. Julie Murphy, Director

RE: **30 Day Certification Letter – 318A.e**  
Wells Ranch State AA36-673 (Doc No. 401636997)  
PSU: T6N-R62W, 6th P.M., Sec. 31: N/2, Sec. 32: W/2NW/4, T6N-R63W, 6th P.M., Sec. 35:  
E/2NE/4, Sec. 36: N/2  
SHL: Section: 32 SWNW, T6N, R62W, 6<sup>th</sup> P.M.  
Weld County, Colorado

Dear Director,

Noble Energy, Inc. ("NEI") is planning to drill the captioned boundary well in accordance with the provisions of COGCC Rule 318A.e.

NEI's proposed wellbore spacing unit, captured in the above section, is for the Niobrara formation. NEI owns 100% of the mineral operating rights within the proposed wellbore spacing unit and therefore NEI hereby attests that no notice letters are required under the COGCC Rule 318A.e(5).

Enclosed is a copy of the document to assist you in your review and approval of NEI's proposed APD for the captioned well.

- Plat illustrating proposed wellbore spacing unit.

If you have any questions or issues regarding this permit, please contact me at 281-943-1940 or [brittany.mcfadden@nblenergy.com](mailto:brittany.mcfadden@nblenergy.com).

Respectfully,

A handwritten signature in cursive script that reads 'Brittany McFadden'.

Regulatory Analyst  
Noble Energy Inc.

# Wells Ranch State AA36-673

Proposed Spacing Unit – Noble Energy, Inc

Township 6 North, Range 62 West, 6<sup>th</sup> P.M.

Section 31: N/2; Section 32: W/2NW/4

Township 6 North, Range 63 West, 6<sup>th</sup> P.M.

Section 35: E/2NE/4; Section 36: N/2



Legend



Proposed 799.92± acre spacing unit



Bottom Hole Location



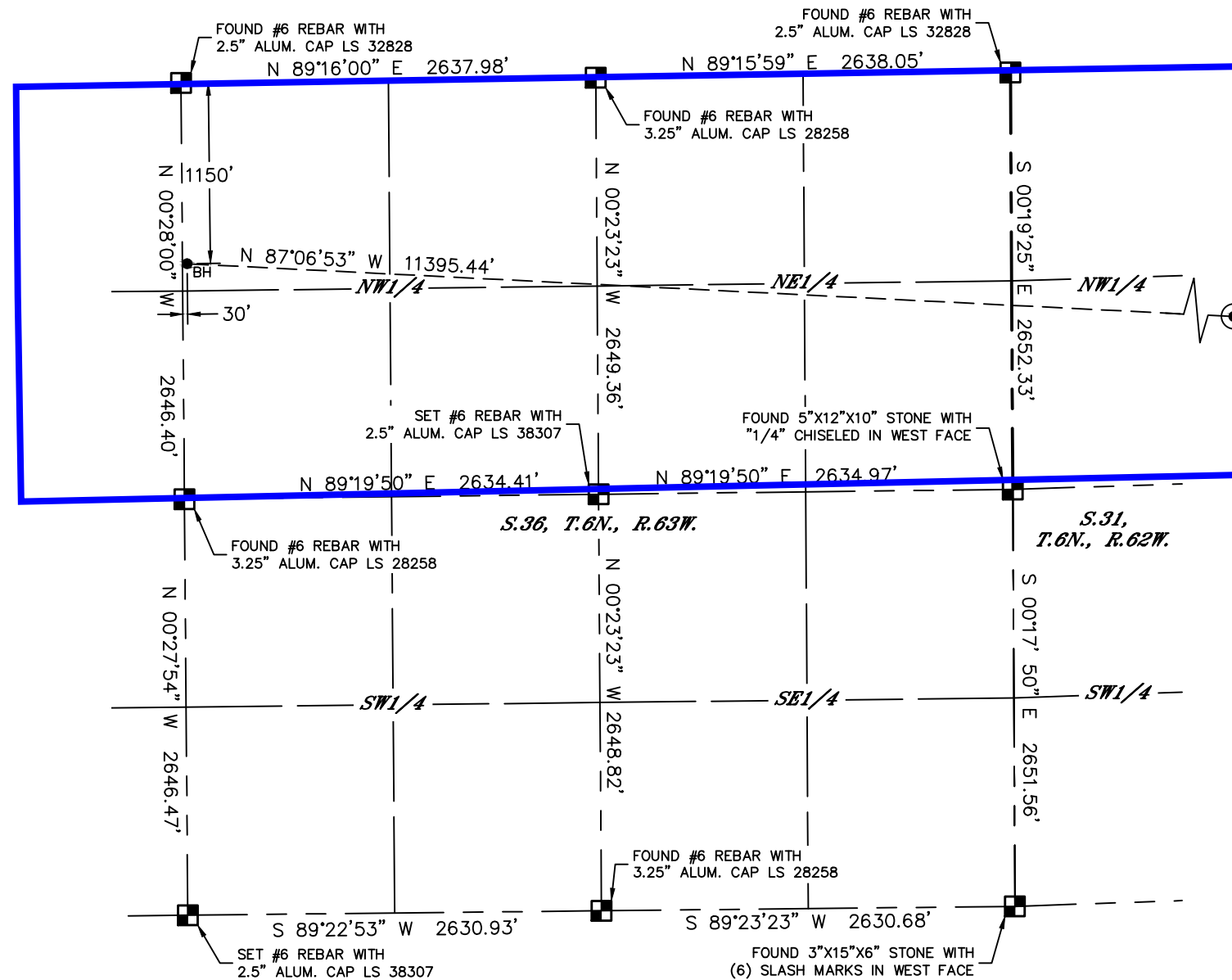


Lat40, Inc. 6250 W. 10th Street, Unit 2, Greeley, CO 970-515-5294

# WELL LOCATION CERTIFICATE

WELLS RANCH STATE AA36-673

SECTION: 32  
TOWNSHIP: 6N  
RANGE: 62W  
6TH. P.M.  
WELD COUNTY, CO

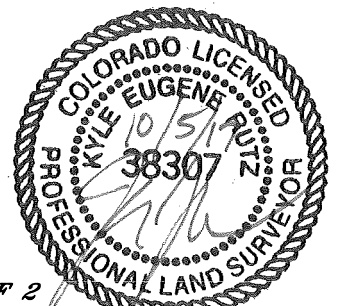
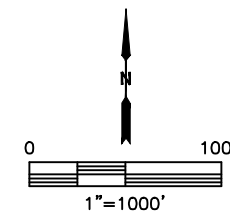


**NOTE:**

- 1) Bearings shown are Grid Bearings of the Colorado State Plane Coordinate System, North Zone, North American Datum 1983. The lineal dimensions as contained herein are based upon the "U.S. Survey Foot."
- 2) Distances to section lines measured at 90 degrees from said section lines.
- 3) Ground elevations are based on an observed GPS elevation (NAVD 1988 DATUM).
- 4) Latitude and Longitude shown are (NAD 83 DATUM).
- 5) IMPROVEMENTS: See LOCATION DRAWING for all visible improvements within 500' of oil and gas location.
- 6) This map does not represent a boundary survey.

**LEGEND**

- = ALIQUOT MONUMENT AS DESCRIBED
- = CALCULATED POSITION
- ⊙ = SURFACE HOLE LOCATION (SHL)
- ▲ = ENTRY POINT LOCATION (EP)
- = BOTTOM HOLE LOCATION (BHL)
- ⊕ = EXISTING WELL
- ⊖ = ABANDONED WELL



**SHEET 2 OF 2**  
 Kyle E. Rutz—On behalf of Lat40, Inc.  
 Colorado Licensed Professional Land Surveyor No. 38307  
 DATE: 10/5/2017  
 PROJECT#: 2017065