

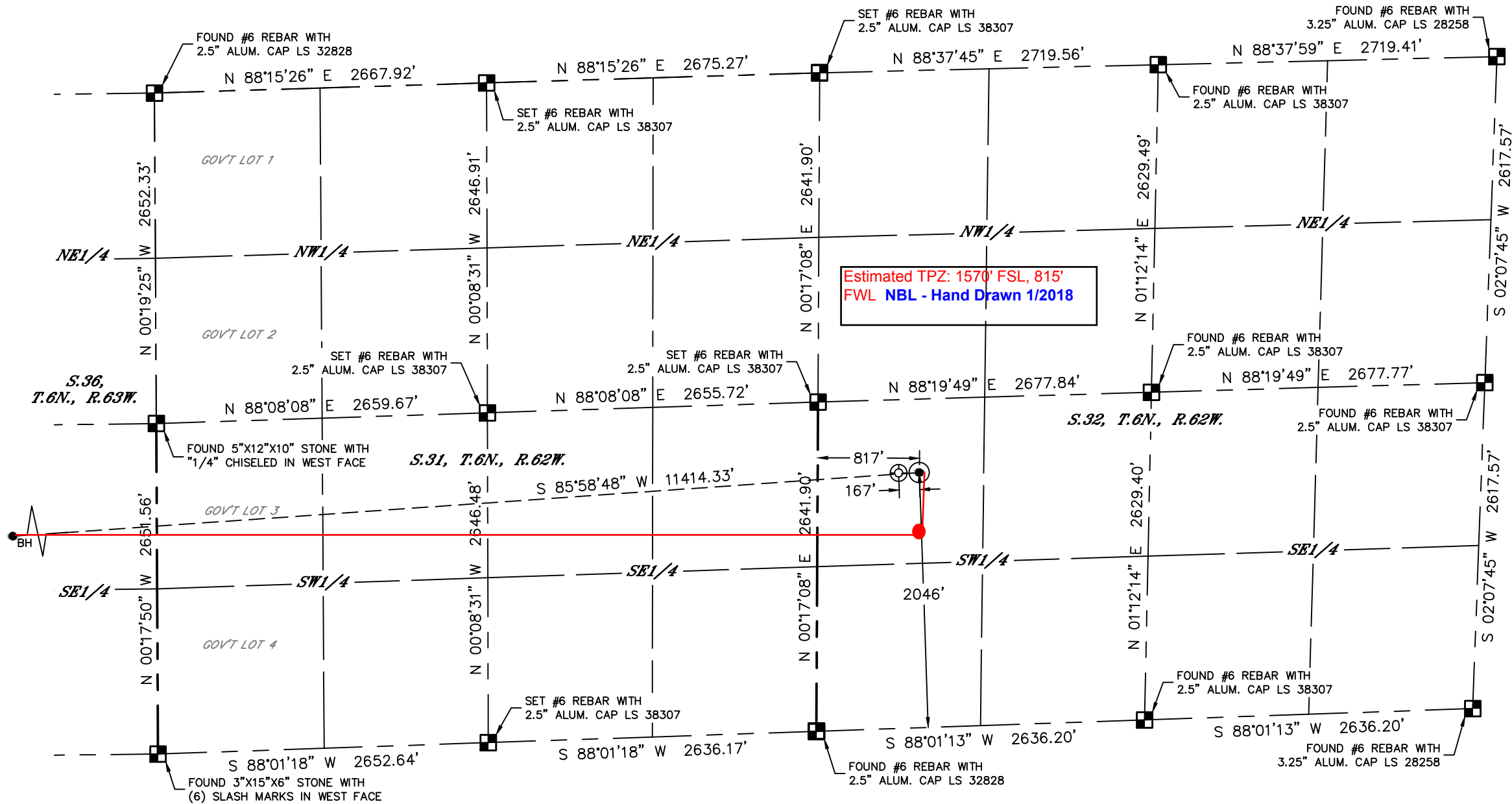


Lat40°, Inc. 6250 W. 10th Street, Unit 2, Greeley, CO 970-515-5294

WELL LOCATION CERTIFICATE

WELLS RANCH STATE AA36-633

SECTION: 32  
TOWNSHIP: 6N  
RANGE: 62W  
6TH. P.M.  
WELD COUNTY, CO



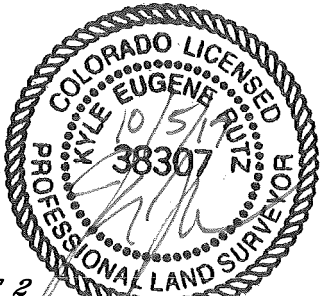
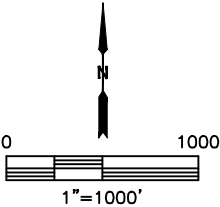
**APPROVED**  
By John Fink at 8:43 am, Jan 11, 2018

CLIENT: NOBLE ENERGY, INC.				LANDMAN: GREG WILSON			
INSTRUMENT OPERATOR: DAVID BRANDON				SURVEY DATE: 8/8/2017		SURFACE USE: RANGELAND	
SHL FOOTAGE		SHL LAT°	SHL LONG°	SHL PDOP	SHL ELEV (FT.)	SHL 1/4/1/4	SHL S-T-R
2046	FSL	817	FWL	40.44158	-104.35380	1.9	4726
						NWSW	32-6-62

BHL FOOTAGE		BHL LAT°	BHL LONG°	BHL S-T-R
1515	FSL	0	FWL	40.43978
				-104.39473
				36-6-63

NOTE:  
1) Bearings shown are Grid Bearings of the Colorado State Plane Coordinate System, North Zone, North American Datum 1983. The lineal dimensions as contained herein are based upon the "U.S. Survey Foot."  
2) Distances to section lines measured at 90 degrees from said section lines.  
3) Ground elevations are based on an observed GPS elevation (NAVD 1988 DATUM).  
4) Latitude and Longitude shown are (NAD 83 DATUM).  
5) IMPROVEMENTS: See LOCATION DRAWING for all visible improvements within 500' of oil and gas location.  
6) This map does not represent a boundary survey.

- LEGEND
- = ALIQUOT MONUMENT AS DESCRIBED
  - = CALCULATED POSITION
  - = SURFACE HOLE LOCATION (SHL)
  - ▲ = ENTRY POINT LOCATION (EP)
  - = BOTTOM HOLE LOCATION (BHL)
  - ⊙ = EXISTING WELL
  - ⊙ = ABANDONED WELL



**SHEET 1 OF 2**  
Kyle E. Rutz—On behalf of Lat40°, Inc.  
Colorado Licensed Professional Land Surveyor No. 38307  
DATE: 10/5/2017  
PROJECT#: 2017065

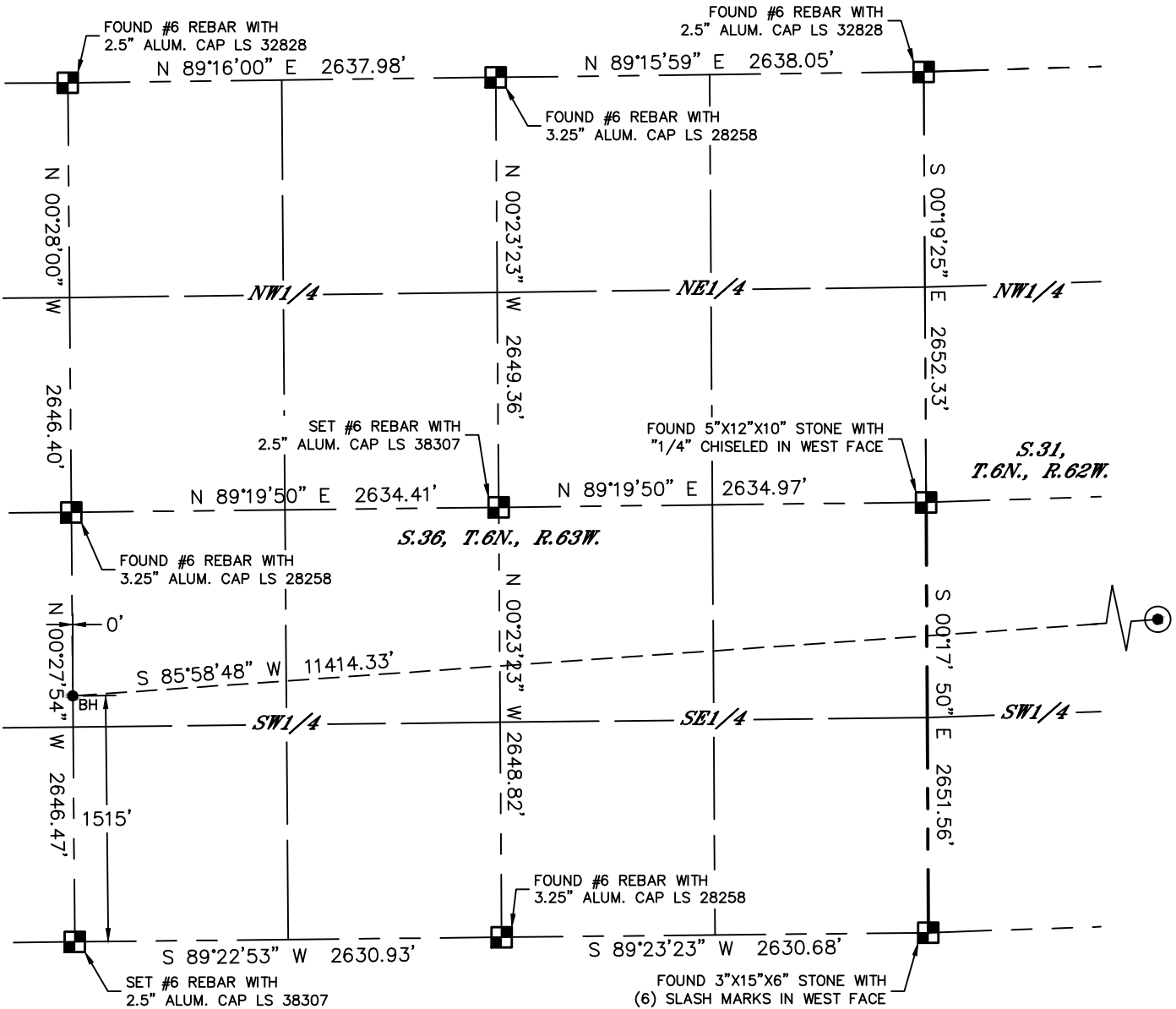


Lat40°, Inc. 6250 W. 10th Street, Unit 2, Greeley, CO 970-515-5294

# WELL LOCATION CERTIFICATE

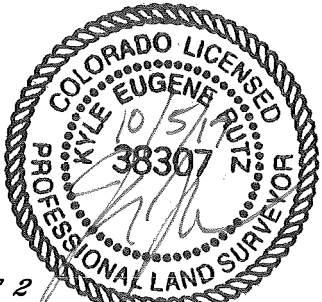
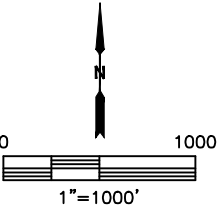
WELLS RANCH STATE AA36-633

SECTION: 32  
TOWNSHIP: 6N  
RANGE: 62W  
6TH. P.M.  
WELD COUNTY, CO



NOTE:  
1) Bearings shown are Grid Bearings of the Colorado State Plane Coordinate System, North Zone, North American Datum 1983. The lined dimensions as contained herein are based upon the "U.S. Survey Foot."  
2) Distances to section lines measured at 90 degrees from said section lines.  
3) Ground elevations are based on an observed GPS elevation (NAVD 1988 DATUM).  
4) Latitude and Longitude shown are (NAD 83 DATUM).  
5) IMPROVEMENTS: See LOCATION DRAWING for all visible improvements within 500' of oil and gas location.  
6) This map does not represent a boundary survey.

LEGEND  
■ = ALIQUOT MONUMENT AS DESCRIBED  
○ = CALCULATED POSITION  
● = SURFACE HOLE LOCATION (SHL)  
▲ = ENTRY POINT LOCATION (EP)  
● BH = BOTTOM HOLE LOCATION (BHL)  
⊙ = EXISTING WELL  
⊙ = ABANDONED WELL



**SHEET 2 OF 2**  
Kyle E. Rutz—On behalf of Lat40°, Inc.  
Colorado Licensed Professional Land Surveyor No. 38307  
DATE: 10/5/2017  
PROJECT#: 2017065