



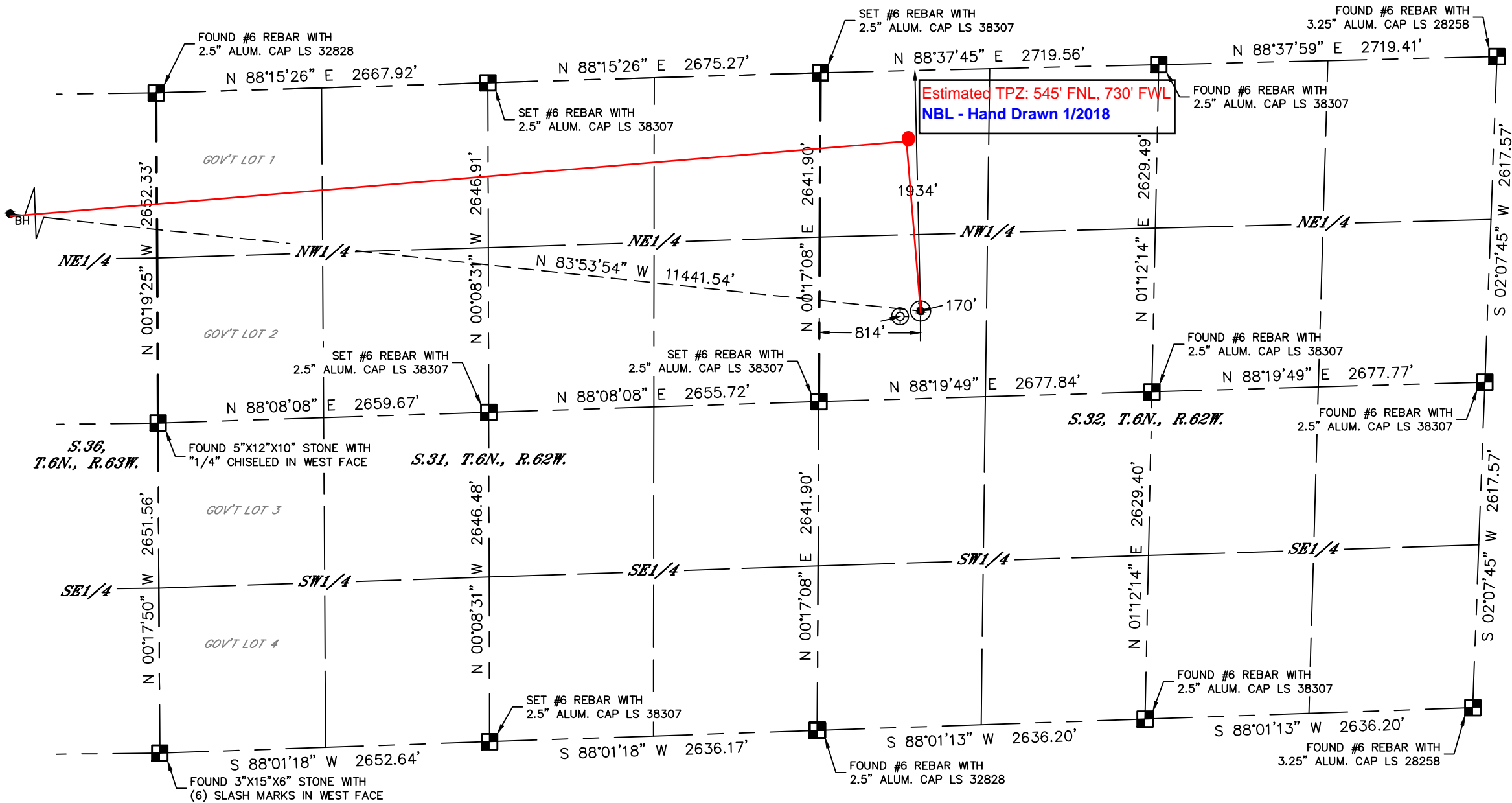
Lat40°, Inc. 6250 W. 10th Street, Unit 2, Greeley, CO 970-515-5294

WELL LOCATION CERTIFICATE

WELLS RANCH STATE AA36-683

SECTION: 32
TOWNSHIP: 6N
RANGE: 62W
6TH. P.M.
WELD COUNTY, CO

APPROVED
By John Fink at 9:07 am, Jan 11, 2018

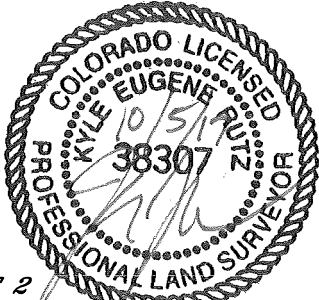
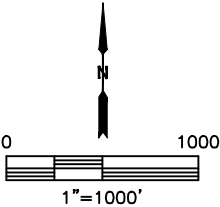


CLIENT: NOBLE ENERGY, INC.				LANDMAN: GREG WILSON			
INSTRUMENT OPERATOR: DAVID BRANDON				SURVEY DATE: 10/4/2017		SURFACE USE: RANGELAND	
SHL FOOTAGE				SHL LAT°	SHL LONG°	SHL PDOP	SHL ELEV (FT.)
1934	FNL	814	FWL	40.44513	-104.35373	2.3	4732
				SHL 1/4/1/4		SHL S-T-R	
				SWNW		32-6-62	

BHL FOOTAGE				BHL LAT°	BHL LONG°	BHL S-T-R
470	FNL	40	FWL	40.44886	-104.39454	36-6-63

NOTE:
1) Bearings shown are Grid Bearings of the Colorado State Plane Coordinate System, North Zone, North American Datum 1983. The lineal dimensions as contained herein are based upon the "U.S. Survey Foot."
2) Distances to section lines measured at 90 degrees from said section lines.
3) Ground elevations are based on an observed GPS elevation (NAVD 1988 DATUM).
4) Latitude and Longitude shown are (NAD 83 DATUM).
5) IMPROVEMENTS: See LOCATION DRAWING for all visible improvements within 500' of oil and gas location.
6) This map does not represent a boundary survey.

LEGEND
■ = ALIQUOT MONUMENT AS DESCRIBED
○ = CALCULATED POSITION
● = SURFACE HOLE LOCATION (SHL)
▲ = ENTRY POINT LOCATION (EP)
● BH = BOTTOM HOLE LOCATION (BHL)
⊙ = EXISTING WELL
⊙ = ABANDONED WELL



SHEET 1 OF 2
Kyle E. Rutz—On behalf of Lat40°, Inc.
Colorado Licensed Professional Land Surveyor No. 38307
DATE: 10/5/2017
PROJECT#: 2017065

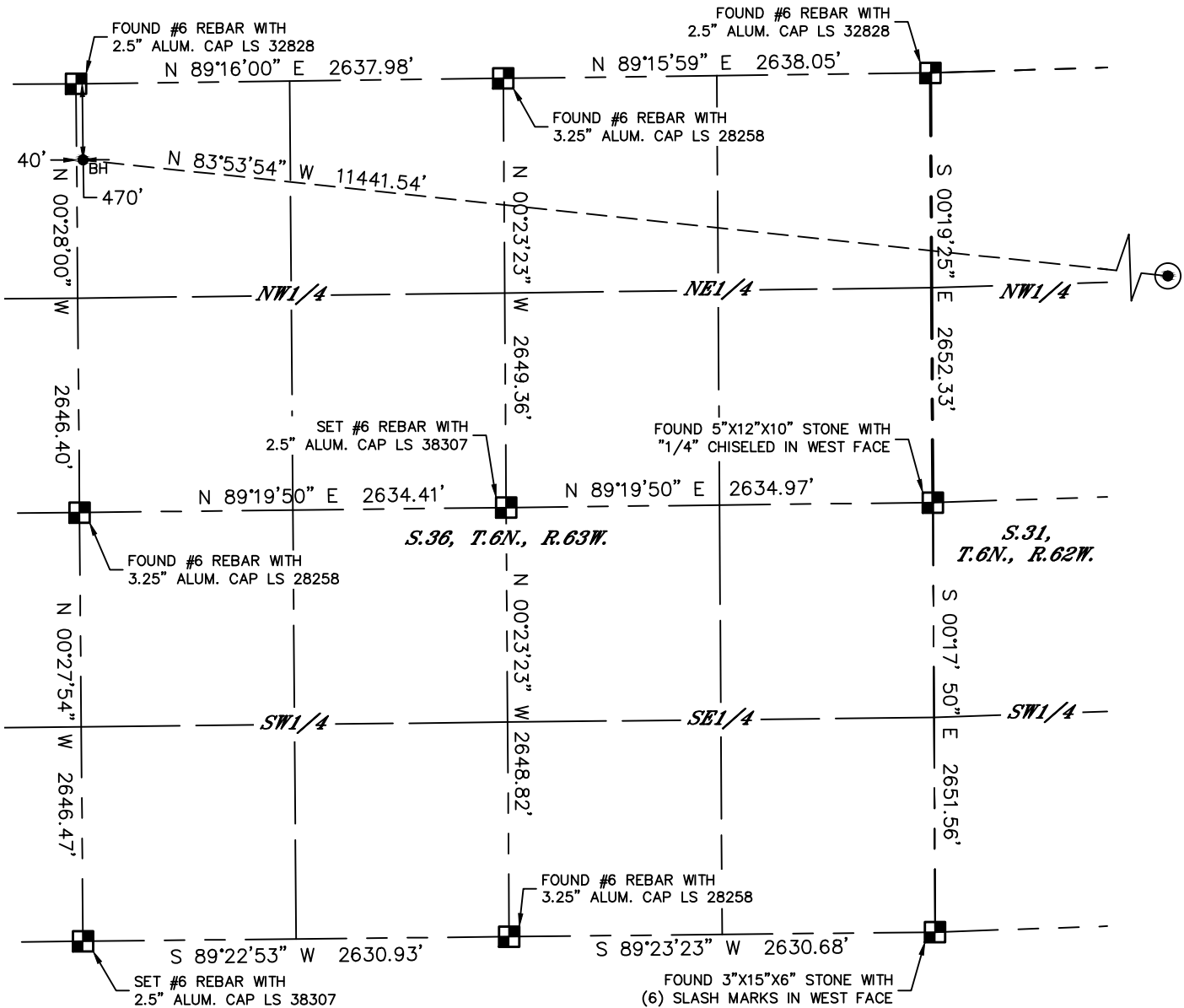


Lat40°, Inc. 6250 W. 10th Street, Unit 2, Greeley, CO 970-515-5294

WELL LOCATION CERTIFICATE

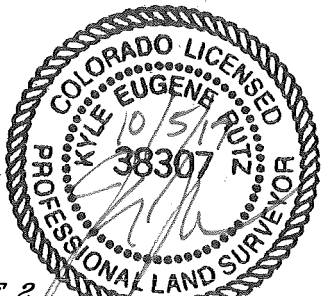
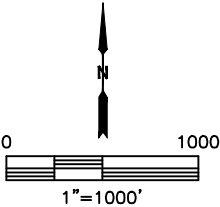
WELLS RANCH STATE AA36-683

SECTION: 32
TOWNSHIP: 6N
RANGE: 62W
6TH. P.M.
WELD COUNTY, CO



NOTE:
1) Bearings shown are Grid Bearings of the Colorado State Plane Coordinate System, North Zone, North American Datum 1983. The lineal dimensions as contained herein are based upon the "U.S. Survey Foot."
2) Distances to section lines measured at 90 degrees from said section lines.
3) Ground elevations are based on an observed GPS elevation (NAVD 1988 DATUM).
4) Latitude and Longitude shown are (NAD 83 DATUM).
5) IMPROVEMENTS: See LOCATION DRAWING for all visible improvements within 500' of oil and gas location.
6) This map does not represent a boundary survey.

LEGEND
■ = ALIQUOT MONUMENT AS DESCRIBED
○ = CALCULATED POSITION
⊙ = SURFACE HOLE LOCATION (SHL)
▲ = ENTRY POINT LOCATION (EP)
●BH = BOTTOM HOLE LOCATION (BHL)
⊕ = EXISTING WELL
⊖ = ABANDONED WELL



SHEET 2 OF 2
Kyle E. Rutz—On behalf of Lat40°, Inc.
Colorado Licensed Professional Land Surveyor No. 38307
DATE: 10/5/2017
PROJECT#: 2017065