

KERR-MCGEE OIL & GAS ONSHORE LP (WA)



COLORADO Slot: SLOT#28 ZELDA 25-5HZ(373'FNL & 1219'FWL,SEC.25)

Field: WELD COUNTY (UTM/TRUE NORTH) Well: ZELDA 25-5HZ

Facility: SEC.25-T2N-R65W Wellbore: ZELDA 25-5HZ ST01 PWB

Plot reference wellpath is ZELDA 25-5HZ ST01 PWP Rev-B.0
 True vertical depths are referenced to Xtreme 22 (17) (RT)
 Measured depths are referenced to Xtreme 22 (17) (RT)
 Xtreme 22 (17) (RT) to Mean Sea Level: 4920 feet
 Mean Sea Level to Mud line (At Slot: SLOT#28 ZELDA 25-5HZ(373'FNL & 1219'FWL,SEC.25)): 0 feet
 Coordinates are in feet referenced to Slot
 Grid System: NAD83 / UTM Zone 13 North, US feet
 * = Wellpath was transformed from a different geodetic datum
 North Reference: True north
 Scale: True distance
 Depths are in feet
 Created by: painsett on 2018-08-24
 Database: WA_DEN Anadarko_Defn

Location Information

Facility Name	Grid East (US ft)	Grid North (US ft)	Latitude	Longitude
SEC.25-T2N-R65W	1751006.903	14569038.086	40°05'55.800"N	104°36'15.984"W
Slot	Local N (ft)	Local E (ft)	Grid East (US ft)	Grid North (US ft)
SLOT#28 ZELDA 25-5HZ(373'FNL & 1219'FWL,SEC.25)	84.05	-3620.90	1747387.074	14569106.003
Xtreme 22 (17) (RT) to Mud line (At Slot: SLOT#28 ZELDA 25-5HZ(373'FNL & 1219'FWL,SEC.25))	4920ft			
Mean Sea Level to Mud line (At Slot: SLOT#28 ZELDA 25-5HZ(373'FNL & 1219'FWL,SEC.25))	0ft			
Xtreme 22 (17) (RT) to Mean Sea Level	4920ft			

Survey Program

Start MD (ft)	End MD (ft)	Tool	Model	Log Name/Comment	Wellbore
17.00	1773.00	ISCWSA MWD, Rev. 2	Custom APC_ISCWSA REV 2 MWD+IFR1 (approximation)		ZELDA 25-5HZ AWB
1773.00	4014.00	ISCWSA MWD, Rev. 2	Custom APC_ISCWSA REV 2 MWD+IFR1+MSA (approximation)		ZELDA 25-5HZ AWB
4014.00	17638.75	ISCWSA MWD, Rev. 2	Custom APC_ISCWSA REV 2 MWD+IFR1+MSA (approximation)		ZELDA 25-5HZ ST01 PWB

Targets

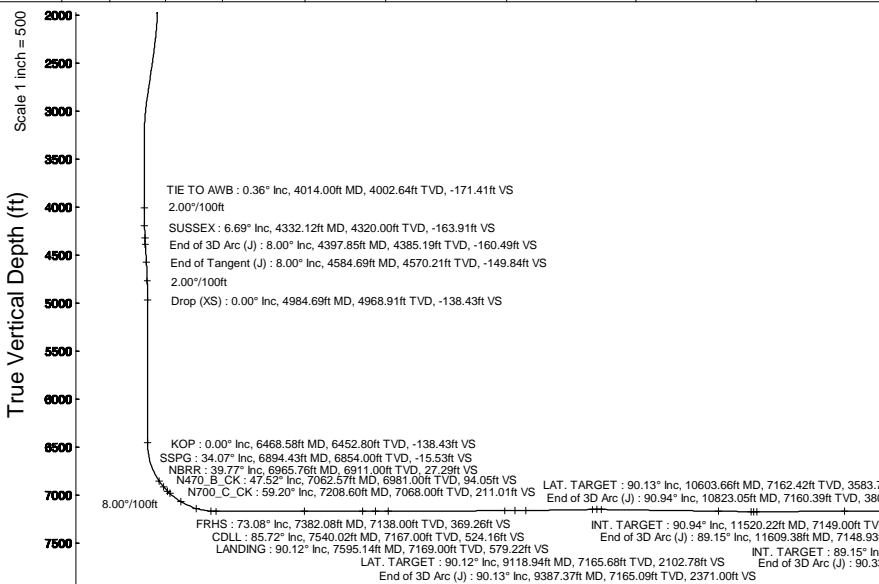
Name	MD (ft)	TVD (ft)	Local N (ft)	Local E (ft)	Grid East (US ft)	Grid North (US ft)	Latitude	Longitude
SEC.36-T2N-R65W	2.00	-1892.83	2033.81	1749428.22	14567222.67	40°06'37.922"N	104°36'36.414"W	
SEC.25-T2N-R65W	22.00	8025.02	707.53	1748909.81	14571130.87	40°08'15.932"N	104°36'53.480"W	
ZELDA 25-5HZ BHL REV-1(332'FNL & 1221'FWL,SEC.01)	7147.00	-10616.60	77.24	1747500.95	14558493.96	40°05'11.713"N	104°37'01.596"W	
ZELDA 25-5HZ BHL REV-2(332'FNL & 1336'FWL,SEC.01)	17638.75	7147.00	-10616.62	1747624.91	14558494.44	40°05'11.713"N	104°37'00.116"W	
ZELDA 25-5HZ INT. TARGET@4500'VS	11520.22	7149.00	-4498.97	104.20	1747510.58	14564609.27	40°06'12.169"N	104°37'01.249"W
ZELDA 25-5HZ LAT. TARGET 1	10603.66	7162.42	-3582.70	100.02	1747502.46	14565525.16	40°06'21.223"N	104°37'01.303"W
ZELDA 25-5HZ LAT. TARGET 2	9118.94	7165.68	-2100.42	179.00	1747575.04	14567007.19	40°06'36.871"N	104°37'00.286"W
ZELDA 25-5HZ HEEL REV-2(95'FNL & 1245'FWL,SEC.25)	7169.00	-577.41	30.24	1747419.79	14568528.96	40°06'50.922"N	104°37'02.201"W	
ZELDA 25-5HZ HEEL REV-3(95'FNL & 1325'FWL,SEC.25)	7169.00	-577.41	110.24	1747499.76	14568529.30	40°06'50.922"N	104°37'01.171"W	
ZELDA 25-5HZ HEEL REV-4(95'FNL & 1345'FWL,SEC.25)	7595.14	7169.00	-577.41	130.24	1747519.75	14568529.39	40°06'50.922"N	104°37'00.914"W
ZELDA 25-5HZ LANDBOX	7169.00	0.00	0.00	1747387.07	14569106.00	40°05'56.628"N	104°37'02.590"W	
ZELDA 25-5HZ RADIUS 1	7169.00	-968.86	109.00	1747500.20	14568138.00	40°06'47.054"N	104°37'01.187"W	
ZELDA 25-5HZ RADIUS 2	7169.00	-10285.65	173.66	1747604.90	14558825.20	40°05'14.984"N	104°37'00.356"W	
ZELDA 25-5HZ INT. TARGET@6150'VS	13170.39	7172.00	-6148.80	127.94	1747541.41	14562360.20	40°05'55.865"N	104°37'00.944"W

Hole and Casing Sections

Name	Start MD (ft)	End MD (ft)	Interval (ft)	Start TVD (ft)	End TVD (ft)	Start Local N (ft)	End Local N (ft)	Start Local E (ft)	End Local E (ft)	Wellbore
9.625in Casing Surface	17.00	1814.00	1797.00	17.00	1812.38	0.00	0.00	30.61	44.41	ZELDA 25-5HZ AWB
5.5in Casing Surface	17.00	17638.75	17621.75	17.00	7147.00	0.00	0.00	-10616.62	192.24	ZELDA 25-5HZ ST01 PWB

Bottom Hole Location

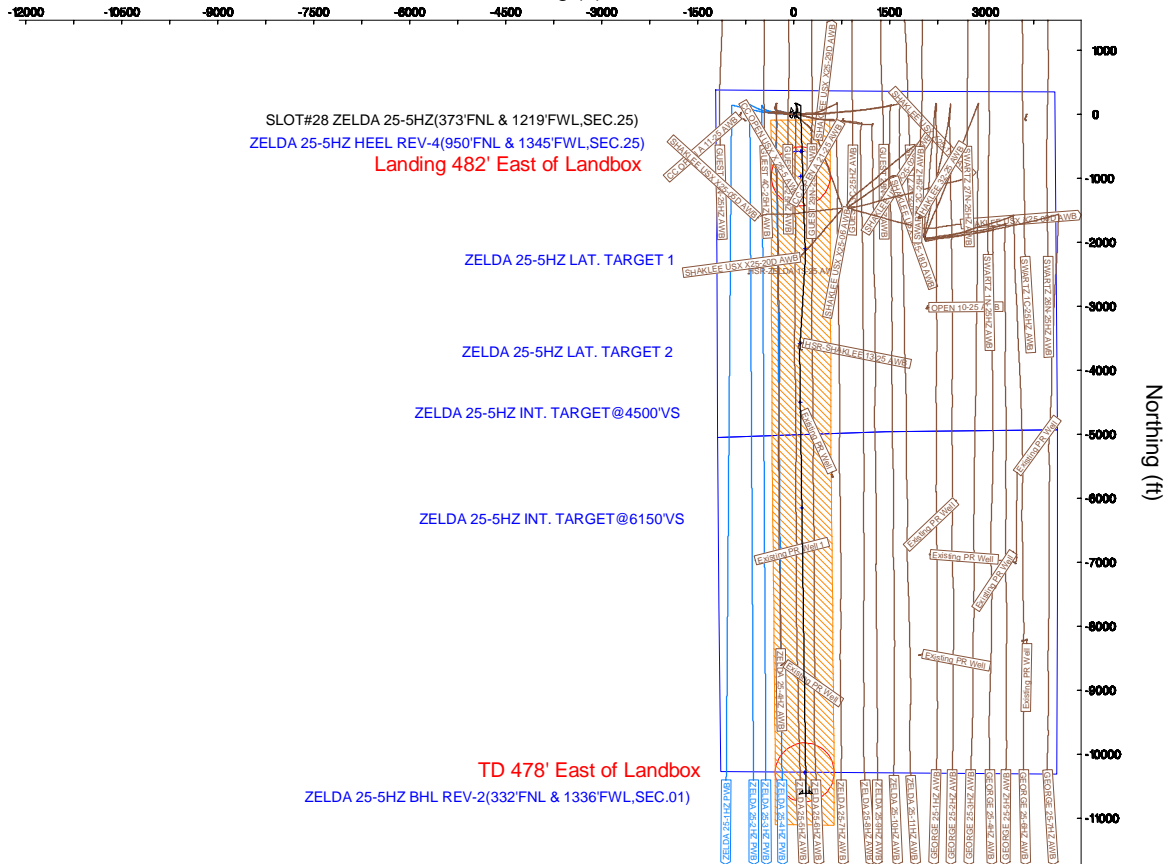
MD (ft)	Inc (°)	Az (°)	TVD (ft)	Local N (ft)	Local E (ft)	Grid East (US ft)	Grid North (US ft)	Latitude	Longitude
17638.75	90.328	179.175	7147.00	-10616.62	192.24	1747624.90	14558494.44	40°05'11.713"N	104°37'00.116"W



Well Profile Data

Design Comment	MD (ft)	Inc (°)	Az (°)	TVD (ft)	Local N (ft)	Local E (ft)	DLS (°/100ft)	VS (ft)
TIE TO AWB	4014.00	0.360	87.700	4002.64	171.89	32.04	0.00	-171.41
End of 3D Arc (J)	4397.85	8.000	113.346	4385.19	161.34	57.80	2.00	-160.49
End of Tangent (J)	4584.69	8.000	113.346	4570.21	151.03	81.68	0.00	-149.84
Drop (XS)	4984.69	0.000	178.166	4968.91	139.98	107.28	2.00	-138.43
KOP	6468.58	0.000	178.166	6452.80	139.98	107.28	0.00	-138.43
LANDING	7595.14	90.125	178.166	7169.00	-577.41	130.24	8.00	579.22
LAT. TARGET	9118.94	90.125	178.166	7165.68	-2100.42	179.00	0.00	2102.78
End of 3D Arc (J)	9387.37	90.126	183.535	7165.09	-2368.73	175.02	2.00	2371.00
LAT. TARGET	10603.66	90.126	183.535	7162.42	-3582.70	100.02	0.00	3583.77
End of 3D Arc (J)	10823.05	90.936	179.223	7160.39	-3801.96	94.74	2.00	3802.93
INT. TARGET	11520.22	90.936	179.223	7149.00	-4498.97	104.20	0.00	4500.00
End of 3D Arc (J)	11609.38	89.153	179.174	7148.93	-4588.12	105.45	2.00	4589.16
INT. TARGET	13170.39	89.153	179.174	7172.00	-6148.80	127.94	0.00	6150.00
End of 3D Arc (J)	13229.15	90.328	179.175	7172.27	-6207.55	128.79	2.00	6208.76
TD	17638.75	90.328	179.175	7147.00	-10616.62	192.24	0.00	10618.28

Scale 1 inch = 750



Vertical Section (ft)

Azimuth 179.18° with reference 0.00 N, 0.00 E

Scale 1 inch = 500

REFERENCE WELLPATH IDENTIFICATION			
Operator	KERR-MCGEE OIL & GAS ONSHORE LP (WA)	Slot	SLOT#28 ZELDA 25-5HZ(373'FNL & 1219'FWL,SEC.25)
Area	COLORADO	Well	ZELDA 25-5HZ
Field	WELD COUNTY (UTM/TRUE NORTH)	Wellbore	ZELDA 25-5HZ ST01 PWB
Facility	SEC.25-T2N-R65W	Sidetrack from	ZELDA 25-5HZ AWP at 4014.00 MD

REPORT SETUP INFORMATION			
Projection System	NAD83 / UTM Zone 13 North, US feet	Software System	WellArchitect® 5.0
North Reference	True	User	Painsetr
Scale	0.999613	Report Generated	8/24/2018 at 1:50 PM
Convergence at slot	0.25° East	Database/Source file	WA_DEN_Anadarko_Defn/ZELDA_25-5HZ_ST01_PWP_Rev-B.0.xml

WELLPATH LOCATION						
	Local coordinates		Grid coordinates		Geographic coordinates	
	North[ft]	East[ft]	Easting[US ft]	Northing[US ft]	Latitude	Longitude
Slot Location	84.05	-3620.90	1747387.07	14569106.00	40°06'56.628"N	104°37'02.590"W
Facility Reference Pt			1751006.90	14569038.09	40°06'55.800"N	104°36'15.984"W
Field Reference Pt			1698235.31	14552047.82	40°04'09.600"N	104°47'36.000"W

WELLPATH DATUM			
Calculation method	Minimum curvature	Xtreme 22 (17') (RT) to Facility Vertical Datum	4920.00ft
Horizontal Reference Pt	Slot	Xtreme 22 (17') (RT) to Mean Sea Level	4920.00ft
Vertical Reference Pt	Xtreme 22 (17') (RT)	Xtreme 22 (17') (RT) to Mud Line at Slot (SLOT#28 ZELDA 25-5HZ(373'FNL & 1219'FWL,SEC.25))	4920.00ft
MD Reference Pt	Xtreme 22 (17') (RT)	Section Origin	N 0.00, E 0.00 ft
Field Vertical Reference	Mean Sea Level	Section Azimuth	179.18°

REFERENCE WELLPATH IDENTIFICATION			
Operator	KERR-MCGEE OIL & GAS ONSHORE LP (WA)	Slot	SLOT#28 ZELDA 25-5HZ(373'FNL & 1219'FWL,SEC.25)
Area	COLORADO	Well	ZELDA 25-5HZ
Field	WELD COUNTY (UTM/TRUE NORTH)	Wellbore	ZELDA 25-5HZ ST01 PWB
Facility	SEC.25-T2N-R65W	Sidetrack from	ZELDA 25-5HZ AWP at 4014.00 MD

WELLPATH DATA (236 stations) † = interpolated/extrapolated station												
MD [ft]	Inclination [°]	Azimuth [°]	TVD [ft]	Vert Sect [ft]	North [ft]	East [ft]	Grid East [US ft]	Grid North [US ft]	Latitude	Longitude	DLS [°/100ft]	Comments
0.00†	0.000	343.240	0.00	0.00	0.00	0.00	1747387.07	14569106.00	40°06'56.628"N	104°37'02.590"W	0.00	
17.00	0.000	343.240	17.00	0.00	0.00	0.00	1747387.07	14569106.00	40°06'56.628"N	104°37'02.590"W	0.00	
126.00	0.880	343.240	126.00	-0.80	0.80	-0.24	1747386.83	14569106.80	40°06'56.636"N	104°37'02.593"W	0.81	FIRST SURFACE MWD+IFR1 SURVEY
158.00	0.790	338.490	157.99	-1.25	1.24	-0.39	1747386.68	14569107.24	40°06'56.640"N	104°37'02.595"W	0.35	
222.00	0.620	345.520	221.99	-2.00	1.99	-0.64	1747386.42	14569107.99	40°06'56.648"N	104°37'02.598"W	0.30	
253.00	0.040	355.980	252.99	-2.17	2.16	-0.68	1747386.38	14569108.16	40°06'56.649"N	104°37'02.599"W	1.87	
285.00	0.130	137.830	284.99	-2.15	2.15	-0.66	1747386.40	14569108.14	40°06'56.649"N	104°37'02.599"W	0.51	
316.00	0.260	148.380	315.99	-2.07	2.06	-0.60	1747386.46	14569108.06	40°06'56.648"N	104°37'02.598"W	0.43	
348.00	0.090	220.280	347.99	-1.99	1.98	-0.58	1747386.49	14569107.98	40°06'56.648"N	104°37'02.597"W	0.77	
380.00	0.220	165.610	379.99	-1.91	1.90	-0.58	1747386.49	14569107.90	40°06'56.647"N	104°37'02.597"W	0.57	
412.00	0.040	123.770	411.99	-1.84	1.83	-0.55	1747386.51	14569107.83	40°06'56.646"N	104°37'02.597"W	0.60	
443.00	0.130	74.380	442.99	-1.84	1.84	-0.51	1747386.55	14569107.84	40°06'56.646"N	104°37'02.597"W	0.35	
475.00	0.130	338.580	474.99	-1.89	1.88	-0.49	1747386.58	14569107.88	40°06'56.647"N	104°37'02.596"W	0.60	
506.00	0.180	337.170	505.99	-1.97	1.96	-0.52	1747386.54	14569107.96	40°06'56.647"N	104°37'02.597"W	0.16	
570.00	0.480	321.880	569.98	-2.27	2.26	-0.73	1747386.34	14569108.26	40°06'56.650"N	104°37'02.599"W	0.48	
601.00	0.350	278.020	600.98	-2.39	2.38	-0.90	1747386.16	14569108.38	40°06'56.651"N	104°37'02.602"W	1.07	
633.00	0.530	324.690	632.98	-2.53	2.51	-1.08	1747385.98	14569108.51	40°06'56.653"N	104°37'02.604"W	1.21	
665.00	0.350	329.700	664.98	-2.73	2.72	-1.22	1747385.84	14569108.71	40°06'56.655"N	104°37'02.606"W	0.57	
697.00	0.350	297.090	696.98	-2.87	2.85	-1.35	1747385.71	14569108.84	40°06'56.656"N	104°37'02.607"W	0.61	
728.00	0.400	300.520	727.98	-2.97	2.94	-1.53	1747385.53	14569108.94	40°06'56.657"N	104°37'02.610"W	0.18	
760.00	0.350	296.300	759.98	-3.07	3.04	-1.72	1747385.35	14569109.04	40°06'56.658"N	104°37'02.612"W	0.18	
792.00	0.310	13.730	791.98	-3.20	3.17	-1.78	1747385.28	14569109.17	40°06'56.659"N	104°37'02.613"W	1.29	
824.00	1.100	41.770	823.98	-3.51	3.48	-1.56	1747385.50	14569109.48	40°06'56.662"N	104°37'02.610"W	2.62	
855.00	1.540	45.550	854.97	-4.01	4.00	-1.06	1747386.00	14569110.00	40°06'56.668"N	104°37'02.604"W	1.45	
887.00	1.580	47.310	886.96	-4.60	4.60	-0.43	1747386.62	14569110.60	40°06'56.673"N	104°37'02.596"W	0.20	
919.00	1.540	41.860	918.95	-5.21	5.22	0.18	1747387.23	14569111.22	40°06'56.680"N	104°37'02.588"W	0.48	
950.00	1.630	37.550	949.93	-5.87	5.88	0.73	1747387.78	14569111.88	40°06'56.686"N	104°37'02.581"W	0.48	
981.00	1.850	35.970	980.92	-6.61	6.63	1.29	1747388.33	14569112.64	40°06'56.694"N	104°37'02.573"W	0.73	
1013.00	2.460	44.850	1012.90	-7.51	7.54	2.08	1747389.12	14569113.55	40°06'56.702"N	104°37'02.563"W	2.17	
1045.00	2.640	48.800	1044.86	-8.46	8.51	3.12	1747390.15	14569114.52	40°06'56.712"N	104°37'02.550"W	0.79	
1077.00	2.770	49.150	1076.83	-9.44	9.50	4.26	1747391.29	14569115.52	40°06'56.722"N	104°37'02.535"W	0.41	
1108.00	2.720	45.200	1107.79	-10.43	10.51	5.34	1747392.37	14569116.53	40°06'56.732"N	104°37'02.521"W	0.63	
1140.00	2.770	43.000	1139.76	-11.52	11.61	6.41	1747393.43	14569117.64	40°06'56.743"N	104°37'02.507"W	0.36	
1172.00	3.030	47.660	1171.72	-12.63	12.74	7.56	1747394.58	14569118.78	40°06'56.754"N	104°37'02.493"W	1.10	
1204.00	3.210	52.330	1203.67	-13.73	13.86	8.90	1747395.91	14569119.90	40°06'56.765"N	104°37'02.475"W	0.97	
1235.00	3.340	54.070	1234.62	-14.77	14.92	10.32	1747397.32	14569120.96	40°06'56.775"N	104°37'02.457"W	0.53	
1267.00	3.340	53.990	1266.56	-15.85	16.02	11.82	1747398.82	14569122.06	40°06'56.786"N	104°37'02.438"W	0.01	
1330.00	3.650	55.830	1329.45	-18.01	18.22	14.97	1747401.96	14569124.28	40°06'56.808"N	104°37'02.397"W	0.52	
1362.00	3.380	63.480	1361.39	-18.97	19.22	16.66	1747403.64	14569125.28	40°06'56.818"N	104°37'02.376"W	1.69	
1393.00	3.340	68.930	1392.33	-19.68	19.95	18.32	1747405.30	14569126.02	40°06'56.825"N	104°37'02.354"W	1.04	
1425.00	3.470	67.700	1424.28	-20.36	20.65	20.08	1747407.06	14569126.73	40°06'56.832"N	104°37'02.332"W	0.47	
1456.00	3.560	67.080	1455.22	-21.07	21.38	21.84	1747408.81	14569127.47	40°06'56.839"N	104°37'02.309"W	0.32	
1488.00	3.650	66.200	1487.16	-21.84	22.18	23.68	1747410.65	14569128.28	40°06'56.847"N	104°37'02.285"W	0.33	
1520.00	3.690	67.700	1519.09	-22.61	22.98	25.57	1747412.53	14569129.09	40°06'56.855"N	104°37'02.261"W	0.33	
1551.00	4.000	66.990	1550.02	-23.38	23.78	27.49	1747414.45	14569129.89	40°06'56.863"N	104°37'02.236"W	1.01	

REFERENCE WELLPATH IDENTIFICATION			
Operator	KERR-MCGEE OIL & GAS ONSHORE LP (WA)	Slot	SLOT#28 ZELDA 25-5HZ(373'FNL & 1219'FWL,SEC.25)
Area	COLORADO	Well	ZELDA 25-5HZ
Field	WELD COUNTY (UTM/TRUE NORTH)	Wellbore	ZELDA 25-5HZ ST01 PWB
Facility	SEC.25-T2N-R65W	Sidetrack from	ZELDA 25-5HZ AWP at 4014.00 MD

WELLPATH DATA (236 stations) † = interpolated/extrapolated station												
MD [ft]	Inclination [°]	Azimuth [°]	TVD [ft]	Vert Sect [ft]	North [ft]	East [ft]	Grid East [US ft]	Grid North [US ft]	Latitude	Longitude	DLS [°/100ft]	Comments
1615.00	4.390	67.080	1613.85	-25.15	25.61	31.80	1747418.75	14569131.74	40°06'56.881"N	104°37'02.181"W	0.61	
1646.00	4.700	69.540	1644.75	-26.02	26.52	34.08	1747421.03	14569132.65	40°06'56.890"N	104°37'02.151"W	1.18	
1678.00	3.910	68.310	1676.66	-26.85	27.38	36.32	1747423.26	14569133.53	40°06'56.899"N	104°37'02.122"W	2.49	
1710.00	3.690	68.570	1708.59	-27.60	28.16	38.29	1747425.23	14569134.31	40°06'56.906"N	104°37'02.097"W	0.69	
1741.00	3.650	68.570	1739.53	-28.30	28.88	40.14	1747427.07	14569135.05	40°06'56.913"N	104°37'02.073"W	0.13	
1773.00	3.650	67.430	1771.46	-29.04	29.64	42.03	1747428.96	14569135.82	40°06'56.921"N	104°37'02.049"W	0.23	LAST SURFACE MWD+IFR1 SURVEY
1889.00	3.360	70.170	1887.24	-31.51	32.21	48.64	1747435.55	14569138.41	40°06'56.946"N	104°37'01.964"W	0.29	FIRST BHGE MWD+IFR1+MSA SURVEY
1977.00	4.380	54.440	1975.04	-34.27	35.04	53.80	1747440.70	14569141.26	40°06'56.974"N	104°37'01.898"W	1.66	
2064.00	4.600	41.020	2061.78	-38.76	39.61	58.79	1747445.67	14569145.85	40°06'57.019"N	104°37'01.833"W	1.23	
2151.00	5.440	20.310	2148.45	-45.20	46.11	62.51	1747449.36	14569152.36	40°06'57.084"N	104°37'01.785"W	2.28	
2239.00	6.370	4.080	2235.99	-53.96	54.89	64.31	1747451.12	14569161.15	40°06'57.170"N	104°37'01.762"W	2.16	
2326.00	7.010	348.420	2322.41	-63.99	64.91	63.58	1747450.35	14569171.16	40°06'57.269"N	104°37'01.772"W	2.21	
2413.00	8.090	342.990	2408.65	-75.08	75.96	60.73	1747447.45	14569182.20	40°06'57.379"N	104°37'01.808"W	1.49	
2501.00	8.830	343.490	2495.69	-87.53	88.36	57.00	1747443.67	14569194.57	40°06'57.501"N	104°37'01.856"W	0.85	
2588.00	9.140	345.790	2581.63	-100.68	101.46	53.40	1747440.02	14569207.65	40°06'57.631"N	104°37'01.903"W	0.55	
2676.00	8.120	345.460	2668.63	-113.52	114.25	50.13	1747436.69	14569220.42	40°06'57.757"N	104°37'01.945"W	1.16	
2764.00	8.790	343.790	2755.67	-126.04	126.72	46.69	1747433.20	14569232.88	40°06'57.880"N	104°37'01.989"W	0.81	
2851.00	8.170	343.680	2841.72	-138.40	139.04	43.10	1747429.55	14569245.17	40°06'58.002"N	104°37'02.035"W	0.71	
2939.00	7.700	340.060	2928.88	-150.00	150.58	39.33	1747425.74	14569256.69	40°06'58.116"N	104°37'02.084"W	0.78	
3026.00	6.110	331.760	3015.25	-159.62	160.14	35.15	1747421.52	14569266.23	40°06'58.211"N	104°37'02.138"W	2.15	
3114.00	4.600	321.560	3102.86	-166.57	167.03	30.74	1747417.08	14569273.10	40°06'58.279"N	104°37'02.194"W	2.02	
3201.00	2.110	310.570	3189.71	-170.39	170.81	27.35	1747413.68	14569276.86	40°06'58.316"N	104°37'02.238"W	2.94	
3289.00	0.420	218.520	3277.69	-171.22	171.61	25.92	1747412.25	14569277.65	40°06'58.324"N	104°37'02.256"W	2.46	
3376.00	0.250	224.950	3364.68	-170.84	171.22	25.59	1747411.92	14569277.27	40°06'58.320"N	104°37'02.261"W	0.20	
3464.00	1.140	92.020	3452.68	-170.66	171.06	26.33	1747412.66	14569277.11	40°06'58.318"N	104°37'02.251"W	1.50	
3577.00	0.970	85.560	3565.66	-170.66	171.09	28.41	1747414.73	14569277.15	40°06'58.319"N	104°37'02.224"W	0.18	
3664.00	0.590	95.600	3652.65	-170.66	171.10	29.59	1747415.91	14569277.17	40°06'58.319"N	104°37'02.209"W	0.46	
3752.00	0.510	66.020	3740.65	-170.76	171.22	30.39	1747416.72	14569277.29	40°06'58.320"N	104°37'02.199"W	0.33	
3839.00	0.570	47.670	3827.64	-171.20	171.67	31.07	1747417.39	14569277.74	40°06'58.324"N	104°37'02.190"W	0.21	
3927.00	0.250	102.780	3915.64	-171.45	171.92	31.58	1747417.90	14569277.99	40°06'58.327"N	104°37'02.184"W	0.54	
4014.00	0.360	87.700	4002.64	-171.41	171.89	32.04	1747418.36	14569277.96	40°06'58.327"N	104°37'02.178"W	0.00	TIE TO AWB
4114.00†	2.327	110.503	4102.61	-170.68	171.19	34.25	1747420.58	14569277.27	40°06'58.320"N	104°37'02.149"W	2.00	
4214.00†	4.324	112.354	4202.43	-168.46	169.05	39.64	1747425.97	14569275.15	40°06'58.299"N	104°37'02.080"W	2.00	
4314.00†	6.323	113.036	4302.00	-164.75	165.46	48.20	1747434.54	14569271.60	40°06'58.263"N	104°37'01.970"W	2.00	
4332.12†	6.686	113.116	4320.00	-163.91	164.65	50.09	1747436.43	14569270.81	40°06'58.255"N	104°37'01.945"W	2.00	SUSSEX
4397.85	8.000	113.346	4385.19	-160.49	161.34	57.80	1747444.16	14569267.52	40°06'58.222"N	104°37'01.846"W	2.00	End of 3D Arc (J)
4414.00†	8.000	113.346	4401.18	-159.57	160.45	59.87	1747446.23	14569266.64	40°06'58.214"N	104°37'01.819"W	0.00	
4514.00†	8.000	113.346	4500.21	-153.87	154.93	72.65	1747459.02	14569261.19	40°06'58.159"N	104°37'01.655"W	0.00	
4584.69	8.000	113.346	4570.21	-149.84	151.03	81.68	1747468.07	14569257.33	40°06'58.121"N	104°37'01.539"W	0.00	End of Tangent (J)
4614.00†	7.414	113.346	4599.26	-148.23	149.47	85.29	1747471.68	14569255.79	40°06'58.105"N	104°37'01.492"W	2.00	
4714.00†	5.414	113.346	4698.63	-143.66	145.05	95.54	1747481.95	14569251.40	40°06'58.061"N	104°37'01.360"W	2.00	
4814.00†	3.414	113.346	4798.33	-140.51	142.00	102.61	1747489.03	14569248.39	40°06'58.031"N	104°37'01.269"W	2.00	
4914.00†	1.414	113.346	4898.23	-138.78	140.33	106.47	1747492.90	14569246.74	40°06'58.015"N	104°37'01.220"W	2.00	
4984.69	0.000	178.166	4968.91	-138.43	139.98	107.28	1747493.70	14569246.39	40°06'58.011"N	104°37'01.209"W	2.00	Drop (XS)
5014.00†	0.000	178.166	4998.22	-138.43	139.98	107.28	1747493.70	14569246.39	40°06'58.011"N	104°37'01.209"W	0.00	

REFERENCE WELLPATH IDENTIFICATION			
Operator	KERR-MCGEE OIL & GAS ONSHORE LP (WA)	Slot	SLOT#28 ZELDA 25-5HZ(373'FNL & 1219'FWL,SEC.25)
Area	COLORADO	Well	ZELDA 25-5HZ
Field	WELD COUNTY (UTM/TRUE NORTH)	Wellbore	ZELDA 25-5HZ ST01 PWB
Facility	SEC.25-T2N-R65W	Sidetrack from	ZELDA 25-5HZ AWP at 4014.00 MD

WELLPATH DATA (236 stations) † = interpolated/extrapolated station												
MD [ft]	Inclination [°]	Azimuth [°]	TVD [ft]	Vert Sect [ft]	North [ft]	East [ft]	Grid East [US ft]	Grid North [US ft]	Latitude	Longitude	DLS [°/100ft]	Comments
5114.00†	0.000	178.166	5098.22	-138.43	139.98	107.28	1747493.70	14569246.39	40°06'58.011"N	104°37'01.209"W	0.00	
5214.00†	0.000	178.166	5198.22	-138.43	139.98	107.28	1747493.70	14569246.39	40°06'58.011"N	104°37'01.209"W	0.00	
5314.00†	0.000	178.166	5298.22	-138.43	139.98	107.28	1747493.70	14569246.39	40°06'58.011"N	104°37'01.209"W	0.00	
5414.00†	0.000	178.166	5398.22	-138.43	139.98	107.28	1747493.70	14569246.39	40°06'58.011"N	104°37'01.209"W	0.00	
5514.00†	0.000	178.166	5498.22	-138.43	139.98	107.28	1747493.70	14569246.39	40°06'58.011"N	104°37'01.209"W	0.00	
5614.00†	0.000	178.166	5598.22	-138.43	139.98	107.28	1747493.70	14569246.39	40°06'58.011"N	104°37'01.209"W	0.00	
5714.00†	0.000	178.166	5698.22	-138.43	139.98	107.28	1747493.70	14569246.39	40°06'58.011"N	104°37'01.209"W	0.00	
5814.00†	0.000	178.166	5798.22	-138.43	139.98	107.28	1747493.70	14569246.39	40°06'58.011"N	104°37'01.209"W	0.00	
5914.00†	0.000	178.166	5898.22	-138.43	139.98	107.28	1747493.70	14569246.39	40°06'58.011"N	104°37'01.209"W	0.00	
6014.00†	0.000	178.166	5998.22	-138.43	139.98	107.28	1747493.70	14569246.39	40°06'58.011"N	104°37'01.209"W	0.00	
6114.00†	0.000	178.166	6098.22	-138.43	139.98	107.28	1747493.70	14569246.39	40°06'58.011"N	104°37'01.209"W	0.00	
6214.00†	0.000	178.166	6198.22	-138.43	139.98	107.28	1747493.70	14569246.39	40°06'58.011"N	104°37'01.209"W	0.00	
6314.00†	0.000	178.166	6298.22	-138.43	139.98	107.28	1747493.70	14569246.39	40°06'58.011"N	104°37'01.209"W	0.00	
6414.00†	0.000	178.166	6398.22	-138.43	139.98	107.28	1747493.70	14569246.39	40°06'58.011"N	104°37'01.209"W	0.00	
6468.58	0.000	178.166	6452.80	-138.43	139.98	107.28	1747493.70	14569246.39	40°06'58.011"N	104°37'01.209"W	0.00	KOP
6514.00†	3.634	178.166	6498.19	-136.99	138.55	107.32	1747493.76	14569244.95	40°06'57.997"N	104°37'01.209"W	8.00	
6614.00†	11.634	178.166	6597.23	-123.72	125.28	107.75	1747494.24	14569231.70	40°06'57.866"N	104°37'01.203"W	8.00	
6714.00†	19.634	178.166	6693.45	-96.79	98.37	108.61	1747495.21	14569204.80	40°06'57.600"N	104°37'01.192"W	8.00	
6814.00†	27.634	178.166	6784.99	-56.74	58.33	109.89	1747496.67	14569164.78	40°06'57.204"N	104°37'01.176"W	8.00	
6894.43†	34.068	178.166	6854.00	-15.53	17.13	111.21	1747498.16	14569123.60	40°06'56.797"N	104°37'01.159"W	8.00	SSPG
6914.00†	35.634	178.166	6870.06	-4.35	5.95	111.57	1747498.57	14569112.43	40°06'56.687"N	104°37'01.154"W	8.00	
6965.76†	39.774	178.166	6911.00	27.29	-25.68	112.58	1747499.72	14569080.82	40°06'56.374"N	104°37'01.141"W	8.00	NBRR
7014.00†	43.634	178.166	6947.01	59.38	-57.75	113.61	1747500.88	14569048.76	40°06'56.057"N	104°37'01.128"W	8.00	
7062.57†	47.519	178.166	6981.00	94.05	-92.41	114.72	1747502.14	14569014.12	40°06'55.715"N	104°37'01.113"W	8.00	N470_B_CK
7114.00†	51.634	178.166	7014.34	133.19	-131.54	115.97	1747503.56	14568975.02	40°06'55.328"N	104°37'01.097"W	8.00	
7208.60†	59.202	178.166	7068.00	211.01	-209.33	118.46	1747506.39	14568897.27	40°06'54.559"N	104°37'01.065"W	8.00	N700_C_CK
7214.00†	59.634	178.166	7070.75	215.66	-213.97	118.61	1747506.55	14568892.62	40°06'54.513"N	104°37'01.063"W	8.00	
7314.00†	67.634	178.166	7115.12	305.17	-303.45	121.47	1747509.80	14568803.19	40°06'53.629"N	104°37'01.027"W	8.00	
7382.08†	73.080	178.166	7138.00	369.26	-367.52	123.52	1747512.13	14568739.16	40°06'52.996"N	104°37'01.000"W	8.00	FRHS
7414.00†	75.634	178.166	7146.61	399.98	-398.23	124.51	1747513.24	14568708.46	40°06'52.693"N	104°37'00.987"W	8.00	
7514.00†	83.634	178.166	7164.58	498.26	-496.47	127.65	1747516.81	14568610.28	40°06'51.722"N	104°37'00.947"W	8.00	
7540.02†	85.715	178.166	7167.00	524.16	-522.36	128.48	1747517.75	14568584.40	40°06'51.466"N	104°37'00.936"W	8.00	CDLL
7595.14	90.125	178.166	7169.00†	579.22	-577.41	130.24	1747519.75	14568529.39	40°06'50.922"N	104°37'00.914"W	8.00	LANDING
7614.00†	90.125	178.166	7168.96	598.08	-596.26	130.85	1747520.43	14568510.55	40°06'50.736"N	104°37'00.906"W	0.00	
7714.00†	90.125	178.166	7168.74	698.06	-696.20	134.05	1747524.06	14568410.65	40°06'49.748"N	104°37'00.865"W	0.00	
7814.00†	90.125	178.166	7168.52	798.04	-796.15	137.25	1747527.69	14568310.76	40°06'48.760"N	104°37'00.824"W	0.00	
7914.00†	90.125	178.166	7168.31	898.03	-896.10	140.44	1747531.32	14568210.86	40°06'47.773"N	104°37'00.782"W	0.00	
8014.00†	90.125	178.166	7168.09	998.01	-996.05	143.64	1747534.95	14568110.97	40°06'46.785"N	104°37'00.741"W	0.00	
8114.00†	90.125	178.166	7167.87	1098.00	-1096.00	146.84	1747538.57	14568011.07	40°06'45.797"N	104°37'00.700"W	0.00	
8214.00†	90.125	178.166	7167.65	1197.98	-1195.95	150.04	1747542.20	14567911.18	40°06'44.809"N	104°37'00.659"W	0.00	
8314.00†	90.125	178.166	7167.43	1297.97	-1295.90	153.24	1747545.83	14567811.28	40°06'43.822"N	104°37'00.618"W	0.00	
8414.00†	90.125	178.166	7167.22	1397.95	-1395.84	156.44	1747549.46	14567711.39	40°06'42.834"N	104°37'00.576"W	0.00	
8513.09†	90.125	178.166	7167.00	1497.03	-1494.88	159.61	1747553.05	14567612.40	40°06'41.855"N	104°37'00.536"W	0.00	CDLL
8514.00†	90.125	178.166	7167.00	1497.93	-1495.79	159.64	1747553.09	14567611.49	40°06'41.846"N	104°37'00.535"W	0.00	
8614.00†	90.125	178.166	7166.78	1597.92	-1595.74	162.84	1747556.72	14567511.60	40°06'40.859"N	104°37'00.494"W	0.00	

REFERENCE WELLPATH IDENTIFICATION			
Operator	KERR-MCGEE OIL & GAS ONSHORE LP (WA)	Slot	SLOT#28 ZELDA 25-5HZ(373'FNL & 1219'FWL,SEC.25)
Area	COLORADO	Well	ZELDA 25-5HZ
Field	WELD COUNTY (UTM/TRUE NORTH)	Wellbore	ZELDA 25-5HZ ST01 PWB
Facility	SEC.25-T2N-R65W	Sidetrack from	ZELDA 25-5HZ AWP at 4014.00 MD

WELLPATH DATA (236 stations) † = interpolated/extrapolated station												
MD [ft]	Inclination [°]	Azimuth [°]	TVD [ft]	Vert Sect [ft]	North [ft]	East [ft]	Grid East [US ft]	Grid North [US ft]	Latitude	Longitude	DLS [°/100ft]	Comments
8714.00†	90.125	178.166	7166.56	1697.90	-1695.69	166.04	1747560.34	14567411.70	40°06'39.871"N	104°37'00.453"W	0.00	
8814.00†	90.125	178.166	7166.34	1797.89	-1795.64	169.24	1747563.97	14567311.81	40°06'38.883"N	104°37'00.412"W	0.00	
8914.00†	90.125	178.166	7166.13	1897.87	-1895.59	172.44	1747567.60	14567211.91	40°06'37.896"N	104°37'00.371"W	0.00	
9014.00†	90.125	178.166	7165.91	1997.86	-1995.54	175.64	1747571.23	14567112.02	40°06'36.908"N	104°37'00.329"W	0.00	
9114.00†	90.125	178.166	7165.69	2097.84	-2095.48	178.84	1747574.86	14567012.12	40°06'35.920"N	104°37'00.288"W	0.00	
9118.94	90.125	178.166	7165.68 ²	2102.78	-2100.42	179.00	1747575.04	14567007.19	40°06'35.871"N	104°37'00.286"W	0.00	LAT. TARGET
9214.00†	90.125	180.068	7165.47	2197.83	-2195.47	180.46	1747576.91	14566912.19	40°06'34.932"N	104°37'00.267"W	2.00	
9314.00†	90.126	182.068	7165.25	2297.77	-2295.44	178.60	1747575.48	14566812.24	40°06'33.944"N	104°37'00.291"W	2.00	
9387.37	90.126	183.535	7165.09	2371.00	-2368.73	175.02	1747572.21	14566738.97	40°06'33.220"N	104°37'00.338"W	2.00	End of 3D Arc (J)
9414.00†	90.126	183.535	7165.03	2397.55	-2395.30	173.37	1747570.68	14566712.40	40°06'32.957"N	104°37'00.359"W	0.00	
9514.00†	90.126	183.535	7164.81	2497.26	-2495.11	167.21	1747564.95	14566612.60	40°06'31.971"N	104°37'00.438"W	0.00	
9614.00†	90.126	183.535	7164.59	2596.97	-2594.92	161.04	1747559.21	14566512.81	40°06'30.985"N	104°37'00.517"W	0.00	
9714.00†	90.126	183.535	7164.37	2696.68	-2694.73	154.88	1747553.48	14566413.01	40°06'29.998"N	104°37'00.597"W	0.00	
9814.00†	90.126	183.535	7164.15	2796.39	-2794.54	148.71	1747547.74	14566313.22	40°06'29.012"N	104°37'00.676"W	0.00	
9914.00†	90.126	183.535	7163.94	2896.10	-2894.35	142.54	1747542.01	14566213.42	40°06'28.026"N	104°37'00.755"W	0.00	
10014.00†	90.126	183.535	7163.72	2995.81	-2994.16	136.38	1747536.28	14566113.62	40°06'27.039"N	104°37'00.835"W	0.00	
10114.00†	90.126	183.535	7163.50	3095.52	-3093.97	130.21	1747530.54	14566013.83	40°06'26.053"N	104°37'00.914"W	0.00	
10214.00†	90.126	183.535	7163.28	3195.23	-3193.78	124.05	1747524.81	14565914.03	40°06'25.067"N	104°37'00.994"W	0.00	
10314.00†	90.126	183.535	7163.06	3294.94	-3293.59	117.88	1747519.07	14565814.23	40°06'24.080"N	104°37'01.073"W	0.00	
10414.00†	90.126	183.535	7162.84	3394.65	-3393.40	111.71	1747513.34	14565714.44	40°06'23.094"N	104°37'01.152"W	0.00	
10514.00†	90.126	183.535	7162.62	3494.36	-3493.21	105.55	1747507.60	14565614.64	40°06'22.108"N	104°37'01.232"W	0.00	
10603.66	90.126	183.535	7162.42 ³	3583.77	-3582.70	100.02	1747502.46	14565525.16	40°06'21.223"N	104°37'01.303"W	0.00	LAT. TARGET
10614.00†	90.164	183.332	7162.39	3594.08	-3593.02	99.40	1747501.89	14565514.84	40°06'21.121"N	104°37'01.311"W	2.00	
10714.00†	90.534	181.366	7161.78	3693.92	-3692.93	95.30	1747498.22	14565414.96	40°06'20.134"N	104°37'01.363"W	2.00	
10814.00†	90.902	179.400	7160.53	3793.88	-3792.91	94.63	1747497.98	14565315.01	40°06'19.146"N	104°37'01.372"W	2.00	
10823.05	90.936	179.223	7160.39	3802.93	-3801.96	94.74	1747498.13	14565305.97	40°06'19.057"N	104°37'01.371"W	2.00	End of 3D Arc (J)
10914.00†	90.936	179.223	7158.90	3893.87	-3892.89	95.98	1747499.75	14565215.08	40°06'18.158"N	104°37'01.355"W	0.00	
11014.00†	90.936	179.223	7157.27	3993.85	-3992.87	97.33	1747501.54	14565115.15	40°06'17.170"N	104°37'01.337"W	0.00	
11114.00†	90.936	179.223	7155.63	4093.84	-4092.84	98.69	1747503.33	14565015.21	40°06'16.182"N	104°37'01.320"W	0.00	
11214.00†	90.936	179.223	7154.00	4193.83	-4192.82	100.05	1747505.11	14564915.28	40°06'15.194"N	104°37'01.302"W	0.00	
11314.00†	90.936	179.223	7152.37	4293.81	-4292.80	101.40	1747506.90	14564815.35	40°06'14.206"N	104°37'01.285"W	0.00	
11414.00†	90.936	179.223	7150.73	4393.80	-4392.78	102.76	1747508.69	14564715.42	40°06'13.218"N	104°37'01.268"W	0.00	
11514.00†	90.936	179.223	7149.10	4493.79	-4492.75	104.12	1747510.47	14564615.49	40°06'12.230"N	104°37'01.250"W	0.00	
11520.22	90.936	179.223	7149.00 ⁴	4500.00	-4498.97	104.20	1747510.58	14564609.27	40°06'12.169"N	104°37'01.249"W	0.00	INT. TARGET
11609.38	89.153	179.174	7148.93	4589.16	-4588.12	105.45	1747512.21	14564520.16	40°06'11.288"N	104°37'01.233"W	2.00	End of 3D Arc (J)
11614.00†	89.153	179.174	7149.00	4593.78	-4592.74	105.51	1747512.30	14564515.55	40°06'11.242"N	104°37'01.232"W	0.00	
11714.00†	89.153	179.174	7150.48	4693.77	-4692.72	106.95	1747514.17	14564415.61	40°06'10.254"N	104°37'01.214"W	0.00	
11814.00†	89.153	179.174	7151.95	4793.76	-4792.70	108.40	1747516.04	14564315.68	40°06'09.266"N	104°37'01.195"W	0.00	
11914.00†	89.153	179.174	7153.43	4893.75	-4892.68	109.84	1747517.91	14564215.75	40°06'08.278"N	104°37'01.176"W	0.00	
12014.00†	89.153	179.174	7154.91	4993.74	-4992.65	111.28	1747519.78	14564115.82	40°06'07.290"N	104°37'01.158"W	0.00	
12114.00†	89.153	179.174	7156.39	5093.73	-5092.63	112.72	1747521.65	14564015.88	40°06'06.302"N	104°37'01.139"W	0.00	
12214.00†	89.153	179.174	7157.87	5193.72	-5192.61	114.16	1747523.52	14563915.95	40°06'05.314"N	104°37'01.121"W	0.00	
12314.00†	89.153	179.174	7159.34	5293.71	-5292.59	115.60	1747525.39	14563816.02	40°06'04.326"N	104°37'01.102"W	0.00	
12414.00†	89.153	179.174	7160.82	5393.69	-5392.57	117.04	1747527.26	14563716.09	40°06'03.338"N	104°37'01.084"W	0.00	
12514.00†	89.153	179.174	7162.30	5493.68	-5492.55	118.48	1747529.13	14563616.15	40°06'02.350"N	104°37'01.065"W	0.00	

REFERENCE WELLPATH IDENTIFICATION			
Operator	KERR-MCGEE OIL & GAS ONSHORE LP (WA)	Slot	SLOT#28 ZELDA 25-5HZ(373'FNL & 1219'FWL,SEC.25)
Area	COLORADO	Well	ZELDA 25-5HZ
Field	WELD COUNTY (UTM/TRUE NORTH)	Wellbore	ZELDA 25-5HZ ST01 PWB
Facility	SEC.25-T2N-R65W	Sidetrack from	ZELDA 25-5HZ AWP at 4014.00 MD

WELLPATH DATA (236 stations) † = interpolated/extrapolated station												
MD [ft]	Inclination [°]	Azimuth [°]	TVD [ft]	Vert Sect [ft]	North [ft]	East [ft]	Grid East [US ft]	Grid North [US ft]	Latitude	Longitude	DLS [°/100ft]	Comments
12614.00†	89.153	179.174	7163.78	5593.67	-5592.53	119.92	1747531.00	14563516.22	40°06'01.362"N	104°37'01.047"W	0.00	
12714.00†	89.153	179.174	7165.26	5693.66	-5692.50	121.36	1747532.87	14563416.29	40°06'00.374"N	104°37'01.028"W	0.00	
12814.00†	89.153	179.174	7166.73	5793.65	-5792.48	122.80	1747534.74	14563316.35	40°05'59.386"N	104°37'01.010"W	0.00	
12832.06†	89.153	179.174	7167.00	5811.71	-5810.54	123.06	1747535.08	14563298.31	40°05'59.207"N	104°37'01.006"W	0.00	CDLL
12914.00†	89.153	179.174	7168.21	5893.64	-5892.46	124.25	1747536.61	14563216.42	40°05'58.398"N	104°37'00.991"W	0.00	
13014.00†	89.153	179.174	7169.69	5993.63	-5992.44	125.69	1747538.48	14563116.49	40°05'57.410"N	104°37'00.973"W	0.00	
13114.00†	89.153	179.174	7171.17	6093.62	-6092.42	127.13	1747540.35	14563016.56	40°05'56.422"N	104°37'00.954"W	0.00	
13170.39	89.153	179.174	7172.00 ⁹	6150.00	-6148.80	127.94	1747541.41	14562960.20	40°05'55.865"N	104°37'00.944"W	0.00	INT. TARGET
13214.00†	90.025	179.175	7172.31	6193.61	-6192.40	128.57	1747542.22	14562916.62	40°05'55.434"N	104°37'00.936"W	2.00	
13229.15	90.328	179.175	7172.27	6208.76	-6207.55	128.79	1747542.51	14562901.48	40°05'55.284"N	104°37'00.933"W	2.00	End of 3D Arc (J)
13314.00†	90.328	179.175	7171.78	6293.61	-6292.39	130.01	1747544.09	14562816.68	40°05'54.446"N	104°37'00.917"W	0.00	
13414.00†	90.328	179.175	7171.21	6393.61	-6392.38	131.45	1747545.96	14562716.74	40°05'53.458"N	104°37'00.898"W	0.00	
13514.00†	90.328	179.175	7170.63	6493.61	-6492.37	132.89	1747547.83	14562616.79	40°05'52.470"N	104°37'00.880"W	0.00	
13614.00†	90.328	179.175	7170.06	6593.60	-6592.35	134.32	1747549.70	14562516.85	40°05'51.481"N	104°37'00.861"W	0.00	
13714.00†	90.328	179.175	7169.49	6693.60	-6692.34	135.76	1747551.57	14562416.91	40°05'50.493"N	104°37'00.843"W	0.00	
13814.00†	90.328	179.175	7168.91	6793.60	-6792.33	137.20	1747553.44	14562316.97	40°05'49.505"N	104°37'00.824"W	0.00	
13914.00†	90.328	179.175	7168.34	6893.60	-6892.32	138.64	1747555.30	14562217.03	40°05'48.517"N	104°37'00.806"W	0.00	
14014.00†	90.328	179.175	7167.77	6993.60	-6992.31	140.08	1747557.17	14562117.08	40°05'47.529"N	104°37'00.787"W	0.00	
14114.00†	90.328	179.175	7167.20	7093.60	-7092.29	141.52	1747559.04	14562017.14	40°05'46.541"N	104°37'00.769"W	0.00	
14148.18†	90.328	179.175	7167.00	7127.78	-7126.47	142.01	1747559.68	14561982.98	40°05'46.203"N	104°37'00.763"W	0.00	CDLL
14214.00†	90.328	179.175	7166.62	7193.59	-7192.28	142.96	1747560.91	14561917.20	40°05'45.553"N	104°37'00.750"W	0.00	
14314.00†	90.328	179.175	7166.05	7293.59	-7292.27	144.40	1747562.78	14561817.26	40°05'44.565"N	104°37'00.732"W	0.00	
14414.00†	90.328	179.175	7165.48	7393.59	-7392.26	145.84	1747564.65	14561717.32	40°05'43.577"N	104°37'00.713"W	0.00	
14514.00†	90.328	179.175	7164.90	7493.59	-7492.25	147.28	1747566.52	14561617.37	40°05'42.589"N	104°37'00.695"W	0.00	
14614.00†	90.328	179.175	7164.33	7593.59	-7592.23	148.71	1747568.38	14561517.43	40°05'41.600"N	104°37'00.676"W	0.00	
14714.00†	90.328	179.175	7163.76	7693.59	-7692.22	150.15	1747570.25	14561417.49	40°05'40.612"N	104°37'00.658"W	0.00	
14814.00†	90.328	179.175	7163.19	7793.58	-7792.21	151.59	1747572.12	14561317.55	40°05'39.624"N	104°37'00.639"W	0.00	
14914.00†	90.328	179.175	7162.61	7893.58	-7892.20	153.03	1747573.99	14561217.61	40°05'38.636"N	104°37'00.621"W	0.00	
15014.00†	90.328	179.175	7162.04	7993.58	-7992.19	154.47	1747575.86	14561117.66	40°05'37.648"N	104°37'00.602"W	0.00	
15114.00†	90.328	179.175	7161.47	8093.58	-8092.17	155.91	1747577.73	14561017.72	40°05'36.660"N	104°37'00.584"W	0.00	
15214.00†	90.328	179.175	7160.89	8193.58	-8192.16	157.35	1747579.59	14560917.78	40°05'35.672"N	104°37'00.565"W	0.00	
15314.00†	90.328	179.175	7160.32	8293.58	-8292.15	158.79	1747581.46	14560817.84	40°05'34.684"N	104°37'00.547"W	0.00	
15414.00†	90.328	179.175	7159.75	8393.57	-8392.14	160.23	1747583.33	14560717.90	40°05'33.696"N	104°37'00.528"W	0.00	
15514.00†	90.328	179.175	7159.17	8493.57	-8492.13	161.66	1747585.20	14560617.95	40°05'32.708"N	104°37'00.510"W	0.00	
15614.00†	90.328	179.175	7158.60	8593.57	-8592.11	163.10	1747587.07	14560518.01	40°05'31.719"N	104°37'00.491"W	0.00	
15714.00†	90.328	179.175	7158.03	8693.57	-8692.10	164.54	1747588.94	14560418.07	40°05'30.731"N	104°37'00.473"W	0.00	
15814.00†	90.328	179.175	7157.46	8793.57	-8792.09	165.98	1747590.81	14560318.13	40°05'29.743"N	104°37'00.454"W	0.00	
15914.00†	90.328	179.175	7156.88	8893.57	-8892.08	167.42	1747592.67	14560218.19	40°05'28.755"N	104°37'00.436"W	0.00	
16014.00†	90.328	179.175	7156.31	8993.56	-8992.07	168.86	1747594.54	14560118.24	40°05'27.767"N	104°37'00.417"W	0.00	
16114.00†	90.328	179.175	7155.74	9093.56	-9092.05	170.30	1747596.41	14560018.30	40°05'26.779"N	104°37'00.399"W	0.00	
16214.00†	90.328	179.175	7155.16	9193.56	-9192.04	171.74	1747598.28	14559918.36	40°05'25.791"N	104°37'00.380"W	0.00	
16314.00†	90.328	179.175	7154.59	9293.56	-9292.03	173.18	1747600.15	14559818.42	40°05'24.803"N	104°37'00.362"W	0.00	
16414.00†	90.328	179.175	7154.02	9393.56	-9392.02	174.62	1747602.02	14559718.48	40°05'23.815"N	104°37'00.343"W	0.00	
16514.00†	90.328	179.175	7153.44	9493.56	-9492.01	176.05	1747603.88	14559618.53	40°05'22.827"N	104°37'00.325"W	0.00	
16614.00†	90.328	179.175	7152.87	9593.55	-9591.99	177.49	1747605.75	14559518.59	40°05'21.839"N	104°37'00.306"W	0.00	

REFERENCE WELLPATH IDENTIFICATION			
Operator	KERR-MCGEE OIL & GAS ONSHORE LP (WA)	Slot	SLOT#28 ZELDA 25-5HZ(373'FNL & 1219'FWL,SEC.25)
Area	COLORADO	Well	ZELDA 25-5HZ
Field	WELD COUNTY (UTM/TRUE NORTH)	Wellbore	ZELDA 25-5HZ ST01 PWB
Facility	SEC.25-T2N-R65W	Sidetrack from	ZELDA 25-5HZ AWP at 4014.00 MD

WELLPATH DATA (236 stations) † = interpolated/extrapolated station												
MD [ft]	Inclination [°]	Azimuth [°]	TVD [ft]	Vert Sect [ft]	North [ft]	East [ft]	Grid East [US ft]	Grid North [US ft]	Latitude	Longitude	DLS [°/100ft]	Comments
16714.00†	90.328	179.175	7152.30	9693.55	-9691.98	178.93	1747607.62	14559418.65	40°05'20.850"N	104°37'00.288"W	0.00	
16814.00†	90.328	179.175	7151.73	9793.55	-9791.97	180.37	1747609.49	14559318.71	40°05'19.862"N	104°37'00.269"W	0.00	
16914.00†	90.328	179.175	7151.15	9893.55	-9891.96	181.81	1747611.36	14559218.77	40°05'18.874"N	104°37'00.251"W	0.00	
17014.00†	90.328	179.175	7150.58	9993.55	-9991.95	183.25	1747613.23	14559118.82	40°05'17.886"N	104°37'00.232"W	0.00	
17114.00†	90.328	179.175	7150.01	10093.55	-10091.93	184.69	1747615.10	14559018.88	40°05'16.898"N	104°37'00.214"W	0.00	
17214.00†	90.328	179.175	7149.43	10193.54	-10191.92	186.13	1747616.96	14558918.94	40°05'15.910"N	104°37'00.195"W	0.00	
17314.00†	90.328	179.175	7148.86	10293.54	-10291.91	187.57	1747618.83	14558819.00	40°05'14.922"N	104°37'00.177"W	0.00	
17414.00†	90.328	179.175	7148.29	10393.54	-10391.90	189.01	1747620.70	14558719.06	40°05'13.934"N	104°37'00.158"W	0.00	
17514.00†	90.328	179.175	7147.71	10493.54	-10491.89	190.44	1747622.57	14558619.11	40°05'12.946"N	104°37'00.140"W	0.00	
17614.00†	90.328	179.175	7147.14	10593.54	-10591.87	191.88	1747624.44	14558519.17	40°05'11.958"N	104°37'00.121"W	0.00	
17638.75	90.328	179.175	7147.00 ⁶	10618.28	-10616.62	192.24	1747624.90	14558494.44	40°05'11.713"N	104°37'00.116"W	0.00	TD

HOLE & CASING SECTIONS - Ref Wellbore: ZELDA 25-5HZ ST01 PWB Ref Wellpath: ZELDA 25-5HZ ST01 PWP Rev-B.0									
String/Diameter	Start MD [ft]	End MD [ft]	Interval [ft]	Start TVD [ft]	End TVD [ft]	Start N/S [ft]	Start E/W [ft]	End N/S [ft]	End E/W [ft]
9.625in Casing Surface	17.00	1814.00	1797.00	17.00	1812.38	0.00	0.00	30.61	44.41
5.5in Casing Surface	17.00	17638.75	17621.75	17.00	7147.00	0.00	0.00	-10616.62	192.24

REFERENCE WELLPATH IDENTIFICATION			
Operator	KERR-MCGEE OIL & GAS ONSHORE LP (WA)	Slot	SLOT#28 ZELDA 25-5HZ(373'FNL & 1219'FWL,SEC.25)
Area	COLORADO	Well	ZELDA 25-5HZ
Field	WELD COUNTY (UTM/TRUE NORTH)	Wellbore	ZELDA 25-5HZ ST01 PWB
Facility	SEC.25-T2N-R65W	Sidetrack from	ZELDA 25-5HZ AWP at 4014.00 MD

TARGETS									
Name	MD [ft]	TVD [ft]	North [ft]	East [ft]	Grid East [US ft]	Grid North [US ft]	Latitude	Longitude	Shape
SEC.36-T2N-R65W		2.00	-1892.83	2033.81	1749428.22	14567222.67	40°06'37.922"N	104°36'36.414"W	polygon
SEC.25-T2N-R65W		22.00	8025.02	707.53	1748059.81	14577130.87	40°08'15.932"N	104°36'53.480"W	polygon
ZELDA 25-5HZ BHL REV-1(332'FNL & 1221'FWL,SEC.01)		7147.00	-10616.60	77.24	1747509.95	14558493.96	40°05'11.713"N	104°37'01.596"W	point
6) ZELDA 25-5HZ BHL REV-2(332'FNL & 1336'FWL,SEC.01)	17638.75	7147.00	-10616.62	192.24	1747624.91	14558494.44	40°05'11.713"N	104°37'00.116"W	point
4) ZELDA 25-5HZ INT. TARGET@4500'VS	11520.22	7149.00	-4498.97	104.20	1747510.58	14564609.27	40°06'12.169"N	104°37'01.249"W	point
3) ZELDA 25-5HZ LAT. TARGET 2	10603.66	7162.42	-3582.70	100.02	1747502.46	14565525.16	40°06'21.223"N	104°37'01.303"W	point
2) ZELDA 25-5HZ LAT. TARGET 1	9118.94	7165.68	-2100.42	179.00	1747575.04	14567007.19	40°06'35.871"N	104°37'00.286"W	point
ZELDA 25-5HZ HEEL REV-2(950'FNL & 1245'FWL,SEC.25)		7169.00	-577.41	30.24	1747419.79	14568528.96	40°06'50.922"N	104°37'02.201"W	point
ZELDA 25-5HZ HEEL REV-3(950'FNL & 1325'FWL,SEC.25)		7169.00	-577.41	110.24	1747499.76	14568529.30	40°06'50.922"N	104°37'01.171"W	point
1) ZELDA 25-5HZ HEEL REV-4(950'FNL & 1345'FWL,SEC.25)	7595.14	7169.00	-577.41	130.24	1747519.75	14568529.39	40°06'50.922"N	104°37'00.914"W	point
ZELDA 25-5HZ LANDBOX		7169.00	0.00	0.00	1747387.07	14569106.00	40°06'56.628"N	104°37'02.590"W	polygon
ZELDA 25-5HZ RADIUS 1		7169.00	-968.86	109.00	1747500.20	14568138.00	40°06'47.054"N	104°37'01.187"W	polygon
ZELDA 25-5HZ RADIUS 2		7169.00	-10285.65	173.66	1747604.90	14558825.20	40°05'14.984"N	104°37'00.356"W	polygon
5) ZELDA 25-5HZ INT. TARGET@6150'VS	13170.39	7172.00	-6148.80	127.94	1747541.41	14562960.20	40°05'55.865"N	104°37'00.944"W	point

SURVEY PROGRAM - Ref Wellbore: ZELDA 25-5HZ ST01 PWB Ref Wellpath: ZELDA 25-5HZ ST01 PWP Rev-B.0				
Start MD [ft]	End MD [ft]	Positional Uncertainty Model	Log Name/Comment	Wellbore
17.00	1773.00	Custom APC_ISCWSA REV 2 MWD+IFR1 (approximation)		ZELDA 25-5HZ AWB
1773.00	4014.00	Custom APC_ISCWSA REV 2 MWD+IFR1+MSA (approximation)		ZELDA 25-5HZ AWB
4014.00	17638.75	Custom APC_ISCWSA REV 2 MWD+IFR1+MSA (approximation)		ZELDA 25-5HZ ST01 PWB

REFERENCE WELLPATH IDENTIFICATION			
Operator	KERR-MCGEE OIL & GAS ONSHORE LP (WA)	Slot	SLOT#28 ZELDA 25-5HZ(373'FNL & 1219'FWL,SEC.25)
Area	COLORADO	Well	ZELDA 25-5HZ
Field	WELD COUNTY (UTM/TRUE NORTH)	Wellbore	ZELDA 25-5HZ ST01 PWB
Facility	SEC.25-T2N-R65W	Sidetrack from	ZELDA 25-5HZ AWP at 4014.00 MD

WELLPATH COMMENTS				
MD [ft]	Inclination [°]	Azimuth [°]	TVD [ft]	Comment
126.00	0.880	343.240	126.00	FIRST SURFACE MWD+IFR1 SURVEY
1773.00	3.650	67.430	1771.46	LAST SURFACE MWD+IFR1 SURVEY
1889.00	3.360	70.170	1887.24	FIRST BHGE MWD+IFR1+MSA SURVEY
4332.12	6.686	113.116	4320.00	SUSSEX
6894.43	34.068	178.166	6854.00	SSPG
6965.76	39.774	178.166	6911.00	NBRR
7062.57	47.519	178.166	6981.00	N470_B_CK
7208.60	59.202	178.166	7068.00	N700_C_CK
7382.08	73.080	178.166	7138.00	FRHS
7540.02	85.715	178.166	7167.00	CDLL
8513.09	90.125	178.166	7167.00	CDLL
12832.06	89.153	179.174	7167.00	CDLL
14148.18	90.328	179.175	7167.00	CDLL

DESIGN COMMENTS				
MD [ft]	Inclination [°]	Azimuth [°]	TVD [ft]	Comment
4014.00	0.360	87.700	4002.64	TIE TO AWB
4397.85	8.000	113.346	4385.19	End of 3D Arc (J)
4584.69	8.000	113.346	4570.21	End of Tangent (J)
4984.69	0.000	178.166	4968.91	Drop (XS)
6468.58	0.000	178.166	6452.80	KOP
7595.14	90.125	178.166	7169.00	LANDING
9118.94	90.125	178.166	7165.68	LAT. TARGET
9387.37	90.126	183.535	7165.09	End of 3D Arc (J)
10603.66	90.126	183.535	7162.42	LAT. TARGET
10823.05	90.936	179.223	7160.39	End of 3D Arc (J)
11520.22	90.936	179.223	7149.00	INT. TARGET
11609.38	89.153	179.174	7148.93	End of 3D Arc (J)
13170.39	89.153	179.174	7172.00	INT. TARGET
13229.15	90.328	179.175	7172.27	End of 3D Arc (J)
17638.75	90.328	179.175	7147.00	TD