

HALLIBURTON

iCem[®] Service

CATAMOUNT ENERGY PARTNERS LLC-EBUS

United States of America, COLORADO

For: JAKE RICHTER

Date: Saturday, July 21, 2018

JAQUES #9 Surface PJR

Sincerely,

Farmington Cement Engineering

2.0 Real-Time Job Summary

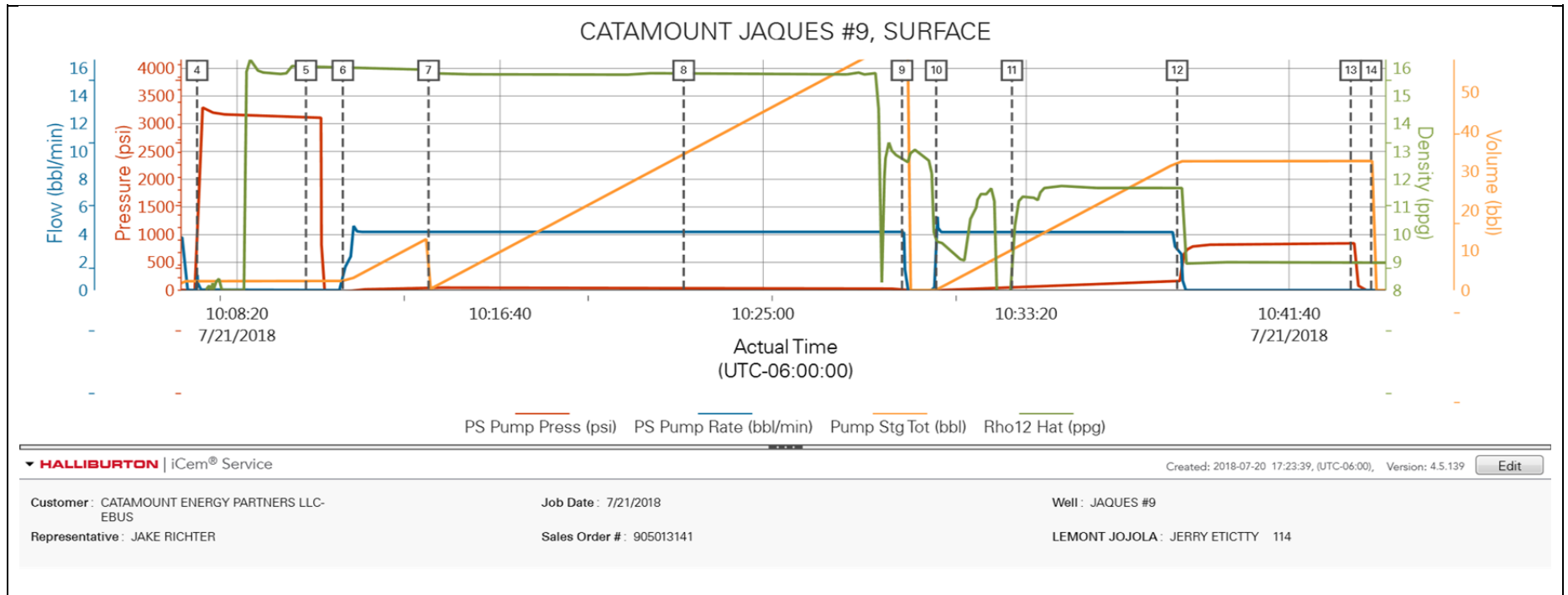
2.1 Job Event Log

Type	Seq. No.	Graph Label	Date	Time	Source	PS Pump Press (psi)	PS Pump Rate (bbl/min)	Pump Stg Tot (bbl)	rho12_hat (ppg)	Comments
Event	1	Call Out	7/21/2018	01:00:00	USER					CEMENT CREW CALLED OUT
Event	2	Depart Yard Safety Meeting	7/21/2018	04:50:00	USER					SAFETY MEETING HELD WITH CEMENT CREW
Event	3	Depart Home for Location	7/21/2018	05:00:00	USER					1-PICKUP 11583927, 1- RED TIGER 12638114, 1-BULK TRUCKS 11338219 - 10001398
Event	4	Arrive At Loc	7/21/2018	06:00:00	USER					CEMENT CREW ARRIVES ON LOCATION
Event	5	Comment	7/21/2018	06:05:00	USER					RIG CREW IS RUNNING IN HOLE AT TIME OF ARRIVAL
Event	6	Tubulars	7/21/2018	06:10:00	USER					TD = 533 FT, TP = 8 5/8" 24# SET @ 512 FT, SJ = 45 FT, OH = 12 1/4"
Event	7	Water Test	7/21/2018	06:15:00	USER					TEMPERATURE = 63 DEGREES, CHLORIDES = 0, PH = 7
Event	8	Pre-Rig Up Safety Meeting	7/21/2018	09:30:00	USER					SAFETY MEETING HELD WITH CEMENT CREW
Event	9	Rig-Up Equipment	7/21/2018	09:35:00	USER	-34.00	0.00	0.00	0.00	CEMENT CREW RIGS UP EQUIPMENT
Event	10	Pre-Job Safety Meeting	7/21/2018	09:50:00	USER	-35.00	0.00	0.00	0.00	SAFETY MEETING HELD WITH EVERYONE ON LOCATION
Event	11	Comment	7/21/2018	09:55:00	USER	96.00	0.30	34.60	0.00	RIG CIRCULATED 95 SPM WITH 40 PSI FOR 45 MINUTES
Event	12	Start Job	7/21/2018	09:55:09	COM5	21.00	0.00	34.60	0.00	
Event	13	Pressure Test	7/21/2018	10:07:04	USER	-23.00	0.50	2.30	7.96	PRESSURE TEST GOOD TO 3125 PSI
Event	14	Check Weight	7/21/2018	10:10:31	COM5	3107.00	0.00	2.30	16.07	CHECK CEMENT WEIGHT = 15.8#

Event	15	Pump Spacer	7/21/2018	10:11:41	USER	-29.00	1.10	2.30	16.02	PUMPED 10 BBLS H2O
Event	16	Pump Cement	7/21/2018	10:14:24	USER	37.00	4.20	0.00	15.83	280 SKS 1.18 CUFT/SK 5.24 GAL/SK = 58.8 BBLS @ 15.8#, 35 BBLS H2O REQ
Event	17	Check Weight	7/21/2018	10:22:29	COM5	37.00	4.20	34.30	15.80	CHECK CEMENT WEIGHT = 15.8#
Event	18	Shutdown	7/21/2018	10:29:24	USER	24.00	4.20	63.60	12.82	SHUTDOWN DROP PLUG
Event	19	Pump Displacement	7/21/2018	10:30:29	USER	-30.00	2.00	0.10	9.74	CALCULATED 30 BBLS TO DISPLACE CEMENT, ACTUALLY PUMPED 30 BBLS TANK TO TANK MARK TO MARK
Event	20	Cement Returns to Surface	7/21/2018	10:32:53	USER	53.00	4.20	10.20	8.71	CALCULATED 18 BBLS OF CEMENT BACK TO SURFACE, ACTUALLY CIRCULATED 18 BBLS OF CEMENT BACK TO SURFACE
Event	21	Bump Plug	7/21/2018	10:38:07	USER	170.00	2.80	32.10	11.70	CALCULATED 181 PSI TO LAND PLUG, PLUG BUMPED @ 200 PSI PRESSURED UP TO 820 PSI
Event	22	Check Floats	7/21/2018	10:43:37	USER	845.00	0.00	32.60	9.01	CHECK FLOATS, FLOATS HELD 1/4 BBLS BACK
Event	23	Shutdown	7/21/2018	10:44:16	USER	-27.00	0.00	32.60	9.00	SHUTDOWN END JOB, THANK YOU FOR CHOOSING HALLIBURTON LEMONT JOJOLA AND CREW
Event	24	Pre-Rig Down Safety Meeting	7/21/2018	10:50:00	USER					SAFETY MEETING HELD WITH CEMENT CREW
Event	25	Rig-Down Equipment	7/21/2018	10:55:00	USER					CEMENT CREW RIGS DOWN EQUIPMENT
Event	26	Depart Location Safety Meeting	7/21/2018	11:20:00	USER					SAFETY MEETING HELD WITH CEMENT CREW
Event	27	Depart Location	7/21/2018	11:25:00	USER					CENEMT CREW DEPARTS LOCATION

3.0 Attachments

3.1 CATAMOUNT JAQUES #9 SURFACE-Custom Results.png



4.0 Custom Graphs

4.1 Custom Graph

