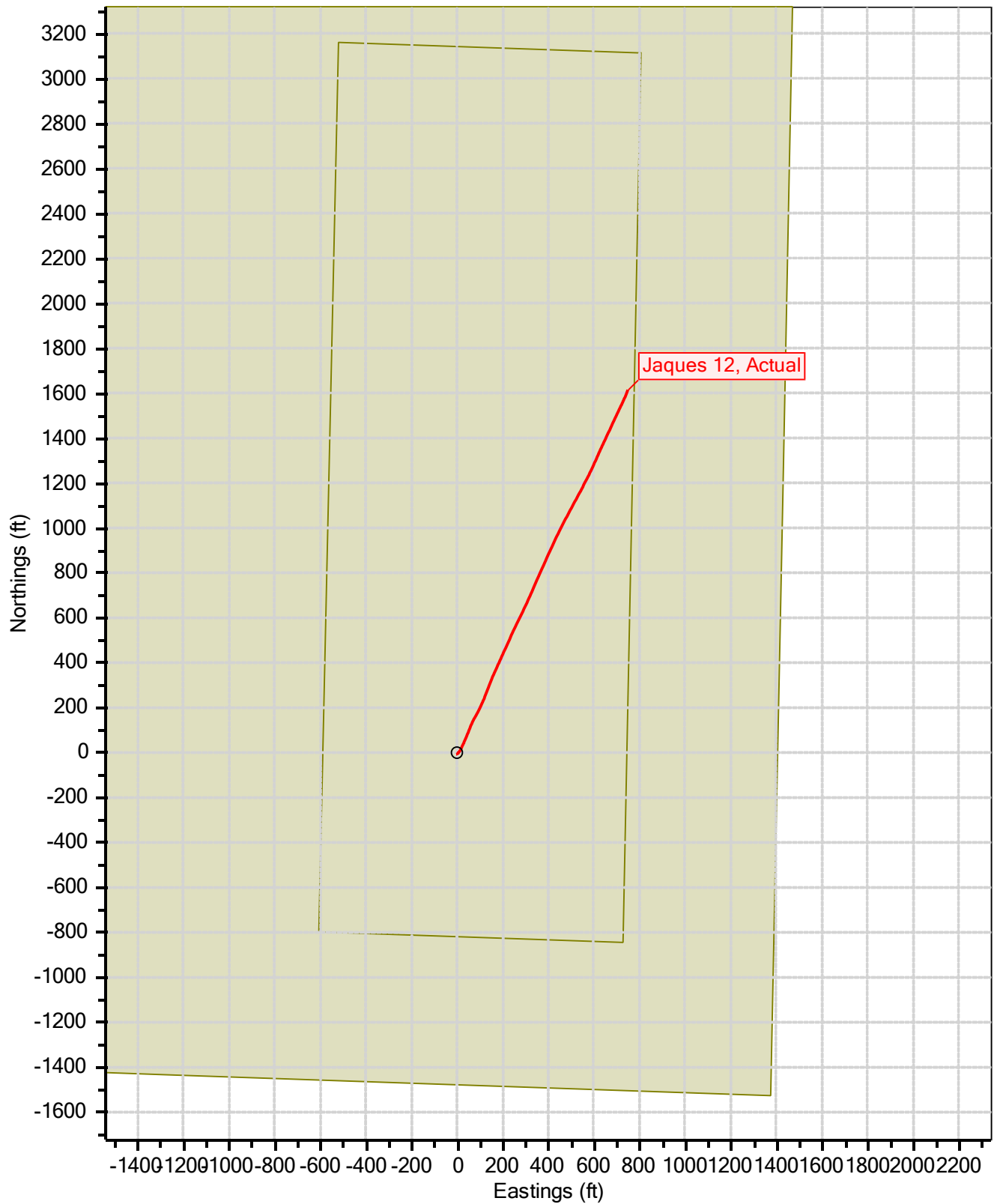


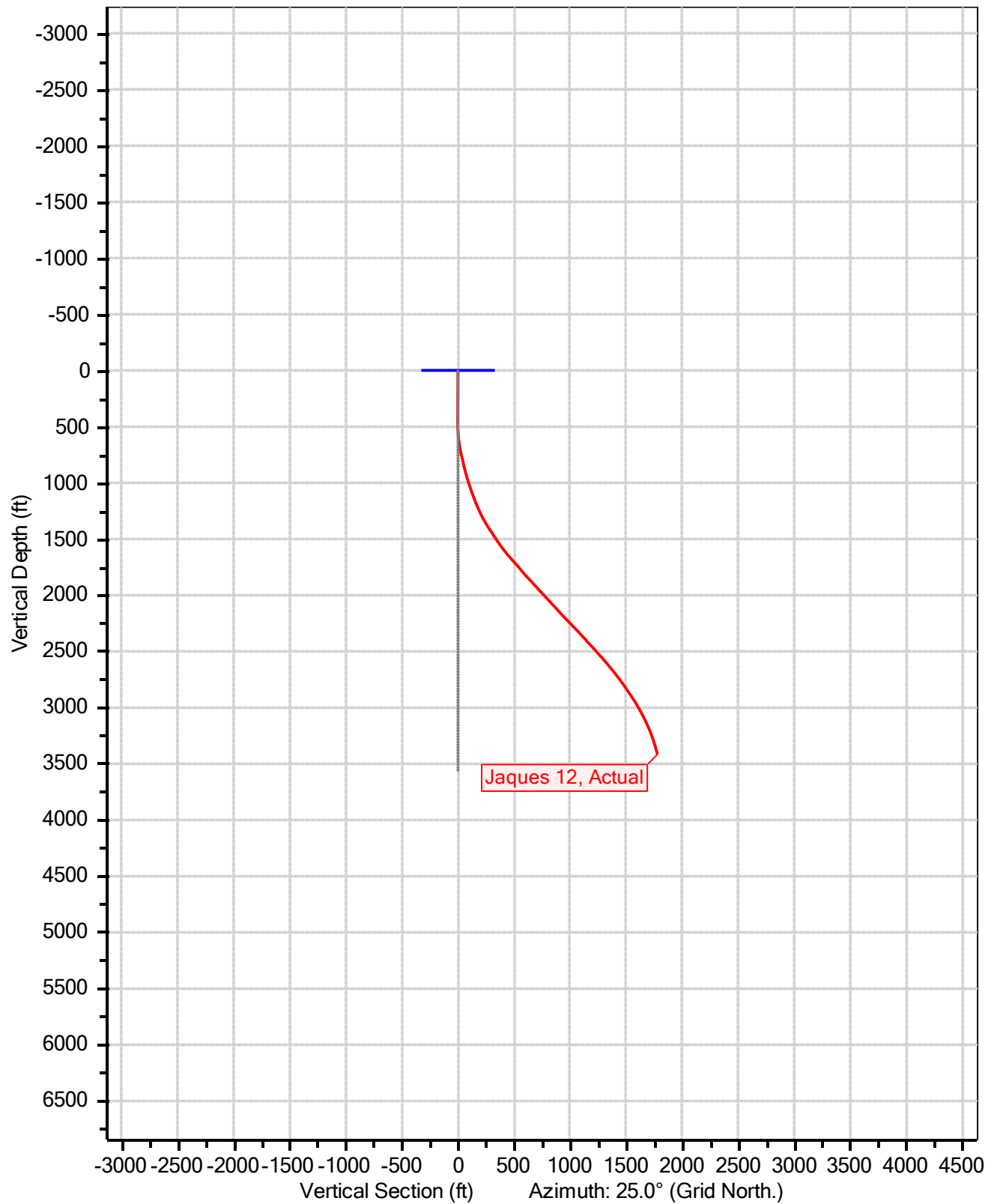
**Ignacio Blanco, Jaques Sec 27
Fruitland Coal
Jaques 12
Actual
Survey Date: Wednesday, July 18, 2018**

**Catamount Energy Partners
Survey Report**

Fruitland Coal, Jaques 12



Fruitland Coal, Jaques 12



Catamount Energy Partners

Survey Report



Database:	San Juan Basin	Local Coordinate Reference:	Jaques 12
Company:		TVD Reference:	Jaques 12
Project:	Jaques Sec 27	MD Reference:	Jaques 12
Site:	Fruitland Coal	North reference:	Grid North
Well:	Jaques 12	Survey Calculation Method:	Minimum Curvature
Wellbore:			
Survey:	Actual		

Project	Jaques Sec 27		
Map System:	NAD83 Colorado State Planes	System Datum:	Mean Sea Level
Geo Datum:	NAD 1983		
Map Zone:	Southern Zone		

Site	Fruitland Coal				
Site Position:		Northing:	0 N	Latitude:	33.48902771° N
From:	Map	Easting:	0 E	Longitude:	115.33027986° W
Position Uncertainty:	0ft	Slot Radius:	0in	Grid Convergence:	-6.0°

Well	Jaques 12					
Well Position:	+N/-S	1155069ft	Northing:	1155069 N	Latitude:	37.07177125° N
	+E/-W	2358065ft	Easting:	2358065 E	Longitude:	107.70036323° W
Position Uncertainty:		1ft	Wellhead Elevation:	6739ft	Ground Level:	6728ft

Magnetics	Model Name	Sample Date	Declination (°)	Dip Angle (°)	Field Strength (nT)
	User Defined	7/16/2018	0.0	0.0	0.0

Survey	Actual		
Audit Notes:			
Version:	Phase:	Tie On Depth:	0ft

Vertical Section:	Depth from TVD (ft)	+N/-S (ft)	+E/-W (ft)	Direction (°)
	0	0	0	25.0

Survey Program		7/19/2018		
From (ft)	To (ft)	Survey (Wellbore)	Tool Name	Description
0	3991	Actual	MWD	MWD

Survey	Measured Depth (ft)	Incl. (°)	Az. (°)	Vertical Depth (ft)	Sub Sea Depth (ft)	+N/-S (ft)	+E/-W (ft)	Vertical Section (ft)	Closure Distance (ft)	Closure Azimuth (°)	Dogleg Rate (°/100ft)	Comments/ Formations
	0	0.0	0.0	0	-6739	0	0	0	0	0.0	0.0	MWD
	411	1.2	146.3	411	-6328	-4	2	-2	4	146.3	0.3	
	443	1.1	150.3	443	-6296	-4	3	-3	5	146.6	0.5	
	474	0.9	87.3	474	-6265	-4	3	-3	5	144.6	3.4	
	536	3.3	42.1	536	-6203	-3	5	-1	6	122.7	4.5	
	567	4.8	40.7	567	-6172	-1	6	1	6	103.1	4.6	
	598	6.2	36.6	598	-6141	1	8	4	8	84.1	4.7	
	629	7.8	33.6	628	-6111	4	10	8	11	69.1	5.3	
	661	9.2	32.3	660	-6079	8	13	13	15	58.4	4.4	
	690	10.4	29.3	689	-6050	12	15	17	20	51.7	4.5	
	721	11.5	26.1	719	-6020	17	18	23	25	46.2	4.1	
	753	13.1	24.9	750	-5989	23	21	30	32	41.8	5.0	
	785	13.2	24.5	782	-5957	30	24	37	39	38.6	0.4	
	815	12.9	23.8	811	-5928	36	27	44	45	36.5	0.9	
	844	13.5	23.1	839	-5900	42	29	51	52	34.8	2.1	

Catamount Energy Partners

Survey Report



Database:	San Juan Basin	Local Coordinate Reference:	Jaques 12
Company:		TVD Reference:	Jaques 12
Project:	Jaques Sec 27	MD Reference:	Jaques 12
Site:	Fruitland Coal	North reference:	Grid North
Well:	Jaques 12	Survey Calculation Method:	Minimum Curvature
Wellbore:			
Survey:	Actual		

Survey Measured Depth (ft)	Incl. (°)	Az. (°)	Vertical Depth (ft)	Sub Sea Depth (ft)	+N/-S (ft)	+E/-W (ft)	Vertical Section (ft)	Closure Distance (ft)	Closure Azimuth (°)	Dogleg Rate (°/100ft)	Comments/ Formations
875	14.0	22.9	869	-5870	49	32	58	59	33.3	1.6	
906	14.6	23.4	899	-5840	56	35	66	66	32.2	1.8	
936	15.5	22.1	928	-5811	63	38	74	74	31.2	3.1	
965	16.4	21.5	956	-5783	71	41	82	82	30.3	3.3	
997	17.2	22.1	987	-5752	79	45	91	91	29.4	2.5	
1028	18.1	22.7	1016	-5723	88	48	100	100	28.8	3.2	
1060	19.1	22.0	1047	-5692	97	52	110	111	28.2	3.0	
1092	20.0	21.6	1077	-5662	107	56	121	121	27.6	2.8	
1123	20.8	21.5	1106	-5633	117	60	132	132	27.1	2.7	
1155	21.3	23.1	1136	-5603	128	65	143	143	26.7	2.3	
1186	21.3	25.6	1165	-5574	138	69	155	155	26.6	2.9	
1217	22.0	27.8	1193	-5546	148	74	166	166	26.6	3.5	
1249	23.5	29.4	1223	-5516	159	80	178	178	26.7	5.2	
1281	25.2	28.3	1252	-5487	171	87	191	192	26.9	5.3	
1312	26.5	26.4	1280	-5459	183	93	205	205	26.9	4.9	
1344	27.8	25.7	1308	-5431	196	99	220	220	26.8	4.4	
1376	29.4	25.0	1336	-5403	210	106	235	235	26.7	5.1	
1407	31.3	23.6	1363	-5376	224	112	251	251	26.6	6.5	
1439	32.7	21.9	1390	-5349	240	119	267	268	26.3	5.2	
1470	33.7	20.7	1416	-5323	256	125	284	284	26.0	3.9	
1502	33.6	20.6	1443	-5296	272	131	302	302	25.7	0.4	
1533	33.1	20.3	1469	-5270	288	137	319	319	25.4	1.8	
1565	33.1	21.5	1496	-5243	305	143	337	337	25.2	2.1	
1597	34.3	22.3	1522	-5217	321	150	354	354	25.0	3.8	
1628	35.6	22.5	1548	-5191	337	157	372	372	24.9	4.4	
1659	36.8	23.2	1573	-5166	354	164	390	390	24.8	3.9	
1691	38.2	23.9	1598	-5141	372	172	410	410	24.8	4.6	
1722	39.3	24.2	1622	-5117	390	180	429	429	24.7	3.7	
1754	40.5	24.0	1647	-5092	409	188	450	450	24.7	3.6	
1786	41.4	23.9	1671	-5068	428	196	471	471	24.7	2.9	
1817	42.3	24.2	1694	-5045	447	205	491	491	24.6	2.9	
1849	42.0	24.1	1718	-5021	466	214	513	513	24.6	0.8	
1881	40.9	23.9	1742	-4997	486	222	534	534	24.6	3.6	
1912	39.8	23.6	1765	-4974	504	230	554	554	24.6	3.7	
1944	40.4	23.5	1790	-4949	523	239	575	575	24.5	1.8	
1975	41.3	24.7	1813	-4926	541	247	595	595	24.5	3.9	
2007	42.7	26.3	1837	-4902	561	256	616	616	24.5	5.5	
2039	43.4	26.0	1861	-4878	580	266	638	638	24.6	2.2	
2070	42.7	25.7	1883	-4856	599	275	659	659	24.6	2.4	
2102	41.8	25.0	1907	-4832	619	284	681	681	24.7	3.1	
2134	42.8	25.7	1931	-4808	638	293	702	702	24.7	3.4	
2165	43.0	24.2	1953	-4786	657	302	723	723	24.7	3.4	
2197	42.6	23.7	1977	-4762	677	311	745	745	24.7	1.7	
2229	43.2	23.4	2000	-4739	697	320	767	767	24.6	2.1	
2260	43.6	23.4	2023	-4716	717	328	788	788	24.6	1.3	
2324	41.8	22.4	2070	-4669	757	345	832	832	24.5	3.1	
2355	41.9	24.9	2093	-4646	776	353	852	852	24.5	5.3	
2387	43.0	23.2	2117	-4622	795	362	874	874	24.5	5.0	
2450	43.1	24.0	2163	-4576	835	379	917	917	24.4	0.9	
2481	43.8	24.1	2185	-4554	854	388	938	938	24.4	2.5	

Catamount Energy Partners

Survey Report



Database:	San Juan Basin	Local Coordinate Reference:	Jaques 12
Company:		TVD Reference:	Jaques 12
Project:	Jaques Sec 27	MD Reference:	Jaques 12
Site:	Fruitland Coal	North reference:	Grid North
Well:	Jaques 12	Survey Calculation Method:	Minimum Curvature
Wellbore:			
Survey:	Actual		

Survey Measured Depth (ft)	Incl. (°)	Az. (°)	Vertical Depth (ft)	Sub Sea Depth (ft)	+N/-S (ft)	+E/-W (ft)	Vertical Section (ft)	Closure Distance (ft)	Closure Azimuth (°)	Dogleg Rate (°/100ft)	Comments/ Formations
2513	44.5	24.5	2208	-4531	874	397	960	960	24.4	2.2	
2545	44.1	24.4	2231	-4508	895	406	983	983	24.4	1.1	
2576	43.6	24.2	2253	-4486	914	415	1004	1004	24.4	1.8	
2608	44.0	24.7	2276	-4463	935	424	1026	1026	24.4	1.5	
2640	43.9	25.5	2299	-4440	955	434	1049	1049	24.4	1.8	
2671	43.0	25.2	2322	-4417	974	443	1070	1070	24.5	3.0	
2703	42.8	25.1	2345	-4394	994	452	1092	1092	24.5	0.8	
2735	42.3	26.6	2369	-4370	1013	462	1113	1113	24.5	3.5	
2766	41.9	27.9	2392	-4347	1032	471	1134	1134	24.6	3.1	
2798	42.5	28.1	2416	-4323	1051	481	1156	1156	24.6	1.9	
2830	42.8	28.1	2439	-4300	1070	492	1177	1177	24.7	0.9	
2861	42.8	28.0	2462	-4277	1088	501	1198	1198	24.7	0.3	
2893	42.7	27.9	2485	-4254	1107	512	1220	1220	24.8	0.3	
2924	42.5	27.8	2508	-4231	1126	521	1241	1241	24.8	0.7	
2956	42.0	27.6	2532	-4207	1145	531	1262	1262	24.9	1.6	
2988	41.5	27.5	2556	-4183	1164	541	1284	1284	24.9	1.4	
3019	40.8	27.2	2579	-4160	1182	551	1304	1304	25.0	2.5	
3051	40.2	26.9	2604	-4135	1201	560	1325	1325	25.0	2.0	
3082	39.4	26.6	2627	-4112	1218	569	1345	1345	25.0	2.7	
3114	38.6	26.1	2652	-4087	1236	578	1365	1365	25.1	2.8	
3146	39.0	25.5	2677	-4062	1254	587	1385	1385	25.1	1.8	
3177	39.1	24.8	2701	-4038	1272	595	1404	1404	25.1	1.3	
3209	37.7	24.0	2726	-4013	1290	603	1424	1424	25.1	4.7	
3241	36.5	23.3	2752	-3987	1308	611	1443	1443	25.0	3.9	
3272	35.1	23.1	2777	-3962	1324	618	1462	1462	25.0	4.5	
3304	35.0	23.7	2803	-3936	1341	625	1480	1480	25.0	1.2	
3335	34.5	23.8	2829	-3910	1358	632	1498	1498	25.0	1.7	
3367	34.2	24.6	2855	-3884	1374	640	1516	1516	25.0	1.6	
3398	35.1	25.8	2881	-3858	1390	647	1533	1533	25.0	3.6	
3430	34.1	25.4	2907	-3832	1406	655	1551	1551	25.0	3.3	
3462	32.6	25.1	2934	-3805	1422	663	1569	1569	25.0	4.5	
3493	31.3	24.7	2960	-3779	1437	670	1585	1585	25.0	4.3	
3525	29.6	23.9	2988	-3751	1452	676	1602	1602	25.0	5.4	
3557	29.3	23.8	3015	-3724	1466	683	1617	1617	25.0	1.2	
3588	28.5	24.1	3043	-3696	1480	689	1632	1632	25.0	2.4	
3619	27.8	24.5	3070	-3669	1493	695	1647	1647	24.9	2.6	
3651	27.3	25.6	3098	-3641	1507	701	1662	1662	25.0	2.1	
3683	26.1	25.7	3127	-3612	1520	707	1676	1676	25.0	3.7	
3714	24.3	25.4	3155	-3584	1532	713	1689	1689	25.0	5.7	
3746	22.6	25.5	3184	-3555	1543	718	1702	1702	25.0	5.3	
3778	21.1	23.9	3214	-3525	1554	723	1714	1714	25.0	5.0	
3809	20.3	24.0	3243	-3496	1564	728	1725	1725	25.0	2.7	
3841	19.6	23.9	3273	-3466	1574	732	1736	1736	25.0	2.3	
3873	18.4	23.5	3303	-3436	1583	736	1746	1746	24.9	3.7	
3904	17.2	22.0	3333	-3406	1592	740	1756	1756	24.9	4.0	
3935	16.1	21.1	3362	-3377	1600	743	1765	1765	24.9	3.9	
3991	16.1	21.1	3416	-3323	1615	749	1780	1780	24.9	0.1	

Checked By:	Approved By:	Date:
-------------	--------------	-------

Catamount Energy Partners

Survey Report



Database:	San Juan Basin	Local Coordinate Reference:	Jaques 12
Company:		TVD Reference:	Jaques 12
Project:	Jaques Sec 27	MD Reference:	Jaques 12
Site:	Fruitland Coal	North reference:	Grid North
Well:	Jaques 12	Survey Calculation Method:	Minimum Curvature
Wellbore:			
Survey:	Actual		

Disclaimer Notice

Catamount Energy Partners makes no warranty of any kind with respect to the subject matter included herein or the completeness or accuracy of this document.

Catamount Energy Partners are not responsible for any actions (or lack thereof) taken as a result of relying on or in any way using information contained in this document and in no event shall be liable for any damages resulting from reliance on or use of this information.