

COMPANY : CATAMOUNT
WELL : JQUES 11 PILOT
FIELD : FRUITLAND COAL
COUNTY : LA PLATA
STATE : COLORADO
COUNTRY : USA
UWI : 05-067-10019

WELL LOCATION NAD83
LAT:37.0717258° LONG:-107.7003685°
SEC:27 TWP:33N RANGE:8W

OTHER SERVICES

DIRECTIONAL

ROP

GROUND LEVEL : 6728.000 ft G.L. to MEAN SEA LEVEL

DEVIATION RECORD

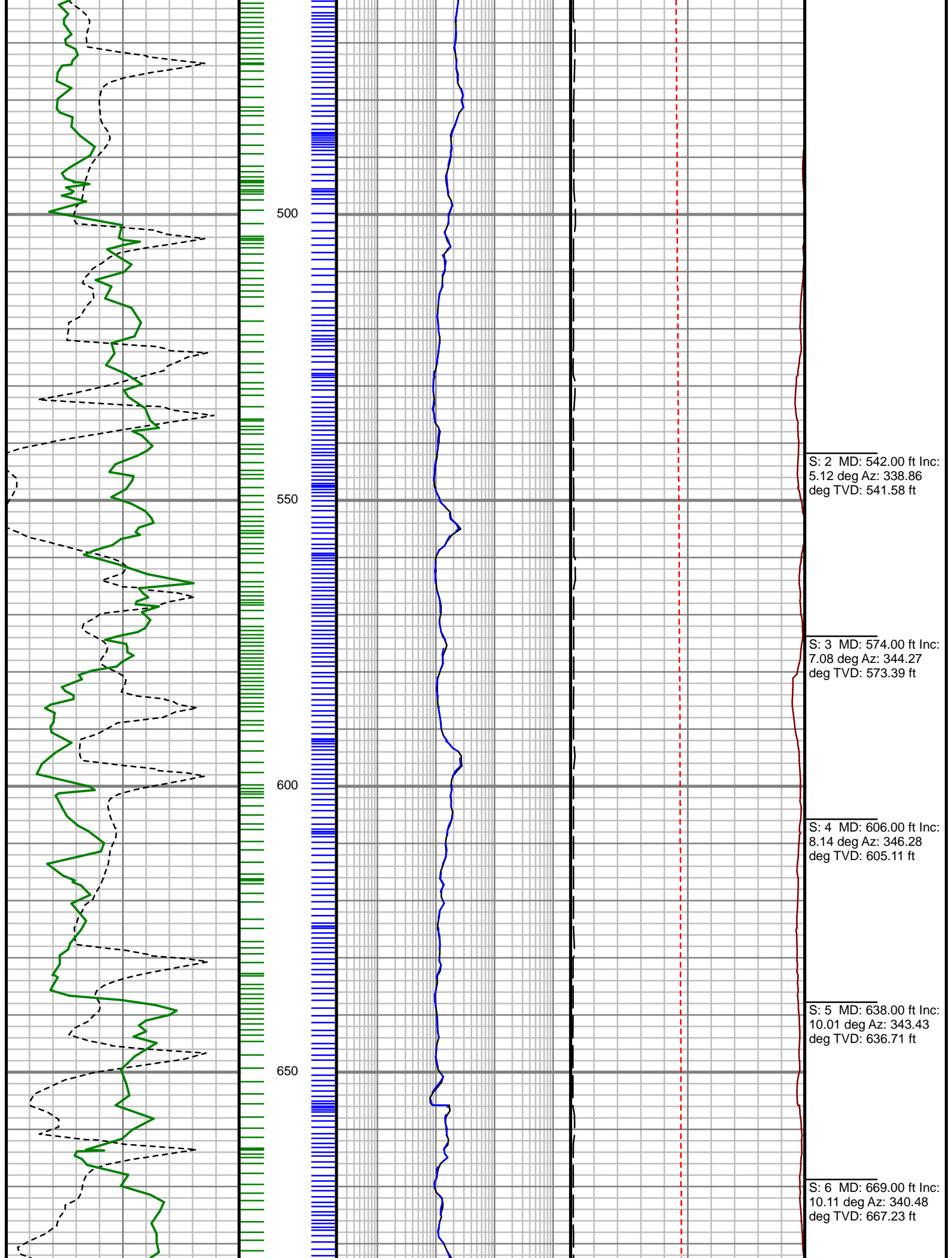
			TOTAL DEPTH : 3900 ft
--	--	--	-----------------------

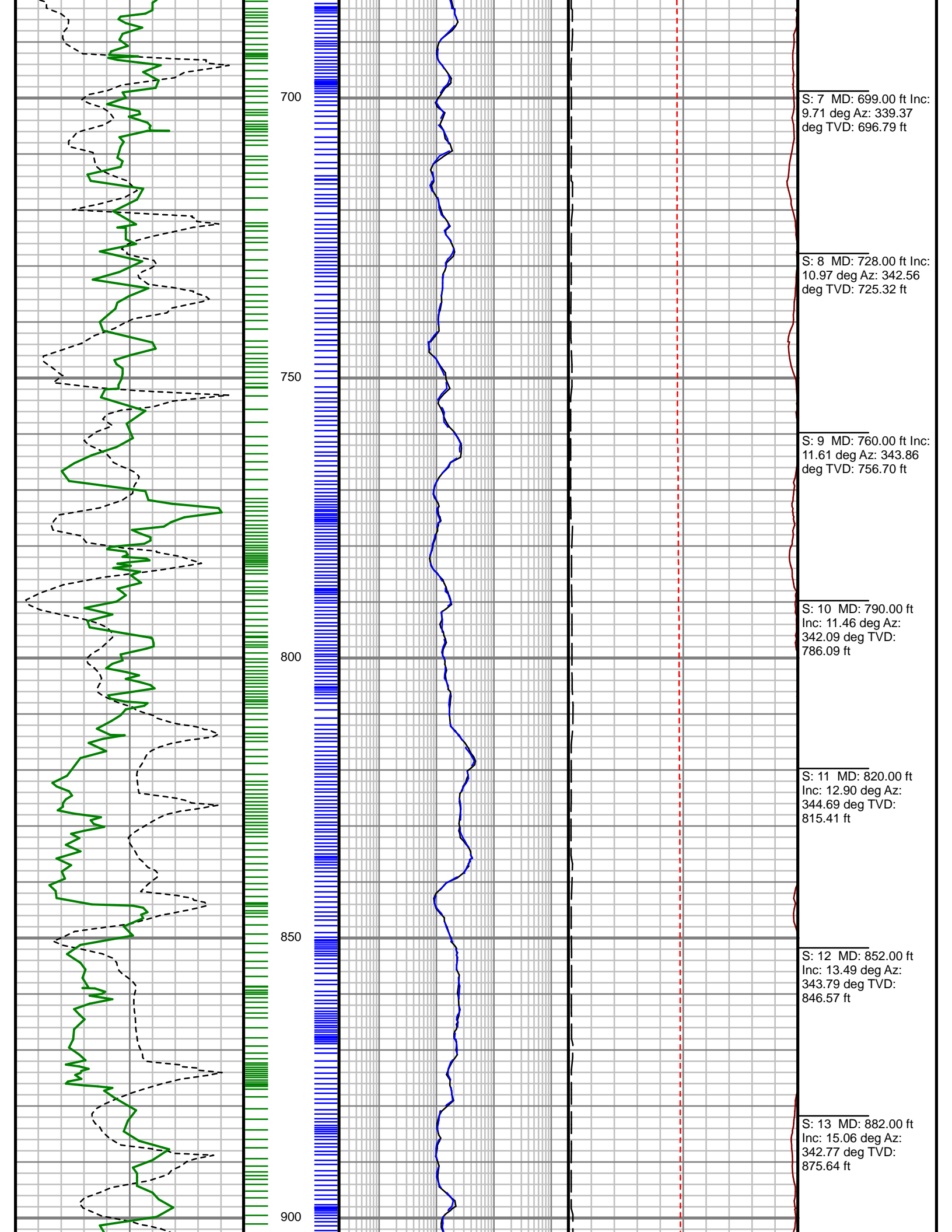
Run Data							
RUN NUMBER	MWD-001						
START DATE	07/14/2018						
START TIME	2100						
END DATE	7/15/2018						
END TIME	2300						
DEPTH IN (ft)	396						
DEPTH OUT (ft)	3900						
LOG TOP (ft)	396						
LOG BOTTOM (ft)	3870						
HOLE SIZE (in)	7.875						
MUD DATA @ (ft)	1560						
MUD TYPE	LSND						
DENSITY (lb / gal)	9.25						
VISCOSITY (s / qt)	34						
pH	10.5						
FLUID LOSS (cm ³ / 30)	20						
SALINITY (ppm)	1500						
Rm (ohmm @ deg F)	-						
Rmf (ohmm @ deg F)	-						
MAX TEMP (deg F)	129						
Rm @ MAX TEMP (ohmm)	-						
LWD ENGINEER #1	P.KNEPPER						
LWD ENGINEER #2	T.RELLERGERT						
LWD ENGINEER #3	J.BAASSIRI						
LOG WITNESS #1							
LOG WITNESS #2							

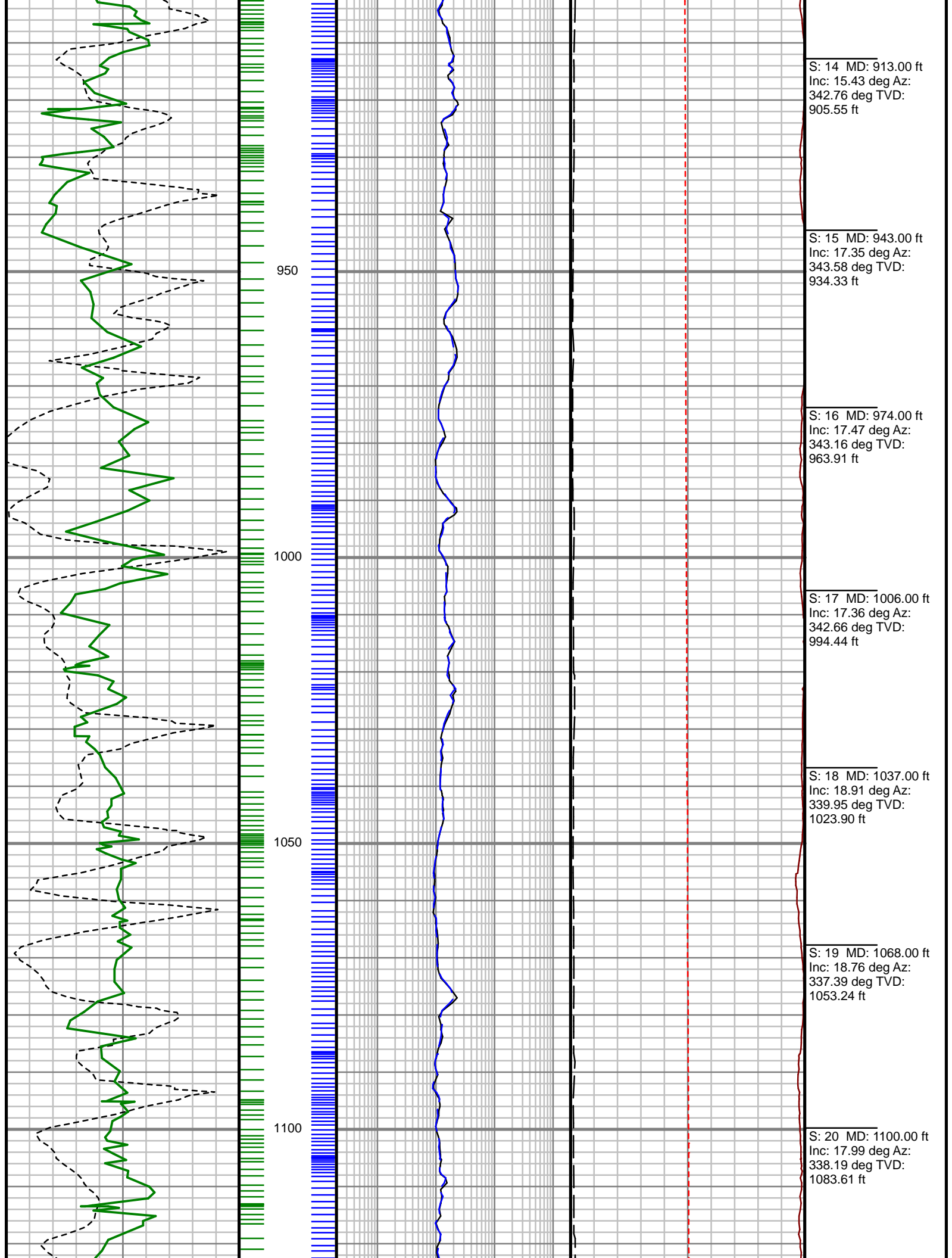
[illegible]

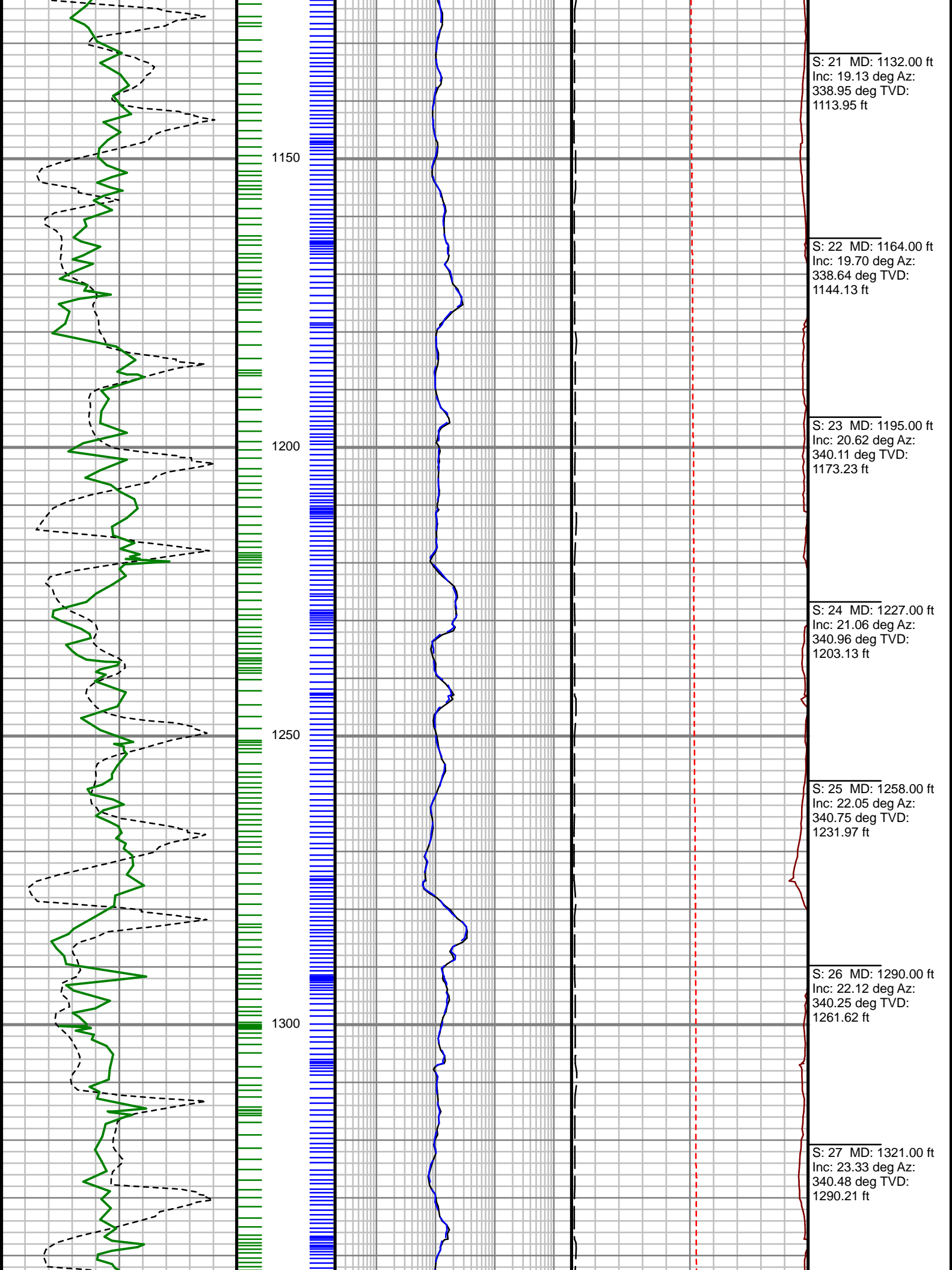
All interpretations are opinions based on inferences from electrical or other measurements and we cannot, and do not guarantee the accuracy or correctness of any interpretations, and we shall not, except in the case of gross or willful negligence on our part, be liable or responsible for any loss, costs, damages or expenses incurred or sustained by anyone resulting from any interpretation made by any of our officers, agents or employees. These interpretations are also subject to our general terms and conditions as set out in our current price schedule.

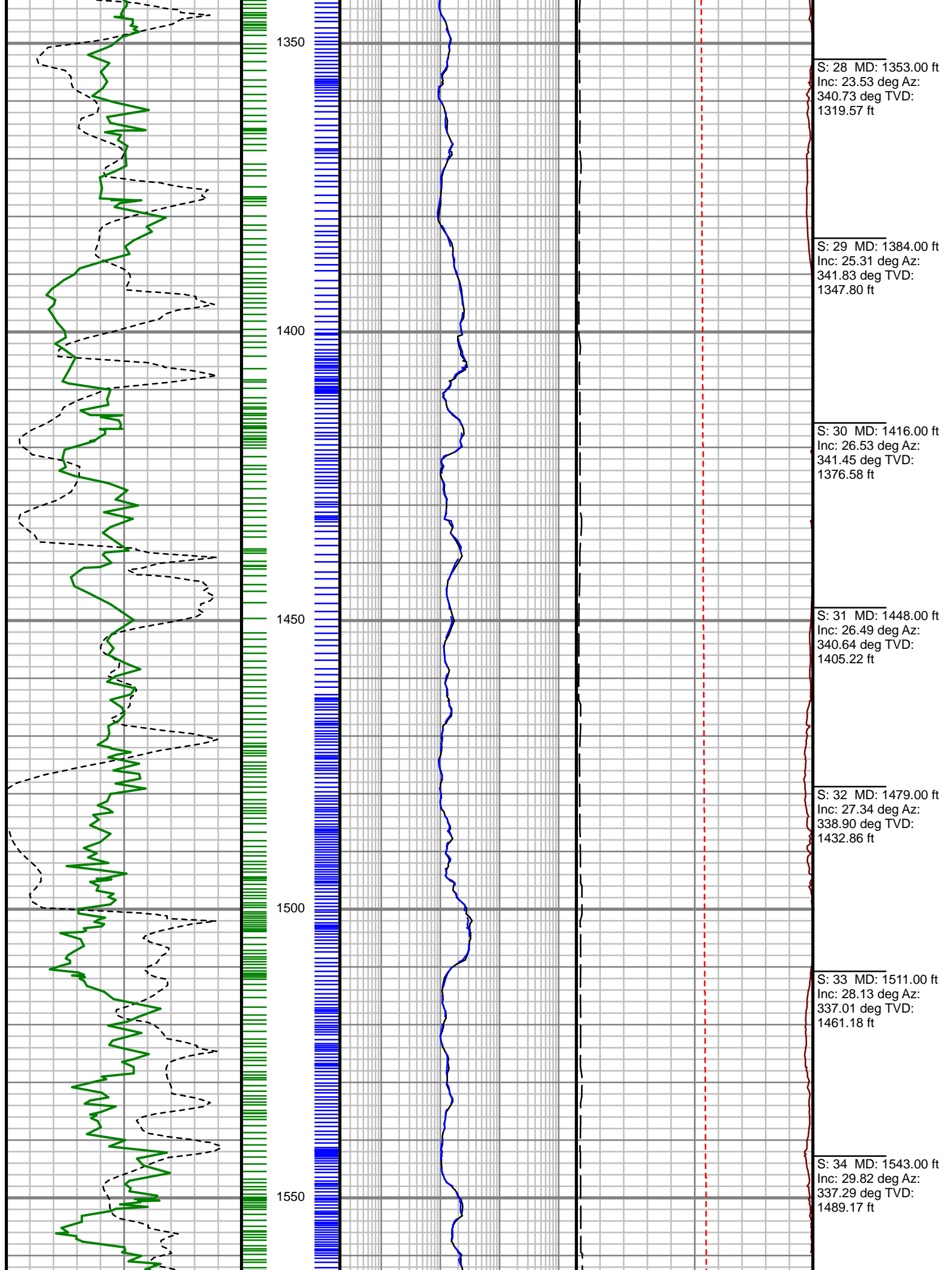
FIELD COPY				
<div>Rate of Penetration (ROP)</div> <div>-----</div> <div>1000 Unit = ft/hr 0</div> <div>GAIN - Gamma Ray (G-GR)</div> <div>-----</div> <div>0 Unit = aapi 150</div>	<div>MEASURED DEPTH</div> <div>1:240 (ft)</div>	<div>Phase Shift Resistivity, 23" (PR23)</div> <div>-----</div> <div>0.2 Unit = ohmm 2000</div> <div>Phase Shift Resistivity, 33" (PR33)</div> <div>-----</div> <div>0.2 Unit = ohmm 2000</div>	<div>FET of Resistivity (FETR)</div> <div>-----</div> <div>0 Unit = hr 10</div> <div>Tool Temperature (T-TEMP)</div> <div>-----</div> <div>0 Unit = °F 200</div> <div>Attenuation Conductivity, 33" (AC33)</div> <div>-----</div> <div>1000 Unit = mmho/m 0</div>	<div>Comments</div>
				<div>S: 1 MD: 449.00 ft Inc: 2.93 deg Az: 314.18 deg TVD: 448.80 ft</div>

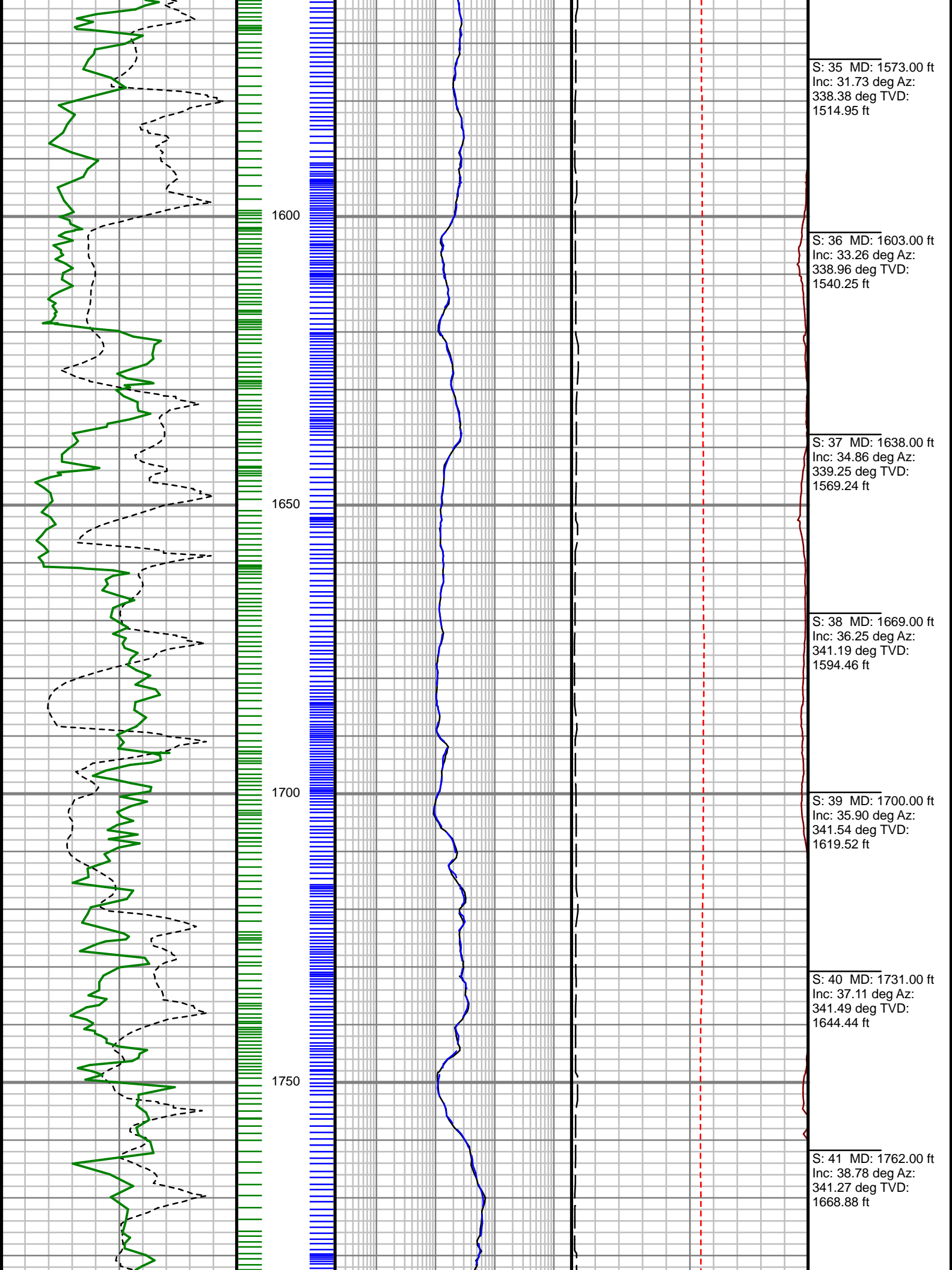


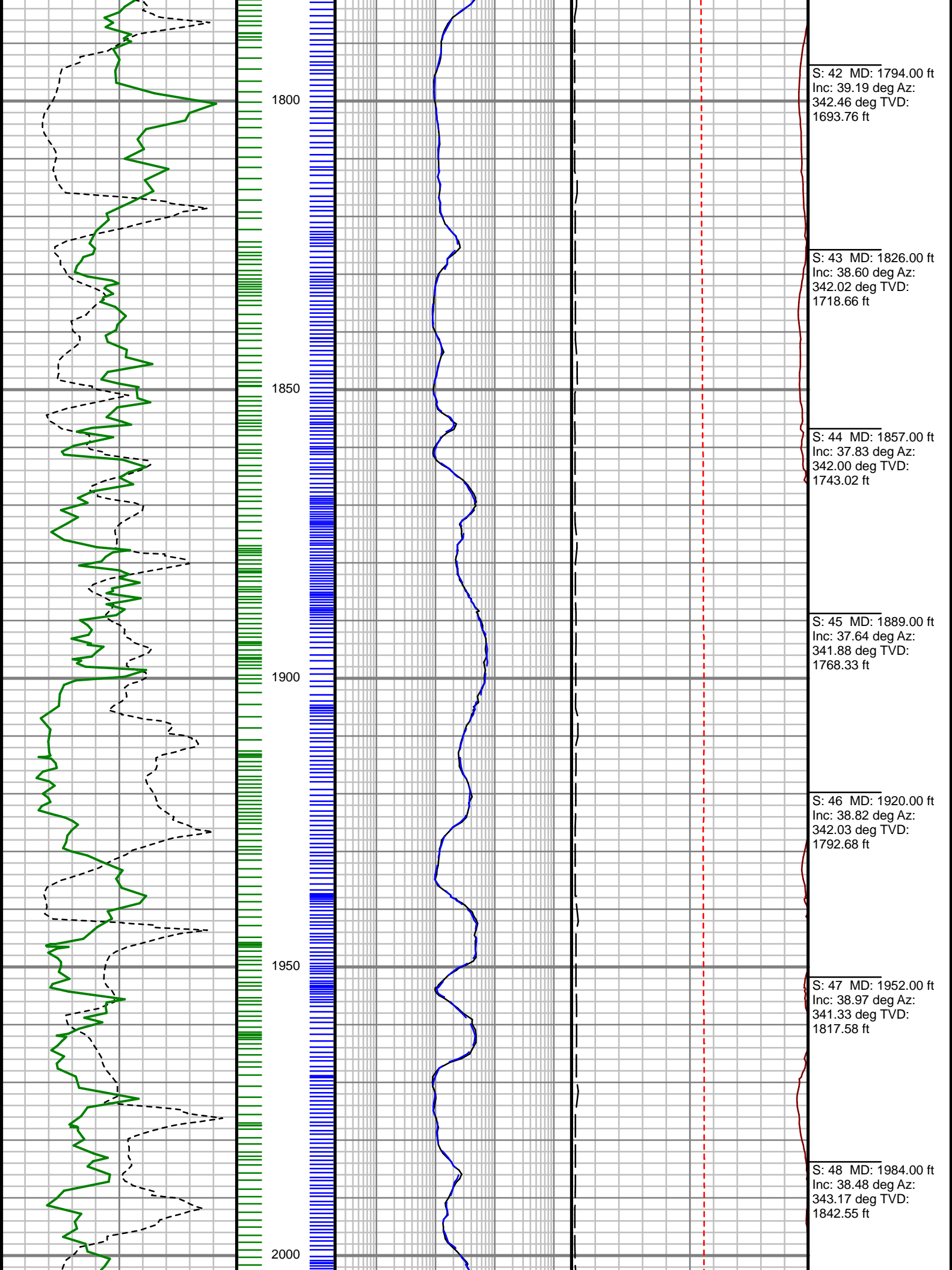


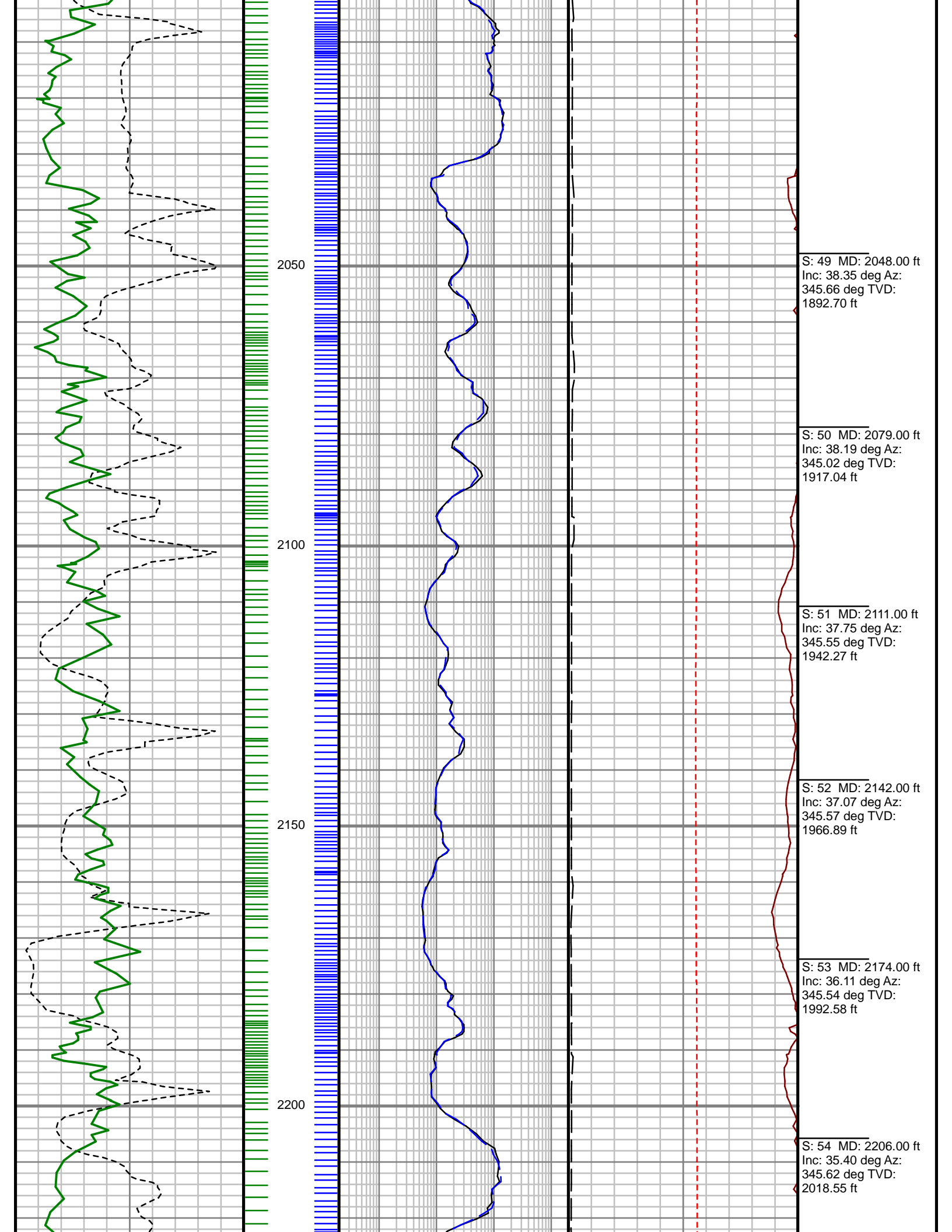


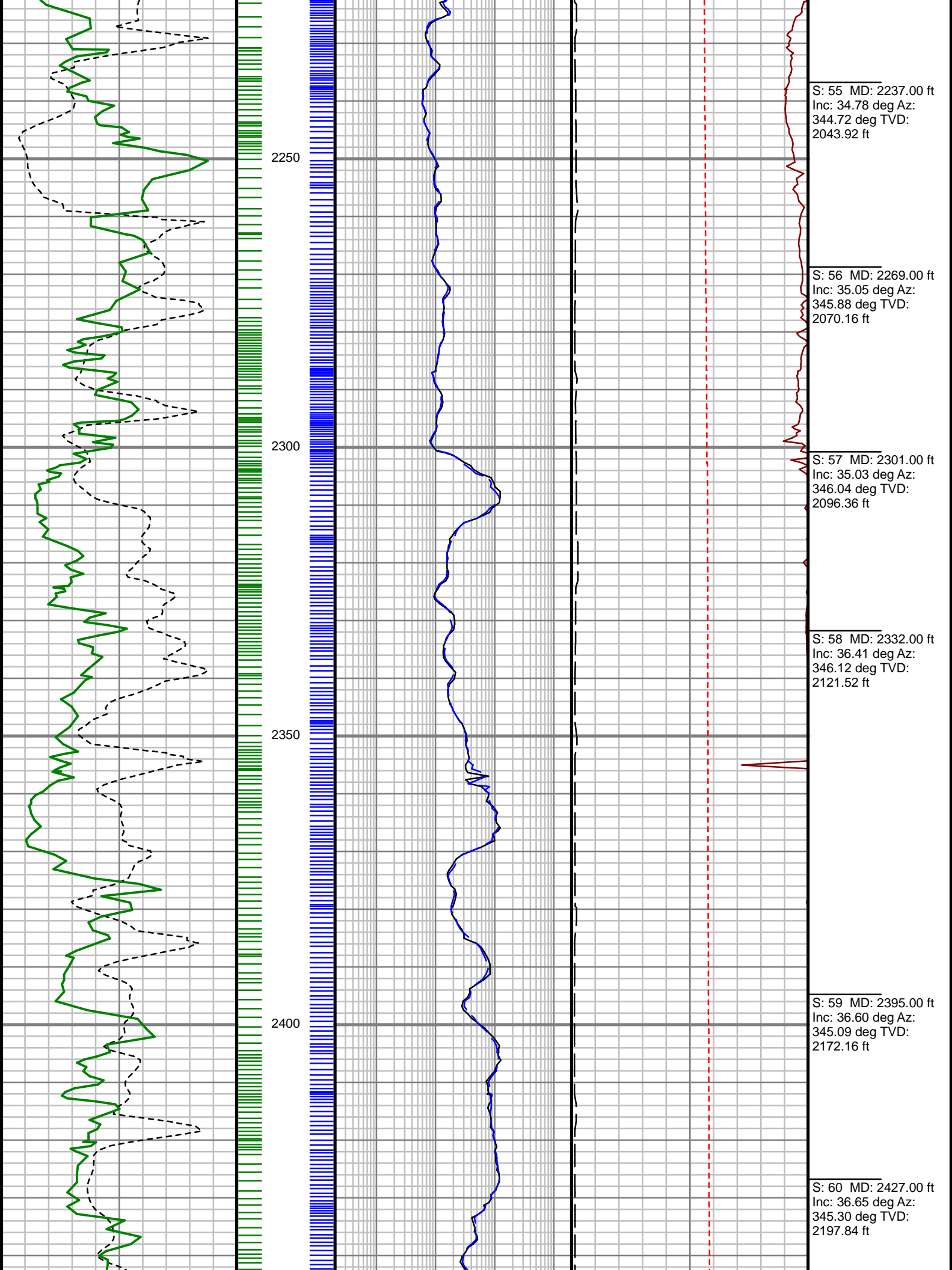


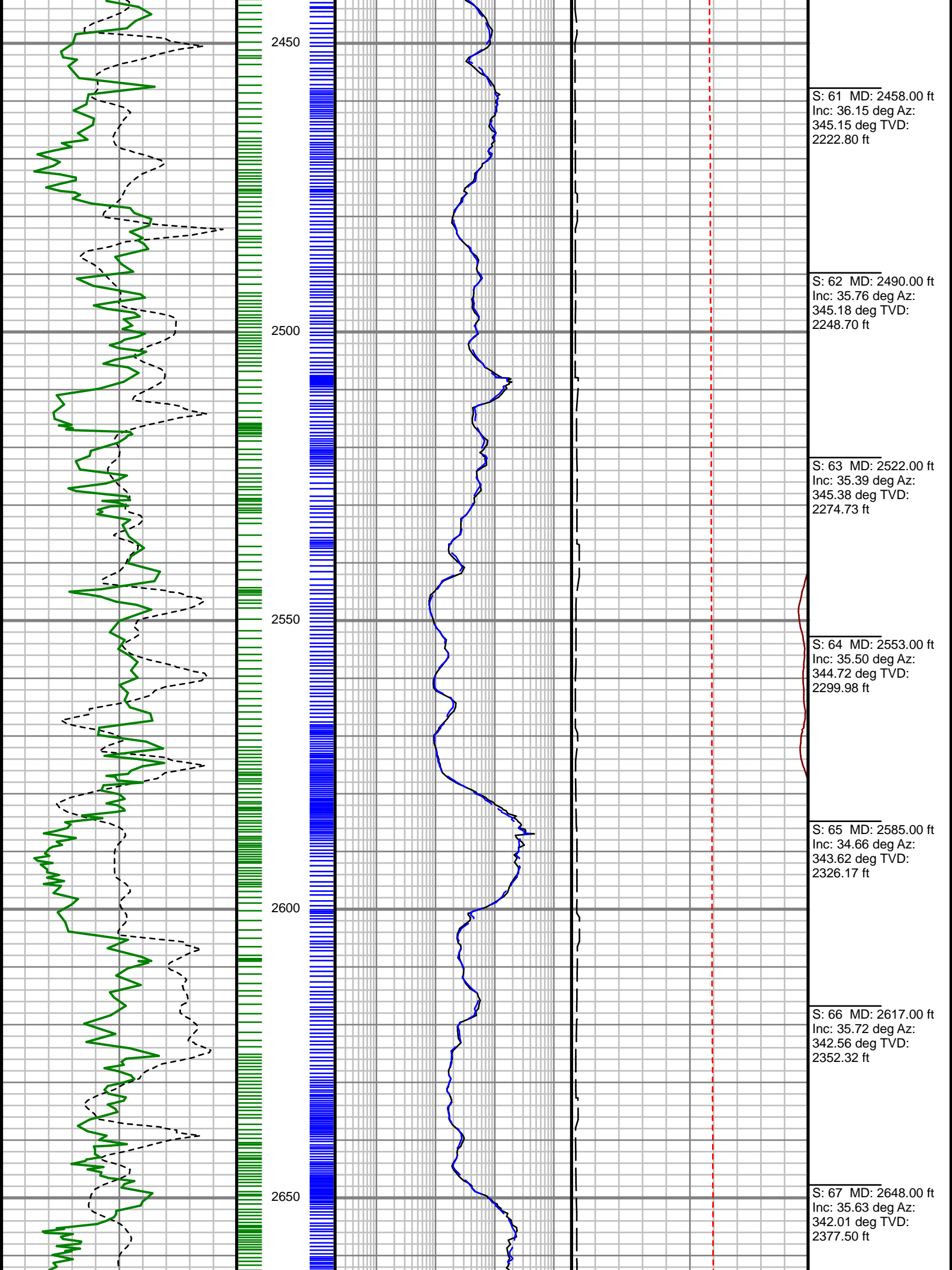


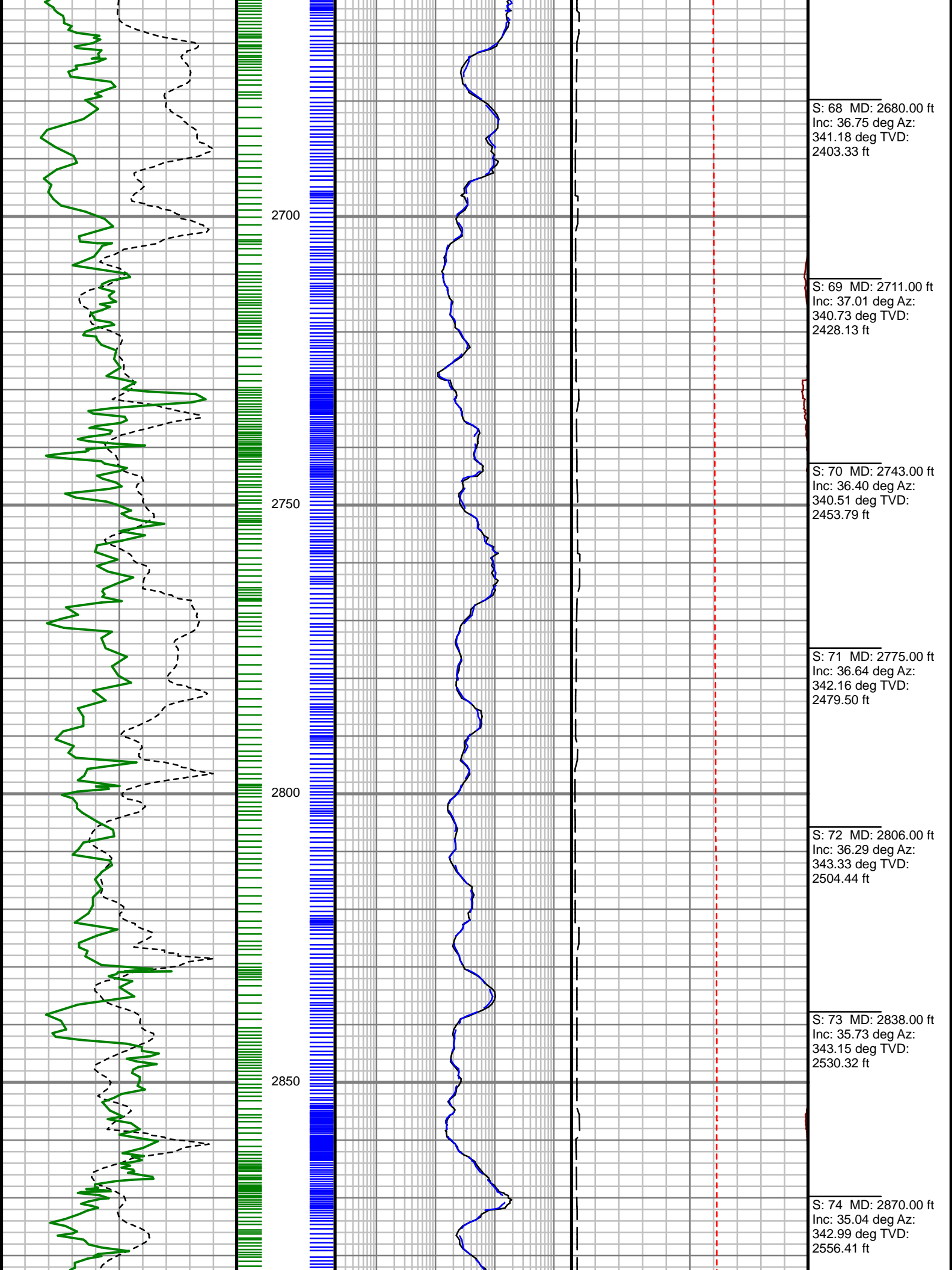


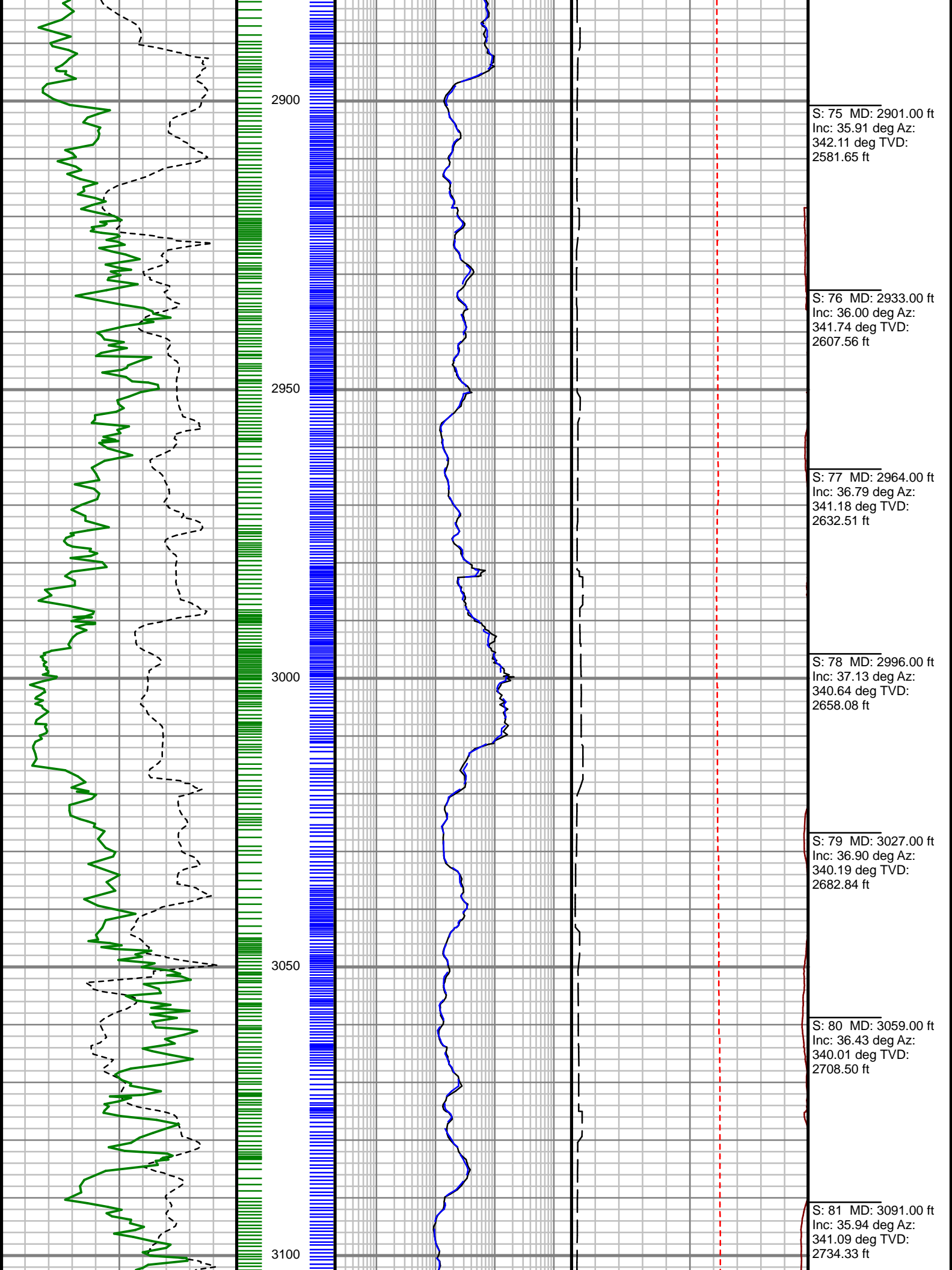


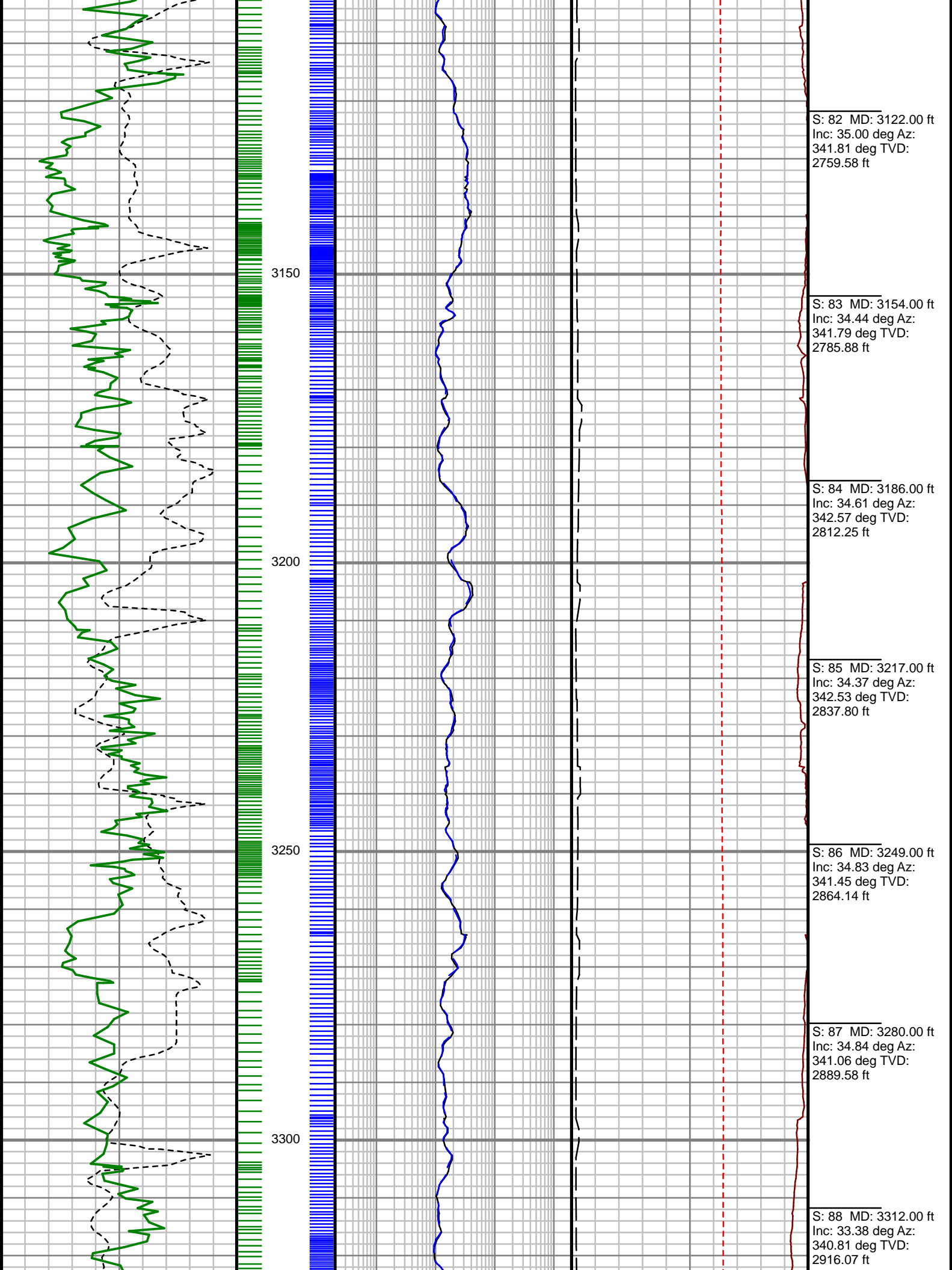


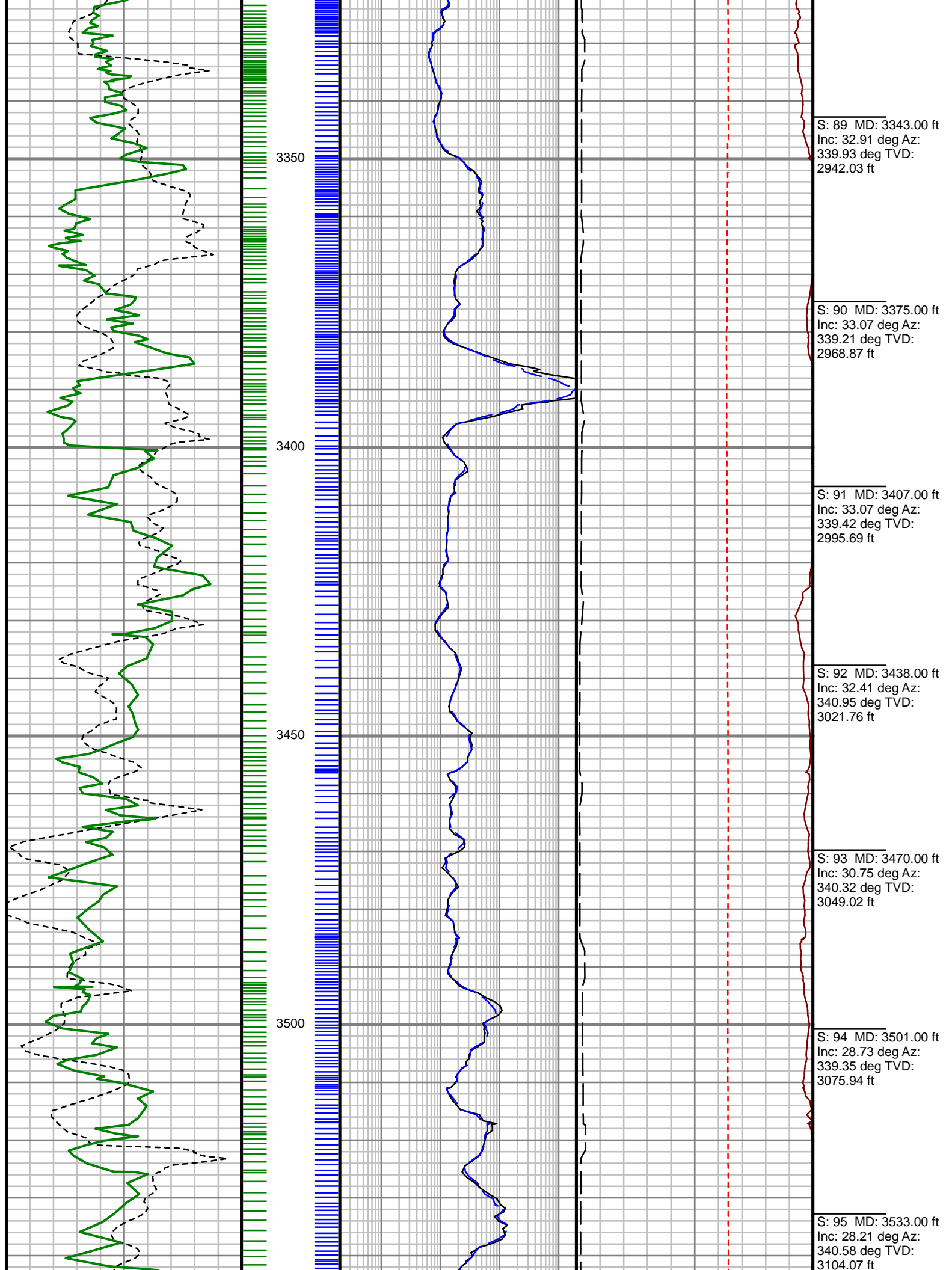


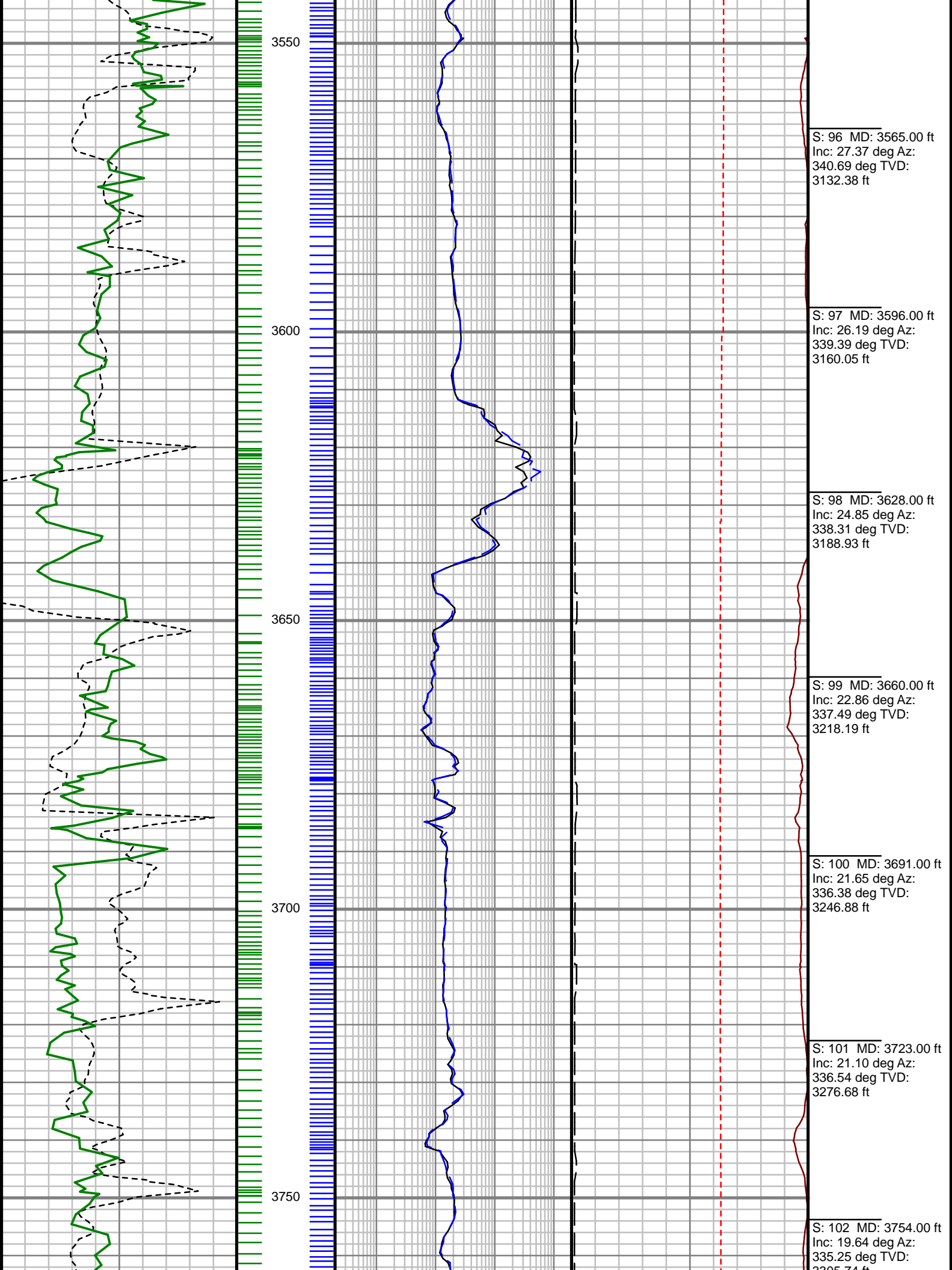


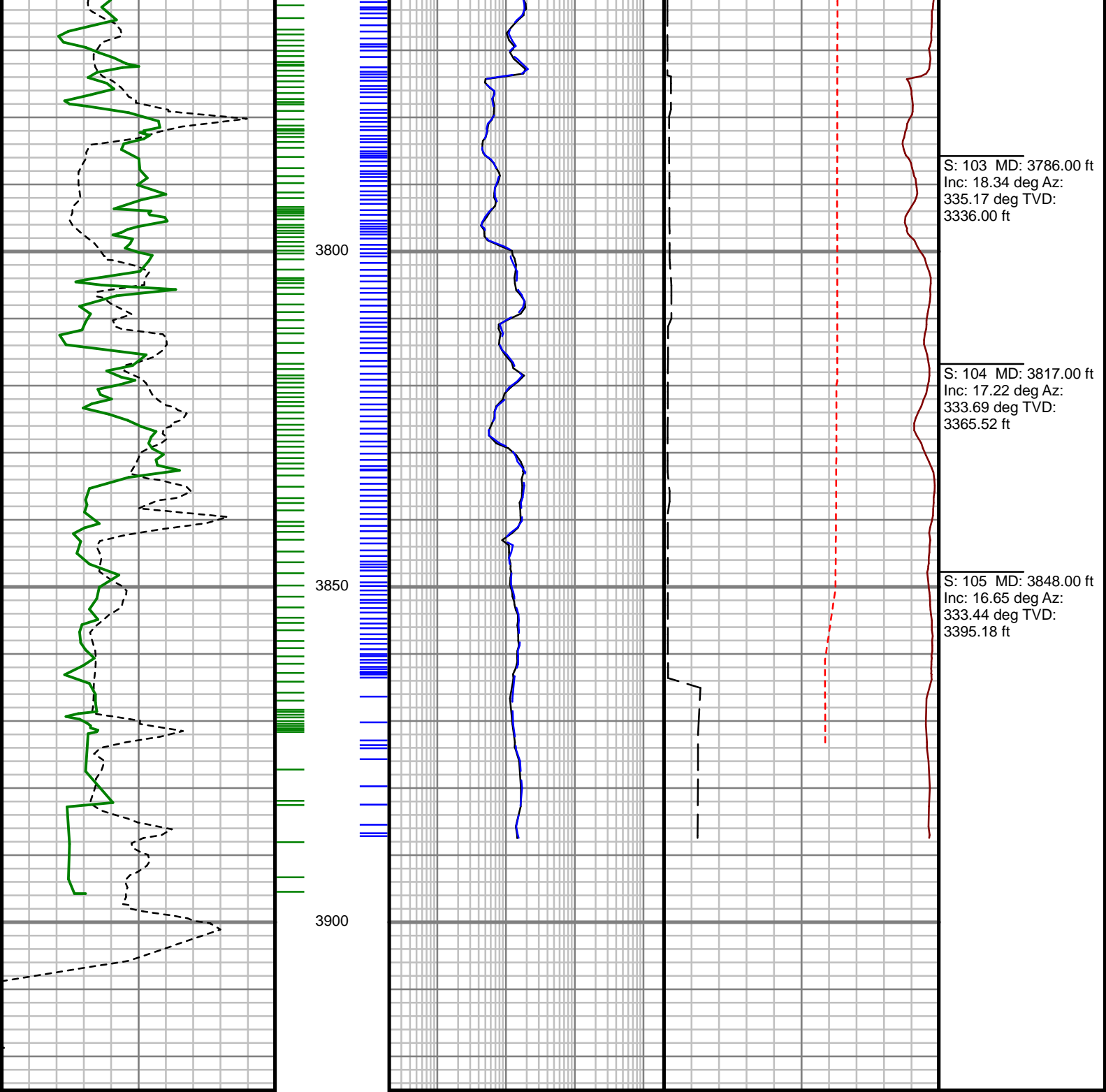












S: 103 MD: 3786.00 ft
Inc: 18.34 deg Az:
335.17 deg TVD:
3336.00 ft

S: 104 MD: 3817.00 ft
Inc: 17.22 deg Az:
333.69 deg TVD:
3365.52 ft

S: 105 MD: 3848.00 ft
Inc: 16.65 deg Az:
333.44 deg TVD:
3395.18 ft

GAIN - Gamma Ray (G-GR)

0Unit = aapi150

Rate of Penetration (ROP)

1000Unit = ft/hr0

MEASURED DEPTH
1,240 (ft)

Phase Shift Resistivity, 33" (PR33)

0.2Unit = ohmm2000

Phase Shift Resistivity, 23" (PR23)

0.2Unit = ohmm2000

Attenuation Conductivity, 33" (AC33)

1000Unit = mmho/m0

Tool Temperature (T-TEMP)

0Unit = °F200

FET of Resistivity (FETR)

0Unit = hr10

Comments



GAMMA RAY
RESISTIVITY

5" = 100' MD