
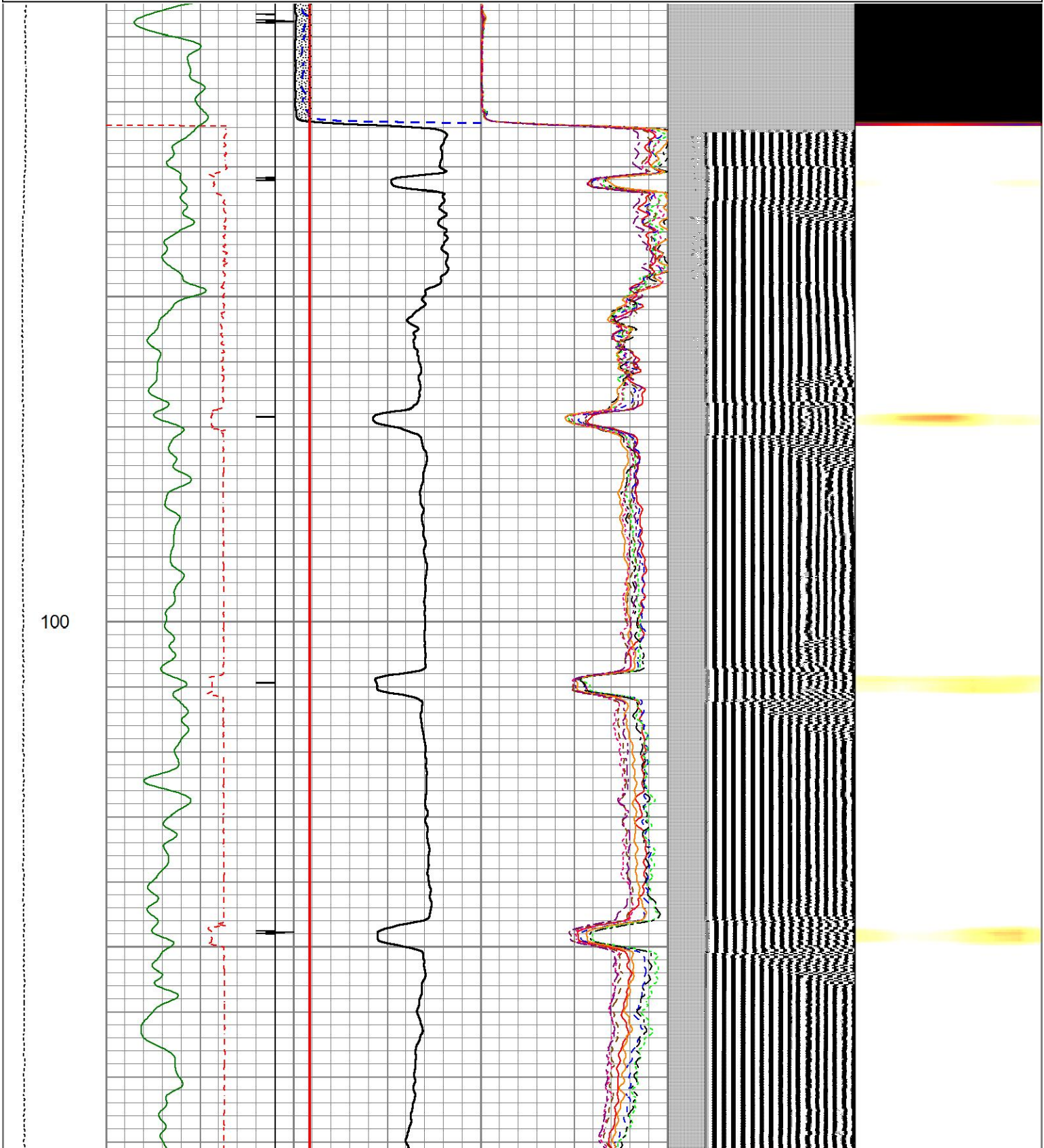
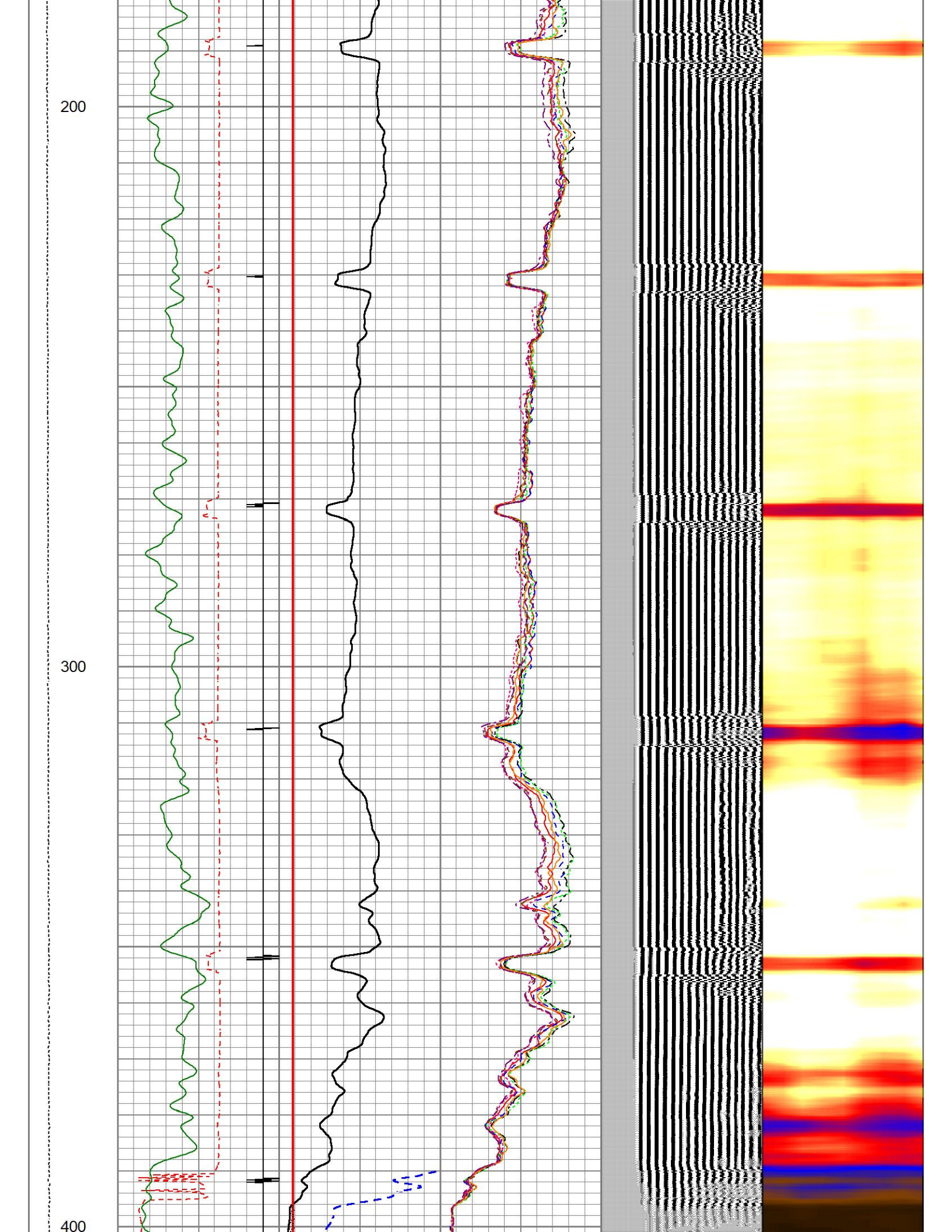
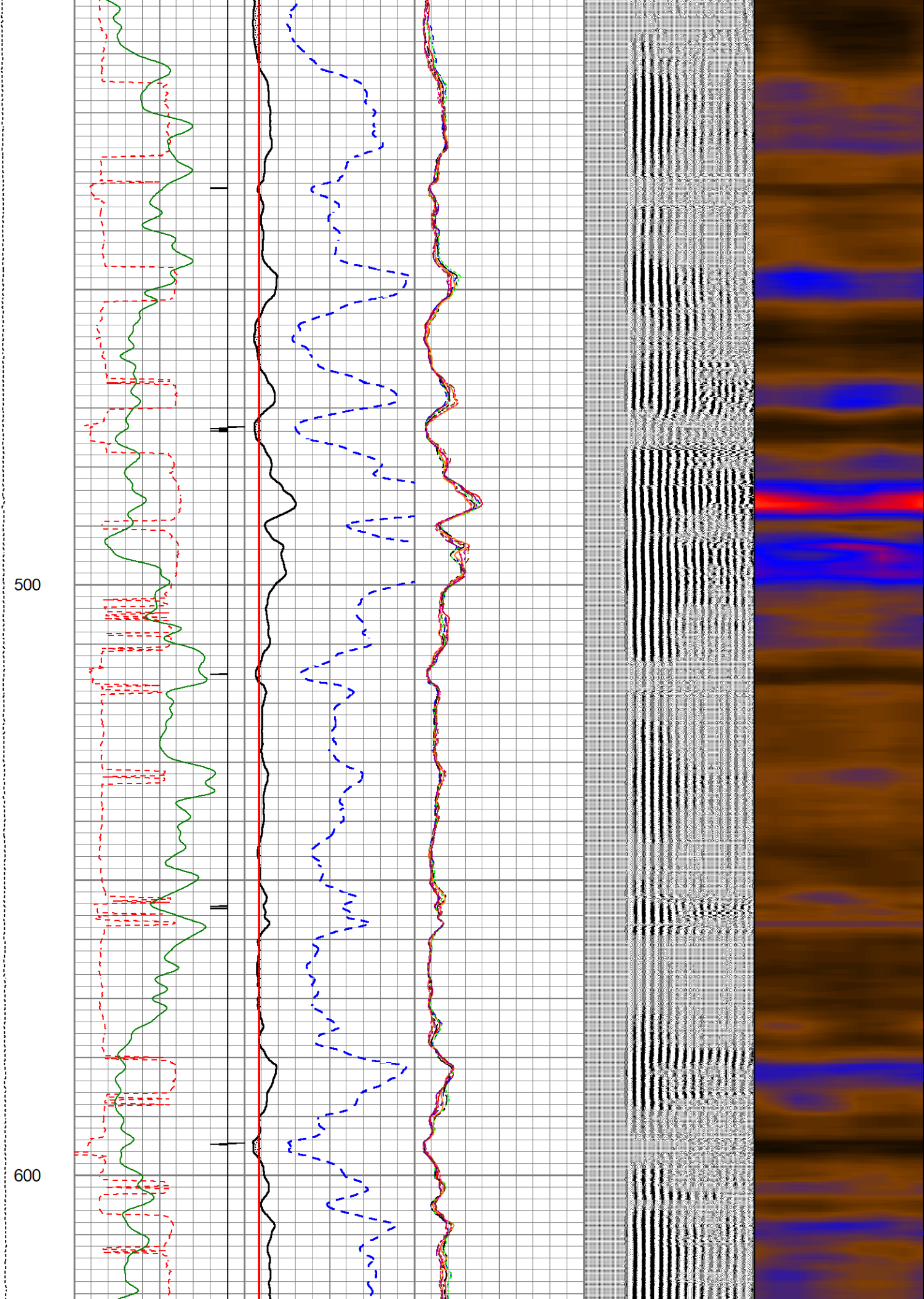


Database File	jaques 11.db
Dataset Pathname	pass3.3
Presentation Format	rcblsect
Dataset Creation	Tue Jul 24 10:13:10 2018
Charted by	Depth in Feet scaled 1:240

Charted by				Depth in Feet scaled 1:240											
LTEN	345	TT (usec)	245	0	AMP (mV)	100	0	AMPS1	120	200	VDL (usec)	1200	1	Cement Map	8
0	(lb1450	-9	CCL	1	Amplifide Amplitude		0	AMPS2	120						
		0	GR (GAPI)	200	0	(mV)	20	0	AMPS3	120					
				0	TEMP (degF)		200	0	AMPS4	120					
								0	AMPS5	120					
								0	AMPS6	120					
								0	AMPS7	120					
								0	AMPS8	120					

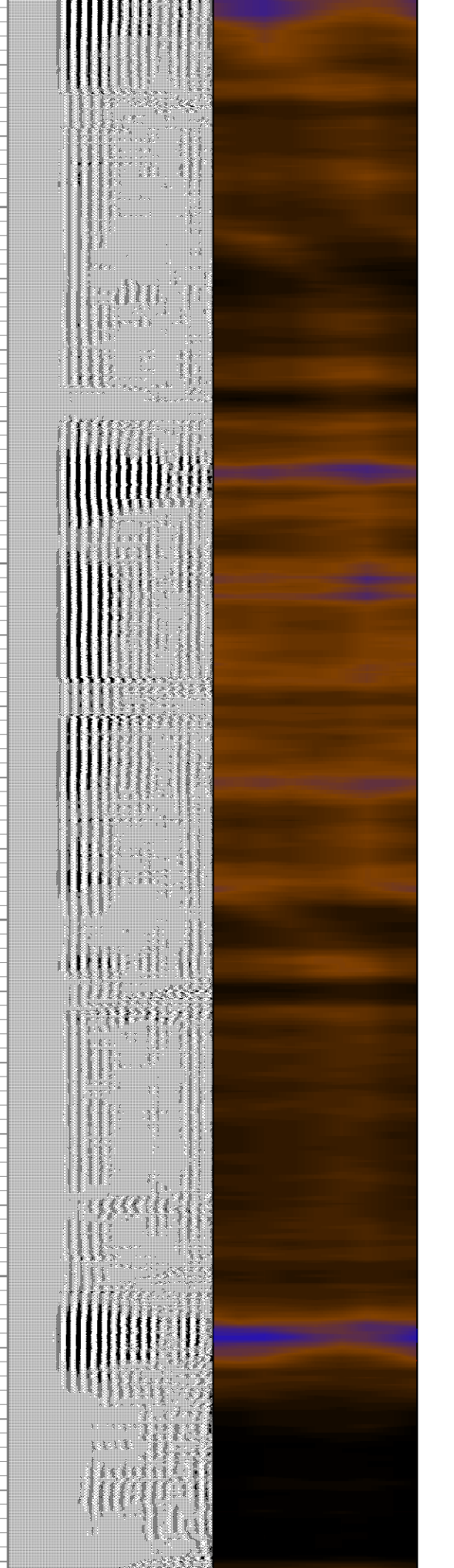
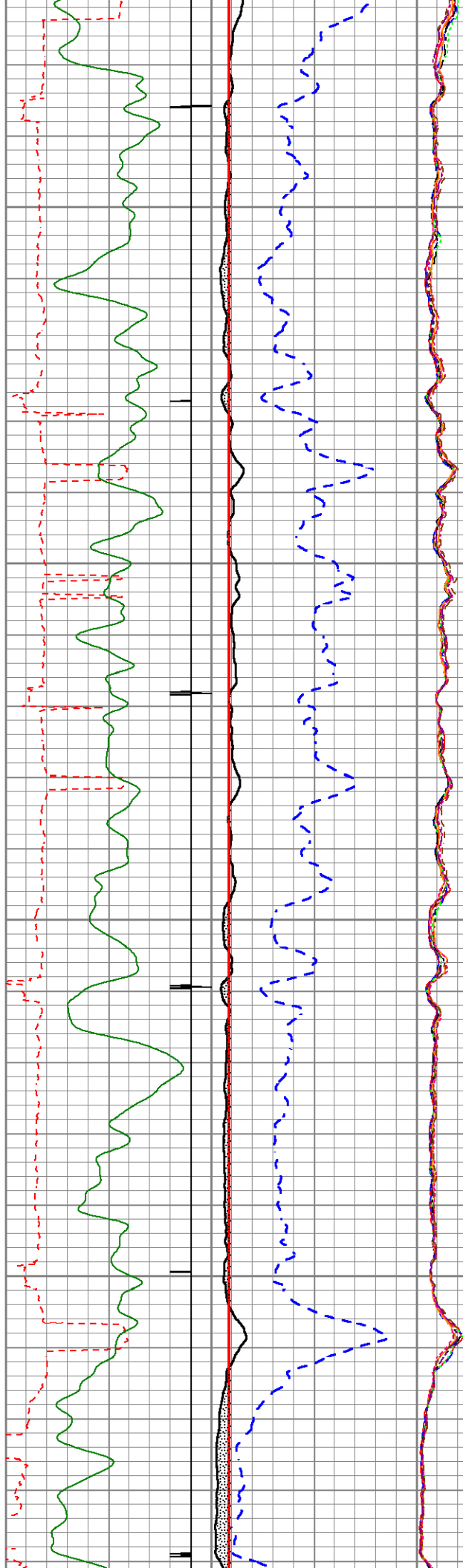






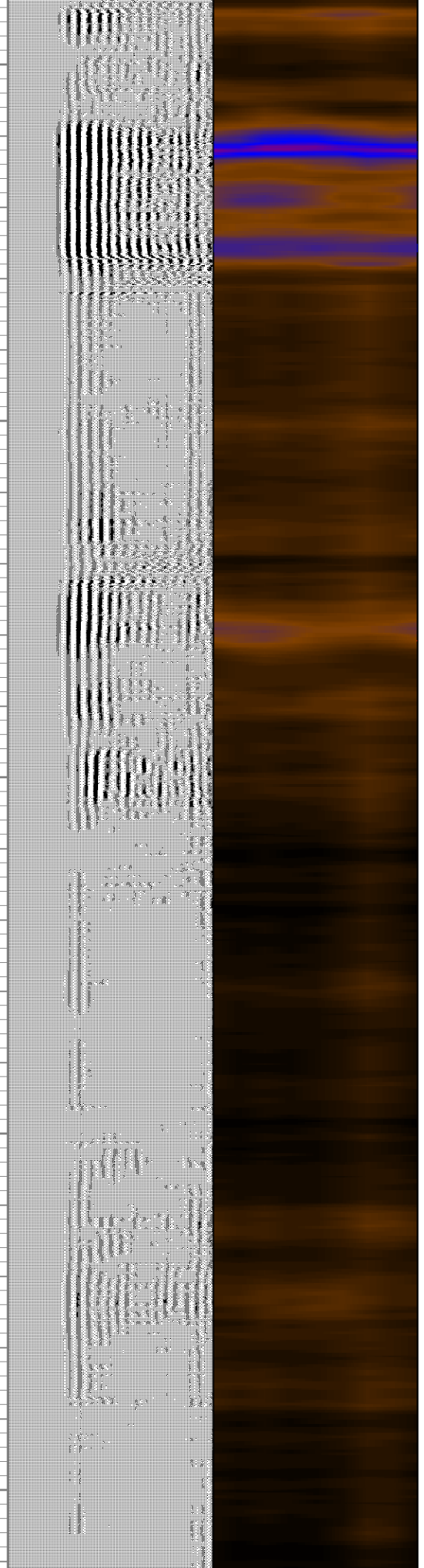
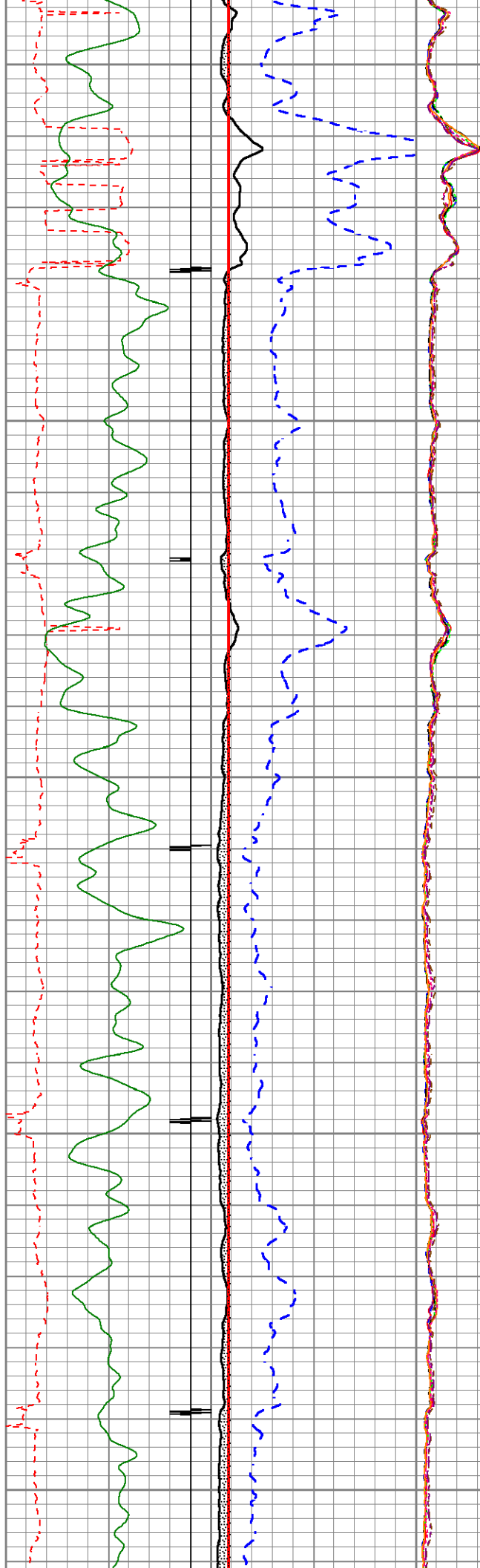
700

800



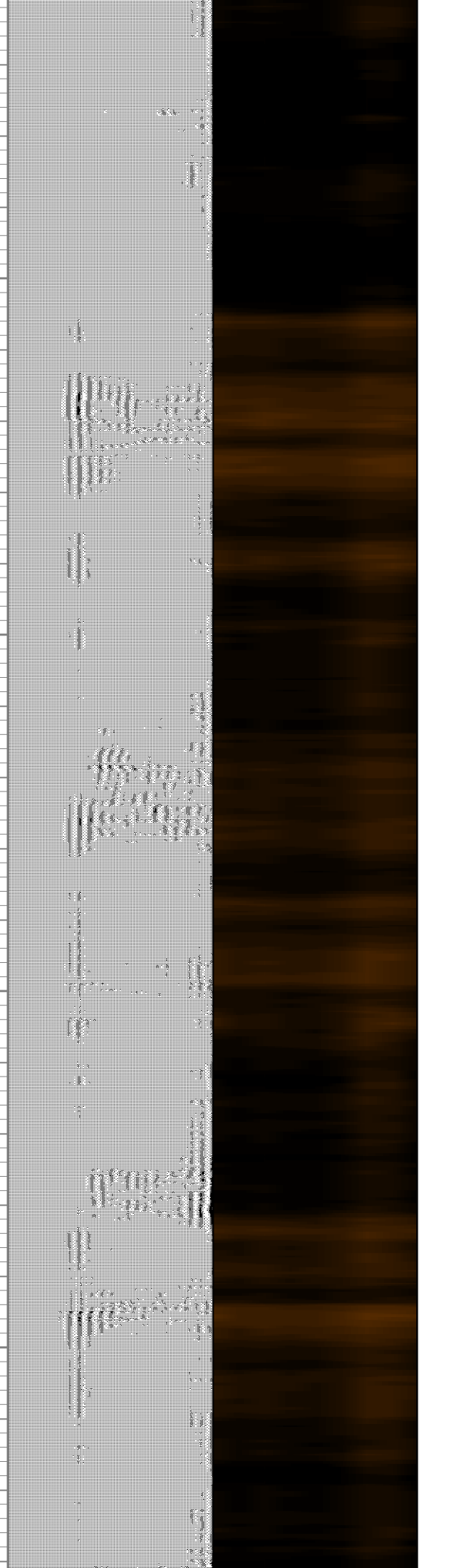
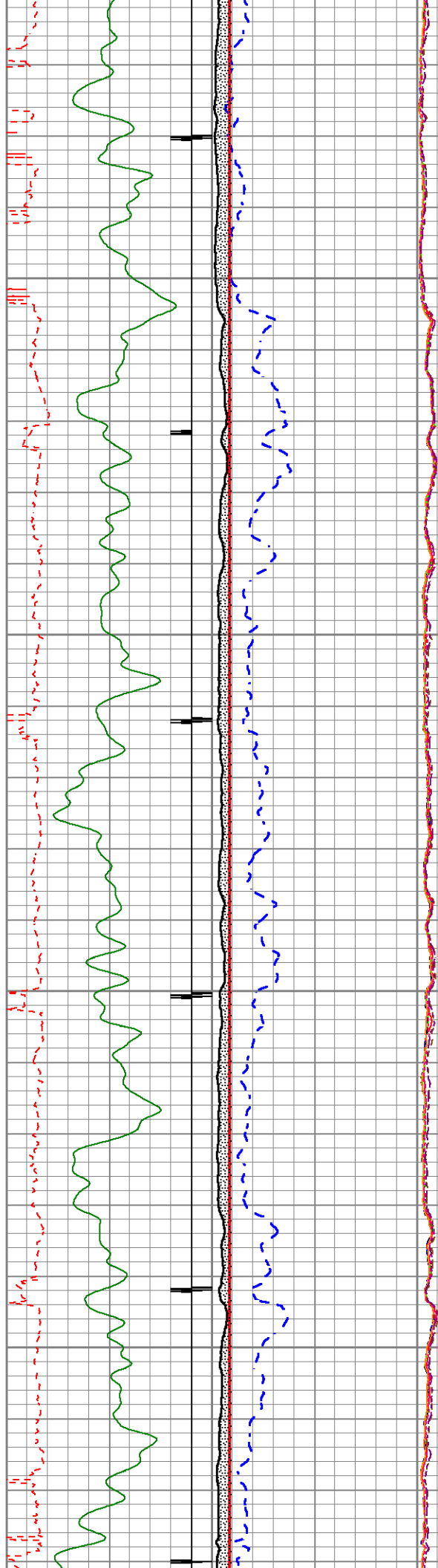
900

1000



1100

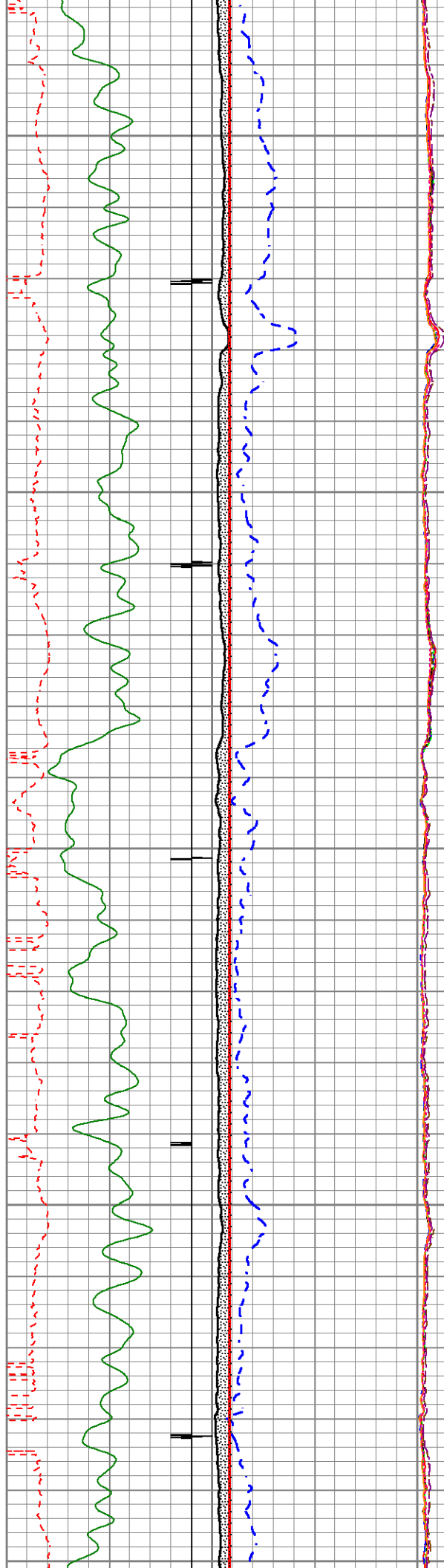
1200



1300

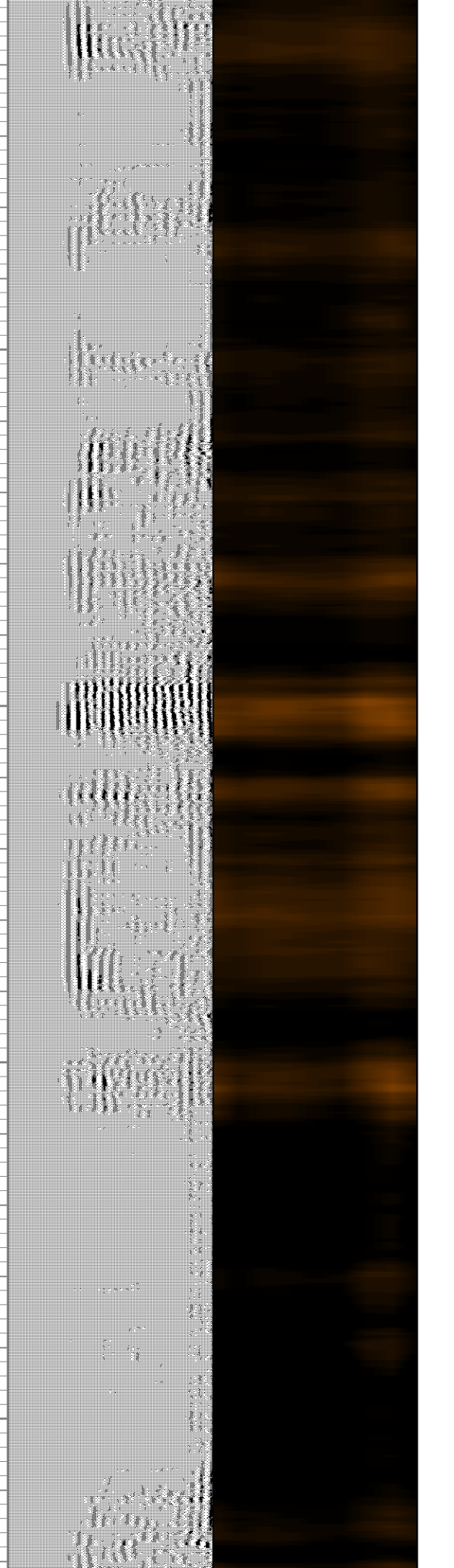
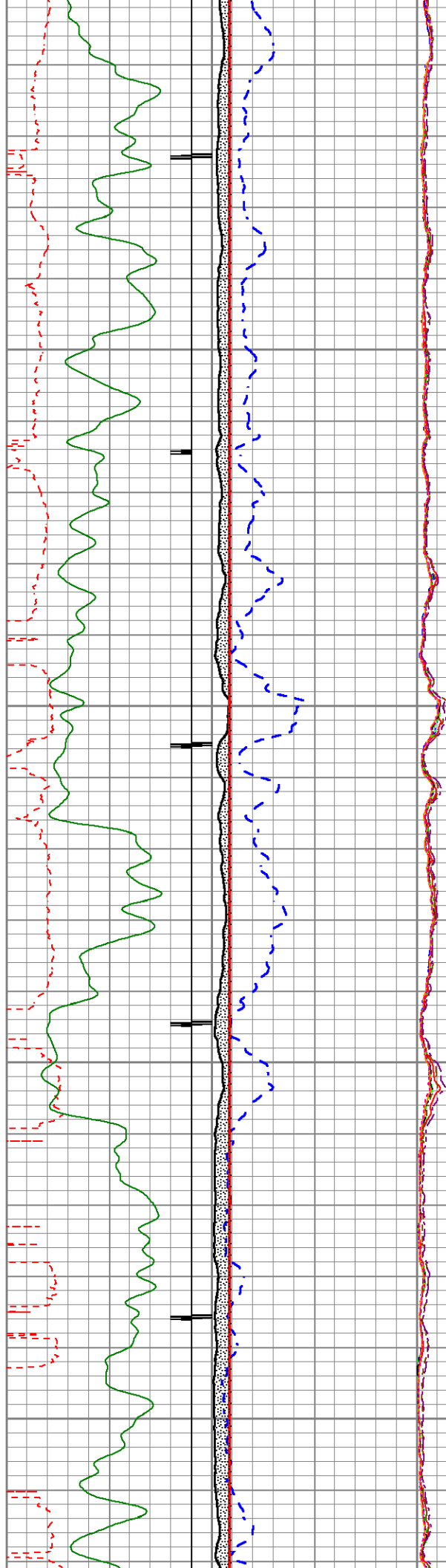
1400

1500



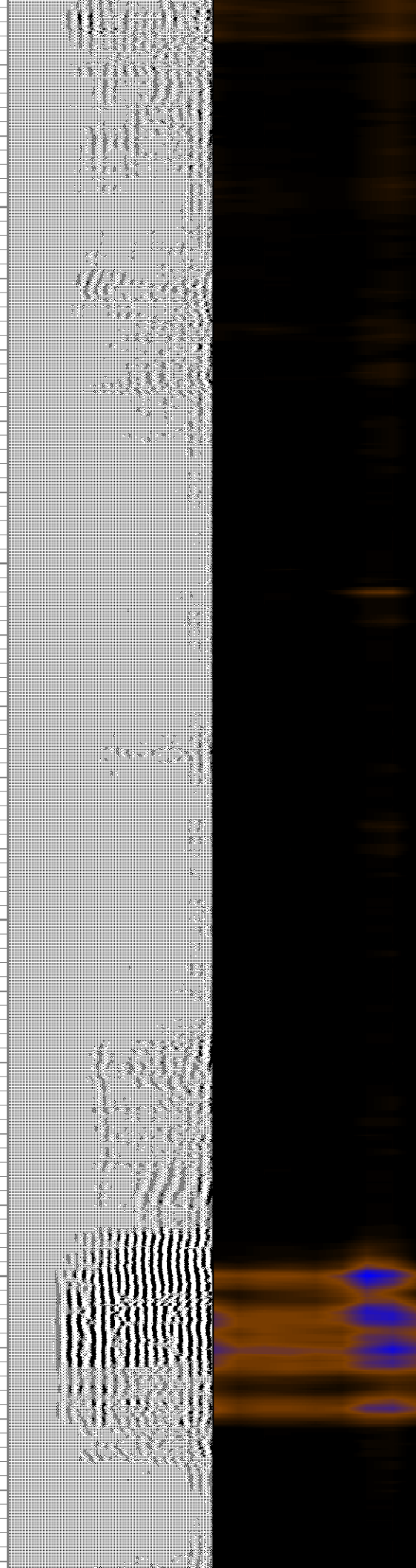
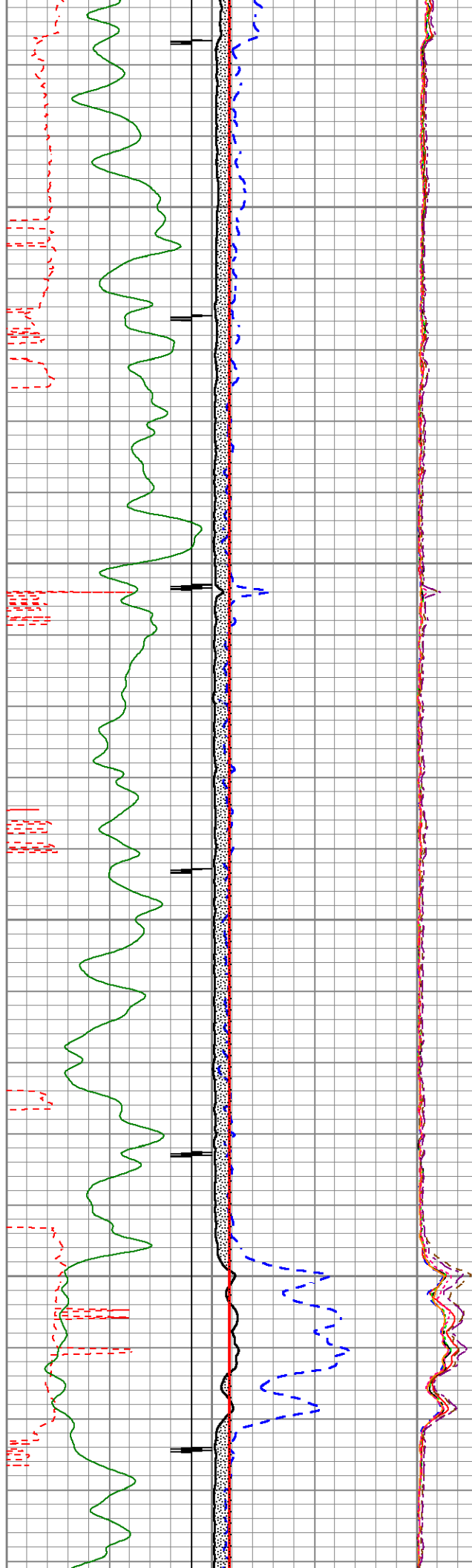
1600

1700



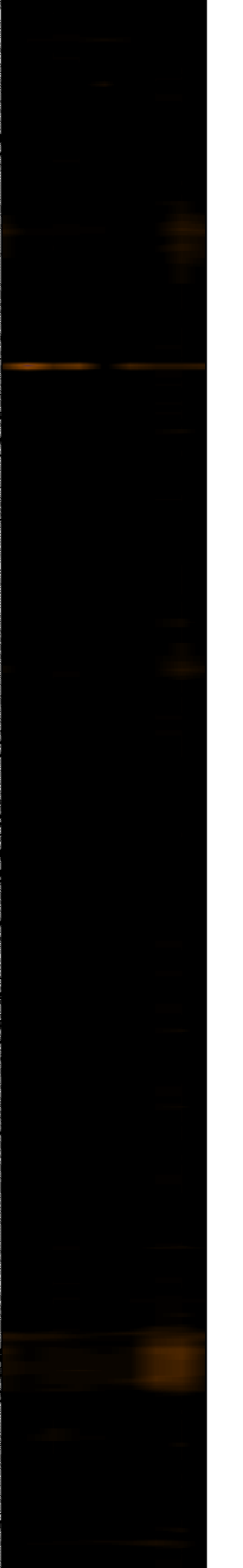
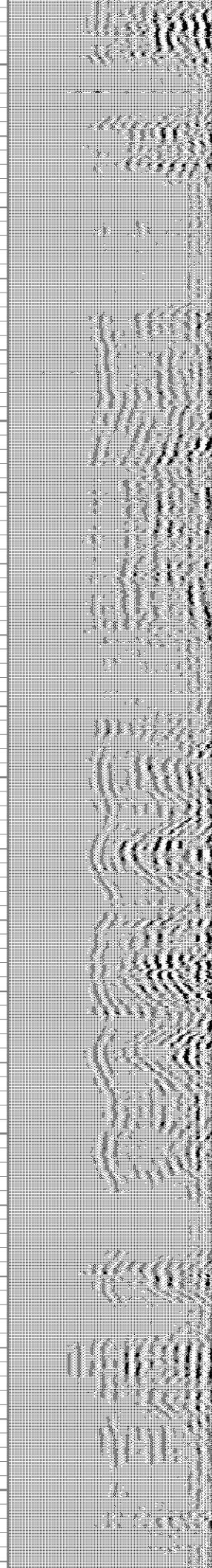
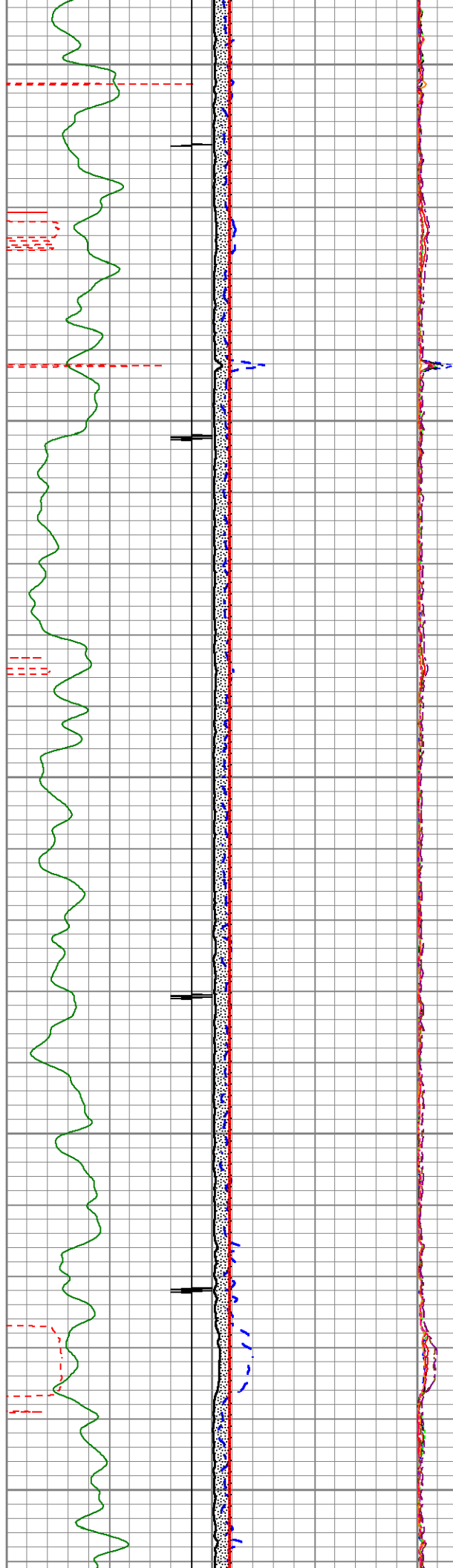
1800

1900



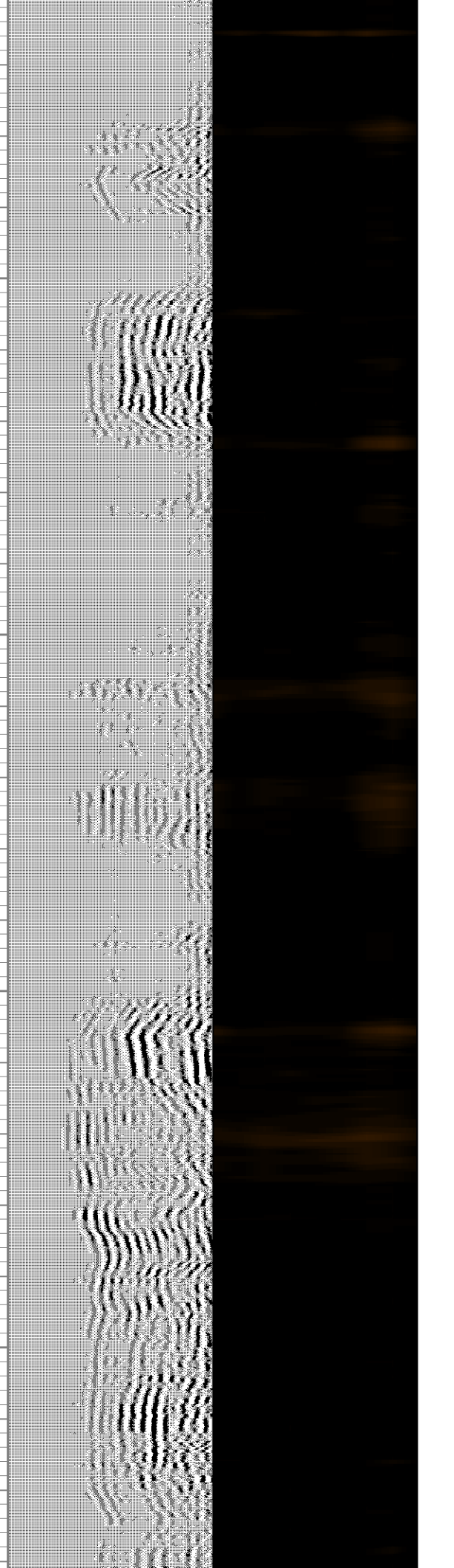
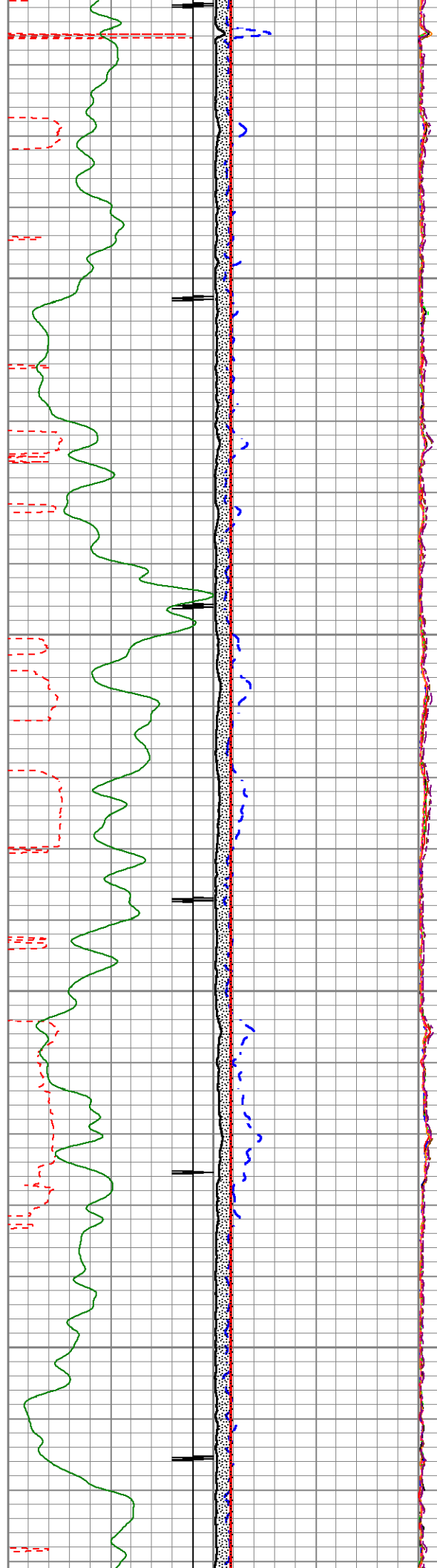
2000

2100



2200

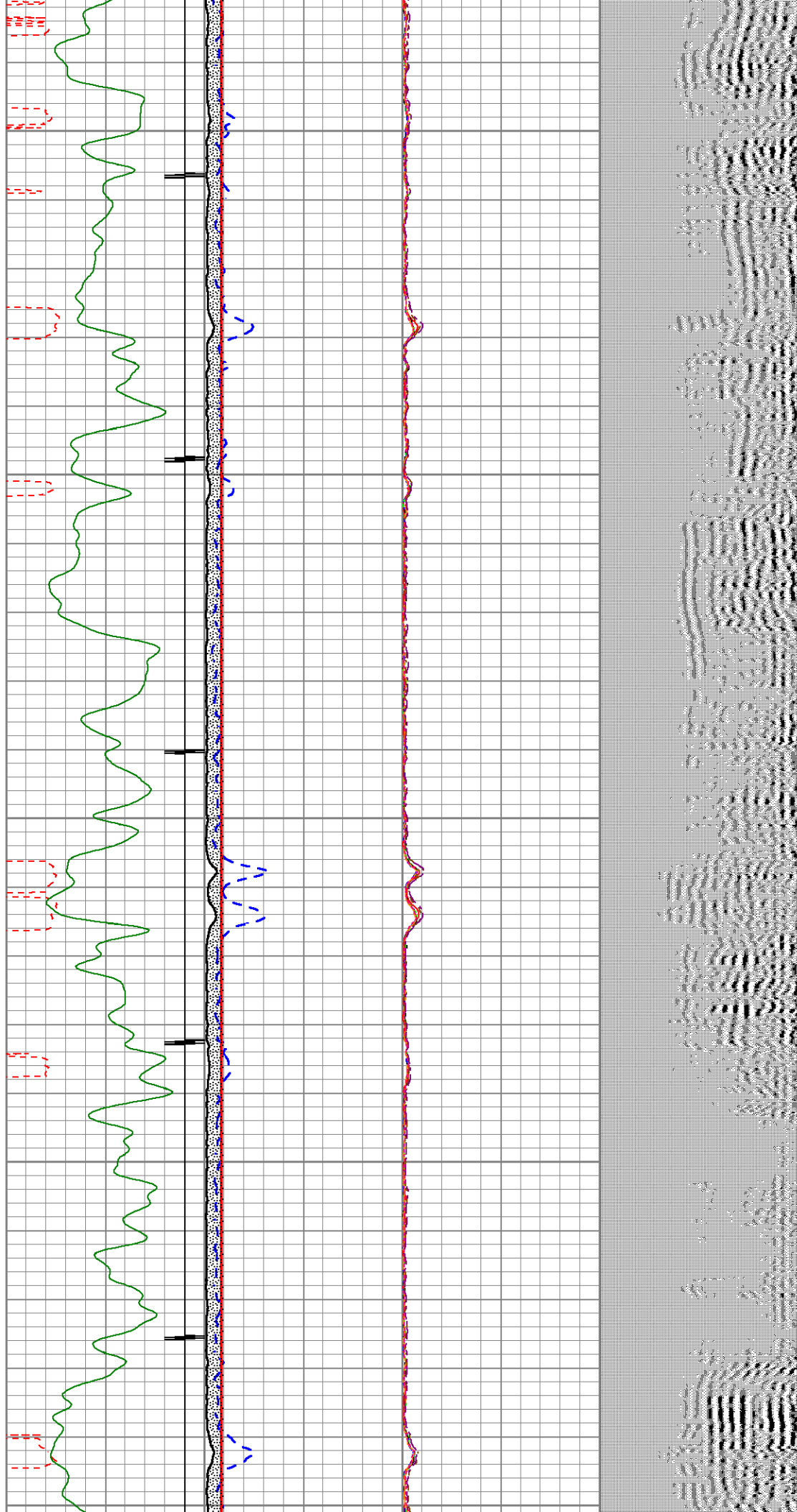
2300



2400

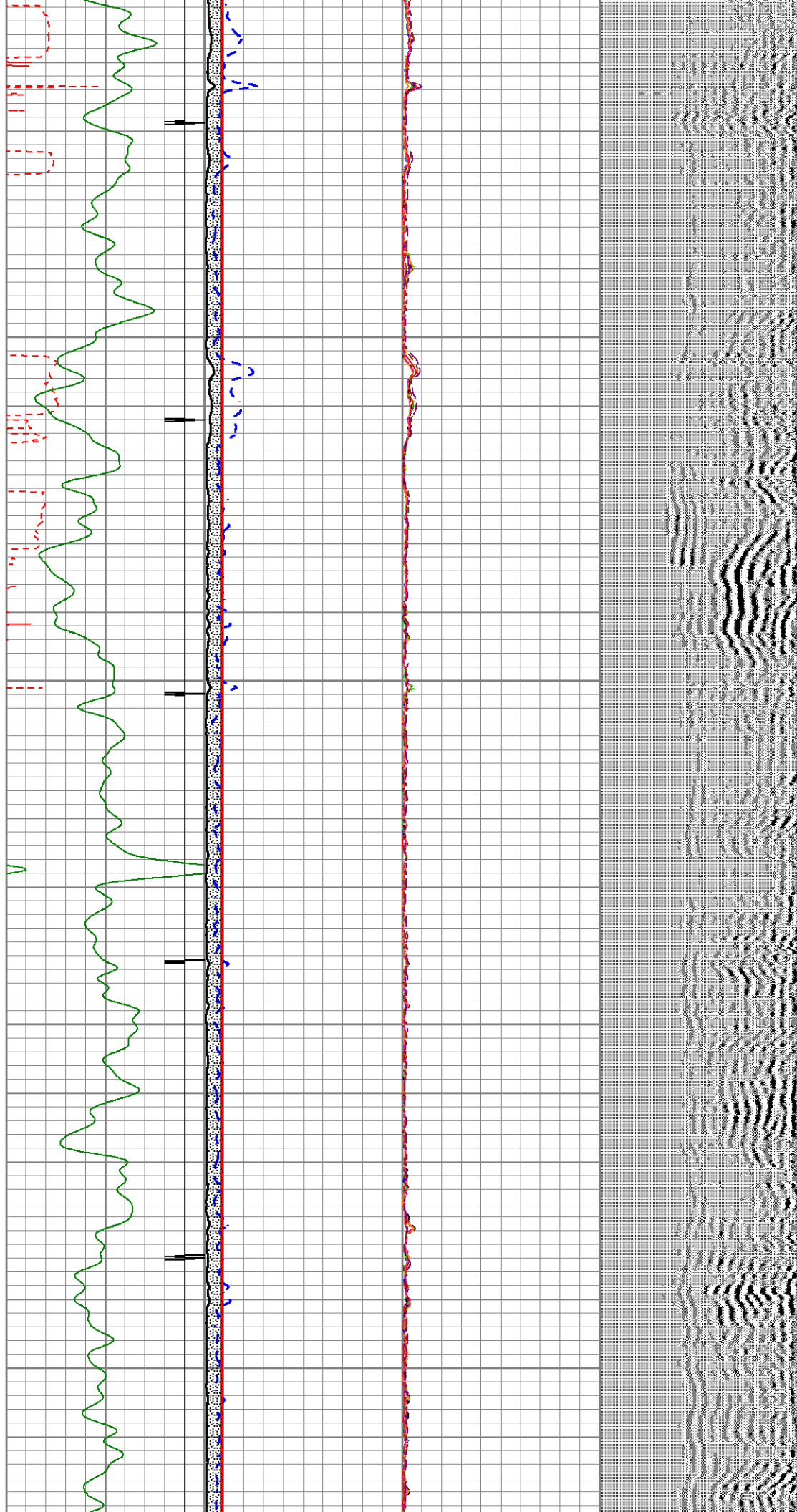
2500

2600



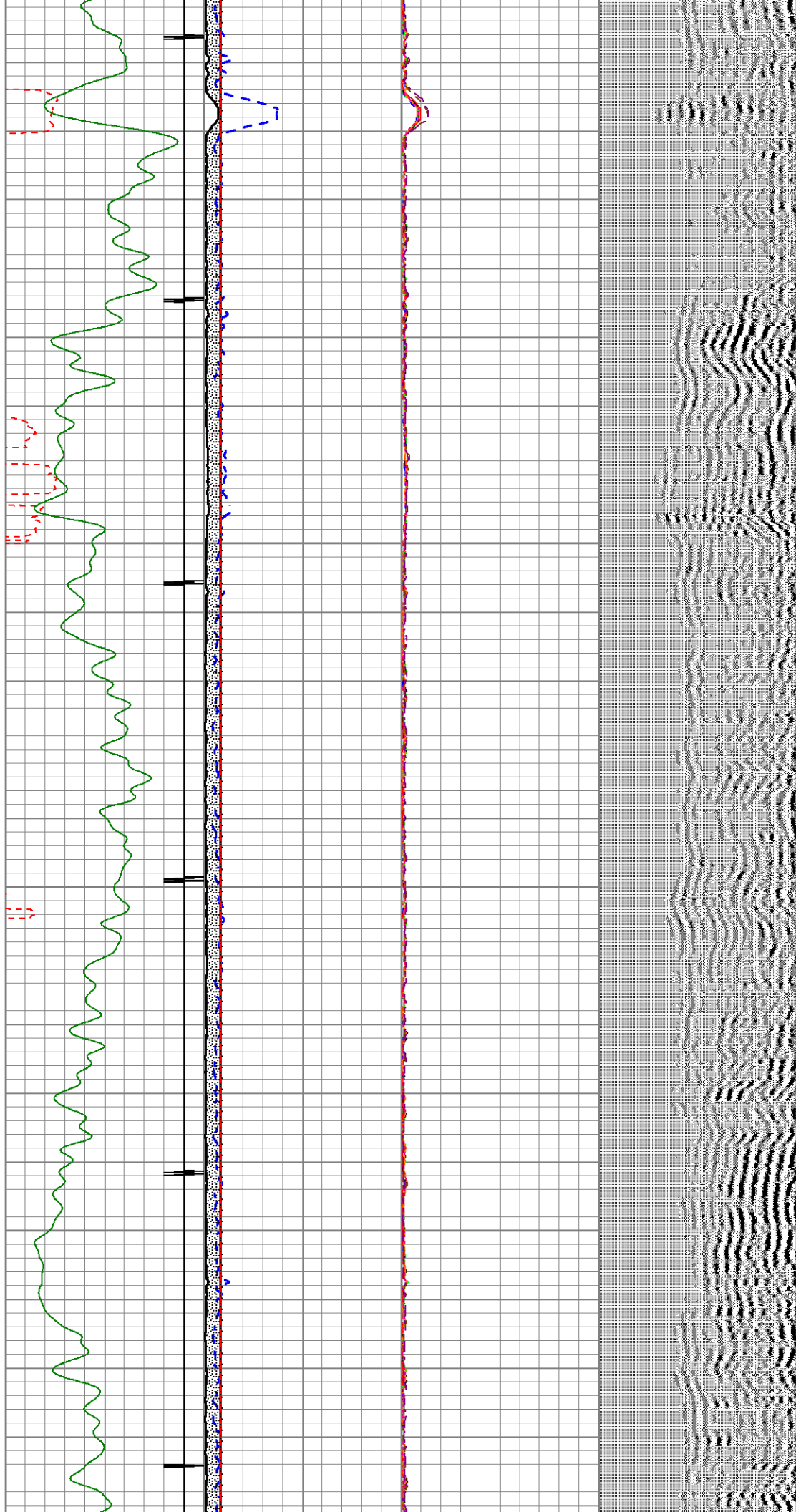
2700

2800



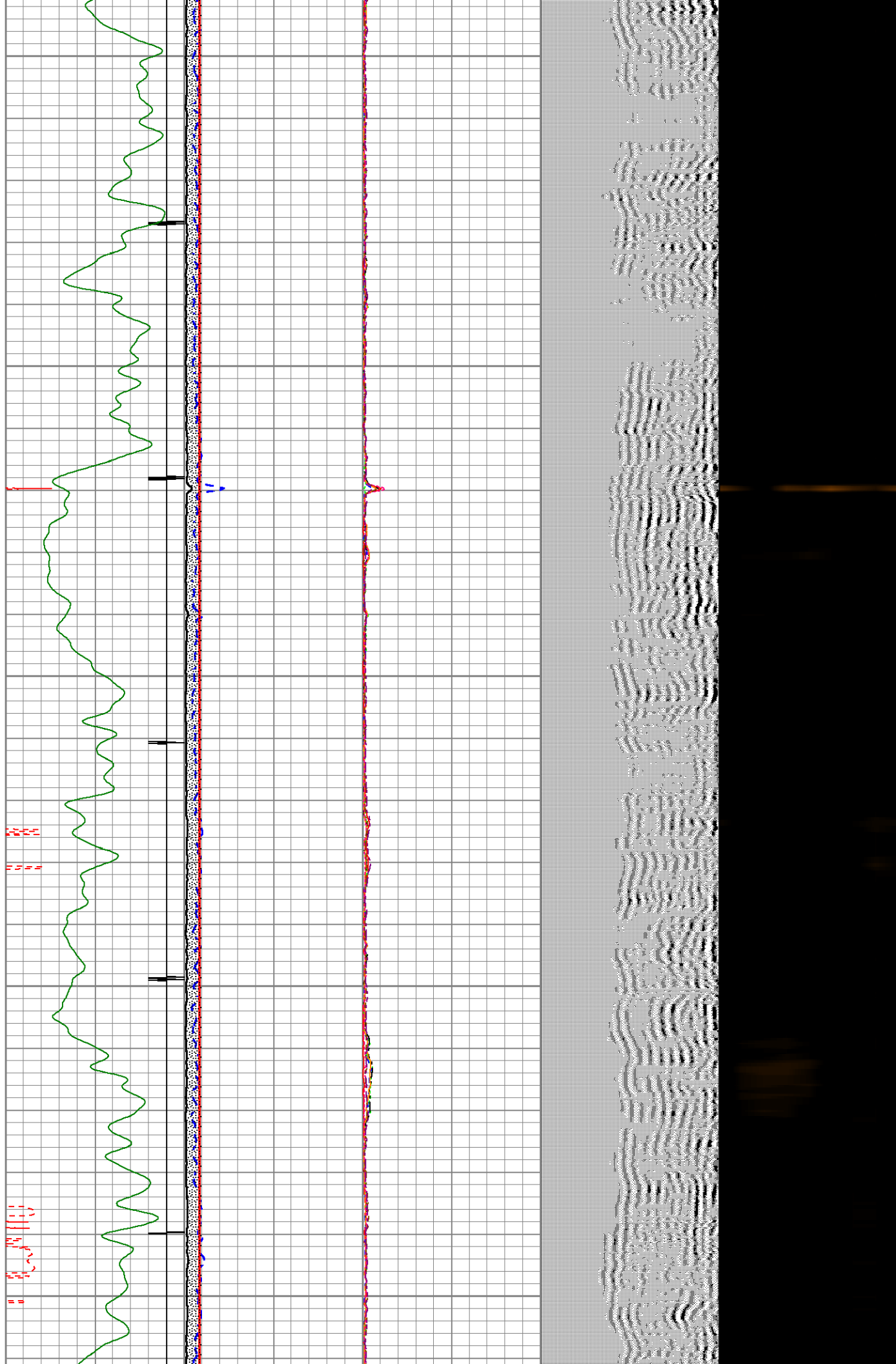
2900

3000



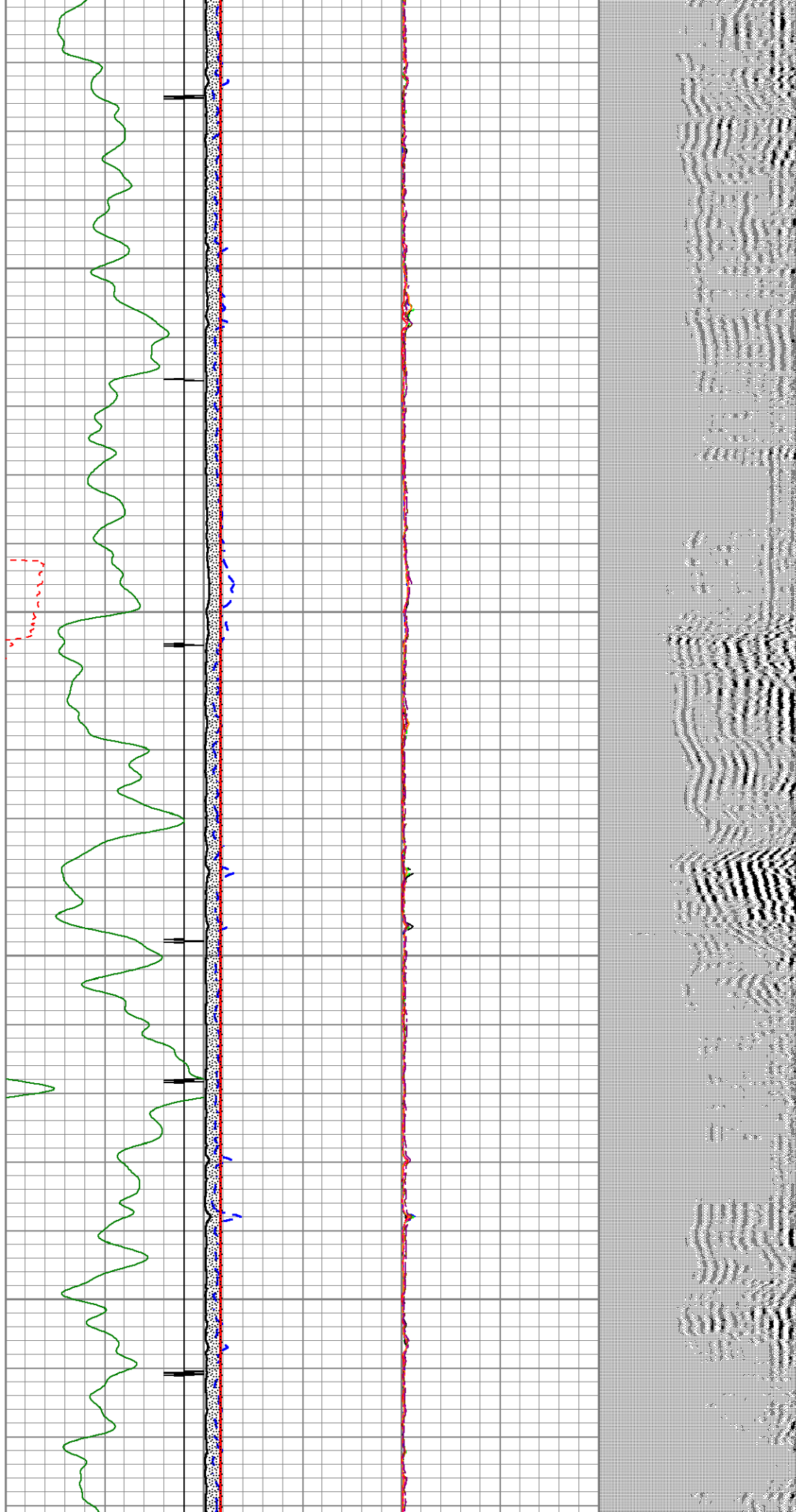
3100

3200



3300

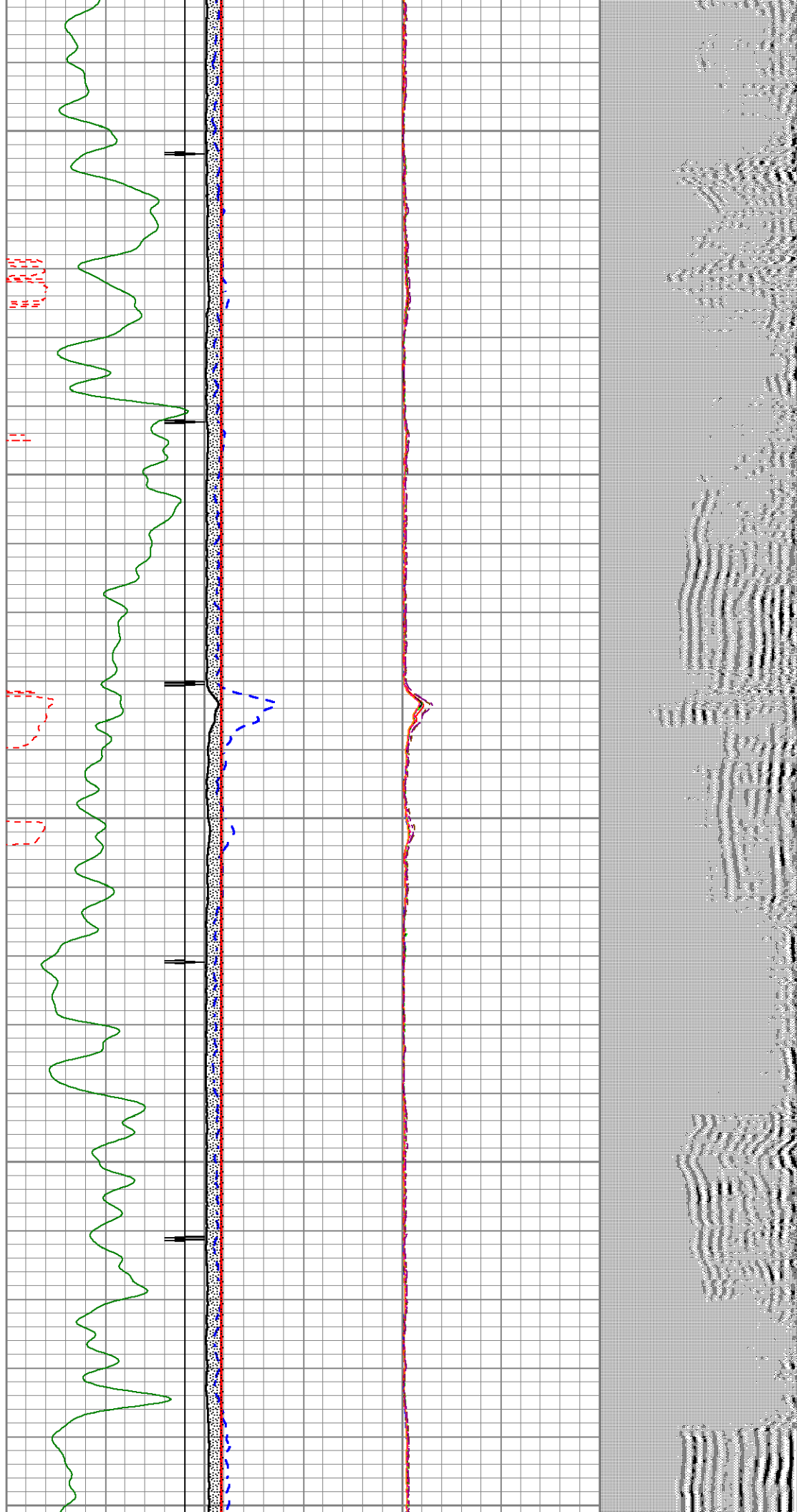
3400

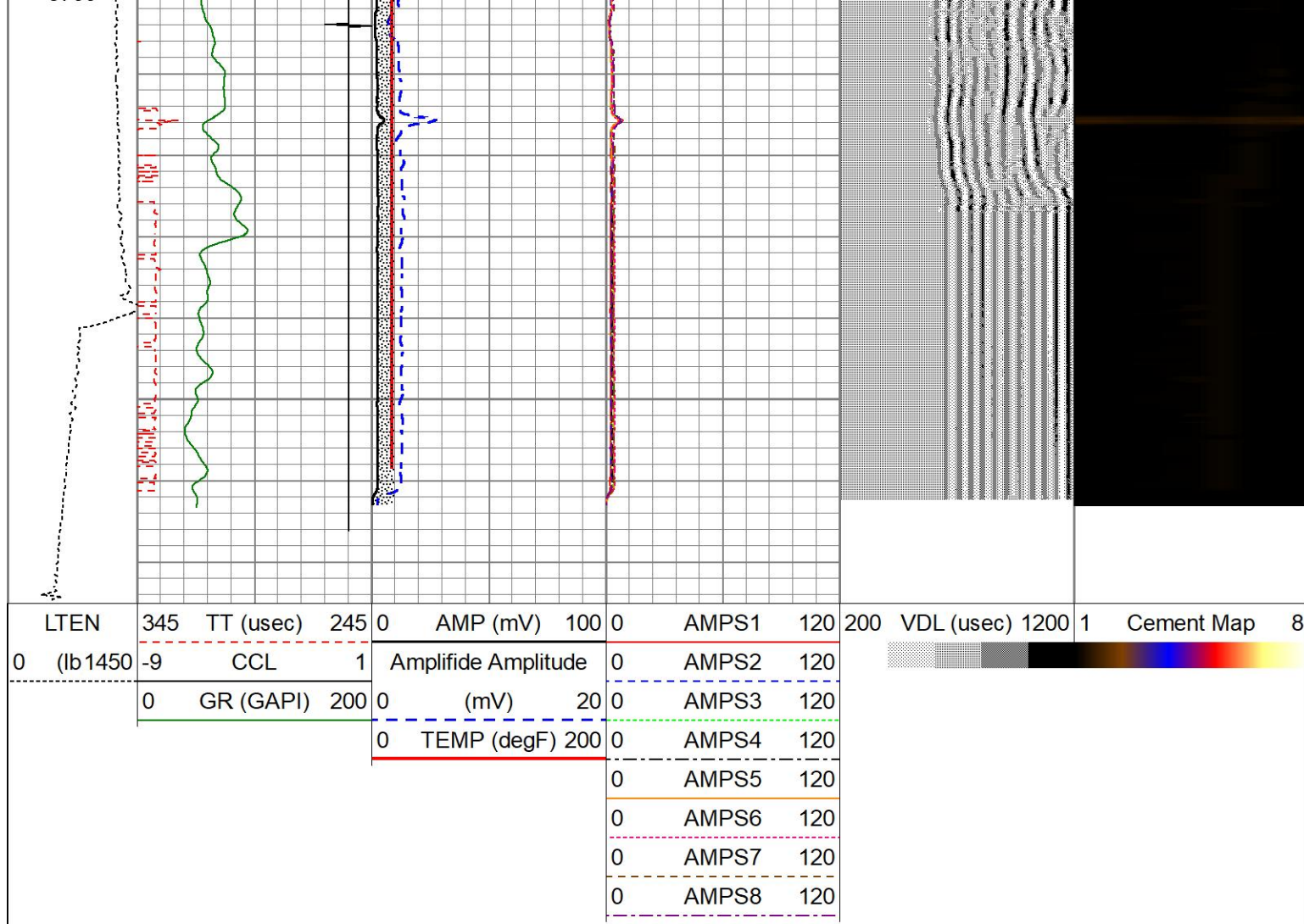


3500

3600

3700





Calibration Report				
Database File	jaques 11.db			
Dataset Pathname	pass3.3			
Dataset Creation	Tue Jul 24 10:13:10 2018			
Compensated Neutron Calibration Report				
Type / Serial:		Probe_B / 090117		
Source / Verifier:		/		
Temperature:				
SHOP CALIBRATION		Fri Jan 30 17:39:55 2009		
	Cal Tube	Units		
Tank Ratio		SS/LS		
Tank Porosity		pu		
LS Detector		cps		
SS Detector		cps		
Tool Ratio		SS/LS		
Tool Porosity		pu		
Tool Constant =				
Field Verifier	SS Detector	LS Detector	Ratio	Porosity
PRE-SURVEY VERIFICATION				
	SS Detector	LS Detector	Ratio	Porosity

POST-SURVEY VERIFICATION

SS Detector

LS Detector

Ratio

Porosity

Gamma Ray Calibration Report

Serial Number: 275
Tool Model: Probe
Performed: Tue Jul 24 08:29:13 2018

Calibrator Value: 1.0 GAPI

Background Reading: 0.0 cps
Calibrator Reading: 1.0 cps

Sensitivity: 1.0000 GAPI/cps

Segmented Cement Bond Log Calibration Report

Serial Number: allied
Tool Model: Probe275T

Calibration Casing Diameter: 5.500 in
Calibration Depth: 56.117 ft

Master Calibration, performed Tue Jul 24 09:53:32 2018:

	Raw (v)		Calibrated (mv)		Results	
	Zero	Cal	Zero	Cal	Gain	Offset
3'	0.000	0.825	0.500	71.921	86.520	0.500
CAL	0.003	0.974				
5'	0.000	0.732	0.500	71.921	97.634	0.500
SUM						
S1	0.000	0.827	0.000	100.000	120.887	-0.000
S2	0.000	0.838	0.000	100.000	119.339	-0.000
S3	-0.003	0.822	0.000	100.000	121.312	0.336
S4	-0.000	0.811	0.000	100.000	123.263	0.010
S5	-0.001	0.805	0.000	100.000	124.206	0.073
S6	-0.002	0.823	0.000	100.000	121.276	0.232
S7	0.000	0.807	0.000	100.000	123.964	-0.000
S8	0.000	0.850	0.000	100.000	117.700	-0.000

Internal Reference Calibration, performed Tue Jun 19 13:25:20 2012:

	Raw (v)		Calibrated (v)		Results	
	Zero	Cal	Zero	Cal	Gain	Offset
CAL	0.000	0.000	0.003	0.974	1.000	0.000

Air Zero Calibration, performed Thu Oct 19 09:04:41 2017:

	Raw (v)		Calibrated (v)		Results	
	Zero		Zero		Offset	
3'	0.000		0.000		0.000	
5'	0.000		0.000		0.000	
SUM						
S1	0.000		0.000		0.000	
S2	0.000		0.000		0.000	
S3	0.000		0.000		0.000	
S4	0.000		0.000		0.000	

S4	0.000	0.000	0.000
S5	0.000	0.000	0.000
S6	0.000	0.000	0.000
S7	0.000	0.000	0.000
S8	0.000	0.000	0.000