



COMPENSATED NEUTRON LOG  
GAMMA RAY / CCL

Company CATAMOUNT  
Well JAQUES 11  
Field IGNACIO  
County LA PLATA State NM

Location: 2495' FNL & 1891' FEL  
API #: 05-067-10019  
Other Services  
Permanent Datum GROUND LEVEL Elevation 6728  
Log Measured From KB 11  
Drilling Measured From KELLY BUSHING  
Elevation  
K.B. 6717  
D.F. 6718  
G.L. 6728

Date 7-24-18

Run Number 1  
Depth Driller 3882  
Depth Logger 3740  
Bottom Logged Interval 3740  
Top Log Interval SURFACE  
Open Hole Size N/A  
Type Fluid WATER  
Density / Viscosity 8.4  
Max. Recorded Temp. N/A  
Estimated Cement Top SEE LOG  
Time Well Ready 8:00AM  
Time Logger on Bottom 10:15 AM  
Equipment Number 110  
Location FARMINGTON  
Recorded By SWEAT  
Witnessed By MARK WOLFE

Borehole Record				Tubing Record			
Run Number	Bit	From	To	Size	Weight	From	To

Casing Record	Size	Wgt/Ft	Top	Bottom
Surface String				
Prot. String				
Production String				
Liner				

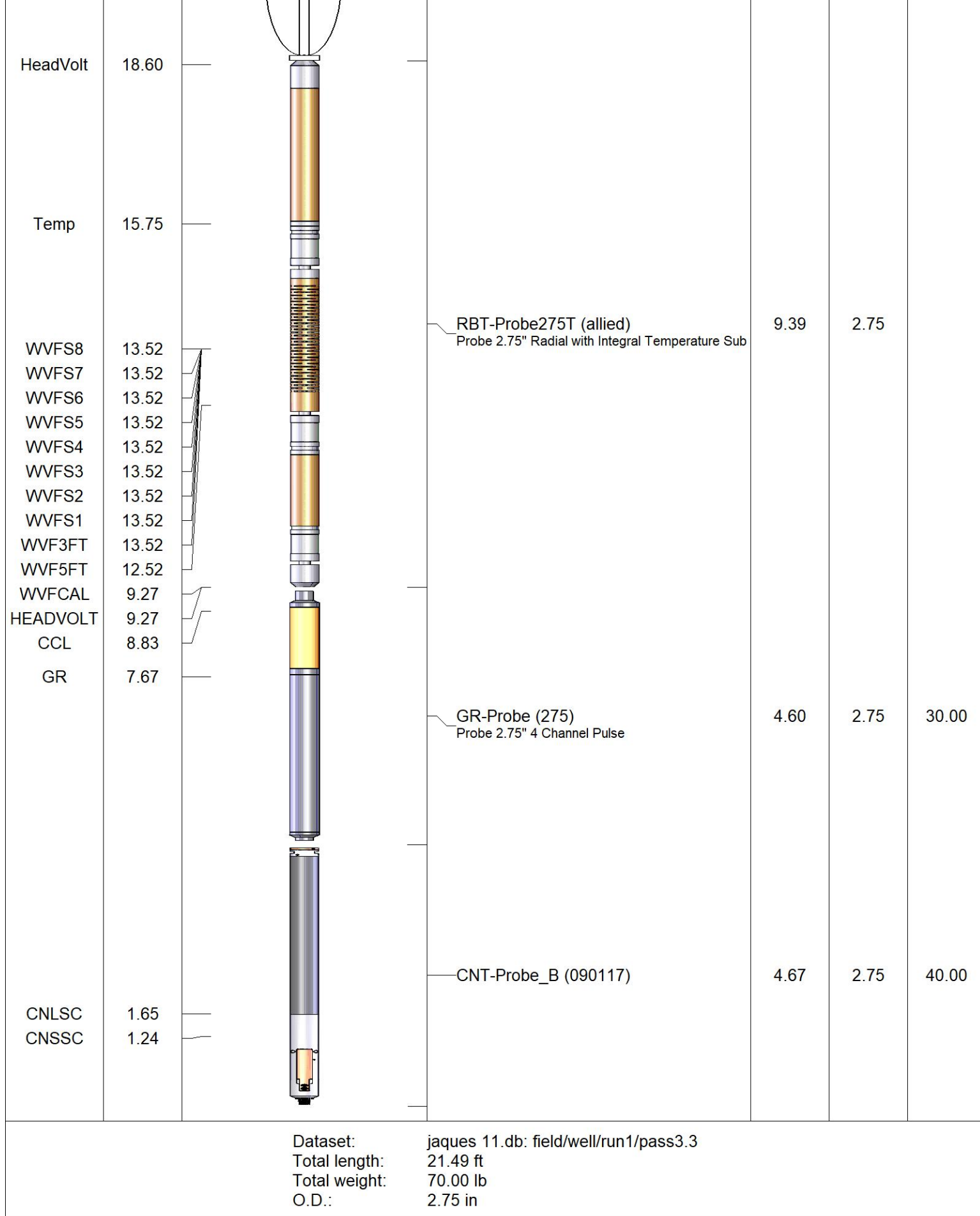
<<< Fold Here >>>

All interpretations are opinions based on inferences from electrical or other measurements and we cannot and do not guarantee the accuracy or correctness of any interpretation, and we shall not, except in the case of gross or willful negligence on our part, be liable or responsible for any loss, costs, damages, or expenses incurred or sustained by anyone resulting from any interpretation made by any of our officers, agents or employees. These interpretations are also subject to our general terms and conditions set out in our current Price Schedule.

Comments

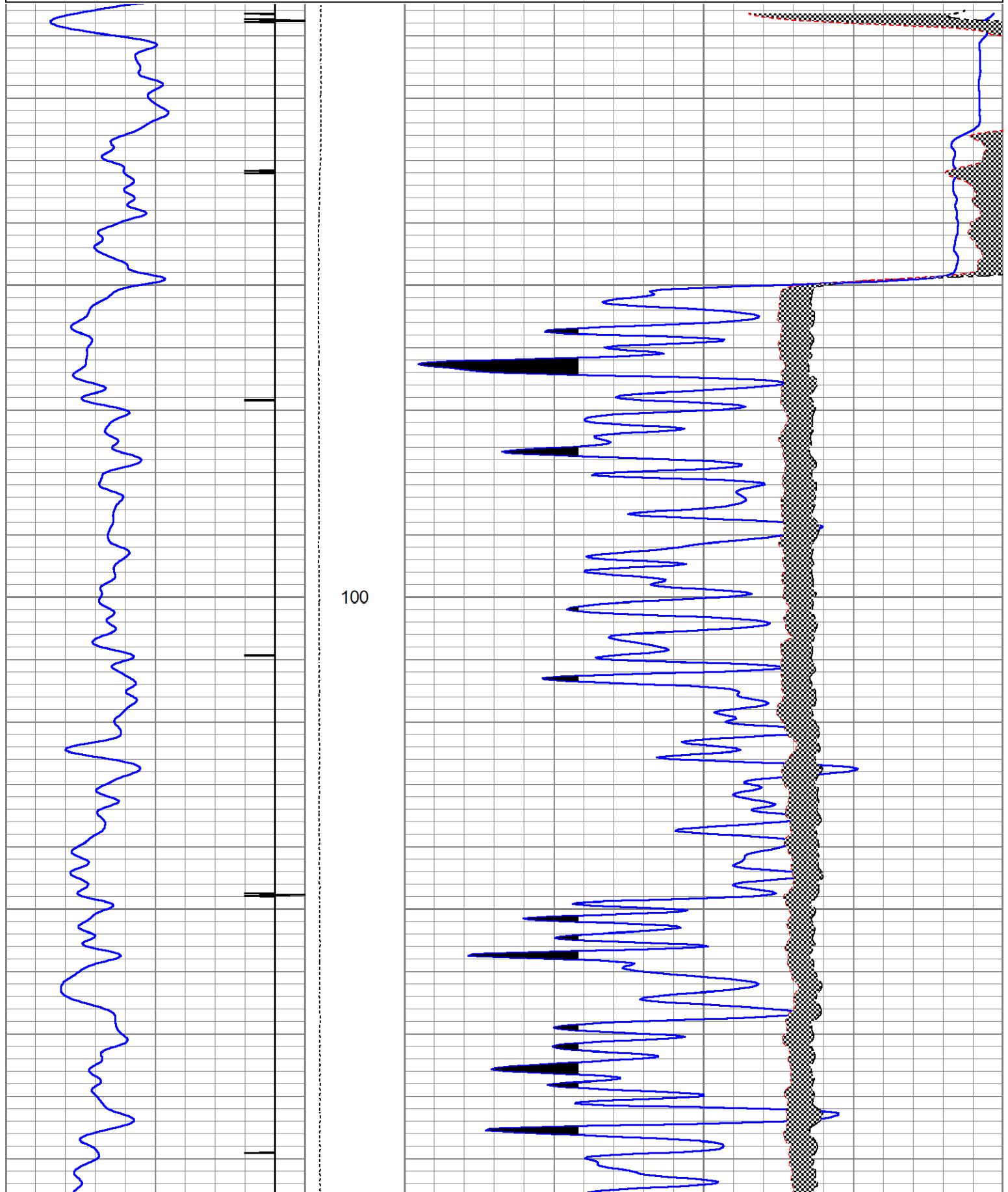
THANK YOU FOR USING BASIN WELL LOGGING

Sensor	Offset (ft)	Schematic	Description	Length (ft)	O.D. (in)	Weight (lb)
			CENT-PTS275	2.83	2.75	



Database File jaques 11.db  
 Dataset Pathname pass3.3  
 Presentation Format cntfruit  
 Dataset Creation Tue Jul 24 10:13:10 2018  
 Charted by Depth in Feet scaled 1:240

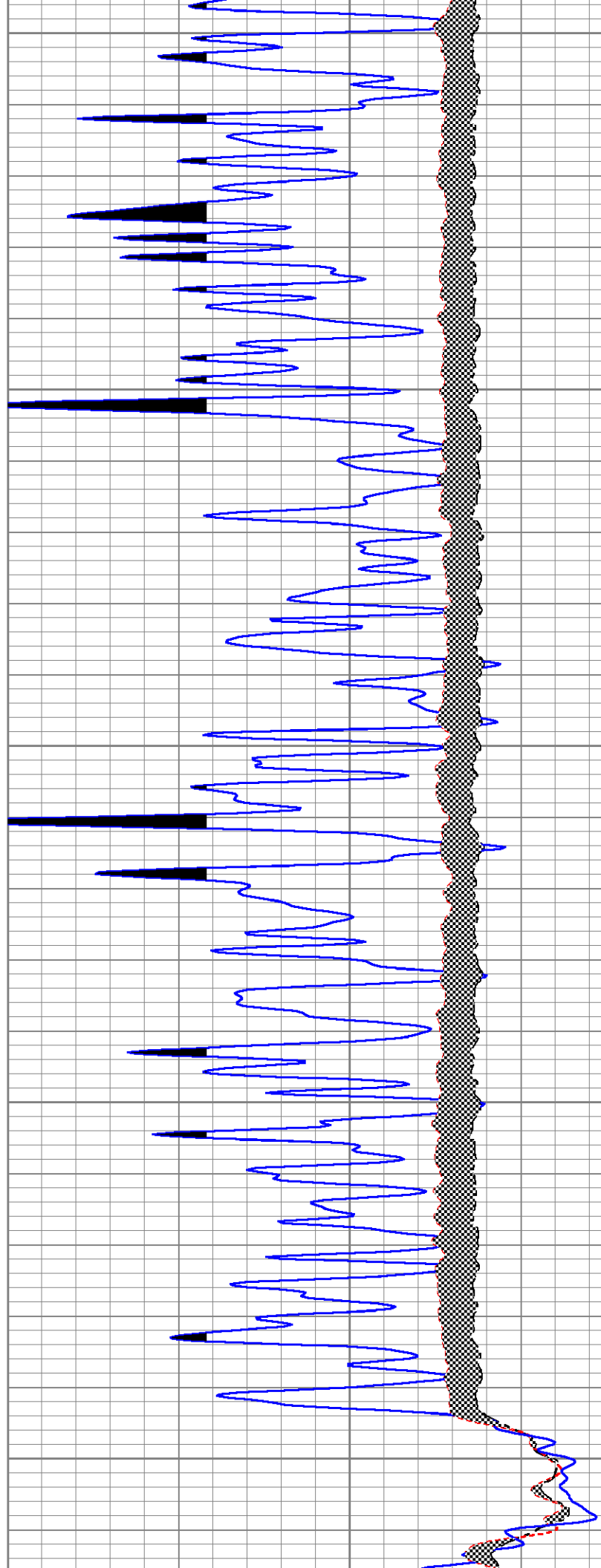
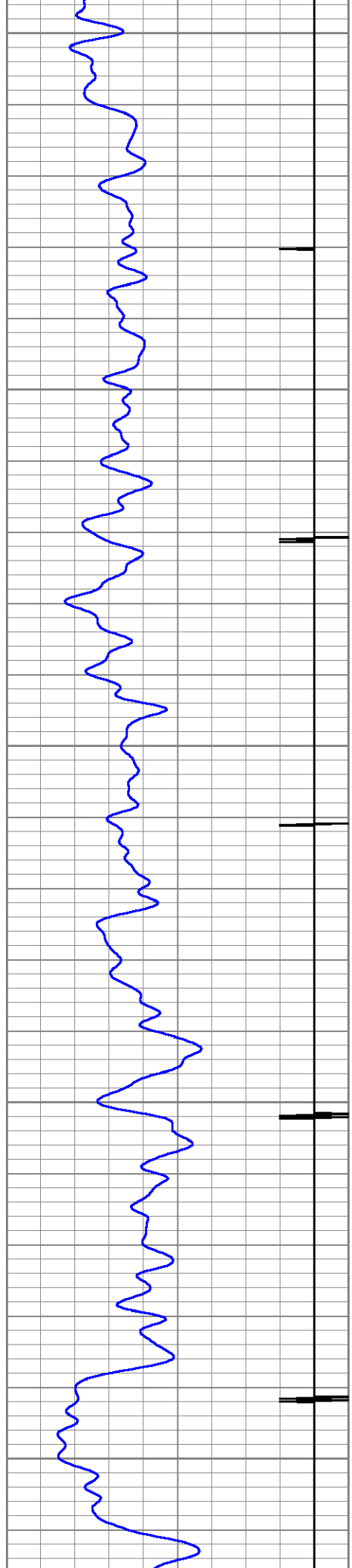
0	GR (GAPI)	200	LTEN	60	NEUTRON POROSITY (pu)	0
-9	CCL	1	0	(lb/2000)	NEURTON LONG SPACE	
					-480 (cps)	1100
					NEURTON SHORT SPACE	
					-275 (cps)	3700

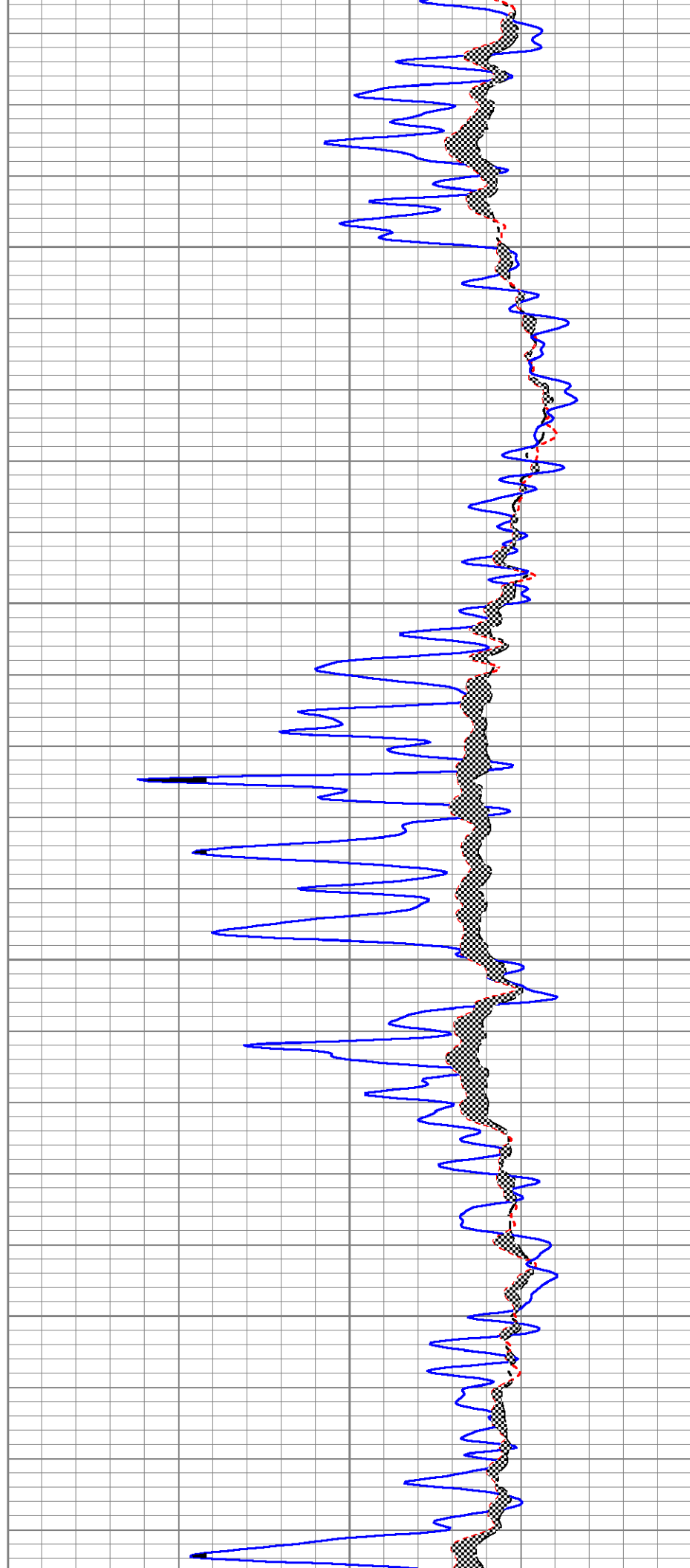
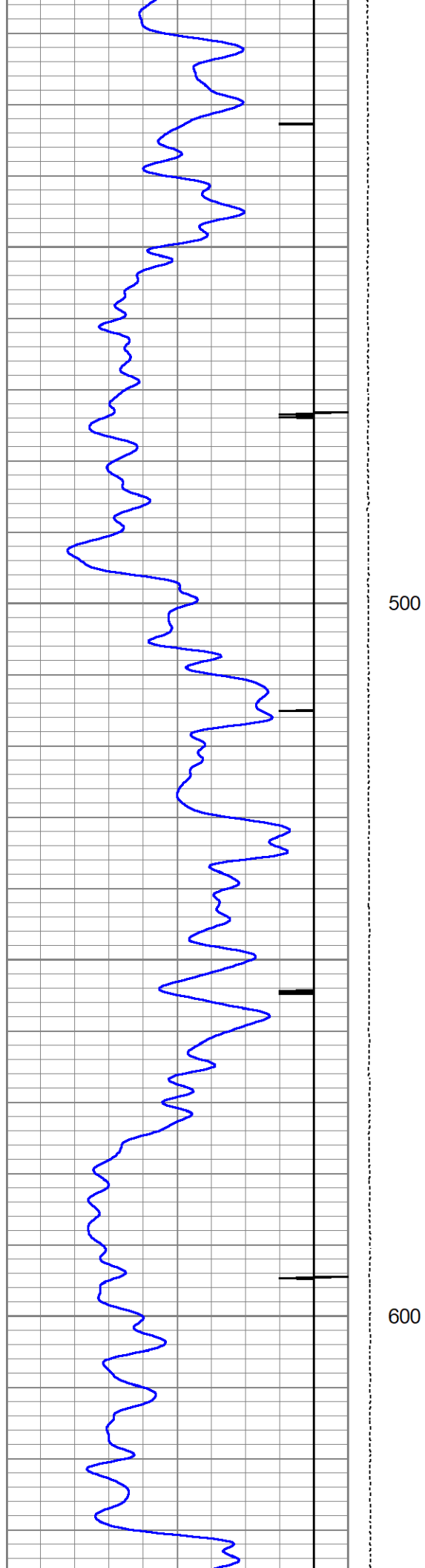


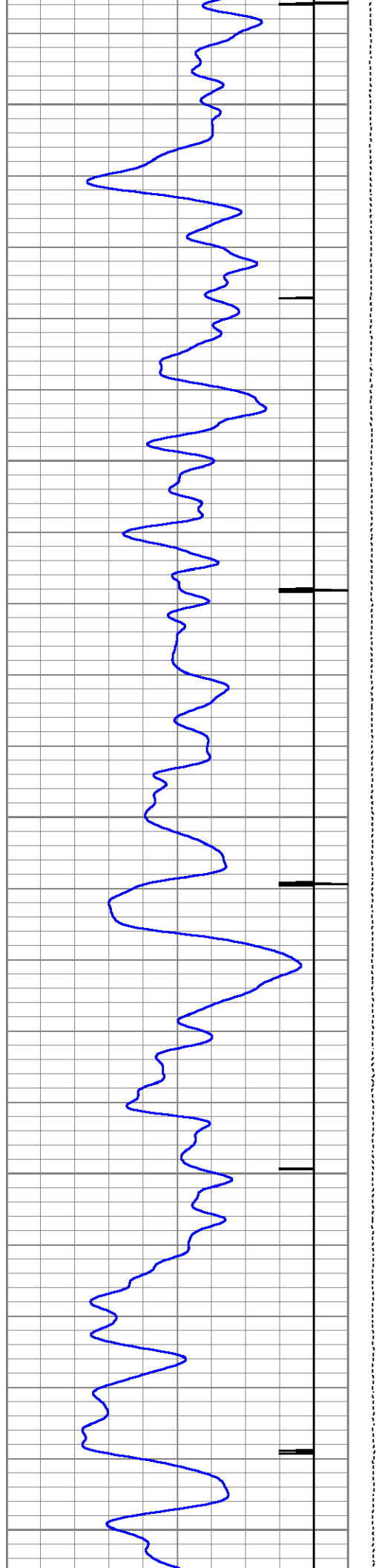
200

300

400

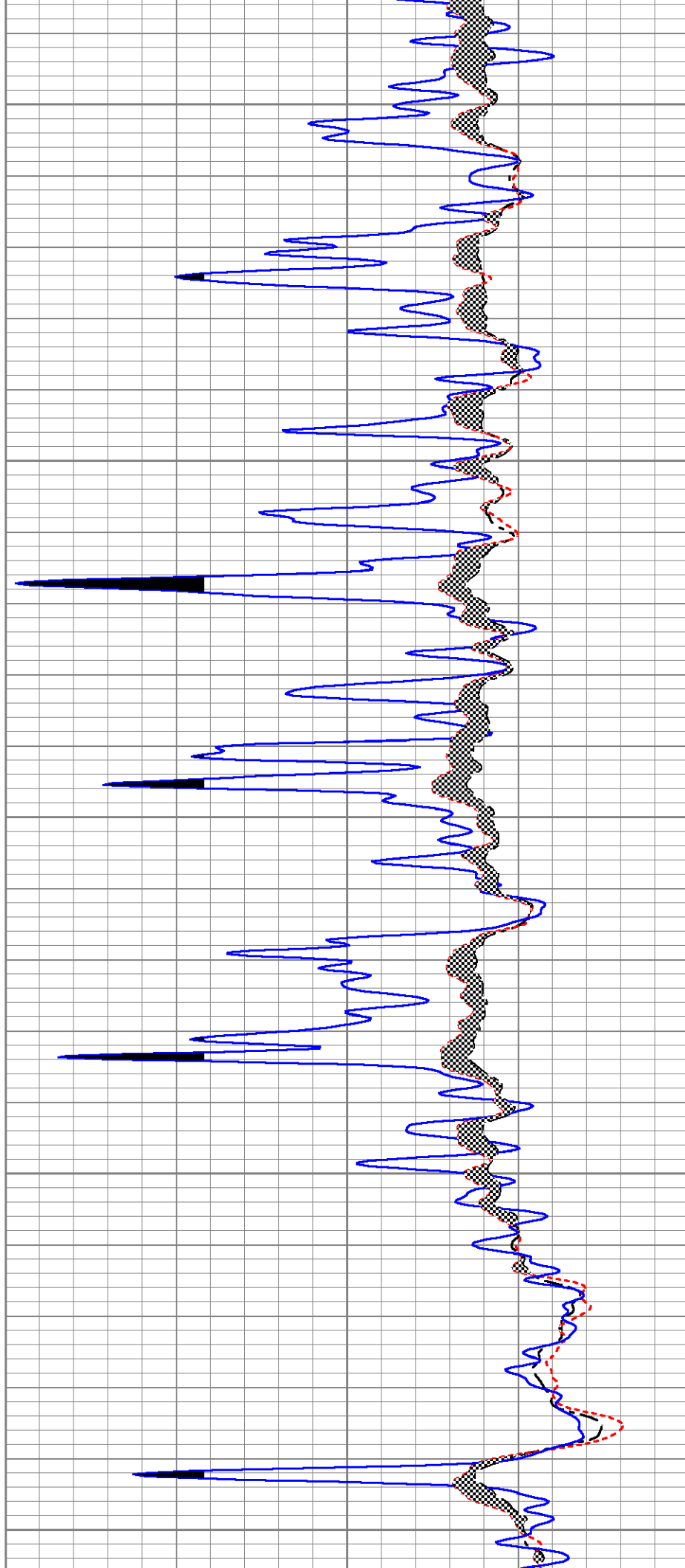


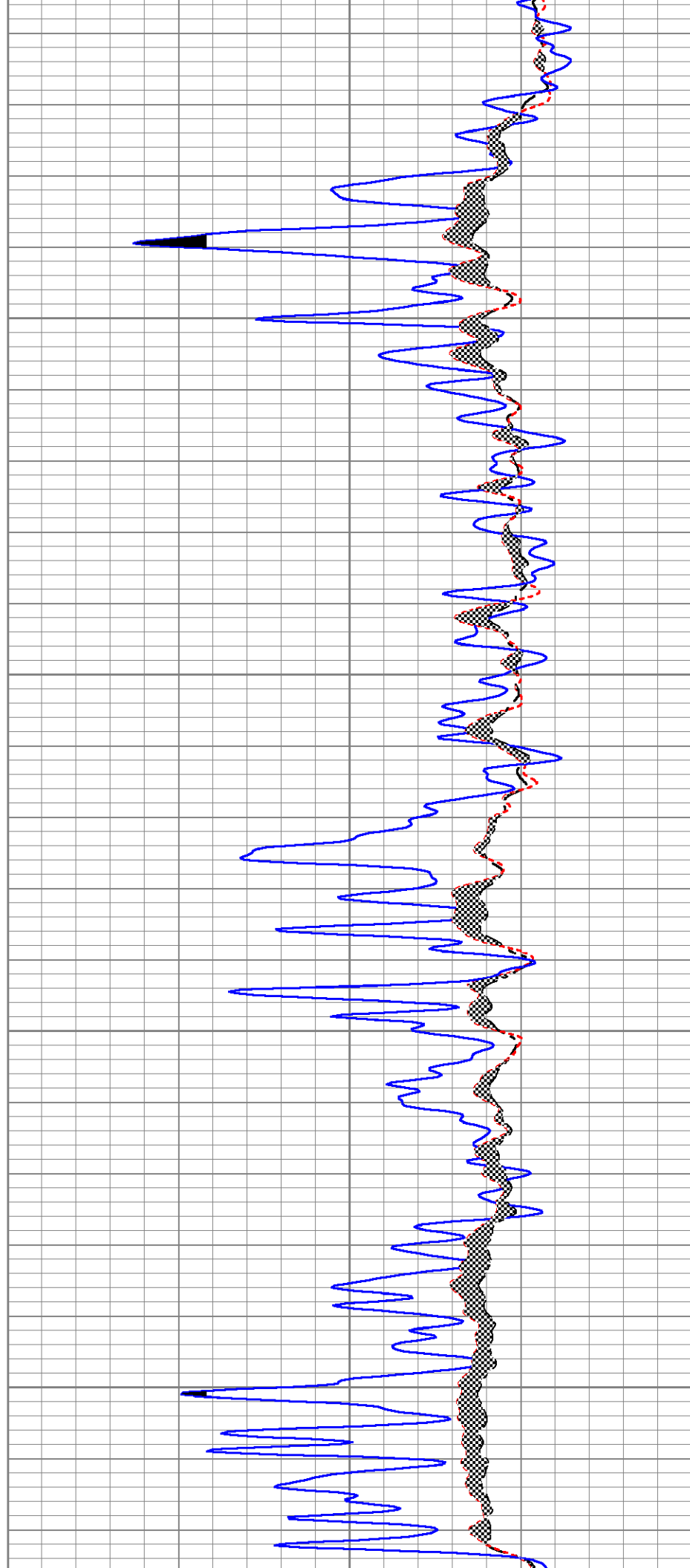
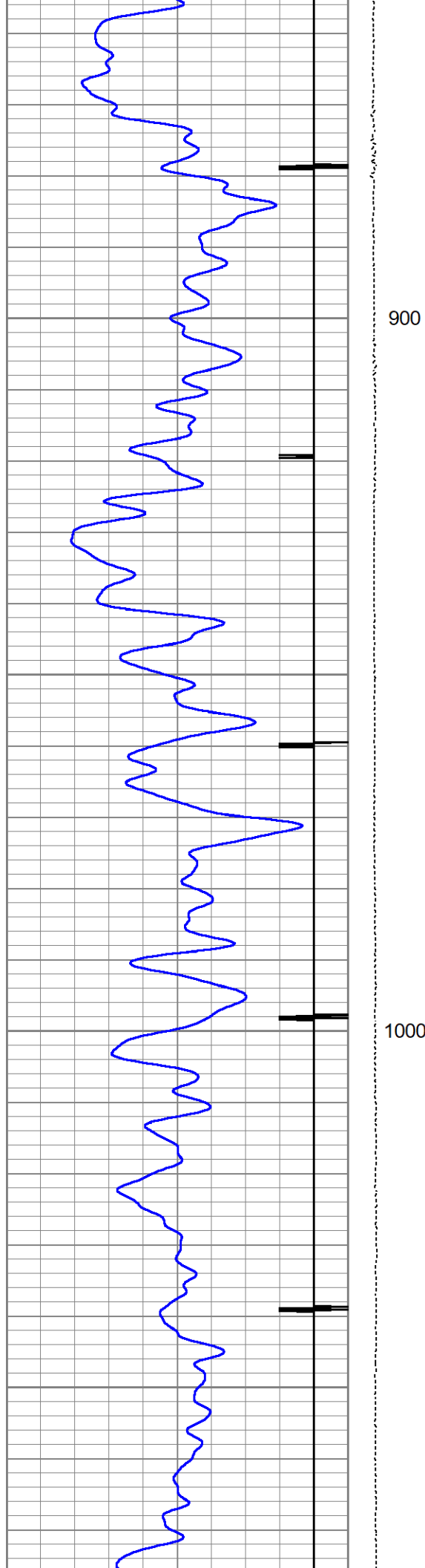


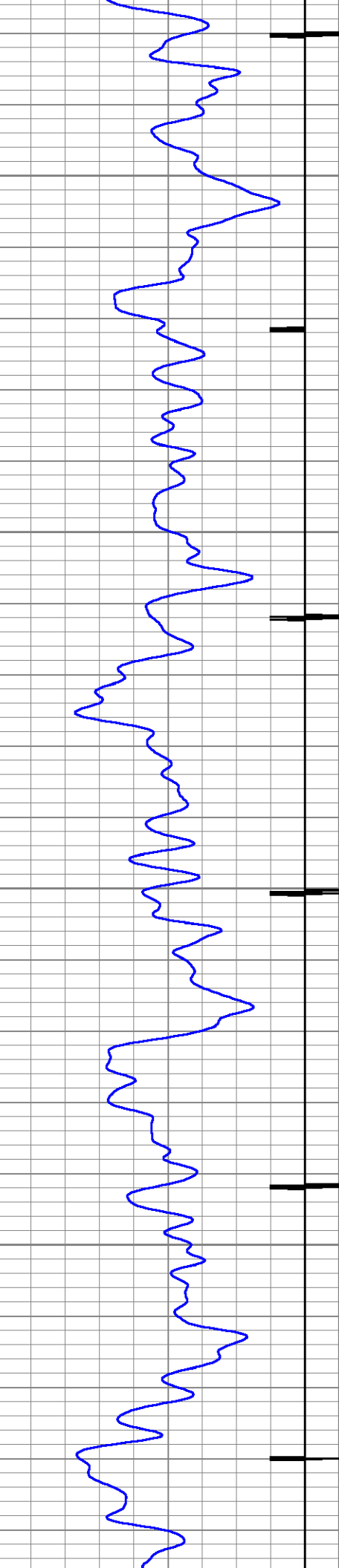


700

800

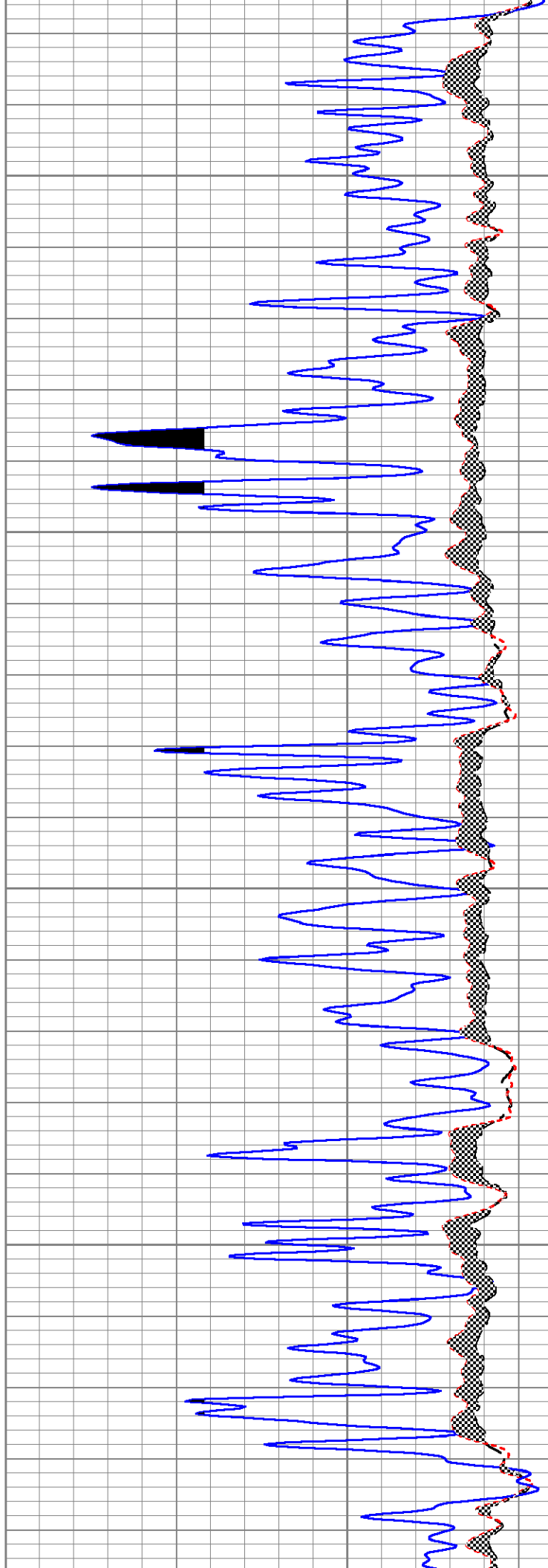




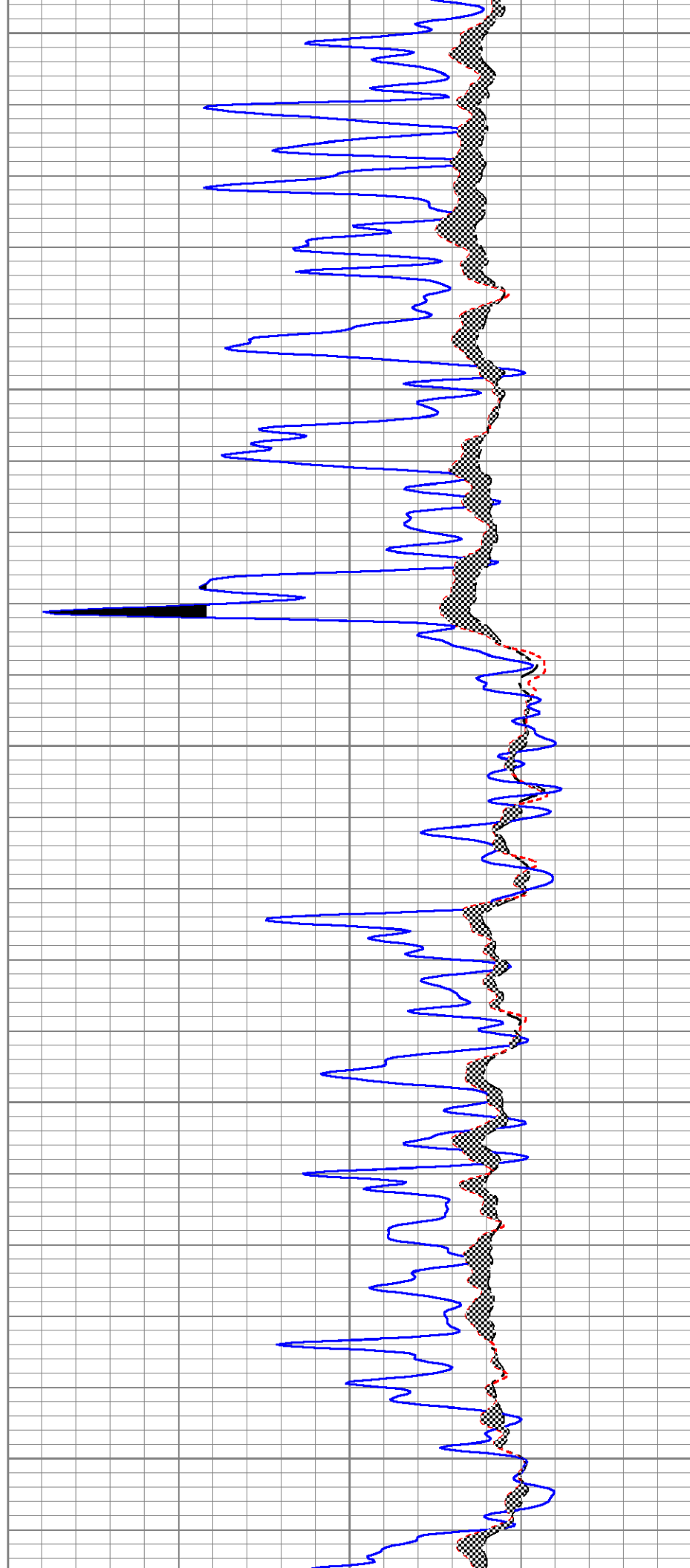
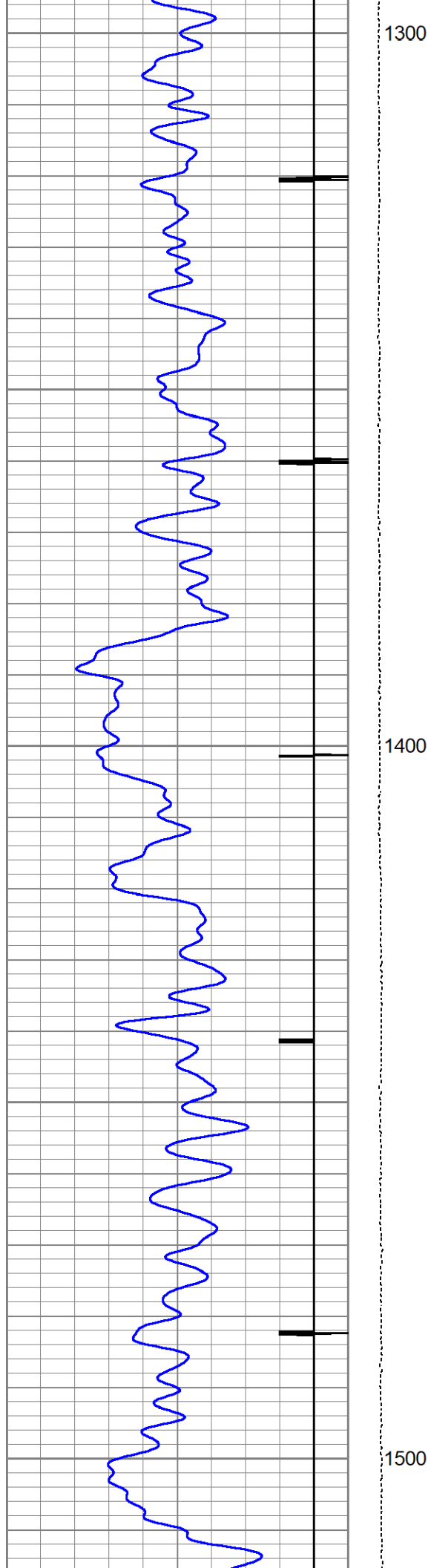


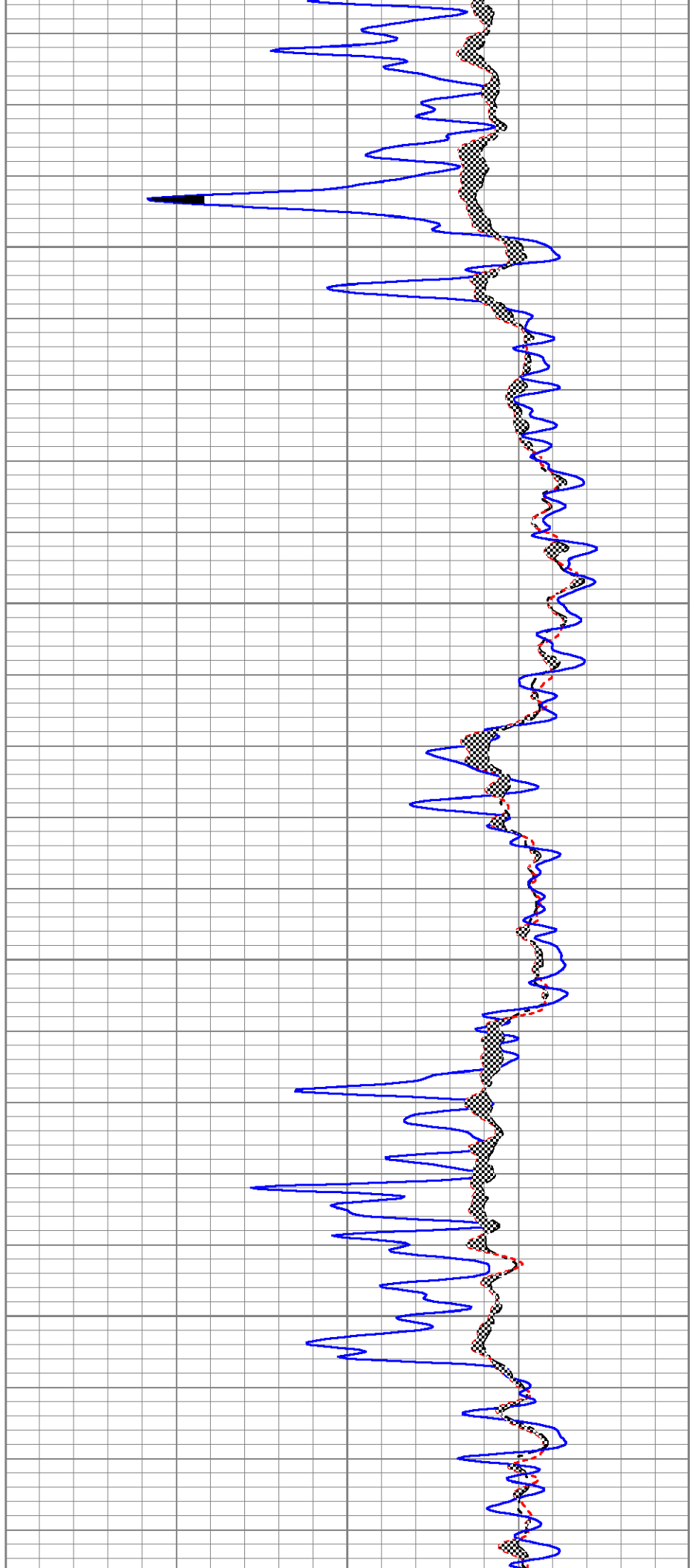
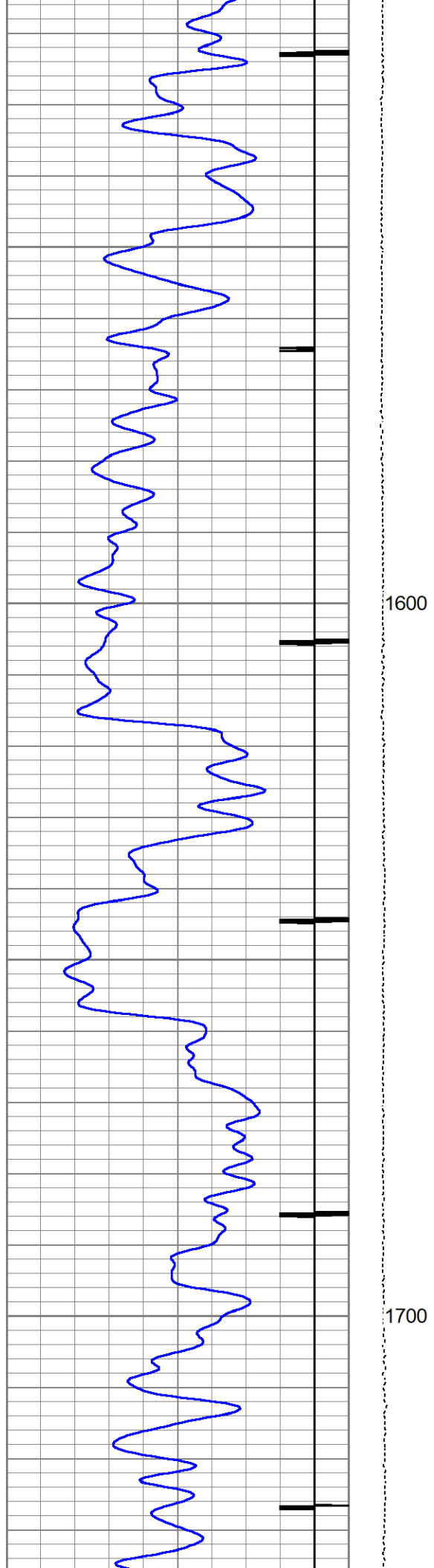
1100

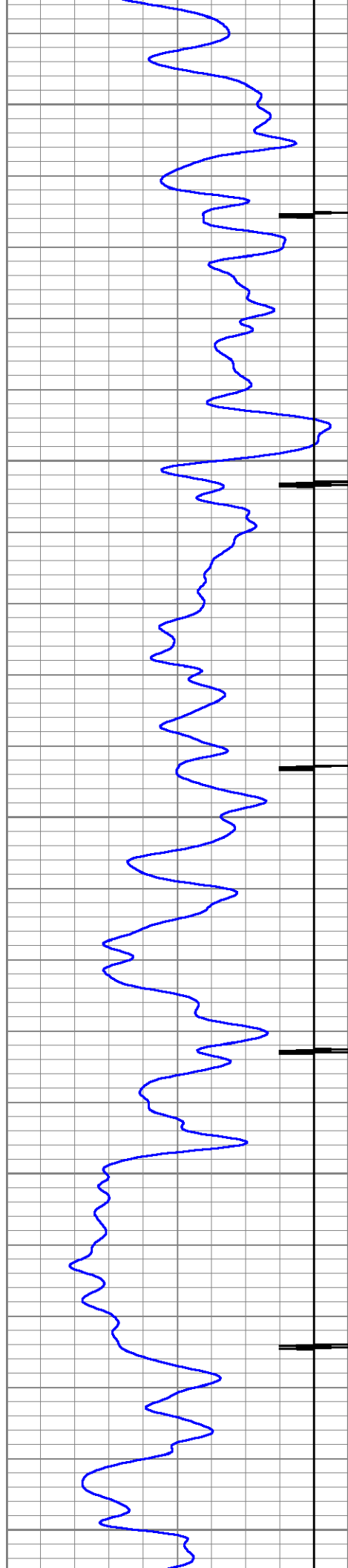
1200





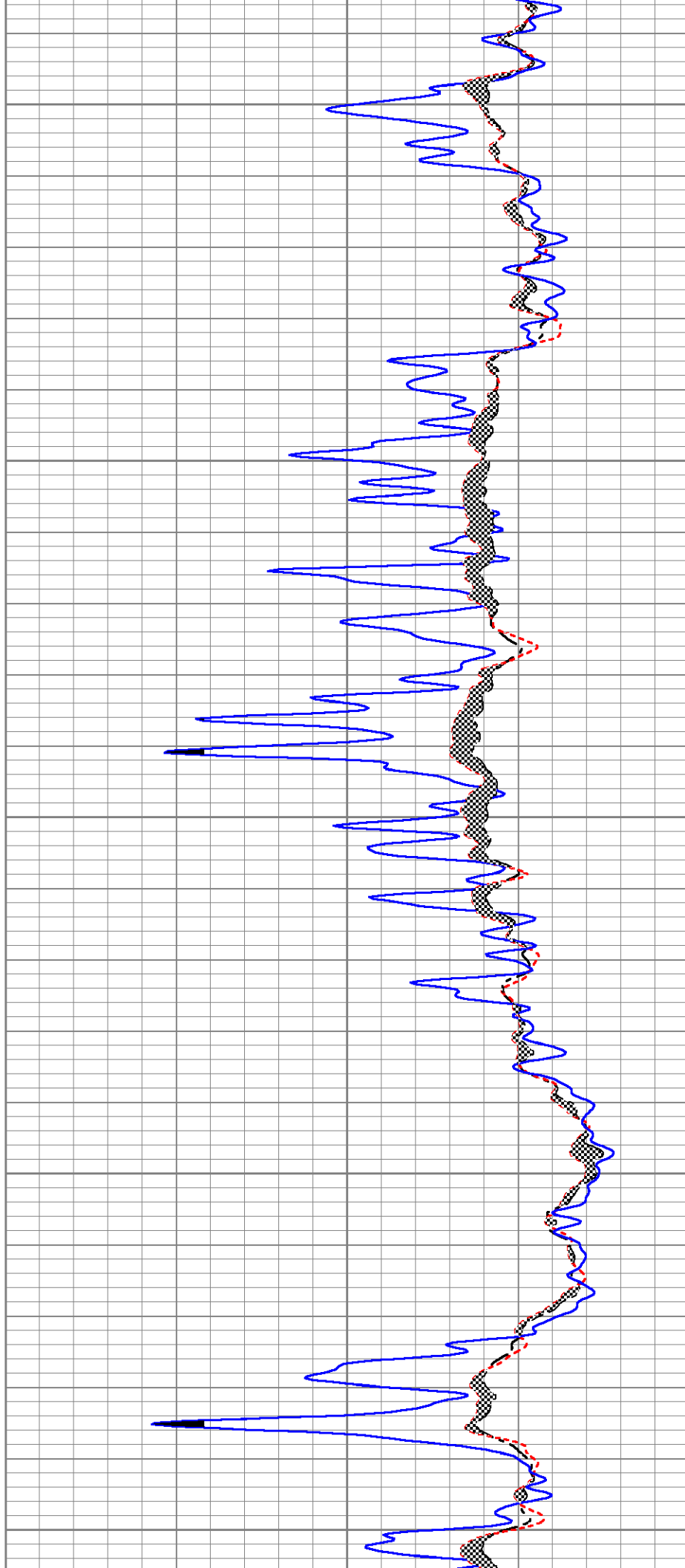


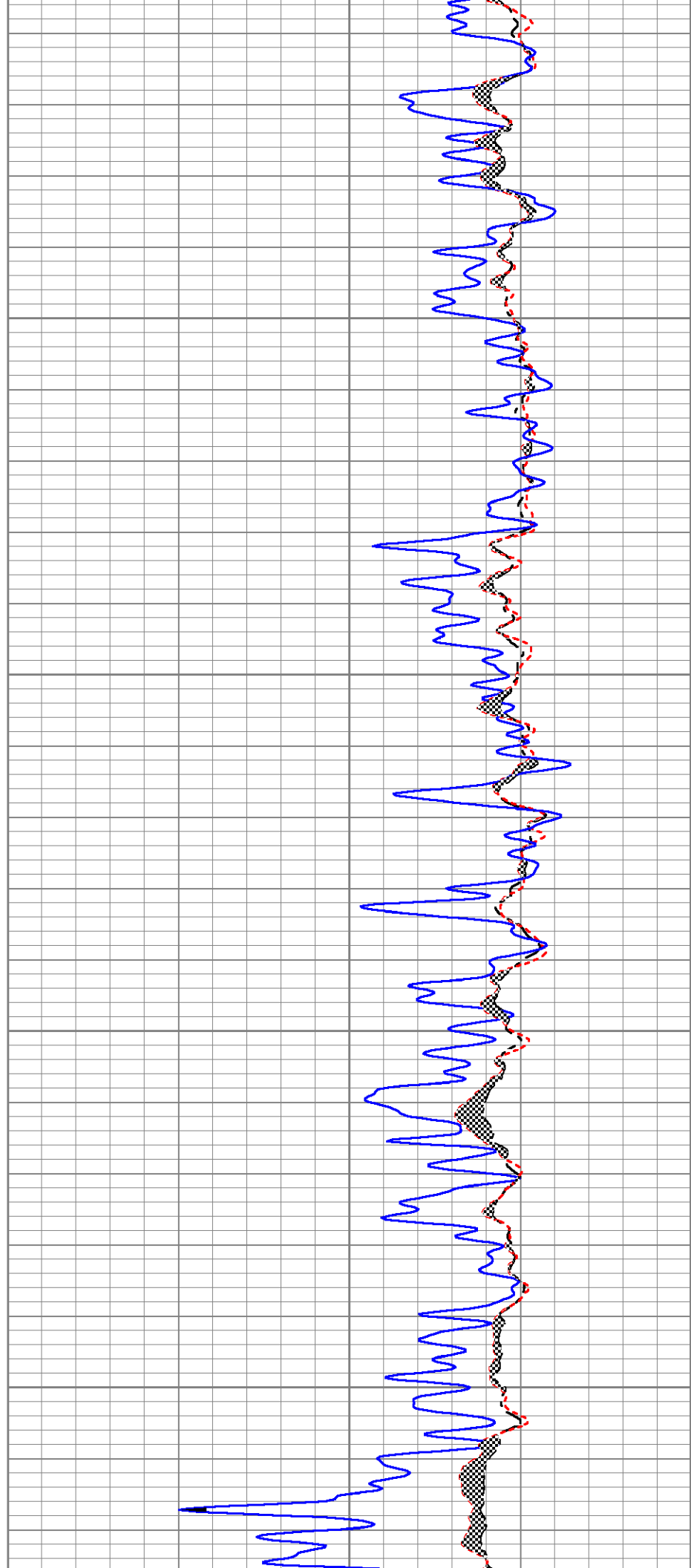
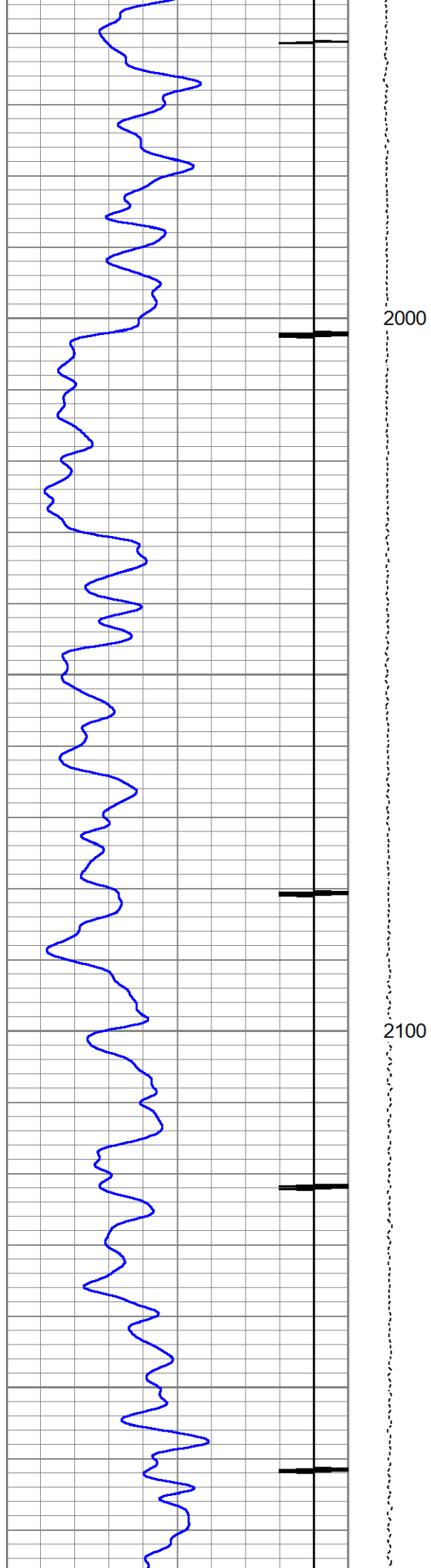


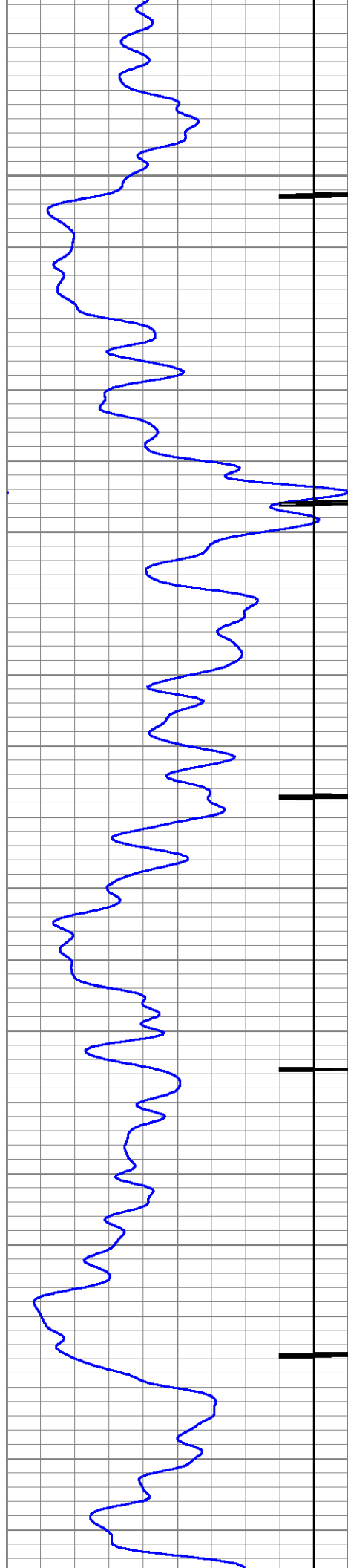


1800

1900

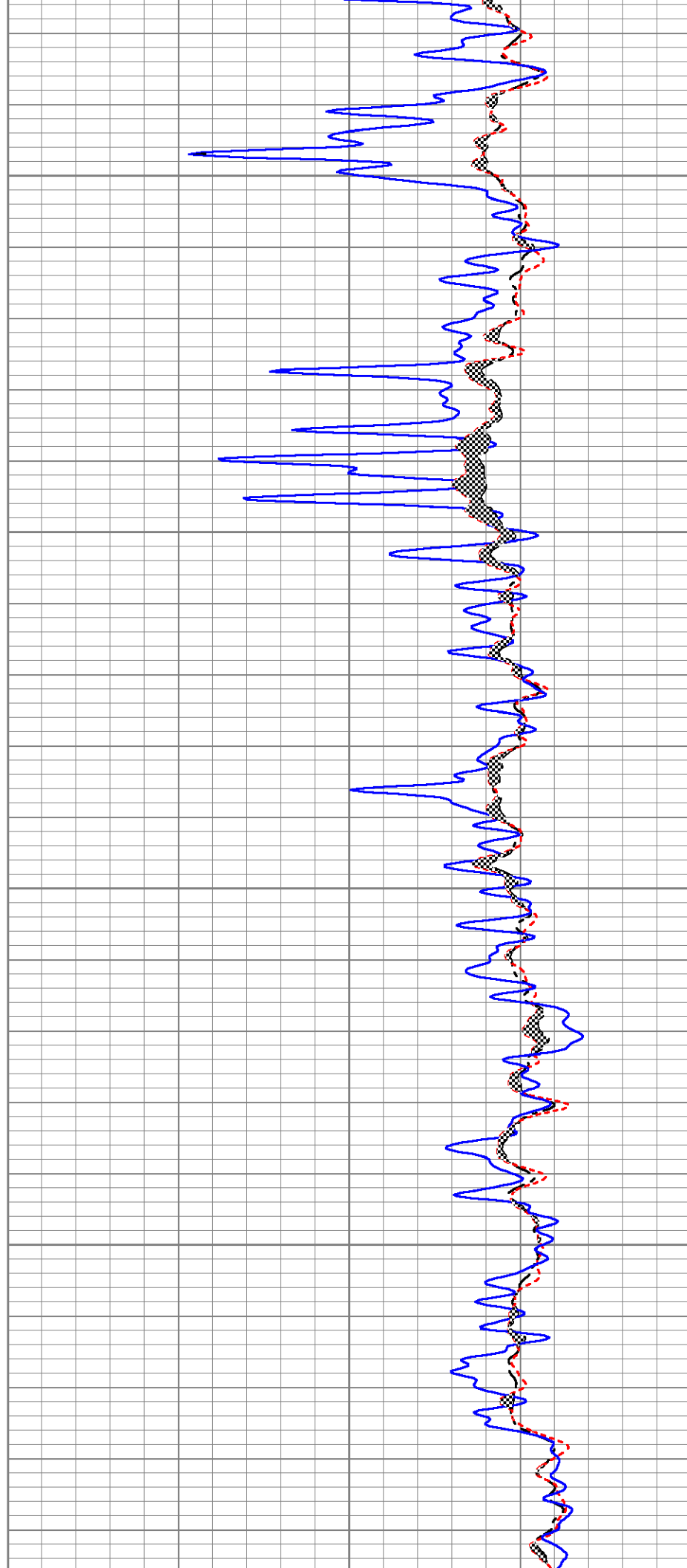


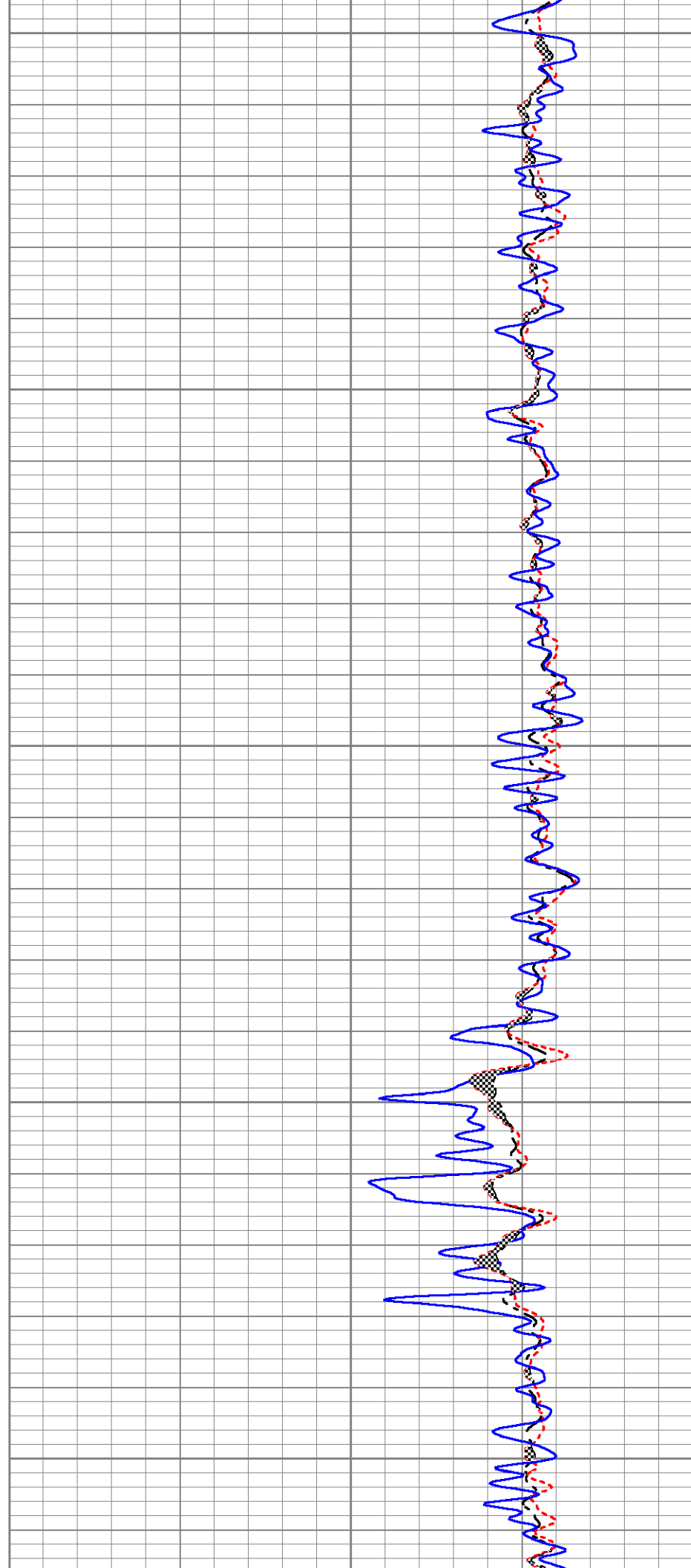
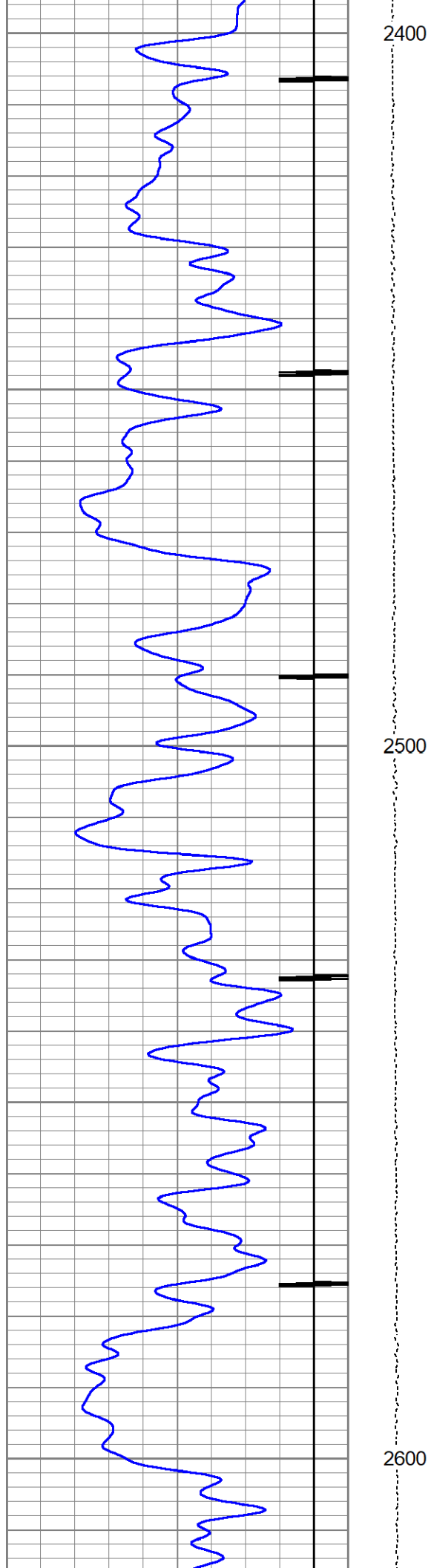


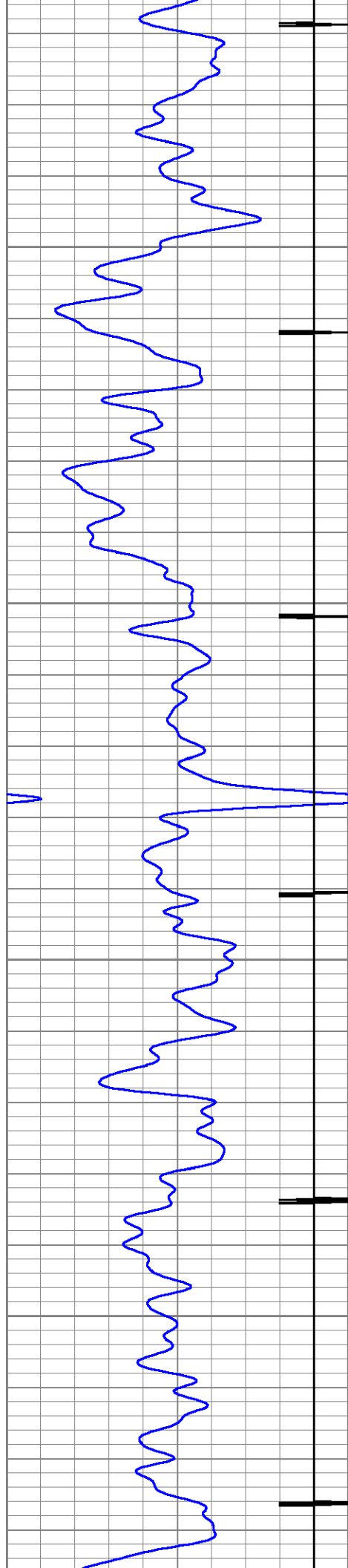


2200

2300

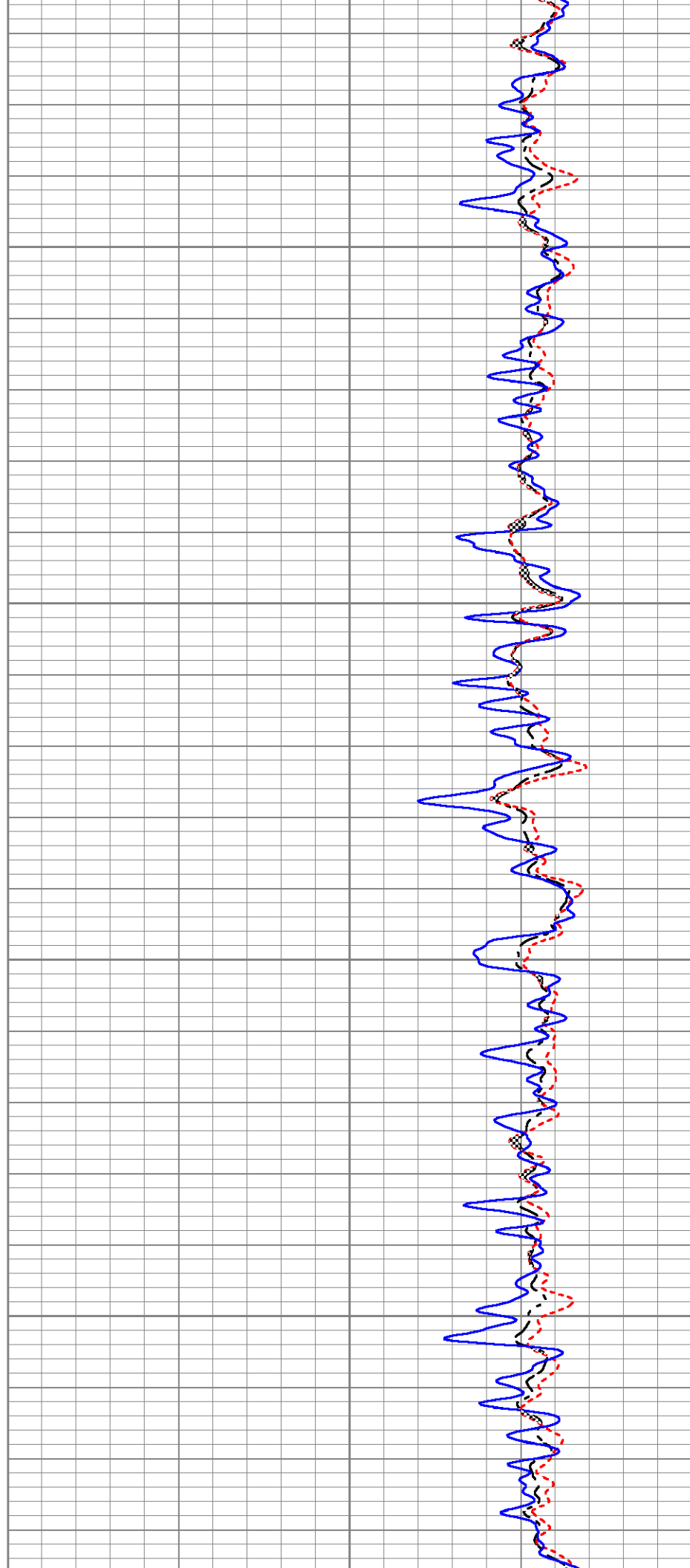


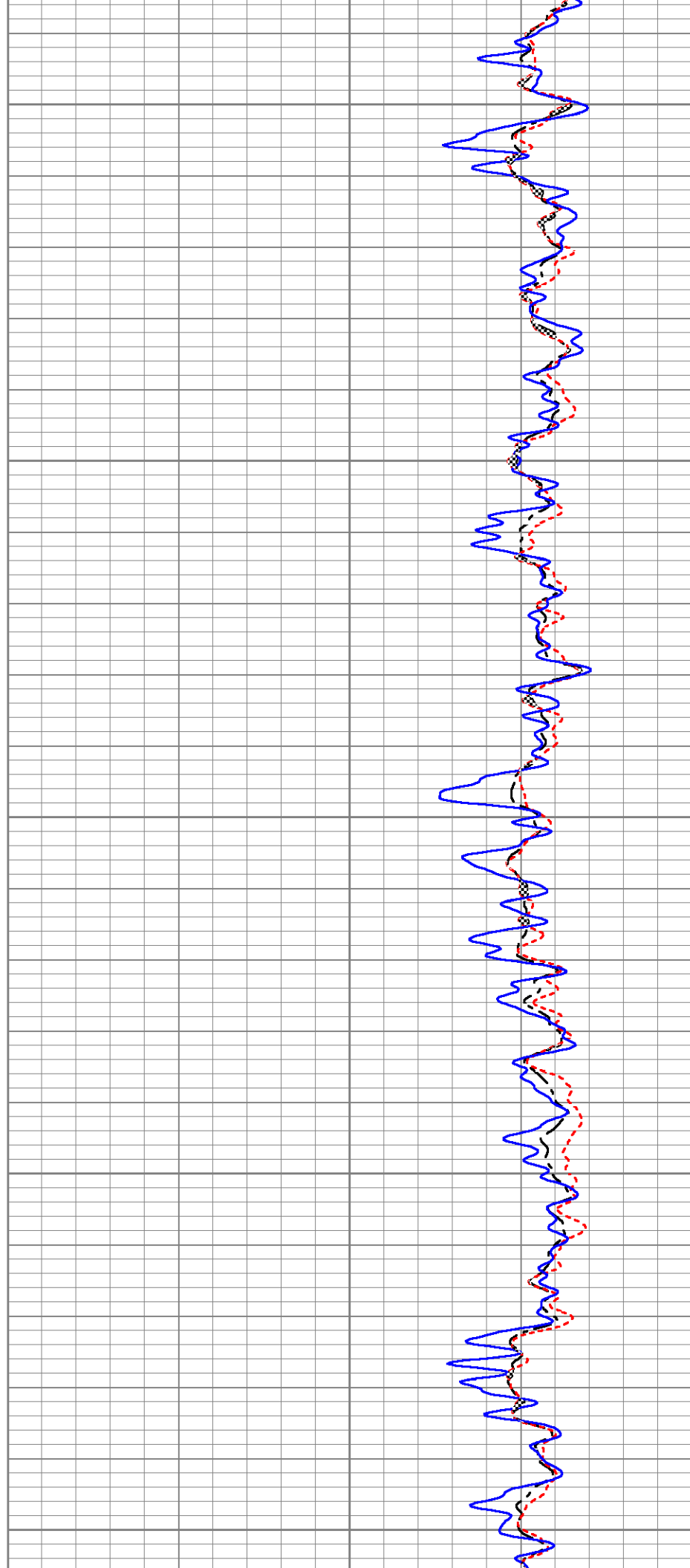
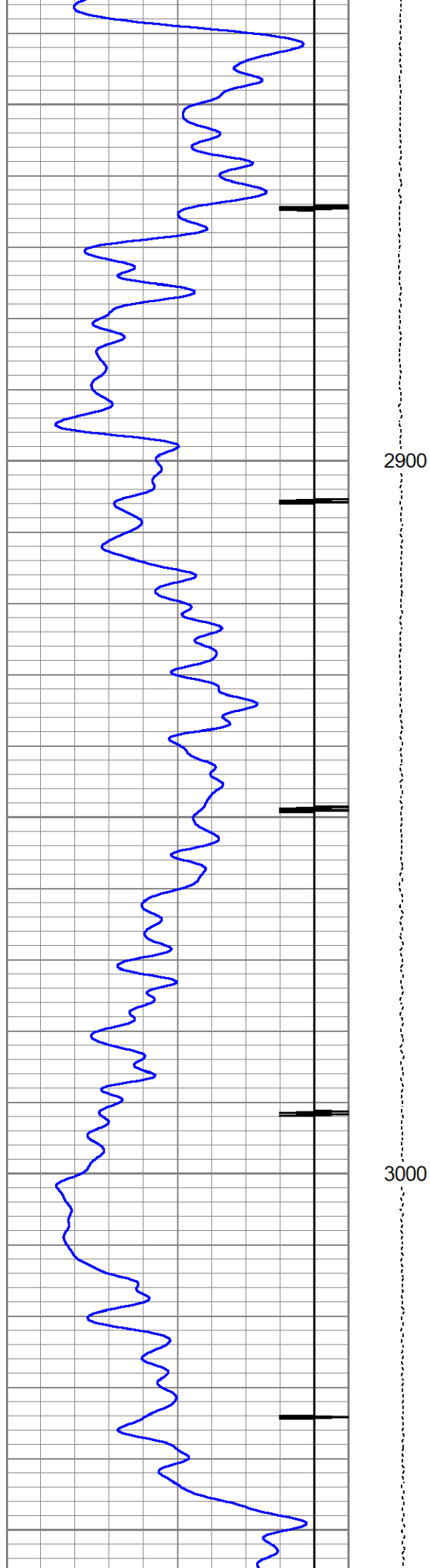




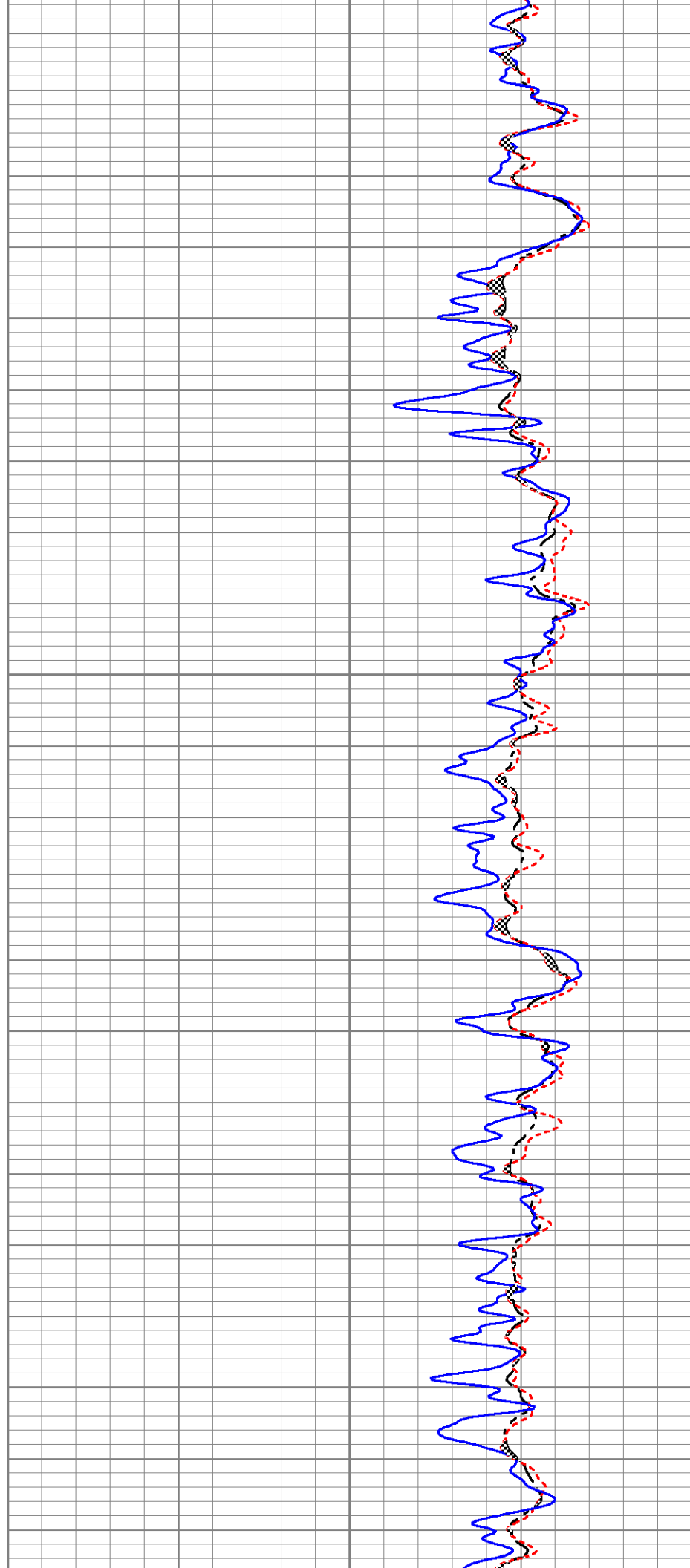
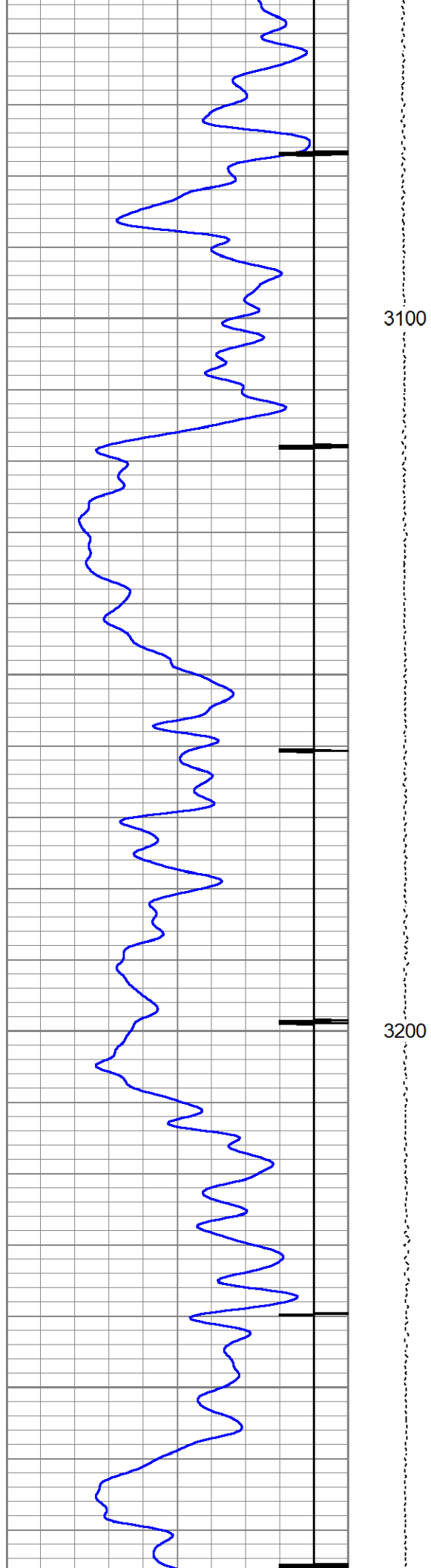
2700

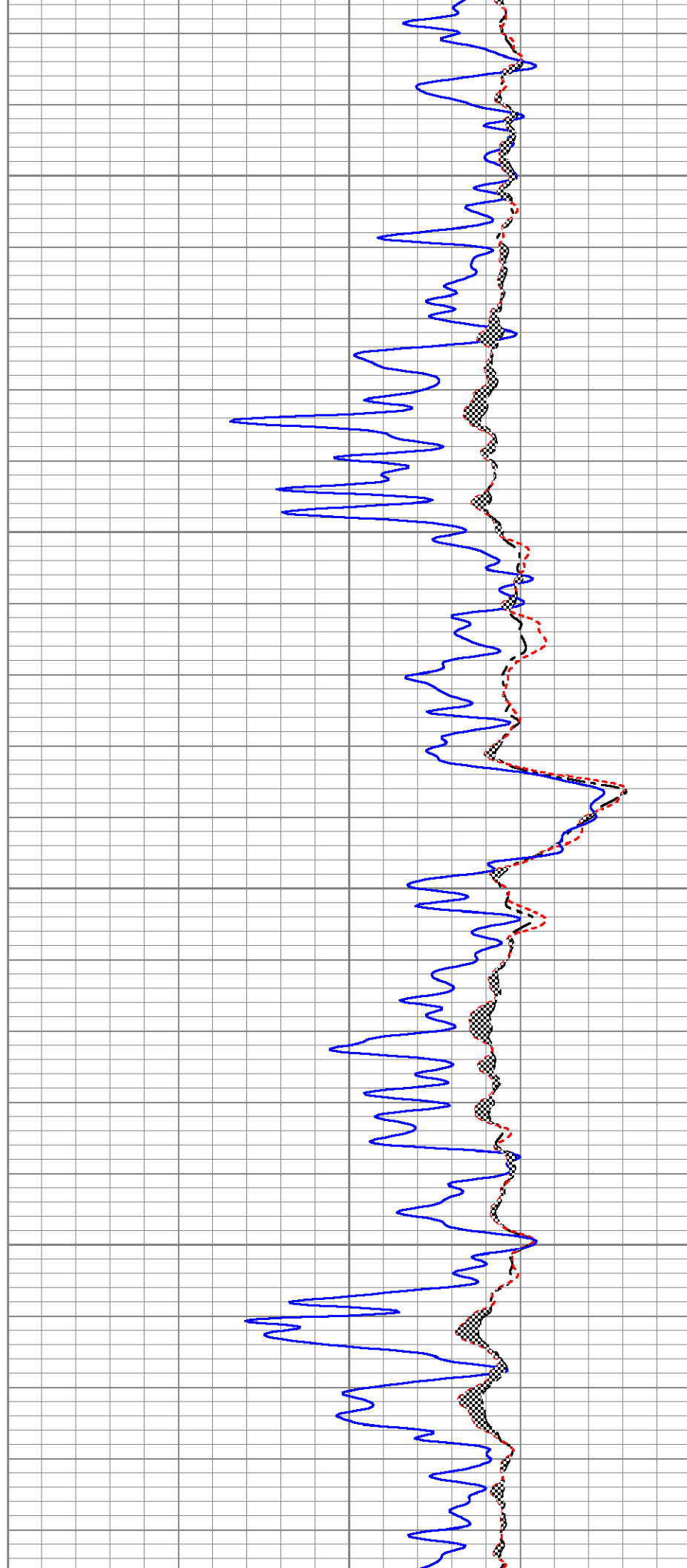
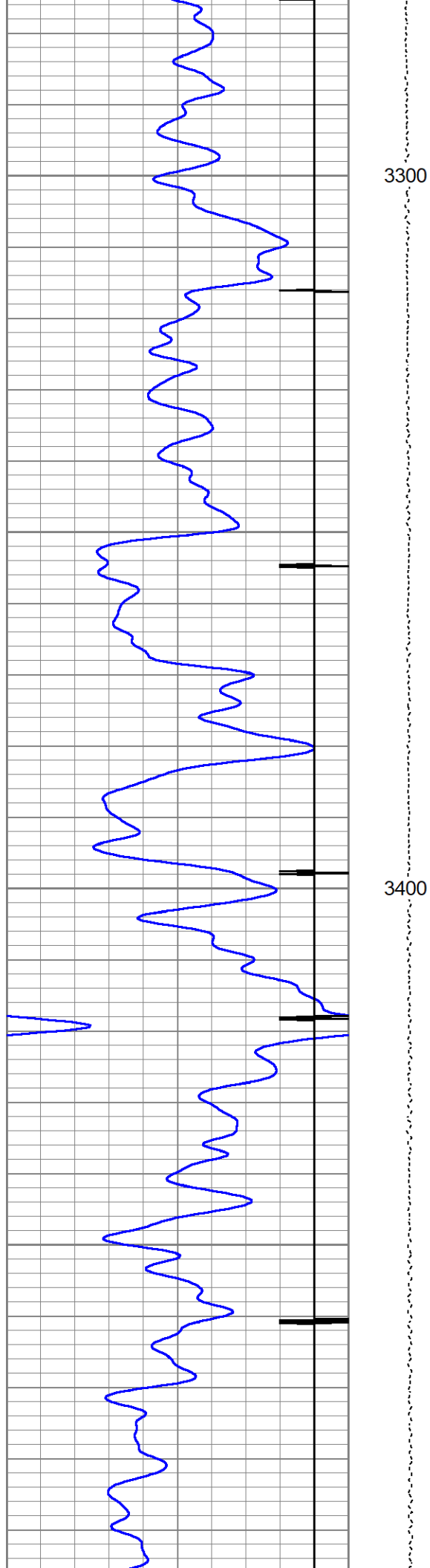
2800

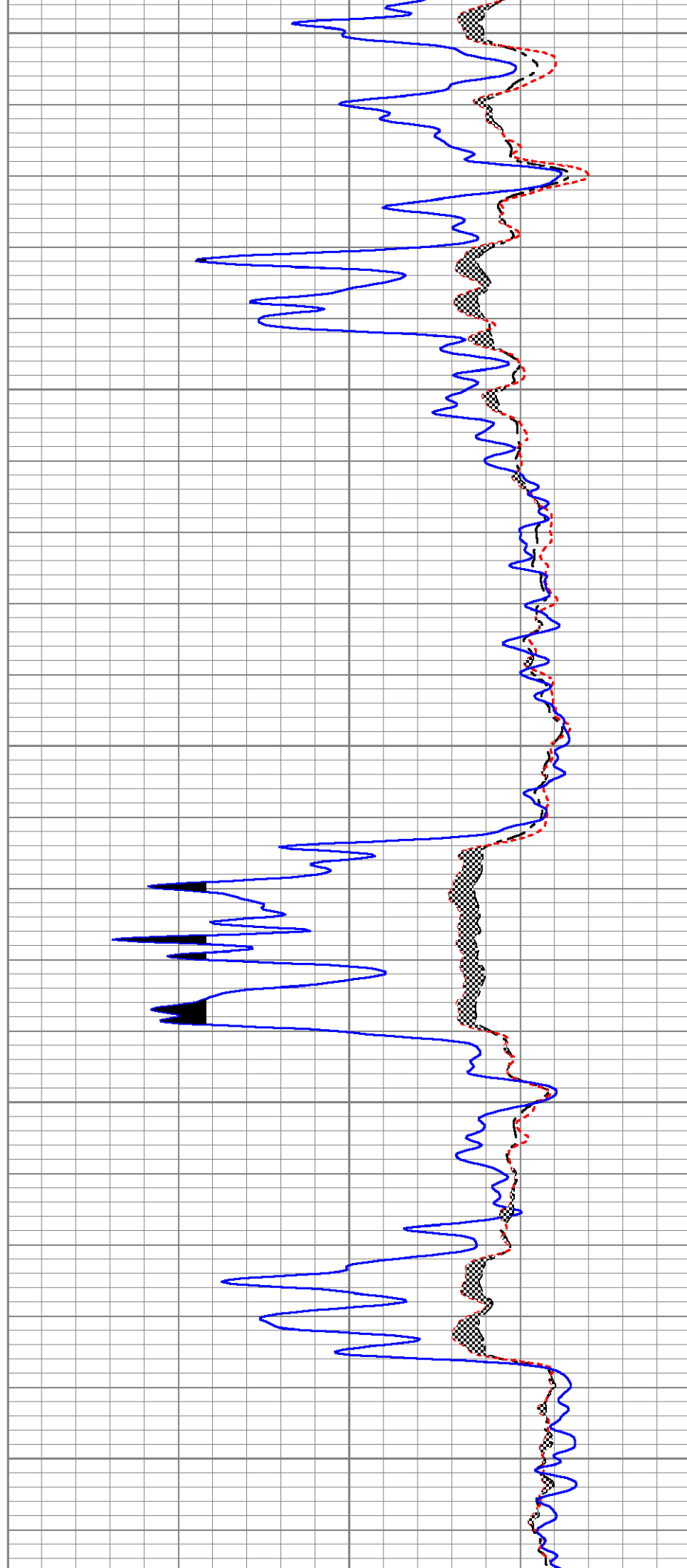
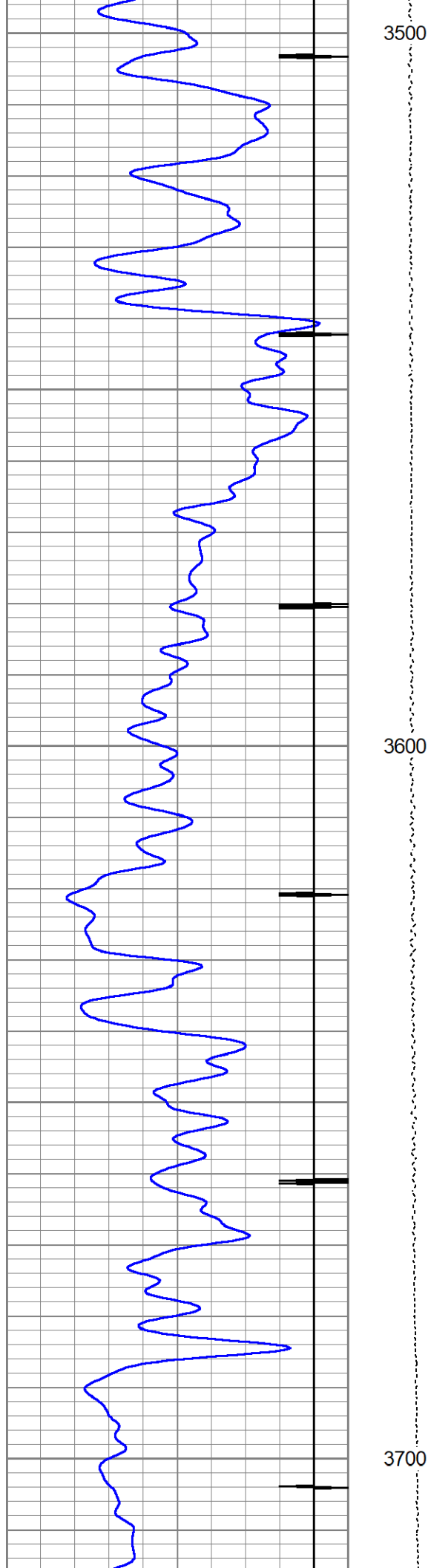


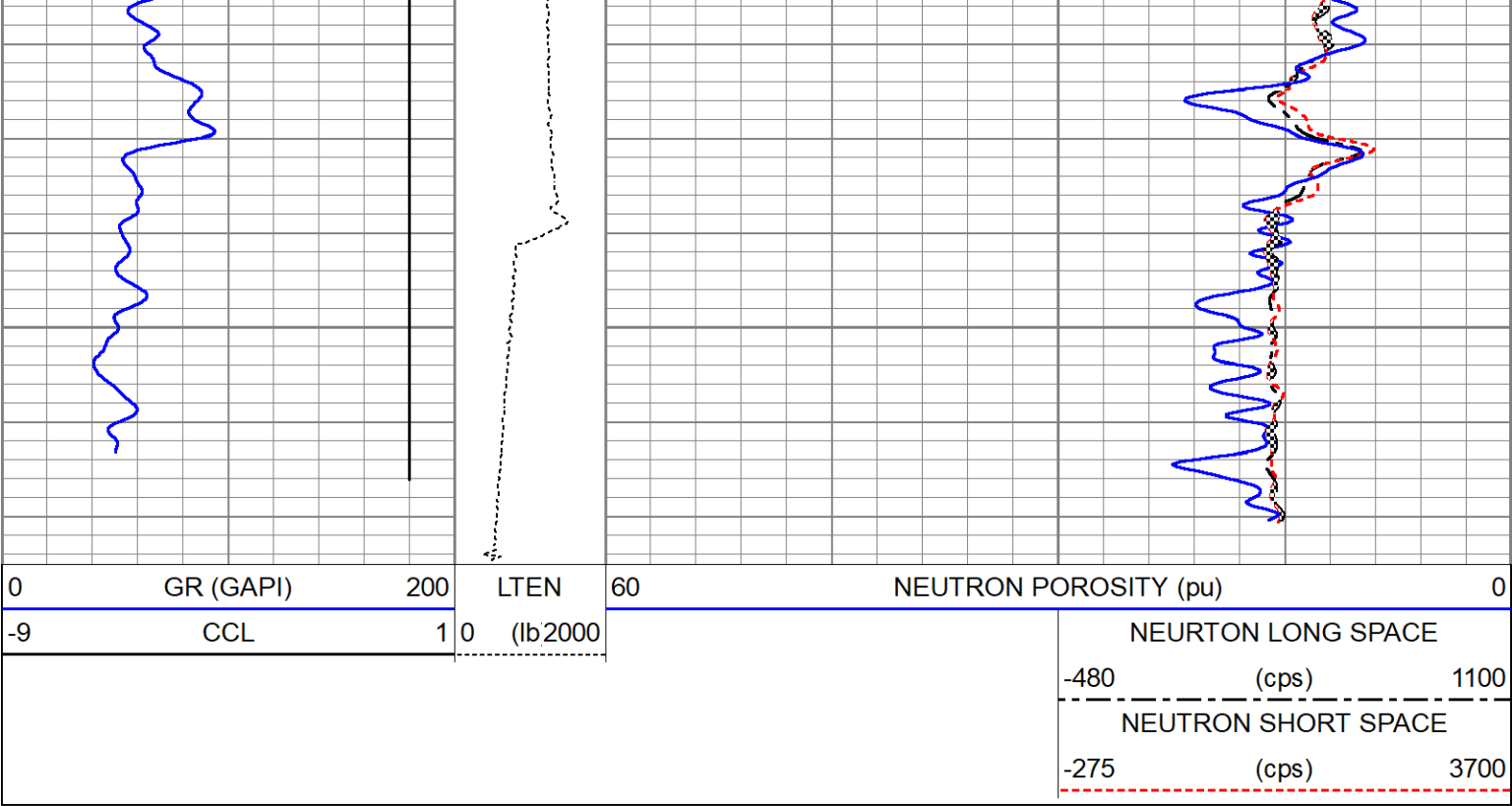












Calibration Report				
Database File	jaques 11.db			
Dataset Pathname	pass3.3			
Dataset Creation	Tue Jul 24 10:13:10 2018			
Compensated Neutron Calibration Report				
Type / Serial:		Probe_B / 090117		
Source / Verifier:		/		
Temperature:				
SHOP CALIBRATION		Fri Jan 30 17:39:55 2009		
	Cal Tube	Units		
Tank Ratio		SS/LS		
Tank Porosity		pu		
LS Detector		cps		
SS Detector		cps		
Tool Ratio		SS/LS		
Tool Porosity		pu		
Tool Constant =				
Field Verifier	SS Detector	LS Detector	Ratio	Porosity
PRE-SURVEY VERIFICATION				
	SS Detector	LS Detector	Ratio	Porosity
POST-SURVEY VERIFICATION				
	SS Detector	LS Detector	Ratio	Porosity
Gamma Ray Calibration Report				

Serial Number:	275
Tool Model:	Probe

Performed:	Tue Jul 24 08:29:13 2018	
Calibrator Value:	1.0	GAPI
Background Reading:	0.0	cps
Calibrator Reading:	1.0	cps
Sensitivity:	1.0000	GAPI/cps

### Segmented Cement Bond Log Calibration Report

Serial Number:	allied	
Tool Model:	Probe275T	
Calibration Casing Diameter:	5.500	in
Calibration Depth:	56.117	ft

Master Calibration, performed Tue Jul 24 09:53:32 2018:

	Raw (v)		Calibrated (mv)		Results	
	Zero	Cal	Zero	Cal	Gain	Offset
3'	0.000	0.825	0.500	71.921	86.520	0.500
CAL	0.003	0.974				
5'	0.000	0.732	0.500	71.921	97.634	0.500
SUM						
S1	0.000	0.827	0.000	100.000	120.887	-0.000
S2	0.000	0.838	0.000	100.000	119.339	-0.000
S3	-0.003	0.822	0.000	100.000	121.312	0.336
S4	-0.000	0.811	0.000	100.000	123.263	0.010
S5	-0.001	0.805	0.000	100.000	124.206	0.073
S6	-0.002	0.823	0.000	100.000	121.276	0.232
S7	0.000	0.807	0.000	100.000	123.964	-0.000
S8	0.000	0.850	0.000	100.000	117.700	-0.000

Internal Reference Calibration, performed Tue Jun 19 13:25:20 2012:

	Raw (v)		Calibrated (v)		Results	
	Zero	Cal	Zero	Cal	Gain	Offset
CAL	0.000	0.000	0.003	0.974	1.000	0.000

Air Zero Calibration, performed Thu Oct 19 09:04:41 2017:

	Raw (v)	Calibrated (v)	Results
	Zero	Zero	Offset
3'	0.000	0.000	0.000
5'	0.000	0.000	0.000
SUM			
S1	0.000	0.000	0.000
S2	0.000	0.000	0.000
S3	0.000	0.000	0.000
S4	0.000	0.000	0.000
S5	0.000	0.000	0.000
S6	0.000	0.000	0.000
S7	0.000	0.000	0.000
S8	0.000	0.000	0.000