



RADIAL CEMENT BOND LOG
GAMMA RAY / CCL

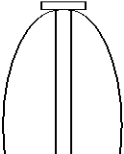
Company CATAMOUNT		Company CATAMOUNT	
Well JAQUES 10		Well JAQUES 10	
Field IGNACIO		Field IGNACIO	
County LA PLATA		County LA PLATA	
State NM		State NM	
Location: 759' FSL & 1947 FWL		Location: 759' FSL & 1947 FWL	
Permanent Datum SEC 27 TWP 33N RGE 8W		Permanent Datum SEC 27 TWP 33N RGE 8W	
Log Measured From KB 11		Log Measured From KB 11	
Drilling Measured From KELLY BUSHING		Drilling Measured From KELLY BUSHING	
Other Services		Other Services	
API # : 05-067-10020		API # : 05-067-10020	
Elevation		Elevation	
K.B. 6717		K.B. 6717	
D.F. 6718		D.F. 6718	
G.L. 6728		G.L. 6728	
Date		Date	
Run Number 1		Run Number 1	
Depth Driller 4253		Depth Driller 4253	
Depth Logger 4180		Depth Logger 4180	
Bottom Logged Interval 4180		Bottom Logged Interval 4180	
Top Log Interval SURFACE		Top Log Interval SURFACE	
Open Hole Size N/A		Open Hole Size N/A	
Type Fluid WATER		Type Fluid WATER	
Density / Viscosity 8.4		Density / Viscosity 8.4	
Max. Recorded Temp. N/A		Max. Recorded Temp. N/A	
Estimated Cement Top SEE LOG		Estimated Cement Top SEE LOG	
Time Well Ready 8:00AM		Time Well Ready 8:00AM	
Time Logger on Bottom 12:00		Time Logger on Bottom 12:00	
Equipment Number 110		Equipment Number 110	
Location FARMINGTON		Location FARMINGTON	
Recorded By SWEAT		Recorded By SWEAT	
Witnessed By MARK WOLFE		Witnessed By MARK WOLFE	
Borehole Record		Borehole Record	
Run Number		Run Number	
Bit		Bit	
From		From	
To		To	
Size		Size	
Weight		Weight	
From		From	
To		To	
Casing Record		Casing Record	
Surface String		Surface String	
Prot. String		Prot. String	
Production String		Production String	
Liner		Liner	
Size		Size	
Wgt/Ft		Wgt/Ft	
Top		Top	
Bottom		Bottom	

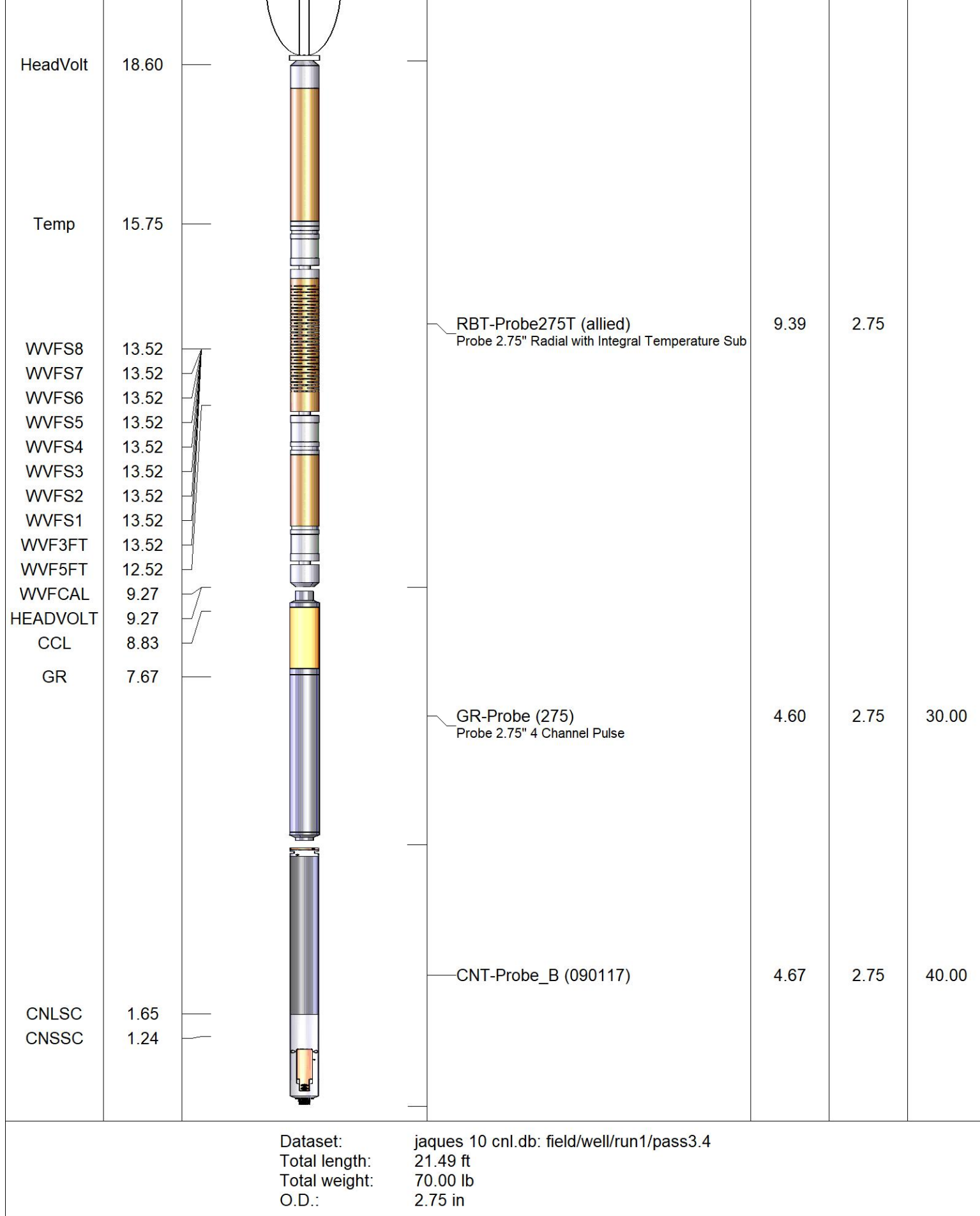
<<< Fold Here >>>

All interpretations are opinions based on inferences from electrical or other measurements and we cannot and do not guarantee the accuracy or correctness of any interpretation, and we shall not, except in the case of gross or willful negligence on our part, be liable or responsible for any loss, costs, damages, or expenses incurred or sustained by anyone resulting from any interpretation made by any of our officers, agents or employees. These interpretations are also subject to our general terms and conditions set out in our current Price Schedule.


Comments

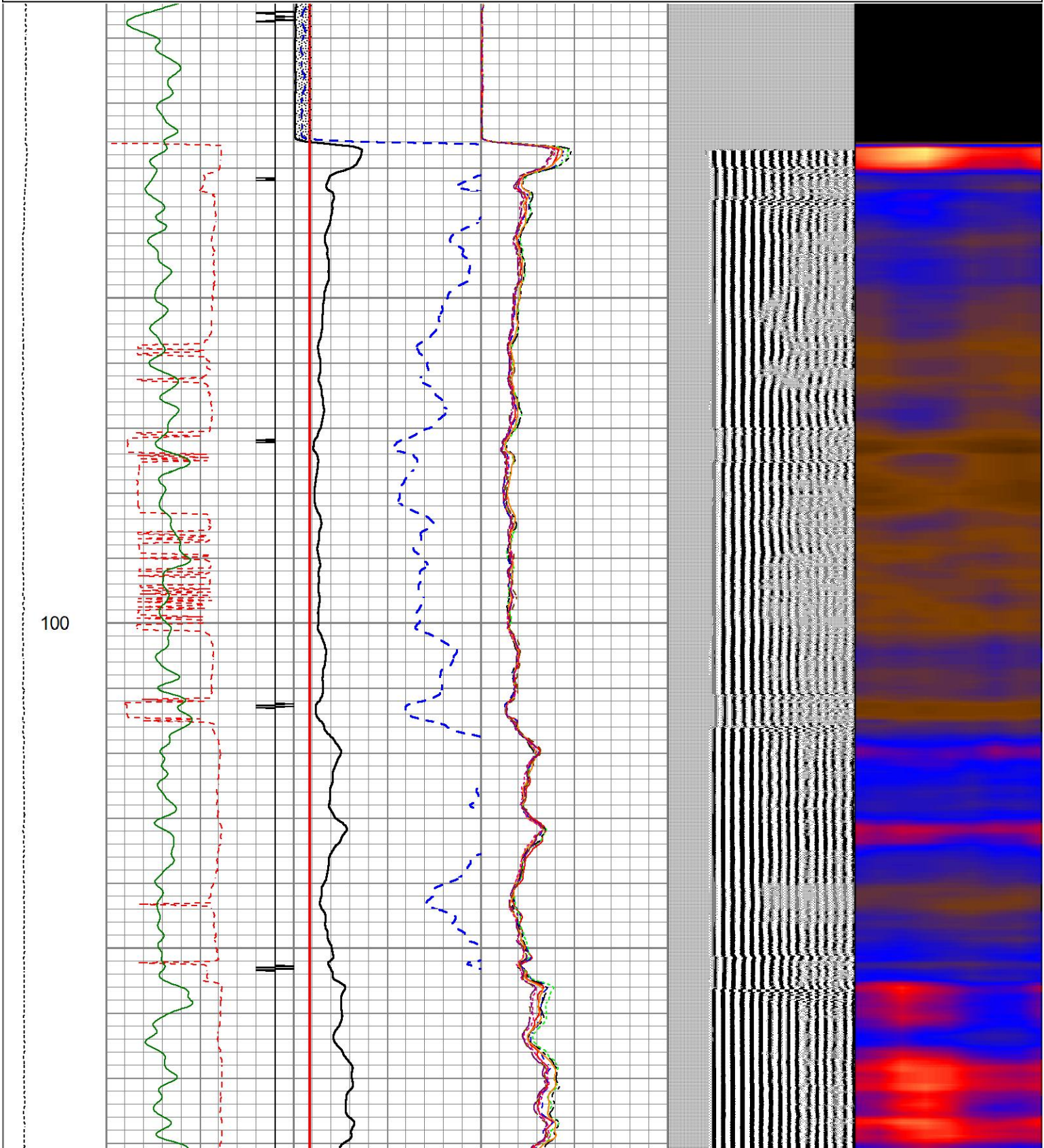
THANK YOU FOR USING BASIN WELL LOGGING

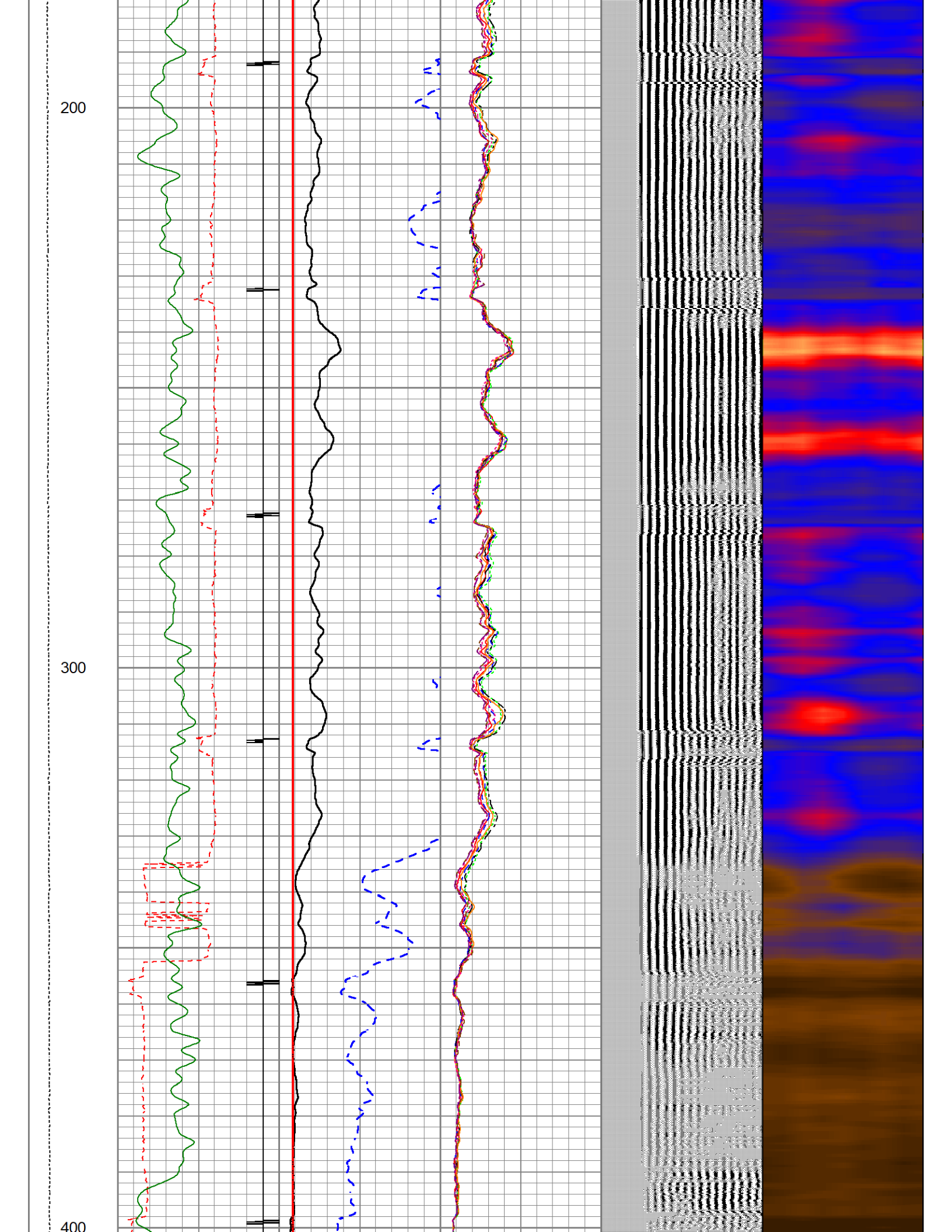
Sensor	Offset (ft)	Schematic	Description	Length (ft)	O.D. (in)	Weight (lb)
			CENT-PTS275	2.83	2.75	

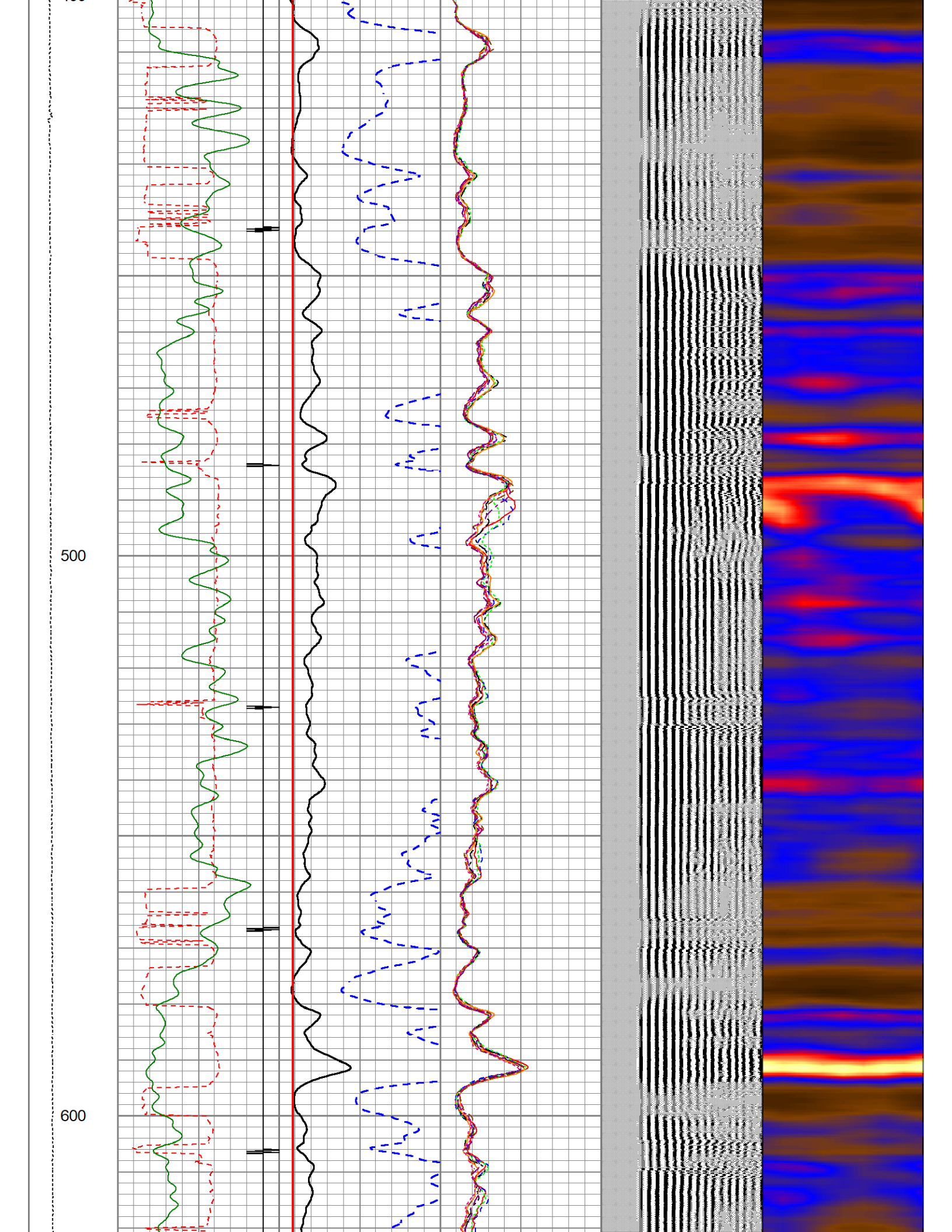


Database File	jaques 10 cnl.db
Dataset Pathname	pass3.4
Presentation Format	rcblsect
Dataset Creation	Tue Jul 24 11:30:00 2018
Charted by	Depth in Feet scaled 1:240

Charted by				Depth in Feet scaled 1.240													
LTEN	345	TT (usec)	245	0	AMP (mV)	100	0	AMPS1	120	200	VDL (usec)	1200	1	Cement Map	8		
0	(lb1450	-9	CCL	1	Amplifide Amplitude		0	AMPS2	120								
		0	GR (GAPI)	200	0	(mV)	20	0	AMPS3							120	
					0	TEMP (degF)	200	0	AMPS4							120	
								0	AMPS5							120	
								0	AMPS6							120	
								0	AMPS7							120	
								0	AMPS8							120	

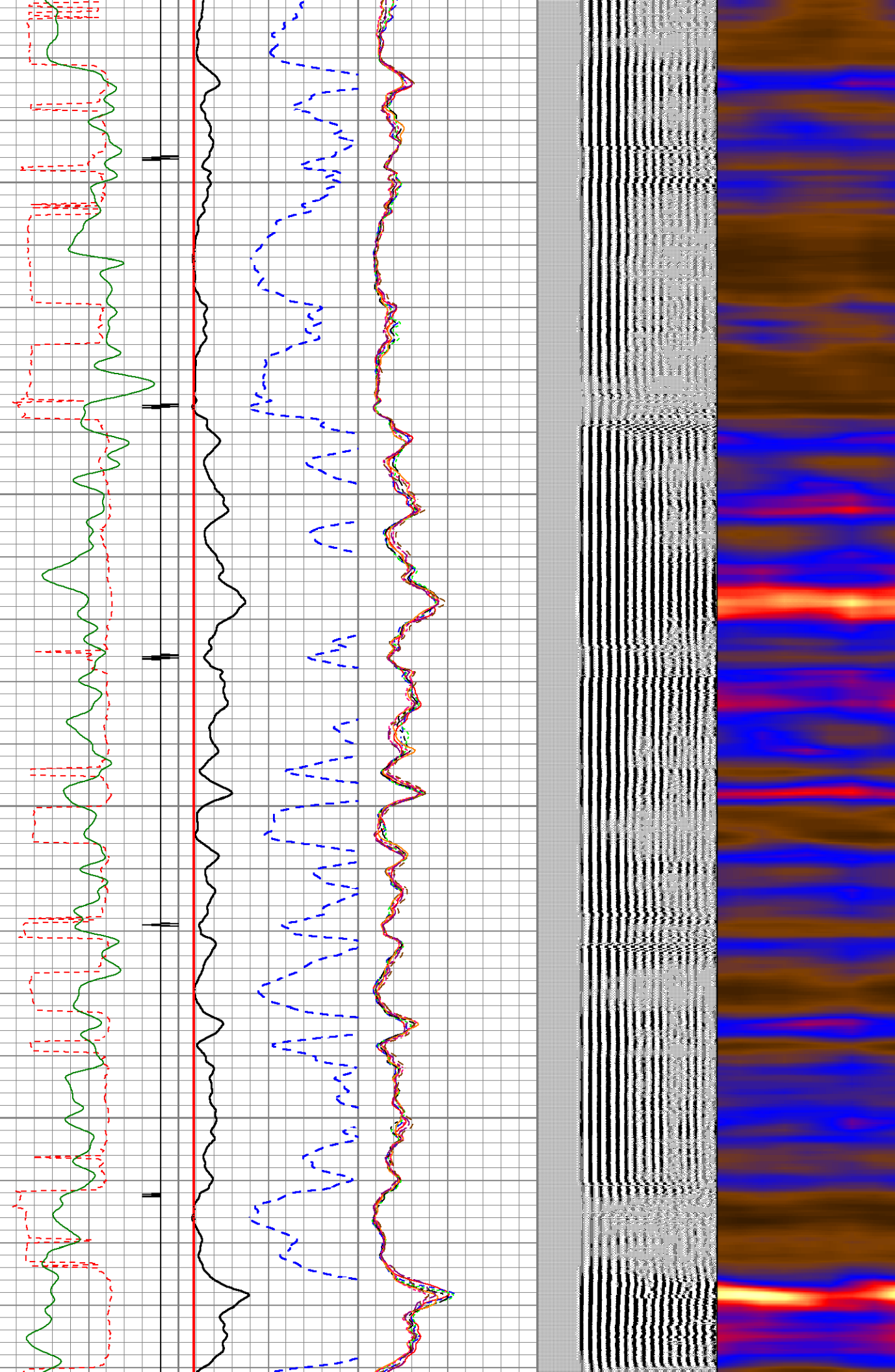






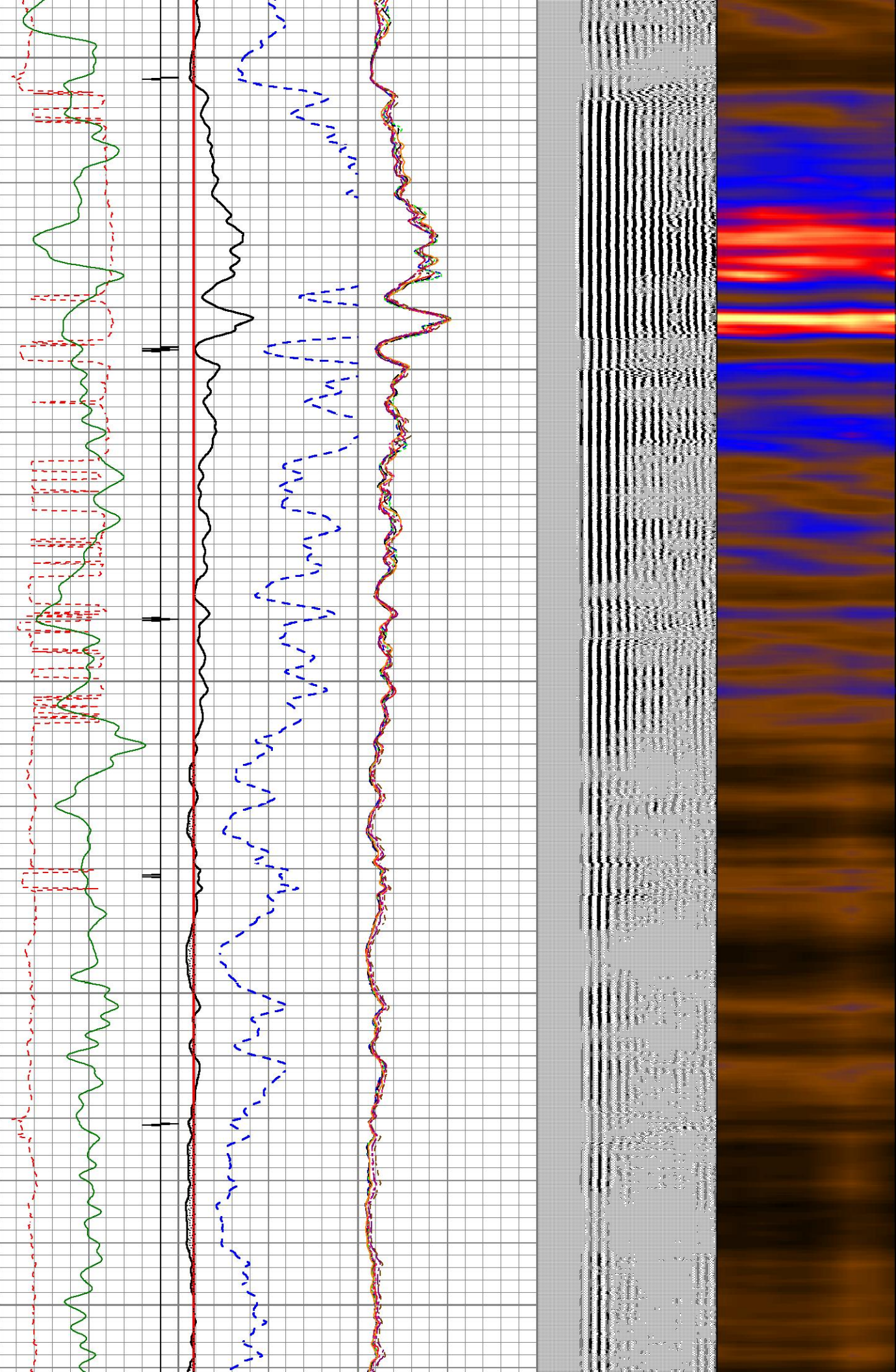
700

800



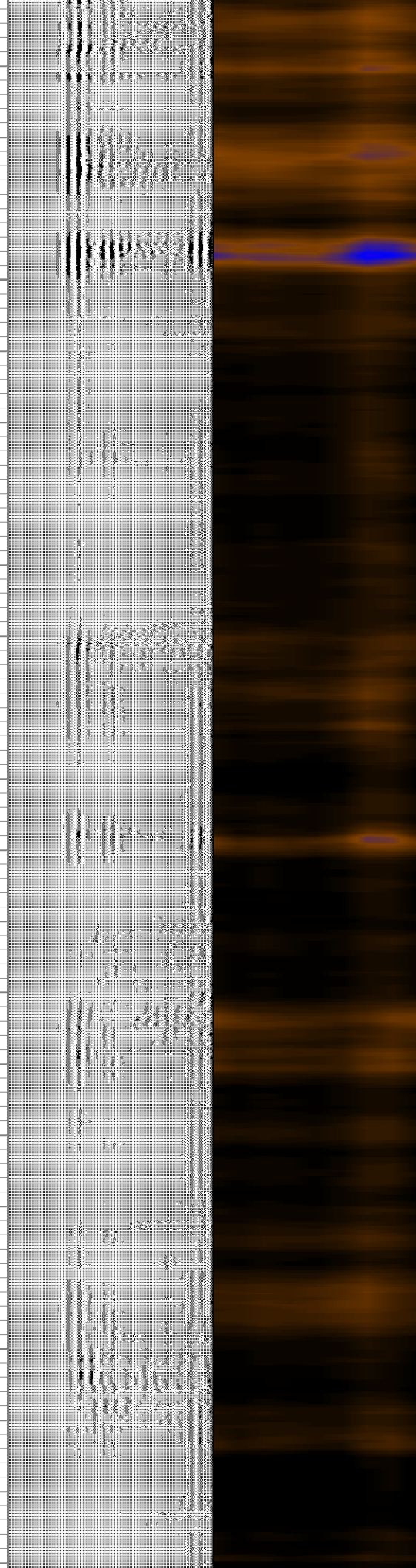
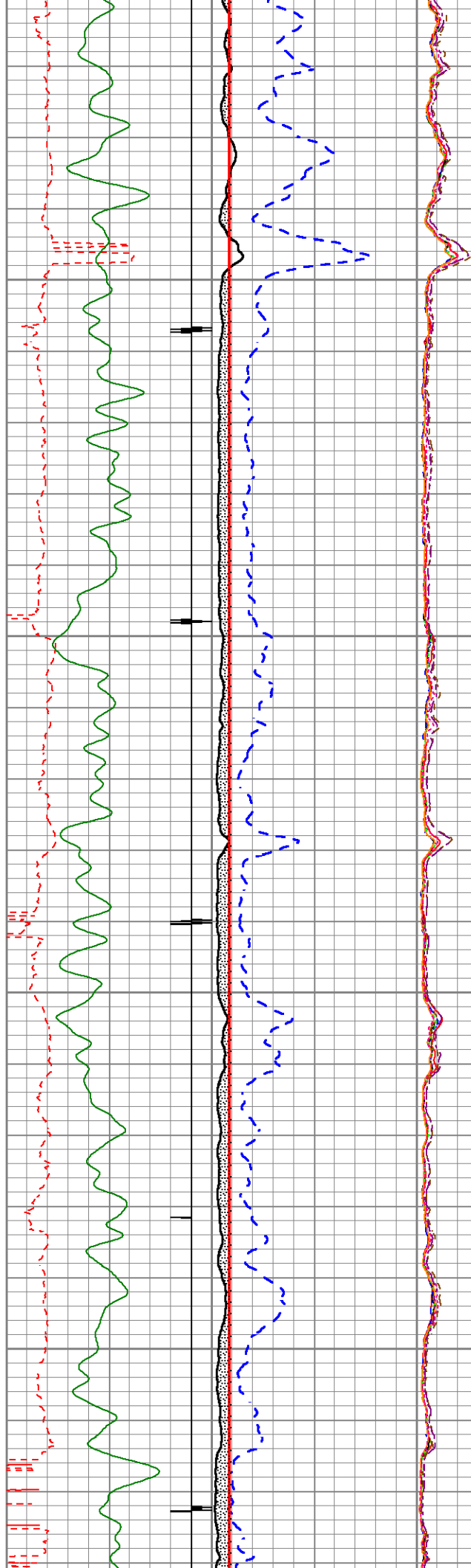
900

1000



1100

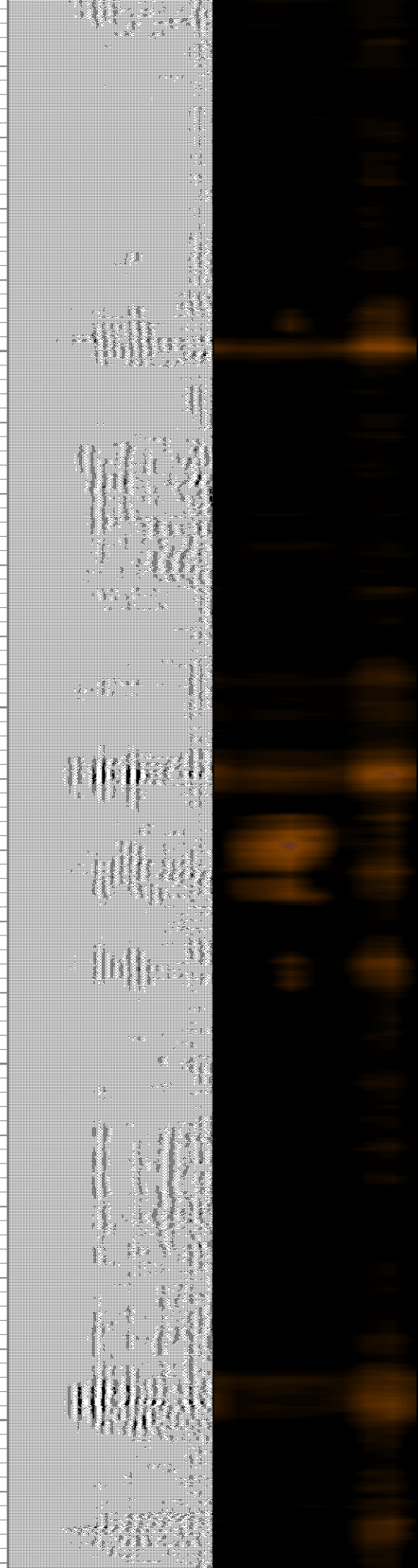
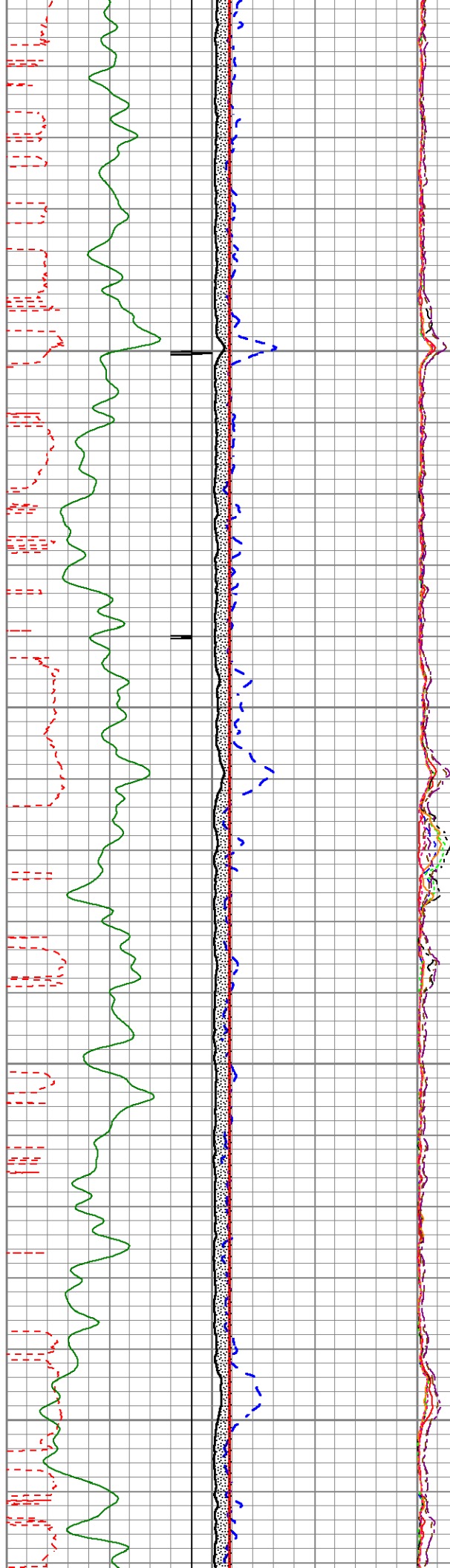
1200





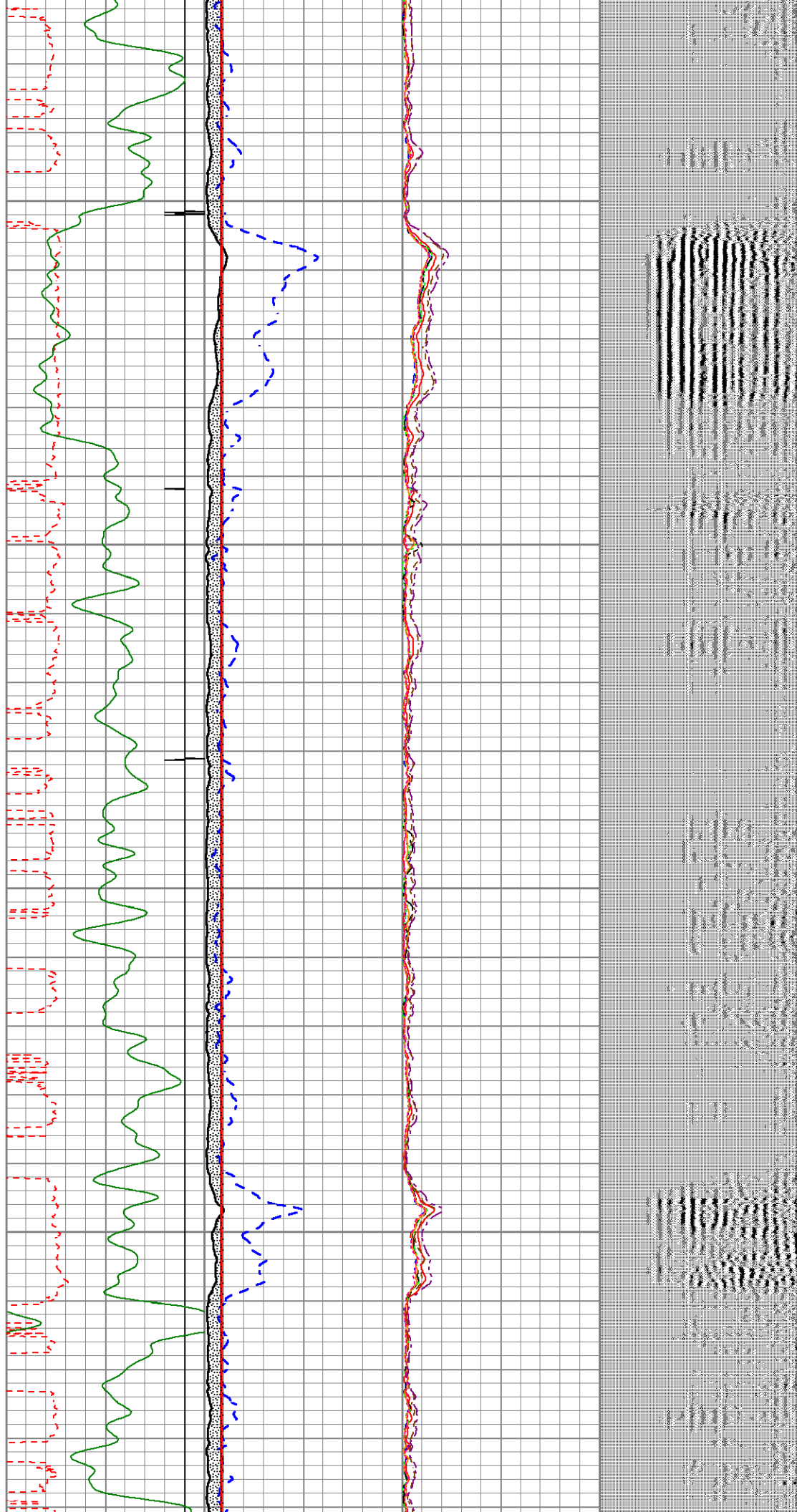
1600

1700



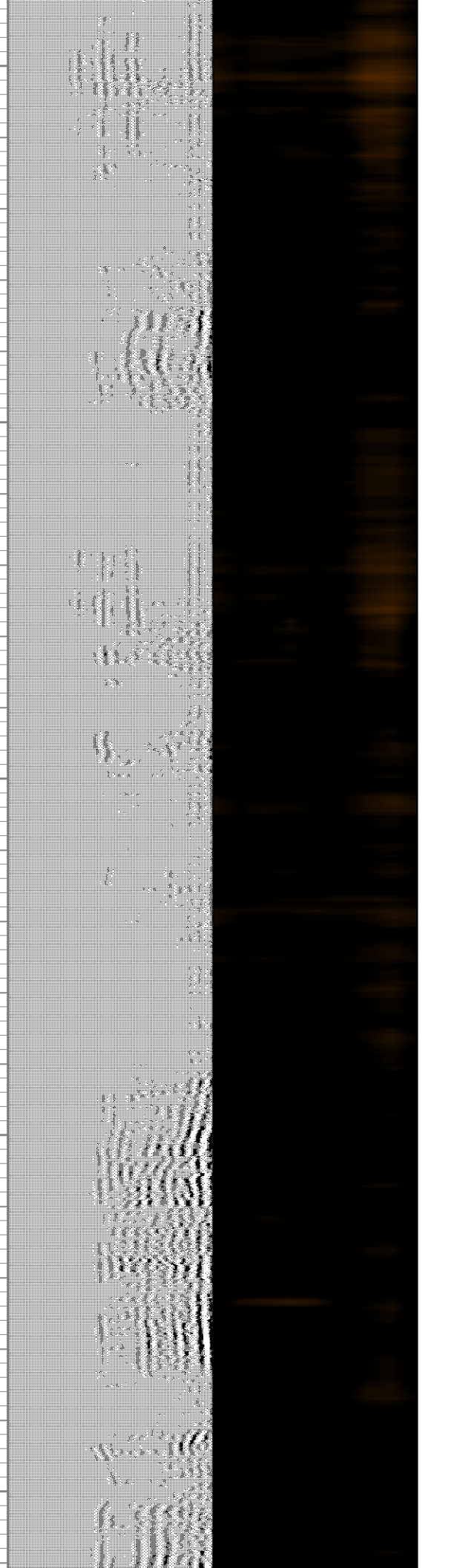
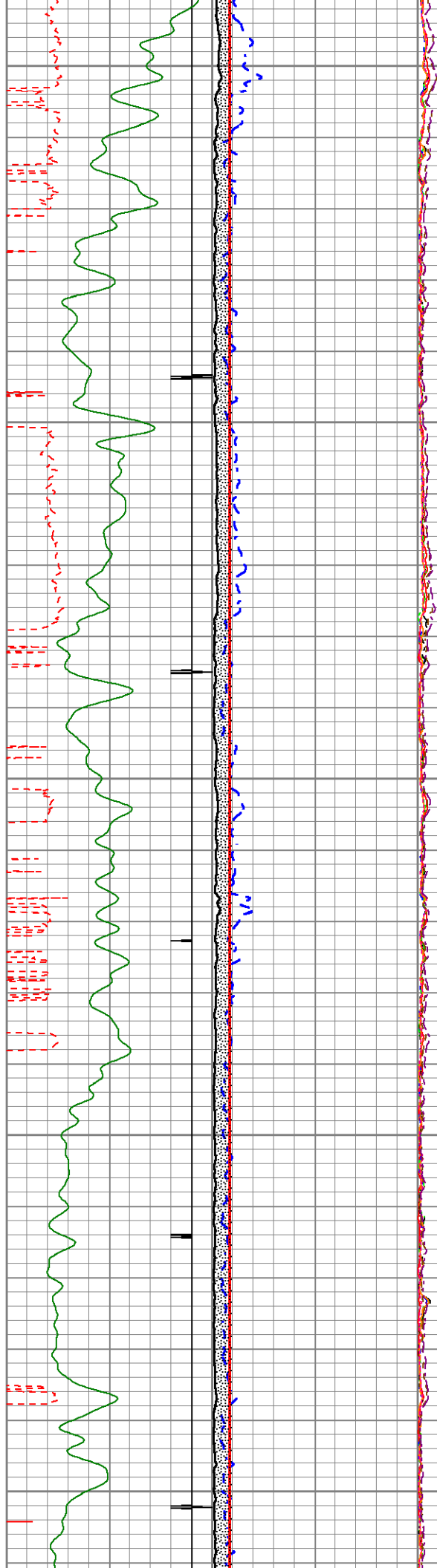
1800

1900



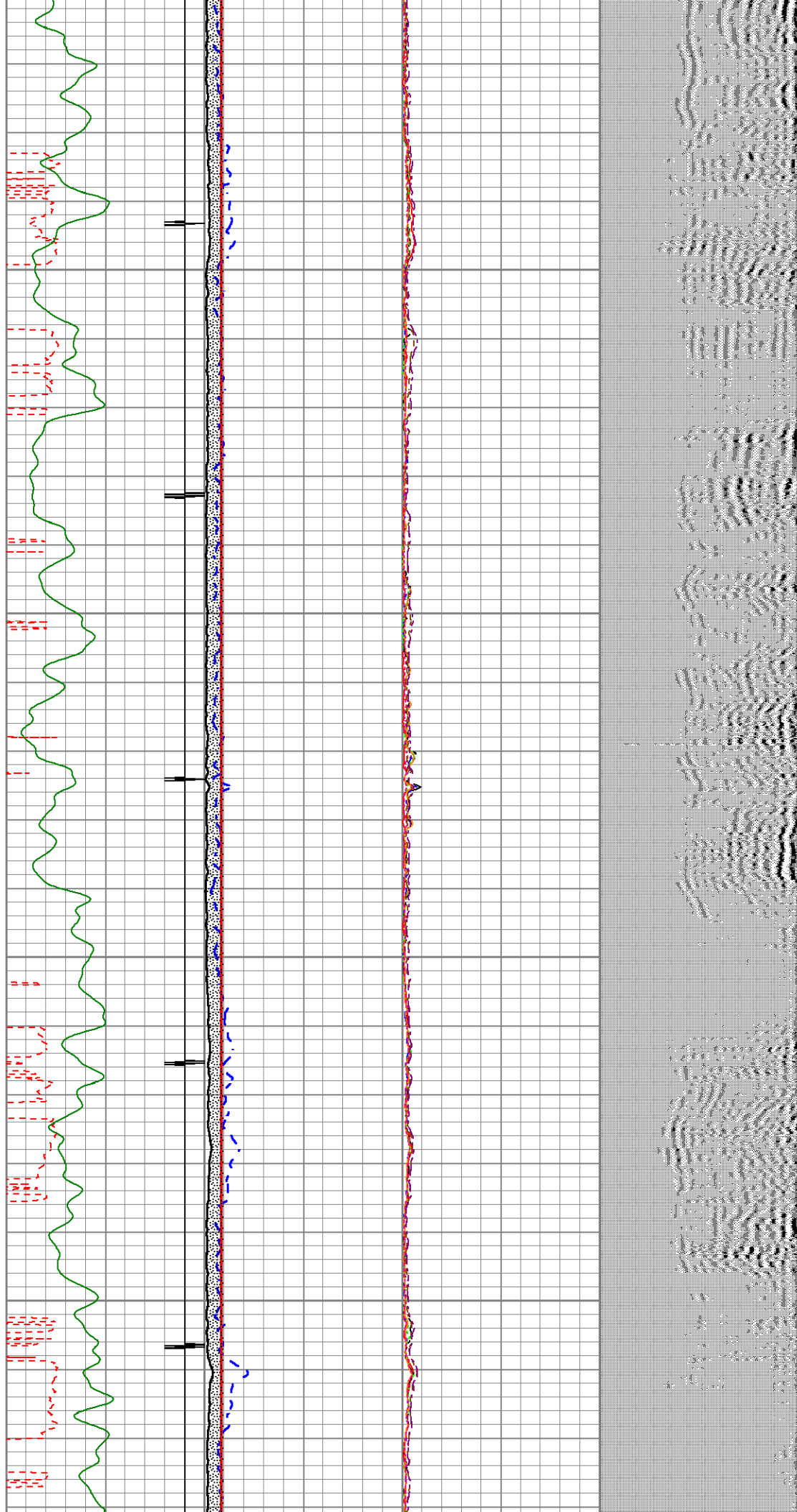
2000

2100



2200

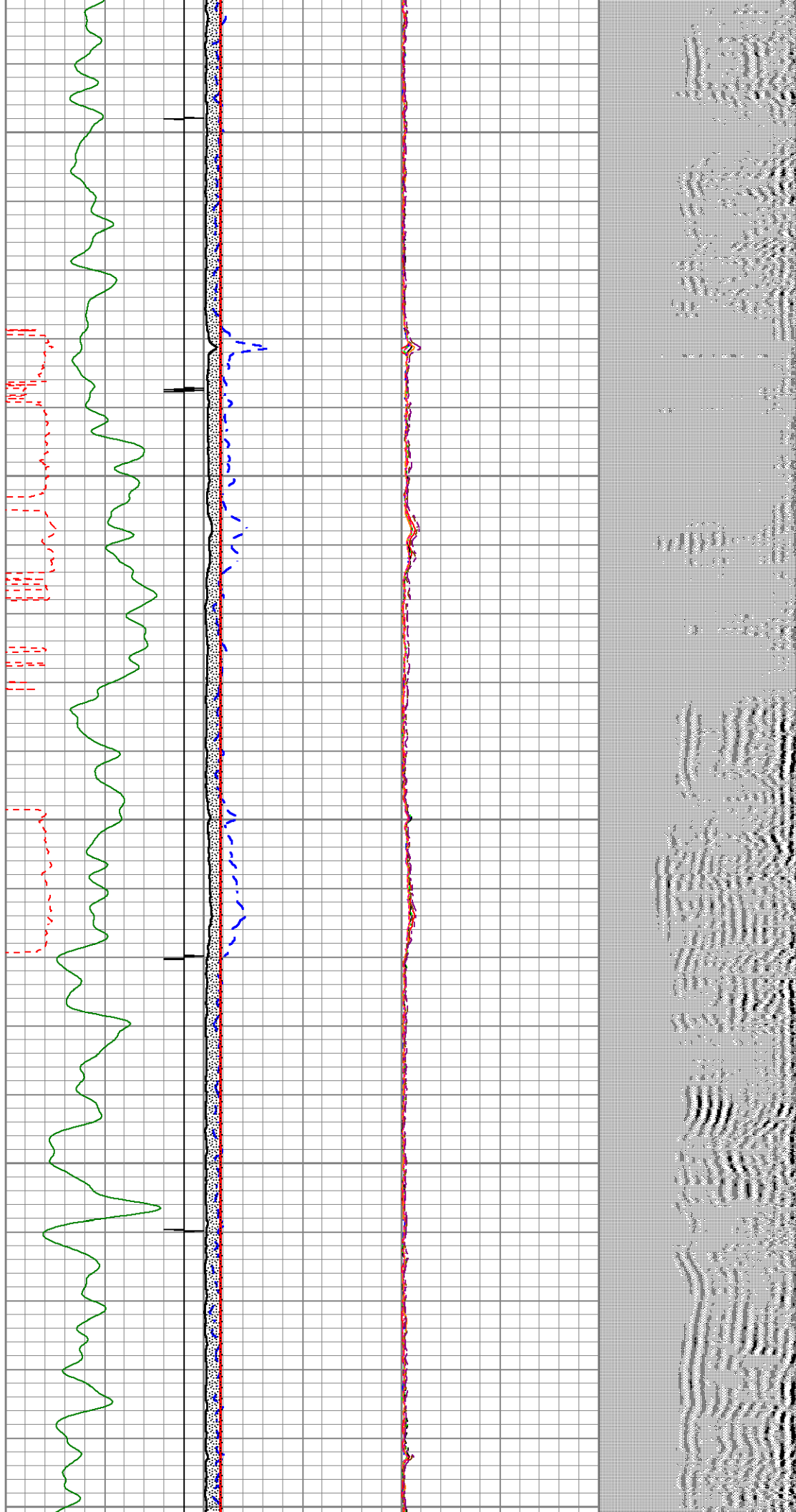
2300



2400

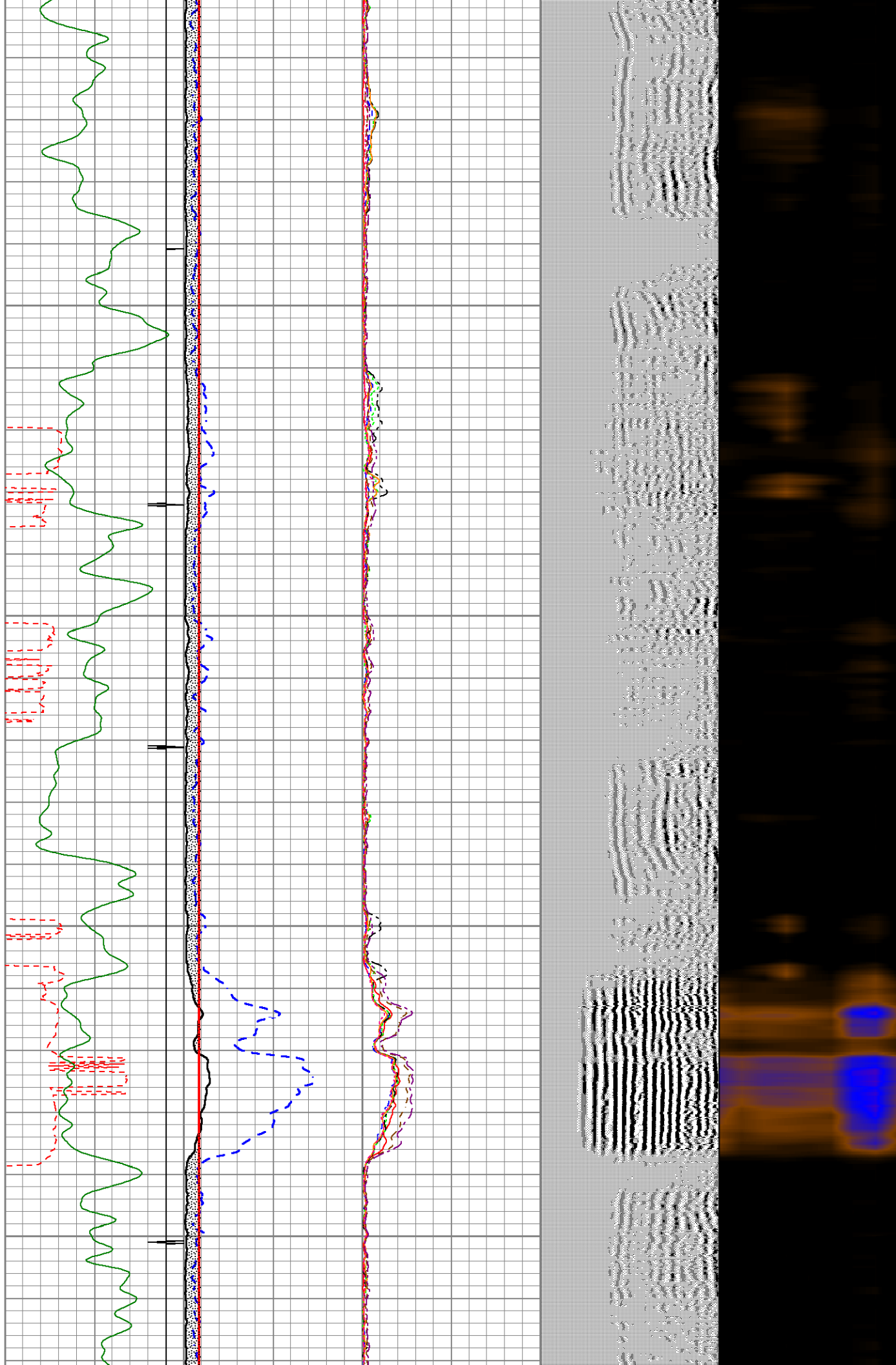
2500

2600



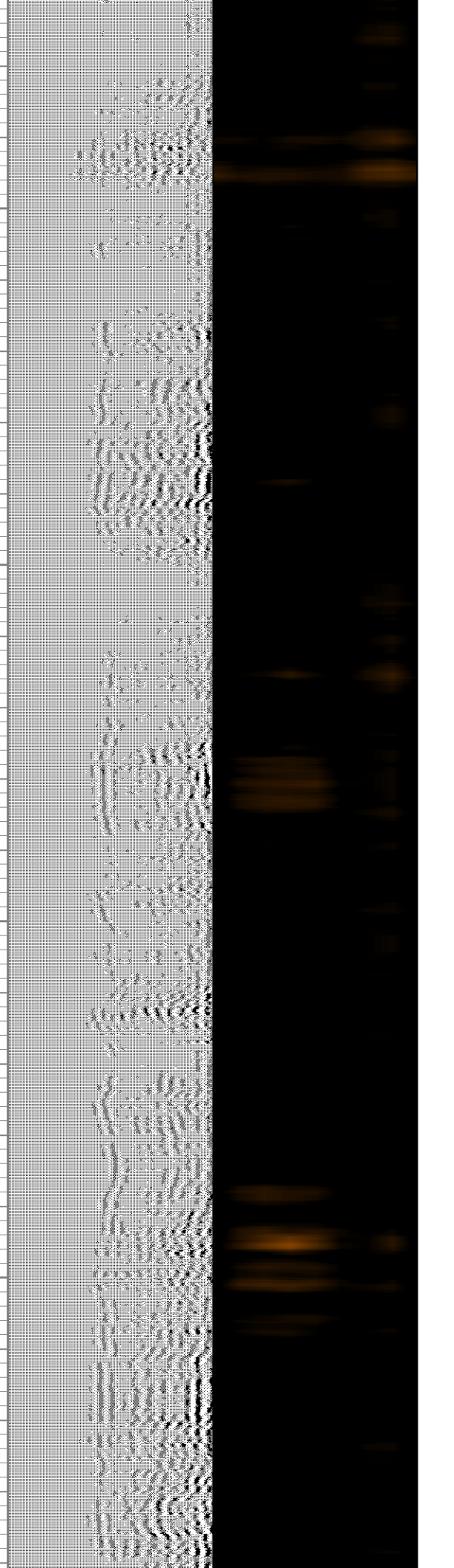
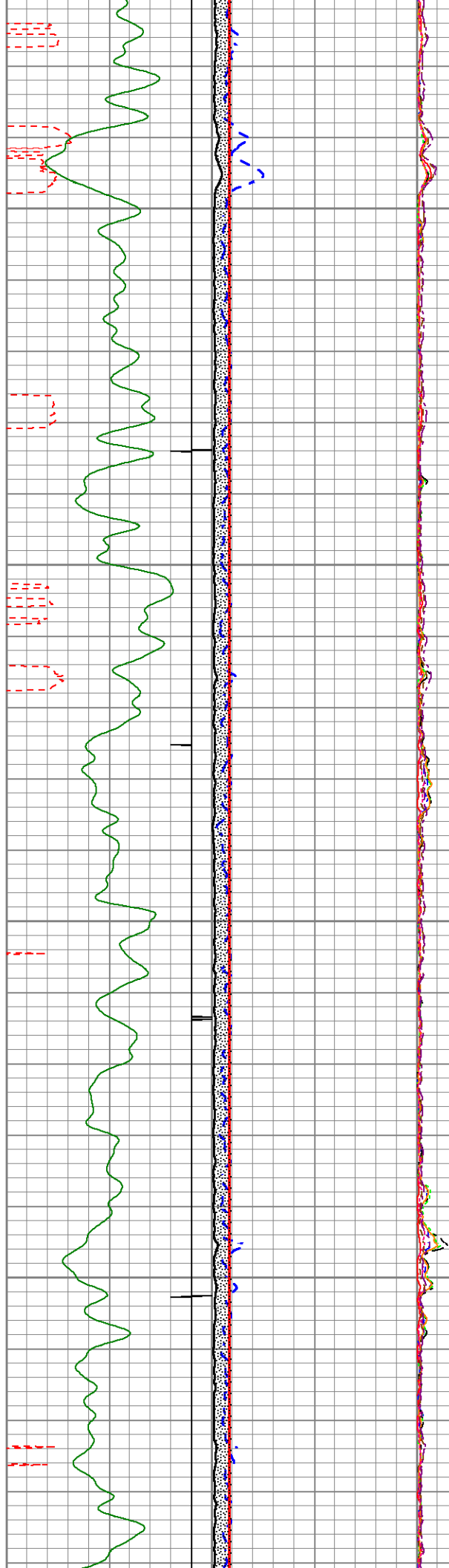
2700

2800



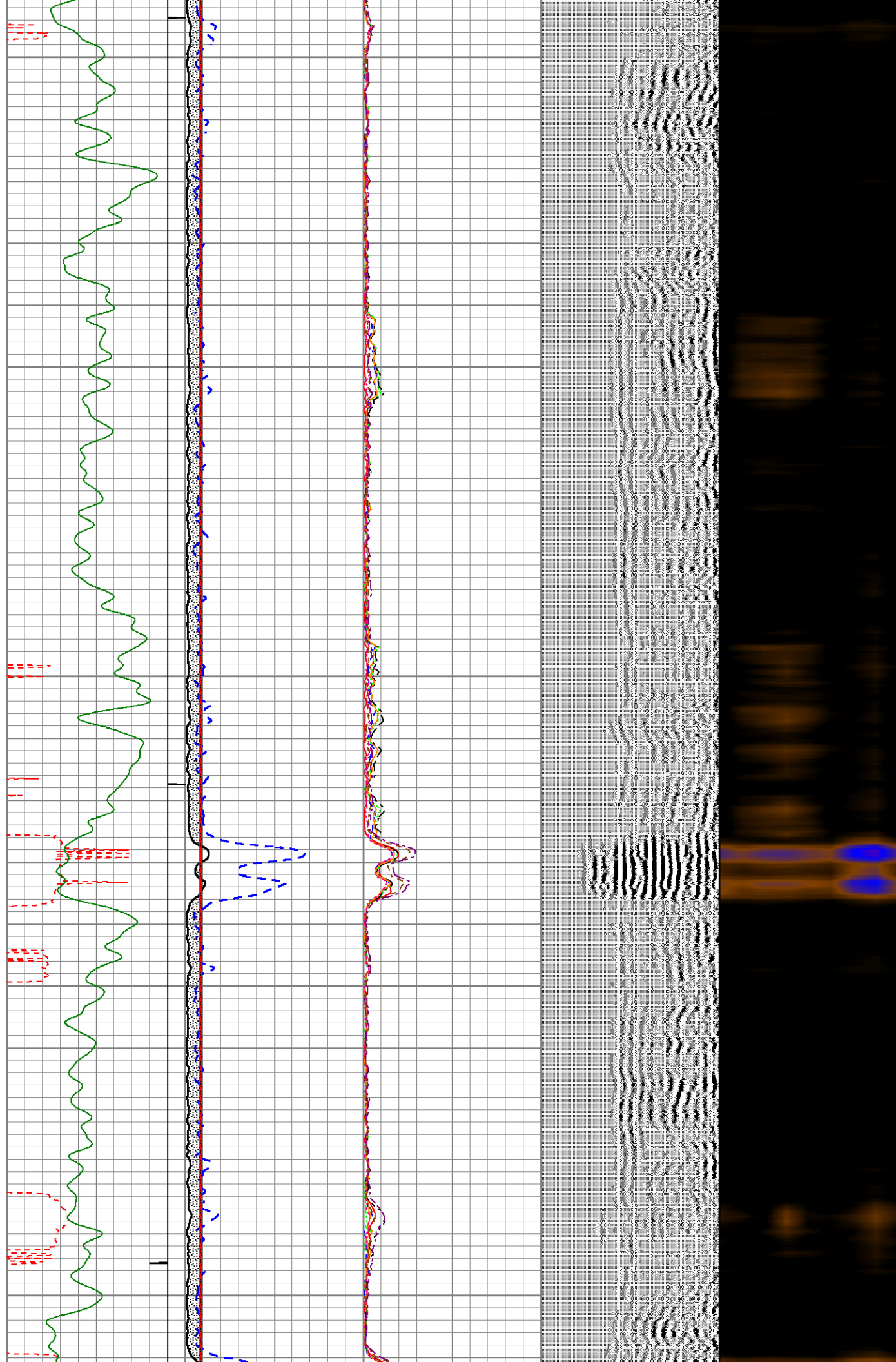
2900

3000



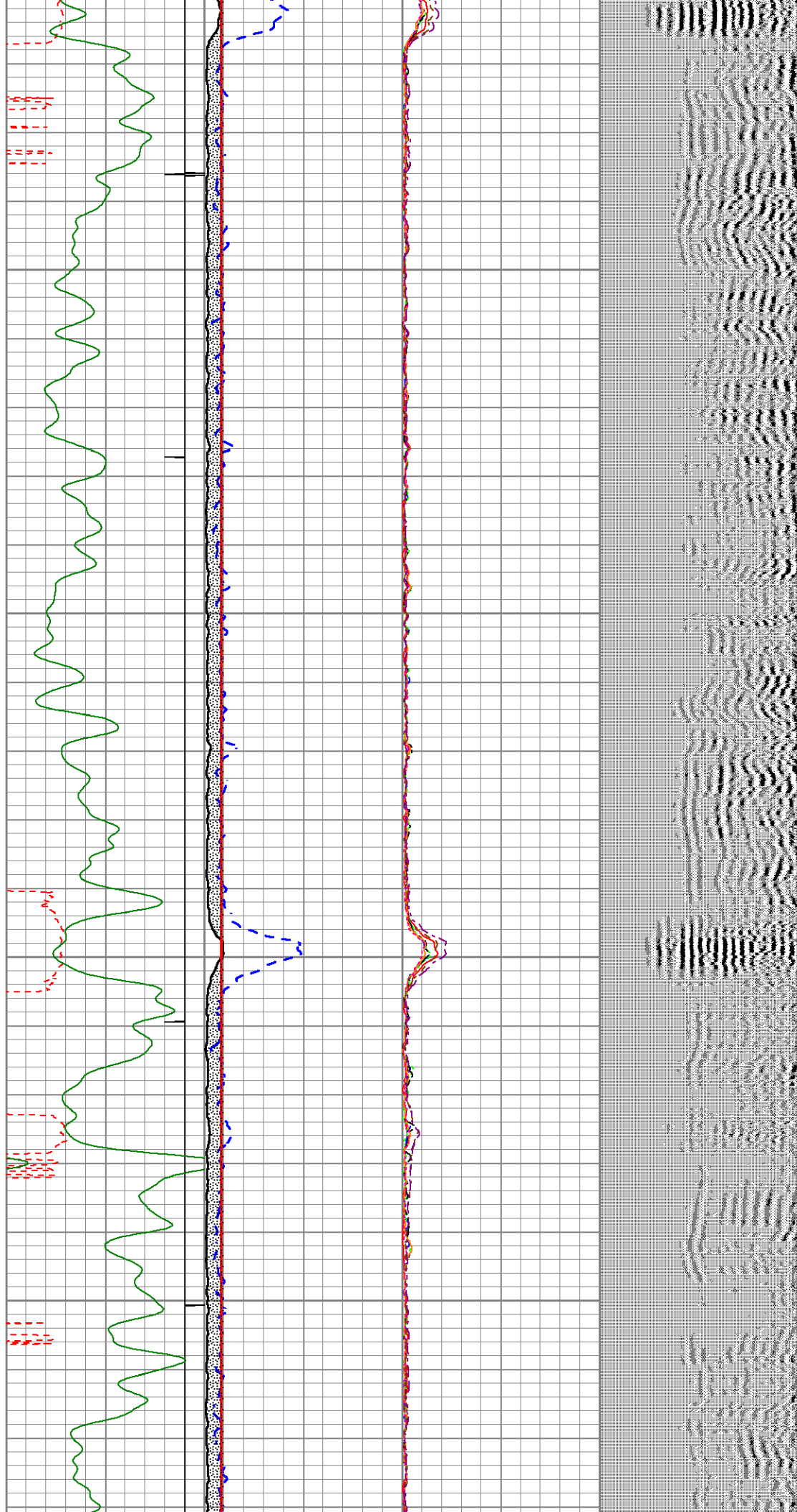
3100

3200



3300

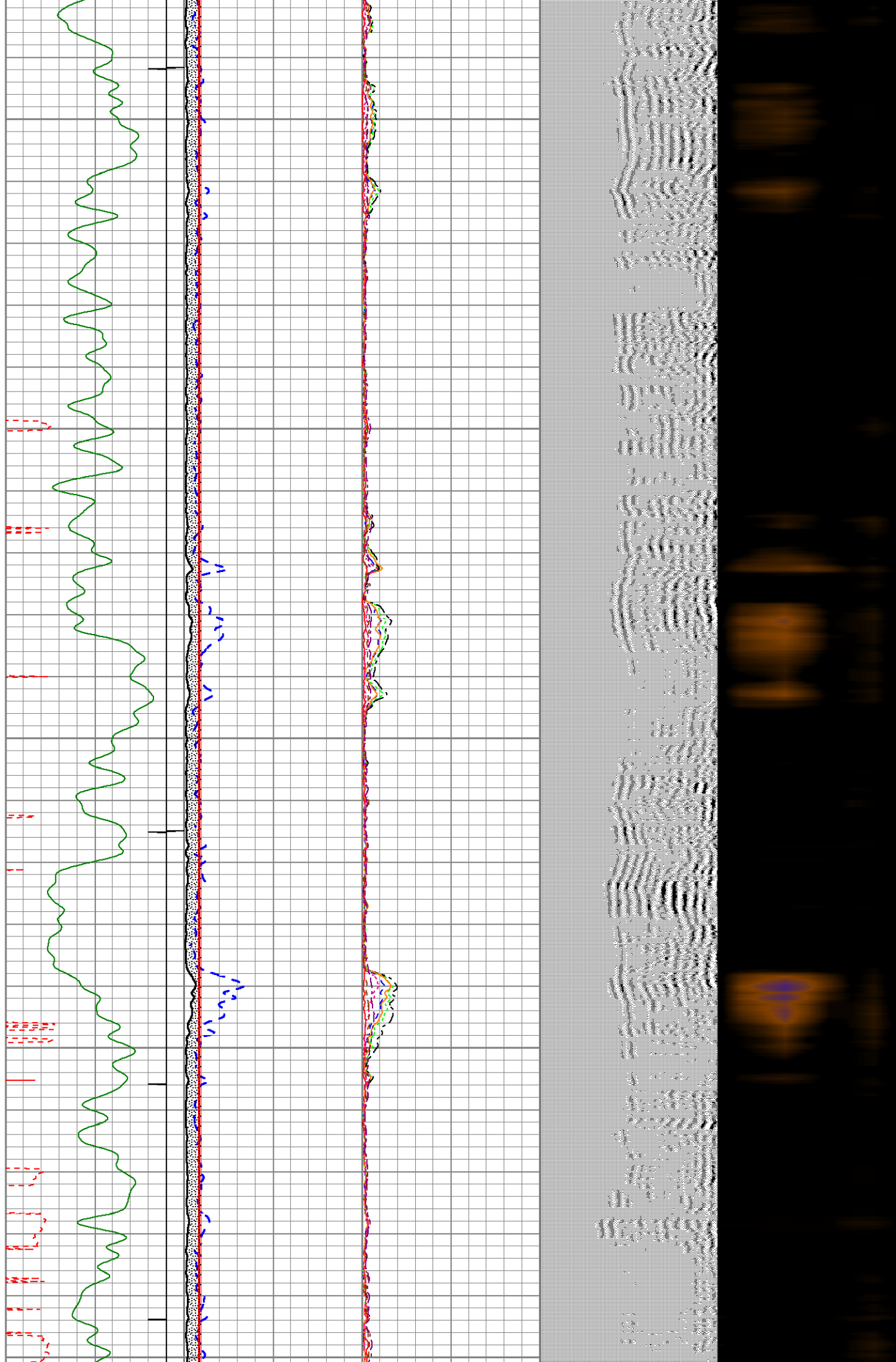
3400



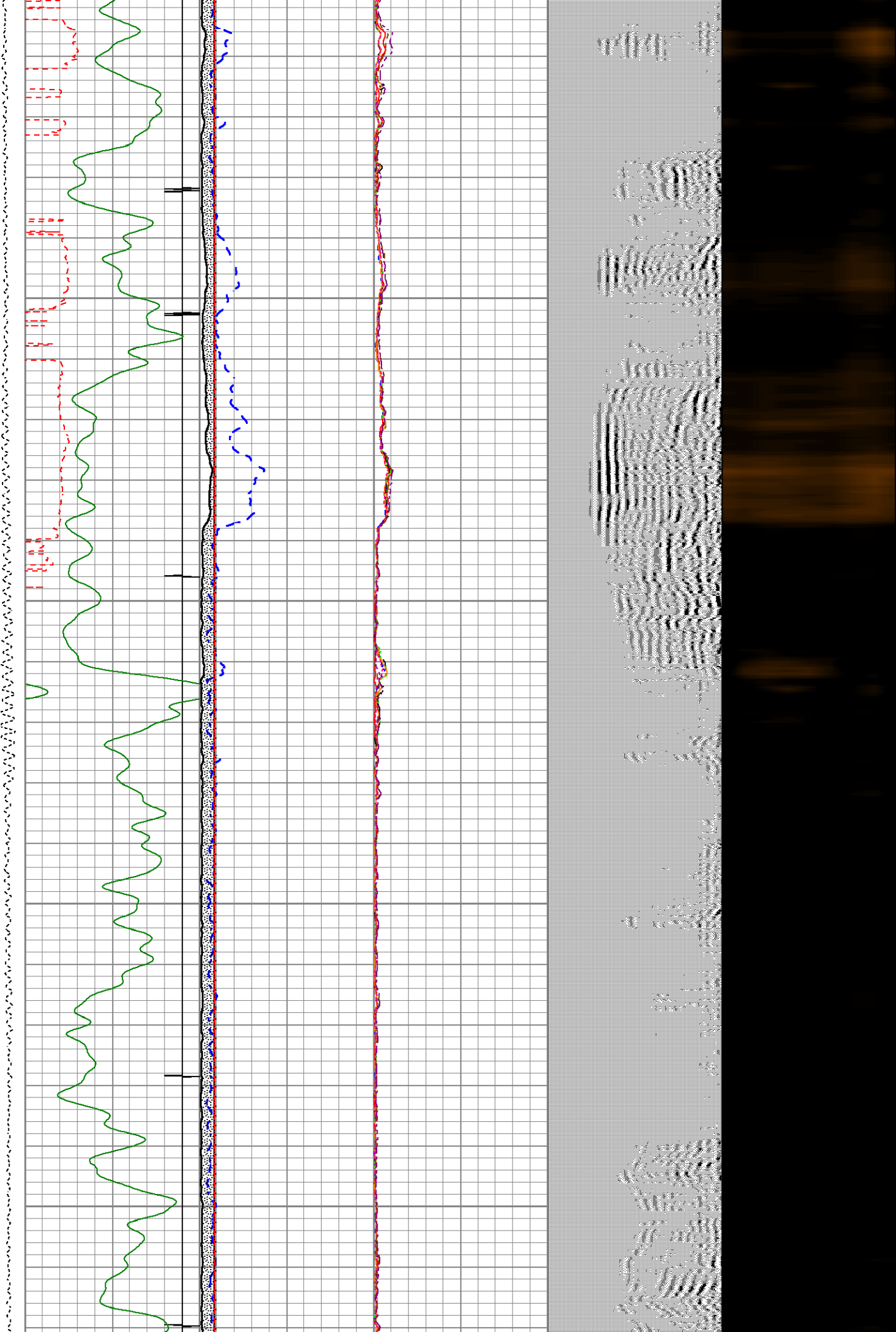
3500

3600

3700

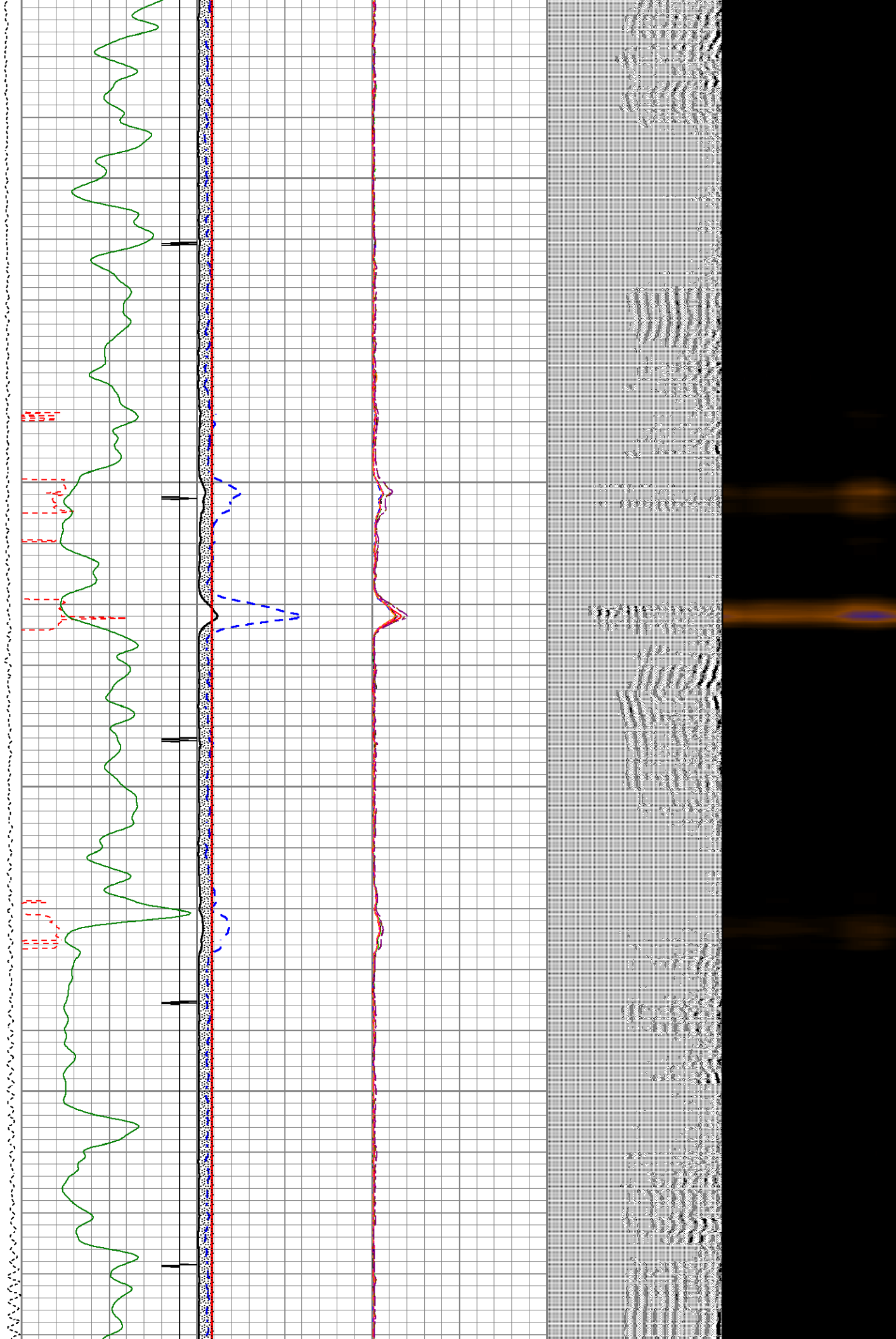


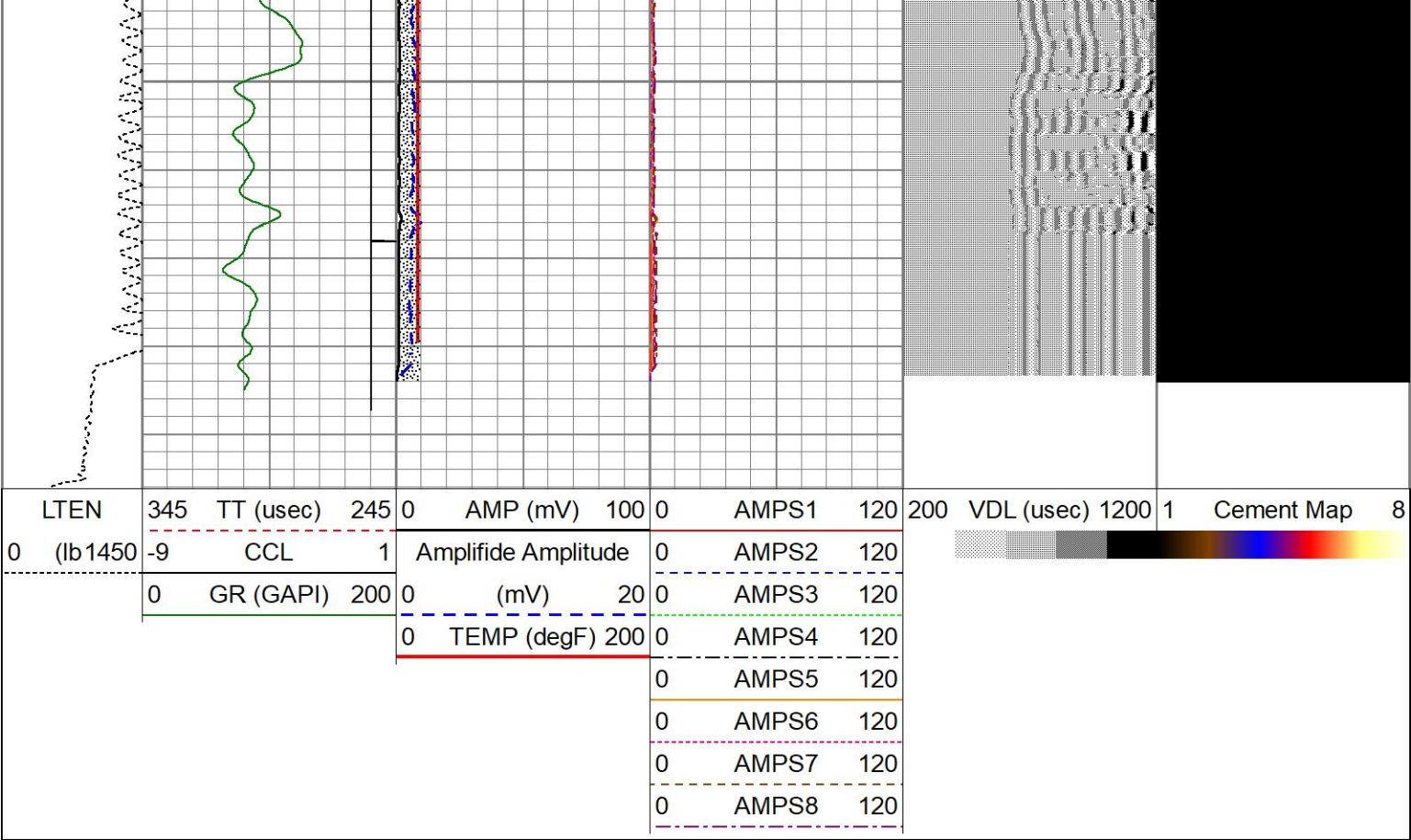
3800 3900



4000

4100





Calibration Report				
Database File	jaques 10 cnl.db			
Dataset Pathname	pass3.4			
Dataset Creation	Tue Jul 24 11:30:00 2018			
Compensated Neutron Calibration Report				
Type / Serial:		Probe_B / 090117		
Source / Verifier:		/		
Temperature:				
SHOP CALIBRATION		Fri Jan 30 17:39:55 2009		
	Cal Tube	Units		
Tank Ratio		SS/LS		
Tank Porosity		pu		
LS Detector		cps		
SS Detector		cps		
Tool Ratio		SS/LS		
Tool Porosity		pu		
Tool Constant =				
Field Verifier	SS Detector	LS Detector	Ratio	Porosity
PRE-SURVEY VERIFICATION				
	SS Detector	LS Detector	Ratio	Porosity
POST-SURVEY VERIFICATION				
	SS Detector	LS Detector	Ratio	Porosity

Serial Number:	275	
Tool Model:	Probe	
Performed:	Tue Jul 24 08:29:13 2018	
Calibrator Value:	1.0	GAPI
Background Reading:	0.0	cps
Calibrator Reading:	1.0	cps
Sensitivity:	1.0000	GAPI/cps

Segmented Cement Bond Log Calibration Report

Serial Number:	allied	
Tool Model:	Probe275T	
Calibration Casing Diameter:	5.500	in
Calibration Depth:	56.117	ft

Master Calibration, performed Tue Jul 24 09:53:32 2018:

	Raw (v)		Calibrated (mv)		Results	
	Zero	Cal	Zero	Cal	Gain	Offset
3'	0.000	0.825	0.500	71.921	86.520	0.500
CAL	0.003	0.974				
5'	0.000	0.732	0.500	71.921	97.634	0.500
SUM						
S1	0.000	0.827	0.000	100.000	120.887	-0.000
S2	0.000	0.838	0.000	100.000	119.339	-0.000
S3	-0.003	0.822	0.000	100.000	121.312	0.336
S4	-0.000	0.811	0.000	100.000	123.263	0.010
S5	-0.001	0.805	0.000	100.000	124.206	0.073
S6	-0.002	0.823	0.000	100.000	121.276	0.232
S7	0.000	0.807	0.000	100.000	123.964	-0.000
S8	0.000	0.850	0.000	100.000	117.700	-0.000

Internal Reference Calibration, performed Tue Jun 19 13:25:20 2012:

	Raw (v)		Calibrated (v)		Results	
	Zero	Cal	Zero	Cal	Gain	Offset
CAL	0.000	0.000	0.003	0.974	1.000	0.000

Air Zero Calibration, performed Thu Oct 19 09:04:41 2017:

	Raw (v)		Calibrated (v)		Results	
	Zero		Zero		Offset	
3'	0.000		0.000		0.000	
5'	0.000		0.000		0.000	
SUM						
S1	0.000		0.000		0.000	
S2	0.000		0.000		0.000	
S3	0.000		0.000		0.000	
S4	0.000		0.000		0.000	
S5	0.000		0.000		0.000	
S6	0.000		0.000		0.000	
S7	0.000		0.000		0.000	
S8	0.000		0.000		0.000	