



COMPENSATED NEUTRON LOG
GAMMA RAY / CCL

Company CATAMOUNT
Well JAQUES 10
Field IGNACIO
County LA PLATA State NM

Location: 759' FSL & 1947 FWL
API # : 05-067-10020
Other Services
Permanent Datum GROUND LEVEL Elevation 6728
Log Measured From KB 11
Drilling Measured From KELLY BUSHING
Elevation
K.B. 6717
D.F. 6718
G.L. 6728

Company CATAMOUNT
Well JAQUES 10
Field IGNACIO
County LA PLATA
State NM

Date Run Number 7-24-18

Depth Driller 4253
Depth Logger 4180
Bottom Logged Interval 4180
Top Log Interval SURFACE
Open Hole Size N/A
Type Fluid WATER
Density / Viscosity 8.4
Max. Recorded Temp. N/A
Estimated Cement Top SEE LOG
Time Well Ready 8:00AM
Time Logger on Bottom 12:00
Equipment Number 110
Location FARMINGTON
Recorded By SWEAT
Witnessed By MARK WOLFE

Borehole Record				Tubing Record			
Run Number	Bit	From	To	Size	Weight	From	To

Casing Record	Size	Wgt/Ft	Top	Bottom
Surface String				
Prot. String				
Production String				
Liner				

<<< Fold Here >>>

All interpretations are opinions based on inferences from electrical or other measurements and we cannot and do not guarantee the accuracy or correctness of any interpretation, and we shall not, except in the case of gross or willful negligence on our part, be liable or responsible for any loss, costs, damages, or expenses incurred or sustained by anyone resulting from any interpretation made by any of our officers, agents or employees. These interpretations are also subject to our general terms and conditions set out in our current Price Schedule.

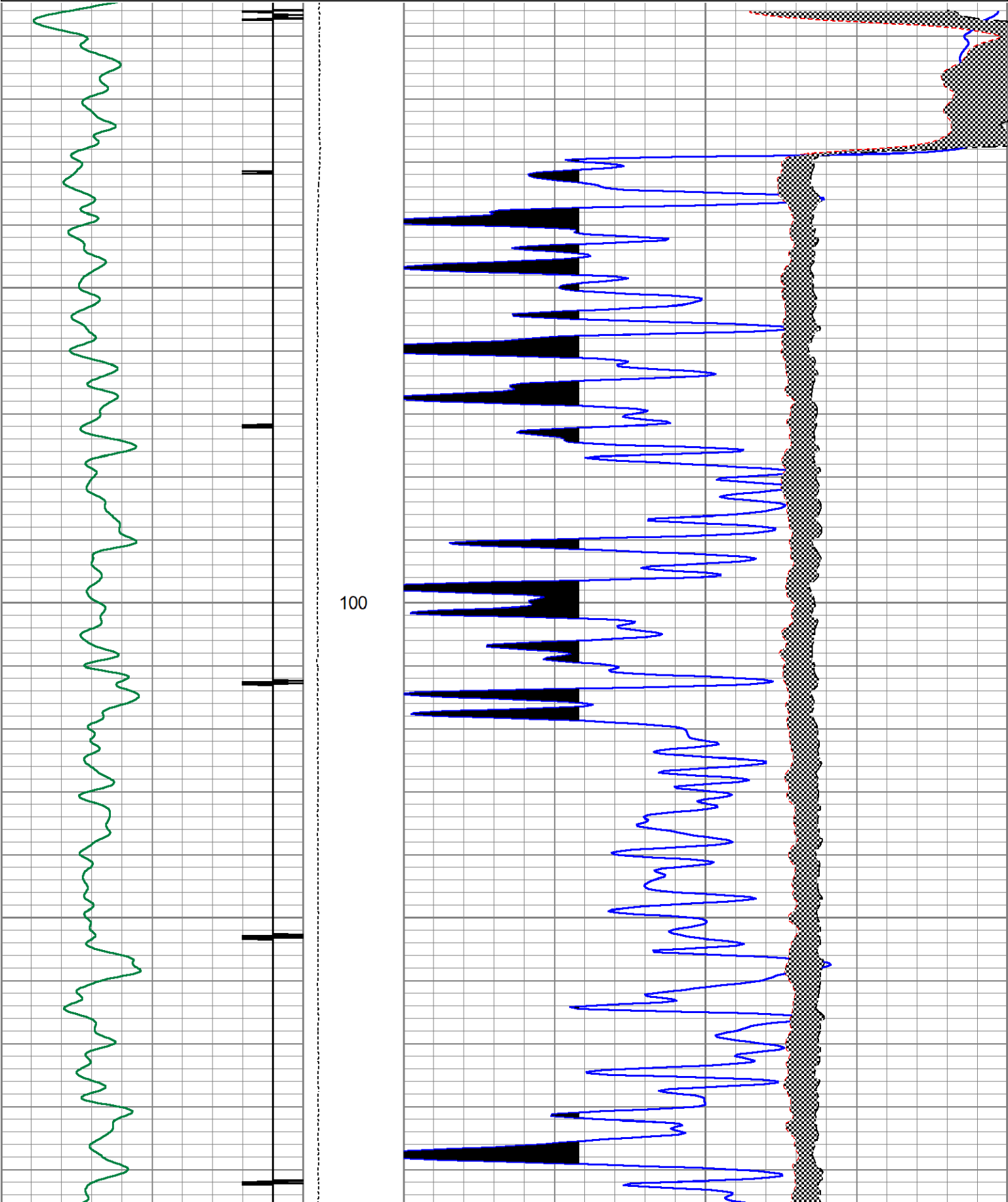
Comments

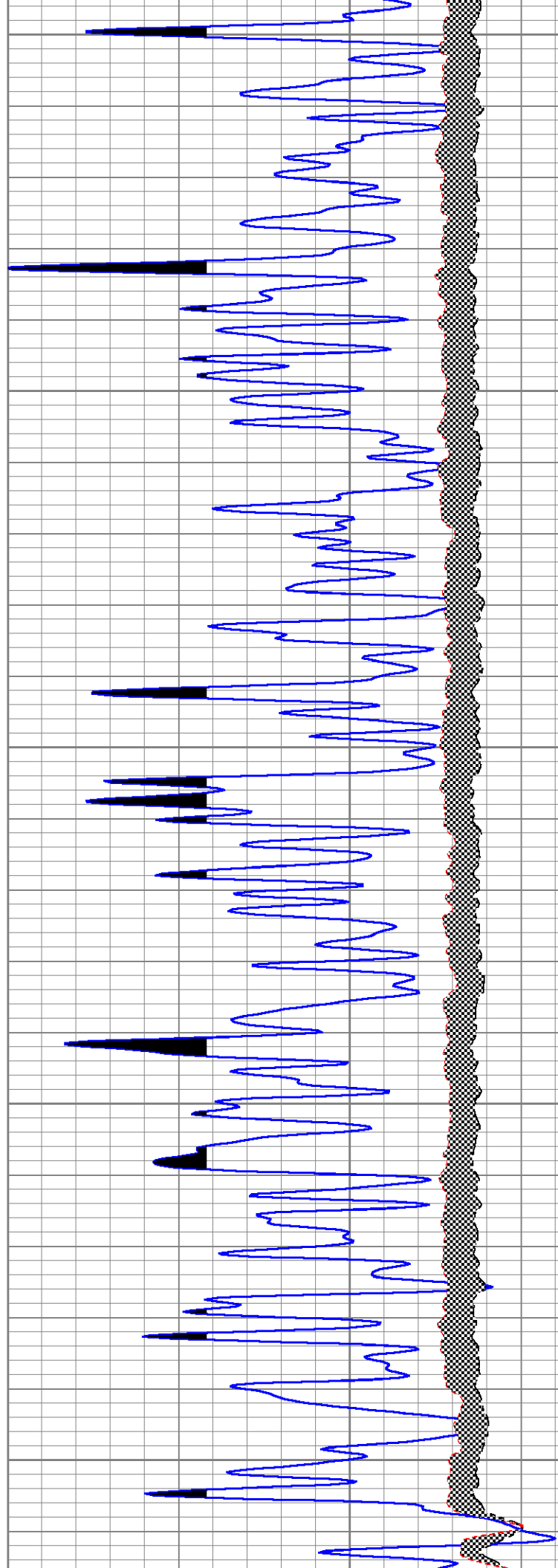
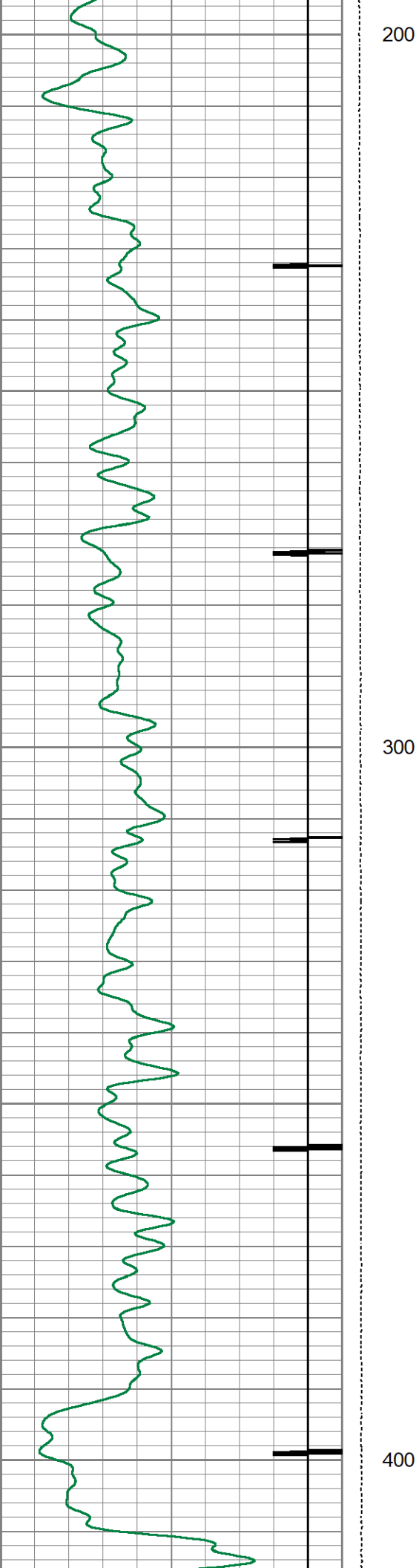
THANK YOU FOR USING BASIN WELL LOGGING

Sensor	Offset (ft)	Schematic	Description	Length (ft)	O.D. (in)	Weight (lb)
			CENT-PTS275	2.83	2.75	

[illegible]

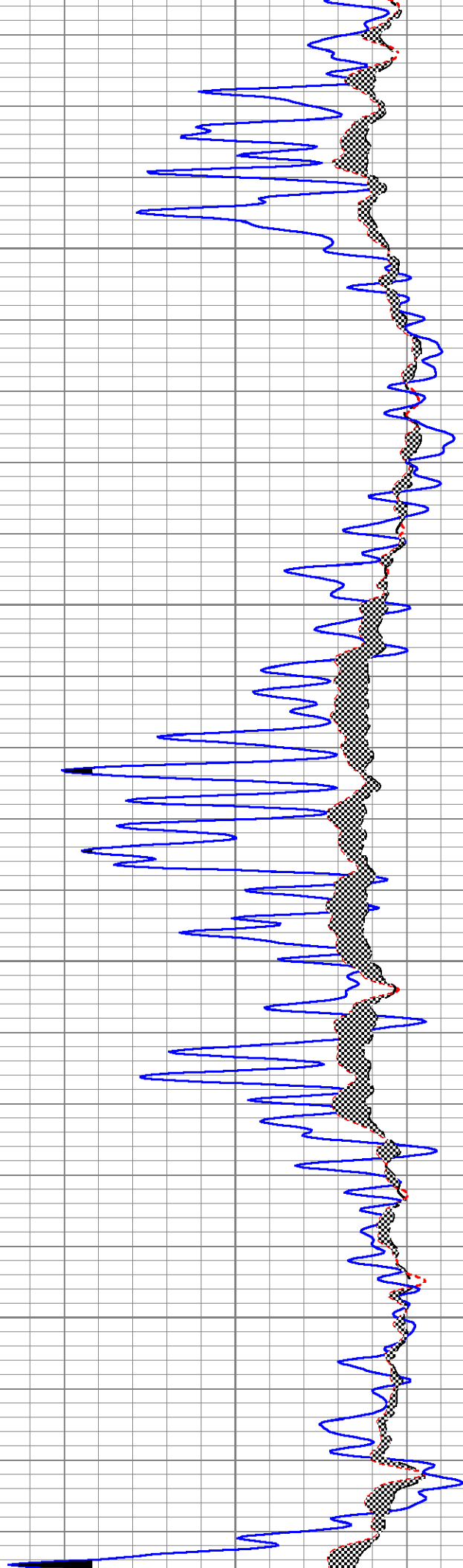
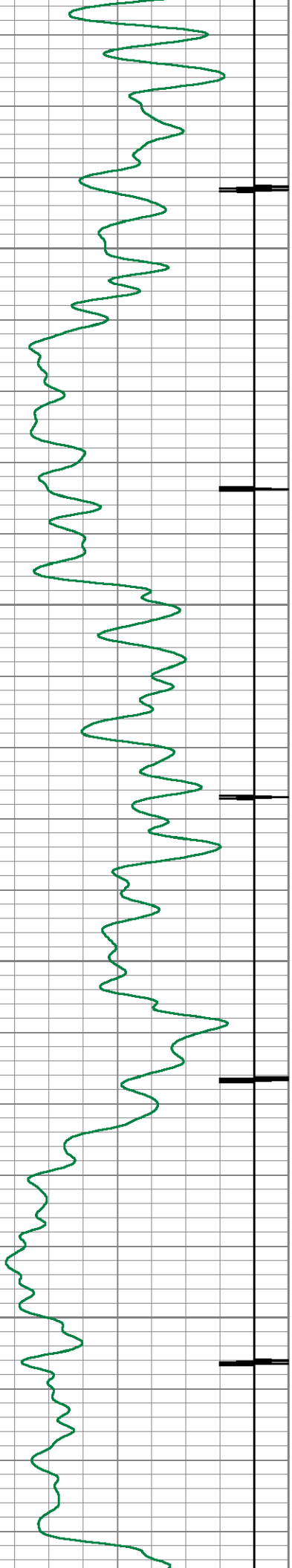
0	GR (GAPI)	200	LTEN	60	NEUTRON POROSITY (pu)	0
-9	CCL	1	0	(lb/2000)	NEURTON LONG SPACE	
					-480 (cps)	1100
					NEUTRON SHORT SPACE	
					-275 (cps)	3700

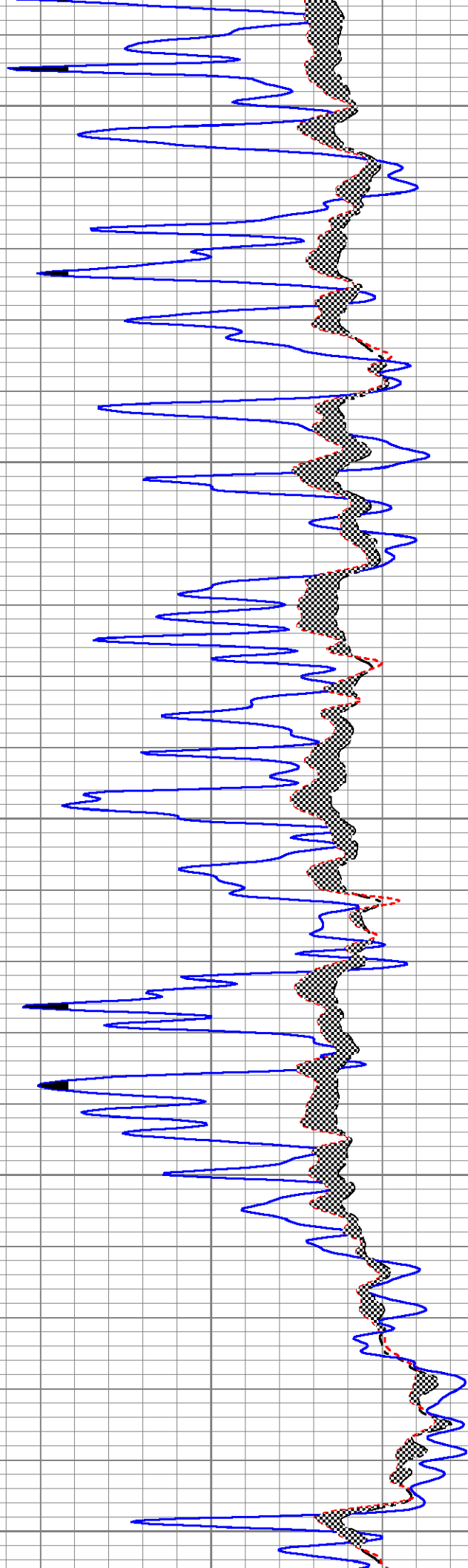
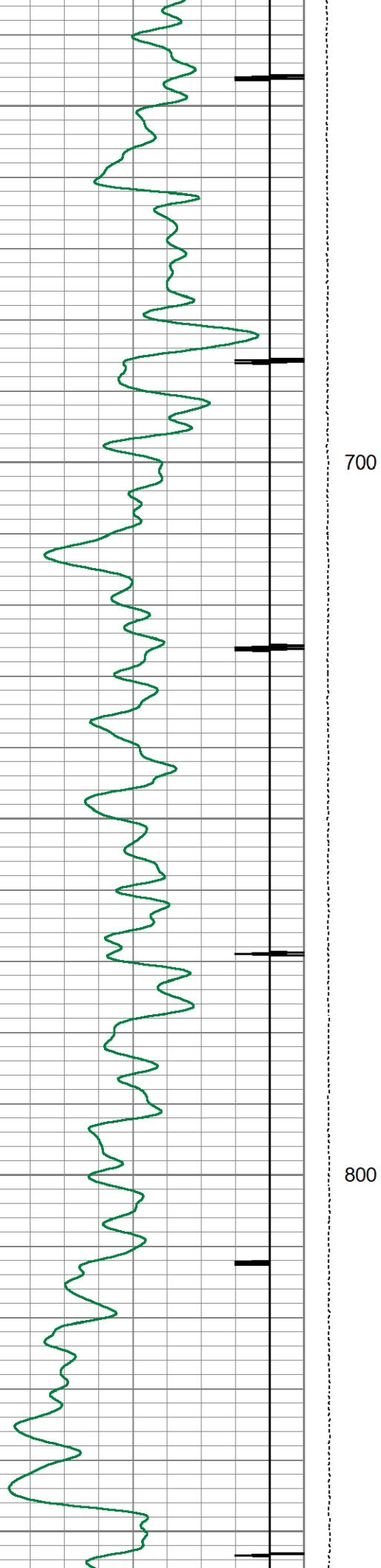


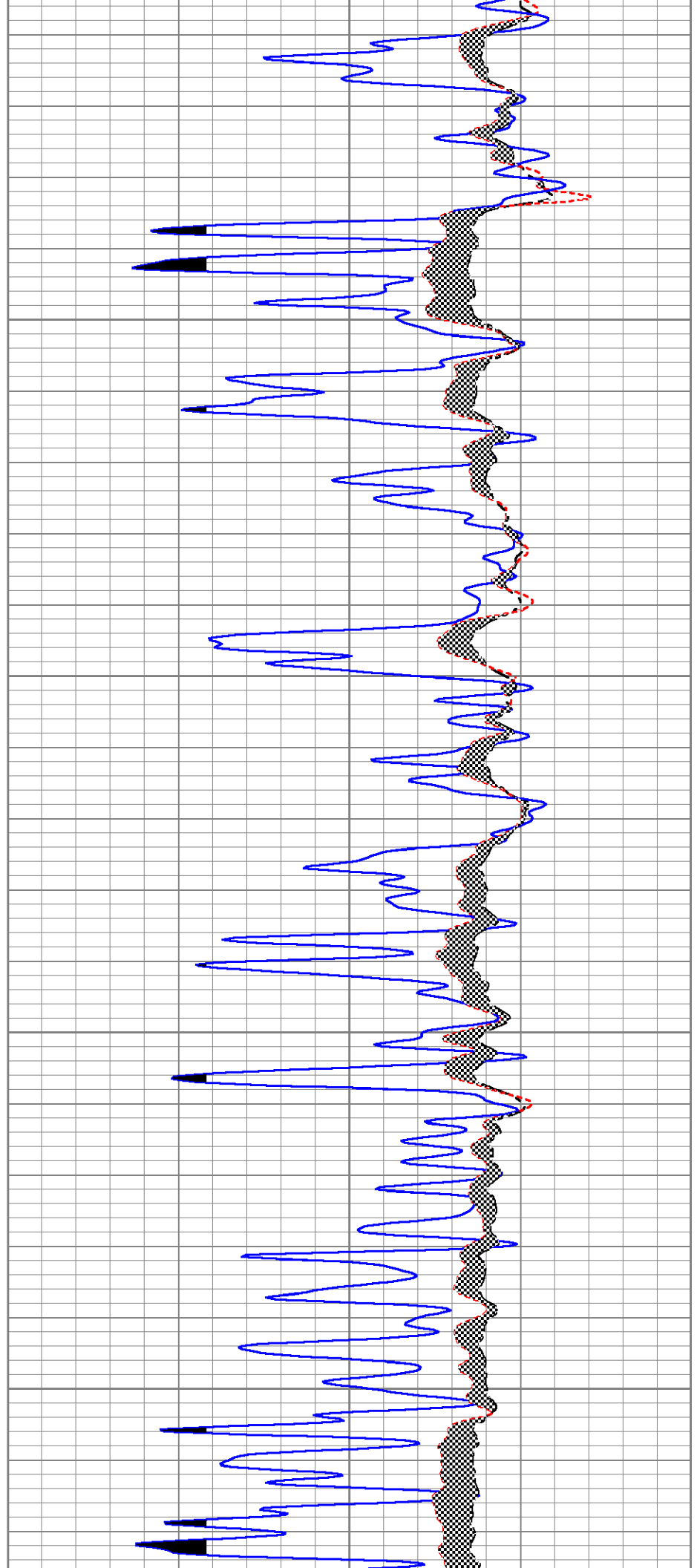
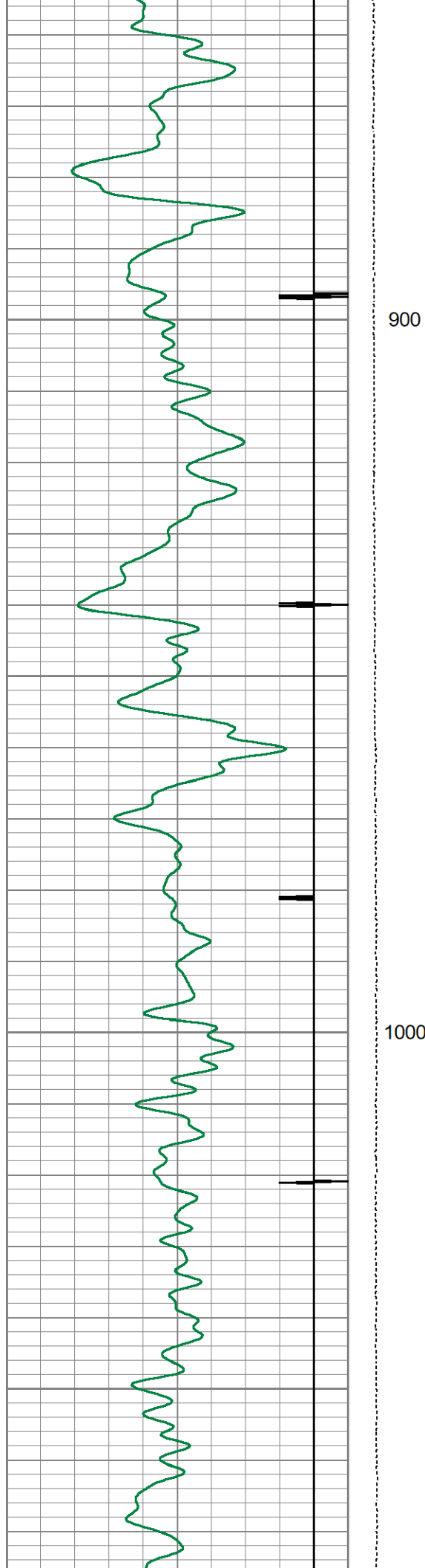


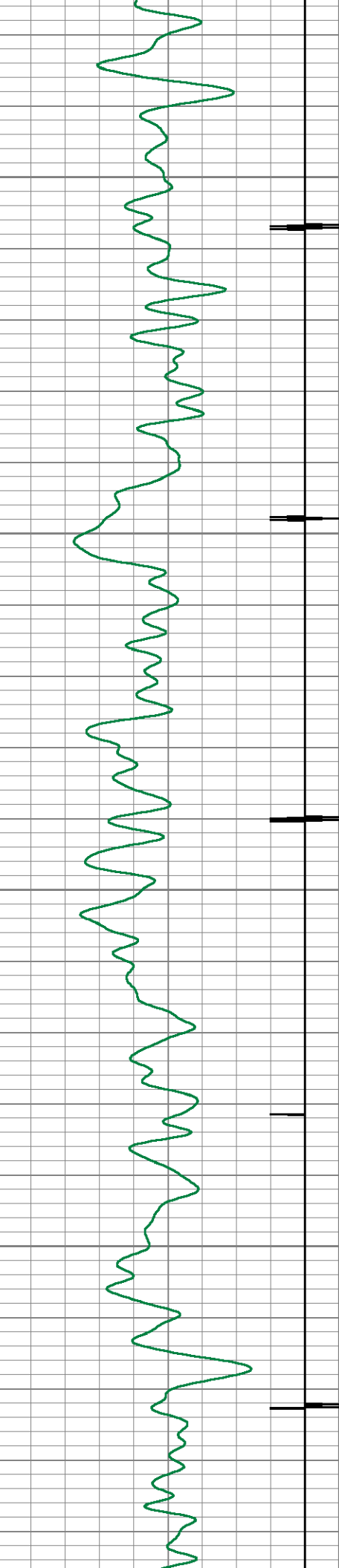
500

600



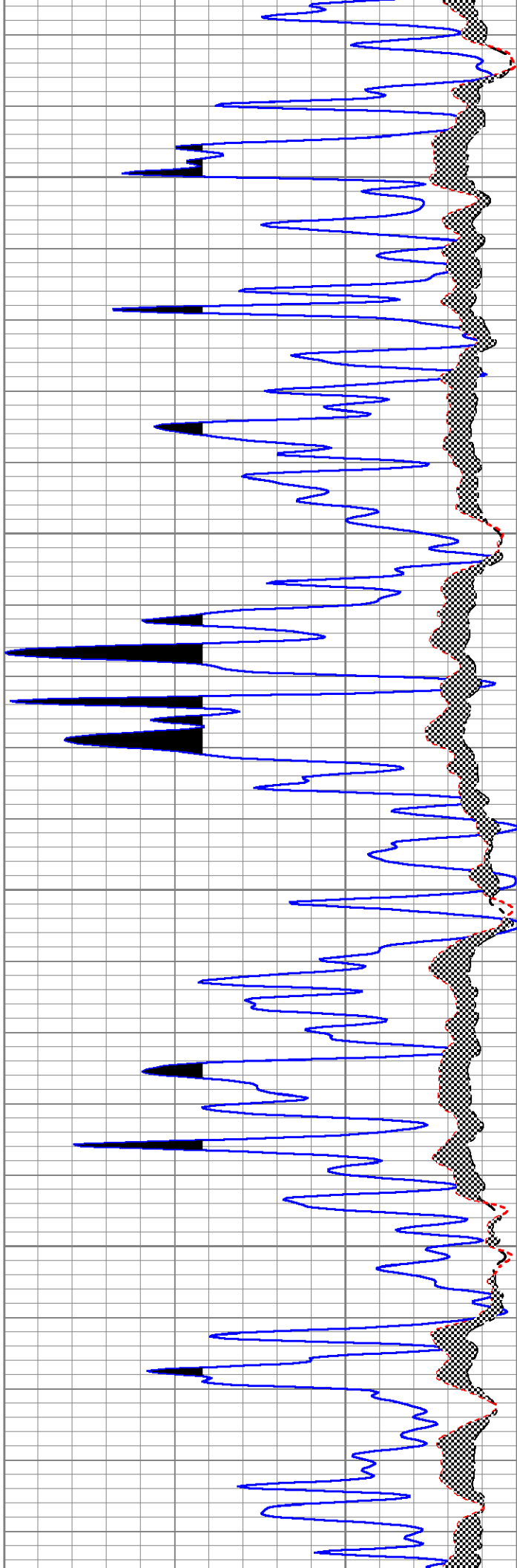


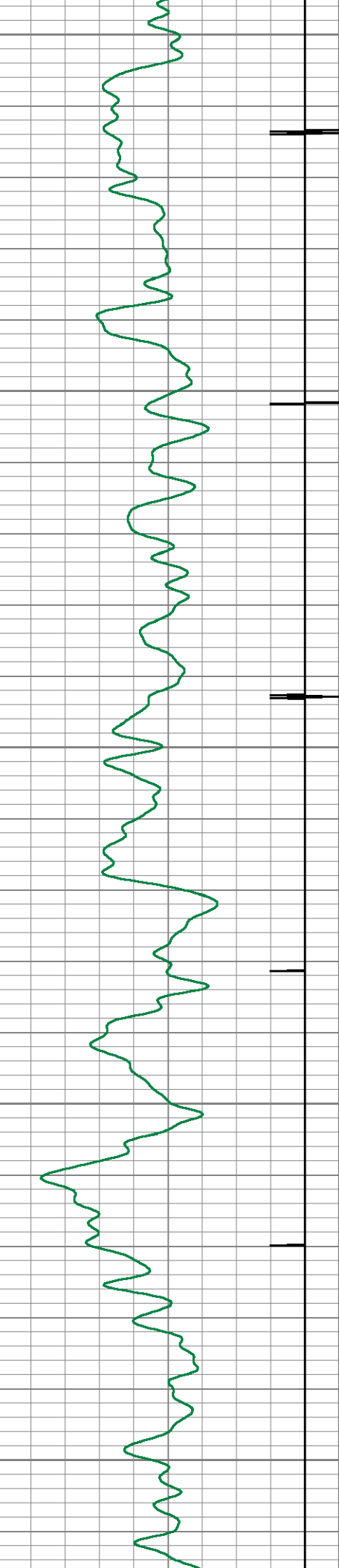




1100

1200

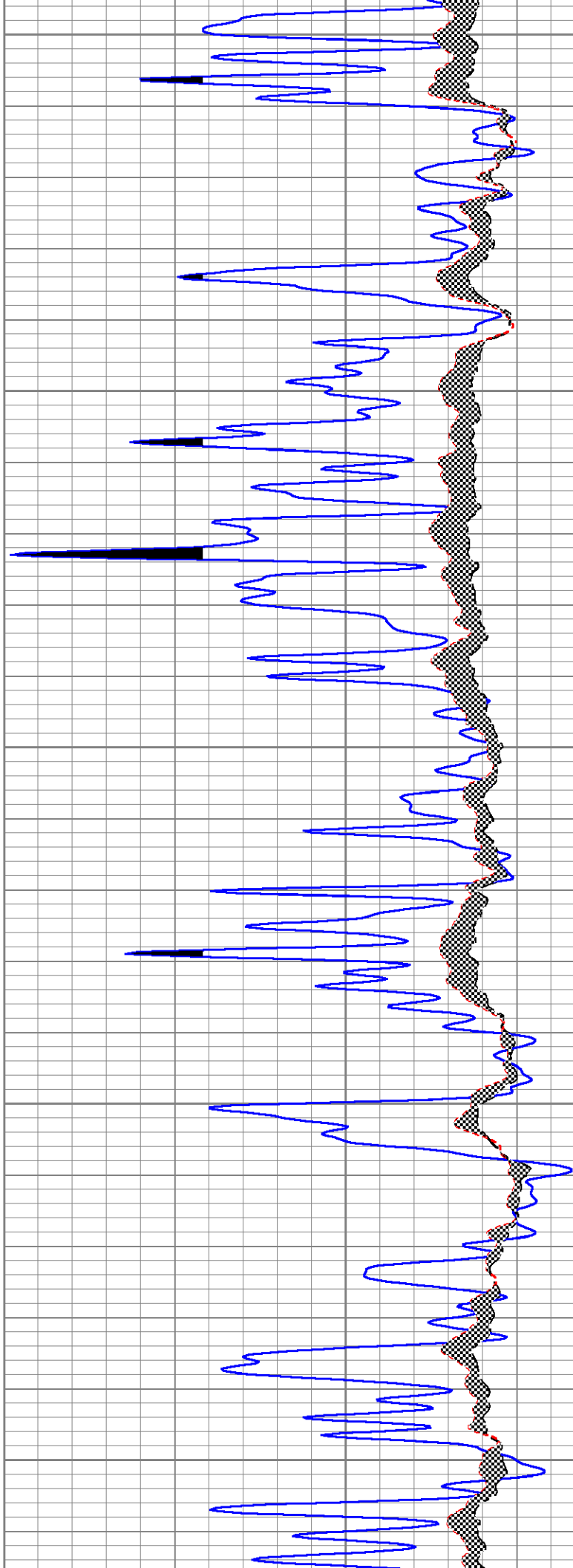


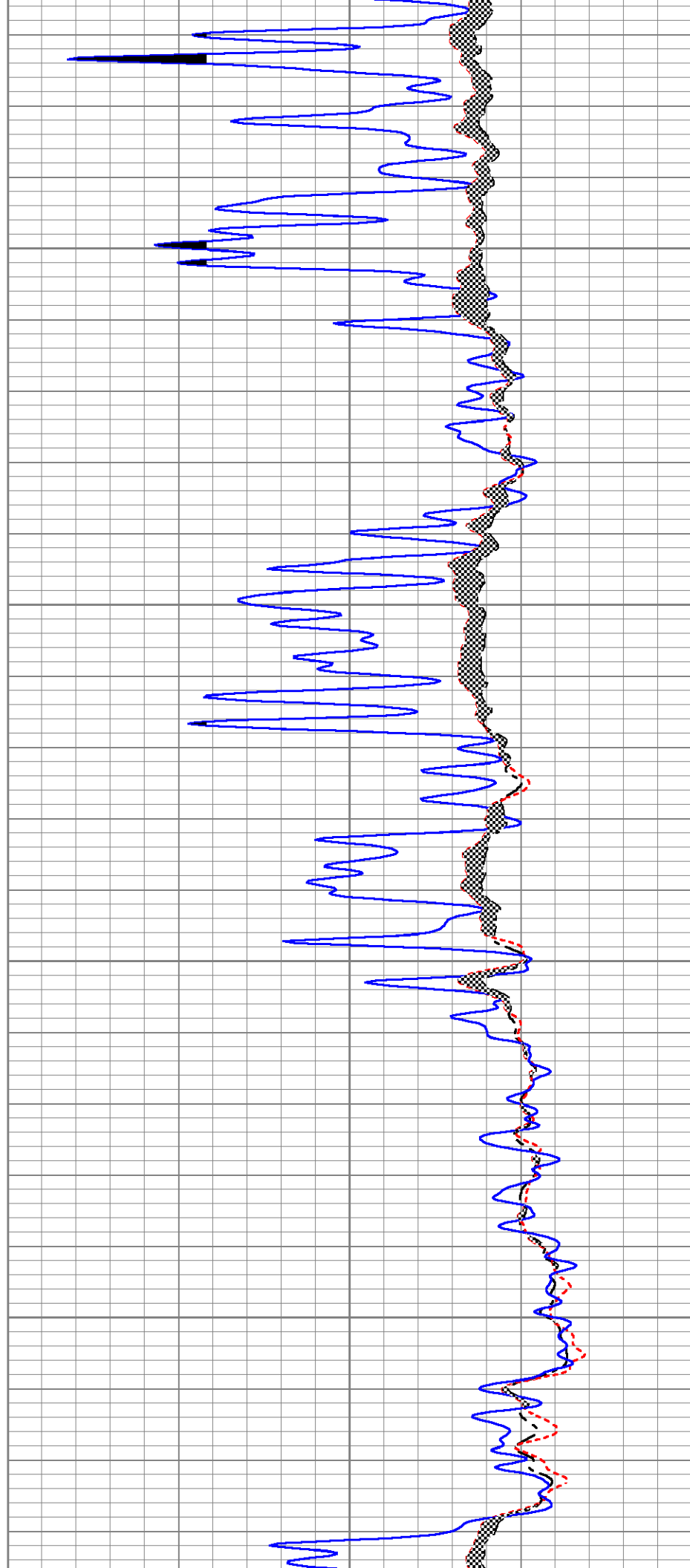
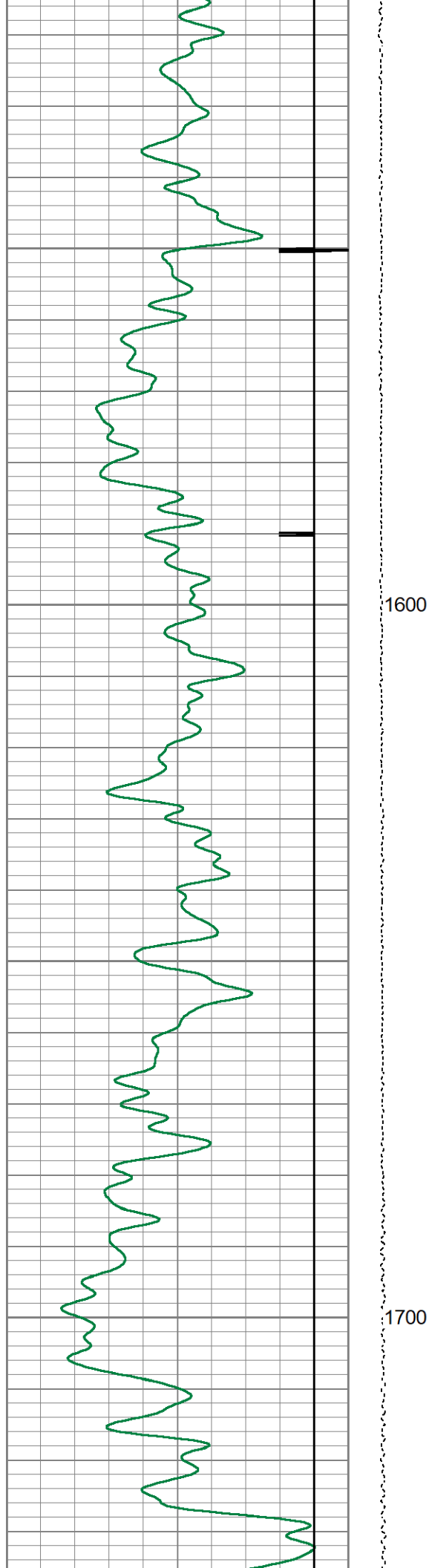


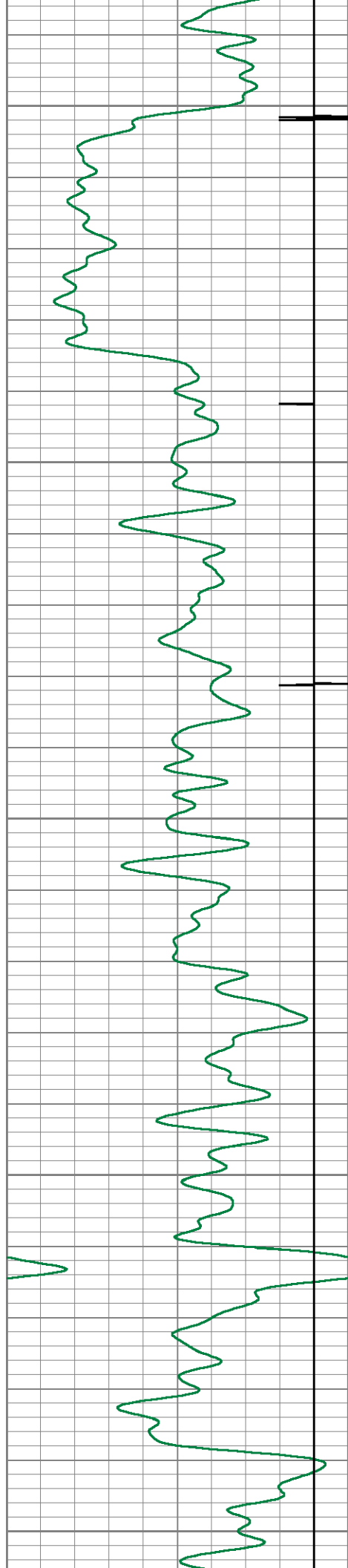
1300

1400

1500

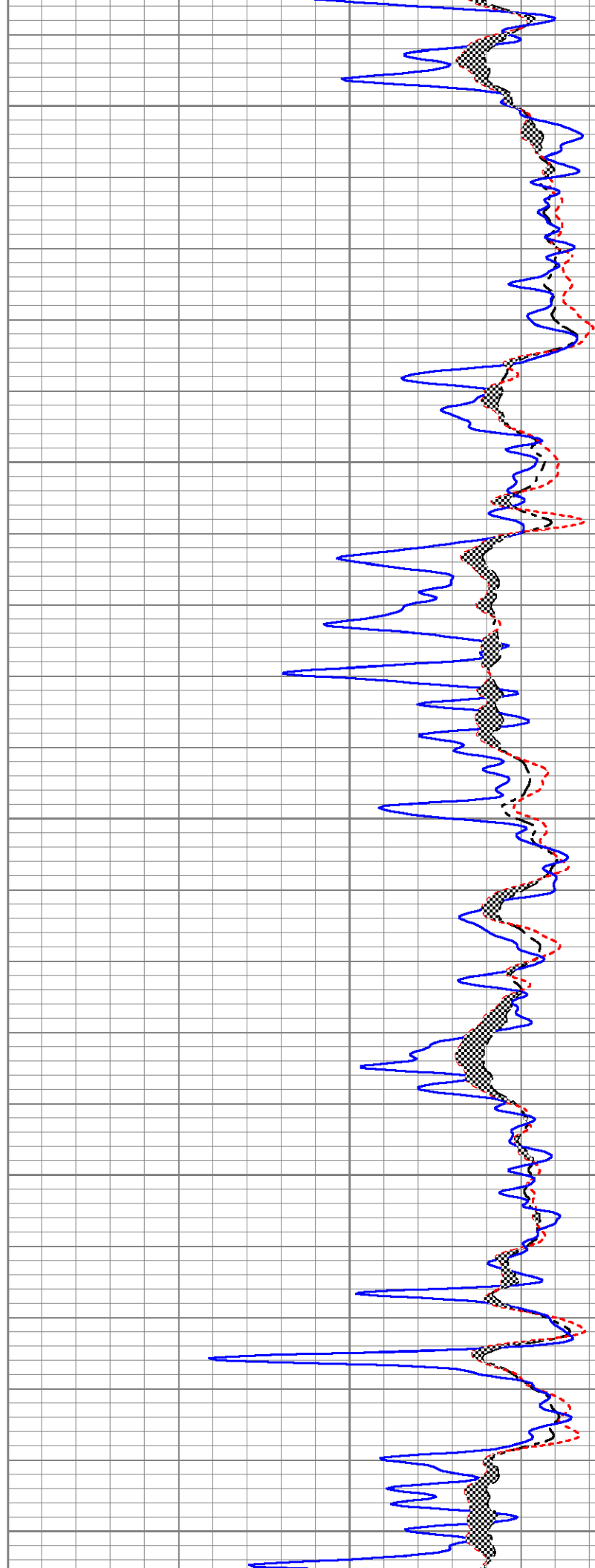


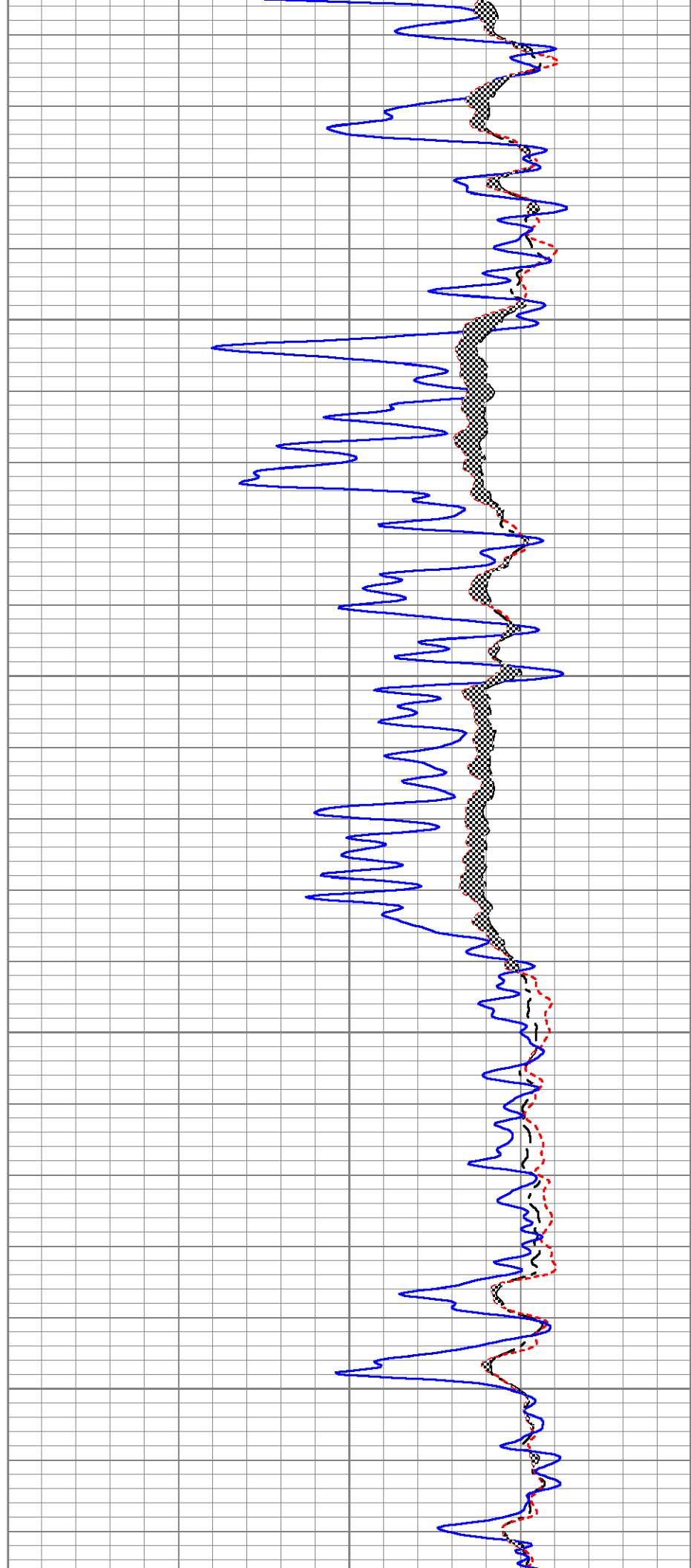
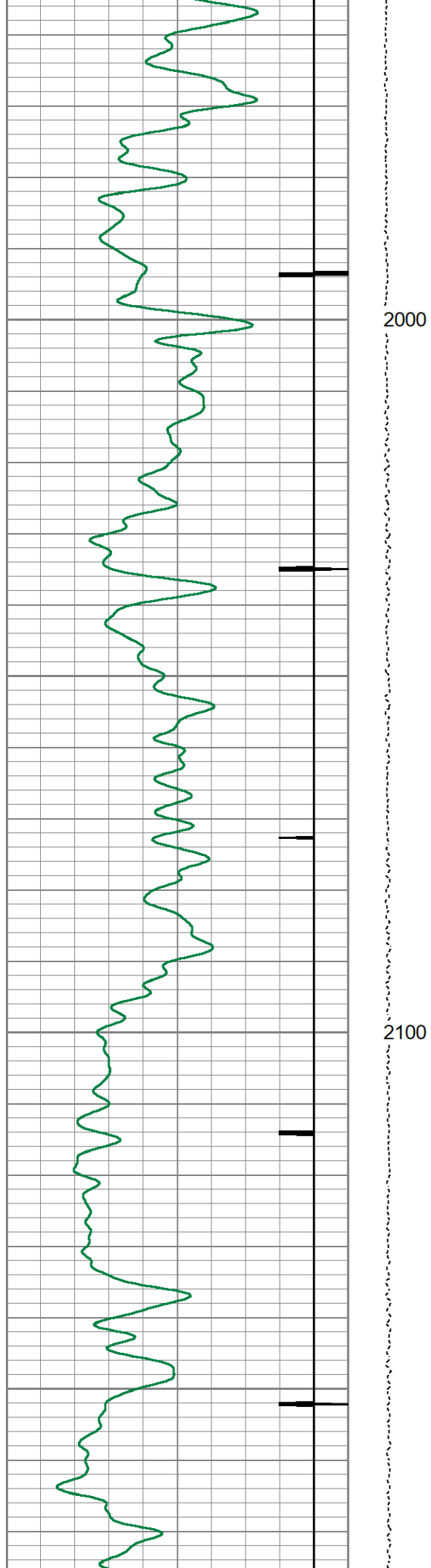


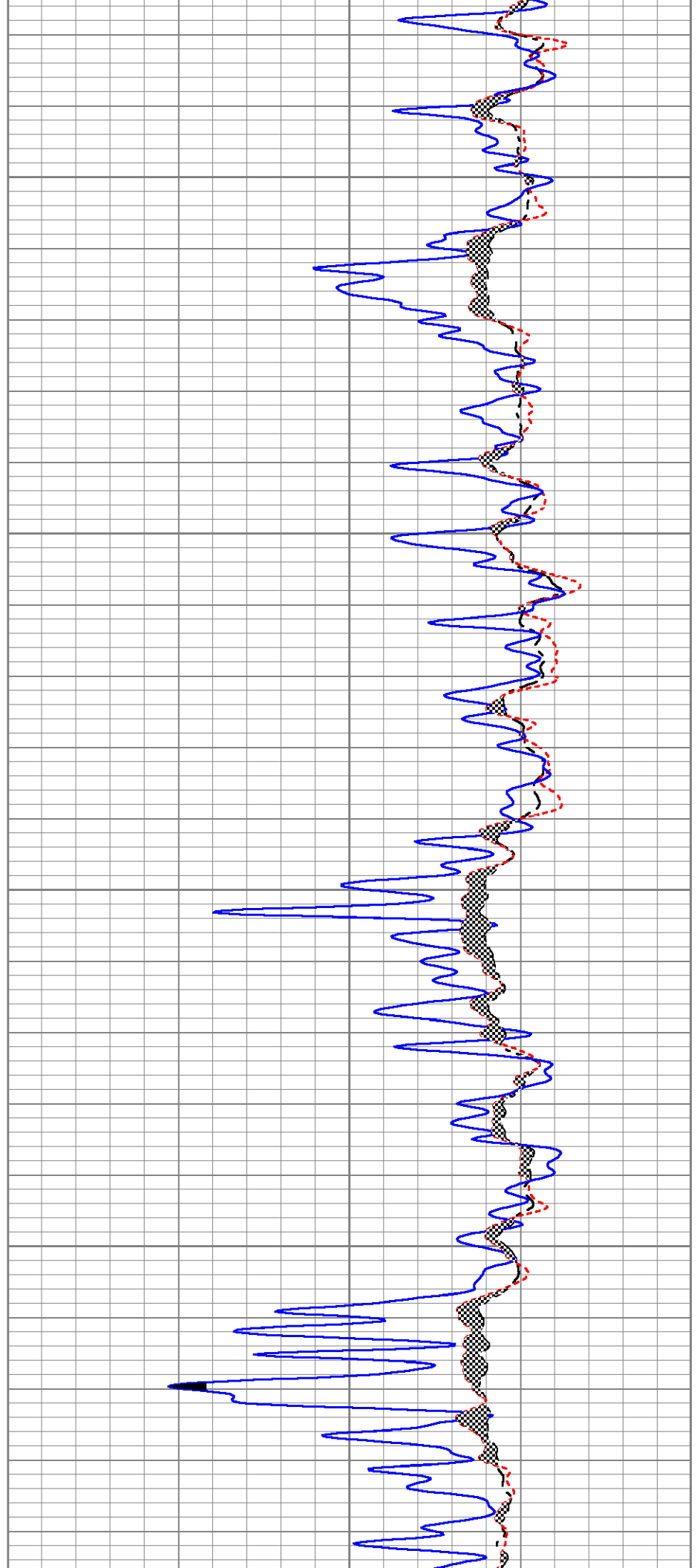
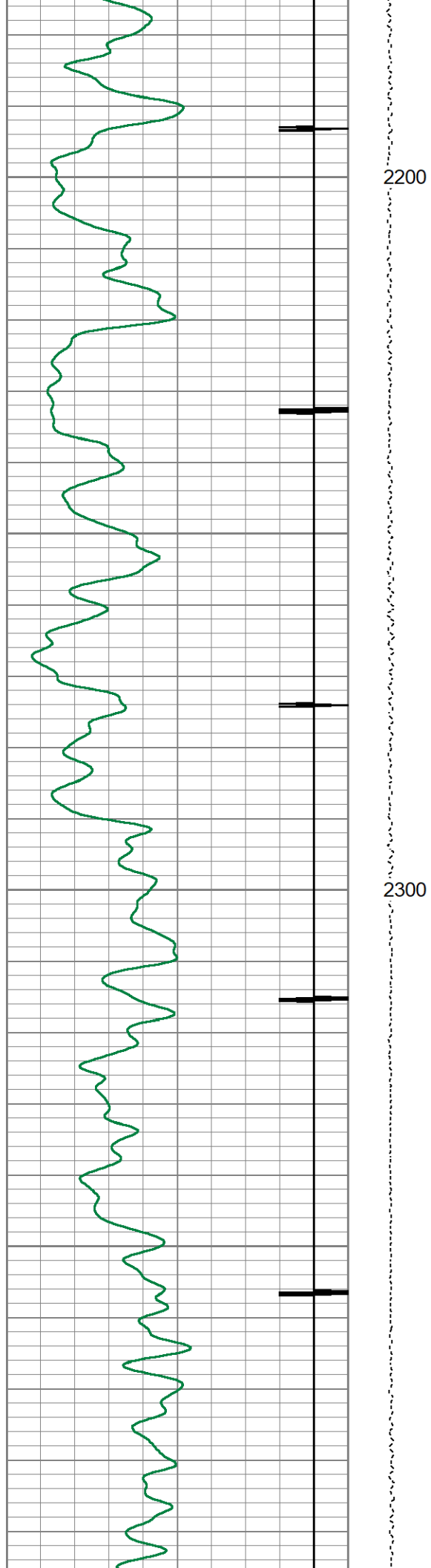


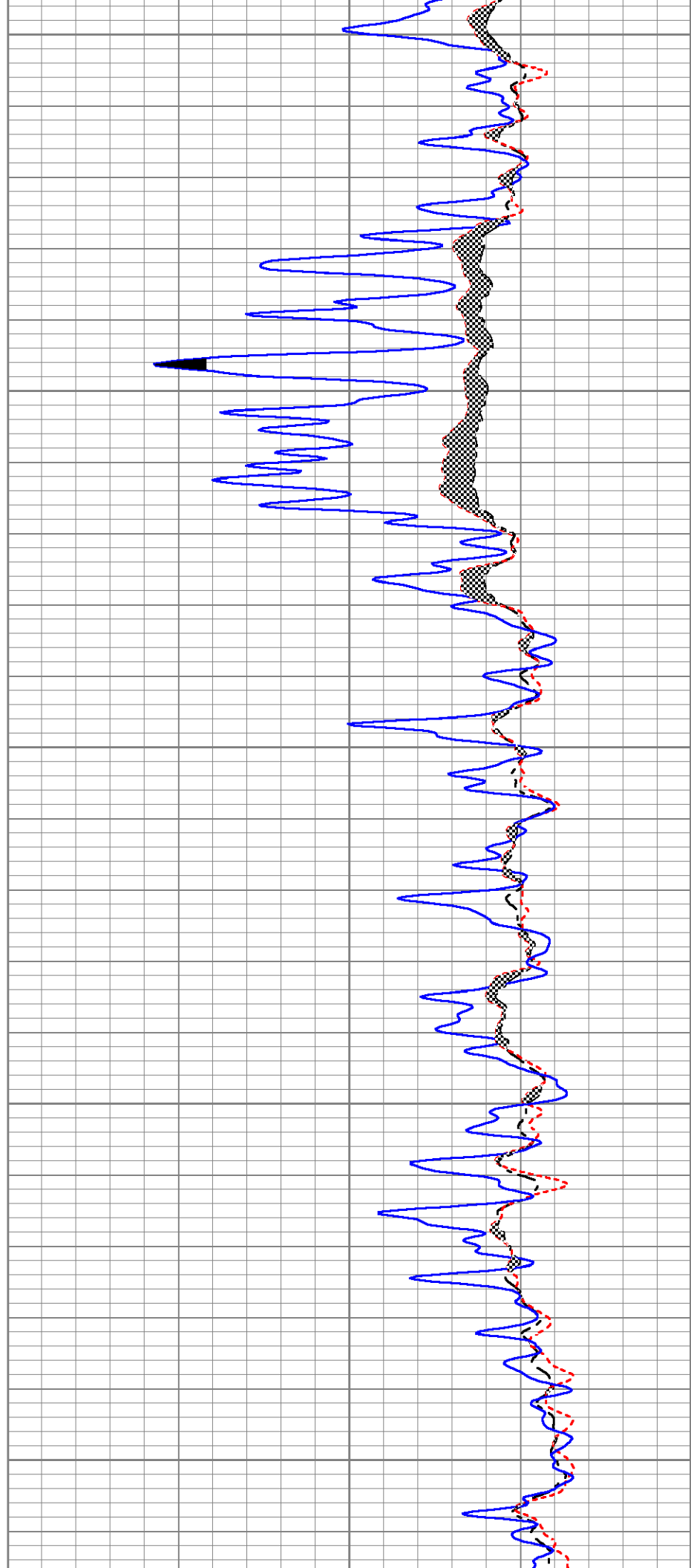
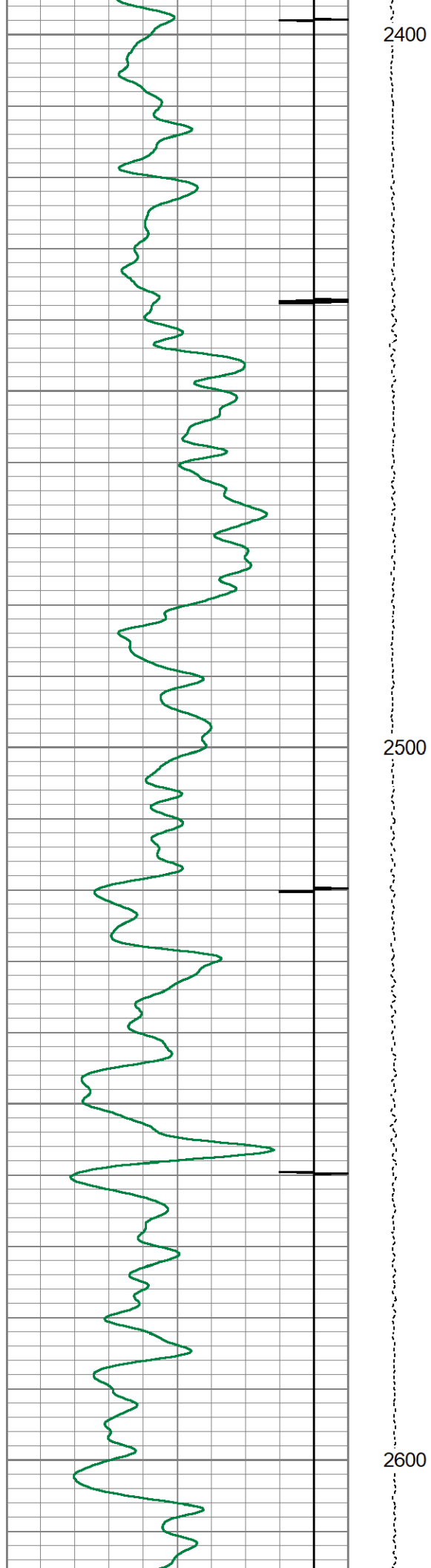
1800

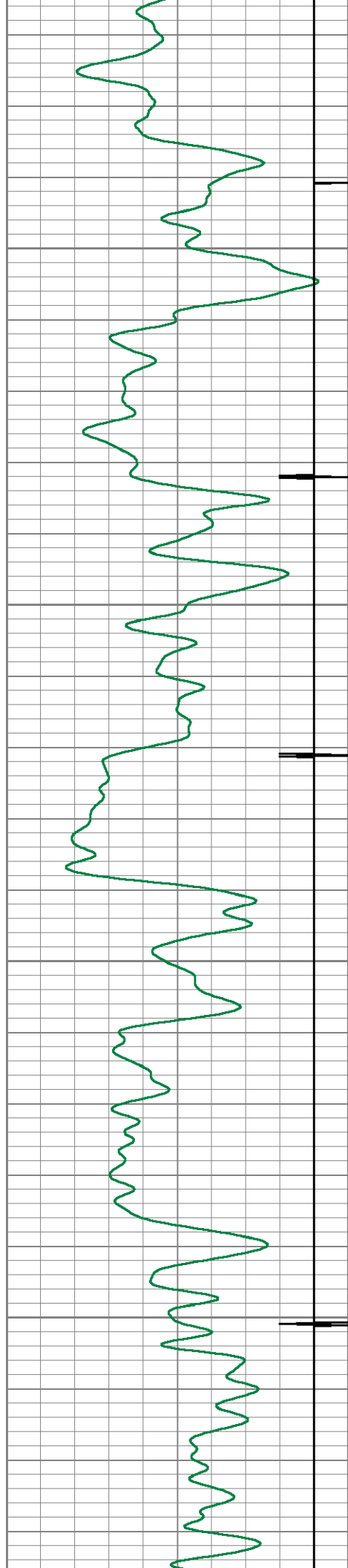
1900





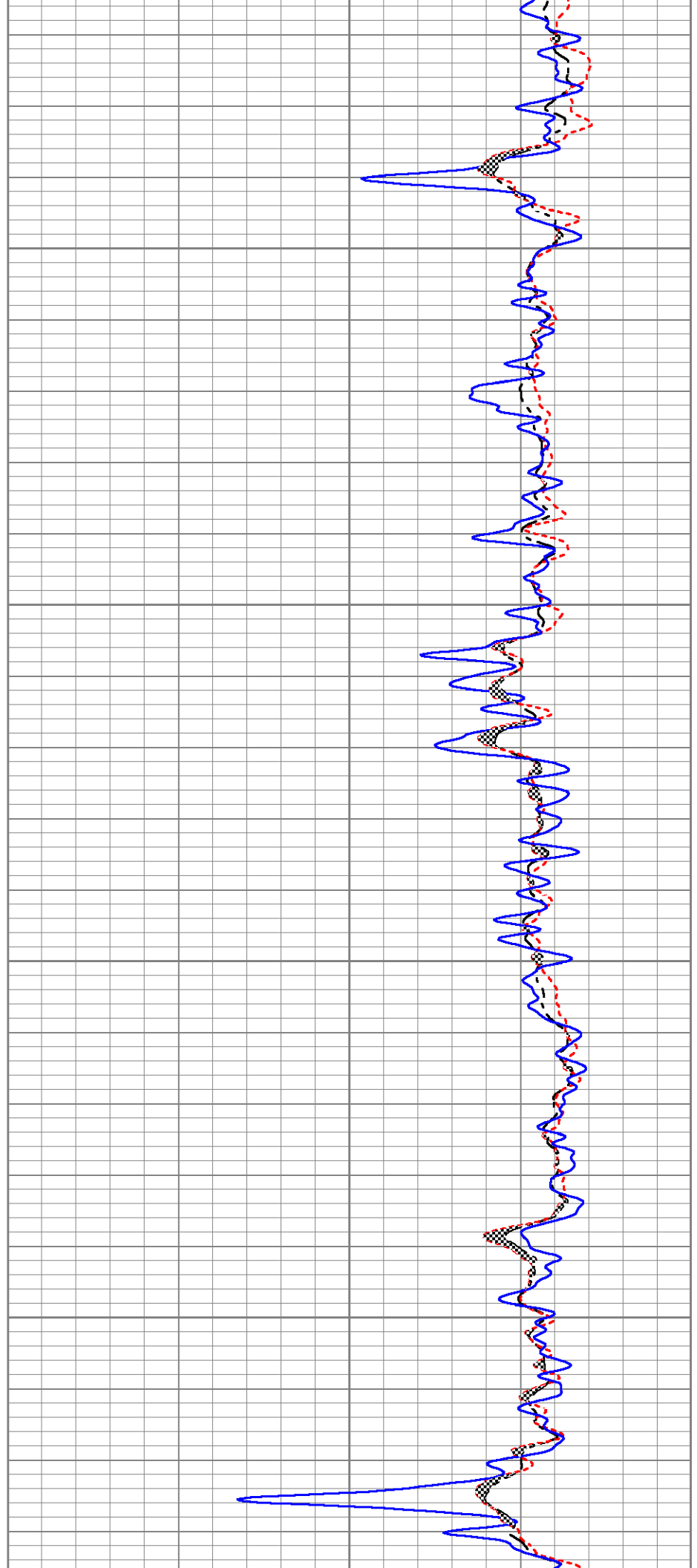


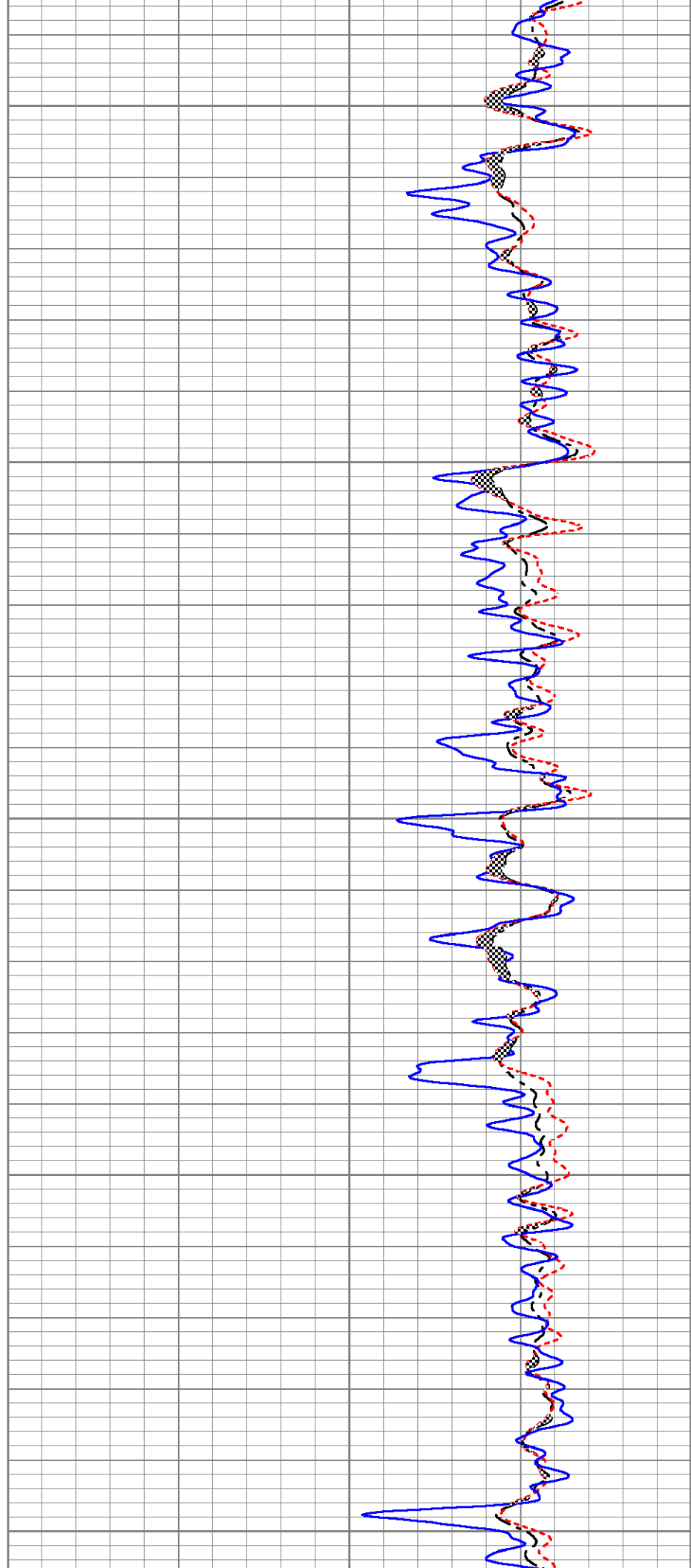
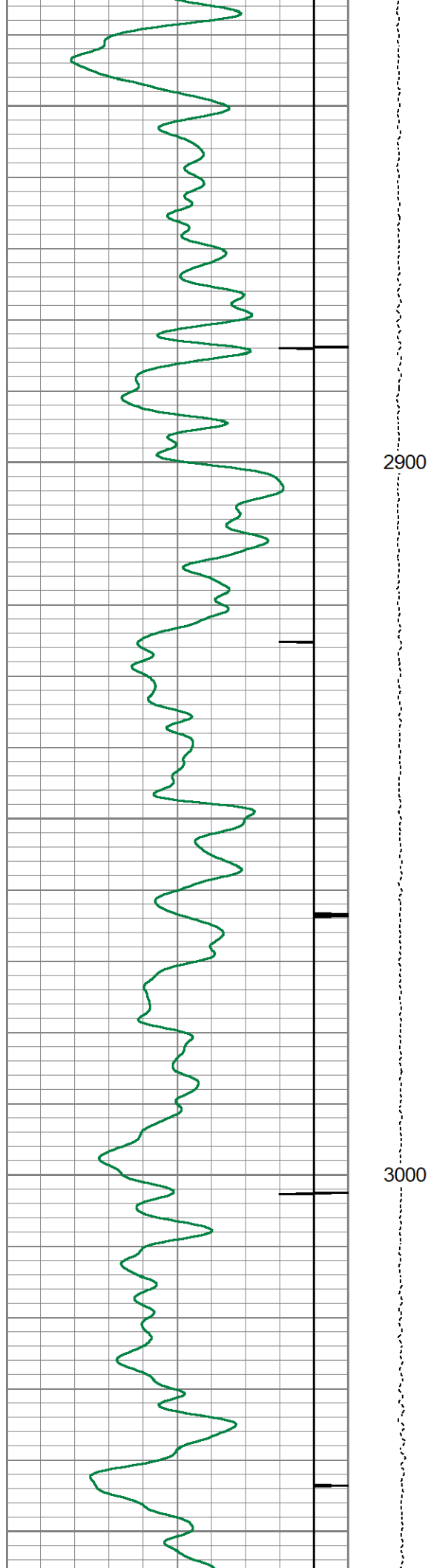


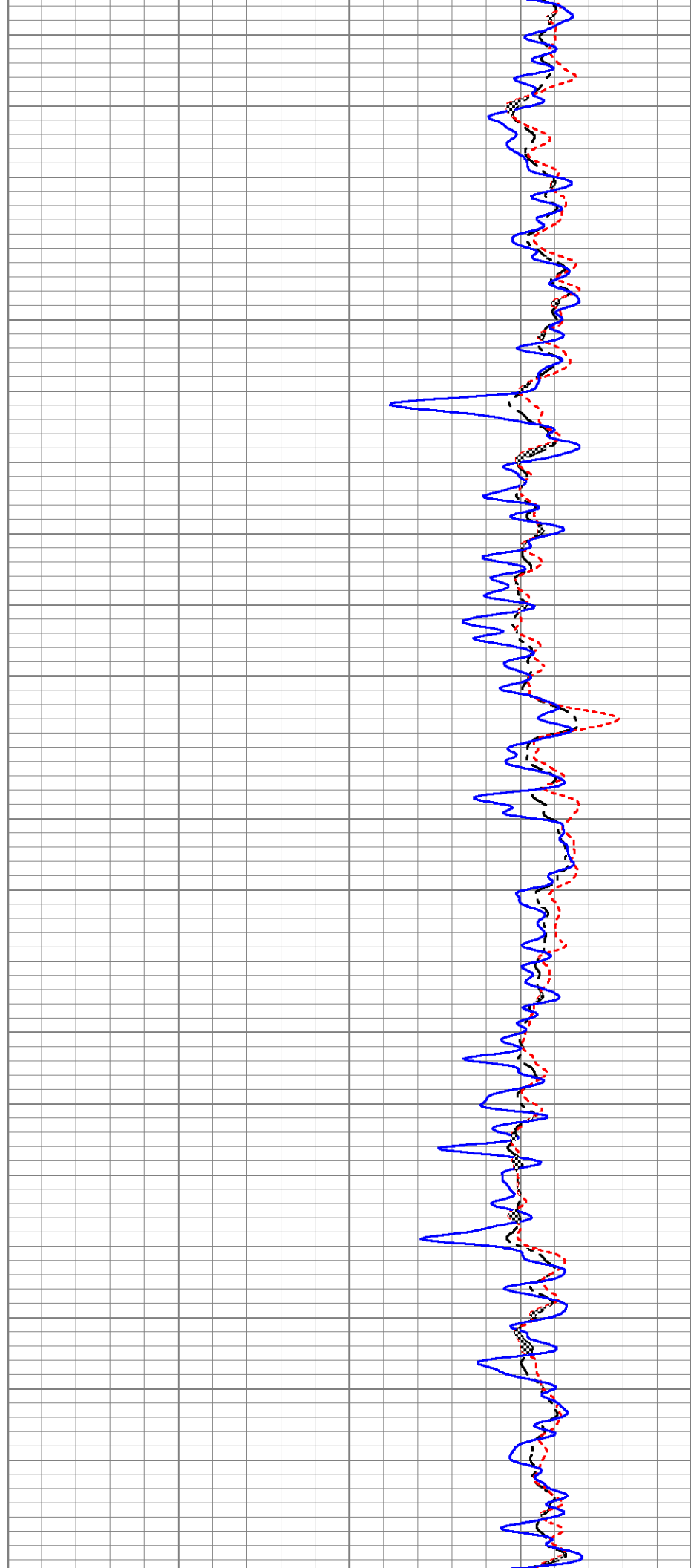
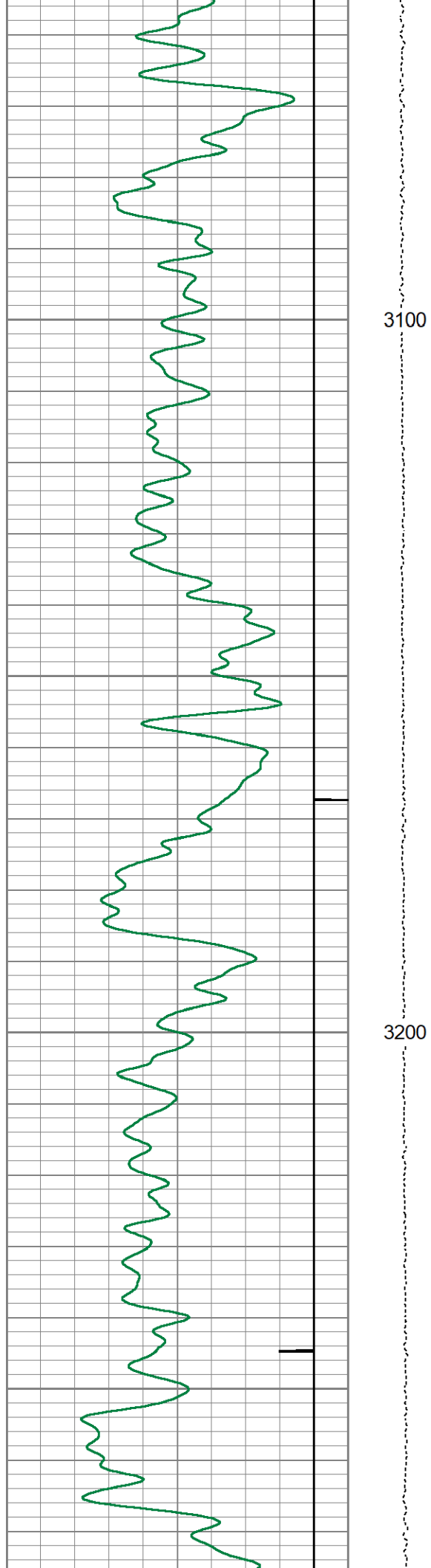


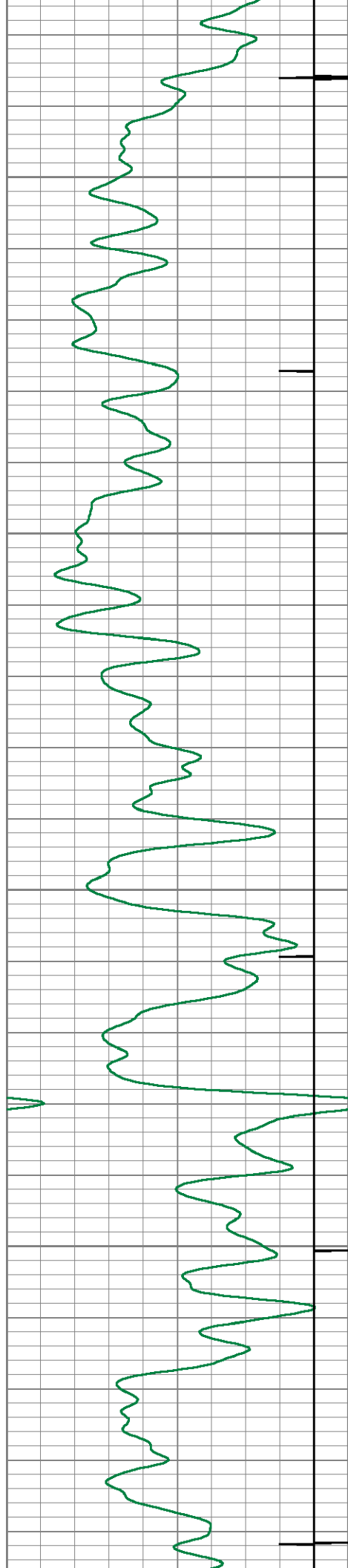
2700

2800



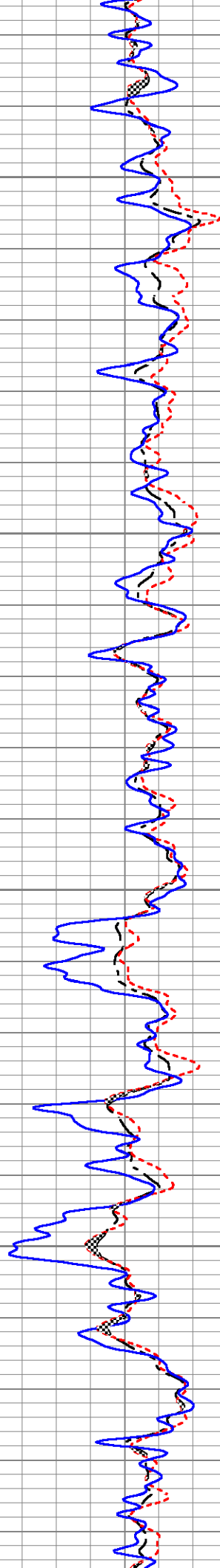


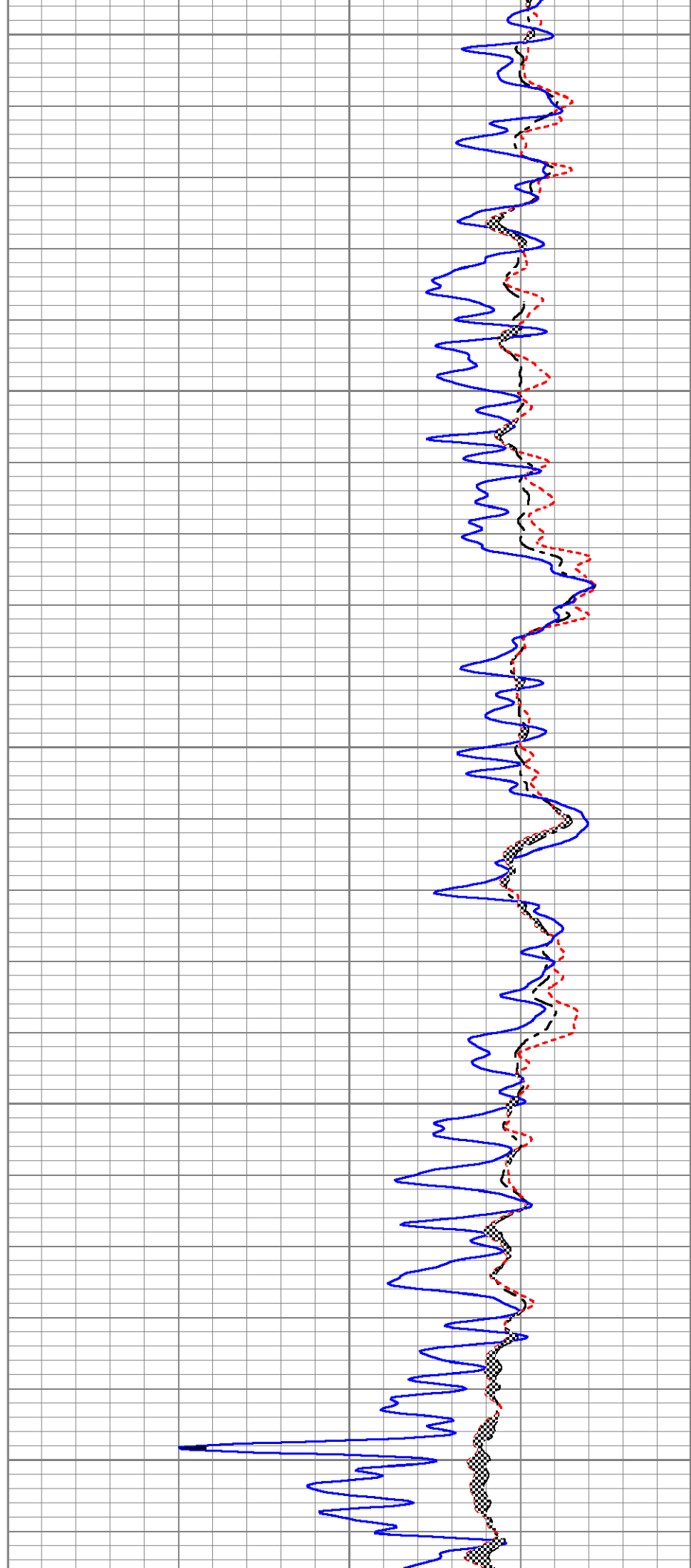
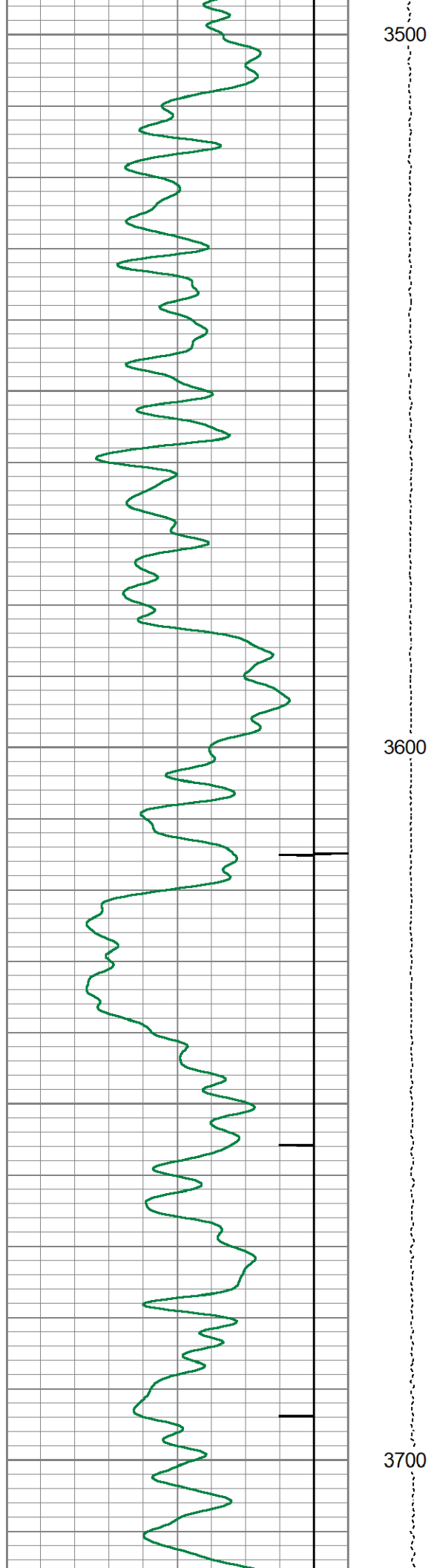


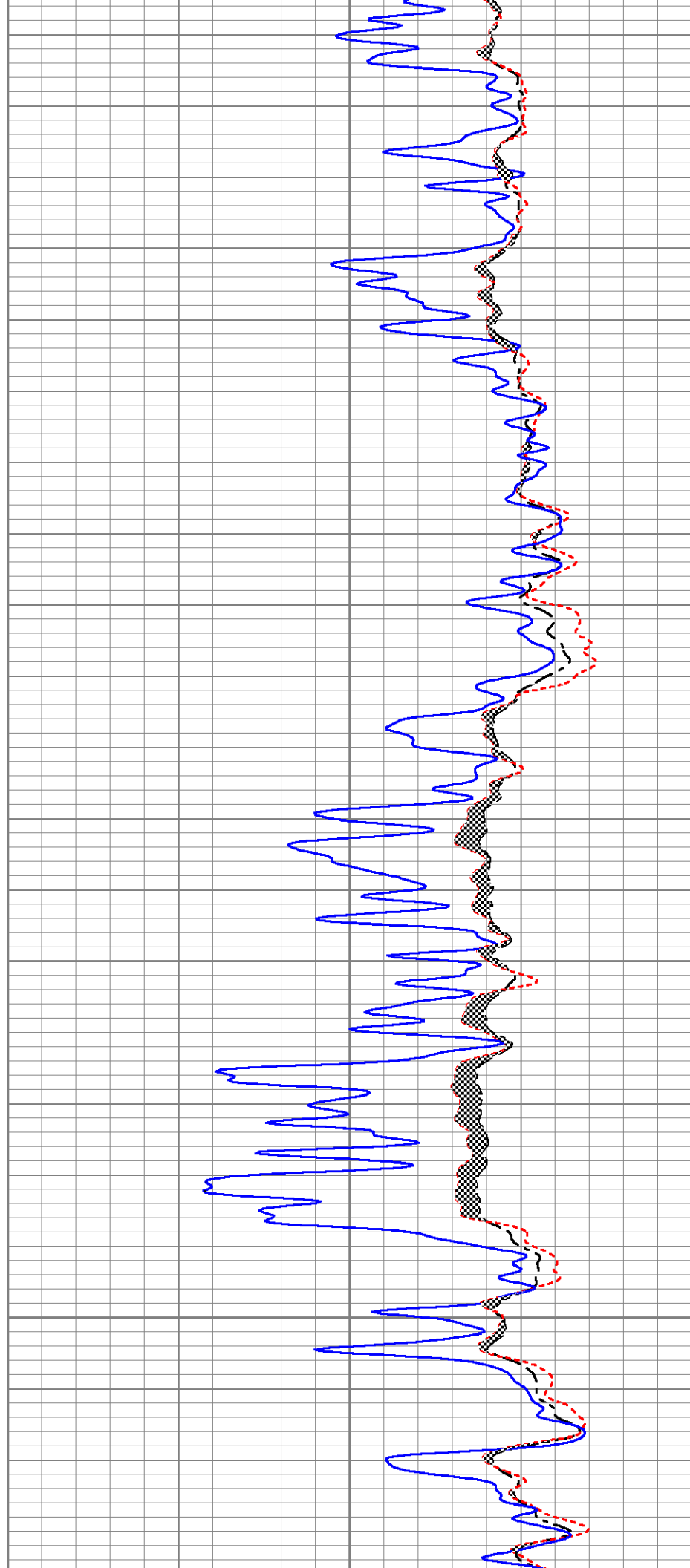
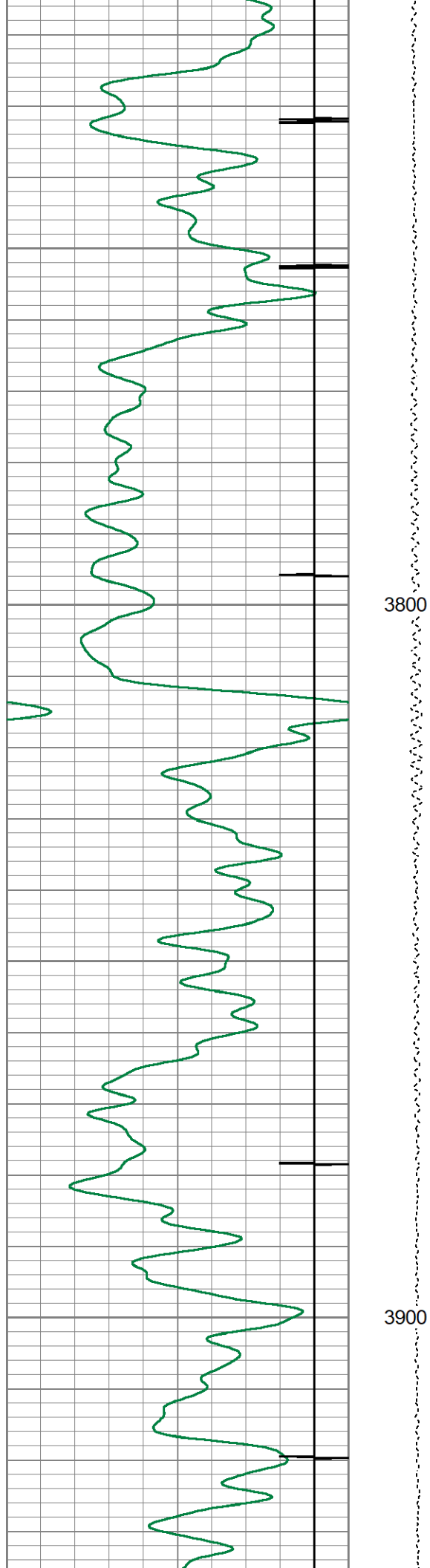


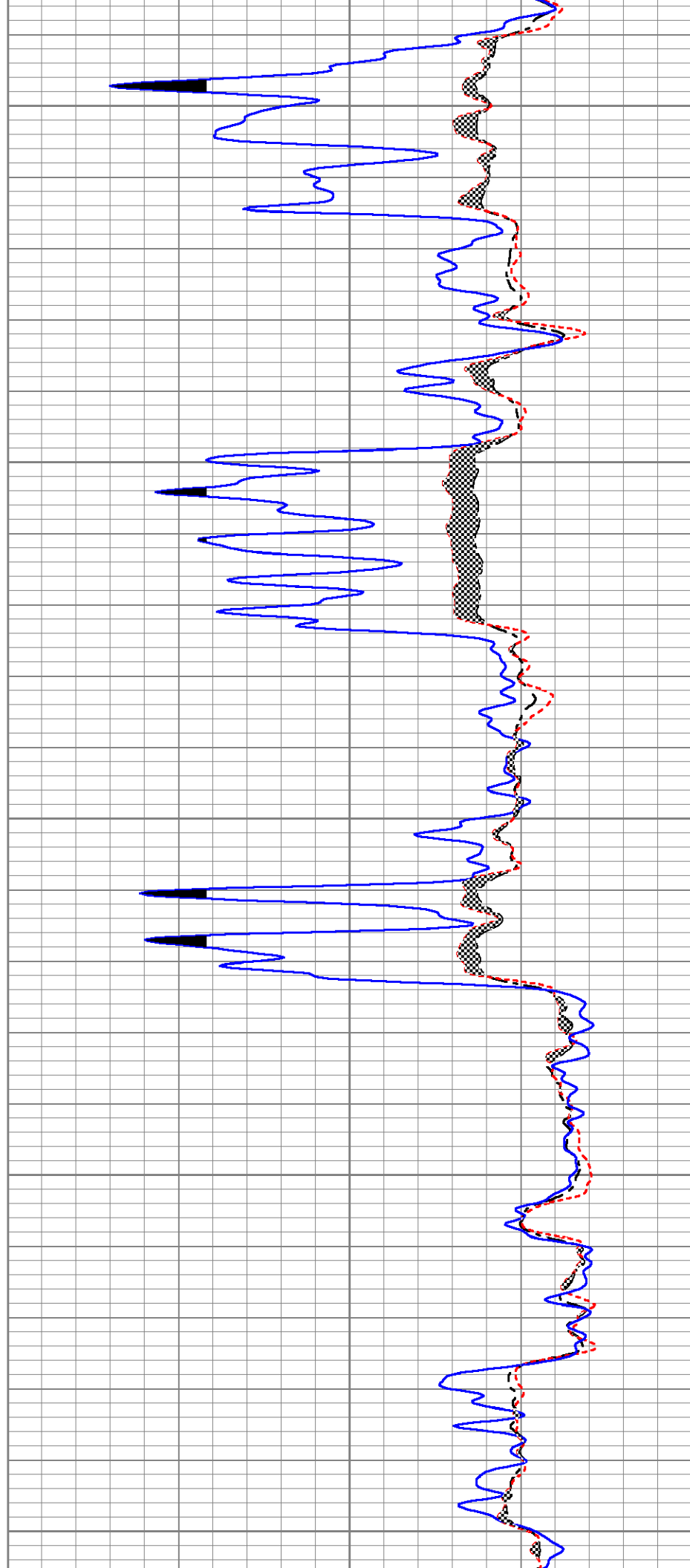
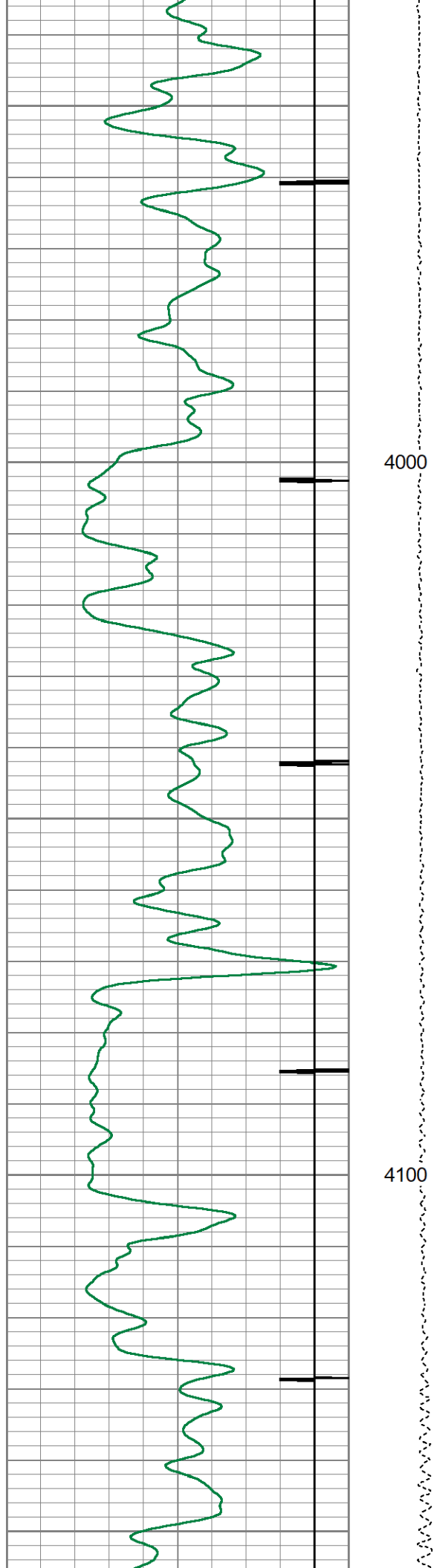
3300

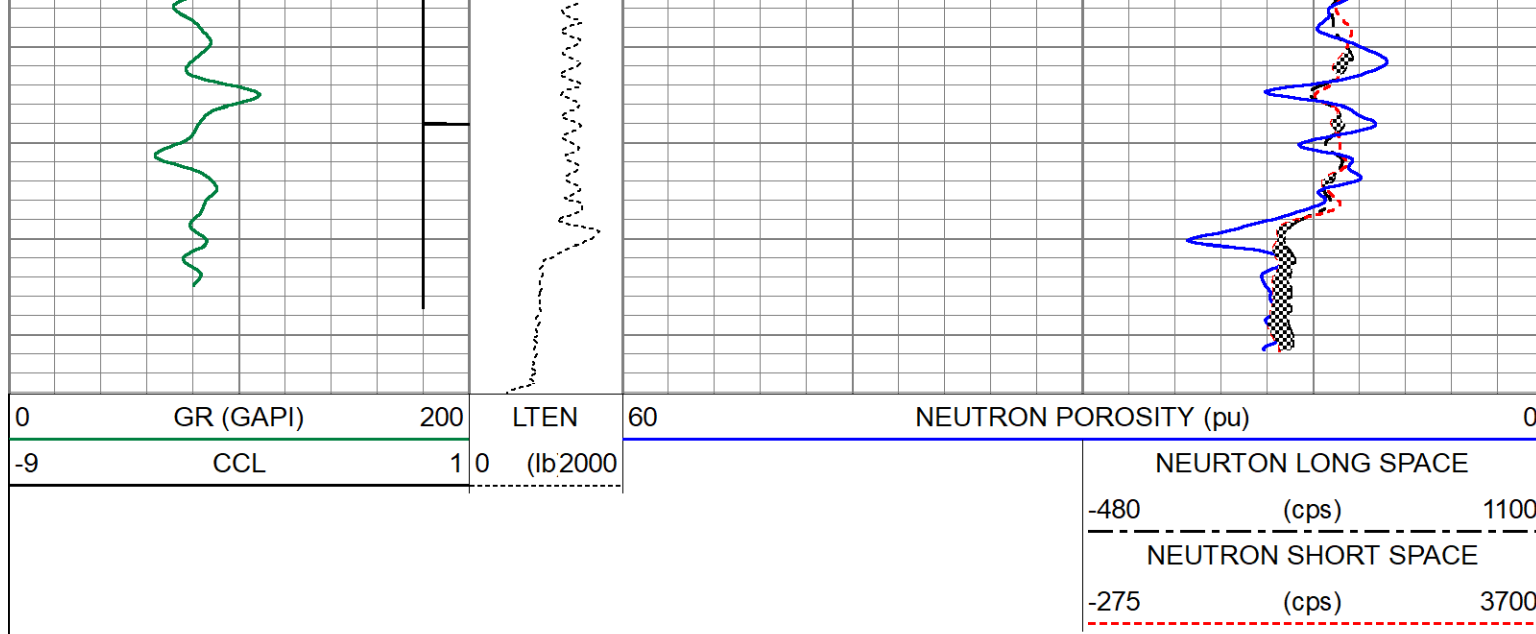
3400











Calibration Report				
Database File	jaques 10 cnl.db			
Dataset Pathname	pass3.4			
Dataset Creation	Tue Jul 24 11:30:00 2018			
Compensated Neutron Calibration Report				
		Type / Serial:	Probe_B / 090117	
		Source / Verifier:	/	
		Temperature:		
SHOP CALIBRATION		Fri Jan 30 17:39:55 2009		
	Cal Tube	Units		
Tank Ratio		SS/LS		
Tank Porosity		pu		
LS Detector		cps		
SS Detector		cps		
Tool Ratio		SS/LS		
Tool Porosity		pu		
Tool Constant =				
Field Verifier	SS Detector	LS Detector	Ratio	Porosity
PRE-SURVEY VERIFICATION				
	SS Detector	LS Detector	Ratio	Porosity
POST-SURVEY VERIFICATION				
	SS Detector	LS Detector	Ratio	Porosity

Gamma Ray Calibration Report				
Serial Number:	275			
Tool Model:	Probe			
Performed:	Tue Jul 24 08:29:13 2018			
Calibrator Value:	1.0	GAPI		
Background Reading:	0.0	cps		
Calibrator Reading:	1.0	cps		

Calibrator Reading:	1.0	cps
Sensitivity:	1.0000	GAPI/cps

Segmented Cement Bond Log Calibration Report

Serial Number:	allied
Tool Model:	Probe275T
Calibration Casing Diameter:	5.500 in
Calibration Depth:	56.117 ft

Master Calibration, performed Tue Jul 24 09:53:32 2018:

	Raw (v)		Calibrated (mv)		Results	
	Zero	Cal	Zero	Cal	Gain	Offset
3'	0.000	0.825	0.500	71.921	86.520	0.500
CAL	0.003	0.974				
5'	0.000	0.732	0.500	71.921	97.634	0.500
SUM						
S1	0.000	0.827	0.000	100.000	120.887	-0.000
S2	0.000	0.838	0.000	100.000	119.339	-0.000
S3	-0.003	0.822	0.000	100.000	121.312	0.336
S4	-0.000	0.811	0.000	100.000	123.263	0.010
S5	-0.001	0.805	0.000	100.000	124.206	0.073
S6	-0.002	0.823	0.000	100.000	121.276	0.232
S7	0.000	0.807	0.000	100.000	123.964	-0.000
S8	0.000	0.850	0.000	100.000	117.700	-0.000

Internal Reference Calibration, performed Tue Jun 19 13:25:20 2012:

	Raw (v)		Calibrated (v)		Results	
	Zero	Cal	Zero	Cal	Gain	Offset
CAL	0.000	0.000	0.003	0.974	1.000	0.000

Air Zero Calibration, performed Thu Oct 19 09:04:41 2017:

	Raw (v)	Calibrated (v)	Results
	Zero	Zero	Offset
3'	0.000	0.000	0.000
5'	0.000	0.000	0.000
SUM			
S1	0.000	0.000	0.000
S2	0.000	0.000	0.000
S3	0.000	0.000	0.000
S4	0.000	0.000	0.000
S5	0.000	0.000	0.000
S6	0.000	0.000	0.000
S7	0.000	0.000	0.000
S8	0.000	0.000	0.000