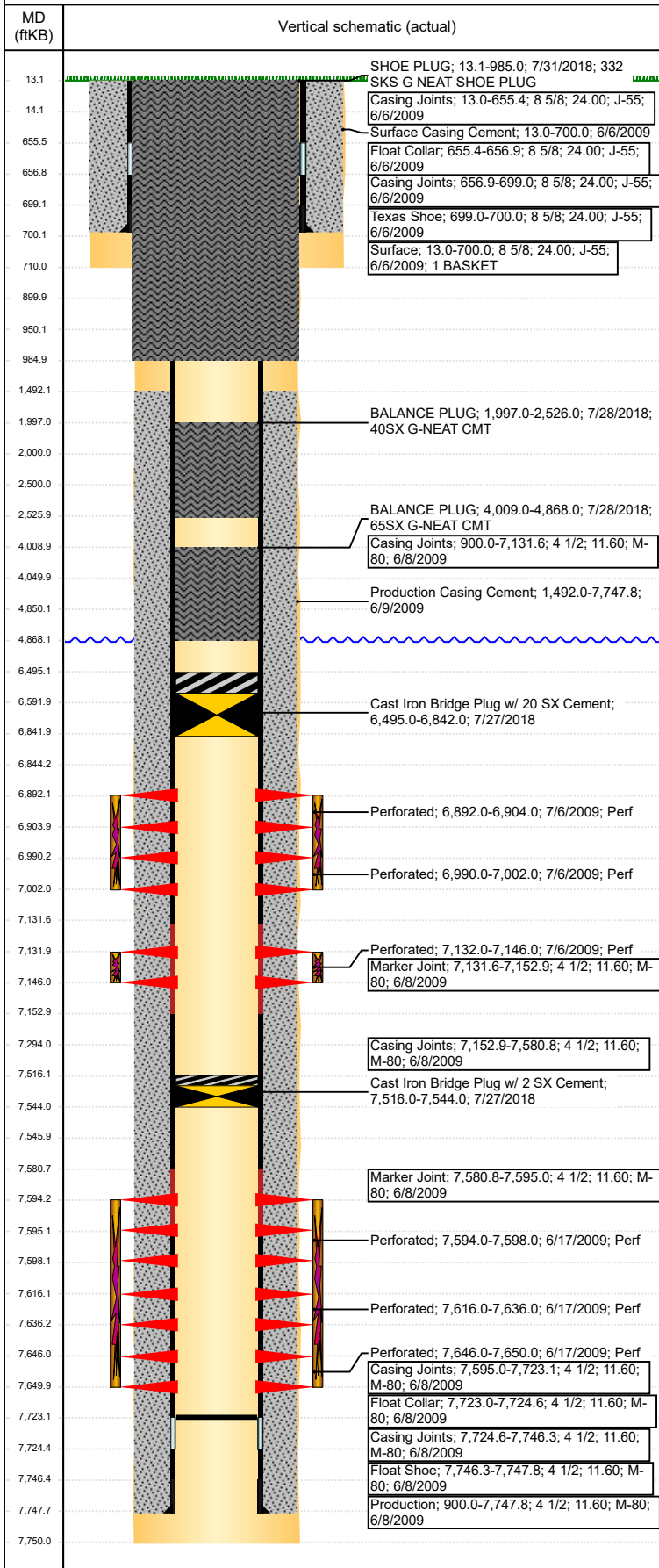


Well Name: HARSH H26-10

VERTICAL - ORIGINAL HOLE, 8/22/2018 10:53:55 AM



Well Header

API 05-123-29677	Business Unit DJ BASIN	District 15	Well Config VERTICAL
Original KB Elevation (ft) 4,870	KB - GL / MSL (ftKB) 13.00	Spud Date 6/5/2009	P & A Date 7/31/2018

Comment

Directions To Well

CR 30 & CR 47, SOUTH .5 MILE, WEST .3 MILE, SOUTHWEST .1 MILE INTO

Congressional Location

Quarter 3 NW	Quarter 4 SE	Section 26	Township 3	Twnshp N/S Dir N	Range 65	Range E/W Dir W
-----------------	-----------------	---------------	---------------	---------------------	-------------	--------------------

Bottom Hole Location

North-South Distance (ft)	From N or S Line	East-West Distance (ft)	From E or W Line
---------------------------	------------------	-------------------------	------------------

Plug Back Total Depths

Date	Depth (ftKB)	Method	Com
6/8/2009	7,723.0	CASING TALLY	
10/13/2009	7,723.0	TAG	C/O TO 7723' KB W/ NITROGEN.

Wellbore Sections

Section Des	Size (in)	Act Top, MD (ftKB)	Act Btm, MD (ftKB)
SURFACE	12 1/4	13	710
PRODUCTION	7 7/8	710	7,750

Zone Statuses

Zone Name	Status Date	Status	Fluid Type	Job	Prod Method
J SAND	7/14/2009	PR	Water	DRILLING/CO...	Flowing
J SAND	7/9/2010	PR			
J SAND	7/4/2012	PR			
J SAND	3/22/2017	SI			
J SAND	7/27/2018	P&A		ABANDON WE...	
NIOBRARA	7/14/2009	PR	Gas	DRILLING/CO...	Flowing
NIOBRARA	7/14/2009	PR			
NIOBRARA	7/14/2009	PR			
NIOBRARA	7/9/2010	PR			
NIOBRARA	7/27/2018	P&A	Water	ABANDON WE...	Flowing
CODELL	7/14/2009	PR	Gas	DRILLING/CO...	Flowing
CODELL	7/14/2009	PR			
CODELL	7/14/2009	PR			
CODELL	7/9/2010	PR			
CODELL	7/4/2012	PR	Oil		Flowing
CODELL	3/22/2017	SI	Water		Flowing
CODELL	7/27/2018	P&A		ABANDON WE...	

Casing Strings

Surface, 700.0ftKB

Casing Description	Run Date	OD (in)	Wt/Len (l...)	Grade	Top, MD (ft...)	MD (ftKB)
Surface	6/6/2009	8 5/8	24.00	J-55	13.0	700.0

Production, 7,747.8ftKB

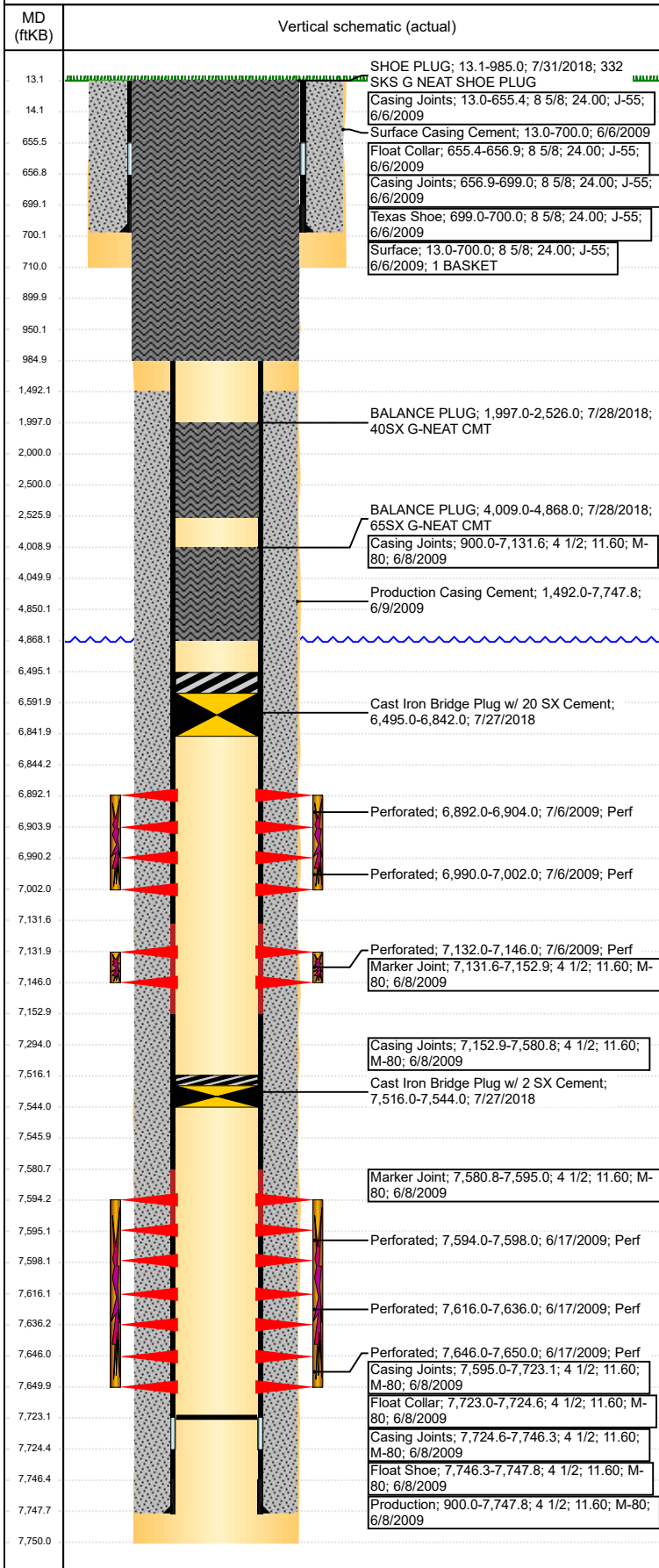
Casing Description	Run Date	OD (in)	Wt/Len (l...)	Grade	Top, MD (ft...)	MD (ftKB)
Production	6/8/2009	4 1/2	11.60	M-80	13.1	7,747.8

Cement

Description	Top Depth (ftKB)	Bottom Depth (ftKB)
Surface Casing Cement	13.0	700.0
Production Casing Cement	1,492.0	7,747.8
Balance Plug	4,050.0	4,850.0
Balance Plug	2,000.0	2,500.0
Balance Plug	900.0	950.0
Balance Plug	700.0	900.0
Balance Plug	13.0	700.0
BALANCE PLUG	4,009.0	4,868.0
BALANCE PLUG	1,997.0	2,526.0
SHOE PLUG	13.1	985.0

Well Name: HARSH H26-10

VERTICAL - ORIGINAL HOLE, 8/22/2018 10:53:57 AM



Tubing Strings

Tubing Description	Run Date	String...	ID (in)	Wt (lb/ft)	Grade	Len (ft)	Set De...
Tubing - Production	10/13/2009	2 3/8	2.00	4.70	J-55	7,553.64	7,564.9

Tubing Components

Item Des	OD (in)	Wt (lb/ft)	Grade	Jts	Len (ft)	Btm (ftKB)	Btm (TVD) (ftKB)
Tubing	2 3/8	4.70	J-55	245	7,552.04	7,565.0	
Landing Collar	2 3/8	4.70	N-80		1.20	7,566.2	7,564.5
Blade Bit	2 3/8	4.70	J-55		0.40	7,566.6	7,564.9

Other In Hole

Run Date	Des	OD (in)	Top (ftKB)	Btm (ftKB)
4/24/2018	Cast Iron Bridge Plug w/ 20 SX Cement	4	6,592.0	6,844.0
4/24/2018	Cast Iron Bridge Plug w/ 20 SX Cement	4	7,294.0	7,546.0
7/27/2018	Cast Iron Bridge Plug w/ 20 SX Cement	4	6,495.0	6,842.0
7/27/2018	Cast Iron Bridge Plug w/ 2 SX Cement	4	7,516.0	7,544.0

Logs

Date	Type	Top, MD (ftKB)	Btm, MD (ftKB)
6/8/2009	SPECTRAL DENSITY/Pe/DSN NEUTRON/SP/ARRAY COMPENSATED TRUE RESISTIVITY/6 ARM CALIPER	698.0	7,750.0
6/8/2009	SPECTRAL GAMMA RAY	6,100.0	7,750.0
10/1/2014	GYRO	10.0	7,450.0

Perforation Data

Linked Zone	Bnch/St g	Sum of Entered Shot Total	Top (ftKB)	Btm (ftKB)	Date
NIOBRARA, ORIGINAL HOLE	B	24	6,892.00	6,904.00	7/6/2009
NIOBRARA, ORIGINAL HOLE	C	24	6,990.00	7,002.00	7/6/2009
CODELL, ORIGINAL HOLE		28	7,132.00	7,146.00	7/6/2009
J SAND, ORIGINAL HOLE		16	7,594.00	7,598.00	6/17/2009
J SAND, ORIGINAL HOLE		80	7,616.00	7,636.00	6/17/2009
J SAND, ORIGINAL HOLE		16	7,646.00	7,650.00	6/17/2009

Total (Sum)

188

Stimulation Intervals

Start Date	7/6/2009	Primary Job Type	DRILLING/COMPLETION - ORIGINAL
Technical Result	Success	Tech Result Details	According to Plan
Tech Result Note	Comment (J-SAND): REVERSE STEP RATE RESULTS. PERF OPEN=30, PERF FRIC=74 PSI, NWB=77 PSI, WB=483 PSI. TOTAL=638 PSI. ISDP=1310, 5 MIN=1126 PSI, 10MIN=1014 PSI, 15MIN=923 PSI. POST JOB ISDP=2213 PSI, 5MIN=1988 PSI. JOB WENT WELL WITH NO ISSUES TO REPORT.		
Start Date	7/6/2009	Primary Job Type	DRILLING/COMPLETION - ORIGINAL
Technical Result	Success	Tech Result Details	According to Plan
Tech Result Note	Comment (CODELL): HAD SOME PROBLEMS WITH THE VISCOSITY 3 CPS LOW BECAUSE THE DRY GEL PRODUCT WAS A LITTLE DAMP. INCREASED LOADING TO GET DESIRED VISCOSITY. JOB WENT WELL WITH NO OTHER ISSUES TO REPORT.		
Start Date	7/6/2009	Primary Job Type	DRILLING/COMPLETION - ORIGINAL
Technical Result	Success	Tech Result Details	According to Plan
Tech Result Note	Comment (NIOBRARA): JOB WENT WELL WITH NO ISSUES TO REPORT.		