

0 500 1000 2000

GRAPHIC SCALE IN FEET

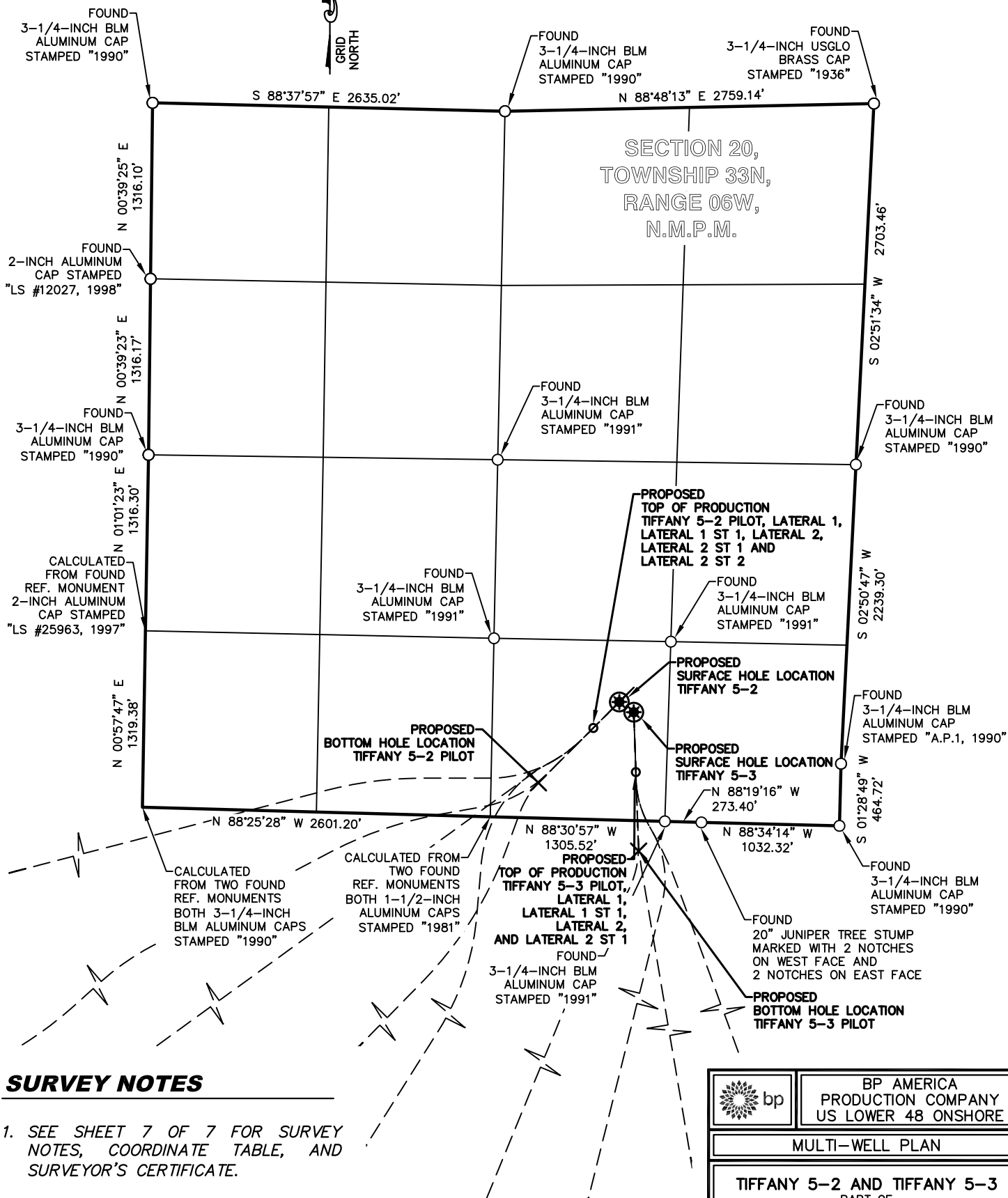


LEGEND

FOUND MONUMENT ○

PROPOSED SURFACE HOLE LOCATION ⊗

PROPOSED BOTTOM HOLE LOCATION ×



SURVEY NOTES

- SEE SHEET 7 OF 7 FOR SURVEY NOTES, COORDINATE TABLE, AND SURVEYOR'S CERTIFICATE.



BP AMERICA
PRODUCTION COMPANY
US LOWER 48 ONSHORE

MULTI-WELL PLAN

TIFFANY 5-2 AND TIFFANY 5-3

PART OF
SECTION 20, 28, 29 30, 31 AND 32,
TOWNSHIP 33N, RANGE 06W, N.M.P.M.
LA PLATA COUNTY, COLORADO

DRAWN BY
CFW/RLM

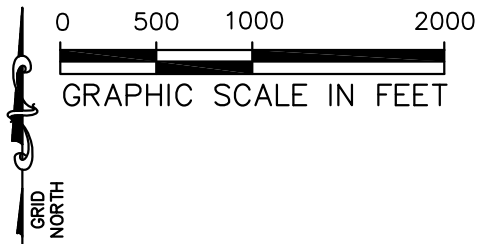
CHECKED BY
BMB

SCALE
1"=1000'

DATE
08/03/2018

SHEET
1 OF 7

REVISION

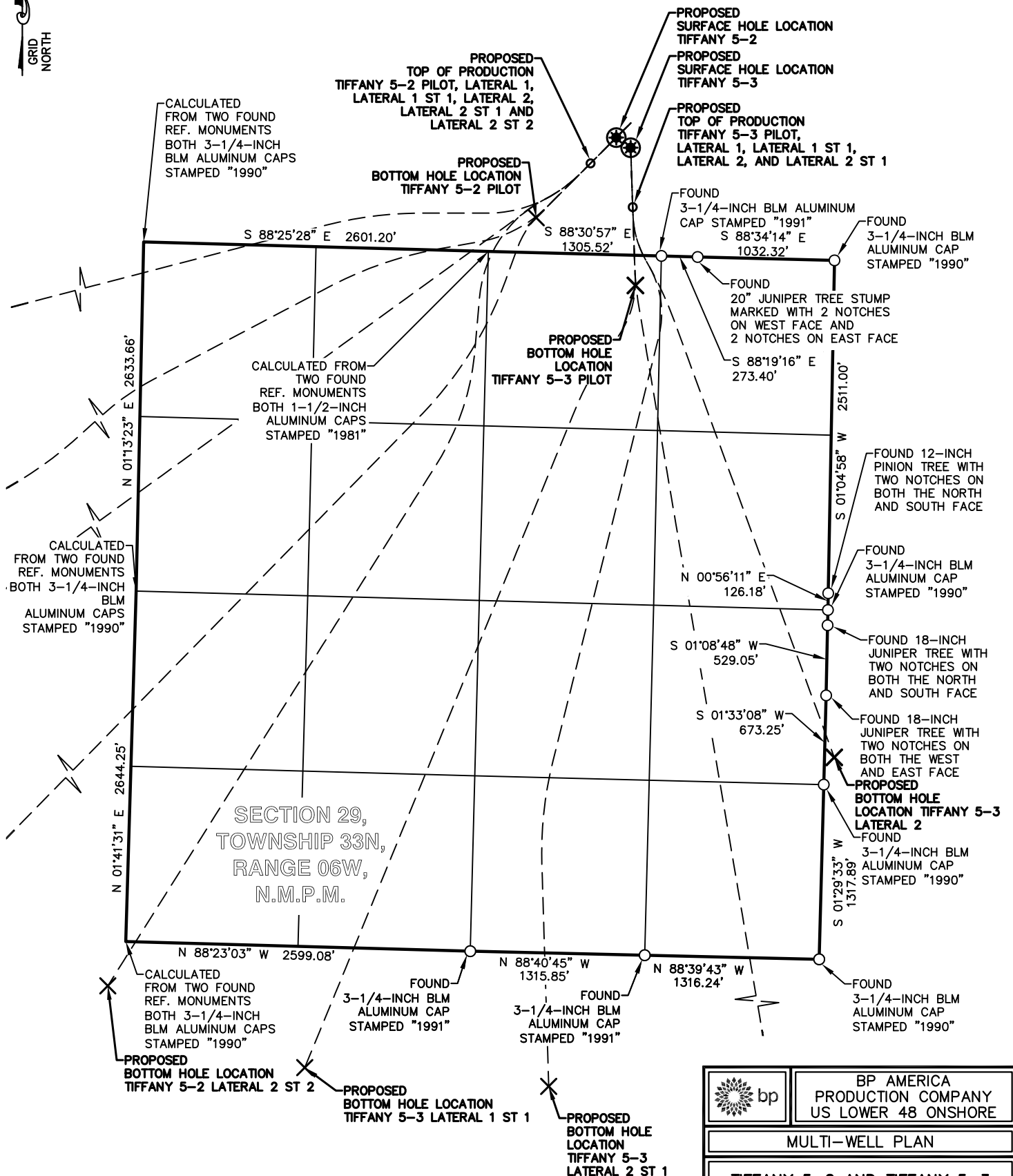


LEGEND

FOUND MONUMENT ○

PROPOSED SURFACE HOLE LOCATION *

PROPOSED BOTTOM HOLE LOCATION x



BP AMERICA
PRODUCTION COMPANY
US LOWER 48 ONSHORE

MULTI-WELL PLAN

TIFFANY 5-2 AND TIFFANY 5-3

PART OF
SECTION 20, 28, 29, 30, 31 AND 32,
TOWNSHIP 33N, RANGE 06W, N.M.P.M.
LA PLATA COUNTY, COLORADO

DRAWN BY
CFW/RLM

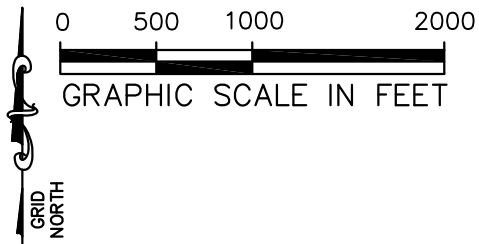
CHECKED BY
BMB

SCALE
1"=1000'

DATE
08/03/2018

SHEET
2 OF 7

REVISION

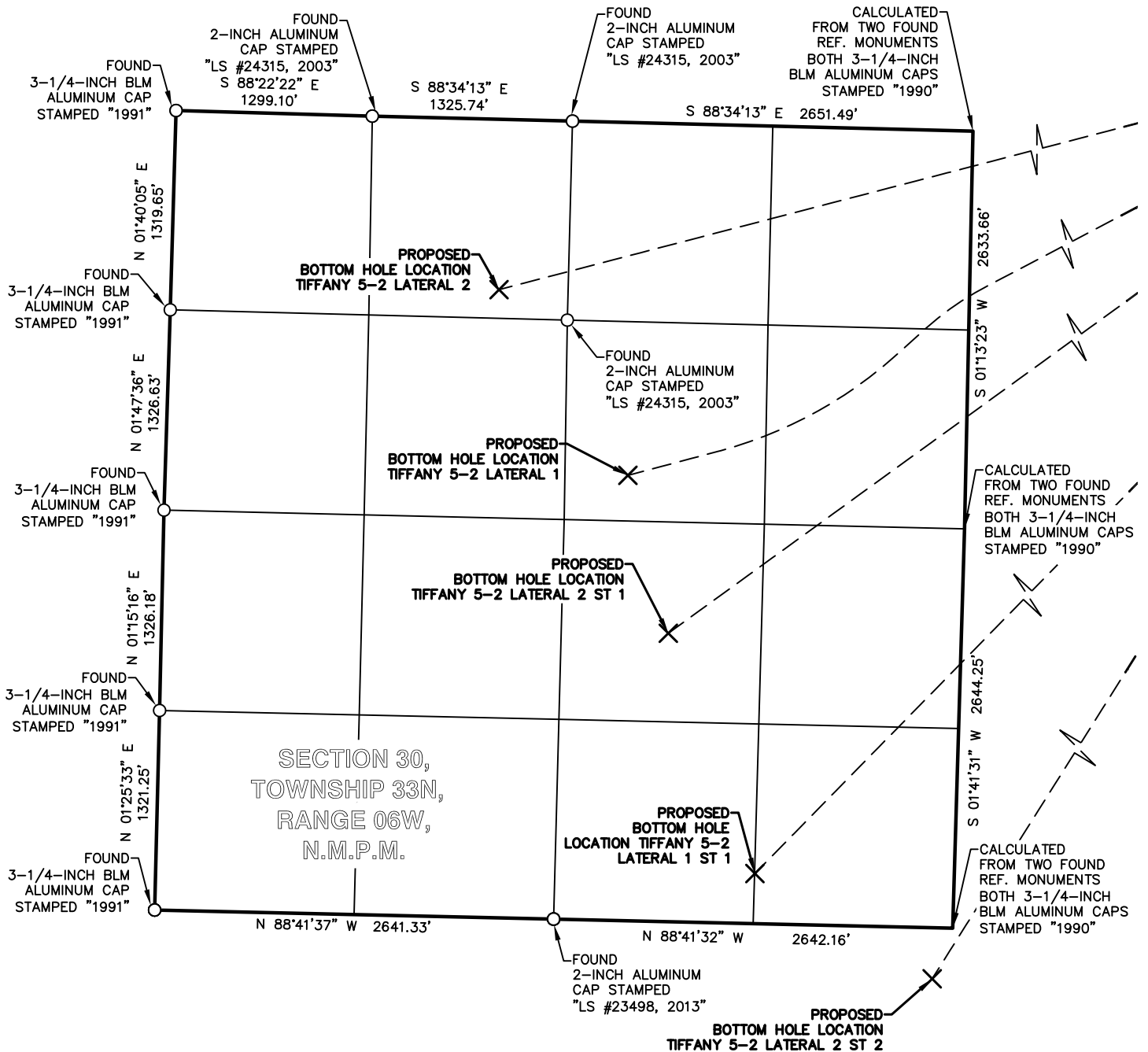


LEGEND

FOUND MONUMENT ○

PROPOSED SURFACE HOLE LOCATION ⊗

PROPOSED BOTTOM HOLE LOCATION ×



BP AMERICA
PRODUCTION COMPANY
US LOWER 48 ONSHORE

MULTI-WELL PLAN

TIFFANY 5-2 AND TIFFANY 5-3

PART OF
SECTION 20, 28, 29 30, 31 AND 32,
TOWNSHIP 33N, RANGE 06W, N.M.P.M.
LA PLATA COUNTY, COLORADO

DRAWN BY
CFW/RLM

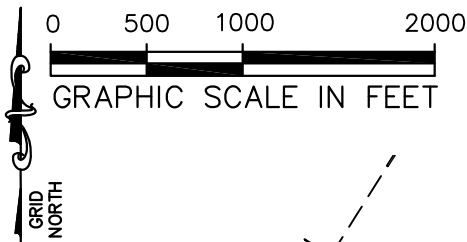
CHECKED BY
BMB

SCALE
1"=1000'

DATE
08/03/2018

SHEET
3 OF 7

REVISION

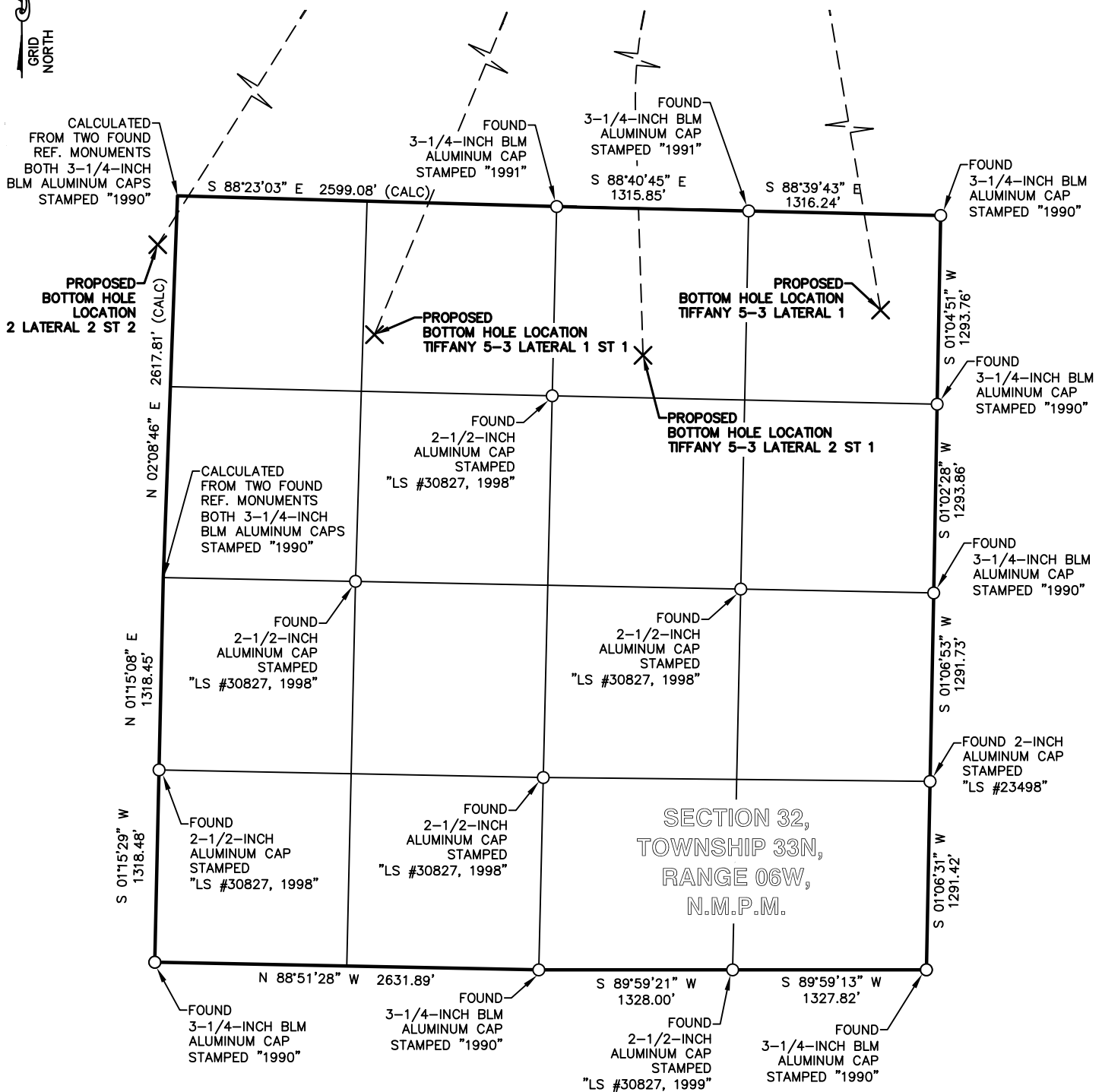


LEGEND

FOUND MONUMENT ○

PROPOSED SURFACE HOLE LOCATION *

PROPOSED BOTTOM HOLE LOCATION x



BP AMERICA
PRODUCTION COMPANY
US LOWER 48 ONSHORE

MULTI-WELL PLAN

TIFFANY 5-2 AND TIFFANY 5-3

PART OF
SECTION 20, 28, 29 30, 31 AND 32,
TOWNSHIP 33N, RANGE 06W, N.M.P.M.
LA PLATA COUNTY, COLORADO

DRAWN BY
CFW/RLM

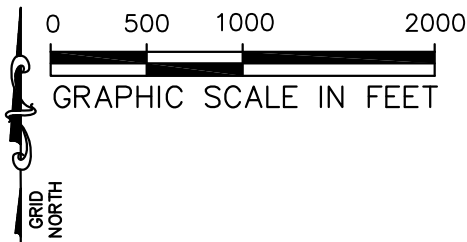
CHECKED BY
BMB

SCALE
1"=1000'

DATE
08/03/2018

SHEET
4 OF 7

REVISION

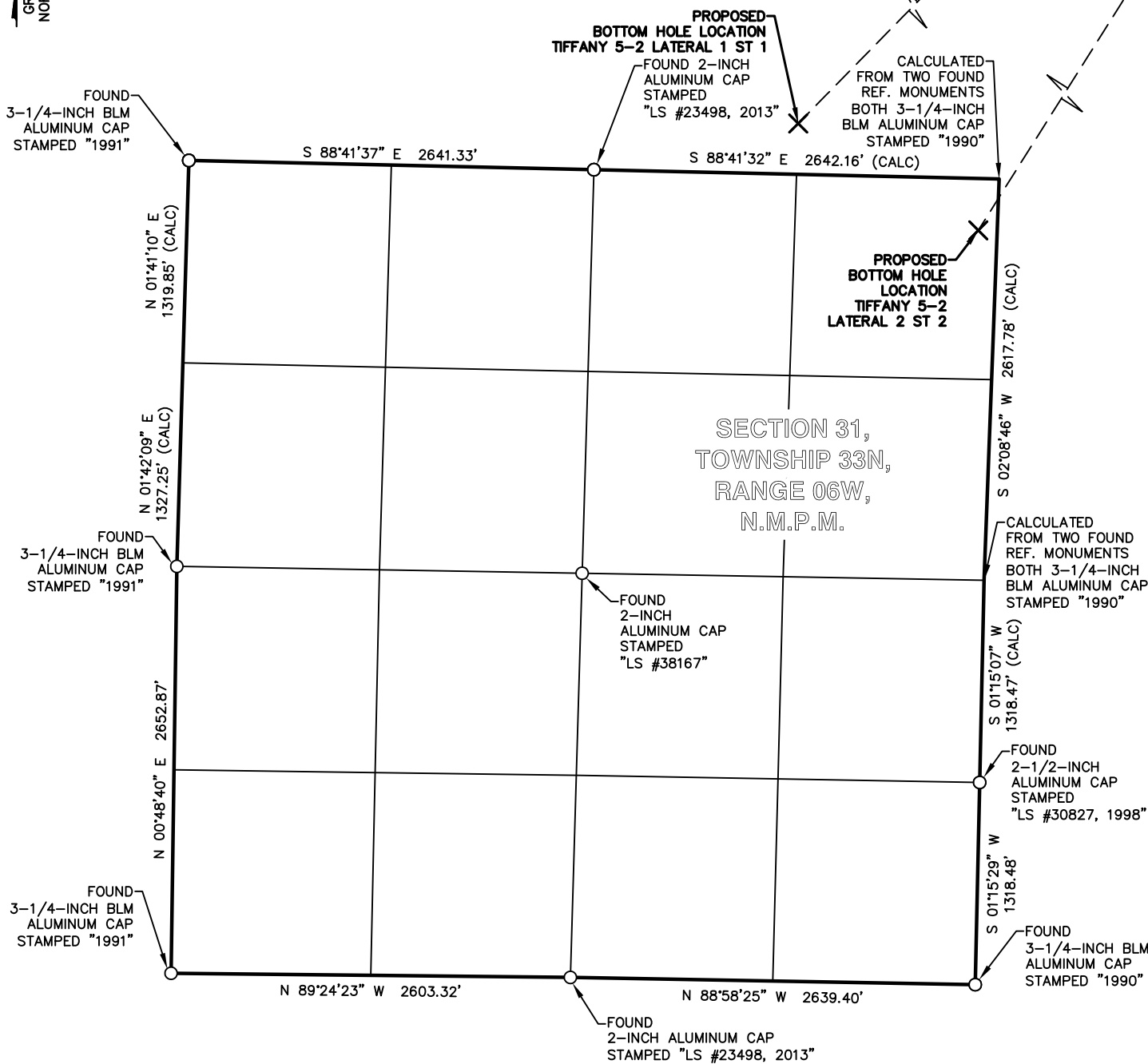



LEGEND

FOUND MONUMENT ○

PROPOSED SURFACE HOLE LOCATION ⊗

PROPOSED BOTTOM HOLE LOCATION ×

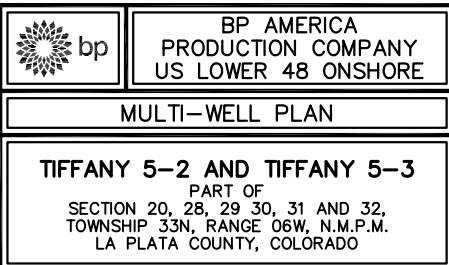


 **BP AMERICA
PRODUCTION COMPANY
US LOWER 48 ONSHORE**

WELL LOCATION PLAT

TIFFANY 5-2 AND TIFFANY 5-3
PART OF
SECTION 20, 28, 29 30, 31 AND 32,
TOWNSHIP 33N, RANGE 06W, N.M.P.M.
LA PLATA COUNTY, COLORADO

DRAWN BY CFW/RLM	CHECKED BY BMB	SCALE 1"=1000'	DATE 08/03/2018	SHEET 5 OF 7	REVISION
---------------------	-------------------	-------------------	--------------------	-----------------	----------



DRAWN BY CFW/RLM	CHECKED BY BMB	SCALE 1"=1000'	DATE 08/03/2018	SHEET 6 OF 7	REVISION
---------------------	-------------------	-------------------	--------------------	-----------------	----------

TIFFANY 5-2 WELLBORE DISTANCES	
SHL TO TOP	585'
TOP TO BHL PILOT	580'
TOP TO BHL LATERAL 1	6,441'
SHL TO BHL LATERAL 1 ST 1	7,371'
TOP TO BHL LATERAL 2	6,778'
TOP TO BHL LATERAL 2 ST 1	6,665'
TOP TO BHL LATERAL 2 ST 2	7,335'


TIFFANY 5-2	CSZ NAD'83	NAD'83	TIES	SEC / TWP / RNG	ELEVATION
PROPOSED SURFACE HOLE LOCATION (SHL)	N (Y) = 1,158,552.48' E (X) = 2,410,625.43'	LAT. = 37.08459686°N LON. = 107.52051855°W	FSL = 883' FEL = 1679'	SEC 20, TWP 33N, RNG 06W	EXISTING GROUND 6623.54'
PROPOSED TOP OF PRODUCTION (TOP) PILOT, LAT 1, LAT 1 ST, LAT 2, AND LAT 2 ST 1	N (Y) = 1,158,358.24' E (X) = 2,410,431.19'	LAT. = 37.08405198°N LON. = 107.52116984°W	FSL = 684' FEL = 1863'	SEC 20, TWP 33N, RNG 06W	PROPOSED GRADE 6625.66'
PROPOSED BOTTOM HOLE LOCATION (BHL) PILOT	N (Y) = 1,157,948.08' E (X) = 2,410,021.03'	LAT. = 37.08290141°N LON. = 107.52254508°W	FSL = 263' FEL = 2258'	SEC 20, TWP 33N, RNG 06W	
PROPOSED BOTTOM HOLE LOCATION (BHL) LAT 1	N (Y) = 1,155,486.52' E (X) = 2,404,776.41'	LAT. = 37.07582941°N LON. = 107.54033451°W	FNL = 2335' FEL = 2235'	SEC 30, TWP 33N, RNG 06W	
PROPOSED BOTTOM HOLE LOCATION (BHL) LAT 1 ST 1	N (Y) = 1,152,850.94' E (X) = 2,405,616.74'	LAT. = 37.06864320°N LON. = 107.53725790°W	FSL = 332' FEL = 1320'	SEC 30, TWP 33N, RNG 06W	
PROPOSED BOTTOM HOLE LOCATION (BHL) LAT 2	N (Y) = 1,156,716.34' E (X) = 2,403,923.56'	LAT. = 37.07915496°N LON. = 107.54334922°W	FNL = 1127' FWL = 2171'	SEC 30, TWP 33N, RNG 06W	
PROPOSED BOTTOM HOLE LOCATION (BHL) LAT 2 ST 1	N (Y) = 1,154,440.84' E (X) = 2,405,043.08'	LAT. = 37.07297425°N LON. = 107.53934245°W	FSL = 1908' FEL = 1940'	SEC 30, TWP 33N, RNG 06W	
PROPOSED BOTTOM HOLE LOCATION (BHL) LAT 2 ST 2	N (Y) = 1,152,154.61' E (X) = 2,406,790.48'	LAT. = 37.06680149°N LON. = 107.53318422°W	FNL = 338' FEL = 123'	SEC 31, TWP 33N, RNG 06W	

TIFFANY 5-3 WELLBORE DISTANCES	
SHL TO TOP	448'
TOP TO BHL PILOT	591'
TOP TO BHL LATERAL 1	6,404'
SHL TO BHL LATERAL 1 ST 1	7,010'
TOP TO BHL LATERAL 2	4,430'
TOP TO BHL LATERAL 2 ST 1	6,780'

TIFFANY 5-3	CSZ NAD'83	NAD'83	TIES	SEC / TWP / RNG	ELEVATION
PROPOSED SURFACE HOLE LOCATION (SHL)	N (Y) = 1,158,475.92' E (X) = 2,410,733.57'	LAT. = 37.08439307°N LON. = 107.52014226°W	FSL = 810' FEL = 1567'	SEC 20, TWP 33N, RNG 06W	EXISTING GROUND 6623.37'
PROPOSED TOP OF PRODUCTION (TOP) PILOT, LAT 1, LAT 1 ST, LAT 2, AND LAT 2 ST 1	N (Y) = 1,158,028.25' E (X) = 2,410,749.20'	LAT. = 37.08316481°N LON. = 107.52005551°W	FSL = 362' FEL = 1532'	SEC 20, TWP 33N, RNG 06W	PROPOSED GRADE 6625.66'
PROPOSED BOTTOM HOLE LOCATION (BHL) PILOT	N (Y) = 1,157,437.29' E (X) = 2,410,769.84'	LAT. = 37.08154341°N LON. = 107.51994097°W	FNL = 228' FEL = 1497'	SEC 29, TWP 33N, RNG 06W	
PROPOSED BOTTOM HOLE LOCATION (BHL) LAT 1	N (Y) = 1,151,706.49' E (X) = 2,411,743.45'	LAT. = 37.06586589°N LON. = 107.51618040°W	FNL = 658' FEL = 400'	SEC 32, TWP 33N, RNG 06W	
PROPOSED BOTTOM HOLE LOCATION (BHL) LAT 1 ST 1	N (Y) = 1,151,537.88' E (X) = 2,408,275.92'	LAT. = 37.06519680°N LON. = 107.52804869°W	FNL = 913' FWL = 1384'	SEC 32, TWP 33N, RNG 06W	
PROPOSED BOTTOM HOLE LOCATION (BHL) LAT 2	N (Y) = 1,153,877.73' E (X) = 2,412,269.05'	LAT. = 37.07185870°N LON. = 107.51454000°W	FSL = 1516' FWL = 74'	SEC 28, TWP 33N, RNG 06W	
PROPOSED BOTTOM HOLE LOCATION (BHL) LAT 2 ST 1	N (Y) = 1,151,395.98' E (X) = 2,410,115.75'	LAT. = 37.06491670°N LON. = 107.52173438°W	FNL = 1006' FEL = 2021'	SEC 32, TWP 33N, RNG 06W	

SURVEY NOTES

1. BEARING BASIS FOR THIS SURVEY IS BASED ON THE NORTH AMERICAN DATUM OF 1983, COLORADO STATE PLANE COORDINATE SYSTEM, COLORADO SOUTH, ZONE 0503.
2. ELEVATION BASIS FOR THIS SURVEY IS BASED ON THE NORTH AMERICAN VERTICAL DATUM OF 1988 (GEOID12A).
3. SURVEYED IN THE FIELD ON 07/26/2018.
4. BEARINGS AND DISTANCE SHOWN ARE MEASURED IN THE FIELD UNLESS OTHERWISE NOTED.
5. ALL MEASURED DISTANCES SHOWN ARE GRID USING A COMBINED SCALE FACTOR 0.99971362.
6. GPS INSTRUMENT OPERATOR: ROBERT HINAJOSA
7. GPS PDOP VALUE: 6.0/4.3

	BP AMERICA PRODUCTION COMPANY US LOWER 48 ONSHORE
	MULTI-WELL PLAN
	TIFFANY 5-2 AND TIFFANY 5-3 PART OF SECTION 20, 28, 29 30, 31 AND 32, TOWNSHIP 33N, RANGE 06W, N.M.P.M. LA PLATA COUNTY, COLORADO

DRAWN BY CFW/RLM	CHECKED BY BMB	SCALE N/A	DATE 08/03/2018	SHEET 7 OF 7	REVISION
---------------------	-------------------	--------------	--------------------	-----------------	----------