



TEP Rocky Mountain LLC

Site-Specific Waste
Management Plan for the
RWF 12-20 Tank Pad

1058 County Road 215
Parachute, CO 81635-0370

August 7, 2018

1.0 Introduction

The RWF 12-20 Tank Pad location lies within one thousand feet of a Building Unit, therefore this Waste Management Plan (Plan) is being prepared and submitted to satisfy COGCC Rule 303.b.(3)J.ii, Form 2A Oil & Gas Location Assessment Information Requirement for the submittal of the RWF 12-20 Tank Pad Form 2A (document #401619384).

1.1 Purpose

As required by COGCC Rule 303.b.(3)J.ii, the purpose of this Plan is to ensure that "... E&P waste is properly stored, handled, transported, treated, recycled, or disposed to prevent threatened or actual significant adverse environmental impacts to air, water, soil, or biological resources or the extent necessary to ensure compliance with the concentration levels in Table 910-1, with consideration to WQCC ground water standards and classifications" (COGCC Rule 907.a).

This Plan has been developed to provide a description of the wastes that will be stored / managed during production operations at the RWF 12-20 Tank Pad facility (and associated facilities), and the procedures that TEP will follow to provide for the safe and compliant management and handling of these wastes.

2.0 Management of Exploration and Production (E&P) Waste

E&P waste will be managed in accordance with Section 907 Series Rules of the Colorado Oil and Gas Conservation Commission (COGCC), as amended April 1, 2009. Produced water will be the only E&P waste stream managed at the RWF 12-20 Tank Pad and is described in sections below.

2.1 Produced Water

Produced water is generated as a byproduct during oil and gas production activities. Formation water is present in the same production zones as natural gas and oil. This water is brought to the surface with the natural pressure of a well and flows through separators where it is unloaded into produced water tanks.

2.2 Source of Produced Water

The RWF 12-20 Tank Pad will be built adjacent to County Road 246 just north of the Anvil Points Compressor Station. This facility will be used to store oil and water produced from the wells located on the PA 32-13-694 (COGCC Form 2A document #401598785) and the PA 44-13-694 well pads (COGCC Form 2A document #401522763), as well as produced water from the wells located on the DOE 1-M-18 well pad (COGCC location ID 335744).

For the purposes of this Plan, the produced water generated during production operations at the PA 32-13, PA 44-13, and the DOE 1-M-18 well pads will be collected and transported to the RWF 12-20 Tank Pad via a network of new and existing pipelines for centralized storage and subsequent management. The proximity of the three well pads where the produced water originates to the RWF 12-20 Tank Pad is shown on the attached Produced Water Source Map.

2.3 Water Management and Handling

As shown in the attached Plan of Development drawing for the RWF 12-12 Tank Pad, this facility will consist of two 500-bbl oil tanks and six 500-bbl water tanks will be placed inside a tank battery with a metal, lined containment structure measuring approximately 40' x 70.' An emission control device (ECD) will be installed 75' south of the tank battery. A vertical separator and Williams meter will be installed along the east side of the pad.

Produced water stored at the RWF 12-20 Tank Pad will then be transported by truck to the Rulison centralized Water Management Facility where the water will be treated and recycled for future well completions operations.

In the event that water cannot be taken to the Rulison centralized Water Management Facility, other options for re-use and/or disposal of this water may include:

1. Transportation to one of TEP's permitted multi-well pits, special purpose pits, or frac tanks where produced water is stored and cleaned for recycling during completion operations.
2. Injected for disposal into one or more of TEP's permitted Class II UIC wells.
3. Transportation and disposal at an approved third-party, commercial disposal site.
4. Produced water may also be put to beneficial re-use for oil and gas well completions purposes through a separate, approved Water Sharing Agreement with another operator. Any such agreement would require separate approval and authorization from COGCC.

2.4 Non-E&P Wastes

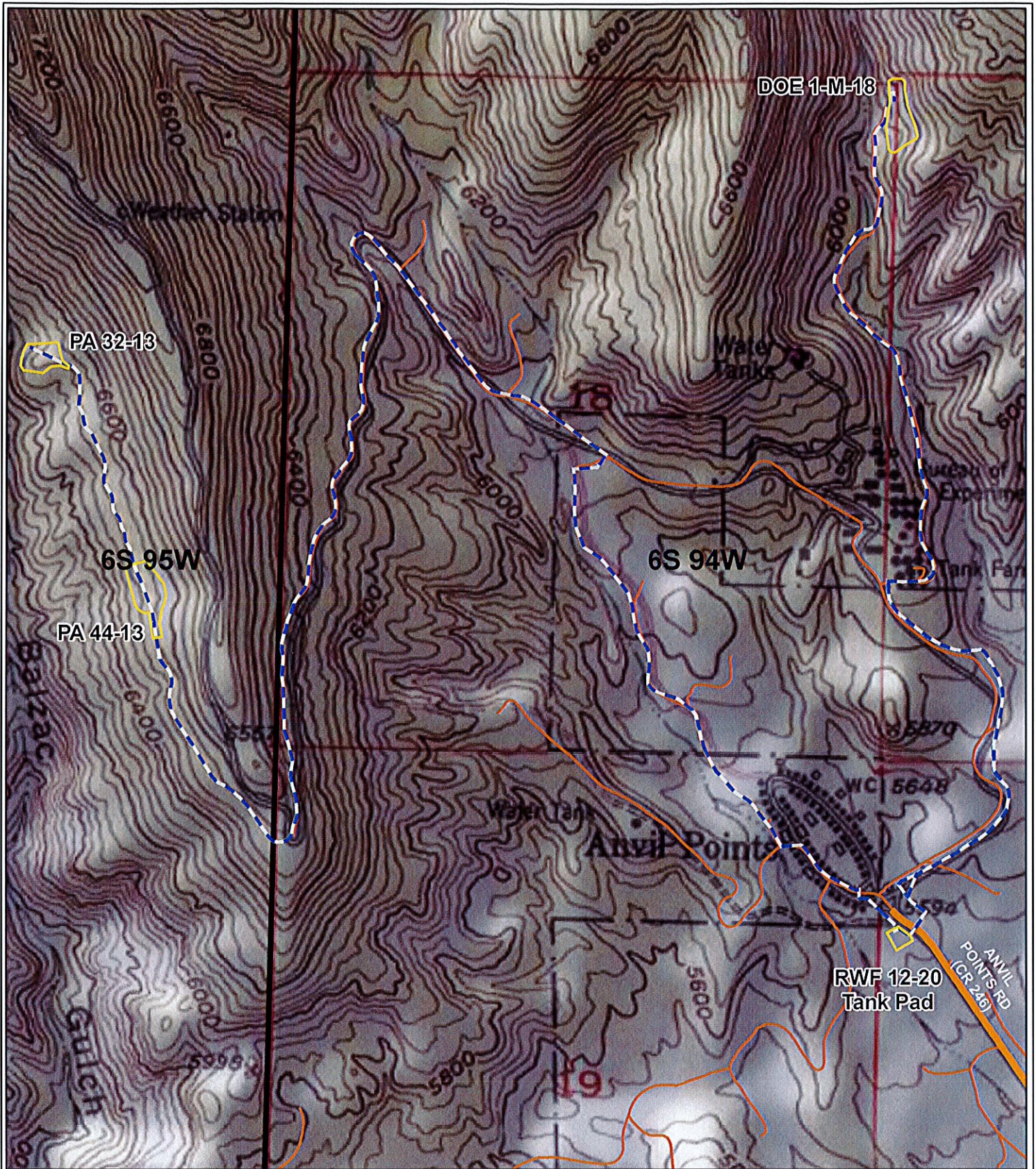
Non-E&P wastes will not be generated as a result of routine operations associated with the RWF 12-20 Tank Pad. All potential *wastes* associated with the operations of this pad will be considered E&P waste, and therefore are exempt from hazardous waste regulations, and will be managed in accordance with COGCC Section 900 rules, *E&P Waste Management* (COGCC, 2018). In the unlikely event that a Non-E&P Waste (i.e., hazardous waste, chemical, or substance) is encountered at this location, it will be managed in accordance with the Colorado Department of Public Health and Environment (CDPHE) Rules for Solid and Hazardous Wastes.

3.0 Spill Response and Cleanup

Any spill or release of produced water or other fluids associated with the production of the wells and associated pipelines described herein, and the RWF 12-20 Tank Pad will be responded to in a manner that complies with COGCC Rules 906 and 910.

The general protocol that will be adhered to when responding to a spill will include:

- Immediately stop the source of the spill
- Isolate and contain any fluids from spreading or entering nearby waterways
- Evacuate, excavate, or otherwise remove spilled fluids and impacted soils as soon as practical. Dispose or treat contaminated soils / media as appropriate.
- Make appropriate notifications to agencies and surface owners within the required timelines as specified in COGCC Rule 906.
- Make repairs / replace defective equipment to prevent incident from re-occurring.
- Conduct verification sampling of excavation to ensure that Table 910-1 clean-up standards have been achieved.
- Reclaim the impacted area to a condition that is similar in use and character as before the spill or release.



Legend

- Proposed Location
- Proposed Water Pipeline
- Road (from Garfield County)
- Existing Road

TEP Rocky Mountain LLC

RWF 12-20 Tank Pad
Water Sources

August 7, 2018



TERRA
ENERGY PARTNERS

0 500 1,000 2,000
Feet



Legend

Proposed Road	Proposed 4" Water Pipeline
Proposed Daylight Line	Proposed 4" Water/2" Condensate
Proposed Pad or Pit	Existing Gas Line
Proposed Production Equipment	Existing Water Pipeline
Proposed Limit of Disturbance	Road (from Garfield County)
Proposed 8" Gas Pipeline	Existing Pad
Proposed 10" Gas Pipeline	Parcel Ownership

TEP Rocky Mountain LLC

**RWF 12-20 Tank Pad
Plan of Development
T6S R94W, Section 20**

July 12, 2018

