



SRC ENERGY

P&A Wellbore Diagram

Operator: SRC Energy	Operator #: 10311
Well Name: Haythorn E 7-3	Location: Weld, CO
API: 05-123-26438	Legal: NENW 7 6N66W

Current

Proposed

Deepest Water Well (1 mile): 302'

Well History

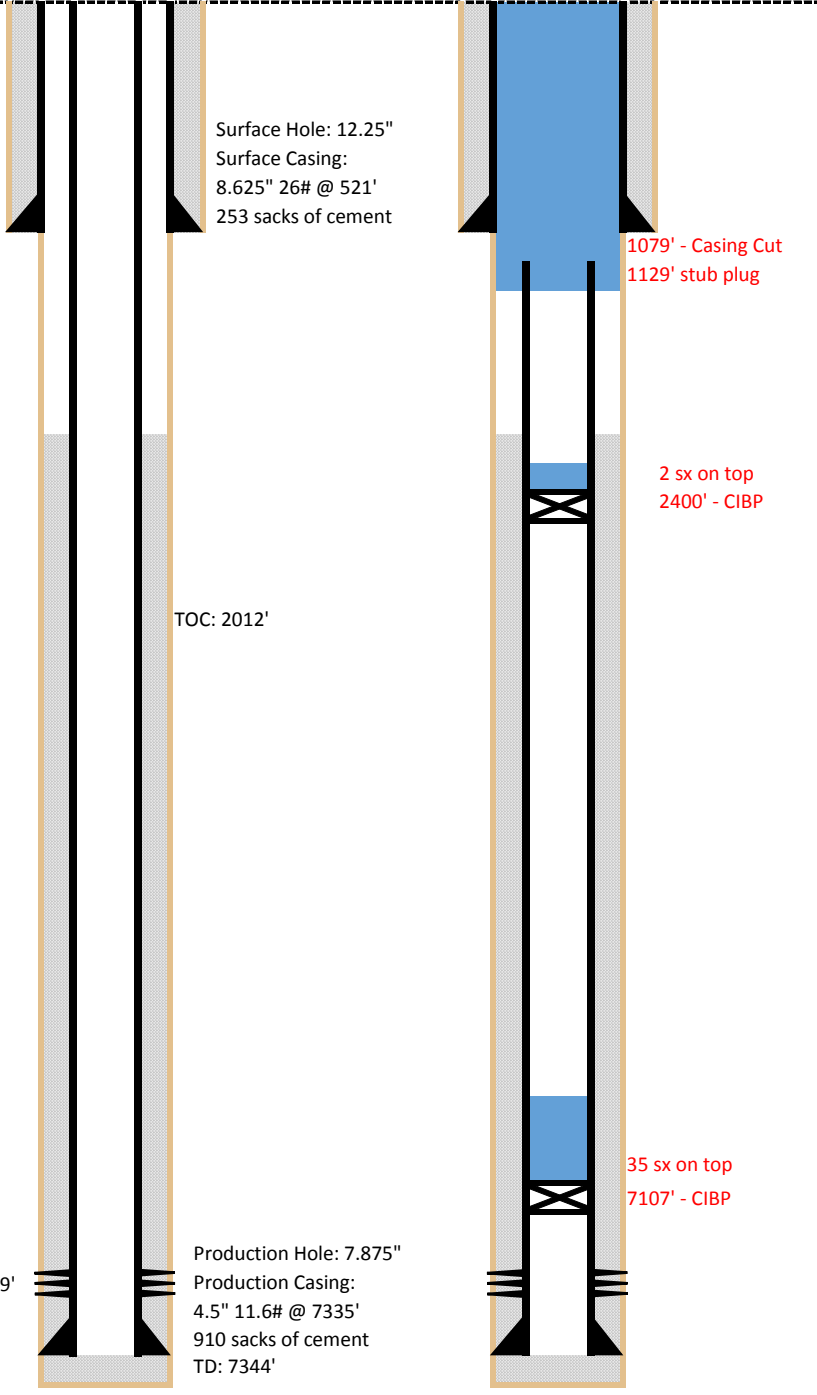
Spud Date: 11/16/2007
Perfs: Codell: 7182' - 7199'

Bradenhead History

Date of last test: N/A
Bradenhead pressure: N/A

Plugging Procedure

Set CIBP @ 7107'
Set 35 sx on top of CIBP (440' plug)
Set CIBP @ 2400'
Dump bail 2 sx on top
Cut casing @ 1079'
Pump 342 sx @ 1129' to surface



Formations	
Fox Hills (Btm)	979'
Sussex (Top)	4460'
Shannon (Top)	4986'
Niobrara (Top)	6874'
Codell (Top)	7178'

Legend	
	Existing Cement
	Cement Pumped
	CIBP
	CICR