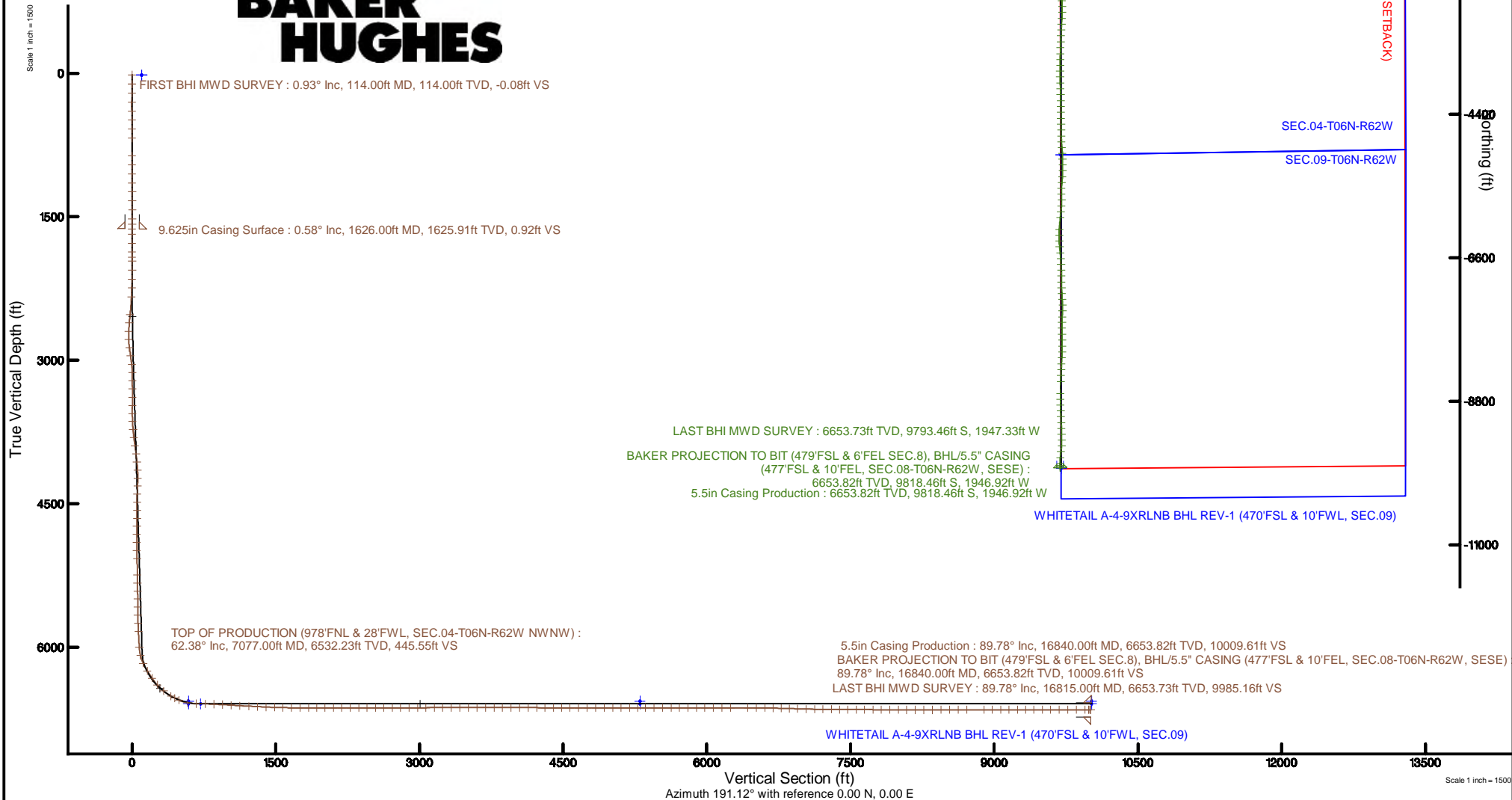


Location:	COLORADO	Slot:	SLOT#02 WHITETAIL A-4-9XRLNB (283'FNL & 1949'FWL, SEC.04)
Field:	WELD COUNTY	Well:	WHITETAIL A-4-9XRLNB
Facility:	SEC.04-T6N-R62W	Wellbore:	WHITETAIL A-4-9XRLNB PWB

Plot reference wellpath is WHITETAIL A-4-09RLNB PWP (REV:CI.0)	Grid System: NAD83 / Lambert Colorado SP, Northern Zone (501), US feet
True vertical depths are referenced to RIG (17KB) (RKB)	* = Wellpath was transformed from a different geodetic datum
Measured depths are referenced to RIG (17KB) (RKB)	North Reference: True north
RIG (17KB) (RKB) to Mean Sea Level: 4881 feet	Scale: True distance
Mean Sea Level to Ground level (At Slot: SLOTH2 WHITETAIL A-4-09RLNB (283FNL & 1949FWL, SEC.04): 0 feet	Depths are in feet
Coordinates are in feet referenced to Siot	Created by: ingrijanni on 2016-08-20
	Database: Jamie 1





Actual Wellpath Report

WHITETAIL A-4-9XRLNB AWP

Page 1 of 11



REFERENCE WELLPATH IDENTIFICATION

Operator	BONANZA CREEK OIL COMPANY	Slot	SLOT#02 WHITETAIL A-4-9XRLNB (283'FNL & 1949'FWL, SEC.04)
Area	COLORADO	Well	WHITETAIL A-4-9XRLNB
Field	WELD COUNTY	Wellbore	WHITETAIL A-4-9XRLNB AWB
Facility	SEC.04-T6N-R62W		

REPORT SETUP INFORMATION

Projection System	NAD83 / Lambert Colorado SP, Northern Zone (501), US feet	Software System	WellArchitect® 5.0
North Reference	True	User	Ingmjmr
Scale	0.999968	Report Generated	8/20/2018 at 12:08:45 PM
Convergence at slot	0.76° East	Database/Source file	Jamie 1/WHITETAIL_A-4-9XRLNB_AWP.xml

WELLPATH LOCATION

	Local coordinates		Grid coordinates		Geographic coordinates	
	North[ft]	East[ft]	Easting[US ft]	Northing[US ft]	Latitude	Longitude
Slot Location	82.98	98.85	3325260.51	1435325.13	40°31'20.920"N	104°19'47.980"W
Facility Reference Pt			3325162.77	1435240.85	40°31'20.100"N	104°19'49.260"W
Field Reference Pt			3224525.77	1254425.87	40°01'44.400"N	104°41'53.556"W

WELLPATH DATUM

Calculation method	Minimum curvature	RIG (17'KB) (RKB) to Facility Vertical Datum	4881.00ft
Horizontal Reference Pt	Slot	RIG (17'KB) (RKB) to Mean Sea Level	4881.00ft
Vertical Reference Pt	RIG (17'KB) (RKB)	RIG (17'KB) (RKB) to Ground Level at Slot (SLOT#02 WHITETAIL A-4-9XRLNB (283'FNL & 1949'FWL, SEC.04))	4881.00ft
MD Reference Pt	RIG (17'KB) (RKB)	Section Origin	N 0.00, E 0.00 ft
Field Vertical Reference	Mean Sea Level	Section Azimuth	191.12°



Actual Wellpath Report

WHITETAIL A-4-9XRLNB AWP

Page 2 of 11



REFERENCE WELLPATH IDENTIFICATION

Operator	BONANZA CREEK OIL COMPANY	Slot	SLOT#02 WHITETAIL A-4-9XRLNB (283'FNL & 1949'FWL, SEC.04)
Area	COLORADO	Well	WHITETAIL A-4-9XRLNB
Field	WELD COUNTY	Wellbore	WHITETAIL A-4-9XRLNB AWB
Facility	SEC.04-T6N-R62W		

WELLPATH DATA (183 stations) † = interpolated/extrapolated station

MD [ft]	Inclination [°]	Azimuth [°]	TVD [ft]	Vert Sect [ft]	North [ft]	East [ft]	Latitude	Longitude	DLS [°/100ft]	Comments
0.00†	0.000	287.000	0.00	0.00	0.00	0.00	40°31'20.920"N	104°19'47.980"W	0.00	
17.00	0.000	287.000	17.00	0.00	0.00	0.00	40°31'20.920"N	104°19'47.980"W	0.00	
114.00	0.930	287.000	114.00	-0.08	0.23	-0.75	40°31'20.922"N	104°19'47.990"W	0.96	FIRST BHI MWD SURVEY
208.00	0.780	325.590	207.99	-0.61	0.98	-1.84	40°31'20.930"N	104°19'48.004"W	0.62	
302.00	0.780	286.280	301.98	-1.11	1.69	-2.82	40°31'20.937"N	104°19'48.017"W	0.56	
396.00	0.250	250.340	395.97	-1.07	1.80	-3.63	40°31'20.938"N	104°19'48.027"W	0.63	
490.00	0.400	92.770	489.97	-1.01	1.71	-3.49	40°31'20.937"N	104°19'48.025"W	0.68	
584.00	0.520	124.440	583.97	-0.89	1.46	-2.81	40°31'20.934"N	104°19'48.016"W	0.29	
678.00	0.480	113.920	677.97	-0.63	1.06	-2.10	40°31'20.930"N	104°19'48.007"W	0.11	
865.00	0.220	136.230	864.96	-0.25	0.48	-1.14	40°31'20.925"N	104°19'47.995"W	0.15	
959.00	0.600	131.510	958.96	0.10	0.02	-0.64	40°31'20.920"N	104°19'47.988"W	0.41	
1053.00	0.890	127.780	1052.95	0.68	-0.75	0.30	40°31'20.913"N	104°19'47.976"W	0.31	
1147.00	0.800	103.870	1146.94	1.04	-1.36	1.52	40°31'20.907"N	104°19'47.960"W	0.38	
1239.00	1.060	108.670	1238.93	1.18	-1.78	2.95	40°31'20.902"N	104°19'47.942"W	0.29	
1333.00	0.910	127.870	1332.92	1.63	-2.52	4.36	40°31'20.895"N	104°19'47.924"W	0.38	
1427.00	0.310	54.220	1426.91	1.78	-2.83	5.15	40°31'20.892"N	104°19'47.913"W	0.93	
1521.00	0.520	84.540	1520.91	1.47	-2.64	5.79	40°31'20.894"N	104°19'47.905"W	0.32	
1578.00	0.410	43.530	1577.91	1.23	-2.47	6.18	40°31'20.896"N	104°19'47.900"W	0.60	
1682.00	0.800	69.770	1681.90	0.54	-1.95	7.12	40°31'20.901"N	104°19'47.888"W	0.45	
1776.00	1.290	287.980	1775.90	0.07	-1.39	6.73	40°31'20.906"N	104°19'47.893"W	2.11	
1870.00	1.550	255.430	1869.87	0.49	-1.39	4.49	40°31'20.906"N	104°19'47.922"W	0.89	
1924.00	1.640	264.710	1923.85	1.03	-1.64	3.02	40°31'20.904"N	104°19'47.941"W	0.51	
1964.00	1.880	272.980	1963.83	1.28	-1.66	1.79	40°31'20.904"N	104°19'47.957"W	0.87	
2057.00	1.960	286.740	2056.78	1.34	-1.12	-1.25	40°31'20.909"N	104°19'47.996"W	0.50	
2151.00	2.310	301.010	2150.71	0.54	0.32	-4.42	40°31'20.923"N	104°19'48.037"W	0.67	
2245.00	4.410	303.600	2244.54	-1.49	3.29	-9.05	40°31'20.953"N	104°19'48.097"W	2.24	
2338.00	6.770	311.670	2337.10	-5.64	8.92	-16.13	40°31'21.008"N	104°19'48.189"W	2.67	
2527.00	15.980	301.780	2522.20	-20.52	30.07	-46.63	40°31'21.217"N	104°19'48.584"W	4.96	
2620.00	19.250	293.220	2610.84	-28.25	42.87	-71.61	40°31'21.344"N	104°19'48.907"W	4.48	
2714.00	21.950	289.540	2698.83	-34.07	54.85	-102.42	40°31'21.462"N	104°19'49.306"W	3.18	



Actual Wellpath Report

WHITETAIL A-4-9XRLNB AWP

Page 3 of 11



REFERENCE WELLPATH IDENTIFICATION

Operator	BONANZA CREEK OIL COMPANY	Slot	SLOT#02 WHITETAIL A-4-9XRLNB (283'FNL & 1949'FWL, SEC.04)
Area	COLORADO	Well	WHITETAIL A-4-9XRLNB
Field	WELD COUNTY	Wellbore	WHITETAIL A-4-9XRLNB AWB
Facility	SEC.04-T6N-R62W		

WELLPATH DATA (183 stations)

MD [ft]	Inclination [°]	Azimuth [°]	TVD [ft]	Vert Sect [ft]	North [ft]	East [ft]	Latitude	Longitude	DLS [°/100ft]	Comments
2808.00	24.190	275.030	2785.38	-34.61	62.42	-138.19	40°31'21.537"N	104°19'49.769"W	6.48	
2902.00	26.540	265.400	2870.34	-26.87	62.43	-178.33	40°31'21.537"N	104°19'50.289"W	5.04	
2995.00	22.410	258.250	2954.99	-14.34	57.15	-216.42	40°31'21.485"N	104°19'50.782"W	5.46	
3090.00	22.220	267.240	3042.90	-3.00	52.60	-252.11	40°31'21.440"N	104°19'51.244"W	3.60	
3183.00	23.510	279.140	3128.64	1.86	54.70	-288.00	40°31'21.460"N	104°19'51.709"W	5.15	
3277.00	24.100	280.220	3214.64	2.81	61.08	-325.40	40°31'21.524"N	104°19'52.194"W	0.78	
3371.00	24.080	277.800	3300.45	4.22	67.09	-363.29	40°31'21.583"N	104°19'52.684"W	1.05	
3465.00	23.980	279.540	3386.31	5.86	72.86	-401.13	40°31'21.640"N	104°19'53.174"W	0.76	
3559.00	25.110	286.550	3471.83	4.50	81.71	-439.09	40°31'21.727"N	104°19'53.666"W	3.32	
3653.00	25.080	279.450	3556.98	3.19	90.66	-477.87	40°31'21.816"N	104°19'54.168"W	3.20	
3746.00	25.550	275.040	3641.05	5.89	95.66	-517.30	40°31'21.865"N	104°19'54.678"W	2.09	
3840.00	25.910	271.130	3725.74	11.59	97.84	-558.03	40°31'21.887"N	104°19'55.206"W	1.85	
3934.00	25.840	267.830	3810.32	19.86	97.47	-599.03	40°31'21.883"N	104°19'55.737"W	1.53	
4028.00	25.970	263.700	3894.88	30.73	94.44	-639.96	40°31'21.853"N	104°19'56.267"W	1.92	
4122.00	26.110	266.350	3979.34	42.17	90.86	-681.06	40°31'21.818"N	104°19'56.799"W	1.25	
4216.00	26.000	269.800	4063.80	51.48	89.48	-722.31	40°31'21.804"N	104°19'57.333"W	1.62	
4310.00	26.150	274.130	4148.24	58.05	90.90	-763.58	40°31'21.818"N	104°19'57.868"W	2.03	
4404.00	26.060	282.530	4232.68	60.06	96.87	-804.41	40°31'21.877"N	104°19'58.396"W	3.93	
4497.00	26.460	286.650	4316.09	57.56	107.24	-844.20	40°31'21.980"N	104°19'58.912"W	2.01	
4591.00	26.530	285.590	4400.21	53.90	118.88	-884.49	40°31'22.095"N	104°19'59.433"W	0.51	
4685.00	26.620	281.890	4484.29	51.98	128.86	-925.32	40°31'22.193"N	104°19'59.962"W	1.76	
4779.00	26.310	279.690	4568.44	52.22	136.71	-966.46	40°31'22.271"N	104°20'00.495"W	1.09	
4873.00	25.620	281.740	4652.95	52.52	144.35	-1006.90	40°31'22.346"N	104°20'01.018"W	1.20	
4966.00	25.850	283.340	4736.73	51.51	153.12	-1046.31	40°31'22.433"N	104°20'01.529"W	0.79	
5060.00	26.240	282.480	4821.18	50.22	162.34	-1086.54	40°31'22.524"N	104°20'02.050"W	0.58	
5154.00	26.260	282.080	4905.49	49.38	171.18	-1127.16	40°31'22.611"N	104°20'02.576"W	0.19	
5248.00	26.450	279.410	4989.72	49.65	178.95	-1168.15	40°31'22.688"N	104°20'03.106"W	1.28	
5342.00	25.930	276.690	5074.07	51.86	184.77	-1209.22	40°31'22.746"N	104°20'03.638"W	1.39	
5530.00	26.140	280.970	5243.01	55.15	197.44	-1290.71	40°31'22.871"N	104°20'04.693"W	1.01	
5624.00	26.110	277.460	5327.41	56.52	204.07	-1331.55	40°31'22.936"N	104°20'05.222"W	1.64	



Actual Wellpath Report

WHITETAIL A-4-9XRLNB AWP

Page 4 of 11



REFERENCE WELLPATH IDENTIFICATION

Operator	BONANZA CREEK OIL COMPANY	Slot	SLOT#02 WHITETAIL A-4-9XRLNB (283'FNL & 1949'FWL, SEC.04)
Area	COLORADO	Well	WHITETAIL A-4-9XRLNB
Field	WELD COUNTY	Wellbore	WHITETAIL A-4-9XRLNB AWB
Facility	SEC.04-T6N-R62W		

WELLPATH DATA (183 stations) † = interpolated/extrapolated station

MD [ft]	Inclination [°]	Azimuth [°]	TVD [ft]	Vert Sect [ft]	North [ft]	East [ft]	Latitude	Longitude	DLS [°/100ft]	Comments
5718.00	25.360	279.320	5412.09	58.47	210.01	-1371.92	40°31'22.995"N	104°20'05.745"W	1.17	
5812.00	26.250	281.390	5496.72	59.00	217.38	-1412.17	40°31'23.068"N	104°20'06.266"W	1.35	
5906.00	26.320	279.070	5581.00	59.65	224.77	-1453.13	40°31'23.141"N	104°20'06.796"W	1.10	
5999.00	25.460	278.130	5664.67	61.43	230.85	-1493.27	40°31'23.201"N	104°20'07.316"W	1.02	
6093.00	26.200	277.480	5749.27	63.80	236.41	-1533.85	40°31'23.256"N	104°20'07.842"W	0.84	
6187.00	26.250	275.770	5833.60	67.05	241.20	-1575.11	40°31'23.303"N	104°20'08.376"W	0.81	
6375.00	26.330	273.970	6002.16	76.11	248.26	-1658.07	40°31'23.373"N	104°20'09.450"W	0.43	
6469.00	27.250	255.370	6086.22	88.08	244.26	-1699.76	40°31'23.333"N	104°20'09.990"W	8.94	
6562.00	30.890	228.000	6167.85	116.56	222.81	-1738.28	40°31'23.121"N	104°20'10.489"W	14.70	
6657.00	34.990	217.640	6247.62	160.49	184.88	-1773.08	40°31'22.746"N	104°20'10.940"W	7.32	
6751.00	37.340	218.370	6323.50	209.95	141.18	-1807.24	40°31'22.314"N	104°20'11.382"W	2.54	
6845.00	44.470	215.160	6394.51	265.44	91.84	-1843.95	40°31'21.827"N	104°20'11.857"W	7.91	
6939.00	51.570	206.070	6457.42	331.24	31.71	-1879.18	40°31'21.233"N	104°20'12.313"W	10.41	
7033.00	59.300	197.240	6510.78	407.21	-40.17	-1907.42	40°31'20.522"N	104°20'12.679"W	11.28	
7077.00†	62.376	191.084	6532.23	445.55	-77.40	-1916.78	40°31'20.154"N	104°20'12.800"W	14.07	TOP OF PRODUCTION (978'FNL & 28'FWL, SEC.04-T06N-R62W NWNW)
7127.00	66.180	184.510	6553.95	490.48	-121.99	-1922.84	40°31'19.714"N	104°20'12.879"W	14.07	
7220.00	79.510	184.060	6581.32	578.51	-210.41	-1929.46	40°31'18.840"N	104°20'12.964"W	14.34	
7314.00	90.120	186.050	6589.80	671.46	-303.52	-1937.71	40°31'17.920"N	104°20'13.071"W	11.48	
7408.00	88.060	179.090	6591.30	764.35	-397.35	-1941.92	40°31'16.993"N	104°20'13.125"W	7.72	
7502.00	87.080	175.840	6595.28	855.60	-491.16	-1937.77	40°31'16.066"N	104°20'13.071"W	3.61	
7596.00	86.830	175.380	6600.28	946.05	-584.75	-1930.58	40°31'15.141"N	104°20'12.978"W	0.56	
7689.00	86.800	176.180	6605.44	1035.59	-677.36	-1923.75	40°31'14.226"N	104°20'12.890"W	0.86	
7783.00	86.700	177.840	6610.77	1126.61	-771.07	-1918.85	40°31'13.300"N	104°20'12.826"W	1.77	
7876.00	87.040	181.480	6615.85	1217.60	-863.92	-1918.30	40°31'12.383"N	104°20'12.819"W	3.93	
7970.00	86.890	182.400	6620.83	1310.27	-957.73	-1921.48	40°31'11.456"N	104°20'12.860"W	0.99	
8061.00	87.110	181.980	6625.59	1400.04	-1048.54	-1924.95	40°31'10.558"N	104°20'12.905"W	0.52	
8150.00	88.710	182.770	6628.84	1487.95	-1137.40	-1928.64	40°31'09.680"N	104°20'12.953"W	2.00	
8240.00	88.030	180.020	6631.40	1576.61	-1227.33	-1930.83	40°31'08.791"N	104°20'12.981"W	3.15	
8330.00	89.970	179.840	6632.97	1664.88	-1317.31	-1930.72	40°31'07.902"N	104°20'12.979"W	2.16	
8419.00	90.000	179.790	6632.99	1752.16	-1406.31	-1930.43	40°31'07.023"N	104°20'12.975"W	0.07	



Actual Wellpath Report

WHITETAIL A-4-9XRLNB AWP

Page 5 of 11



REFERENCE WELLPATH IDENTIFICATION

Operator	BONANZA CREEK OIL COMPANY	Slot	SLOT#02 WHITETAIL A-4-9XRLNB (283'FNL & 1949'FWL, SEC.04)
Area	COLORADO	Well	WHITETAIL A-4-9XRLNB
Field	WELD COUNTY	Wellbore	WHITETAIL A-4-9XRLNB AWB
Facility	SEC.04-T6N-R62W		

WELLPATH DATA (183 stations)

MD [ft]	Inclination [°]	Azimuth [°]	TVD [ft]	Vert Sect [ft]	North [ft]	East [ft]	Latitude	Longitude	DLS [°/100ft]	Comments
8510.00	90.030	179.740	6632.97	1841.37	-1497.31	-1930.06	40°31'06.124"N	104°20'12.971"W	0.06	
8599.00	89.970	177.870	6632.97	1928.32	-1586.29	-1928.20	40°31'05.244"N	104°20'12.946"W	2.10	
8688.00	89.970	178.050	6633.01	2014.99	-1675.23	-1925.03	40°31'04.366"N	104°20'12.905"W	0.20	
8777.00	90.060	178.120	6632.99	2101.69	-1764.18	-1922.06	40°31'03.487"N	104°20'12.867"W	0.13	
8868.00	89.820	178.190	6633.09	2190.38	-1855.13	-1919.13	40°31'02.588"N	104°20'12.829"W	0.27	
8959.00	89.970	179.260	6633.25	2279.25	-1946.11	-1917.11	40°31'01.689"N	104°20'12.802"W	1.19	
9048.00	89.970	181.040	6633.30	2366.62	-2035.10	-1917.34	40°31'00.810"N	104°20'12.805"W	2.00	
9135.00	90.000	181.740	6633.32	2452.37	-2122.08	-1919.45	40°30'59.950"N	104°20'12.833"W	0.81	
9226.00	90.180	181.100	6633.18	2542.07	-2213.05	-1921.70	40°30'59.051"N	104°20'12.862"W	0.73	
9314.00	90.030	181.590	6633.02	2628.79	-2301.03	-1923.77	40°30'58.182"N	104°20'12.888"W	0.58	
9404.00	90.090	181.100	6632.92	2717.49	-2391.00	-1925.88	40°30'57.293"N	104°20'12.916"W	0.55	
9493.00	90.180	179.650	6632.71	2804.93	-2480.00	-1926.46	40°30'56.413"N	104°20'12.923"W	1.63	
9583.00	89.970	177.870	6632.60	2892.84	-2569.97	-1924.52	40°30'55.524"N	104°20'12.898"W	1.99	
9675.00	89.660	177.060	6632.89	2982.24	-2661.88	-1920.45	40°30'54.616"N	104°20'12.845"W	0.94	
9762.00	90.650	178.640	6632.66	3066.91	-2748.81	-1917.18	40°30'53.757"N	104°20'12.803"W	2.14	
9852.00	89.850	181.360	6632.27	3155.21	-2838.80	-1917.18	40°30'52.868"N	104°20'12.803"W	3.15	
9942.00	90.220	183.770	6632.21	3244.20	-2928.71	-1921.21	40°30'51.979"N	104°20'12.855"W	2.71	
10032.00	90.000	183.170	6632.04	3333.40	-3018.54	-1926.66	40°30'51.092"N	104°20'12.925"W	0.71	
10121.00	89.880	182.690	6632.13	3421.49	-3107.42	-1931.21	40°30'50.213"N	104°20'12.984"W	0.56	
10212.00	89.970	183.070	6632.25	3511.56	-3198.31	-1935.78	40°30'49.315"N	104°20'13.043"W	0.43	
10303.00	90.120	182.350	6632.18	3601.58	-3289.21	-1940.08	40°30'48.417"N	104°20'13.099"W	0.81	
10393.00	90.030	180.990	6632.06	3690.35	-3379.17	-1942.71	40°30'47.528"N	104°20'13.132"W	1.51	
10485.00	90.030	180.890	6632.01	3780.91	-3471.15	-1944.22	40°30'46.619"N	104°20'13.152"W	0.11	
10574.00	89.970	180.270	6632.01	3868.40	-3560.15	-1945.12	40°30'45.740"N	104°20'13.163"W	0.70	
10665.00	90.000	181.390	6632.04	3957.94	-3651.14	-1946.43	40°30'44.841"N	104°20'13.180"W	1.23	
10756.00	89.880	181.190	6632.13	4047.60	-3742.12	-1948.48	40°30'43.942"N	104°20'13.207"W	0.26	
10844.00	89.850	178.820	6632.34	4133.95	-3830.11	-1948.49	40°30'43.072"N	104°20'13.207"W	2.69	
10936.00	89.880	178.010	6632.56	4223.70	-3922.07	-1945.95	40°30'42.164"N	104°20'13.174"W	0.88	
11026.00	89.850	178.200	6632.77	4311.38	-4012.02	-1942.97	40°30'41.275"N	104°20'13.135"W	0.21	
11116.00	89.910	178.910	6632.96	4399.23	-4101.99	-1940.70	40°30'40.386"N	104°20'13.106"W	0.79	



Actual Wellpath Report

WHITETAIL A-4-9XRLNB AWP

Page 6 of 11



REFERENCE WELLPATH IDENTIFICATION

Operator	BONANZA CREEK OIL COMPANY	Slot	SLOT#02 WHITETAIL A-4-9XRLNB (283'FNL & 1949'FWL, SEC.04)
Area	COLORADO	Well	WHITETAIL A-4-9XRLNB
Field	WELD COUNTY	Wellbore	WHITETAIL A-4-9XRLNB AWB
Facility	SEC.04-T6N-R62W		

WELLPATH DATA (183 stations)

MD [ft]	Inclination [°]	Azimuth [°]	TVD [ft]	Vert Sect [ft]	North [ft]	East [ft]	Latitude	Longitude	DLS [°/100ft]	Comments
11205.00	89.690	178.890	6633.27	4486.21	-4190.98	-1938.99	40°30'39.506"N	104°20'13.083"W	0.25	
11293.00	89.850	178.740	6633.62	4572.19	-4278.96	-1937.17	40°30'38.637"N	104°20'13.060"W	0.25	
11385.00	89.850	178.980	6633.86	4662.09	-4370.94	-1935.34	40°30'37.728"N	104°20'13.036"W	0.26	
11477.00	89.910	179.730	6634.05	4752.16	-4462.93	-1934.31	40°30'36.819"N	104°20'13.023"W	0.82	
11567.00	90.000	179.400	6634.12	4840.34	-4552.93	-1933.62	40°30'35.930"N	104°20'13.014"W	0.38	
11658.00	90.000	178.670	6634.12	4929.32	-4643.92	-1932.09	40°30'35.031"N	104°20'12.994"W	0.80	
11750.00	90.060	179.550	6634.08	5019.31	-4735.90	-1930.66	40°30'34.122"N	104°20'12.975"W	0.96	
11839.00	90.030	176.980	6634.01	5106.07	-4824.85	-1927.97	40°30'33.243"N	104°20'12.940"W	2.89	
11929.00	90.250	173.330	6633.79	5192.58	-4914.52	-1920.37	40°30'32.357"N	104°20'12.842"W	4.06	
12018.00	90.180	177.920	6633.45	5278.33	-5003.23	-1913.58	40°30'31.480"N	104°20'12.754"W	5.16	
12103.00	90.090	179.480	6633.25	5361.33	-5088.21	-1911.65	40°30'30.640"N	104°20'12.729"W	1.84	
12193.00	90.120	178.980	6633.09	5449.40	-5178.20	-1910.44	40°30'29.751"N	104°20'12.713"W	0.56	
12282.00	90.000	181.030	6632.99	5536.73	-5267.20	-1910.45	40°30'28.872"N	104°20'12.713"W	2.31	
12373.00	90.120	183.170	6632.90	5626.60	-5358.13	-1913.78	40°30'27.973"N	104°20'12.756"W	2.36	
12461.00	90.030	185.380	6632.78	5713.97	-5445.88	-1920.34	40°30'27.106"N	104°20'12.841"W	2.51	
12551.00	89.750	183.880	6632.96	5803.39	-5535.58	-1927.61	40°30'26.220"N	104°20'12.935"W	1.70	
12641.00	90.030	176.100	6633.13	5891.63	-5625.51	-1927.59	40°30'25.331"N	104°20'12.934"W	8.65	
12730.00	90.030	180.210	6633.08	5978.34	-5714.45	-1924.73	40°30'24.452"N	104°20'12.897"W	4.62	
12822.00	90.120	184.630	6632.96	6069.26	-5806.34	-1928.61	40°30'23.544"N	104°20'12.947"W	4.81	
12913.00	89.940	185.200	6632.91	6159.73	-5897.01	-1936.41	40°30'22.648"N	104°20'13.048"W	0.66	
13002.00	90.060	186.800	6632.91	6248.37	-5985.52	-1945.71	40°30'21.774"N	104°20'13.169"W	1.80	
13183.00	90.000	182.140	6632.82	6428.10	-6165.92	-1959.81	40°30'19.991"N	104°20'13.351"W	2.57	
13273.00	90.030	181.180	6632.80	6516.88	-6255.88	-1962.42	40°30'19.102"N	104°20'13.385"W	1.07	
13363.00	88.490	177.930	6633.96	6605.03	-6345.85	-1961.72	40°30'18.213"N	104°20'13.376"W	4.00	
13452.00	88.580	174.420	6636.23	6690.98	-6434.61	-1955.79	40°30'17.336"N	104°20'13.299"W	3.94	
13541.00	88.430	175.010	6638.56	6776.33	-6523.20	-1947.59	40°30'16.461"N	104°20'13.192"W	0.68	
13631.00	88.490	175.360	6640.98	6862.84	-6612.85	-1940.04	40°30'15.575"N	104°20'13.095"W	0.39	
13720.00	88.370	176.560	6643.41	6948.71	-6701.60	-1933.77	40°30'14.698"N	104°20'13.013"W	1.35	
13810.00	88.580	178.690	6645.81	7036.19	-6791.48	-1930.04	40°30'13.810"N	104°20'12.965"W	2.38	
13900.00	88.580	180.200	6648.04	7124.30	-6881.45	-1929.17	40°30'12.921"N	104°20'12.954"W	1.68	



Actual Wellpath Report

WHITETAIL A-4-9XRLNB AWP

Page 7 of 11



REFERENCE WELLPATH IDENTIFICATION

Operator	BONANZA CREEK OIL COMPANY	Slot	SLOT#02 WHITETAIL A-4-9XRLNB (283'FNL & 1949'FWL, SEC.04)
Area	COLORADO	Well	WHITETAIL A-4-9XRLNB
Field	WELD COUNTY	Wellbore	WHITETAIL A-4-9XRLNB AWB
Facility	SEC.04-T6N-R62W		

WELLPATH DATA (183 stations)

MD [ft]	Inclination [°]	Azimuth [°]	TVD [ft]	Vert Sect [ft]	North [ft]	East [ft]	Latitude	Longitude	DLS [°/100ft]	Comments
13990.00	89.970	179.180	6649.18	7212.50	-6971.44	-1928.69	40°30'12.031"N	104°20'12.947"W	1.92	
14080.00	89.510	177.170	6649.59	7300.21	-7061.38	-1925.82	40°30'11.143"N	104°20'12.910"W	2.29	
14169.00	89.380	176.890	6650.45	7386.53	-7150.26	-1921.21	40°30'10.264"N	104°20'12.850"W	0.35	
14257.00	89.510	175.590	6651.30	7471.58	-7238.07	-1915.44	40°30'09.397"N	104°20'12.775"W	1.48	
14347.00	89.820	178.890	6651.83	7558.93	-7327.95	-1911.11	40°30'08.509"N	104°20'12.719"W	3.68	
14436.00	89.820	182.330	6652.11	7646.43	-7416.93	-1912.05	40°30'07.629"N	104°20'12.731"W	3.87	
14526.00	89.510	182.450	6652.63	7735.38	-7506.85	-1915.81	40°30'06.741"N	104°20'12.780"W	0.37	
14611.00	89.600	181.800	6653.29	7819.34	-7591.79	-1918.96	40°30'05.901"N	104°20'12.821"W	0.77	
14701.00	89.450	179.440	6654.04	7907.82	-7681.77	-1919.93	40°30'05.012"N	104°20'12.833"W	2.63	
14793.00	89.850	179.780	6654.60	7997.97	-7773.77	-1919.31	40°30'04.103"N	104°20'12.825"W	0.57	
14882.00	89.970	177.790	6654.74	8084.91	-7862.74	-1917.42	40°30'03.224"N	104°20'12.800"W	2.24	
14973.00	89.970	179.820	6654.79	8173.81	-7953.72	-1915.52	40°30'02.325"N	104°20'12.776"W	2.23	
15064.00	89.910	182.850	6654.89	8263.48	-8044.68	-1917.64	40°30'01.426"N	104°20'12.803"W	3.33	
15155.00	90.150	183.380	6654.84	8353.59	-8135.55	-1922.59	40°30'00.528"N	104°20'12.867"W	0.64	
15246.00	90.120	182.750	6654.62	8443.69	-8226.42	-1927.45	40°29'59.630"N	104°20'12.930"W	0.69	
15337.00	90.060	182.960	6654.48	8533.75	-8317.30	-1931.98	40°29'58.732"N	104°20'12.989"W	0.24	
15427.00	90.250	182.710	6654.24	8622.81	-8407.19	-1936.43	40°29'57.844"N	104°20'13.046"W	0.35	
15517.00	90.220	182.090	6653.87	8711.77	-8497.11	-1940.20	40°29'56.955"N	104°20'13.095"W	0.69	
15700.00	90.180	180.400	6653.23	8892.05	-8680.06	-1944.18	40°29'55.148"N	104°20'13.146"W	0.92	
15790.00	90.150	179.620	6652.97	8980.37	-8770.06	-1944.20	40°29'54.258"N	104°20'13.146"W	0.87	
15879.00	89.850	178.230	6652.97	9067.36	-8859.04	-1942.53	40°29'53.379"N	104°20'13.124"W	1.60	
15969.00	89.940	177.350	6653.13	9154.93	-8948.98	-1939.06	40°29'52.490"N	104°20'13.079"W	0.98	
16058.00	90.090	177.670	6653.11	9241.43	-9037.89	-1935.19	40°29'51.612"N	104°20'13.029"W	0.40	
16148.00	90.030	177.730	6653.02	9328.98	-9127.82	-1931.58	40°29'50.723"N	104°20'12.982"W	0.09	
16237.00	89.940	178.130	6653.04	9415.63	-9216.76	-1928.36	40°29'49.844"N	104°20'12.941"W	0.46	
16327.00	89.940	178.840	6653.13	9503.45	-9306.73	-1925.98	40°29'48.955"N	104°20'12.910"W	0.79	
16416.00	90.000	178.330	6653.18	9590.33	-9395.70	-1923.78	40°29'48.076"N	104°20'12.881"W	0.58	
16503.00	90.000	183.580	6653.18	9675.93	-9482.66	-1925.23	40°29'47.217"N	104°20'12.900"W	6.03	
16594.00	89.910	188.810	6653.25	9766.57	-9573.10	-1935.05	40°29'46.323"N	104°20'13.027"W	5.75	
16685.00	89.880	183.710	6653.42	9857.21	-9663.52	-1944.97	40°29'45.430"N	104°20'13.155"W	5.60	



Actual Wellpath Report

WHITETAIL A-4-9XRLNB AWP

Page 8 of 11



REFERENCE WELLPATH IDENTIFICATION

Operator	BONANZA CREEK OIL COMPANY	Slot	SLOT#02 WHITETAIL A-4-9XRLNB (283'FNL & 1949'FWL, SEC.04)
Area	COLORADO	Well	WHITETAIL A-4-9XRLNB
Field	WELD COUNTY	Wellbore	WHITETAIL A-4-9XRLNB AWB
Facility	SEC.04-T6N-R62W		

WELLPATH DATA (183 stations)

MD [ft]	Inclination [°]	Azimuth [°]	TVD [ft]	Vert Sect [ft]	North [ft]	East [ft]	Latitude	Longitude	DLS °/100ft	Comments
16774.00	89.880	179.840	6653.61	9945.01	-9752.46	-1947.73	40°29'44.551"N	104°20'13.191"W	4.35	
16815.00	89.780	179.060	6653.73	9985.16	-9793.46	-1947.33	40°29'44.146"N	104°20'13.186"W	1.92	LAST BHI MWD SURVEY
16840.00	89.780	179.060	6653.82	10009.61	-9818.46	-1946.92	40°29'43.899"N	104°20'13.180"W	0.00	BAKER PROJECTION TO BIT (479'FSL & 6'FEL SEC.8), BHL/5.5" CASING (477'FSL & 10'FEL, SEC.08-T06N-R62W, SESE)

HOLE & CASING SECTIONS - Ref Wellbore: WHITETAIL A-4-9XRLNB AWB Ref Wellpath: WHITETAIL A-4-9XRLNB AWP

String/Diameter	Start MD [ft]	End MD [ft]	Interval [ft]	Start TVD [ft]	End TVD [ft]	Start N/S [ft]	Start E/W [ft]	End N/S [ft]	End E/W [ft]
9.625in Casing Surface	17.00	1626.00	1609.00	17.00	1625.91	0.00	0.00	-2.22	6.51
5.5in Casing Production	17.00	16840.00	16823.00	17.00	6653.82	0.00	0.00	-9818.46	-1946.92



Actual Wellpath Report

WHITETAIL A-4-9XRLNB AWP

Page 9 of 11



REFERENCE WELLPATH IDENTIFICATION

Operator	BONANZA CREEK OIL COMPANY	Slot	SLOT#02 WHITETAIL A-4-9XRLNB (283'FNL & 1949'FWL, SEC.04)
Area	COLORADO	Well	WHITETAIL A-4-9XRLNB
Field	WELD COUNTY	Wellbore	WHITETAIL A-4-9XRLNB AWB
Facility	SEC.04-T6N-R62W		

TARGETS

Name	TVD [ft]	North [ft]	East [ft]	Grid East [US ft]	Grid North [US ft]	Latitude	Longitude	Shape
SEC.04-T06N-R62W	19.00	-82.98	-98.85	3325162.77	1435240.85	40°31'20.100"N	104°19'49.260"W	polygon
SEC.09-T06N-R62W	19.00	-82.98	-98.85	3325162.77	1435240.85	40°31'20.100"N	104°19'49.260"W	polygon
WHITETAIL A-4-9XRLNB BHL (470'FSL & 10'FWL, SEC.09)	6564.00	-9827.72	-1931.29	3323459.12	1425473.11	40°29'43.807"N	104°20'12.978"W	point
WHITETAIL A-4-9XRLNB LP (470'FNL & 10'FWL, SEC.04)	6564.00	-218.91	-1944.98	3323318.65	1435080.58	40°31'18.756"N	104°20'13.165"W	point
WHITETAIL A-4-9XRLNB MID LATERAL (0'FSL & 10'FWL, SEC.04)	6564.00	-5023.58	-1934.00	3323393.02	1430276.63	40°30'31.279"N	104°20'13.018"W	point
WHITETAIL A-4-9XRLNB BHL REV-1 (470'FSL & 10'FWL, SEC.09)	6592.00	-9827.72	-1931.29	3323459.12	1425473.11	40°29'43.807"N	104°20'12.978"W	point
WHITETAIL A-4-9XRLNB LP REV-1 (470'FNL & 10'FWL, SEC.04)	6592.00	-218.92	-1944.98	3323318.66	1435080.57	40°31'18.756"N	104°20'13.165"W	point
WHITETAIL A-4-9XRLNB LP REV-2 (600'FNL & 10'FWL, SEC.04)	6592.00	-348.92	-1944.98	3323320.37	1434950.59	40°31'17.471"N	104°20'13.165"W	point
WHITETAIL A-4-9XRLNB MID LATERAL REV-1 (0'FSL & 10'FWL, SEC.04)	6592.00	-5023.58	-1934.00	3323393.02	1430276.63	40°30'31.279"N	104°20'13.018"W	point
SEC.04/09-T06N-R62W (460' SETBACK)	6628.00	-82.98	-98.85	3325162.77	1435240.85	40°31'20.100"N	104°19'49.260"W	polygon



Actual Wellpath Report

WHITETAIL A-4-9XRLNB AWP

Page 10 of 11



REFERENCE WELLPATH IDENTIFICATION

Operator	BONANZA CREEK OIL COMPANY	Slot	SLOT#02 WHITETAIL A-4-9XRLNB (283'FNL & 1949'FWL, SEC.04)
Area	COLORADO	Well	WHITETAIL A-4-9XRLNB
Field	WELD COUNTY	Wellbore	WHITETAIL A-4-9XRLNB AWB
Facility	SEC.04-T6N-R62W		

WELLPATH COMPOSITION - Ref Wellbore: WHITETAIL A-4-9XRLNB AWB Ref Wellpath: WHITETAIL A-4-9XRLNB AWP

Start MD [ft]	End MD [ft]	Positional Uncertainty Model	Log Name/Comment	Wellbore
17.00	1578.00	BHI NaviTrak (Rotating+Axial Corr)	BHI MWD NAVITRAK +ROTATING +AXAL CORR <114-1578>	WHITETAIL A-4-9XRLNB AWB
1578.00	16815.00	BHI AutoTrak Curve (Axial Corr, Short spacing)	BHI ATCURVE +AXIAL CORR+SHORT SPACING <1682-16815>	WHITETAIL A-4-9XRLNB AWB
16815.00	16840.00	Blind Drilling (std)	Projection to bit	WHITETAIL A-4-9XRLNB AWB



Actual Wellpath Report

WHITETAIL A-4-9XRLNB AWP

Page 11 of 11



REFERENCE WELLPATH IDENTIFICATION

Operator	BONANZA CREEK OIL COMPANY	Slot	SLOT#02 WHITETAIL A-4-9XRLNB (283'FNL & 1949'FWL, SEC.04)
Area	COLORADO	Well	WHITETAIL A-4-9XRLNB
Field	WELD COUNTY	Wellbore	WHITETAIL A-4-9XRLNB AWB
Facility	SEC.04-T6N-R62W		

WELLPATH COMMENTS

MD [ft]	Inclination [°]	Azimuth [°]	TVD [ft]	Comment
114.00	0.930	287.000	114.00	FIRST BHI MWD SURVEY
7077.00	62.376	191.084	6532.23	TOP OF PRODUCTION (978'FNL & 28'FWL, SEC.04-T06N-R62W NWNW)
16815.00	89.780	179.060	6653.73	LAST BHI MWD SURVEY
16840.00	89.780	179.060	6653.82	BAKER PROJECTION TO BIT (479'FSL & 6'FEL SEC.8), BHL/5.5" CASING (477'FSL & 10'FEL, SEC.08-T06N-R62W, SESE)