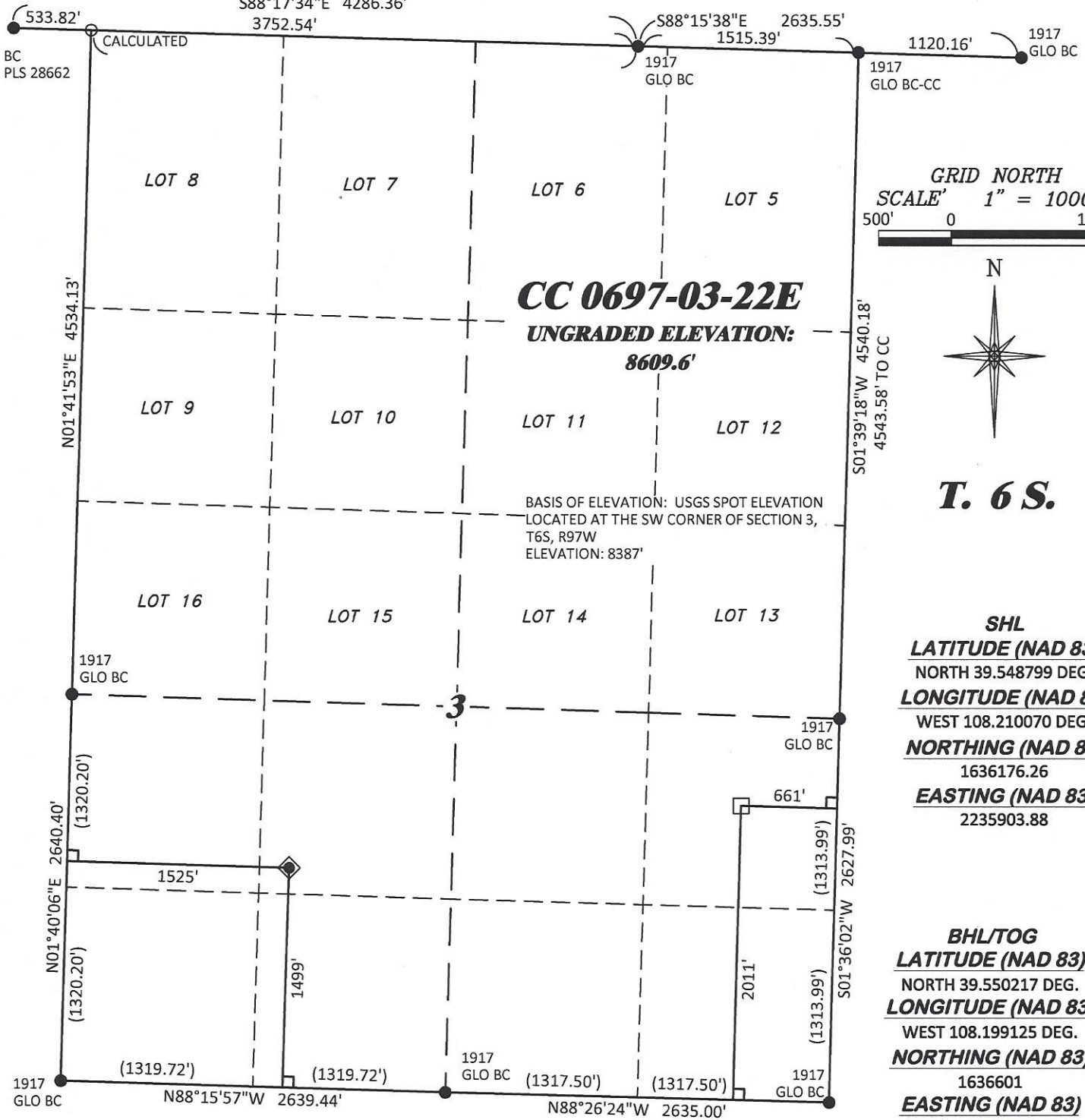


# R. 97 W.



**GRID NORTH**  
**SCALE' 1" = 1000'**  
 500' 0 1000'

**T. 6 S.**

**SHL**  
**LATITUDE (NAD 83)**  
 NORTH 39.548799 DEG.  
**LONGITUDE (NAD 83)**  
 WEST 108.210070 DEG.  
**NORTHING (NAD 83)**  
 1636176.26  
**EASTING (NAD 83)**  
 2235903.88

**BHL/TOG**  
**LATITUDE (NAD 83)**  
 NORTH 39.550217 DEG.  
**LONGITUDE (NAD 83)**  
 WEST 108.199125 DEG.  
**NORTHING (NAD 83)**  
 1636601  
**EASTING (NAD 83)**  
 2239004

**NOTES**

1. GPS OPERATOR T. SHERRILL OBSERVED A PPOF OF 1.4.
2. ALL GPS OBSERVATIONS ARE IN COMPLIANCE WITH COGCC RULE No.215.
3. EXISTING IMPROVEMENTS WITHIN 500' OF LOCATION. SEE EXHIBIT 2D.
4. SURROUNDING SURFACE USE IS NATIVE BRUSH, NON CROP RANGELAND.

**BASIS OF BEARING/DATUM**

SPCS COLORADO CENTRAL NAD 27 BASED ON GPS OBSERVATIONS AND OPUS SOLUTION ON DRG CONTROL POINT "WILLIAMS" HAVING A POSITION OF:  
 NAD83(2011)  
 LAT 39° 31' 35.18" NORTH  
 LONG 108° 12' 16.79" WEST  
 NAVD88 ELEVATION: 8618.14'

THE SOUTH LINE OF THE SW¼ OF SECTION 3, MONUMENTED BY GLO BC'S AND BEARING N 88°15'57" W.

**SURVEYOR'S STATEMENT**

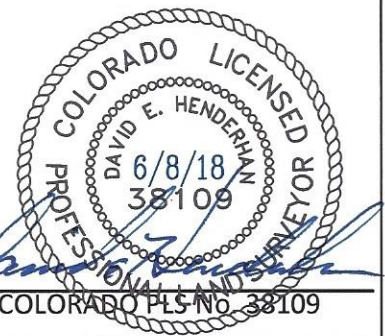
I, DAVID E. HENDERHAN, AN EMPLOYEE AND AGENT ON BEHALF OF D.R. GRIFFIN & ASSOCIATES, INC. STATE THE PLAT HEREON IS A CORRECT REPRESENTATION OF A SURVEY MADE UNDER MY SUPERVISION ON THE 25th DAY OF MAY, 2018 OF THE SHOWN CC 0697-03-22E AND THAT THE LOCATION HAS BEEN STAKED ON THE GROUND.

Notice: In accordance with Colorado State Law, any legal action based upon any defect in this survey plat must commence within three (3) years after first discovery of such defect. In no event, may any action based upon any defect in this survey plat be commenced more than ten (10) years from the date of certification shown hereon.

**LEGEND**

- ◆ WELL LOCATION
- APPROX. BHL
- └ DENOTES 90° TIE
- FOUND MONUMENT
- CALCULATED CORNER

CC 603-23-32 PAD



<p><b>DRG RIFFIN &amp; ASSOCIATES, INC.</b>        (307) 362-5028 1414 ELK ST., ROCK SPRINGS, WY 82901</p>		<p><b>PLAT OF DRILLING LOCATION IN          NESW, SECTION 3, FOR          LARAMIE ENERGY, LLC.</b></p>	
DRAWN: 6/21/2017 - TCM	SCALE: 1" = 1000'	<p><b>1499' F/SL, &amp; 1525' F/WL, SECTION 3,          T. 6 S., R. 97 W., 6TH P.M.,          GARFIELD COUNTY, COLORADO</b></p>	
REVISED: 5/29/2018 - TCM	DRG JOB No. 21294		
REVISE PAD	A4 03-22E		