

WELL	SHL FOOTAGES	SECTION	TOWNSHIP	RANGE
4-4033CB	2244' FSL 779' FWL	4	T4N	R63W
4-4033B	2237' FSL 766' FWL	4	T4N	R63W
4-4148D	2229' FSL 753' FWL	4	T4N	R63W
4-5648B	2222' FSL 740' FWL	4	T4N	R63W
4-5649C	2215' FSL 727' FWL	4	T4N	R63W
4-5764B	2207' FSL 714' FWL	4	T4N	R63W
4-5764DB	2200' FSL 701' FWL	4	T4N	R63W

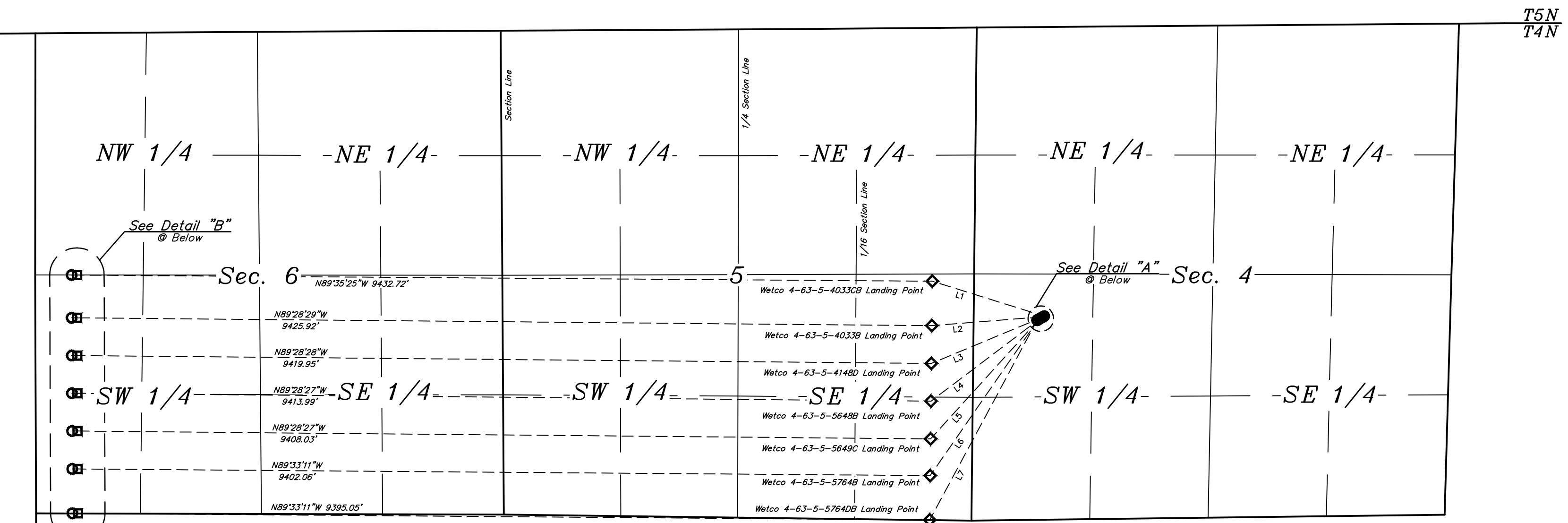
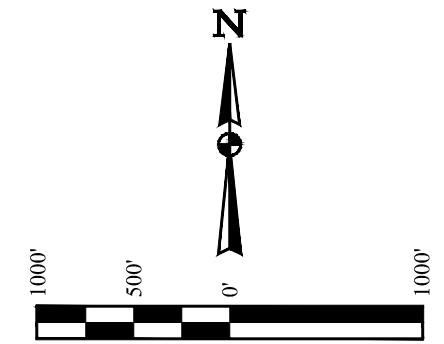
WELL	LP FOOTAGES	SECTION	TOWNSHIP	RANGE
4-4033CB	2633' FSL 460' FEL	5	T4N	R63W
4-4033B	2143' FSL 460' FEL	5	T4N	R63W
4-4148D	1727' FSL 460' FEL	5	T4N	R63W
4-5648B	1311' FSL 460' FEL	5	T4N	R63W
4-5649C	895' FSL 460' FEL	5	T4N	R63W
4-5764B	490' FSL 460' FEL	5	T4N	R63W
4-5764DB	1' FSL 460' FEL	5	T4N	R63W

WELL	BCI FOOTAGES	SECTION	TOWNSHIP	RANGE
4-4033CB	2627' FSL 460' FWL	6	T4N	R63W
4-4033B	2156' FSL 460' FWL	6	T4N	R63W
4-4148D	1740' FSL 460' FWL	6	T4N	R63W
4-5648D	1324' FSL 460' FWL	6	T4N	R63W
4-5649C	908' FSL 460' FWL	6	T4N	R63W
4-5764B	490' FSL 460' FWL	6	T4N	R63W
4-5764DB	1' FSL 460' FWL	6	T4N	R63W

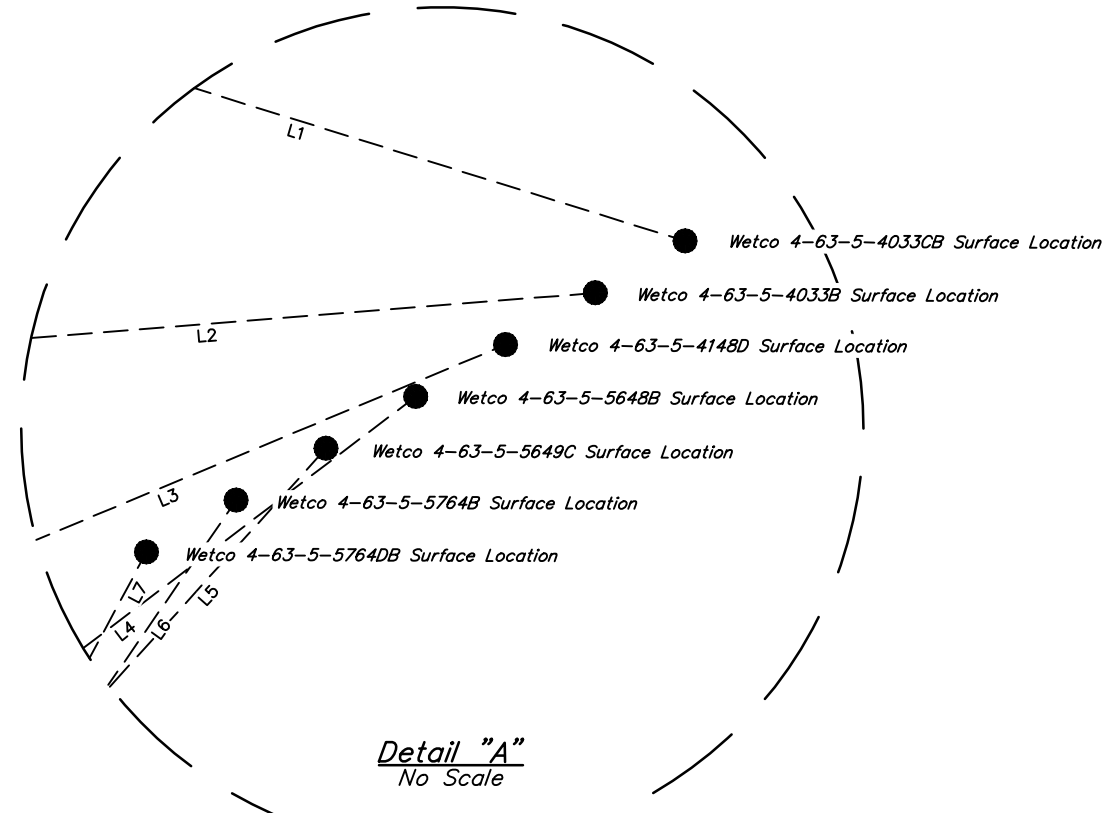
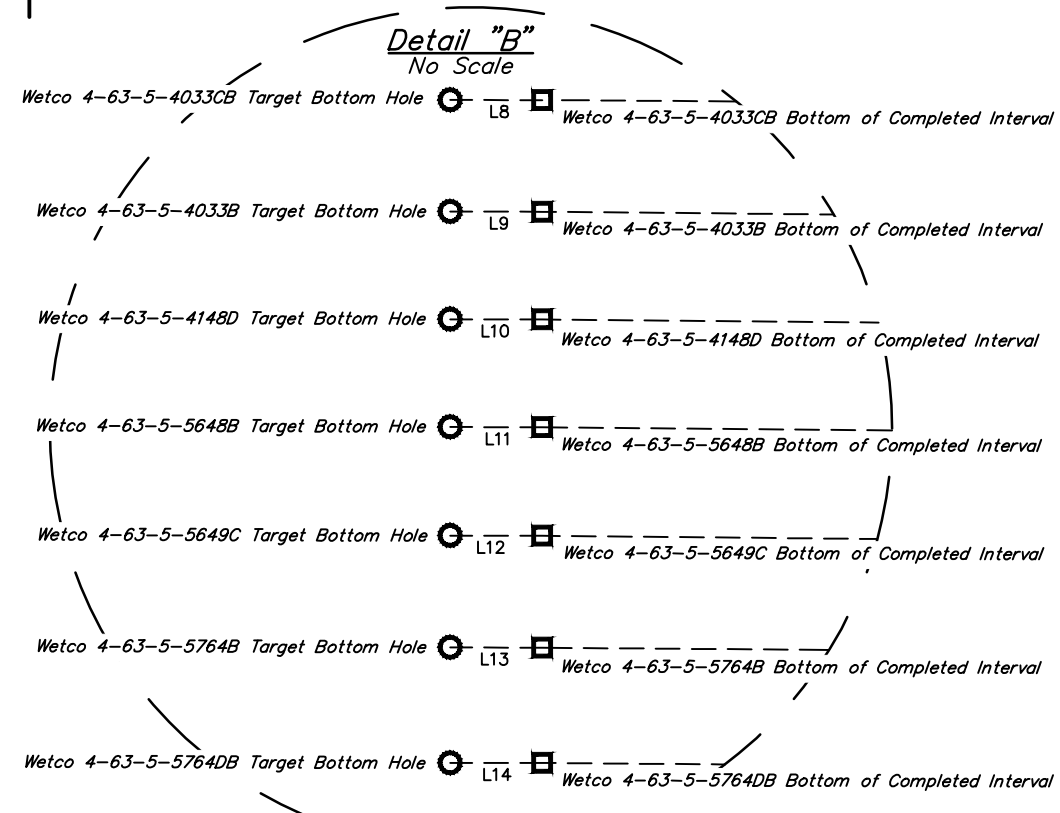
WELL	BHL FOOTAGES	SECTION	TOWNSHIP	RANGE
4-4033CB	2627' FSL 400' FWL	6	T4N	R63W
4-4033B	2156' FSL 400' FWL	6	T4N	R63W
4-4148D	1740' FSL 400' FWL	6	T4N	R63W
4-5648D	1324' FSL 400' FWL	6	T4N	R63W
4-5649C	908' FSL 400' FWL	6	T4N	R63W
4-5764B	490' FSL 400' FWL	6	T4N	R63W
4-5764DB	1' FSL 400' FWL	6	T4N	R63W

LINE	DIRECTION	LENGTH
L1	N72°41'25"W	1293.14'
L2	S85°26'45"W	1230.68'
L3	S67°26'11"W	1319.21'
L4	S52°54'22"W	1516.55'
L5	S42°13'56"W	1787.00'
L6	S34°43'22"W	2093.42'
L7	S28°16'43"W	2500.52'

LINE	DIRECTION	LENGTH
L8	N89°50'25"W	60.00'
L9	N89°50'25"W	60.00'
L10	N89°50'25"W	60.00'
L11	N89°50'25"W	60.00'
L12	N89°50'25"W	60.00'
L13	N89°50'25"W	60.00'
L14	N90°00'00"W	60.00'



R 64
R 63
W W



LEGEND:
 ● = PROPOSED WELLHEAD.
 ◆ = LANDING POINT.
 □ = BOTTOM OF COMPLETED INTERVAL.
 ○ = TARGET BOTTOM HOLE.

CERTIFICATE OF REGISTRATION
 THIS IS TO CERTIFY THAT THE ABOVE WORK WAS PREPARED AND THE NOTES OF ACTUAL SURVEYS MADE BY ME OR UNDER MY SUPERVISION AND THAT THE SAME ARE TRUE AND CORRECT TO THE BEST OF MY KNOWLEDGE AND BELIEF.
 RYAN WILLIAMS, C.M.
 REGISTERED LAND SURVEYOR
 REGISTRATION NO. 28285
 STATE OF COLORADO
 08-02-18

UJINTAH
 ENGINEERING & LAND SURVEYING
 UELS, LLC
 Corporate Office * 85 South 200 East
 Vernal, UT 84078 * (435) 789-1017
 SURVEYED BY RYAN WILLIAMS, C.M. 07-24-18 SCALE
 DRAWN BY J.U. 08-02-18 1" = 1000'
MULTI-Well PLAN