

LEGEND:

 PROPOSED LOCATION



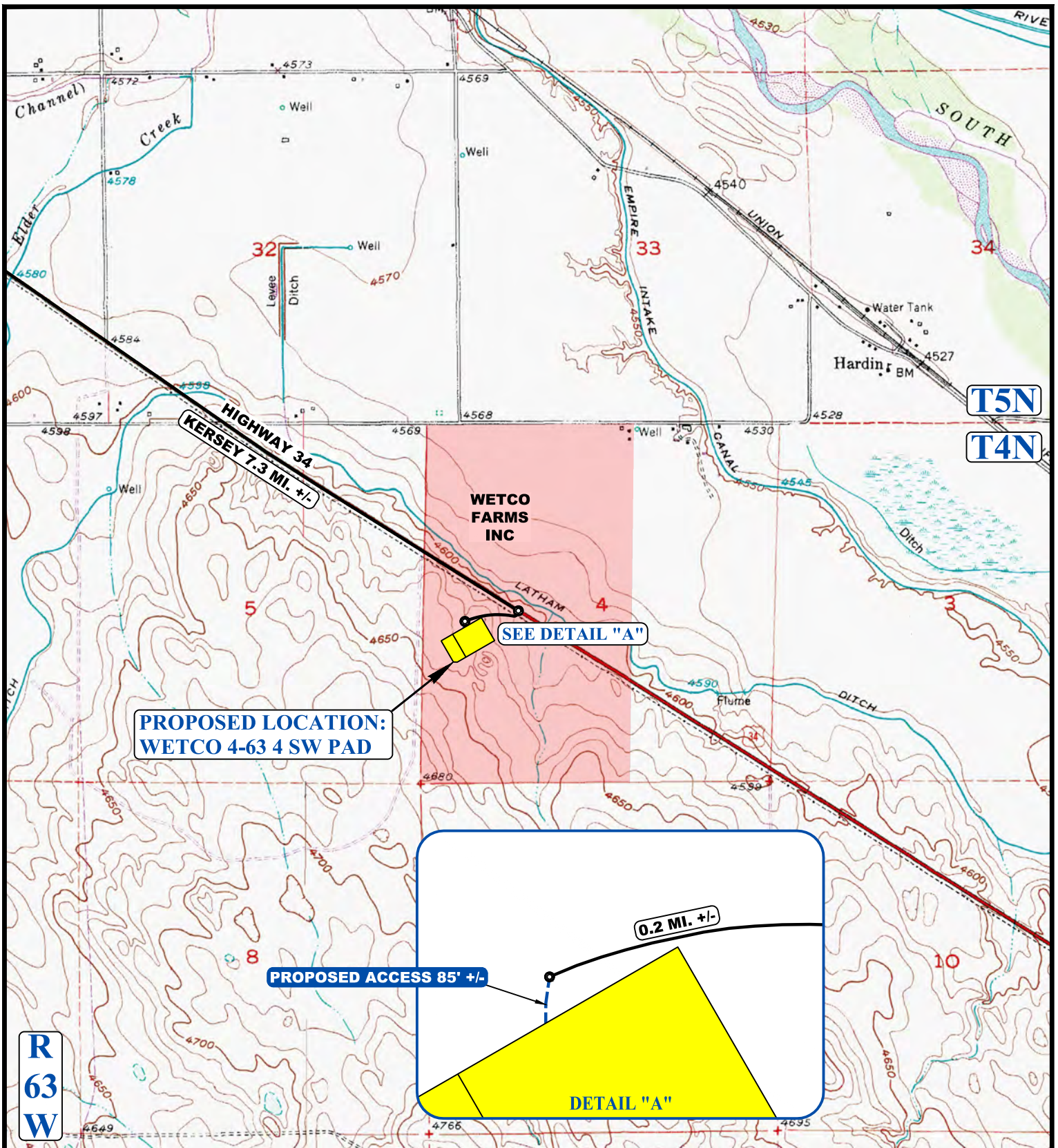
HIGHPOINT OPERATING CORPORATION

WETCO 4-63 4 SW PAD
 NW 1/4 SW 1/4, SECTION 4, T4N, R63W, 5th P.M.
 WELD COUNTY, COLORADO



UELS, LLC
 Corporate Office * 85 South 200 East
 Vernal, UT 84078 * (435) 789-1017

SURVEYED BY	R.W., C.M.	07-24-18	SCALE
DRAWN BY	R.T.	08-01-18	1 : 100,000
ACCESS ROAD MAP			TOPO A



**PROPOSED LOCATION:
WETCO 4-63 4 SW PAD**

SEE DETAIL "A"

PROPOSED ACCESS 85' +/-

0.2 MI. +/-

DETAIL "A"

NOTE: PARCEL DATA SHOWN HAS BEEN OBTAINED FROM VARIOUS SOURCES AND SHOULD BE USED FOR MAPPING, GRAPHIC AND PLANNING PURPOSES ONLY. NO WARRANTY IS MADE BY UINTAH ENGINEERING AND LAND SURVEYING (UELS) FOR ACCURACY OF THE PARCEL DATA.

LEGEND:

-  EXISTING ROAD
-  PROPOSED ROAD



HIGHPOINT OPERATING CORPORATION

WETCO 4-63 4 SW PAD
 NW 1/4 SW 1/4, SECTION 4, T4N, R63W, 5th P.M.
 WELD COUNTY, COLORADO

SURVEYED BY	R.W., C.M.	07-24-18	SCALE
DRAWN BY	R.T.	08-01-18	1 : 24,000
ACCESS ROAD MAP			TOPO B



UELS, LLC
 Corporate Office * 85 South 200 East
 Vernal, UT 84078 * (435) 789-1017