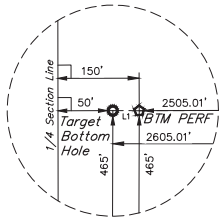
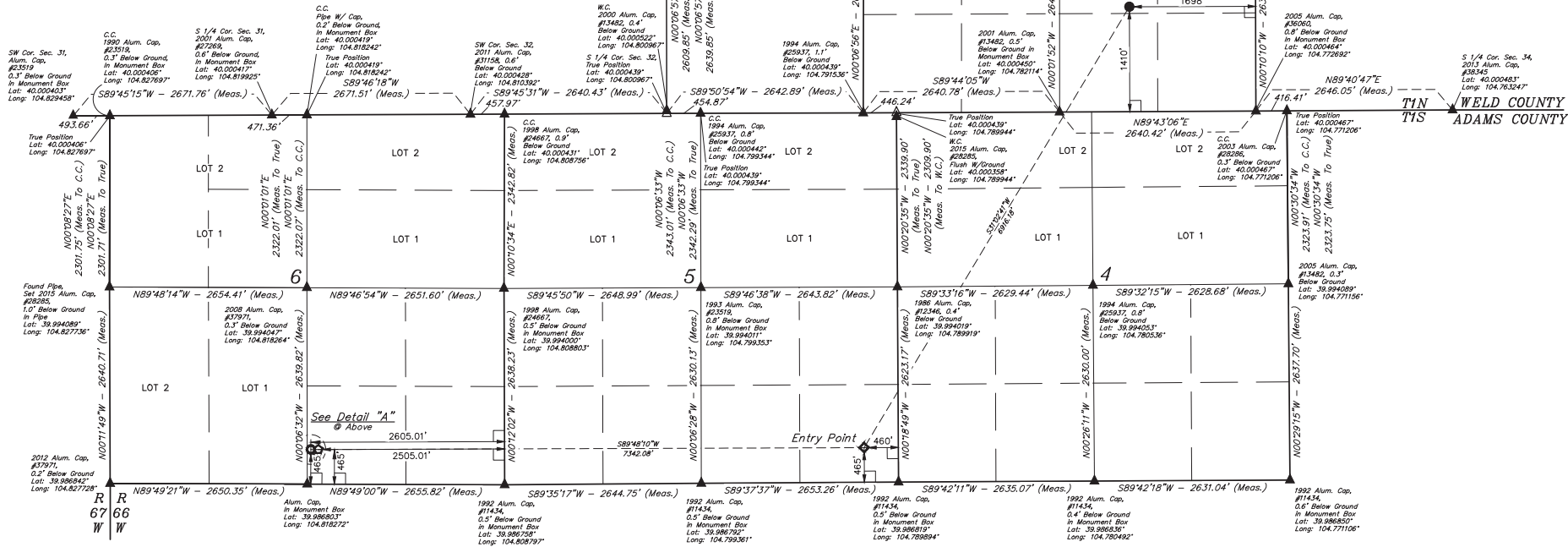


LEGEND:

- = 90° SYMBOL
 = PROPOSED WELLHEAD
 = ENTRY POINT
 = BTM PERF.
 = TARGET BOTTOM HOLE
 = SECTION CORNERS LOCATED (NAD 83)
 = SECTION CORNERS RE-ESTABLISHED (Not Set on Ground) (NAD 83)

Detail "A"
No Scale

| LINE TABLE | | |
|------------|-------------|---------|
| LINE | DIRECTION | LENGTH |
| L1 | N89°49'00"W | 100.00' |



PDOP = 1.5

| NAD 83 (SURFACE LOCATION) | NAD 83 (ENTRY POINT) | NAD 83 (BTM PERF) | NAD 83 (TARGET BOTTOM HOLE) |
|---------------------------------------|---------------------------------------|---------------------------------------|---------------------------------------|
| LATITUDE = 40°09'15.57" (04.004325) | LATITUDE = 39°59'11.37" (39.988092) | LATITUDE = 39°59'17.07" (39.988076) | LATITUDE = 39°59'11.08" (39.988077) |
| LONGITUDE = 104°46'43.50" (04.778750) | LONGITUDE = 104°47'29.54" (04.791539) | LONGITUDE = 104°49'03.85" (04.817735) | LONGITUDE = 104°49'05.13" (04.818092) |
| NAD 27 (SURFACE LOCATION) | NAD 27 (ENTRY POINT) | NAD 27 (BTM PERF) | NAD 27 (TARGET BOTTOM HOLE) |
| LATITUDE = 40°09'16.63" (04.004342) | LATITUDE = 39°59'19.39" (39.988108) | LATITUDE = 39°59'13.33" (39.988092) | LATITUDE = 39°59'14.39" (39.988093) |
| LONGITUDE = 104°46'44.61" (04.778725) | LONGITUDE = 104°47'27.64" (04.791011) | LONGITUDE = 104°49'01.94" (04.817207) | LONGITUDE = 104°49'03.23" (04.817563) |

BASIS OF BEARINGS
 BASIS OF ELEVATION
 USGS COOPERATIVE BASE NETWORK CONTROL STATION
 DESIGNATION "JR 53 5026" NGS DATA SHEET LISTS THE NAVD 88
 ELEVATION AS BEING 5028 FEET.



UEL, LLC
 Corporate Office * 85 South 200 East
 Vernal, UT 84078 * (435) 789-1017

T1N, R66W, 6th P.M.



CERTIFICATE OF RECORD
 THIS IS TO CERTIFY THAT THE ABOVE DESCRIBED SURVEY WAS MADE IN ACCORDANCE WITH THE NOTES OF ACTUAL SURVEYS MADE AND THAT THE SAME ARE TRUE AND CORRECT TO THE BEST OF THE SURVEYOR'S KNOWLEDGE AND BELIEF.
 REGISTERED LAND SURVEYOR
 STATE OF COLORADO
 12/06

REV: 3 12-01-17 K.B. (BTM PERF ADD, NAME, EP & TBH CHANGED)

GREAT WESTERN OPERATING COMPANY
 OTTESEN LE 06-370HN
 NW 1/4 SEC 14, SECTION 33, T1N, R66W, 6th P.M.
 WELD COUNTY, COLORADO

| | |
|--------------------------|----------------------|
| SURVEYED BY: GREG WEIMER | DATE: 11-03-17 |
| DRAWN BY: K.B. | DATE DRAWN: 11-11-15 |
| SCALE: 1" = 1000' | |
| WELL LOCATION PLAT | |