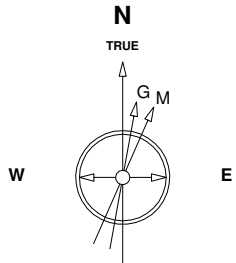


Great Western Operating Company, LLC

Location Colorado
Field Wattenburg
Installation Ottesen
Slot S01 - Ottesen LE 06-370HN
Well Ottesen LE 06-370HN
Wellbore Ottesen LE 06-370HN (PWB)

Created by admin
Date plotted 28-Dec-2017

Plot reference is Ottesen LE 06-370HN (PWB).
Ref wellpath is Ottesen LE 06-370HN (PWP#1).
Coordinates are in Feet reference S01 - Ottesen LE 06-370HN.
True Vertical Depths are reference Rig Datum.
Measured Depths are reference Rig Datum.
Rig Datum: Planned Datum #1
Rig Datum to Mean Sea Level: 5093.60 ft.
Plot North is aligned to TRUE North.

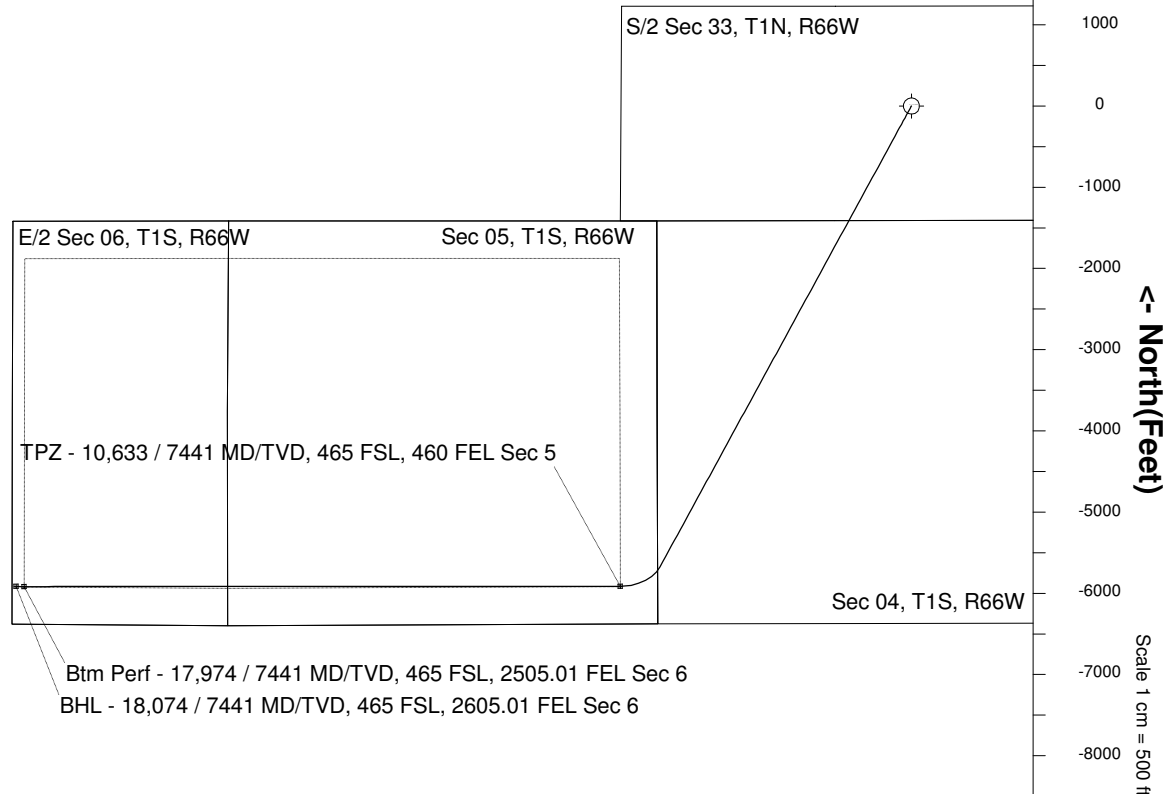
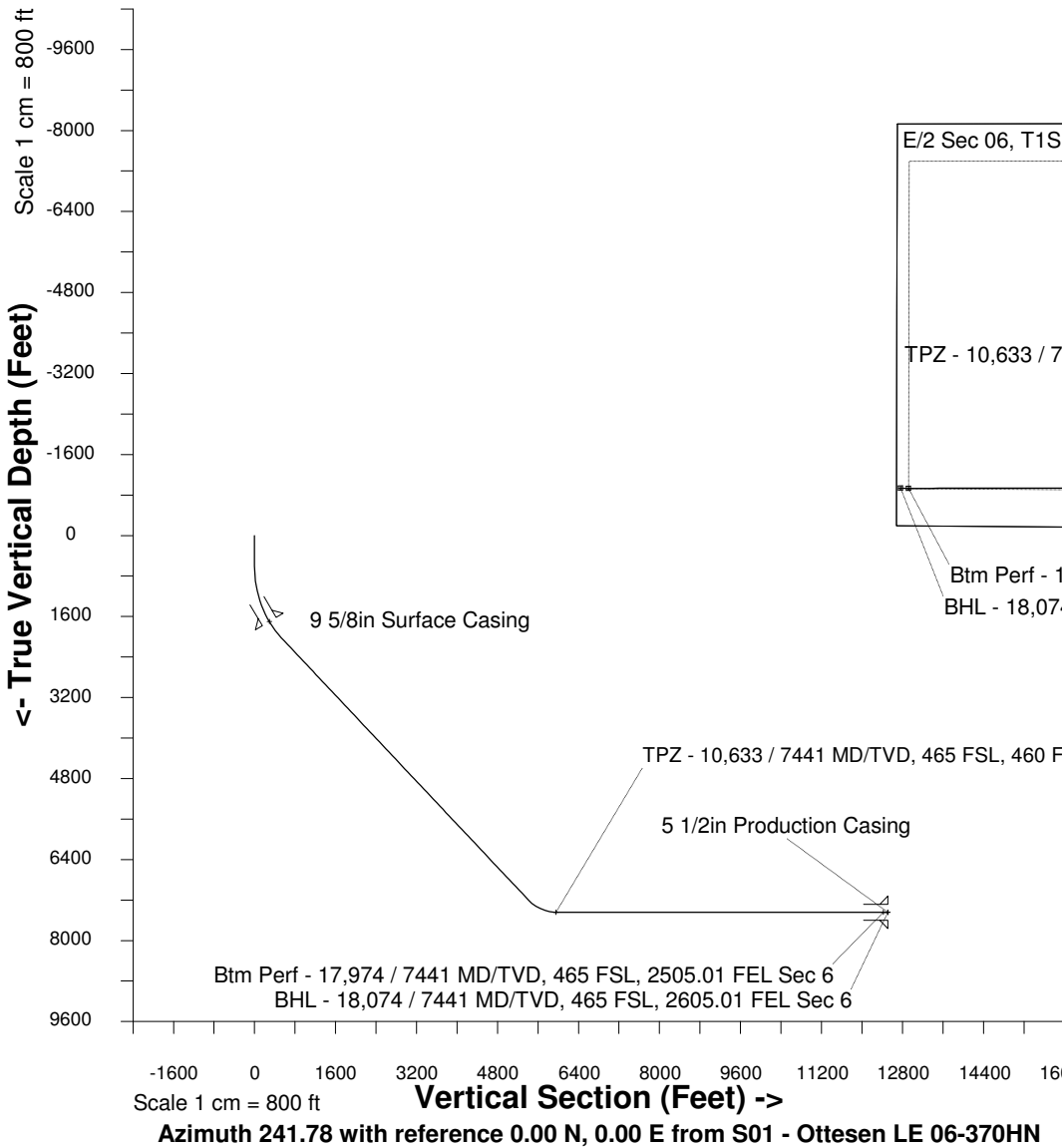


8-Aug-2016
IGRF Model [1900.0-2020.0] Dip: 66.56 deg Field: 52280.9 nT
Lat: N40 0 16.5600 Long: W104 46 43.1184 Elev: 5073.60 ft
Magnetic North is 8.28 deg East of TRUE North
To correct azimuth from Magnetic to TRUE add 8.28 deg

Scale 1 cm = 500 ft

East (Feet) ->

-12000 -11000 -10000 -9000 -8000 -7000 -6000 -5000 -4000 -3000 -2000 -1000 0 1000



WELL PROFILE DATA

Point	MD	Inc	Azi	TVD	North	East	deg/100ft	V. Sect
Tie on	0.00	0.00	0.00	0.00	S 0.00	W 0.00		-0.00
KOP	600.00	0.00	208.61	600.00	S 0.00	W 0.00	0.00	-0.00
End of Build	2212.90	48.39	208.61	2027.90	S 563.18	W 307.22	9.84	537.02
End of Hold	10005.98	48.39	208.61	7203.26	S 5678.07	W 3097.48	0.00	5414.35
Target TPZ - ... Sec 5	10633.25	90.00	269.97	7441.00	S 5913.21	W 3583.64	36.09	5953.90
Target Btm Pe... Sec 6	17973.70	90.00	269.97	7441.00	S 5916.90	W 10924.09	0.00	12423.49
End of Turn	17976.12	90.00	270.24	7441.00	S 5916.89	W 10926.51	36.09	12425.62
T.D. & Target BHL...c 6	18073.73	90.00	270.24	7441.00	S 5916.49	W 11024.13	0.00	12511.44