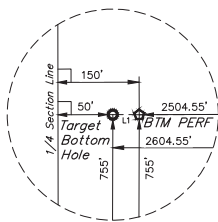
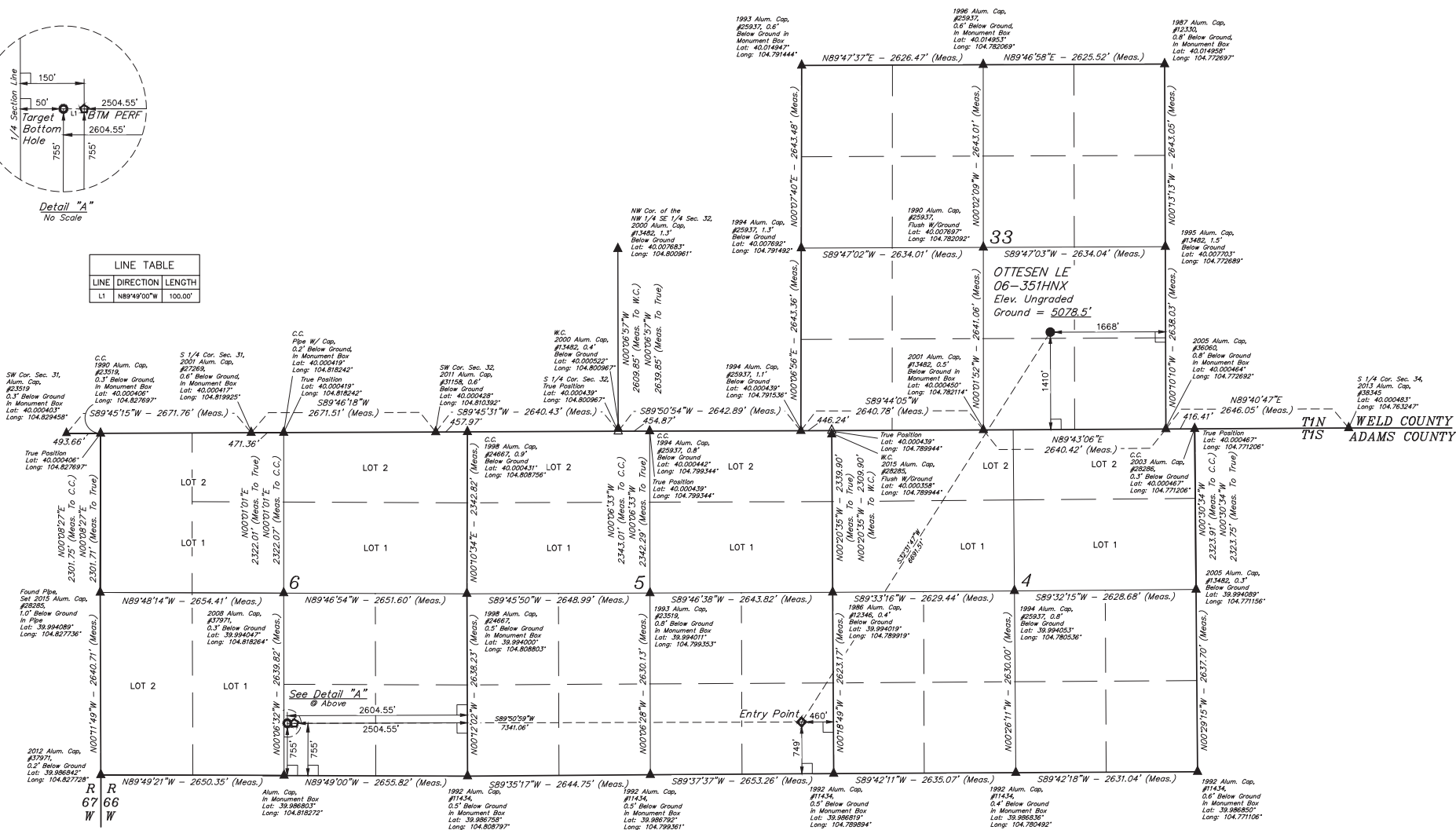


## LEGEND:

- 90° SYMBOL
- PROPOSED WELLHEAD
- ENTRY POINT
- BTM PERF.
- TARGET BOTTOM HOLE
- SECTION CORNERS LOCATED (NAD 83)
- △ SECTION CORNERS RE-ESTABLISHED (Not Set on Ground) (NAD 83)

Detail "A"  
No Scale

LINE TABLE		
LINE	DIRECTION	LENGTH
L1	N89°49'00"W	100.00'



PDOP = 1.5

NAD 83 (SURFACE LOCATION)	NAD 83 (ENTRY POINT)	NAD 83 (BTM PERF)	NAD 83 (TARGET BOTTOM HOLE)
LATITUDE = 40°00'15.5" (40.004325)	LATITUDE = 39°59'19.95" (39.988869)	LATITUDE = 39°59'19.94" (39.988872)	LATITUDE = 39°59'19.94" (39.988873)
LONGITUDE = 104°46'43.12" (104.778644)	LONGITUDE = 104°47'29.55" (104.791542)	LONGITUDE = 104°49'03.84" (104.817734)	LONGITUDE = 104°49'05.13" (104.818091)
NAD 27 (SURFACE LOCATION)	NAD 27 (ENTRY POINT)	NAD 27 (BTM PERF)	NAD 27 (TARGET BOTTOM HOLE)
LATITUDE = 40°00'15.63" (40.004342)	LATITUDE = 39°59'19.99" (39.988886)	LATITUDE = 39°59'20.00" (39.988888)	LATITUDE = 39°59'20.00" (39.988889)
LONGITUDE = 104°46'41.22" (104.778117)	LONGITUDE = 104°47'27.65" (104.791014)	LONGITUDE = 104°49'01.94" (104.817200)	LONGITUDE = 104°49'03.22" (104.817563)



**BASIS OF BEARINGS**  
BASIS OF BEARINGS IS A G.P.S. OBSERVATION

**BASIS OF ELEVATION**  
USGS COOPERATIVE BASE NETWORK CONTROL STATION,  
DESIGNATION "JR 53 5026", NGS DATA SHEET LISTS THE NAVD 88  
ELEVATION AS BEING 5028 FEET.



UINTELL, LLC  
Corporate Office \* 85 South 200 East  
Vernal, UT 84078 \* (435) 789-1017



REV: 3 12-01-17 K.B. (BTM PERF ADD, NAME, EP &amp; TBH CHANGED)

**GREAT WESTERN OPERATING COMPANY**  
OTTESSEN LE 06-351HNX  
NW 1/4 SEC 33, T1N, R66W, 6th P.M.  
WELD COUNTY, COLORADO

SURVEYED BY: DALLAS NIELSEN, C.M.	DATE: 06-30-16
DRAWN BY: K.B.	DATE DRAWN: 11-11-15
SCALE: 1" = 1000'	
WELL LOCATION PLAT	

