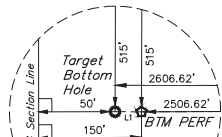


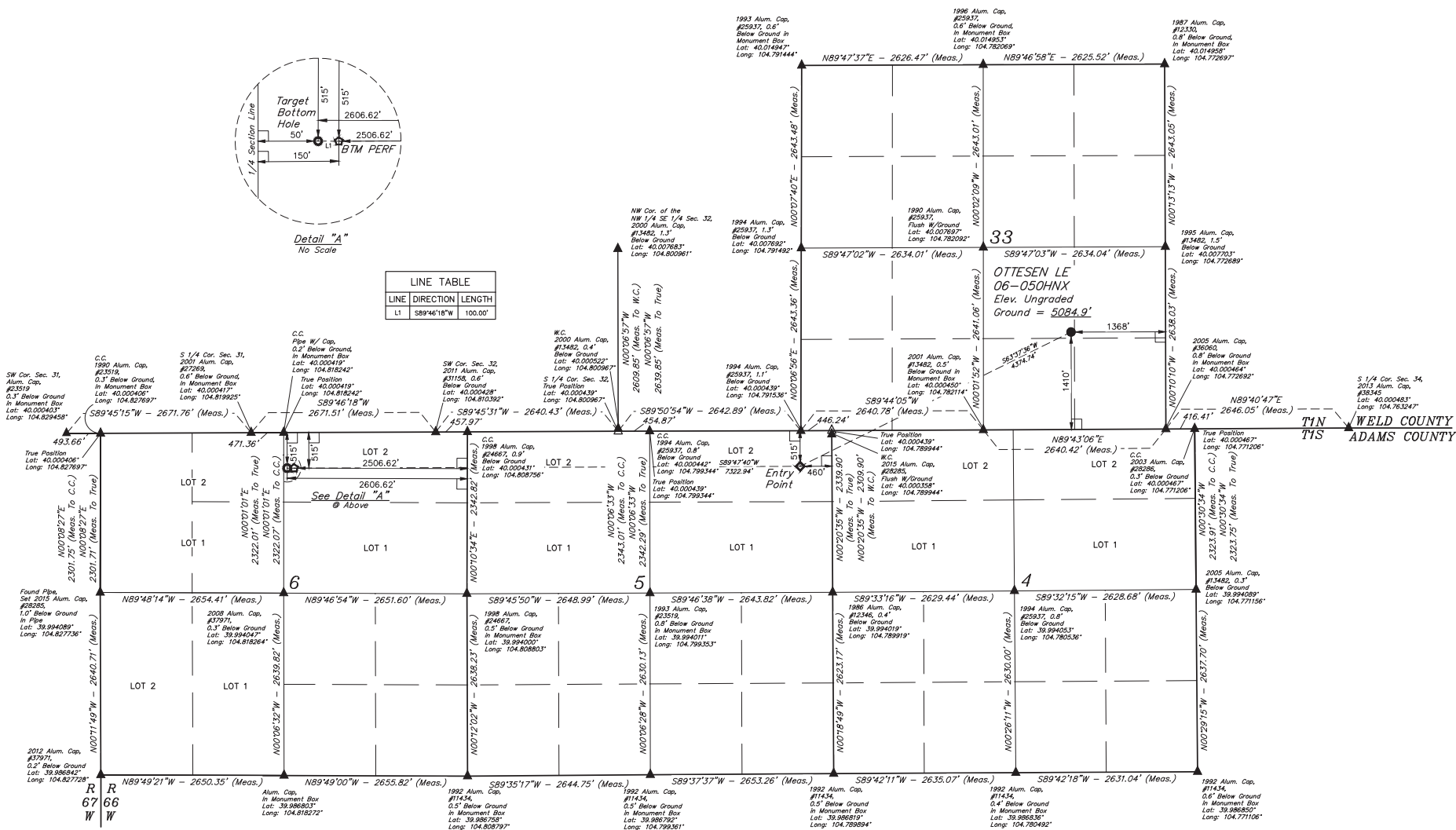
LEGEND:

- 90° SYMBOL
- PROPOSED WELLHEAD
- ENTRY POINT
- BTM PERF
- TARGET BOTTOM HOLE
- SECTION CORNERS LOCATED (NAD 83)
- △ SECTION CORNERS RE-ESTABLISHED (Not Set on Ground) (NAD 83)



Detail "A"
No Scale

LINE TABLE		
LINE	DIRECTION	LENGTH
L1	S89°46'18"W	100.00'



PDOP = 1.4

NAD 83 (SURFACE LOCATION)	NAD 83 (ENTRY POINT)	NAD 83 (BTM PERF)	NAD 83 (TARGET BOTTOM HOLE)
LATITUDE = 40°09'15.58" (40.004338)	LATITUDE = 39°59'56.49" (39.999025)	LATITUDE = 39°59'56.42" (39.999007)	LATITUDE = 39°59'56.42" (39.999006)
LONGITUDE = 104°46'39.36" (104.777572)	LONGITUDE = 104°47'29.69" (104.791581)	LONGITUDE = 104°49'03.76" (104.817172)	LONGITUDE = 104°49'05.05" (104.818068)
NAD 27 (SURFACE LOCATION)	NAD 27 (ENTRY POINT)	NAD 27 (BTM PERF)	NAD 27 (TARGET BOTTOM HOLE)
LATITUDE = 40°09'15.63" (40.004342)	LATITUDE = 39°59'56.53" (39.999042)	LATITUDE = 39°59'56.48" (39.999023)	LATITUDE = 39°59'56.48" (39.999022)
LONGITUDE = 104°46'37.37" (104.777047)	LONGITUDE = 104°47'27.79" (104.791053)	LONGITUDE = 104°49'01.86" (104.817183)	LONGITUDE = 104°49'03.15" (104.817540)



BASIS OF BEARINGS
BASIS OF BEARINGS IS A G.P.S. OBSERVATION
BASIS OF ELEVATION
USGS COOPERATIVE BASE NETWORK CONTROL STATION,
DESIGNATION "JR 53 5026", NGS DATA SHEET LISTS THE NAVD 88
ELEVATION AS BEING 5028 FEET.



UELS, LLC
Corporate Office * 85 South 200 East
Vernal, UT 84078 * (435) 789-1017



REV: 4 12-01-17 K.B. (BTM PERF ADD, NAME, EP & TBH CHANGED)

GREAT WESTERN OPERATING COMPANY
OTTESEN LE 06-050HXX
NW 1/4 SEC 33, T1N, R66W, 6th P.M.
WELD COUNTY, COLORADO

SURVEYED BY: DALLAS NIELSEN, C.M.	DATE: 06-30-16
DRAWN BY: K.B.	DATE DRAWN: 11-11-15
SCALE: 1" = 1000'	
WELL LOCATION PLAT	