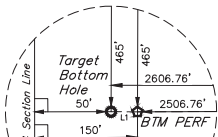


LEGEND:

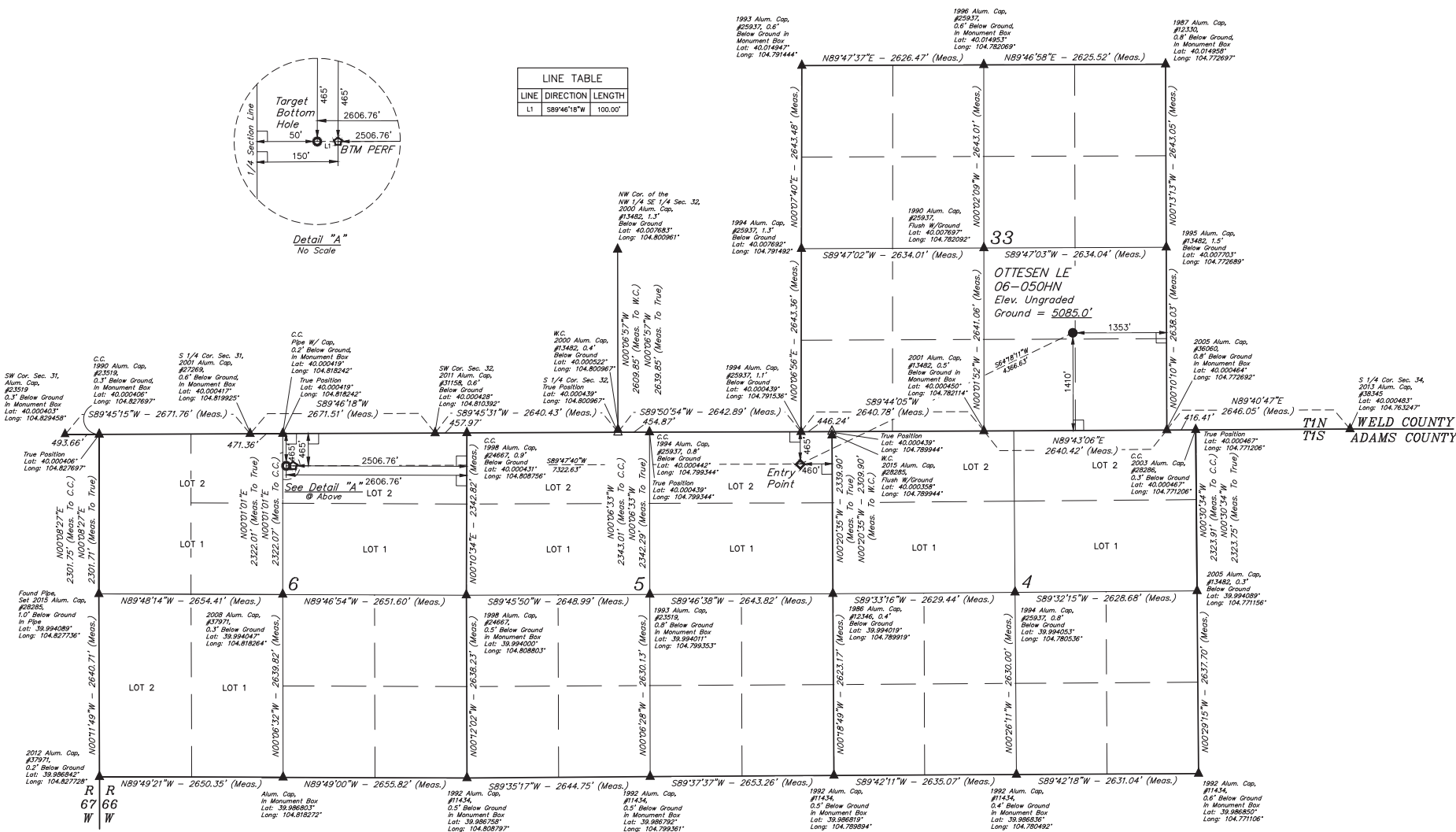
- 90° SYMBOL
 PROPOSED WELLHEAD
 ENTRY POINT
 BTM PERF
 TARGET BOTTOM HOLE
 SECTION CORNERS LOCATED (NAD 83)
 SECTION CORNERS RE-ESTABLISHED (Not Set on Ground) (NAD 83)



Detail "A"
No Scale

T1N, R66W, 6th P.M.

LINE TABLE		
LINE	DIRECTION	LENGTH
L1	S89°46'18"W	100.00'



PDOP = 1.4

NAD 83 (SURFACE LOCATION)	NAD 83 (ENTRY POINT)	NAD 83 (BTM PERF)	NAD 83 (TARGET BOTTOM HOLE)
LATITUDE = 40°09'13.58" (40.1538)	LATITUDE = 39°59'56.98" (39.999161)	LATITUDE = 39°59'56.92" (39.999144)	LATITUDE = 39°59'56.92" (39.999143)
LONGITUDE = 104°46'39.67" (104.777519)	LONGITUDE = 104°47'29.69" (104.791581)	LONGITUDE = 104°49'03.76" (104.817711)	LONGITUDE = 104°49'05.04" (104.818068)
NAD 27 (SURFACE LOCATION)	NAD 27 (ENTRY POINT)	NAD 27 (BTM PERF)	NAD 27 (TARGET BOTTOM HOLE)
LATITUDE = 40°09'13.63" (40.1538)	LATITUDE = 39°59'57.04" (39.999178)	LATITUDE = 39°59'56.98" (39.999160)	LATITUDE = 39°59'56.97" (39.999160)
LONGITUDE = 104°46'37.18" (104.776994)	LONGITUDE = 104°47'27.79" (104.791053)	LONGITUDE = 104°49'01.86" (104.817183)	LONGITUDE = 104°49'03.14" (104.817540)



BASIS OF BEARINGS
 BASIS OF ELEVATION
 USGS COOPERATIVE BASE NETWORK CONTROL STATION,
 DESIGNATION "JR 53 5026", NGS DATA SHEET LISTS THE NAVD 88
 ELEVATION AS BEING 5028 FEET.



UELS, LLC
 Corporate Office * 85 South 200 East
 Vernal, UT 84078 * (435) 789-1017



REV: 4 12-01-17 K.B. (BTM PERF ADD, NAME, EP & TBH CHANGED)

GREAT WESTERN OPERATING COMPANY
 OTTESEN LE 06-050HN
 NW 1/4 SE 1/4, SECTION 33, T1N, R66W, 6th P.M.
 WELD COUNTY, COLORADO

SURVEYED BY: DALLAS NIELSEN, C.M.	DATE: 06-30-16
DRAWN BY: K.B.	DATE DRAWN: 11-11-15
SCALE: 1" = 1000'	
WELL LOCATION PLAT	