

8-Aug-2016  
IGRF Model [1900.0-2020.0] Dip: 66.56 deg Field: 52280.9 nT  
Lat: N40 0 16.5600 Long: W104 46 43.1184 Elev: 5073.60 ft  
Magnetic North is 8.28 deg East of TRUE North  
To correct azimuth from Magnetic to TRUE add 8.28 deg

# Great Western Operating Company, LLC

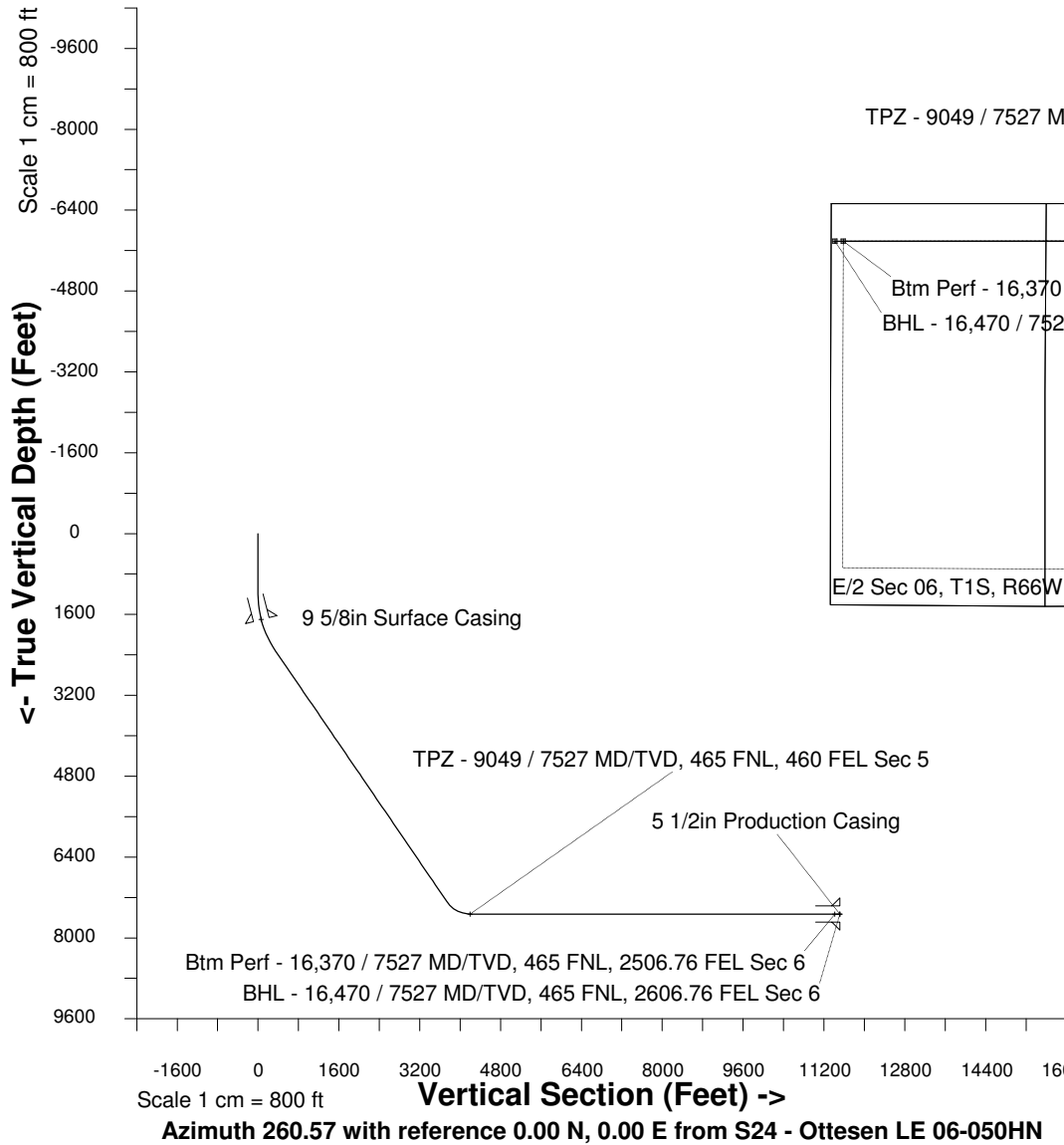
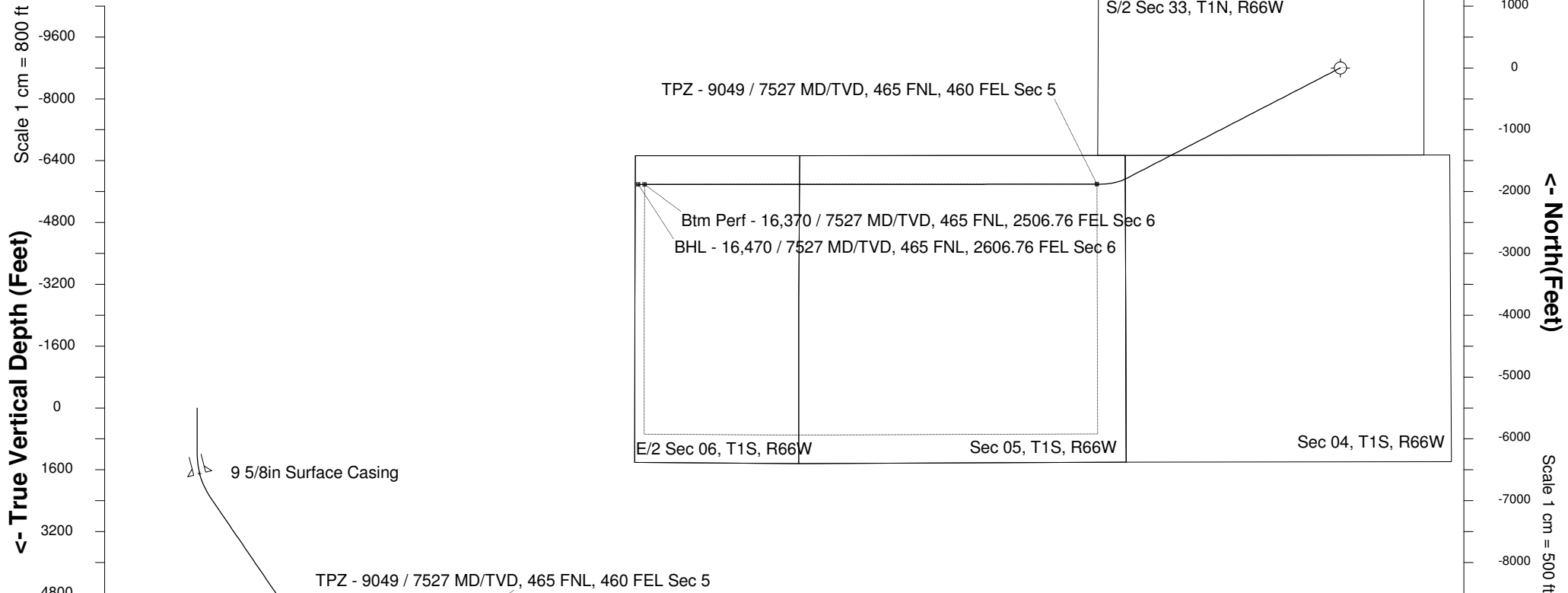
Location	Colorado	Slot	S24 - Ottesen LE 06-050HN
Field	Wattenburg	Well	Ottesen LE 06-050HN
Installation	Ottesen	Wellbore	Ottesen LE 06-050HN (PWB)

Created by	admin
Date plotted	28-Dec-2017
Plot reference is Ottesen LE 06-050HN (PWB).	
Ref wellpath is Ottesen LE 06-050HN (PWP#1).	
Coordinates are in Feet reference S24 - Ottesen LE 06-050HN.	
True Vertical Depths are reference Rig Datum.	
Measured Depths are reference Rig Datum.	
Rig Datum: Planned Datum #1	
Rig Datum to Mean Sea Level: 5093.60 ft.	
Plot North is aligned to TRUE North.	

Scale 1 cm = 500 ft

East (Feet) ->

-15000 -14000 -13000 -12000 -11000 -10000 -9000 -8000 -7000 -6000 -5000 -4000 -3000 -2000 -1000 0 1000 2000



WELL PROFILE DATA								
Point	MD	Inc	Azi	TVD	North	East	deg/100ft	V. Sect
Tie on	0.00	0.00	0.00	0.00	S 0.00	W 0.00		-0.00
KOP	1200.00	0.00	242.70	1200.00	S 0.00	W 0.00	0.00	-0.00
End of Build	2389.74	35.69	242.70	2314.27	S 164.52	W 318.79	9.84	341.43
End of Hold	8514.80	35.69	242.70	7288.82	S 1803.33	W 3494.40	0.00	3742.58
Target TPZ - ... Sec 5	9048.99	90.00	269.97	7527.00	S 1881.96	W 3939.71	36.09	4194.75
Target Btm Pe... Sec 6	16369.76	90.00	269.97	7527.00	S 1885.91	W 11260.48	0.00	11417.30
End of Turn	16371.15	90.00	269.82	7527.00	S 1885.91	W 11261.87	36.09	11418.67
T.D. & Target BHL... c 6	16469.78	90.00	269.82	7527.00	S 1886.23	W 11360.50	0.00	11516.02