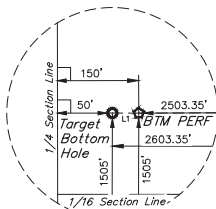
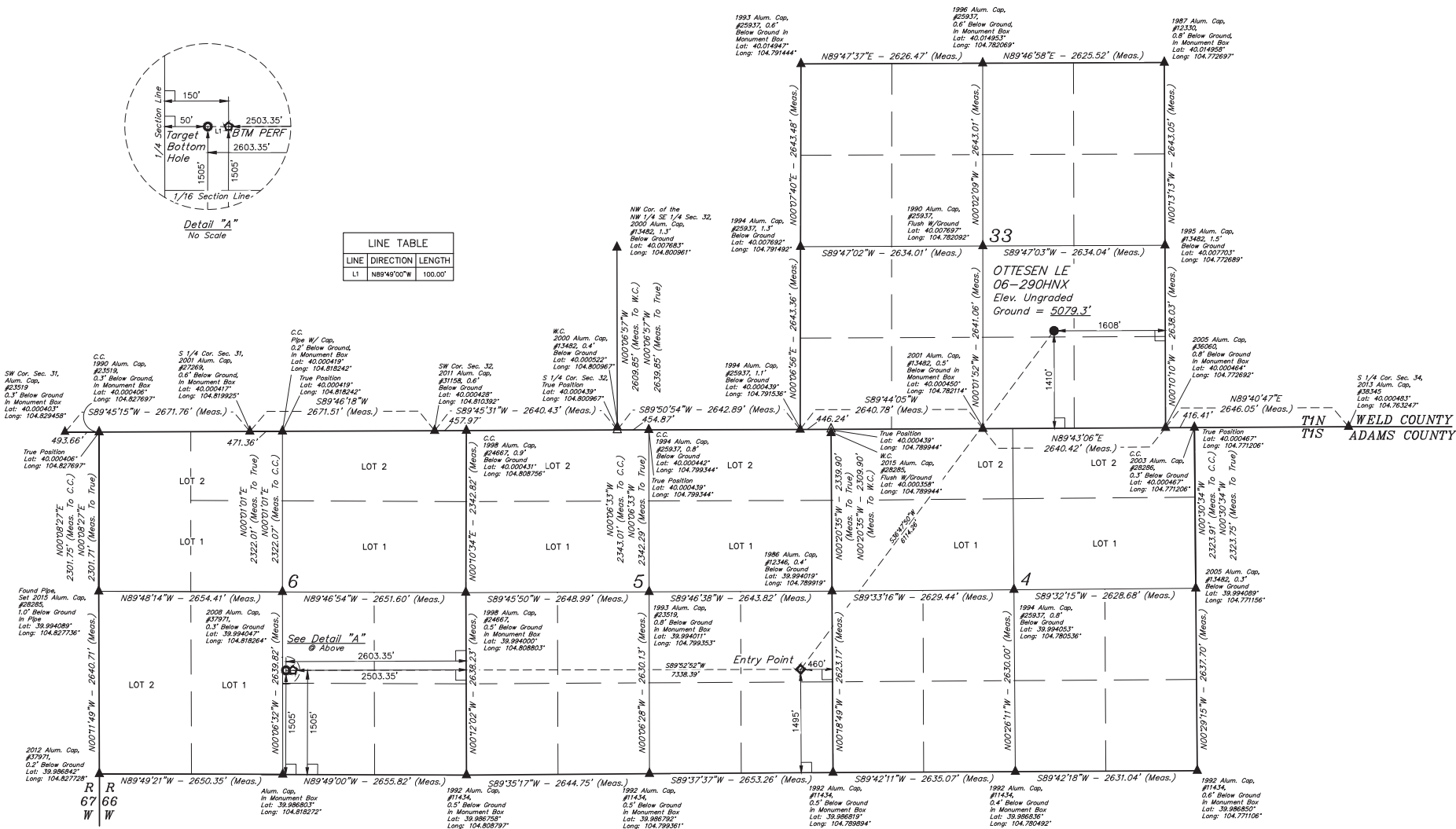


## LEGEND:

- 90° SYMBOL  
 PROPOSED WELLHEAD  
 ENTRY POINT  
 BTM PERF.  
 TARGET BOTTOM HOLE  
 SECTION CORNERS LOCATED (NAD 83)  
 SECTION CORNERS RE-ESTABLISHED (Not Set on Ground) (NAD 83)

Detail "A"  
No Scale

LINE TABLE	
LINE	DIRECTION LENGTH
L1	N89°49'00"W 100.00'



PDOP = 1.5

NAD 83 (SURFACE LOCATION)	NAD 83 (ENTRY POINT)	NAD 83 (BTM PERF)	NAD 83 (TARGET BOTTOM HOLE)
LATITUDE = 40°09'15.5" (40.004325)	LATITUDE = 39°59'27.36" (39.990917)	LATITUDE = 39°59'27.35" (39.990930)	LATITUDE = 39°59'27.35" (39.990932)
LONGITUDE = 104°46'42.35" (104.778431)	LONGITUDE = 104°47'29.58" (104.791550)	LONGITUDE = 104°49'03.84" (104.817732)	LONGITUDE = 104°49'05.12" (104.818089)
NAD 27 (SURFACE LOCATION)	NAD 27 (ENTRY POINT)	NAD 27 (BTM PERF)	NAD 27 (TARGET BOTTOM HOLE)
LATITUDE = 40°09'15.63" (40.004342)	LATITUDE = 39°59'27.36" (39.990933)	LATITUDE = 39°59'27.41" (39.990946)	LATITUDE = 39°59'27.41" (39.990948)
LONGITUDE = 104°46'40.45" (104.777903)	LONGITUDE = 104°47'27.68" (104.791022)	LONGITUDE = 104°49'01.94" (104.817204)	LONGITUDE = 104°49'03.22" (104.817561)



BASIS OF BEARINGS  
 BASIS OF ELEVATION  
 USGS COOPERATIVE BASE NETWORK CONTROL STATION,  
 DESIGNATION "JR 53 5026", NGS DATA SHEET LISTS THE NAVD 88  
 ELEVATION AS BEING 5028 FEET.



UELS, LLC  
 Corporate Office \* 85 South 200 East  
 Vernal, UT 84078 \* (435) 789-1017



CERTIFICATE OF RECORD  
 THIS IS TO CERTIFY THAT THE ABOVE DESCRIBED SURVEY WAS MADE IN ACCORDANCE WITH THE  
 NOTES OF ACTUAL SURVEYS MADE AND THAT THE SAME ARE TRUE AND CORRECT TO THE BEST OF  
 KNOWLEDGE AND BELIEF.  
 REGISTERED LAND SURVEYOR  
 STATE OF COLORADO  
 12/06  
 12/06

REV: 3 12-01-17 K.B. (BTM PERF ADD, NAME, EP &amp; TBH CHANGED)

GREAT WESTERN OPERATING COMPANY  
 OTTESEN LE 06-290HNX  
 NW 1/4 SEC 33, T1N, R66W, 6th P.M.  
 WELD COUNTY, COLORADO

SURVEYED BY: DALLAS NIELSEN, C.M.	DATE: 06-30-16
DRAWN BY: K.B.	DATE DRAWN: 11-11-15
SCALE: 1" = 1000'	
WELL LOCATION PLAT	