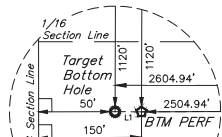


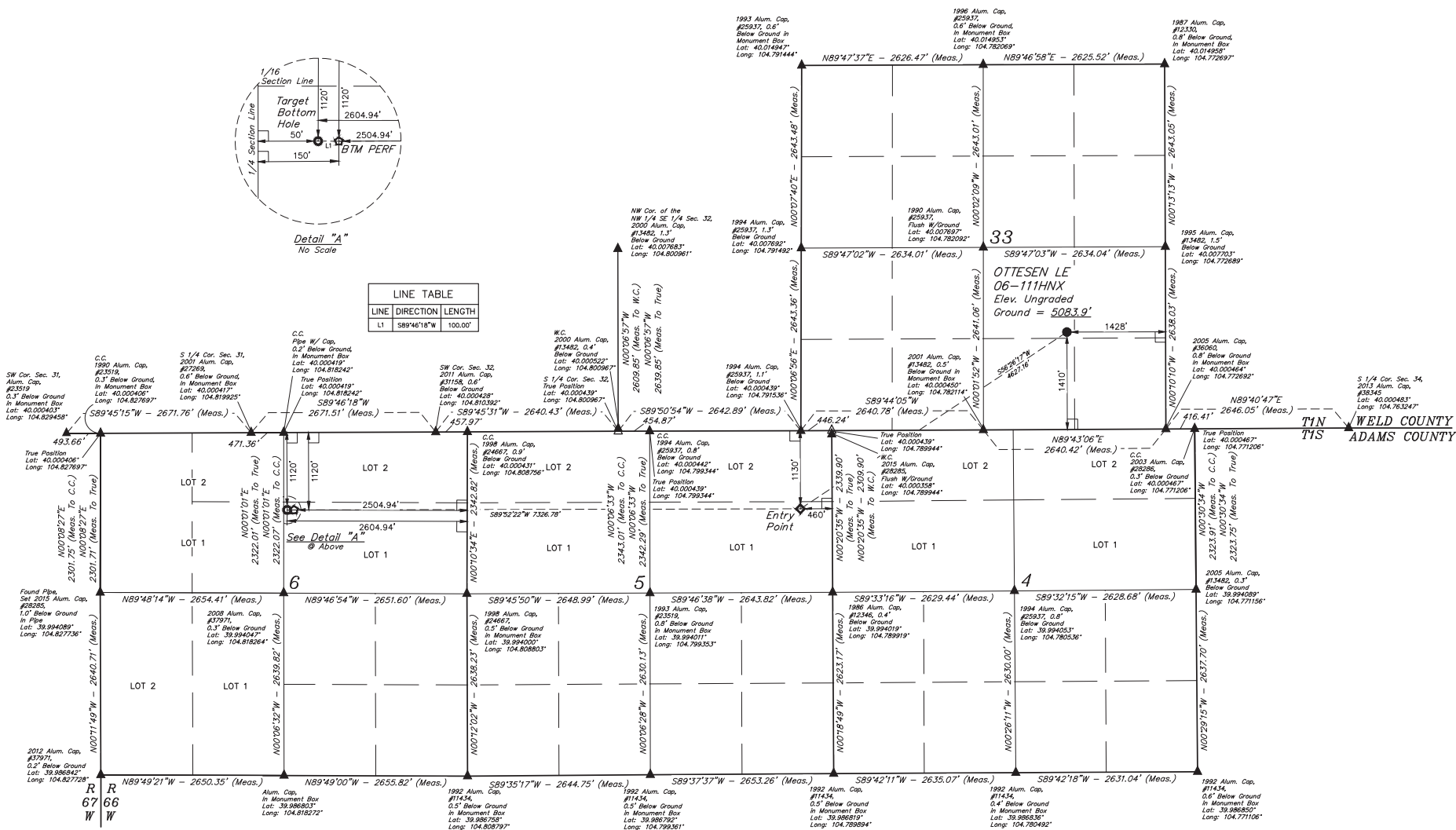
## LEGEND:

- 90° SYMBOL
- PROPOSED WELLHEAD
- ENTRY POINT
- BTM PERF
- TARGET BOTTOM HOLE
- SECTION CORNERS LOCATED (NAD 83)
- △ SECTION CORNERS RE-ESTABLISHED (Not Set on Ground) (NAD 83)

T1N, R66W, 6th P.M.

Detail "A"  
No Scale

LINE TABLE		
LINE	DIRECTION	LENGTH
L1	S89°46'18"W	100.00'



PDOP = 1.4

NAD 83 (SURFACE LOCATION)	NAD 83 (ENTRY POINT)	NAD 83 (BTM PERF)	NAD 83 (TARGET BOTTOM HOLE)
LATITUDE = 40°09'15.5" (40.004325)	LATITUDE = 39°59'50.41" (39.997336)	LATITUDE = 39°59'50.45" (39.997346)	LATITUDE = 39°59'50.44" (39.997346)
LONGITUDE = 104°46'40.03" (104.777786)	LONGITUDE = 104°47'29.66" (104.791572)	LONGITUDE = 104°49'03.78" (104.817718)	LONGITUDE = 104°49'05.07" (104.818075)
NAD 27 (SURFACE LOCATION)	NAD 27 (ENTRY POINT)	NAD 27 (BTM PERF)	NAD 27 (TARGET BOTTOM HOLE)
LATITUDE = 40°09'15.63" (40.004342)	LATITUDE = 39°59'50.41" (39.997353)	LATITUDE = 39°59'50.50" (39.997362)	LATITUDE = 39°59'50.50" (39.997362)
LONGITUDE = 104°46'38.14" (104.777261)	LONGITUDE = 104°47'27.77" (104.791047)	LONGITUDE = 104°49'01.88" (104.817190)	LONGITUDE = 104°49'03.17" (104.817546)



BASIS OF BEARINGS  
BASIS OF ELEVATION  
USGS COOPERATIVE BASE NETWORK CONTROL STATION,  
DESIGNATION "JR 53 5026", NGS DATA SHEET LISTS THE NAVD 88  
ELEVATION AS BEING 5028 FEET.



UELS, LLC  
Corporate Office \* 85 South 200 East  
Vernal, UT 84078 \* (435) 789-1017



REV: 4 12-01-17 K.B. (BTM PERF ADD, NAME, EP &amp; TBH CHANGED)

GREAT WESTERN OPERATING COMPANY

OTTESSEN LE 06-111HNX  
NW 1/4 SEC 33, T1N, R66W, 6th P.M.  
WELD COUNTY, COLORADO

SURVEYED BY: DALLAS NIELSEN, C.M.	DATE: 06-30-16
DRAWN BY: K.B.	DATE DRAWN: 11-11-15
SCALE: 1" = 1000'	

WELL LOCATION PLAT