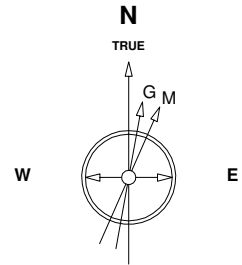


Great Western Operating Company, LLC

Location Colorado
Field Wattenburg
Installation Ottesen
Slot S20 - Ottesen LE 06-111HN
Well Ottesen LE 06-111HN
Wellbore Ottesen LE 06-111HN (PWB)

Created by admin
Date plotted 28-Dec-2017
Plot reference is Ottesen LE 06-111HN (PWB).
Ref wellpath is Ottesen LE 06-111HN (PWP#1).
Coordinates are in Feet reference S20 - Ottesen LE 06-111HN.
True Vertical Depths are reference Rig Datum.
Measured Depths are reference Rig Datum.
Rig Datum: Planned Datum #1
Rig Datum to Mean Sea Level: 5093.60 ft.
Plot North is aligned to TRUE North.

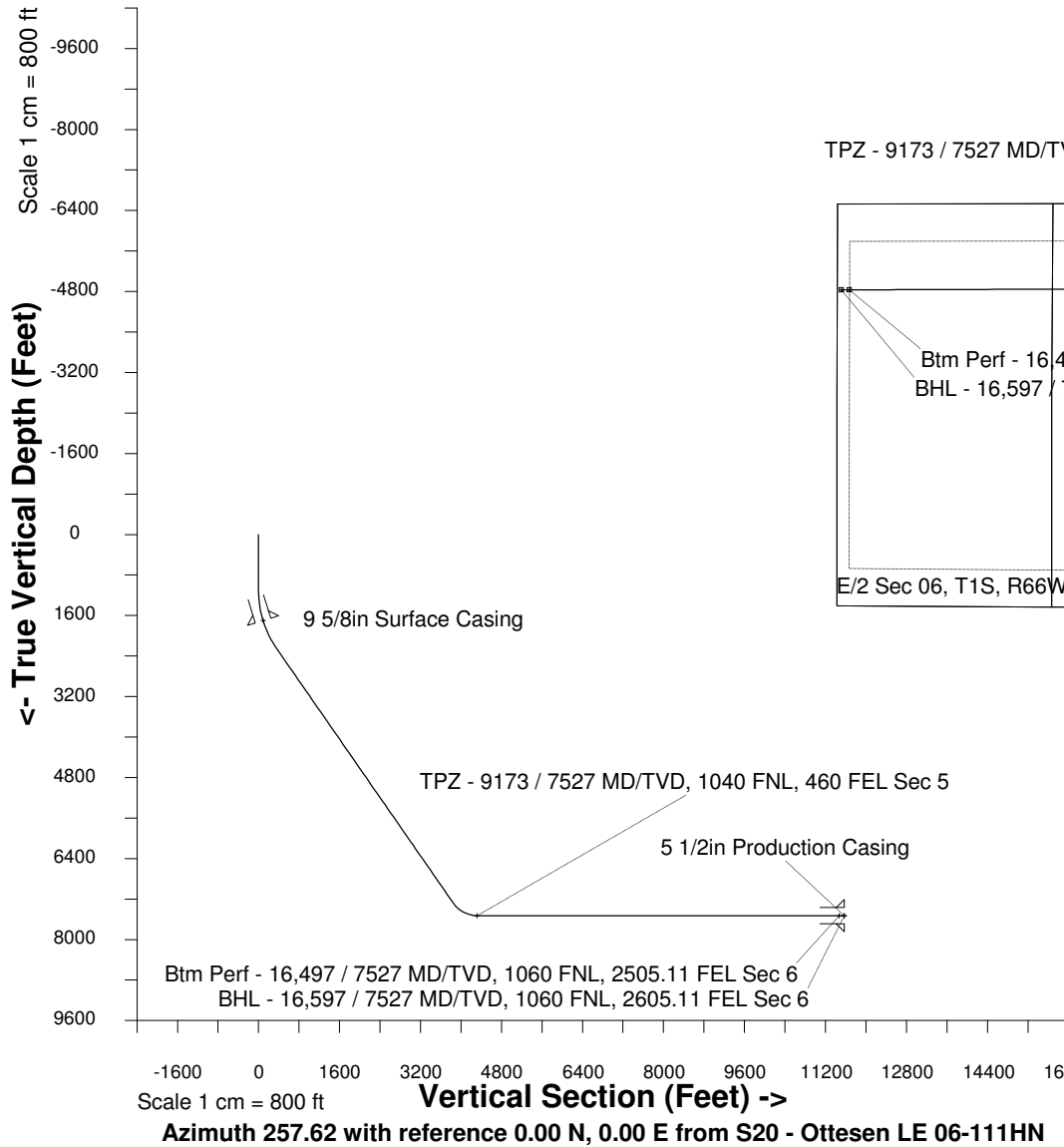
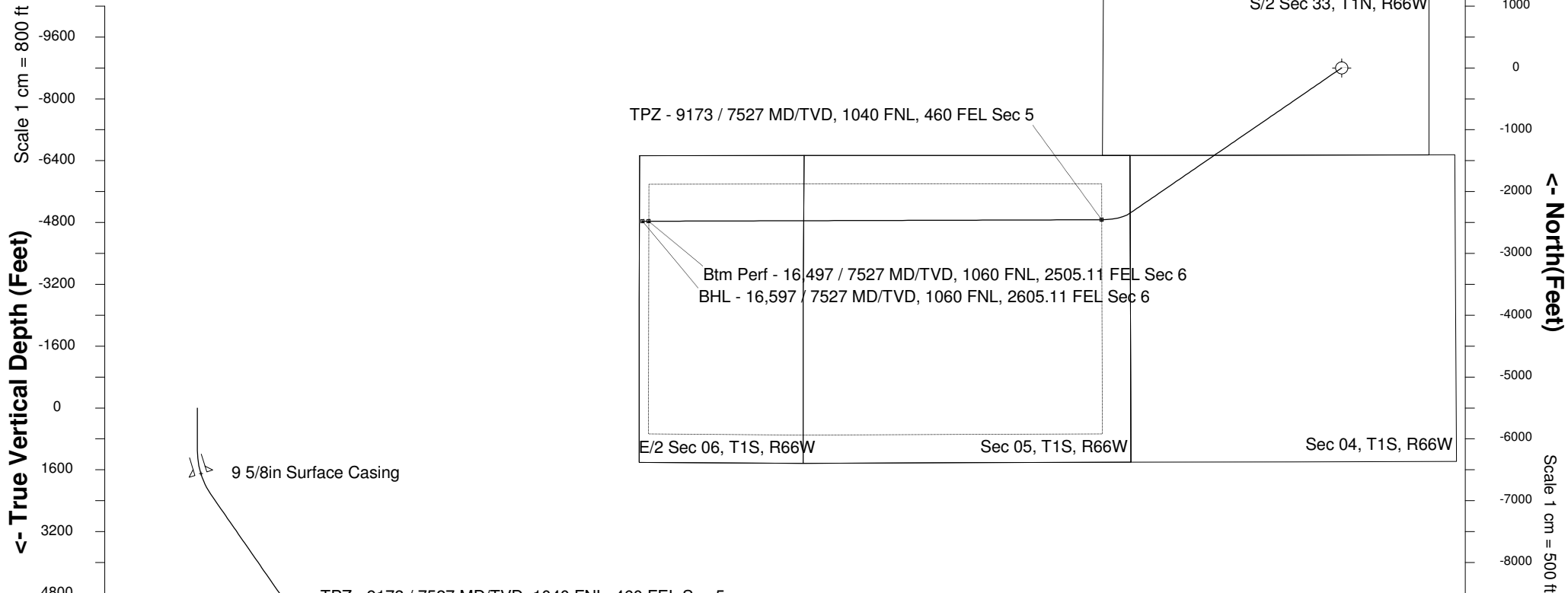


8-Aug-2016
IGRF Model [1900.0-2020.0] Dip: 66.56 deg Field: 52280.9 nT
Lat: N40 0 16.5600 Long: W104 46 43.1184 Elev: 5073.60 ft
Magnetic North is 8.28 deg East of TRUE North
To correct azimuth from Magnetic to TRUE add 8.28 deg

Scale 1 cm = 500 ft

East (Feet) ->

-15000 -14000 -13000 -12000 -11000 -10000 -9000 -8000 -7000 -6000 -5000 -4000 -3000 -2000 -1000 0 1000 2000



WELL PROFILE DATA

Point	MD	Inc	Azi	TVD	North	East	deg/100ft	V. Sect
Tie on	0.00	0.00	0.00	0.00	S 0.00	W 0.00		-0.00
KOP	1100.00	0.00	235.53	1100.00	S 0.00	W 0.00	0.00	-0.00
End of Build	2327.68	36.83	235.53	2244.86	S 215.74	W 314.25	9.84	353.19
End of Hold	8624.32	36.83	235.53	7284.79	S 2352.06	W 3426.01	0.00	3850.50
Target TPZ - ... Sec 5	9172.60	90.00	269.81	7527.00	S 2455.72	W 3878.16	36.09	4314.37
Target Btm Pe... Sec 6	16496.95	90.00	269.81	7527.00	S 2479.73	W 11202.47	0.00	11473.62
End of Turn	16497.15	90.00	269.83	7527.00	S 2479.73	W 11202.52	36.09	11473.67
T.D. & Target BHL...c 6	16597.13	90.00	269.83	7527.00	S 2480.04	W 11302.49	0.00	11571.39