

# Great Western Operating Company, LLC

**Location** Colorado  
**Field** Wattenburg  
**Installation** Ottesen  
**Slot** N15 - Ottesen LE 09-370HN  
**Well** Ottesen LE 09-370HN  
**Wellbore** Ottesen LE 09-370HN (PWB)

Created by admin  
Date plotted 28-Dec-2017

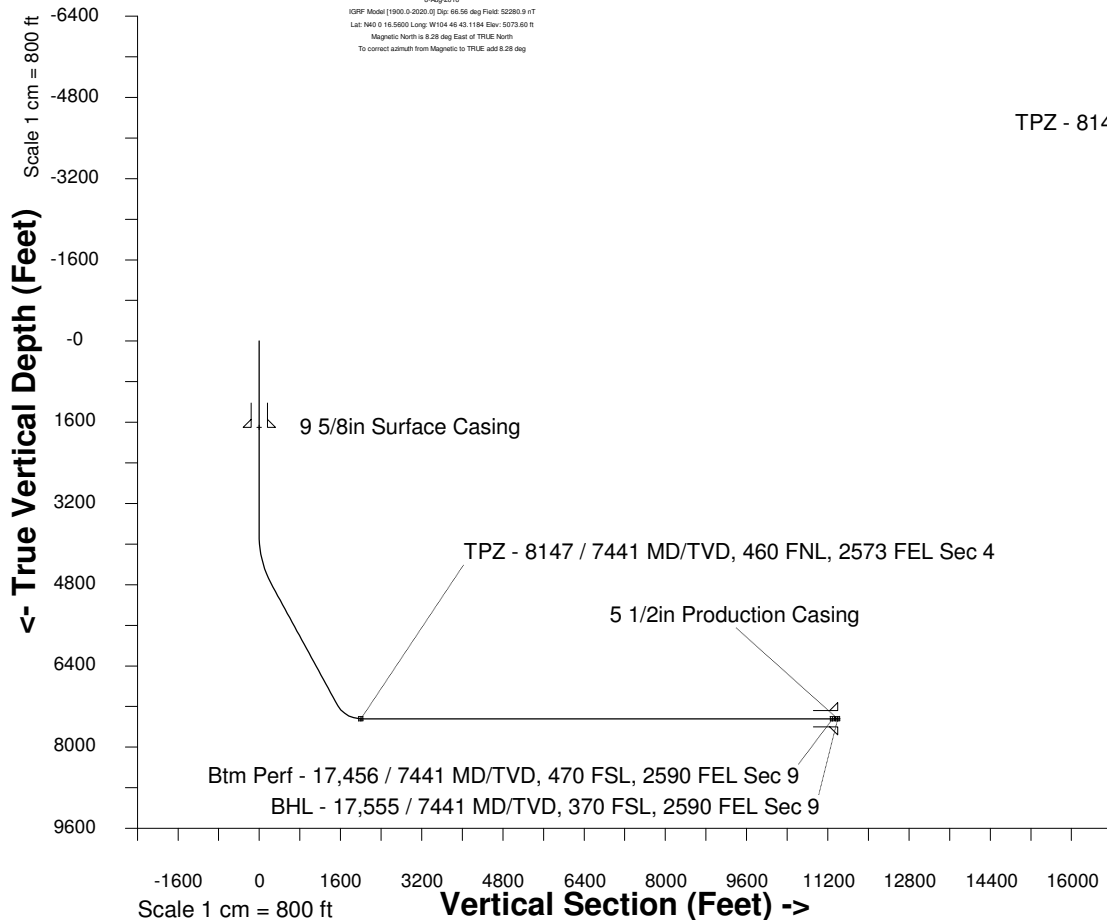
Plot reference is Ottesen LE 09-370HN (PWB).  
Ref wellpath is Ottesen LE 09-370HN (PWP#1).  
Coordinates are in Feet reference N15 - Ottesen LE 09-370HN.  
True Vertical Depths are reference Rig Datum.  
Measured Depths are reference Rig Datum.  
Rig Datum: Planned Datum #1  
Rig Datum to Mean Sea Level: 5093.60 ft.  
Plot North is aligned to TRUE North.

Scale 1 cm = 500 ft

East (Feet) ->

-9000 -8000 -7000 -6000 -5000 -4000 -3000 -2000 -1000 -0 1000 2000 3000

8-Aug-2016  
IGPP Model [1900.0-2020.0] Dip: 66.56 deg Field: 52280.9 nT  
Lat: N40 0 16.5600 Long: W104 46 43.1184 Elev: 5073.60 ft  
Magnetic North is 8.28 deg East of TRUE North  
To correct azimuth from Magnetic to TRUE, add 8.28 deg



Azimuth 183.14 with reference 0.00 N, 0.00 E from N15 - Ottesen LE 09-370HN

## WELL PROFILE DATA

Point	MD	Inc	Azi	TVD	North	East	deg/100ft	V. Sect
Tie on	0.00	0.00	0.00	0.00	S 0.00	W 0.00		-0.00
KOP	3840.00	0.00	201.95	3840.00	S 0.00	W 0.00	0.00	-0.00
End of Build	4840.11	30.00	201.95	4795.03	S 237.38	W 95.66	9.84	242.26
End of Hold	7579.95	30.00	201.95	7167.71	S 1508.12	W 607.78	0.00	1539.16
Target TPZ - ... Sec 4	8147.40	90.00	179.75	7441.00	S 1970.06	W 665.40	36.09	2003.56
Target Btm Pe... Sec 9	17456.10	90.00	179.75	7441.00	S 11278.67	W 625.01	0.00	11295.97
End of Turn	17456.78	90.00	179.68	7441.00	S 11279.35	W 625.00	36.09	11296.65
T.D. & Target BHL...c 9	17555.19	90.00	179.68	7441.00	S 11377.76	W 624.45	0.00	11394.88

Btm Perf - 17,456 / 7441 MD/TVD, 470 FSL, 2590 FEL Sec 9

BHL - 17,555 / 7441 MD/TVD, 370 FSL, 2590 FEL Sec 9

S/2 Sec 33, T1N, R66W

Sec 04, T1S, R66W

Sec 09, T1S, R66W

<- North(Feet)

Scale 1 cm = 500 ft