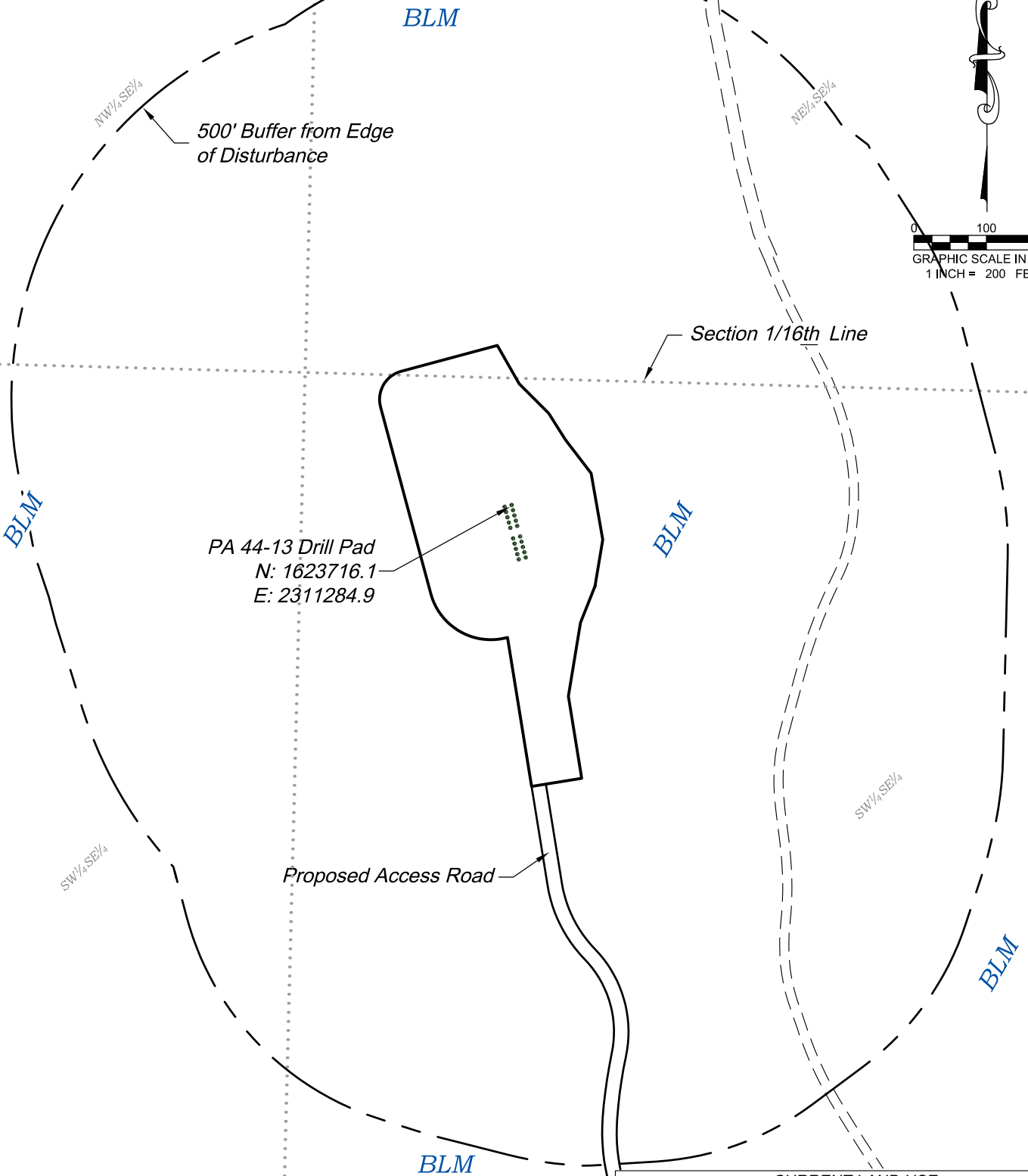


Section 13
T. 6 S., R. 95 W.



CURRENT LAND USE		
<input type="checkbox"/> CROP LAND	<input checked="" type="checkbox"/> NON-CROP LAND	<input type="checkbox"/> SUBDIVIDED
<input type="checkbox"/> IRRIGATED	<input checked="" type="checkbox"/> RANGELAND	<input type="checkbox"/> INDUSTRIAL
<input type="checkbox"/> DRY LAND	<input type="checkbox"/> TIMBER	<input type="checkbox"/> COMMERCIAL
<input type="checkbox"/> IMPROVED PASTURE	<input type="checkbox"/> RECREATIONAL	<input type="checkbox"/> RESIDENTIAL
<input type="checkbox"/> HAY MEADOW	<input type="checkbox"/> OTHER (describe):	
<input type="checkbox"/> CRP		

REVISED: 7/13/18

136 East Third Street
Rifle, Colorado 81650
Ph. (970) 625-2720
Fax (970) 625-2773



SCALE: 1" = 200'
DATE: 3/06/18
PLAT: 6 of 7
PROJECT: TEP Valley
DFT: cs

Construction Plan Prepared for:



TEP Rocky Mountain LLC

PA 44-13 Drill Pad - Plat 6
LOCATION

*Visible Improvements to Well Head
(ft.)*

<i>Description</i>	<i>Building</i>	<i>Building Unit</i>	<i>High Occu. Building</i>	<i>DOAA</i>	<i>Public Road</i>	<i>Above Ground Utility</i>	<i>Railroad</i>	<i>Property Line</i>
PA 22-24	149° 1898	149° 1898	>5280	>5280	>5280	139° 1423	>5280	91° 3135
PA 421-24	149° 1905	149° 1905	>5280	>5280	>5280	139° 1430	>5280	91° 3137
PA 21-24	150° 1912	150° 1912	>5280	>5280	>5280	139° 1436	>5280	91° 3139
PA 434-13	150° 1920	150° 1920	>5280	>5280	>5280	139° 1443	>5280	91° 3142
PA 334-13	150° 1927	150° 1927	>5280	>5280	>5280	139° 1450	>5280	91° 3144
PA 533-13	150° 1941	150° 1941	>5280	>5280	>5280	139° 1463	>5280	91° 3148
PA 333-13	150° 1949	150° 1949	>5280	>5280	>5280	140° 1470	>5280	91° 3150
PA 532-13	150° 1956	150° 1956	>5280	>5280	>5280	140° 1477	>5280	91° 3152
PA 332-13	150° 1963	150° 1963	>5280	>5280	>5280	140° 1484	>5280	91° 3154
PA 531-13	150° 1970	150° 1970	>5280	>5280	>5280	140° 1491	>5280	91° 3157
PA 521-24	149° 1901	149° 1901	>5280	>5280	>5280	138° 1427	>5280	91° 3145
PA 321-24	149° 1908	149° 1908	>5280	>5280	>5280	138° 1434	>5280	91° 3147
PA 524-13	149° 1915	149° 1915	>5280	>5280	>5280	139° 1441	>5280	91° 3149
PA 424-13	149° 1922	149° 1922	>5280	>5280	>5280	139° 1448	>5280	91° 3151
PA 324-13	149° 1930	149° 1930	>5280	>5280	>5280	139° 1454	>5280	91° 3153
PA 34-13	149° 1944	149° 1944	>5280	>5280	>5280	139° 1468	>5280	91° 3158
PA 433-13	150° 1951	150° 1951	>5280	>5280	>5280	139° 1474	>5280	91° 3160
PA 33-13	150° 1958	150° 1958	>5280	>5280	>5280	139° 1481	>5280	91° 3162
PA 432-13	150° 1966	150° 1966	>5280	>5280	>5280	140° 1488	>5280	91° 3164
PA 32-13	150° 1973	150° 1973	>5280	>5280	>5280	140° 1495	>5280	91° 3166

Production Equipment

Seperators	148° 1708	148° 1708	>5280	>5280	>5280	135° 1249	>5280	91° 3081
Tanks	146° 1612	146° 1612	>5280	>5280	>5280	132° 1166	>5280	91° 3062

REVISED: 7/18/18

136 East Third Street
Rifle, Colorado 81650
Ph. (970) 625-2720
Fax (970) 625-2773



SCALE: NA
DATE: 7/13/18
PLAT: 6B of 7
PROJECT: TEP Valley
DFT: cs

Construction Plan Prepared for:



TEP Rocky Mountain LLC

*PA 44-13 Drill Pad - Plat 6B
LOCATION TABLE*