



**Figure 2**  
**WCR Properties 41-5/Spaur 1-5**  
**Tank Battery -**  
**Facility Layout &**  
**Sample Locations**

### Legend

- Soil Sample (7/26/2018)
- ▲ Soil Sample (8/3/2018)
- ⬡ Soil Sample (8/7/2018)
- ⬢ Soil Sample (8/9/2018)
- ★ Groundwater Sample (8/6/2018)
- Groundwater Sample (8/7/2018)
- Crude Oil Tank
- Former Produced Water Sump
- Former Equipment
- Former Secondary Containment
- Excavation Extent (7/26/2018)
- Excavation Extent (Final)

### Sample Location

B: benzene  
T: toluene  
E: ethylbenzene  
X: xylenes  
TPH: total petroleum hydrocarbons

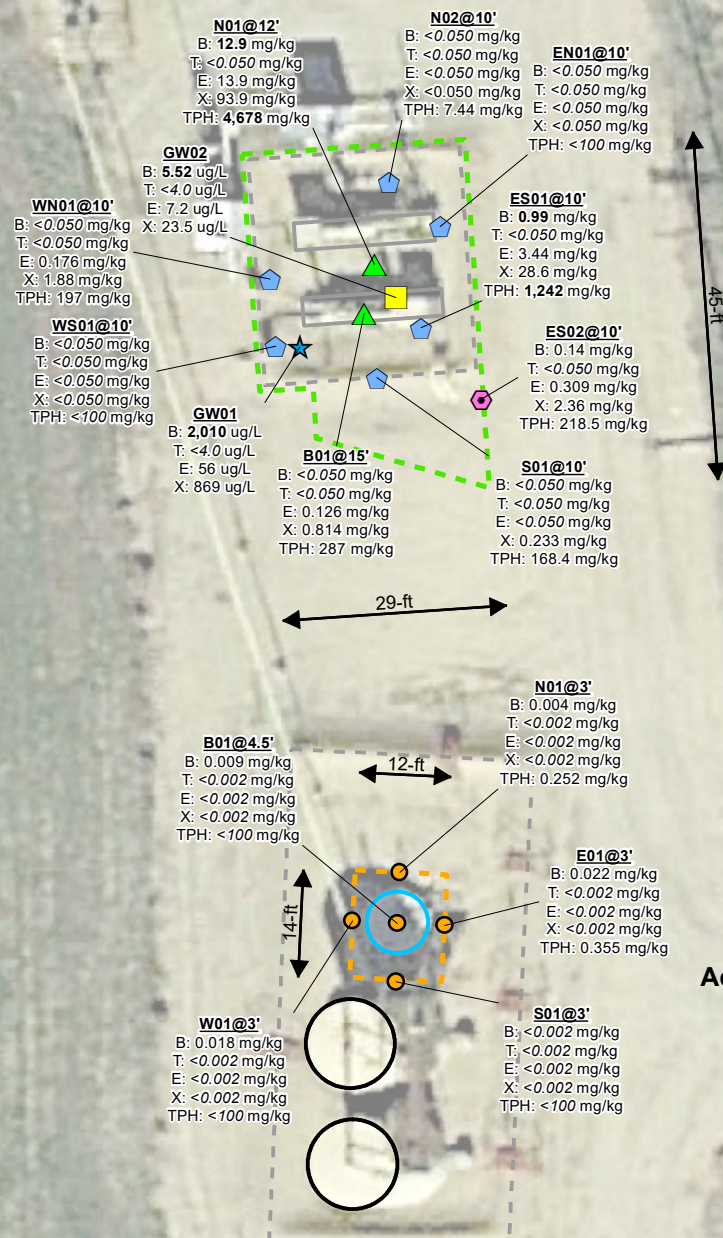
Bold values exceed COGCC Table  
910-1 allowable concentrations

### Site Characteristics

**Legal Location:** NENE, Sec 5, T3N R67W  
**County:** Weld  
**Land Use:** Cropland  
**Topography:** 3-9% Slopes  
**Run-Off Risk:** Medium  
**Soil Type:** Thedalund loam

REVISED	BY	COMMENT
8/15/2018	BJB	Figure 1

APEX  
beau.bergstrom@apexcos.com  
M:\Projects\Anadarko\DJL\_Basin\Remediation\WCR\_41-5\_TB\WCR\_41-5\_TB\_Fig1.dwg 20180813.mxd



For illustration purposes, spatial data in this diagram (e.g. sample points, excavation perimeter) is representative of field observations, and for illustration purposes may have been adjusted to align with aerial imagery and other pictured spatial data. Spatial data (e.g. ESRI shapefiles, Google Earth KMZ) provided separately from this diagram, may not be consistent with what is presented in this site diagram, due to adjustments made for illustrative purposes.

