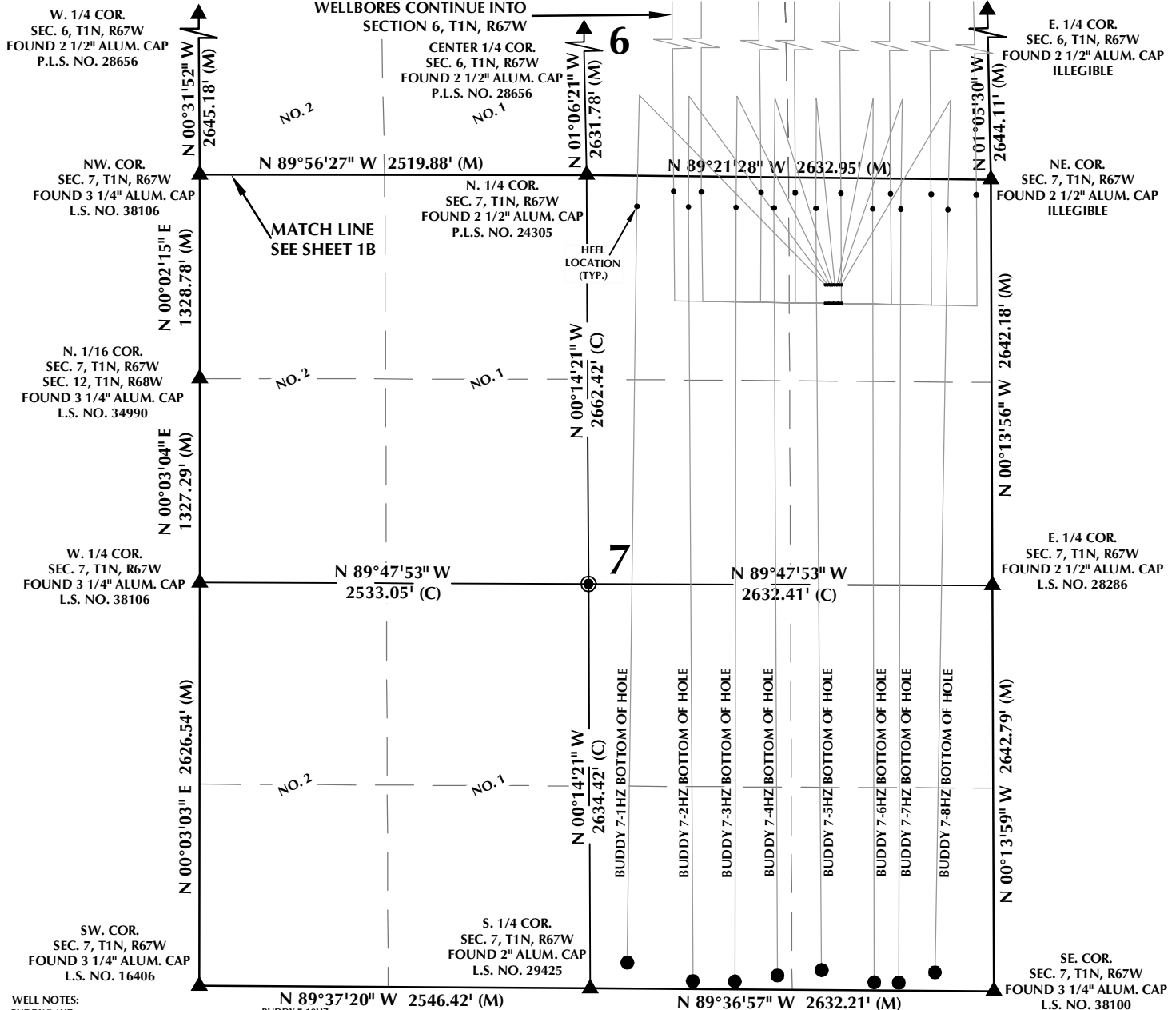


MULTI-WELL PLAN SECTIONS 6 & 7, T1N, R67W



WELL NOTES:

BUDDY 7-1HZ
SURFACE: 699' FNL, 1079' FEL, SEC. 7, T1N, R67W
BOTTOM HOLE: 160' FSL, 2389' FEL, SEC. 7, T1N, R67W
BUDDY 7-2HZ
SURFACE: 699' FNL, 1064' FEL, SEC. 7, T1N, R67W
BOTTOM HOLE: 50' FSL, 1962' FEL, SEC. 7, T1N, R67W
BUDDY 7-3HZ
SURFACE: 699' FNL, 1049' FEL, SEC. 7, T1N, R67W
BOTTOM HOLE: 50' FSL, 1688' FEL, SEC. 7, T1N, R67W
BUDDY 7-4HZ
SURFACE: 698' FNL, 1034' FEL, SEC. 7, T1N, R67W
BOTTOM HOLE: 90' FSL, 1410' FEL, SEC. 7, T1N, R67W
BUDDY 7-5HZ
SURFACE: 698' FNL, 1019' FEL, SEC. 7, T1N, R67W
BOTTOM HOLE: 128' FSL, 1122' FEL, SEC. 7, T1N, R67W
BUDDY 7-6HZ
SURFACE: 698' FNL, 1004' FEL, SEC. 7, T1N, R67W
BOTTOM HOLE: 50' FSL, 780' FEL, SEC. 7, T1N, R67W
BUDDY 7-7HZ
SURFACE: 698' FNL, 989' FEL, SEC. 7, T1N, R67W
BOTTOM HOLE: 49' FSL, 621' FEL, SEC. 7, T1N, R67W
BUDDY 7-8HZ
SURFACE: 698' FNL, 974' FEL, SEC. 7, T1N, R67W
BOTTOM HOLE: 118' FSL, 384' FEL, SEC. 7, T1N, R67W
BUDDY 7-9HZ
SURFACE: 819' FNL, 1080' FEL, SEC. 7, T1N, R67W
BOTTOM HOLE: 600' FNL, 2098' FEL, SEC. 31, T2N, R67W

BUDDY 7-10HZ
SURFACE: 819' FNL, 1065' FEL, SEC. 7, T1N, R67W
BOTTOM HOLE: 600' FNL, 1845' FEL, SEC. 31, T2N, R67W
BUDDY 7-11HZ
SURFACE: 819' FNL, 1050' FEL, SEC. 7, T1N, R67W
BOTTOM HOLE: 601' FNL, 1561' FEL, SEC. 31, T2N, R67W
BUDDY 7-12HZ
SURFACE: 818' FNL, 1035' FEL, SEC. 7, T1N, R67W
BOTTOM HOLE: 600' FNL, 1268' FEL, SEC. 31, T2N, R67W
BUDDY 7-13HZ
SURFACE: 818' FNL, 1020' FEL, SEC. 7, T1N, R67W
BOTTOM HOLE: 600' FNL, 977' FEL, SEC. 31, T2N, R67W
BUDDY 7-14HZ
SURFACE: 818' FNL, 1005' FEL, SEC. 7, T1N, R67W
BOTTOM HOLE: 600' FNL, 653' FEL, SEC. 31, T2N, R67W
BUDDY 7-15HZ
SURFACE: 818' FNL, 990' FEL, SEC. 7, T1N, R67W
BOTTOM HOLE: 600' FNL, 425' FEL, SEC. 31, T2N, R67W
BUDDY 7-16HZ
SURFACE: 818' FNL, 975' FEL, SEC. 7, T1N, R67W
BOTTOM HOLE: 600' FNL, 172' FEL, SEC. 31, T2N, R67W

NOTES:

- ▲ INDICATES SECTION CORNER.
- INDICATES CALCULATED CORNER.
- BASIS OF BEARING DERIVED FROM COLORADO COORDINATE SYSTEM OF 1983 NORTH ZONE. ALL MEASURED DISTANCES ARE GRID.
- COMBINED SCALE FACTOR: .99972179 CALCULATED FROM THE SW. CORNER OF SECTION 6, T1N, R67W.
- WELL FOOTAGES ARE MEASURED AT RIGHT ANGLES TO THE SECTION LINES.
- NO. 1 & NO. 2 AS SHOWN HEREON ARE GOVERNMENT LOTS 1 & 2 PER THE ORIGINAL GLO SURVEY.

WELL PAD - BUDDY 17-7HZ

MULTI-WELL PLAN
BUDDY 7-1HZ, BUDDY 7-2HZ,
BUDDY 7-3HZ, BUDDY 7-4HZ, BUDDY 7-5HZ,
BUDDY 7-6HZ, BUDDY 7-7HZ, BUDDY 7-8HZ,
BUDDY 7-9HZ, BUDDY 7-10HZ, BUDDY 7-11HZ,
BUDDY 7-12HZ, BUDDY 7-13HZ, BUDDY 7-14HZ,
BUDDY 7-15HZ & BUDDY 7-16HZ
LOCATED IN SECTIONS 6 & 7, T1N, R67W, 6TH P.M. &
LOCATED IN SECTION 31, T2N, R67W, 6TH P.M.
WELD COUNTY, COLORADO

**Kerr-McGee Oil &
Gas Onshore L.P.**
1099 18th Street
Denver, Colorado 80202



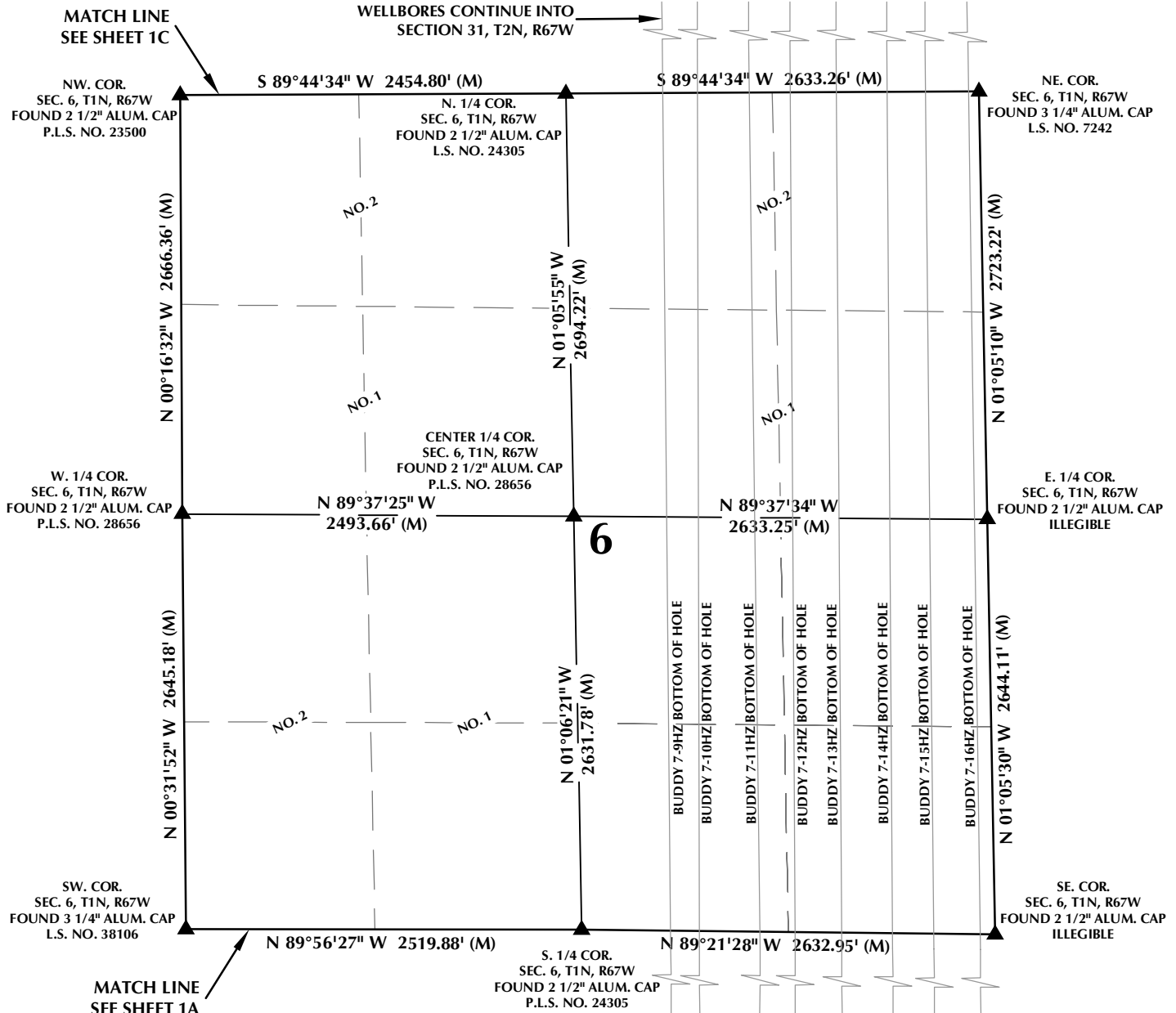
CONSULTING, LLC

SHERIDAN OFFICE
1095 Saberton Avenue
Sheridan, Wyoming 82801
Phone 307-674-0609

LOVELAND OFFICE
6706 North Franklin Avenue
Loveland, Colorado 80538
Phone 970-776-4331

DRAFTED BY:	LMO	CHECKED BY:	RKF	SHEET NO:
DATE DRAFTED:	6/5/18	DATE SURVEYED:	5/7/18	1A
REVISED:		FILE NAME:	16-183	1A OF 1

MULTI-WELL PLAN SECTION 6, T1N, R67W



WELL NOTES:

BUDDY 7-1HZ
SURFACE: 699' FNL, 1079' FEL, SEC. 7, T1N, R67W
BOTTOM HOLE: 168' FSL, 2389' FEL, SEC. 7, T1N, R67W

BUDDY 7-2HZ
SURFACE: 699' FNL, 1064' FEL, SEC. 7, T1N, R67W
BOTTOM HOLE: 50' FSL, 1962' FEL, SEC. 7, T1N, R67W

BUDDY 7-3HZ
SURFACE: 699' FNL, 1049' FEL, SEC. 7, T1N, R67W
BOTTOM HOLE: 50' FSL, 1688' FEL, SEC. 7, T1N, R67W

BUDDY 7-4HZ
SURFACE: 698' FNL, 1034' FEL, SEC. 7, T1N, R67W
BOTTOM HOLE: 90' FSL, 1410' FEL, SEC. 7, T1N, R67W

BUDDY 7-5HZ
SURFACE: 698' FNL, 1019' FEL, SEC. 7, T1N, R67W
BOTTOM HOLE: 128' FSL, 1122' FEL, SEC. 7, T1N, R67W

BUDDY 7-6HZ
SURFACE: 698' FNL, 1004' FEL, SEC. 7, T1N, R67W
BOTTOM HOLE: 50' FSL, 780' FEL, SEC. 7, T1N, R67W

BUDDY 7-7HZ
SURFACE: 698' FNL, 989' FEL, SEC. 7, T1N, R67W
BOTTOM HOLE: 49' FSL, 621' FEL, SEC. 7, T1N, R67W

BUDDY 7-8HZ
SURFACE: 698' FNL, 974' FEL, SEC. 7, T1N, R67W
BOTTOM HOLE: 118' FSL, 384' FEL, SEC. 7, T1N, R67W

BUDDY 7-9HZ
SURFACE: 819' FNL, 1080' FEL, SEC. 7, T1N, R67W
BOTTOM HOLE: 600' FNL, 2098' FEL, SEC. 31, T2N, R67W

BUDDY 7-10HZ
SURFACE: 819' FNL, 1065' FEL, SEC. 7, T1N, R67W
BOTTOM HOLE: 600' FNL, 1845' FEL, SEC. 31, T2N, R67W

BUDDY 7-11HZ
SURFACE: 819' FNL, 1050' FEL, SEC. 7, T1N, R67W
BOTTOM HOLE: 601' FNL, 1561' FEL, SEC. 31, T2N, R67W

BUDDY 7-12HZ
SURFACE: 818' FNL, 1035' FEL, SEC. 7, T1N, R67W
BOTTOM HOLE: 600' FNL, 1268' FEL, SEC. 31, T2N, R67W

BUDDY 7-13HZ
SURFACE: 818' FNL, 1020' FEL, SEC. 7, T1N, R67W
BOTTOM HOLE: 600' FNL, 977' FEL, SEC. 31, T2N, R67W

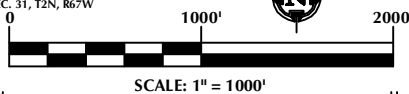
BUDDY 7-14HZ
SURFACE: 818' FNL, 1005' FEL, SEC. 7, T1N, R67W
BOTTOM HOLE: 600' FNL, 653' FEL, SEC. 31, T2N, R67W

BUDDY 7-15HZ
SURFACE: 818' FNL, 990' FEL, SEC. 7, T1N, R67W
BOTTOM HOLE: 600' FNL, 425' FEL, SEC. 31, T2N, R67W

BUDDY 7-16HZ
SURFACE: 818' FNL, 975' FEL, SEC. 7, T1N, R67W
BOTTOM HOLE: 600' FNL, 172' FEL, SEC. 31, T2N, R67W

NOTES:

- ▲ INDICATES SECTION CORNER.
- INDICATES CALCULATED CORNER.
- BASIS OF BEARING DERIVED FROM COLORADO COORDINATE SYSTEM OF 1983 NORTH ZONE. ALL MEASURED DISTANCES ARE GRID.
- COMBINED SCALE FACTOR: .99972179 CALCULATED FROM THE SW. CORNER OF SECTION 6, T1N, R67W.
- WELL FOOTAGES ARE MEASURED AT RIGHT ANGLES TO THE SECTION LINES.
- NO. 1 & NO. 2 AS SHOWN HEREON ARE GOVERNMENT LOTS 1 & 2 PER THE ORIGINAL GLO SURVEY.



WELL PAD - BUDDY 17-7HZ

MULTI-WELL PLAN

BUDDY 7-1HZ, BUDDY 7-2HZ,
BUDDY 7-3HZ, BUDDY 7-4HZ, BUDDY 7-5HZ,
BUDDY 7-6HZ, BUDDY 7-7HZ, BUDDY 7-8HZ,
BUDDY 7-9HZ, BUDDY 7-10HZ, BUDDY 7-11HZ,
BUDDY 7-12HZ, BUDDY 7-13HZ, BUDDY 7-14HZ,
BUDDY 7-15HZ & BUDDY 7-16HZ

LOCATED IN SECTIONS 6 & 7, T1N, R67W, 6TH P.M. &
LOCATED IN SECTION 31, T2N, R67W, 6TH P.M.

WELD COUNTY, COLORADO

**Kerr-McGee Oil &
Gas Onshore L.P.**

1099 18th Street
Denver, Colorado 80202



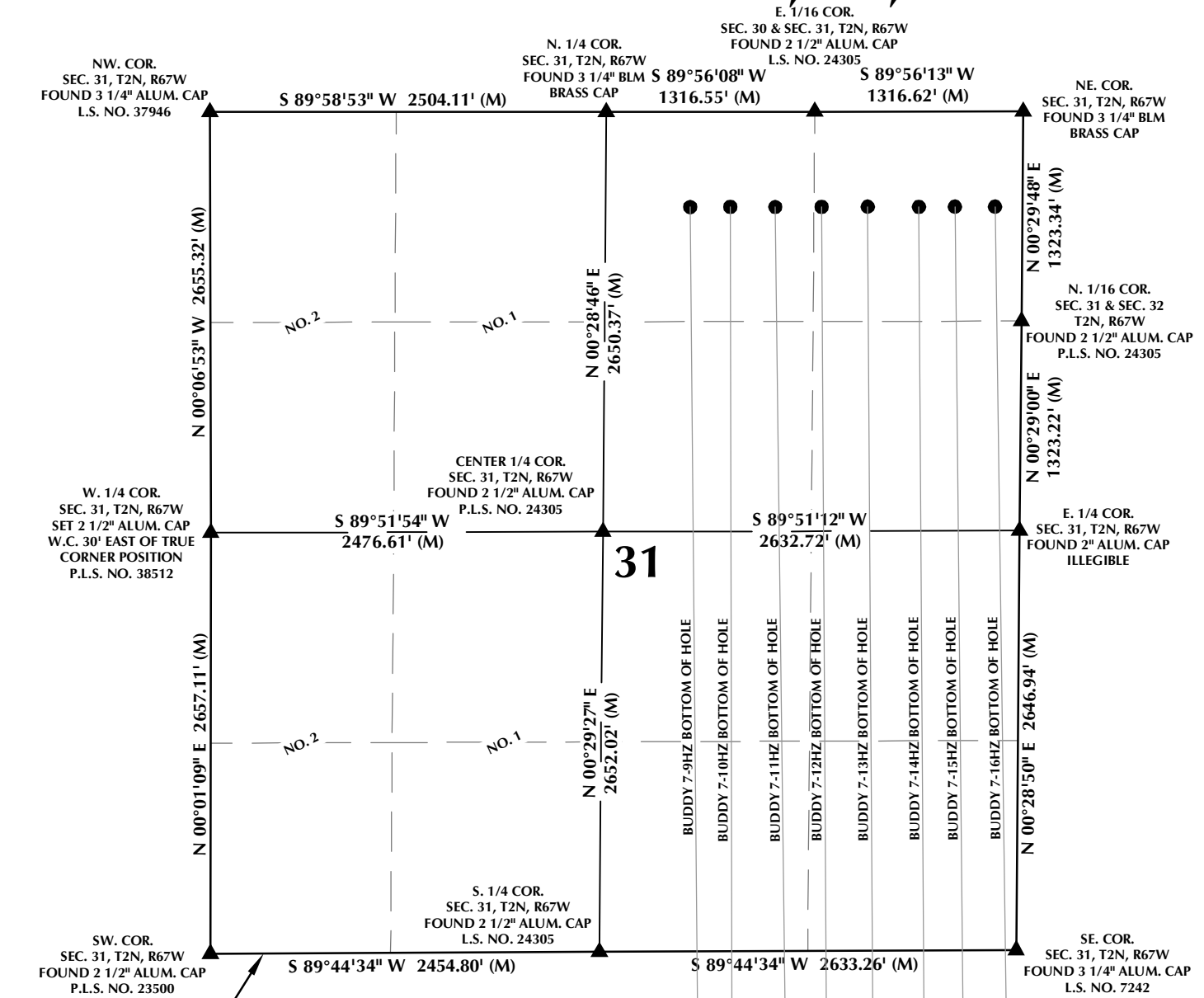
CONSULTING, LLC

SHERIDAN OFFICE
1095 Saberton Avenue
Sheridan, Wyoming 82801
Phone 307-674-0609

LOVELAND OFFICE
6706 North Franklin Avenue
Loveland, Colorado 80538
Phone 970-776-4331

DRAFTED BY:	LMO	CHECKED BY:	RKF	SHEET NO:
DATE DRAFTED:	6/5/18	DATE SURVEYED:	5/7/18	1B
REVISED:		FILE NAME:	16-183	1B OF 1

MULTI-WELL PLAN SECTION 31, T2N, R67W



WELL NOTES:

Buddy 7-1HZ
SURFACE: 699' FNL, 1079' FEL, SEC. 7, T1N, R67W
BOTTOM HOLE: 168' FSL, 2389' FEL, SEC. 7, T1N, R67W

Buddy 7-2HZ
SURFACE: 699' FNL, 1064' FEL, SEC. 7, T1N, R67W
BOTTOM HOLE: 50' FSL, 1962' FEL, SEC. 7, T1N, R67W

Buddy 7-3HZ
SURFACE: 699' FNL, 1049' FEL, SEC. 7, T1N, R67W
BOTTOM HOLE: 50' FSL, 1688' FEL, SEC. 7, T1N, R67W

Buddy 7-4HZ
SURFACE: 698' FNL, 1034' FEL, SEC. 7, T1N, R67W
BOTTOM HOLE: 90' FSL, 1410' FEL, SEC. 7, T1N, R67W

Buddy 7-5HZ
SURFACE: 698' FNL, 1019' FEL, SEC. 7, T1N, R67W
BOTTOM HOLE: 128' FSL, 1122' FEL, SEC. 7, T1N, R67W

Buddy 7-6HZ
SURFACE: 698' FNL, 1004' FEL, SEC. 7, T1N, R67W
BOTTOM HOLE: 50' FSL, 780' FEL, SEC. 7, T1N, R67W

Buddy 7-7HZ
SURFACE: 698' FNL, 989' FEL, SEC. 7, T1N, R67W
BOTTOM HOLE: 49' FSL, 621' FEL, SEC. 7, T1N, R67W

Buddy 7-8HZ
SURFACE: 698' FNL, 974' FEL, SEC. 7, T1N, R67W
BOTTOM HOLE: 118' FSL, 384' FEL, SEC. 7, T1N, R67W

Buddy 7-9HZ
SURFACE: 819' FNL, 1080' FEL, SEC. 7, T1N, R67W
BOTTOM HOLE: 600' FNL, 2098' FEL, SEC. 31, T2N, R67W

Buddy 7-10HZ
SURFACE: 819' FNL, 1065' FEL, SEC. 7, T1N, R67W
BOTTOM HOLE: 600' FNL, 1845' FEL, SEC. 31, T2N, R67W

Buddy 7-11HZ
SURFACE: 819' FNL, 1050' FEL, SEC. 7, T1N, R67W
BOTTOM HOLE: 601' FNL, 1561' FEL, SEC. 31, T2N, R67W

Buddy 7-12HZ
SURFACE: 818' FNL, 1035' FEL, SEC. 7, T1N, R67W
BOTTOM HOLE: 600' FNL, 1268' FEL, SEC. 31, T2N, R67W

Buddy 7-13HZ
SURFACE: 818' FNL, 1020' FEL, SEC. 7, T1N, R67W
BOTTOM HOLE: 600' FNL, 977' FEL, SEC. 31, T2N, R67W

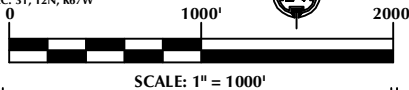
Buddy 7-14HZ
SURFACE: 818' FNL, 1005' FEL, SEC. 7, T1N, R67W
BOTTOM HOLE: 600' FNL, 653' FEL, SEC. 31, T2N, R67W

Buddy 7-15HZ
SURFACE: 818' FNL, 990' FEL, SEC. 7, T1N, R67W
BOTTOM HOLE: 600' FNL, 425' FEL, SEC. 31, T2N, R67W

Buddy 7-16HZ
SURFACE: 818' FNL, 975' FEL, SEC. 7, T1N, R67W
BOTTOM HOLE: 600' FNL, 172' FEL, SEC. 31, T2N, R67W

NOTES:

- ▲ INDICATES SECTION CORNER.
- INDICATES CALCULATED CORNER.
- BASIS OF BEARING DERIVED FROM COLORADO COORDINATE SYSTEM OF 1983 NORTH ZONE. ALL MEASURED DISTANCES ARE GRID.
- COMBINED SCALE FACTOR: .99972179 CALCULATED FROM THE SW. CORNER OF SECTION 6, T1N, R67W.
- WELL FOOTAGES ARE MEASURED AT RIGHT ANGLES TO THE SECTION LINES.
- NO. 1 & NO. 2 AS SHOWN HEREON ARE GOVERNMENT LOTS 1 & 2 PER THE ORIGINAL GLO SURVEY.



WELL PAD - BUDDY 17-7HZ

MULTI-WELL PLAN

BUDDY 7-1HZ, BUDDY 7-2HZ,
BUDDY 7-3HZ, BUDDY 7-4HZ, BUDDY 7-5HZ,
BUDDY 7-6HZ, BUDDY 7-7HZ, BUDDY 7-8HZ,
BUDDY 7-9HZ, BUDDY 7-10HZ, BUDDY 7-11HZ,
BUDDY 7-12HZ, BUDDY 7-13HZ, BUDDY 7-14HZ,
BUDDY 7-15HZ & BUDDY 7-16HZ

LOCATED IN SECTIONS 6 & 7, T1N, R67W, 6TH P.M. &
LOCATED IN SECTION 31, T2N, R67W, 6TH P.M.

WELD COUNTY, COLORADO

**Kerr-McGee Oil &
Gas Onshore L.P.**

1099 18th Street
Denver, Colorado 80202



CONSULTING, LLC

SHERIDAN OFFICE
1095 Saberton Avenue
Sheridan, Wyoming 82801
Phone 307-674-0609

LOVELAND OFFICE
6706 North Franklin Avenue
Loveland, Colorado 80538
Phone 970-776-4331

DRAFTED BY:	LMO	CHECKED BY:	RKF	SHEET NO:
DATE DRAFTED:	6/5/18	DATE SURVEYED:	5/7/18	1C
REVISED:		FILE NAME:	16-183	1C OF 1