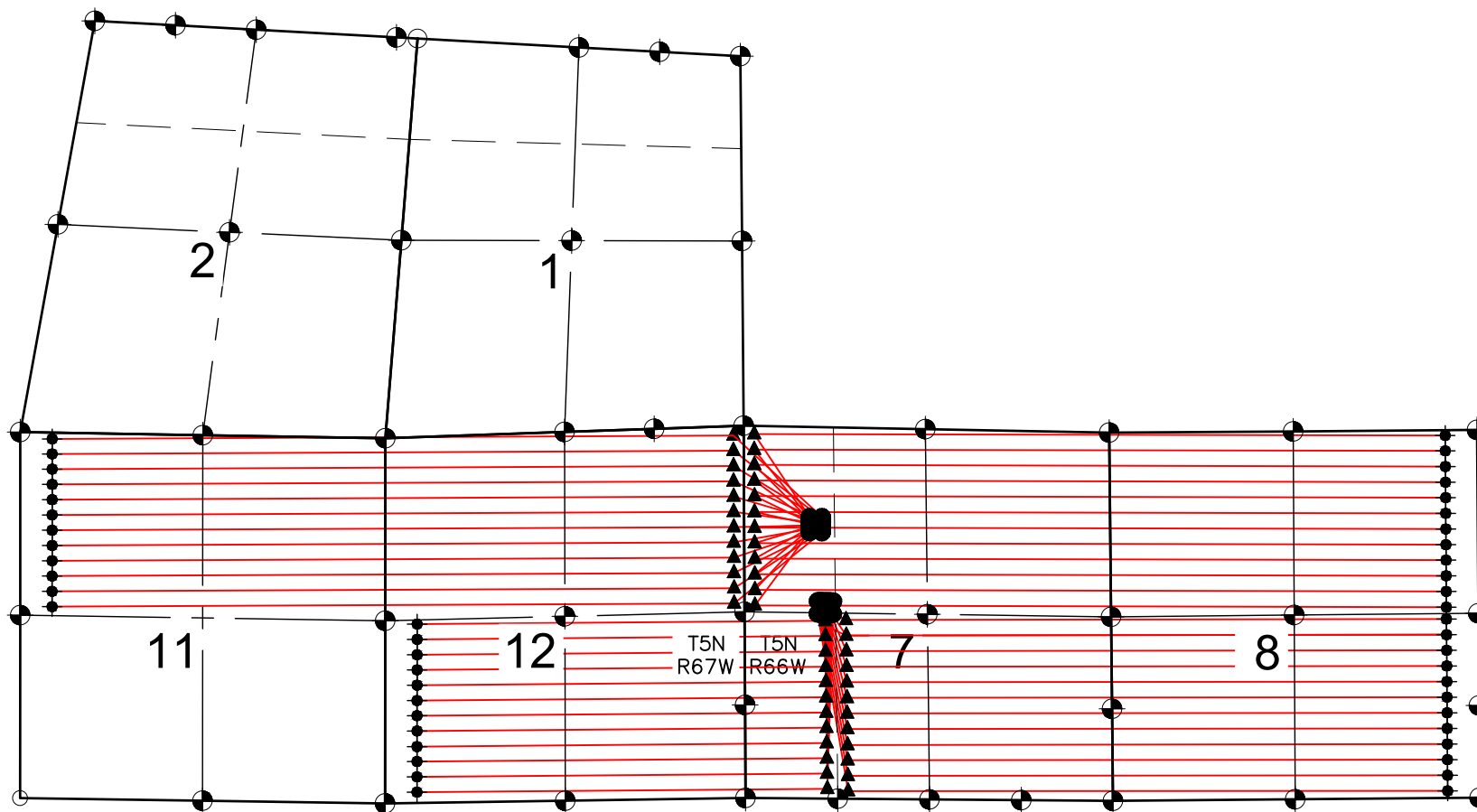


BOST FARM 5-7 PAD MULTI-WELL PLAN

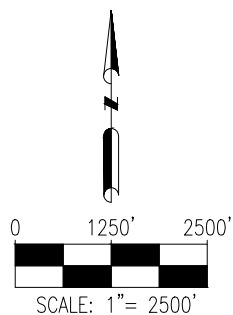


NOTES:



1. THIS FIELD SURVEY CONFORMS TO THE MINIMUM STANDARDS SET BY THE C.O.G.C.C., RULE NO. 215
2. ALL DISTANCES AND BEARINGS SHOWN HEREON ARE GROUND VALUES AS GPS MEASURED IN THE FIELD, WITH TIES TO WELLS MEASURED PERPENDICULAR TO SECTION LINES. THIS LOW DISTORTION PROJECTION (LDP) IS BASED ON THE NORTH AMERICAN DATUM OF 1983, U.S. SURVEY FOOT WITH A LATITUDE ORIGIN OF 40.392315°, A CENTRAL MERIDIAN LONGITUDE OF -104.794248°, AND A SCALE FACTOR ON THE CENTRAL MERIDIAN OF 1.000228 (EXACT). THE LDP BASIS OF BEARINGS IS GEODETIC NORTH.
3. FIELD VERIFICATION OF MONUMENTS COMPLETED WITHIN 1 YEAR OF SIGNATURE DATE.

LEGEND

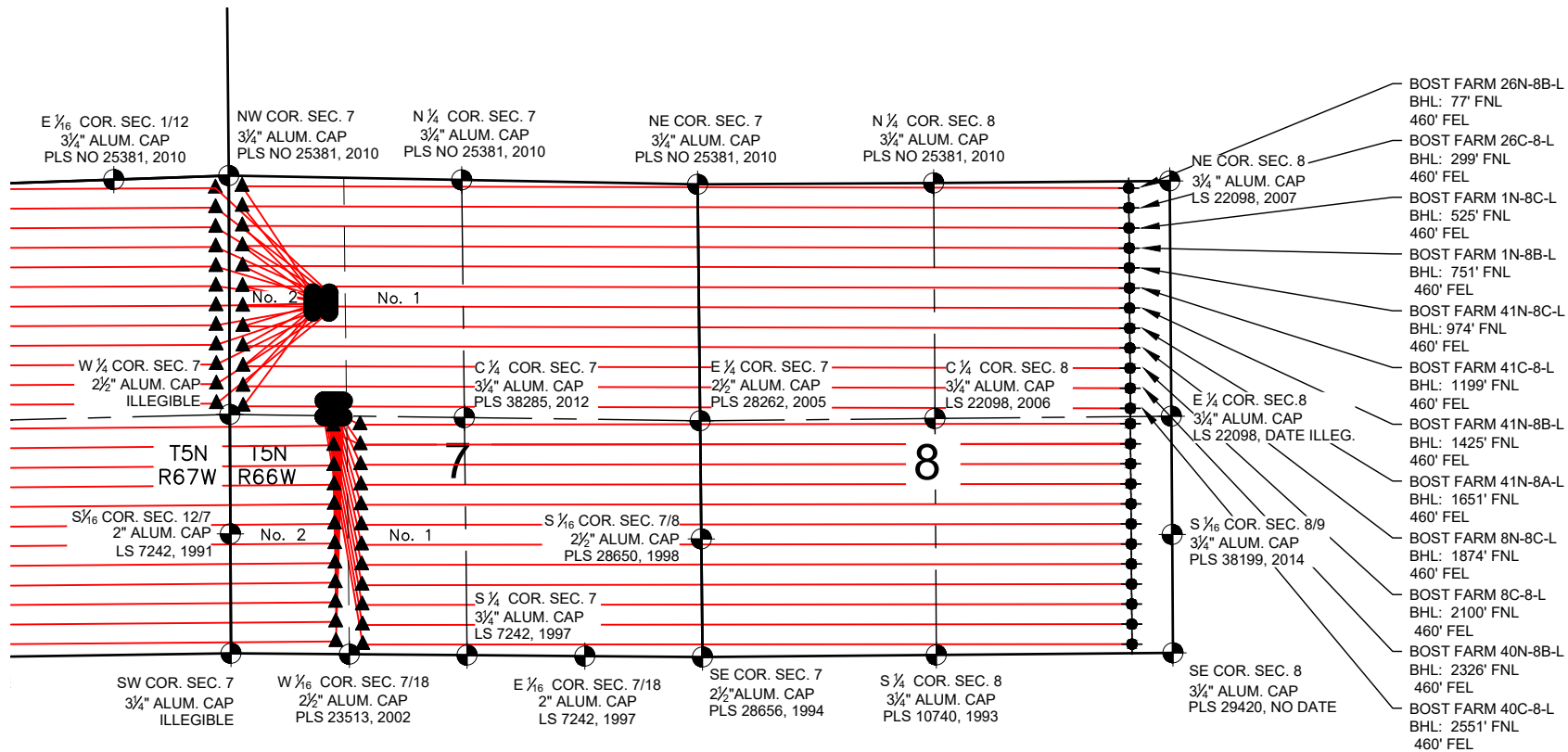
- ⊕ = EXISTING MONUMENT
- = CALCULATED POSITION
- = PROPOSED WELL
- ◆ = EXISTING WELL
- ⬮ = BOTTOM HOLE
- ▲ = TOP OF PRODUCTION ZONE
- TPZ = TOP OF PRODUCTION ZONE
- BHL = BOTTOM HOLE LOCATION



SHEET 1 OF 10

 ASCENT GEOMATICS SOLUTIONS 7535 Hilltop Circle Denver, CO 80221 (303) 928-7128 www.ascentgeomatics.com	FIELD DATE: 06-15-17		WELL NAME: BOST FARM 5-7 PAD		PREPARED FOR:  SRC ENERGY
	DRAWING DATE: 08-09-18		SURFACE LOCATION: LOT 2 NW 1/4 SEC. 7, T5N, R66W, 6TH P.M. WELD COUNTY, COLORADO		
	BY: MMP	CHECKED BY: MJE			

BOST FARM 5-7 PAD MULTI-WELL PLAN

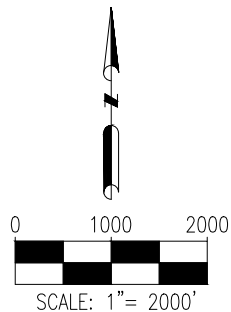


NOTES:

1. THIS FIELD SURVEY CONFORMS TO THE MINIMUM STANDARDS SET BY THE C.O.G.C.C., RULE NO. 215
2. ALL DISTANCES AND BEARINGS SHOWN HEREON ARE GROUND VALUES AS GPS MEASURED IN THE FIELD, WITH TIES TO WELLS MEASURED PERPENDICULAR TO SECTION LINES. THIS LOW DISTORTION PROJECTION (LDP) IS BASED ON THE NORTH AMERICAN DATUM OF 1983, U.S. SURVEY FOOT WITH A LATITUDE ORIGIN OF 40.392315°, A CENTRAL MERIDIAN LONGITUDE OF -104.794248°, AND A SCALE FACTOR ON THE CENTRAL MERIDIAN OF 1.000228 (EXACT). THE LDP BASIS OF BEARINGS IS GEODETIC NORTH.
3. FIELD VERIFICATION OF MONUMENTS COMPLETED WITHIN 1 YEAR OF SIGNATURE DATE.

LEGEND

- = EXISTING MONUMENT
- = CALCULATED POSITION
- = PROPOSED WELL
- ◆ = EXISTING WELL
- ◆ = BOTTOM HOLE
- ▲ = TOP OF PRODUCTION ZONE
- TPZ = TOP OF PRODUCTION ZONE
- BHL = BOTTOM HOLE LOCATION



SHEET 2 OF 10



FIELD DATE:
06-15-17

DRAWING DATE:
08-09-18

BY:
MMP

CHECKED BY:
MJE

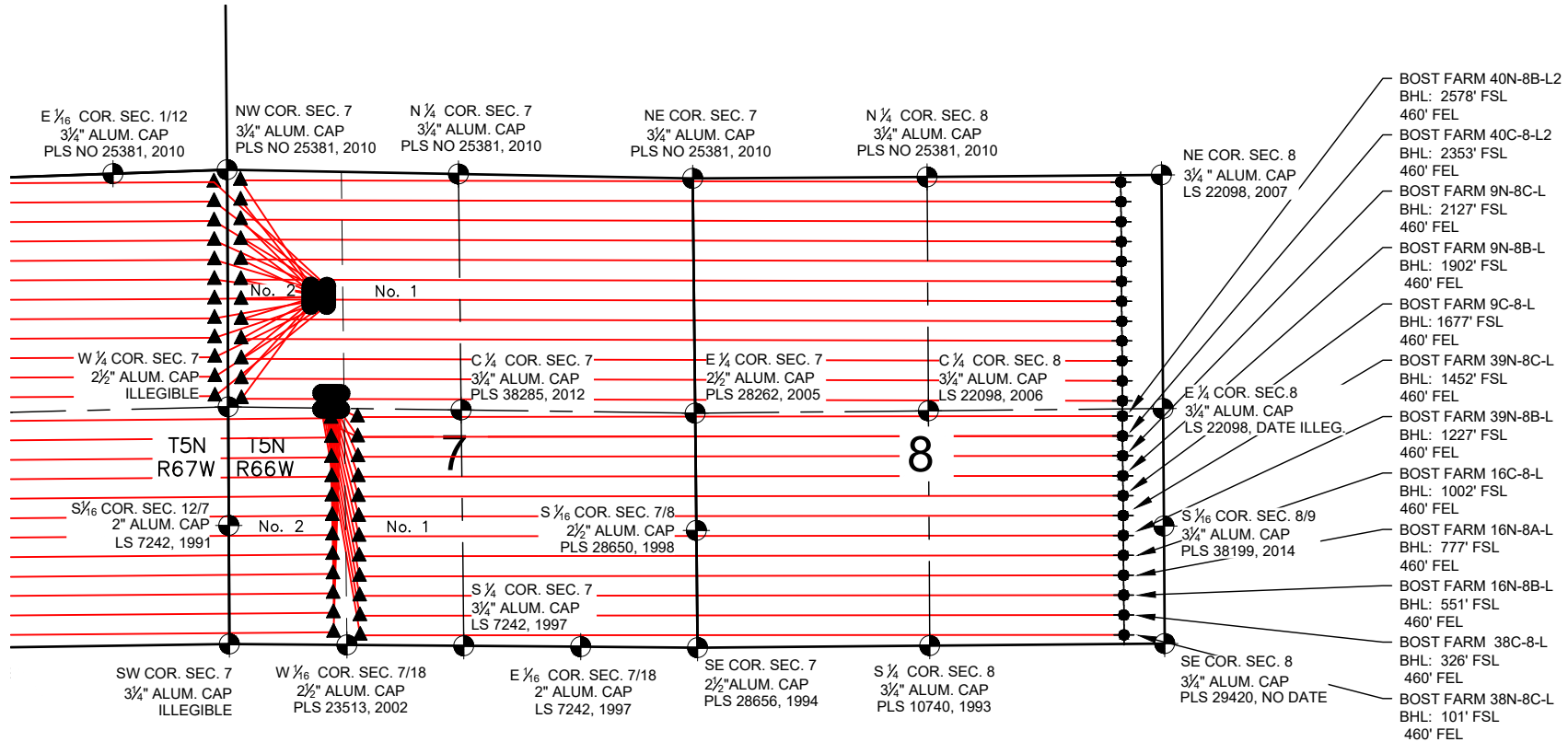
WELL NAME:
BOST FARM 5-7 PAD

SURFACE LOCATION:
LOT 2 NW 1/4 SEC. 7, T5N, R66W, 6TH P.M.
WELD COUNTY, COLORADO

PREPARED FOR:



BOST FARM 5-7 PAD MULTI-WELL PLAN

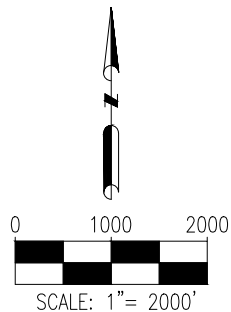


NOTES:

1. THIS FIELD SURVEY CONFORMS TO THE MINIMUM STANDARDS SET BY THE C.O.G.C.C., RULE NO. 215
2. ALL DISTANCES AND BEARINGS SHOWN HEREON ARE GROUND VALUES AS GPS MEASURED IN THE FIELD, WITH TIES TO WELLS MEASURED PERPENDICULAR TO SECTION LINES. THIS LOW DISTORTION PROJECTION (LDP) IS BASED ON THE NORTH AMERICAN DATUM OF 1983, U.S. SURVEY FOOT WITH A LATITUDE ORIGIN OF 40.392315°, A CENTRAL MERIDIAN LONGITUDE OF -104.794248°, AND A SCALE FACTOR ON THE CENTRAL MERIDIAN OF 1.000228 (EXACT). THE LDP BASIS OF BEARINGS IS GEODETIC NORTH.
3. FIELD VERIFICATION OF MONUMENTS COMPLETED WITHIN 1 YEAR OF SIGNATURE DATE.

LEGEND

- = EXISTING MONUMENT
- = CALCULATED POSITION
- = PROPOSED WELL
- ◆ = EXISTING WELL
- ◆ = BOTTOM HOLE
- ▲ = TOP OF PRODUCTION ZONE
- TPZ = TOP OF PRODUCTION ZONE
- BHL = BOTTOM HOLE LOCATION



SHEET 3 OF 10



FIELD DATE:

06-15-17

DRAWING DATE:

08-09-18

BY:

MMP

CHECKED BY:

MJE

WELL NAME:

BOST FARM 5-7 PAD

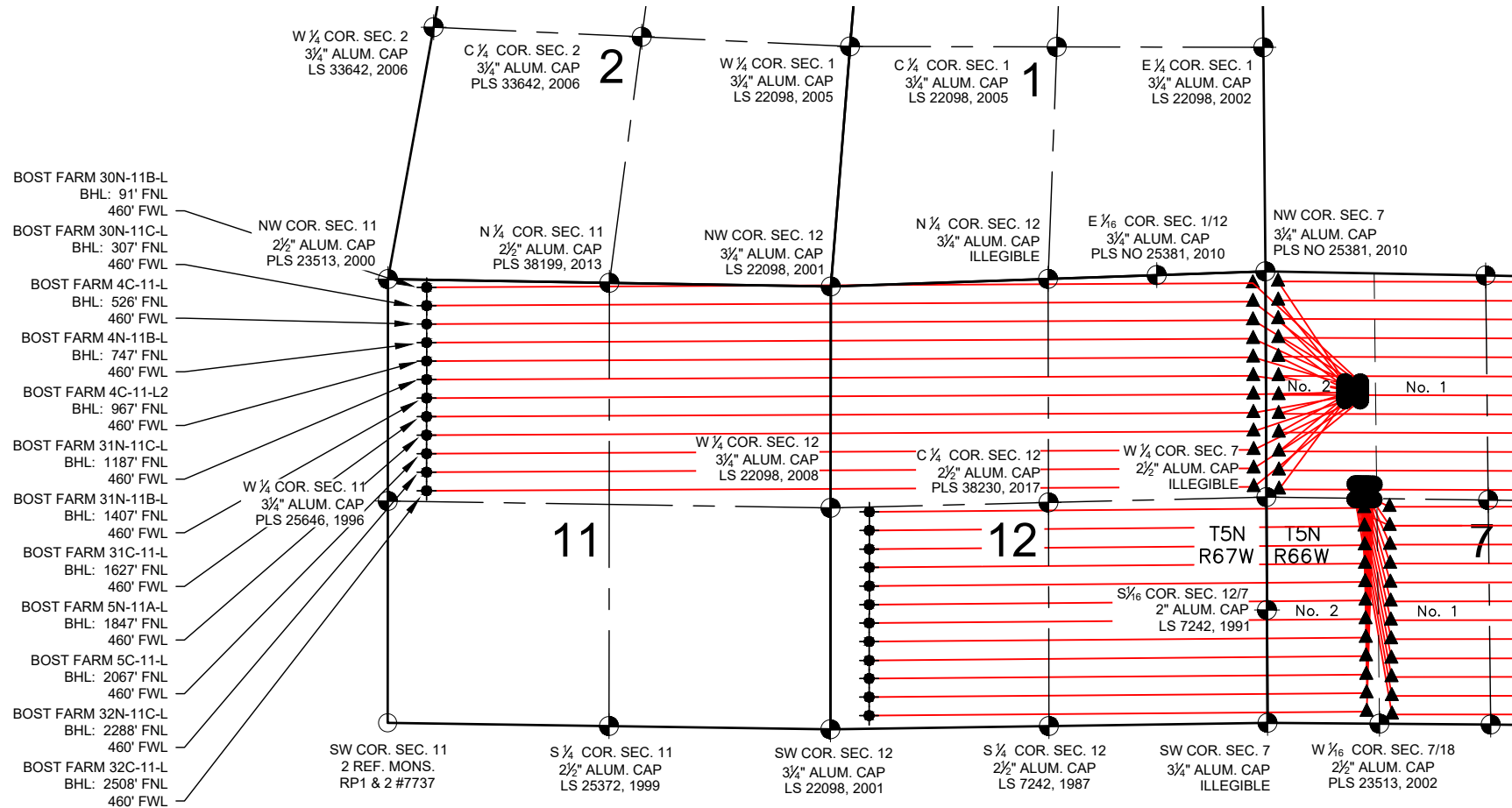
SURFACE LOCATION:

LOT 2 NW 1/4 SEC. 7, T5N, R66W, 6TH P.M.
WELD COUNTY, COLORADO

PREPARED FOR:



BOST FARM 5-7 PAD MULTI-WELL PLAN

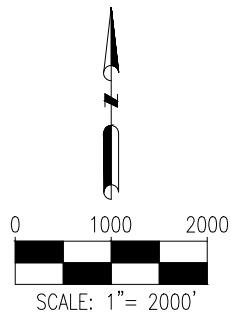


NOTES:

- THIS FIELD SURVEY CONFORMS TO THE MINIMUM STANDARDS SET BY THE C.O.G.C.C., RULE NO. 215
- ALL DISTANCES AND BEARINGS SHOWN HEREON ARE GROUND VALUES AS GPS MEASURED IN THE FIELD, WITH TIES TO WELLS MEASURED PERPENDICULAR TO SECTION LINES. THIS LOW DISTORTION PROJECTION (LDP) IS BASED ON THE NORTH AMERICAN DATUM OF 1983, U.S. SURVEY FOOT WITH A LATITUDE ORIGIN OF 40.392315°, A CENTRAL MERIDIAN LONGITUDE OF -104.794248°, AND A SCALE FACTOR ON THE CENTRAL MERIDIAN OF 1.000228 (EXACT). THE LDP BASIS OF BEARINGS IS GEODETIC NORTH.
- FIELD VERIFICATION OF MONUMENTS COMPLETED WITHIN 1 YEAR OF SIGNATURE DATE.

LEGEND

- = EXISTING MONUMENT
- = CALCULATED POSITION
- = PROPOSED WELL
- ◆ = EXISTING WELL
- ◆ = BOTTOM HOLE
- ▲ = TOP OF PRODUCTION ZONE
- TPZ = TOP OF PRODUCTION ZONE
- BHL = BOTTOM HOLE LOCATION



FIELD DATE:
06-15-17

DRAWING DATE:
08-09-18

BY: MMP
CHECKED BY: MJE

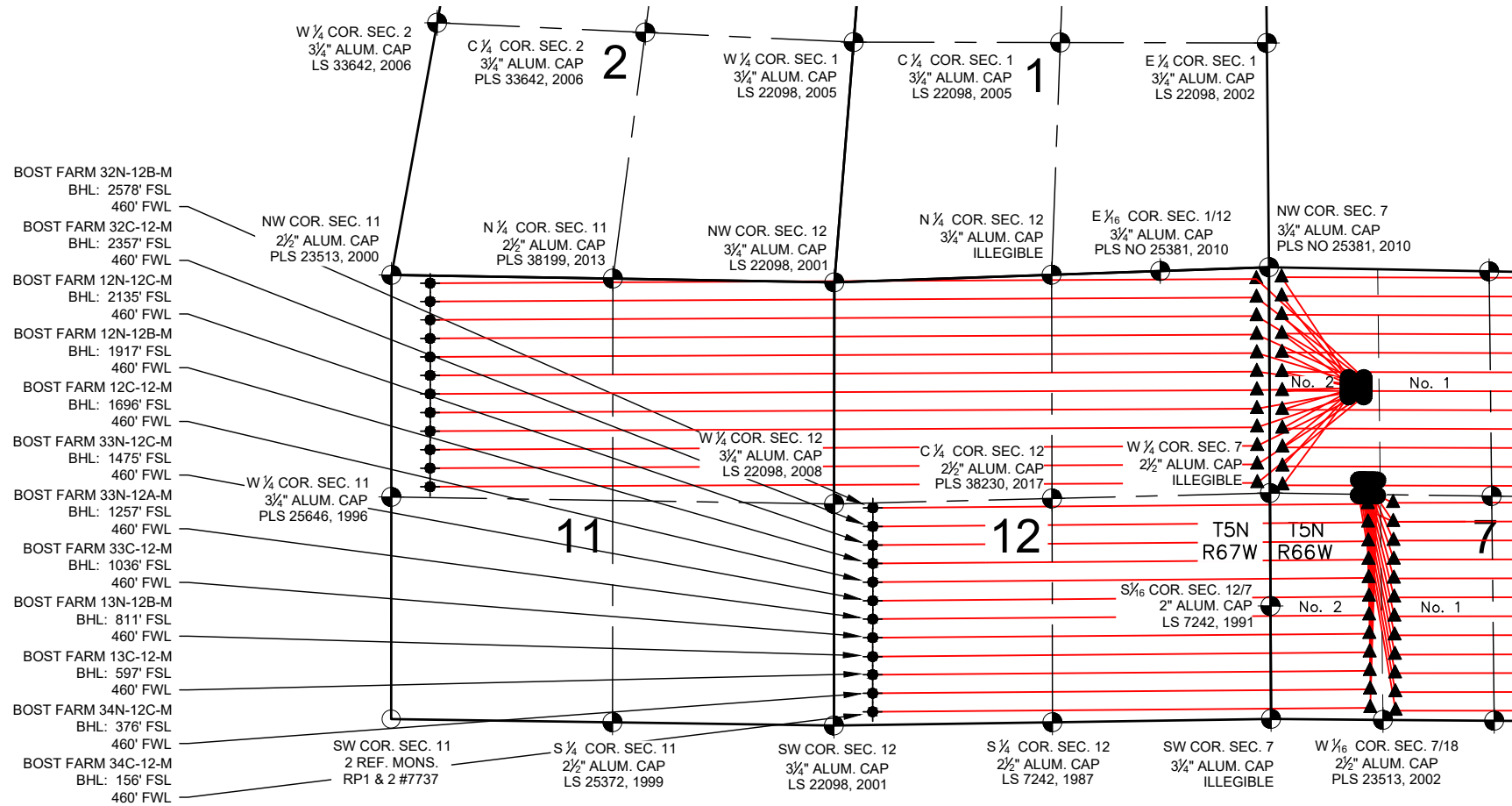
WELL NAME:
BOST FARM 5-7 PAD

SURFACE LOCATION:
LOT 2 NW 1/4 SEC. 7, T5N, R66W, 6TH P.M.
WELD COUNTY, COLORADO

PREPARED FOR:



BOST FARM 5-7 PAD MULTI-WELL PLAN

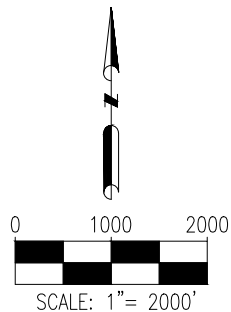


NOTES:

1. THIS FIELD SURVEY CONFORMS TO THE MINIMUM STANDARDS SET BY THE C.O.G.C.C., RULE NO. 215
2. ALL DISTANCES AND BEARINGS SHOWN HEREON ARE GROUND VALUES AS GPS MEASURED IN THE FIELD, WITH TIES TO WELLS MEASURED PERPENDICULAR TO SECTION LINES. THIS LOW DISTORTION PROJECTION (LDP) IS BASED ON THE NORTH AMERICAN DATUM OF 1983, U.S. SURVEY FOOT WITH A LATITUDE ORIGIN OF 40.392315°, A CENTRAL MERIDIAN LONGITUDE OF -104.794248°, AND A SCALE FACTOR ON THE CENTRAL MERIDIAN OF 1.000228 (EXACT). THE LDP BASIS OF BEARINGS IS GEODETIC NORTH.
3. FIELD VERIFICATION OF MONUMENTS COMPLETED WITHIN 1 YEAR OF SIGNATURE DATE.

LEGEND

- = EXISTING MONUMENT
- = CALCULATED POSITION
- = PROPOSED WELL
- ◆ = EXISTING WELL
- ⬆ = BOTTOM HOLE
- ▲ = TOP OF PRODUCTION ZONE
- TPZ = TOP OF PRODUCTION ZONE
- BHL = BOTTOM HOLE LOCATION



SHEET 5 OF 10



FIELD DATE:

06-15-17

DRAWING DATE:

08-09-18

BY:

MMP

CHECKED BY:

MJE

WELL NAME:

BOST FARM 5-7 PAD

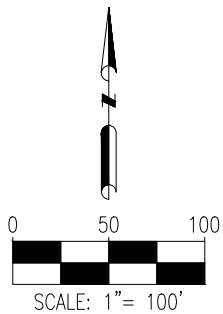
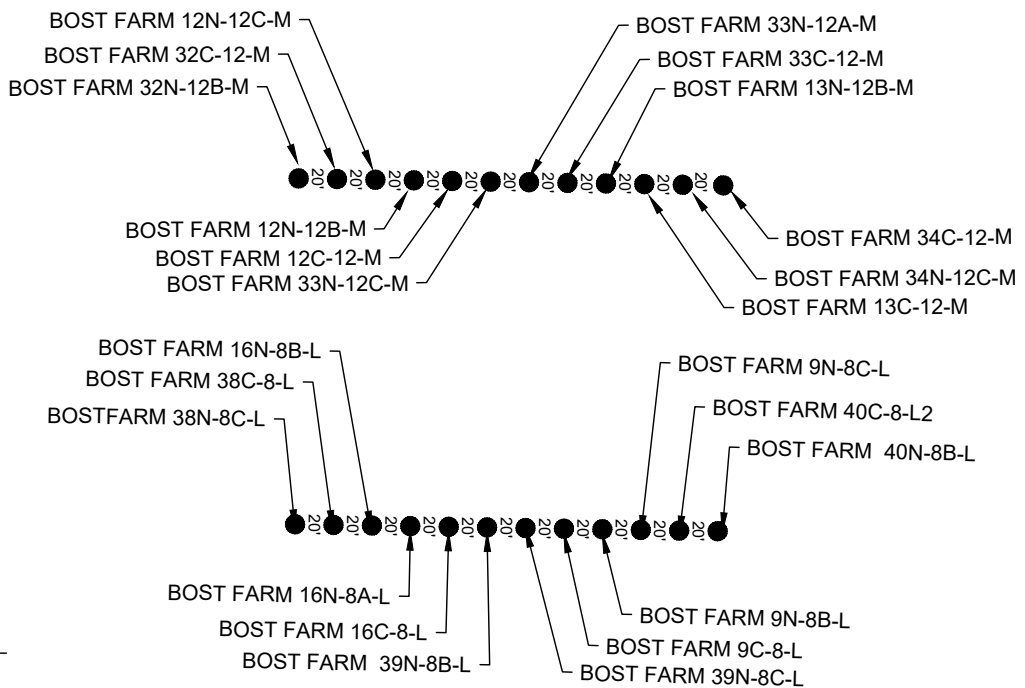
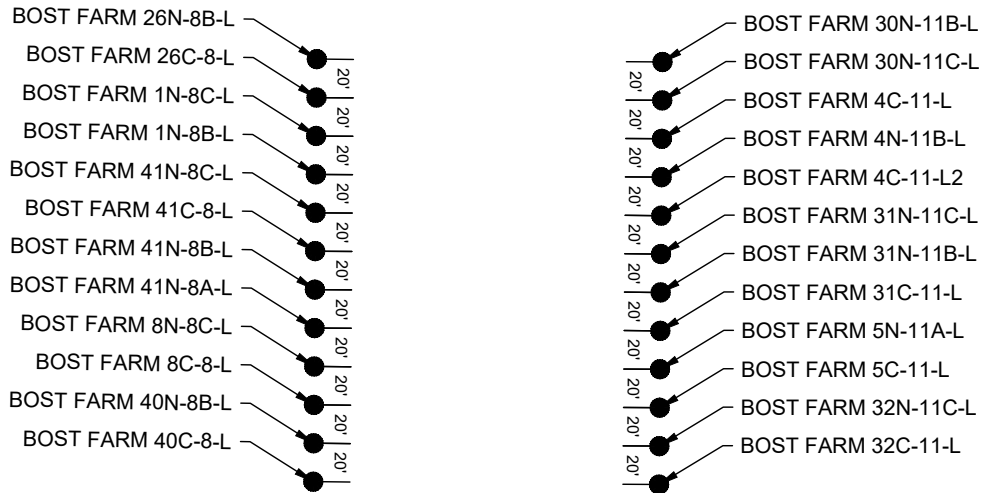
SURFACE LOCATION:

LOT 2 NW 1/4 SEC. 7, T5N, R66W, 6TH P.M.
WELD COUNTY, COLORADO

PREPARED FOR:



BOST FARM 5-7 PAD MULTI-WELL PLAN



LEGEND

● = PROPOSED WELL

SHEET 6 OF 10

BOST FARM 5-7 PAD MULTI-WELL PLAN

BOST FARM 30N-11B-L

SURFACE HOLE:
1295' FNL & 1122' FWL
LAT: 40.417972°
LON: -104.828362°

TOP OF PRODUCTION ZONE:
135' FNL & 150' FEL
LAT: 40.421198°
LON: -104.832950°

BOTTOM HOLE:
91' FNL & 460' FWL
LAT: 40.421044°
LON: -104.868205°

FORMATION:
NIOBRARA

BOST FARM 30N-11C-L

SURFACE HOLE:
1315' FNL & 1121' FWL
LAT: 40.417517°
LON: -104.828363°

TOP OF PRODUCTION ZONE:
355' FNL & 150' FEL
LAT: 40.420593°
LON: -104.832946°

BOTTOM HOLE:
307' FNL & 460' FWL
LAT: 40.420449°
LON: -104.868204°

FORMATION:
NIOBRARA

BOST FARM 4C-11-L

SURFACE HOLE:
1335' FNL & 1121' FWL
LAT: 40.417862°
LON: -104.828363°

TOP OF PRODUCTION ZONE:
575' FNL & 150' FEL
LAT: 40.419889°
LON: -104.832942°

BOTTOM HOLE:
526' FNL & 460' FWL
LAT: 40.419848°
LON: -104.868204°

FORMATION:
CODELL

BOST FARM 4N-11B-L

SURFACE HOLE:
1355' FNL & 1121' FWL
LAT: 40.417807°
LON: -104.828364°

TOP OF PRODUCTION ZONE:
795' FNL & 150' FEL
LAT: 40.419385°
LON: -104.832938°

BOTTOM HOLE:
747' FNL & 460' FWL
LAT: 40.419244°
LON: -104.868204°

FORMATION:
NIOBRARA

BOST FARM 4C-11-L2

SURFACE HOLE:
1375' FNL & 1121' FWL
LAT: 40.417752°
LON: -104.828364°

TOP OF PRODUCTION ZONE:
1015' FNL & 150' FEL
LAT: 40.418781°
LON: -104.832934°

BOTTOM HOLE:
967' FNL & 460' FWL
LAT: 40.418640°
LON: -104.868203°

FORMATION:
CODELL

BOST FARM 31N-11C-L

SURFACE HOLE:
1395' FNL & 1120' FWL
LAT: 40.417698°
LON: -104.828365°

TOP OF PRODUCTION ZONE:
1235' FNL & 150' FEL
LAT: 40.418177°
LON: -104.832930°

BOTTOM HOLE:
1187' FNL & 460' FWL
LAT: 40.418036°
LON: -104.868203°

FORMATION:
NIOBRARA

BOST FARM 31N-11B-L

SURFACE HOLE:
1415' FNL & 1120' FWL
LAT: 40.417643°
LON: -104.828366°

TOP OF PRODUCTION ZONE:
1455' FNL & 150' FEL
LAT: 40.417573°
LON: -104.832926°

BOTTOM HOLE:
1407' FNL & 460' FWL
LAT: 40.417432°
LON: -104.868203°

FORMATION:
NIOBRARA

BOST FARM 31C-11-L

SURFACE HOLE:
1435' FNL & 1120' FWL
LAT: 40.414643°
LON: -104.828073°

TOP OF PRODUCTION ZONE:
1675' FNL & 150' FEL
LAT: 40.416969°
LON: -104.832922°

BOTTOM HOLE:
1627' FNL & 460' FWL
LAT: 40.416828°
LON: -104.868203°

FORMATION:
CODELL

BOST FARM 5N-11A-L

SURFACE HOLE:
1455' FNL & 1120' FWL
LAT: 40.417533°
LON: -104.828367°

TOP OF PRODUCTION ZONE:
1895' FNL & 150' FEL
LAT: 40.416365°
LON: -104.832918°

BOTTOM HOLE:
1847' FNL & 460' FWL
LAT: 40.416224°
LON: -104.868202°

FORMATION:
NIOBRARA

BOST FARM 5C-11-L

SURFACE HOLE:
1475' FNL & 1119' FWL
LAT: 40.417478°
LON: -104.828367°

TOP OF PRODUCTION ZONE:
2115' FNL & 150' FEL
LAT: 40.415761°
LON: -104.832914°

BOTTOM HOLE:
2067' FNL & 460' FWL
LAT: 40.415620°
LON: -104.868202°

FORMATION:
CODELL

BOST FARM 32N-11C-L

SURFACE HOLE:
1495' FNL & 1119' FWL
LAT: 40.417423°
LON: -104.828368°

TOP OF PRODUCTION ZONE:
2336' FNL & 150' FEL
LAT: 40.415156°
LON: -104.832910°

BOTTOM HOLE:
2288' FNL & 460' FWL
LAT: 40.415014°
LON: -104.868202°

FORMATION:
NIOBRARA

BOST FARM 32C-11-L

SURFACE HOLE:
1515' FNL & 1119' FWL
LAT: 40.417368°
LON: -104.828368°

TOP OF PRODUCTION ZONE:
2556' FNL & 150' FEL
LAT: 40.414552°
LON: -104.832905°

BOTTOM HOLE:
2508' FNL & 460' FWL
LAT: 40.414408°
LON: -104.868201°

FORMATION:
CODELL

SHEET 7 OF 10



FIELD DATE: 06-15-17		WELL NAME: BOST FARM 5-7 PAD	
DRAWING DATE: 08-09-18		SURFACE LOCATION: LOT 2 NW 1/4 SEC. 7, T5N, R66W, 6TH P.M.	
BY: MMP	CHECKED BY: MJE	WELD COUNTY, COLORADO	



BOST FARM 5-7 PAD MULTI-WELL PLAN

BOST FARM 26N-8B-L

SURFACE HOLE:
1297' FNL & 942' FWL
LAT: 40.417976°
LON: -104.829009°

TOP OF PRODUCTION ZONE:
117' FNL & 150' FWL
LAT: 40.421255°
LON: -104.831873°

BOTTOM HOLE:
77' FNL & 460' FEL
LAT: 40.421205°
LON: -104.796110°

FORMATION:
NIOBRARA

BOST FARM 26C-8-L

SURFACE HOLE:
1317' FNL & 941' FWL
LAT: 40.417921°
LON: -104.829009°

TOP OF PRODUCTION ZONE:
342' FNL & 150' FWL
LAT: 40.420638°
LON: -104.831869°

BOTTOM HOLE:
299' FNL & 460' FEL
LAT: 40.420594°
LON: -104.796104°

FORMATION:
CODELL

BOST FARM 1N-8C-L

SURFACE HOLE:
1337' FNL & 941' FWL
LAT: 40.417866°
LON: -104.829010°

TOP OF PRODUCTION ZONE:
562' FNL & 150' FWL
LAT: 40.420033°
LON: -104.831865°

BOTTOM HOLE:
525' FNL & 460' FEL
LAT: 40.419974°
LON: -104.796098°

FORMATION:
NIOBRARA

BOST FARM 1N-8B-L

SURFACE HOLE:
1357' FNL & 941' FWL
LAT: 40.417811°
LON: -104.829010°

TOP OF PRODUCTION ZONE:
787' FNL & 150' FWL
LAT: 40.419416°
LON: -104.831861°

BOTTOM HOLE:
751' FNL & 460' FEL
LAT: 40.419355°
LON: -104.796093°

FORMATION:
NIOBRARA

BOST FARM 41N-8C-L

SURFACE HOLE:
1377' FNL & 941' FWL
LAT: 40.417756°
LON: -104.829011°

TOP OF PRODUCTION ZONE:
1011' FNL & 150' FWL
LAT: 40.418799°
LON: -104.831857°

BOTTOM HOLE:
974' FNL & 460' FEL
LAT: 40.418744°
LON: -104.796087°

FORMATION:
NIOBRARA

BOST FARM 41C-8-L

SURFACE HOLE:
1397' FNL & 940' FWL
LAT: 40.417701°
LON: -104.829011°

TOP OF PRODUCTION ZONE:
1241' FNL & 150' FWL
LAT: 40.418169°
LON: -104.831853°

BOTTOM HOLE:
1199' FNL & 460' FEL
LAT: 40.418124°
LON: -104.796082°

FORMATION:
CODELL

BOST FARM 41N-8B-L

SURFACE HOLE:
1417' FNL & 940' FWL
LAT: 40.417647°
LON: -104.829012°

TOP OF PRODUCTION ZONE:
1466' FNL & 150' FWL
LAT: 40.417552°
LON: -104.831848°

BOTTOM HOLE:
1425' FNL & 460' FEL
LAT: 40.417504°
LON: -104.796076°

FORMATION:
NIOBRARA

BOST FARM 41N-8A-L

SURFACE HOLE:
1437' FNL & 940' FWL
LAT: 40.417592°
LON: -104.829013°

TOP OF PRODUCTION ZONE:
1691' FNL & 150' FWL
LAT: 40.416935°
LON: -104.831844°

BOTTOM HOLE:
1651' FNL & 460' FEL
LAT: 40.416884°
LON: -104.796070°

FORMATION:
NIOBRARA

BOST FARM 8N-8C-L

SURFACE HOLE:
1457' FNL & 940' FWL
LAT: 40.417537°
LON: -104.829013°

TOP OF PRODUCTION ZONE:
1912' FNL & 150' FWL
LAT: 40.416327°
LON: -104.831840°

BOTTOM HOLE:
1874' FNL & 460' FEL
LAT: 40.416273°
LON: -104.796065°

FORMATION:
NIOBRARA

BOST FARM 8C-8-L

SURFACE HOLE:
1477' FNL & 939' FWL
LAT: 40.417482°
LON: -104.829014°

TOP OF PRODUCTION ZONE:
2137' FNL & 150' FWL
LAT: 40.415709°
LON: -104.831836°

BOTTOM HOLE:
2100' FNL & 460' FEL
LAT: 40.415654°
LON: -104.796059°

FORMATION:
CODELL

BOST FARM 40N-8B-L

SURFACE HOLE:
1497' FNL & 939' FWL
LAT: 40.417427°
LON: -104.829014°

TOP OF PRODUCTION ZONE:
2362' FNL & 150' FWL
LAT: 40.415091°
LON: -104.831832°

BOTTOM HOLE:
2326' FNL & 460' FEL
LAT: 40.415034°
LON: -104.796053°

FORMATION:
NIOBRARA

BOST FARM 40C-8-L

SURFACE HOLE:
1517' FNL & 939' FWL
LAT: 40.417372°
LON: -104.829015°

TOP OF PRODUCTION ZONE:
2587' FNL & 150' FWL
LAT: 40.414473°
LON: -104.831828°

BOTTOM HOLE:
2551' FNL & 460' FEL
LAT: 40.414414°
LON: -104.796048°

FORMATION:
CODELL

SHEET 8 OF 10



FIELD DATE: 06-15-17		WELL NAME: BOST FARM 5-7 PAD	
DRAWING DATE: 08-09-18		SURFACE LOCATION: LOT 2 NW 1/4 SEC. 7, T5N, R66W, 6TH P.M. WELD COUNTY, COLORADO	
BY: MMP	CHECKED BY: MJE		



BOST FARM 5-7 PAD MULTI-WELL PLAN

BOST FARM 32N-12B-M

SURFACE HOLE:
2508' FNL & 1056' FWL
LAT: 40.414646°
LON: -104.828575°

TOP OF PRODUCTION ZONE:
2563' FSL & 1162' FWL
LAT: 40.413866°
LON: -104.828191°

BOTTOM HOLE:
2578' FSL & 460' FWL
LAT: 40.413732°
LON: -104.849310°

FORMATION:
NIOBRARA

BOST FARM 32C-12-M

SURFACE HOLE:
2508' FNL & 1076' FWL
LAT: 40.414645°
LON: -104.828503°

TOP OF PRODUCTION ZONE:
2345' FSL & 1164' FWL
LAT: 40.413268°
LON: -104.828181°

BOTTOM HOLE:
2357' FSL & 460' FWL
LAT: 40.413124°
LON: -104.849310°

FORMATION:
CODELL

BOST FARM 12N-12C-M

SURFACE HOLE:
2507' FNL & 1096' FWL
LAT: 40.414645°
LON: -104.828432°

TOP OF PRODUCTION ZONE:
2120' FSL & 1165' FWL
LAT: 40.412650°
LON: -104.828171°

BOTTOM HOLE:
2135' FSL & 460' FWL
LAT: 40.412516°
LON: -104.849311°

FORMATION:
NIOBRARA

BOST FARM 12N-12B-M

SURFACE HOLE:
2507' FNL & 1116' FWL
LAT: 40.414645°
LON: -104.828360°

TOP OF PRODUCTION ZONE:
1902' FSL & 1167' FWL
LAT: 40.412053°
LON: -104.828161°

BOTTOM HOLE:
1917' FSL & 460' FWL
LAT: 40.411919°
LON: -104.849311°

FORMATION:
NIOBRARA

BOST FARM 12C-12-M

SURFACE HOLE:
2507' FNL & 1136' FWL
LAT: 40.414644°
LON: -104.828288°

TOP OF PRODUCTION ZONE:
1684' FSL & 1168' FWL
LAT: 40.411455°
LON: -104.828151°

BOTTOM HOLE:
1696' FSL & 460' FWL
LAT: 40.411312°
LON: -104.849311°

FORMATION:
CODELL

BOST FARM 33N-12C-M

SURFACE HOLE:
2507' FNL & 1156' FWL
LAT: 40.414643°
LON: -104.828216°

TOP OF PRODUCTION ZONE:
1463' FSL & 1170' FWL
LAT: 40.410848°
LON: -104.828141°

BOTTOM HOLE:
1475' FSL & 460' FWL
LAT: 40.410704°
LON: -104.849311°

FORMATION:
NIOBRARA

BOST FARM 33N-12A-M

SURFACE HOLE:
2507' FNL & 1176' FWL
LAT: 40.414643°
LON: -104.828144°

TOP OF PRODUCTION ZONE:
1241' FSL & 1172' FWL
LAT: 40.410240°
LON: -104.828132°

BOTTOM HOLE:
1257' FSL & 460' FWL
LAT: 40.410107°
LON: -104.849312°

FORMATION:
NIOBRARA

BOST FARM 33C-12-M

SURFACE HOLE:
2506' FNL & 1196' FWL
LAT: 40.414643°
LON: -104.828073°

TOP OF PRODUCTION ZONE:
1022' FSL & 1173' FWL
LAT: 40.409638°
LON: -104.828122°

BOTTOM HOLE:
1036' FSL & 460' FWL
LAT: 40.409499°
LON: -104.849312°

FORMATION:
CODELL

BOST FARM 13N-12B-M

SURFACE HOLE:
2506' FNL & 1216' FWL
LAT: 40.414642°
LON: -104.828001°

TOP OF PRODUCTION ZONE:
802' FSL & 1175' FWL
LAT: 40.409034°
LON: -104.828112°

BOTTOM HOLE:
811' FSL & 460' FWL
LAT: 40.408882°
LON: -104.849312°

FORMATION:
NIOBRARA

BOST FARM 13C-12-M

SURFACE HOLE:
2506' FNL & 1236' FWL
LAT: 40.414642°
LON: -104.827929°

TOP OF PRODUCTION ZONE:
582' FSL & 1176' FWL
LAT: 40.408430°
LON: -104.828102°

BOTTOM HOLE:
597' FSL & 460' FWL
LAT: 40.408294°
LON: -104.849312°

FORMATION:
CODELL

BOST FARM 34N-12C-M

SURFACE HOLE:
2506' FNL & 1256' FWL
LAT: 40.414642°
LON: -104.827857°

TOP OF PRODUCTION ZONE:
362' FSL & 1178' FWL
LAT: 40.407826°
LON: -104.828092°

BOTTOM HOLE:
376' FSL & 460' FWL
LAT: 40.407688°
LON: -104.849313°

FORMATION:
NIOBRARA

BOST FARM 34C-12-M

SURFACE HOLE:
2506' FNL & 1276' FWL
LAT: 40.414641°
LON: -104.827785°

TOP OF PRODUCTION ZONE:
142' FSL & 1180' FWL
LAT: 40.407222°
LON: -104.828082°

BOTTOM HOLE:
156' FSL & 460' FWL
LAT: 40.407084°
LON: -104.849313°

FORMATION:
CODELL

SHEET 9 OF 10

BOST FARM 5-7 PAD MULTI-WELL PLAN

BOST FARM 38N-8C-L

SURFACE HOLE:
2666' FSL & 1054' FWL
LAT: 40.414152°
LON: -104.828580°

TOP OF PRODUCTION ZONE:
110' FSL & 1480' FWL
LAT: 40.407129°
LON: -104.827004°

BOTTOM HOLE:
101' FSL & 460' FEL
LAT: 40.407145°
LON: -104.795980°

FORMATION:
NIOBRARA

BOST FARM 38C-8-L

SURFACE HOLE:
2666' FSL & 1074' FWL
LAT: 40.414151°
LON: -104.828508°

TOP OF PRODUCTION ZONE:
331' FSL & 1478' FWL
LAT: 40.407734°
LON: -104.827014°

BOTTOM HOLE:
326' FSL & 460' FEL
LAT: 40.407762°
LON: -104.795986°

FORMATION:
CODELL

BOST FARM 16N-8B-L

SURFACE HOLE:
2666' FSL & 1094' FWL
LAT: 40.414151°
LON: -104.828437°

TOP OF PRODUCTION ZONE:
555' FSL & 1477' FWL
LAT: 40.408351°
LON: -104.827024°

BOTTOM HOLE:
551' FSL & 460' FEL
LAT: 40.408380°
LON: -104.795991°

FORMATION:
NIOBRARA

BOST FARM 16N-8A-L

SURFACE HOLE:
2666' FSL & 1114' FWL
LAT: 40.414150°
LON: -104.828365°

TOP OF PRODUCTION ZONE:
776' FSL & 1475' FWL
LAT: 40.408956°
LON: -104.827034°

BOTTOM HOLE:
777' FSL & 460' FEL
LAT: 40.408998°
LON: -104.795997°

FORMATION:
NIOBRARA

BOST FARM 16C-8-L

SURFACE HOLE:
2666' FSL & 1134' FWL
LAT: 40.414150°
LON: -104.828293°

TOP OF PRODUCTION ZONE:
1005' FSL & 1473' FWL
LAT: 40.409585°
LON: -104.827044°

BOTTOM HOLE:
1002' FSL & 460' FEL
LAT: 40.409616°
LON: -104.796003°

FORMATION:
CODELL

BOST FARM 39N-8B-L

SURFACE HOLE:
2666' FSL & 1154' FWL
LAT: 40.414150°
LON: -104.828221

TOP OF PRODUCTION ZONE:
1230' FSL & 1472' FWL
LAT: 40.410203°
LON: -104.827054°

BOTTOM HOLE:
1227' FSL & 460' FEL
LAT: 40.410234°
LON: -104.796009°

FORMATION:
NIOBRARA

BOST FARM 39N-8C-L

SURFACE HOLE:
2666' FSL & 1174' FWL
LAT: 40.414149°
LON: -104.828149°

TOP OF PRODUCTION ZONE:
1455' FSL & 1470' FWL
LAT: 40.410820°
LON: -104.827064°

BOTTOM HOLE:
1452' FSL & 460' FEL
LAT: 40.410852°
LON: -104.796014°

FORMATION:
NIOBRARA

BOST FARM 9C-8-L

SURFACE HOLE:
2666' FSL & 1194' FWL
LAT: 40.414149°
LON: -104.828078°

TOP OF PRODUCTION ZONE:
1680' FSL & 1468' FWL
LAT: 40.411437°
LON: -104.827074°

BOTTOM HOLE:
1677' FSL & 460' FEL
LAT: 40.411469°
LON: -104.796020°

FORMATION:
CODELL

BOST FARM 9N-8B-L

SURFACE HOLE:
2666' FSL & 1214' FWL
LAT: 40.414148°
LON: -104.828006°

TOP OF PRODUCTION ZONE:
1905' FSL & 1467' FWL
LAT: 40.412054°
LON: -104.827084°

BOTTOM HOLE:
1902' FSL & 460' FEL
LAT: 40.412087°
LON: -104.796026°

FORMATION:
NIOBRARA

BOST FARM 9N-8C-L

SURFACE HOLE:
2666' FSL & 1234' FWL
LAT: 40.414148°
LON: -104.827934°

TOP OF PRODUCTION ZONE:
2129' FSL & 1465' FWL
LAT: 40.412671°
LON: -104.827094°

BOTTOM HOLE:
2127' FSL & 460' FEL
LAT: 40.412705°
LON: -104.796032°

FORMATION:
NIOBRARA

BOST FARM 40C-8-L2

SURFACE HOLE:
2666' FSL & 1254' FWL
LAT: 40.414148°
LON: -104.827862°

TOP OF PRODUCTION ZONE:
2354' FSL & 1463' FWL
LAT: 40.413288°
LON: -104.827104°

BOTTOM HOLE:
2353' FSL & 460' FEL
LAT: 40.413323°
LON: -104.796037°

FORMATION:
CODELL

BOST FARM 40N-8B-L2

SURFACE HOLE:
2666' FSL & 1274' FWL
LAT: 40.414147°
LON: -104.827790°

TOP OF PRODUCTION ZONE:
2579' FSL & 1462' FWL
LAT: 40.413906°
LON: -104.827114°

BOTTOM HOLE:
2578' FSL & 460' FEL
LAT: 40.413941°
LON: -104.796043°

FORMATION:
NIOBRARA

SHEET 10 OF 10



FIELD DATE: 06-15-17		WELL NAME: BOST FARM 5-7 PAD	
DRAWING DATE: 08-09-18		SURFACE LOCATION: LOT 2 NW 1/4 SEC. 7, T5N, R66W, 6TH P.M.	
BY: MMP	CHECKED BY: MJE	WELD COUNTY, COLORADO	

