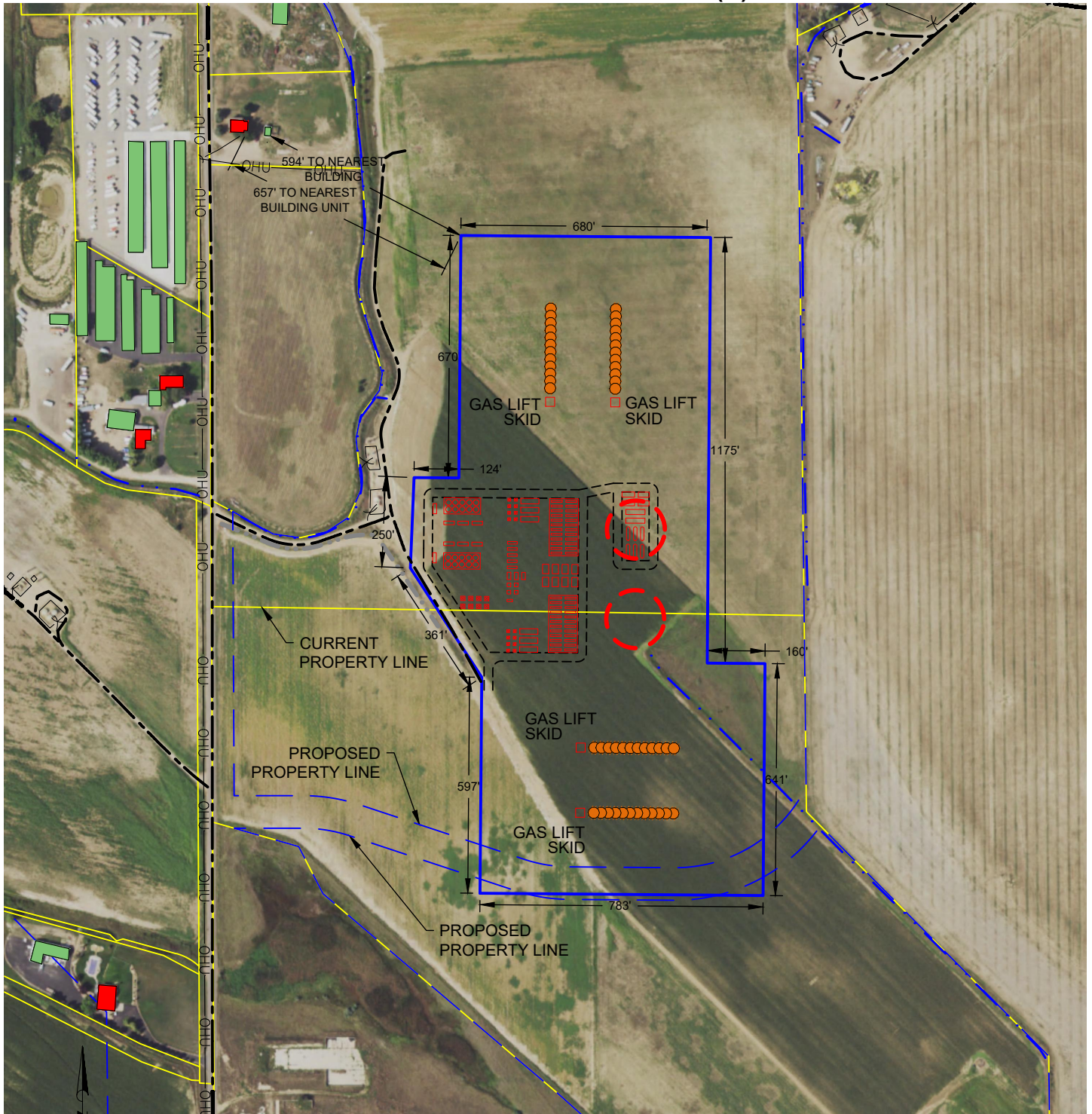


# BOST FARM 5-7 PAD FACILITY LOCATION DRAWING (A)



## LEGEND

- = BUILDING UNIT
- = BUILDING
- = LIMITS OF DISTURBANCE
- = PROPOSED EQUIPMENT
- = PROPOSED MLVT
- = PROPOSED PROPERTY LINE

- = POND
- = FENCE
- = EXISTING ROAD CENTERLINE
- = EDGE OF ACCESS ROAD
- = CONCRETE DITCH
- = PROPERTY LINE

- = DITCH
- = OVERHEAD UTILITY
- = PROPOSED WELL
- = WATER WELL

DISCLAIMER:  
THIS PLOT DOES NOT REPRESENT A MONUMENTED LAND SURVEY AND SHOULD NOT BE RELIED UPON TO DETERMINE BOUNDARY LINES, PROPERTY OWNERSHIP OR OTHER PROPERTY INTERESTS. PARCEL LINES, IF DEPICTED HAVE NOT BEEN FIELD VERIFIED AND MAY BE BASED UPON PUBLICLY AVAILABLE DATA THAT ALSO HAS NOT BEEN INDEPENDENTLY VERIFIED.

DATA SOURCE:  
AERIAL IMAGE: NAIP 2017

PUBLICLY AVAILABLE DATA SOURCES HAVE NOT BEEN INDEPENDENTLY VERIFIED BY ASCENT.



7535 Hilltop Circle  
Denver, CO 80221  
(303) 928-7128  
www.ascentgeomatics.com

FIELD DATE:  
06-15-17

DRAWING DATE:  
08-09-18

BY:  
MMP

CHECKED BY:  
KAD

SITE NAME:

BOST FARM 5-7 PAD

SURFACE LOCATION:

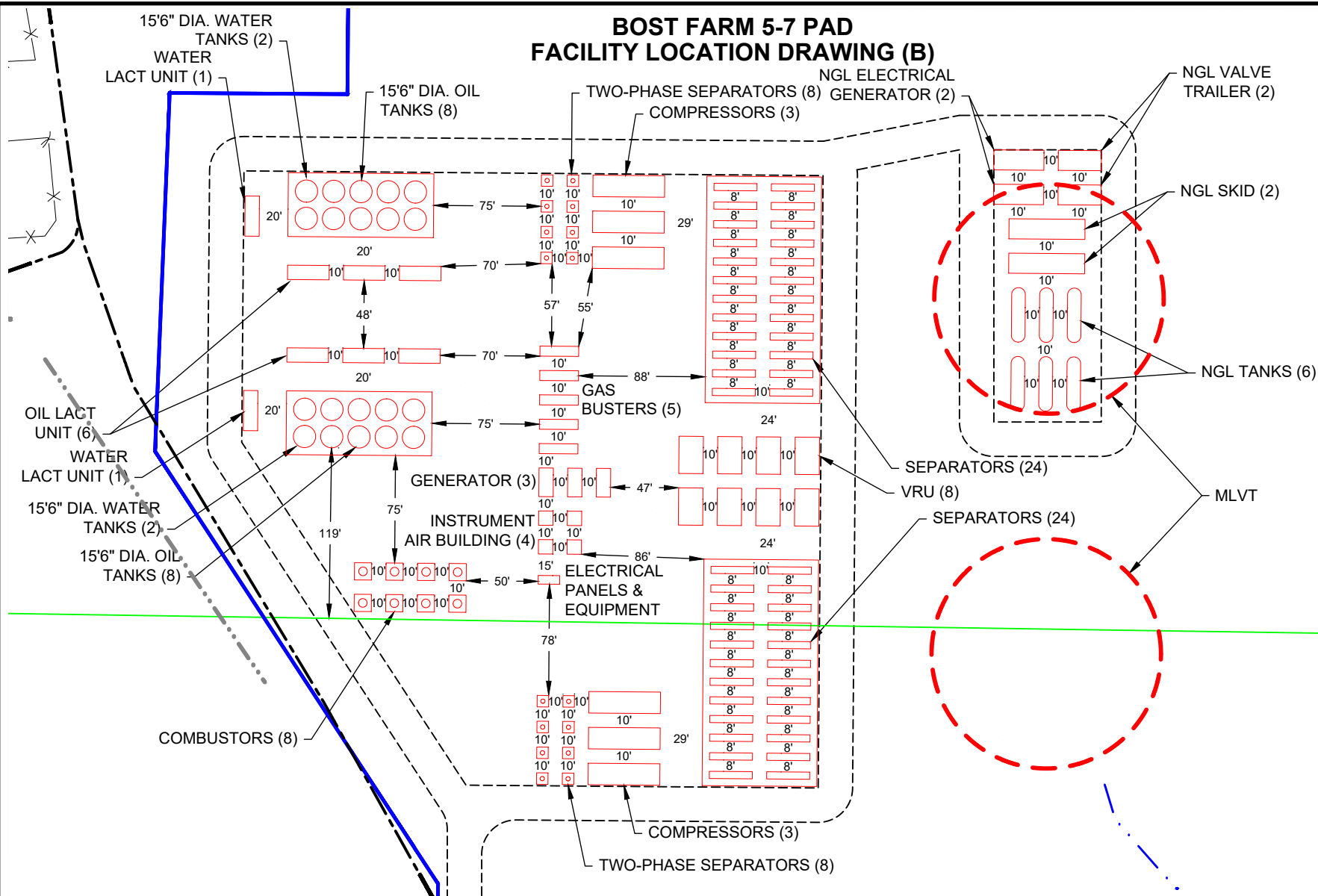
LOT 2 NW 1/4 SEC. 7, T5N, R66W, 6TH P.M.  
WELD COUNTY, COLORADO

PREPARED FOR:



SRC ENERGY

# BOST FARM 5-7 PAD FACILITY LOCATION DRAWING (B)



## LEGEND

- = LIMITS OF DISTURBANCE
- = PROPOSED EQUIPMENT
- = PROPOSED MLVT

- = EDGE OF ACCESS ROAD
- = EXISTING ROAD CENTERLINE
- = CONCRETE DITCH

- ✕ ✕ = FENCE
- = PROPERTY LINE



DATA SOURCE:  
AERIAL IMAGE: NAIP 2017

PUBLICLY AVAILABLE DATA SOURCES HAVE NOT BEEN  
INDEPENDENTLY VERIFIED BY ASCENT.

DISCLAIMER:  
THIS PLOT DOES NOT REPRESENT A MONUMENTED LAND SURVEY AND SHOULD NOT  
BE RELIED UPON TO DETERMINE BOUNDARY LINES, PROPERTY OWNERSHIP OR  
OTHER PROPERTY INTERESTS. PARCEL LINES, IF DEPICTED HAVE NOT BEEN FIELD  
VERIFIED AND MAY BE BASED UPON PUBLICLY AVAILABLE DATA THAT ALSO HAS NOT  
BEEN INDEPENDENTLY VERIFIED.



FIELD DATE:  
06-15-17

DRAWING DATE:  
08-09-18

BY:  
MMP

CHECKED BY:  
KAD

SITE NAME:

BOST FARM 5-7 PAD

SURFACE LOCATION:

LOT 2 NW 1/4 SEC. 7, T5N, R66W, 6TH P.M.  
WELD COUNTY, COLORADO

PREPARED FOR:



# BOST FARM 5-7 PAD FACILITY LOCATION DRAWING (C)

Proposed Facility Equipment	Quantity
VRU	8
Compressor	6
Combustor	8
Gas Buster	5
Oil Tank	16
Water Tank	4
Generator	3
Single Separator	48
Lact Unit	8
Two-Phase Separator	16
Instrument Air Building	4
Gas Lift Skid	4
MLVT	2
NGL Electrical Generator	2
NGL Valve Trailer	2
NGL Skid	2
NGL Tanks	6

Proposed Well	Proposed Well	Proposed Well	Proposed Well
Bost Farm 26N-8B-L	Bost Farm 30N-11B-L	Bost Farm 40N-8B-L2	Bost Farm 32N-12B-M
Bost Farm 26C-8-L	Bost Farm 30N-11C-L	Bost Farm 40C-8-L2	Bost Farm 32C-12-M
Bost Farm 1N-8C-L	Bost Farm 4C-11-L	Bost Farm 9N-8C-L	Bost Farm 12N-12C-M
Bost Farm 1N-8B-L	Bost Farm 4N-11B-L	Bost Farm 9N-8B-L	Bost Farm 12N-12B-M
Bost Farm 41N-8C-L	Bost Farm 4C-11-L2	Bost Farm 9C-8-L	Bost Farm 12C-12-M
Bost Farm 41C-8-L	Bost Farm 31N-11C-L	Bost Farm 39N-8C-L	Bost Farm 33N-12C-M
Bost Farm 41N-8B-L	Bost Farm 31N-11B-L	Bost Farm 39N-8B-L	Bost Farm 33N-12A-M
Bost Farm 41N-8A-L	Bost Farm 31C-11-L	Bost Farm 16C-8-L	Bost Farm 33C-12-M
Bost Farm 8N-8C-L	Bost Farm 5N-11A-L	Bost Farm 16N-8A-L	Bost Farm 13N-12B-M
Bost Farm 8C-8-L	Bost Farm 5C-11-L	Bost Farm 16N-8B-L	Bost Farm 13C-12-M
Bost Farm 40N-8B-L	Bost Farm 32N-11C-L	Bost Farm 38C-8-L	Bost Farm 34N-12C-M
Bost Farm 40C-8-L	Bost Farm 32C-11-L	Bost Farm 38N-8C-L	Bost Farm 34C-12-M

DISCLAIMER:  
THIS PLOT DOES NOT REPRESENT A MONUMENTED LAND SURVEY AND SHOULD NOT BE RELIED  
UPON TO DETERMINE BOUNDARY LINES, PROPERTY OWNERSHIP OR OTHER PROPERTY  
INTERESTS. PARCEL LINES, IF DEPICTED HAVE NOT BEEN FIELD VERIFIED AND MAY BE BASED  
UPON PUBLICLY AVAILABLE DATA THAT ALSO HAS NOT BEEN INDEPENDENTLY VERIFIED.

DATA SOURCE:  
AERIAL IMAGE: NAIP 2017  
PUBLICLY AVAILABLE DATA SOURCES HAVE NOT BEEN  
INDEPENDENTLY VERIFIED BY ASCENT.



7535 Hilltop Circle  
Denver, CO 80221  
(303) 928-7128  
www.ascentgeomatics.com

FIELD DATE:

06-15-17

DRAWING DATE:

08-09-18

BY:

MMP

CHECKED BY:

KAD

SITE NAME:

BOST FARM 5-7 PAD

SURFACE LOCATION:

LOT 2 NW 1/4 SEC. 7, T5N, R66W, 6TH P.M.

WELD COUNTY, COLORADO

PREPARED FOR:



SRC ENERGY