

**LEGEND:**

 **PROPOSED LOCATION**



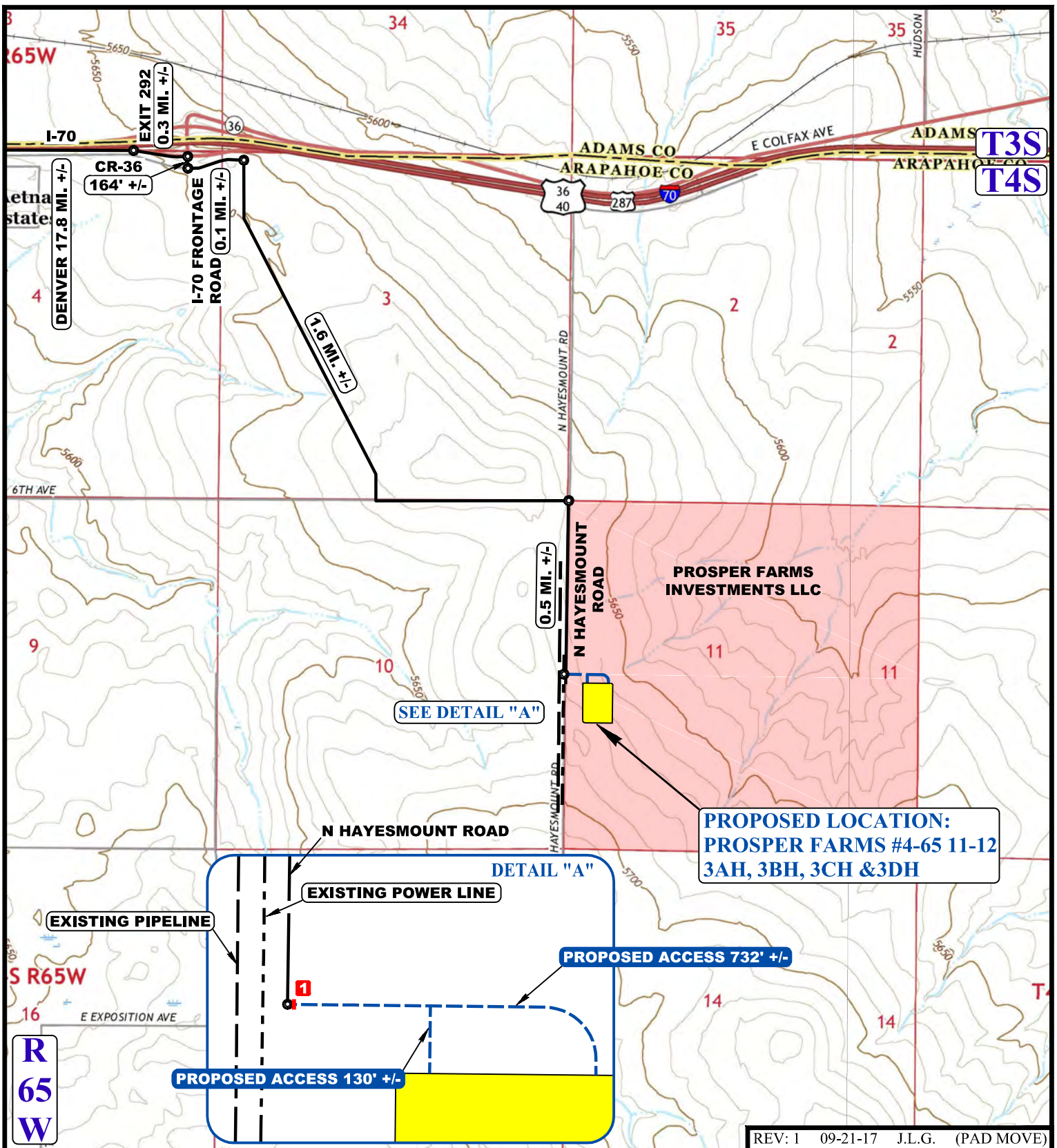
**ConocoPhillips Company**

**PROSPER FARMS #4-65 11-12 3AH, 3BH, 3CH & 3DH  
NW 1/4 SW 1/4, SECTION 11, T4S, R65W, 6th P.M.  
ARAPAHOE COUNTY, COLORADO**



**UELS, LLC**  
Corporate Office \* 85 South 200 East  
Vernal, UT 84078 \* (435) 789-1017

|                        |            |          |               |
|------------------------|------------|----------|---------------|
| SURVEYED BY            | D.N., C.M. | 09-21-17 | SCALE         |
| DRAWN BY               | J.B.       | 07-07-17 | 1 : 100,000   |
| <b>ACCESS ROAD MAP</b> |            |          | <b>TOPO A</b> |



REV: 1 09-21-17 J.L.G. (PAD MOVE)

NOTE: PARCEL DATA SHOWN HAS BEEN OBTAINED FROM VARIOUS SOURCES AND SHOULD BE USED FOR MAPPING, GRAPHIC AND PLANNING PURPOSES ONLY. NO WARRANTY IS MADE BY UINTAH ENGINEERING AND LAND SURVEYING (UELS) FOR ACCURACY OF THE PARCEL DATA.

**LEGEND:**

- EXISTING ROAD
- PROPOSED ROAD
- EXISTING POWER LINE
- EXISTING PIPELINE

INSTALL 18" CULVERT



**ConocoPhillips Company**

**PROSPER FARMS #4-65 11-12 3AH, 3BH, 3CH & 3DH**  
 NW 1/4 SW 1/4, SECTION 11, T4S, R65W, 6th P.M.  
 ARAPAHOE COUNTY, COLORADO

|             |            |          |            |
|-------------|------------|----------|------------|
| SURVEYED BY | D.N., C.M. | 09-21-17 | SCALE      |
| DRAWN BY    | J.B.       | 07-07-17 | 1 : 24,000 |

**ACCESS ROAD MAP**

**TOPO B**



**UELS, LLC**  
 Corporate Office \* 85 South 200 East  
 Vernal, UT 84078 \* (435) 789-1017