

LEGEND:

 PROPOSED LOCATION



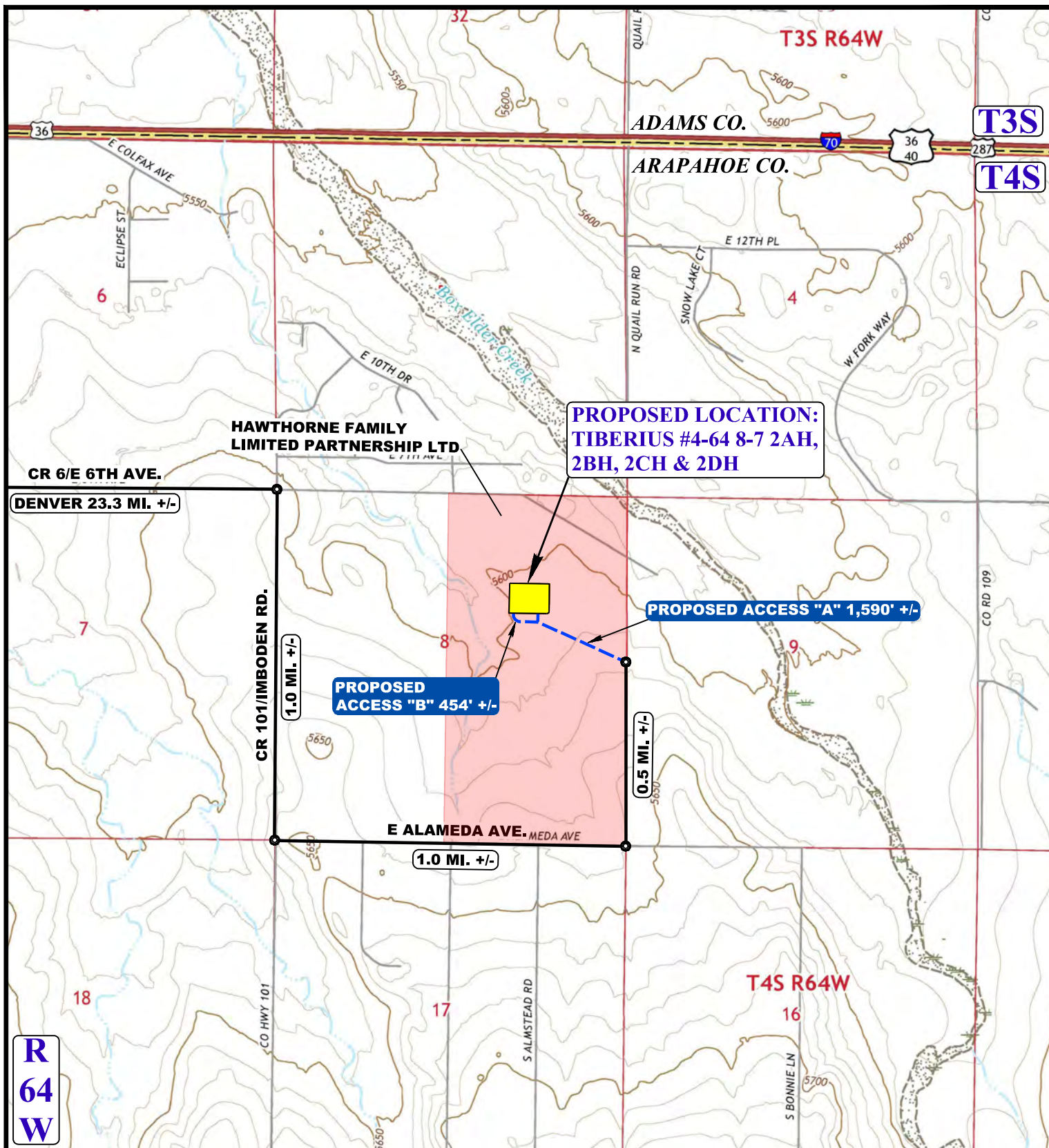
UELS, LLC
 Corporate Office * 85 South 200 East
 Vernal, UT 84078 * (435) 789-1017



ConocoPhillips Company

TIBERIUS #4-64 8-7 2AH, 2BH, 2CH & 2DH
 SW 1/4 NE 1/4, SECTION 8, T4S, R64W, 6th P.M.
 ARAPAHOE COUNTY, COLORADO

SURVEYED BY	J.F., G.W.	07-20-17	SCALE
DRAWN BY	J.L.G.	7-26-17	1 : 100,000
ACCESS ROAD MAP			TOPO A



NOTE: PARCEL DATA SHOWN HAS BEEN OBTAINED FROM VARIOUS SOURCES AND SHOULD BE USED FOR MAPPING, GRAPHIC AND PLANNING PURPOSES ONLY. NO WARRANTY IS MADE BY UINTAH ENGINEERING AND LAND SURVEYING (UELS) FOR ACCURACY OF THE PARCEL DATA.

LEGEND:

— EXISTING ROAD
 - - - PROPOSED ROAD

1 INSTALL 18" CULVERT



ConocoPhillips Company

TIBERIUS #4-64 8-7 2AH, 2BH, 2CH & 2DH
 SW 1/4 NE 1/4, SECTION 8, T4S, R64W, 6th P.M.
 ARAPAHOE COUNTY, COLORADO

SURVEYED BY	J.F., G.W.	07-20-17	SCALE
DRAWN BY	J.L.G.	7-26-17	1 : 24,000
ACCESS ROAD MAP			TOPO B



UELS, LLC
 Corporate Office * 85 South 200 East
 Vernal, UT 84078 * (435) 789-1017